



Studio 55 Architects, LLP
10700 Highway 55, suite 317
Plymouth, MN 55441
763.544.8370
studio55architects.com

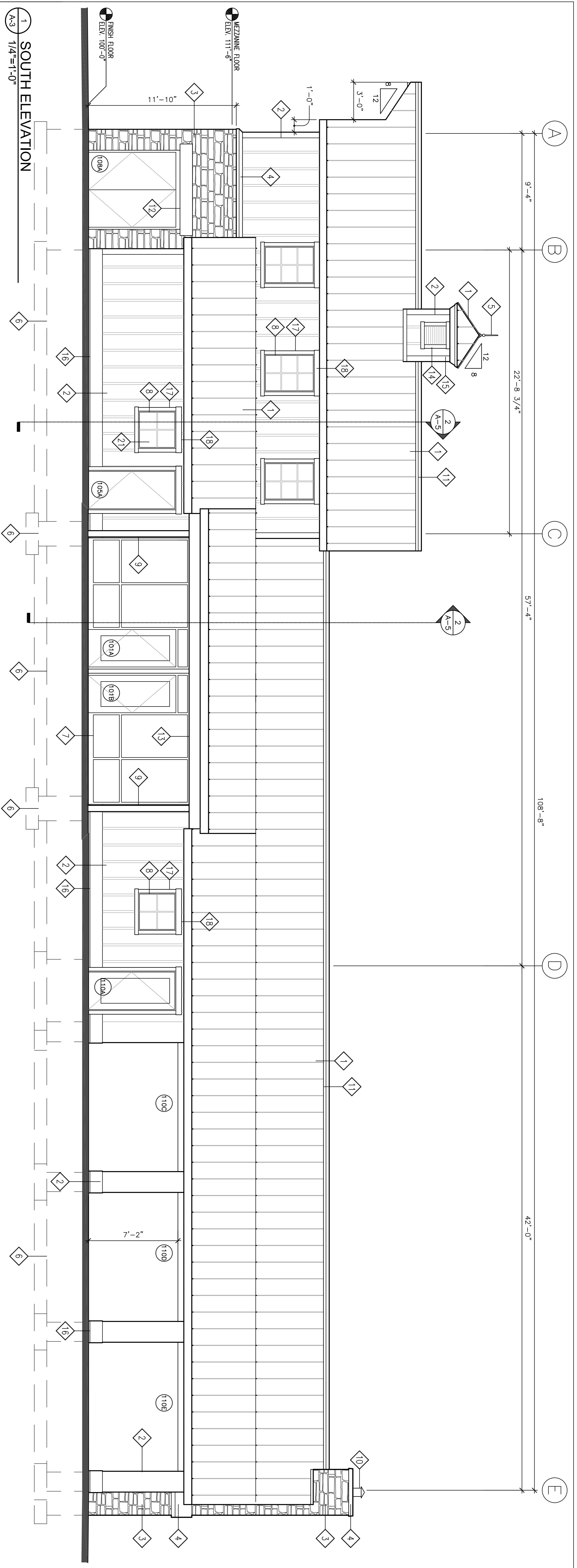
ELMCREST PARK COMMUNITY BUILDING

RAMSEY, MINNESOTA

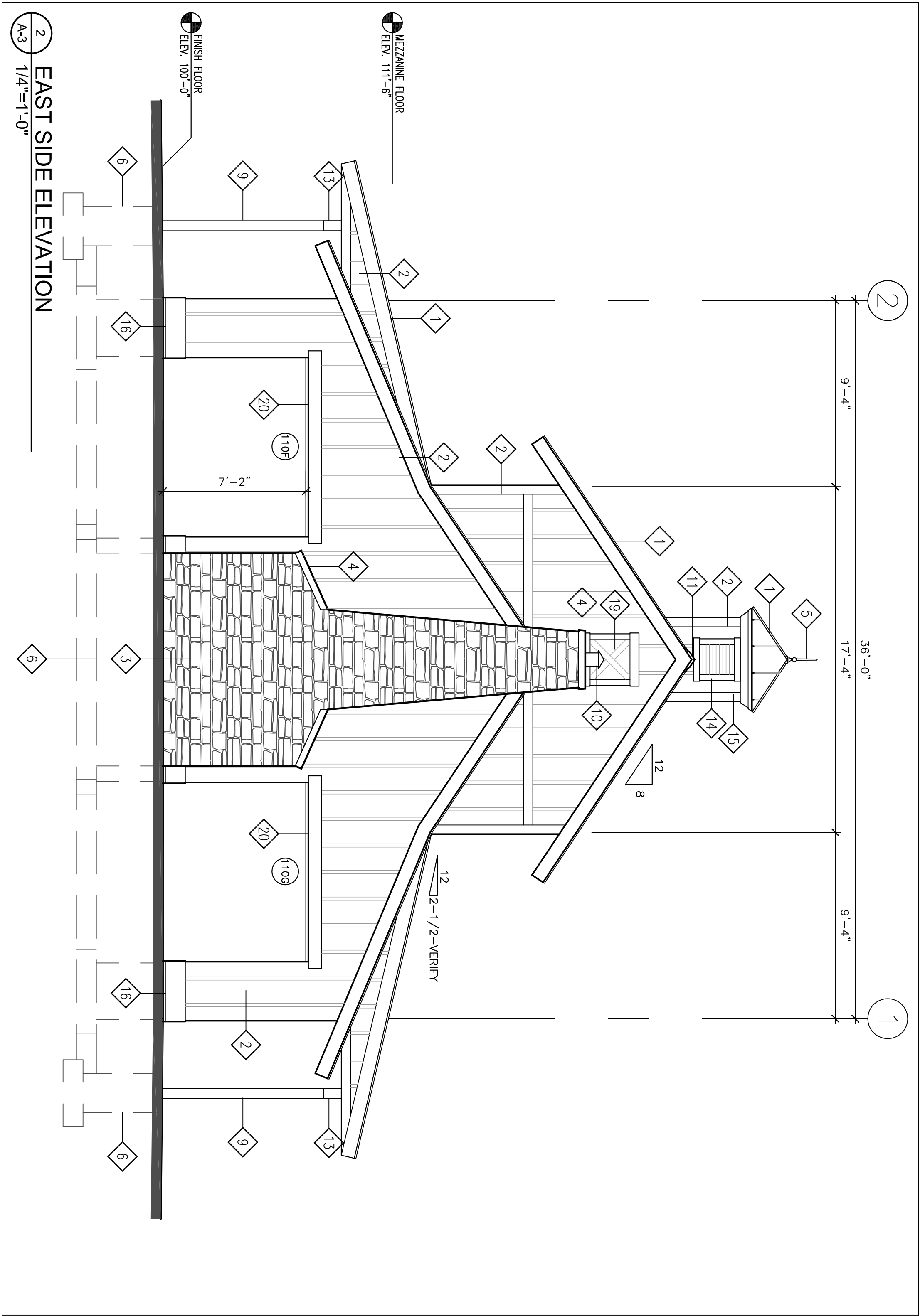
No. Date Revision

I hereby certify that this plan, specification or report was prepared by me or under my direct supervision, and that I am a duly Licensed Architect under the laws of the State of Minnesota.
Printed Name: Bruce P. Bissonette
Signature: _____
Date: 10/25/19 License #: 29592

Project: 13-0110-01
Date: 10/25/13
Drawn by: B.J.R.
Checked by: B.P.B.
Drawing Number: A-3



1 SOUTH ELEVATION
A-3 1/4"=1'-0"

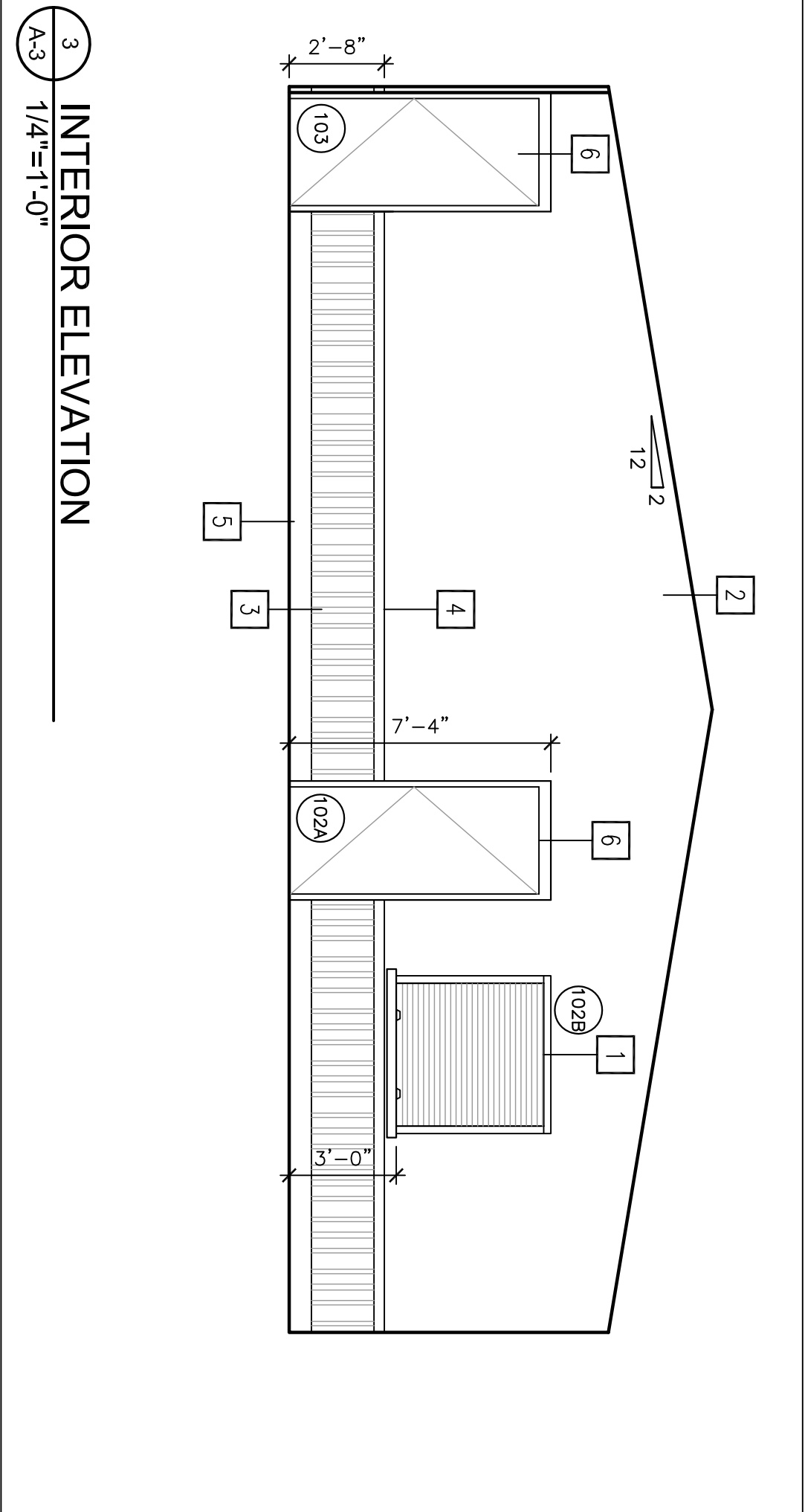


2 EAST SIDE ELEVATION
A-3 1/4"=1'-0"

- ### ELEVATION NOTES
- VERIFY WITH OWNER FOR REQUIRED WALL FINISHING/LOOKING
 - EXTERIOR OF H.M. DOORS & FRAMES SHALL BE PAINTED TO MATCH COLOR OF ADJACENT MATERIAL
 - ALL WORK MUST BE PERFORMED TO INDUSTRY STANDARDS
 - THE CONTRACTOR SHALL VERIFY ALL CONDITIONS AND DIMENSIONS IN WRITING OF ANY DEVIATION FROM THE CONTRACT DOCUMENTS NECESSARY BY FIELD CONDITIONS OR ITEMS NOT COVERED
 - ALL WORK SHALL BE IN COMPLIANCE WITH FEDERAL, STATE AND LOCAL CODES
 - VERIFY GRADE W/ CIVIL DRAWINGS - CONT. THRU-WALL FLASHING TO REMAIN ABOVE GRADE AT ALL TIMES - TYP.

ELEVATION KEYED NOTES

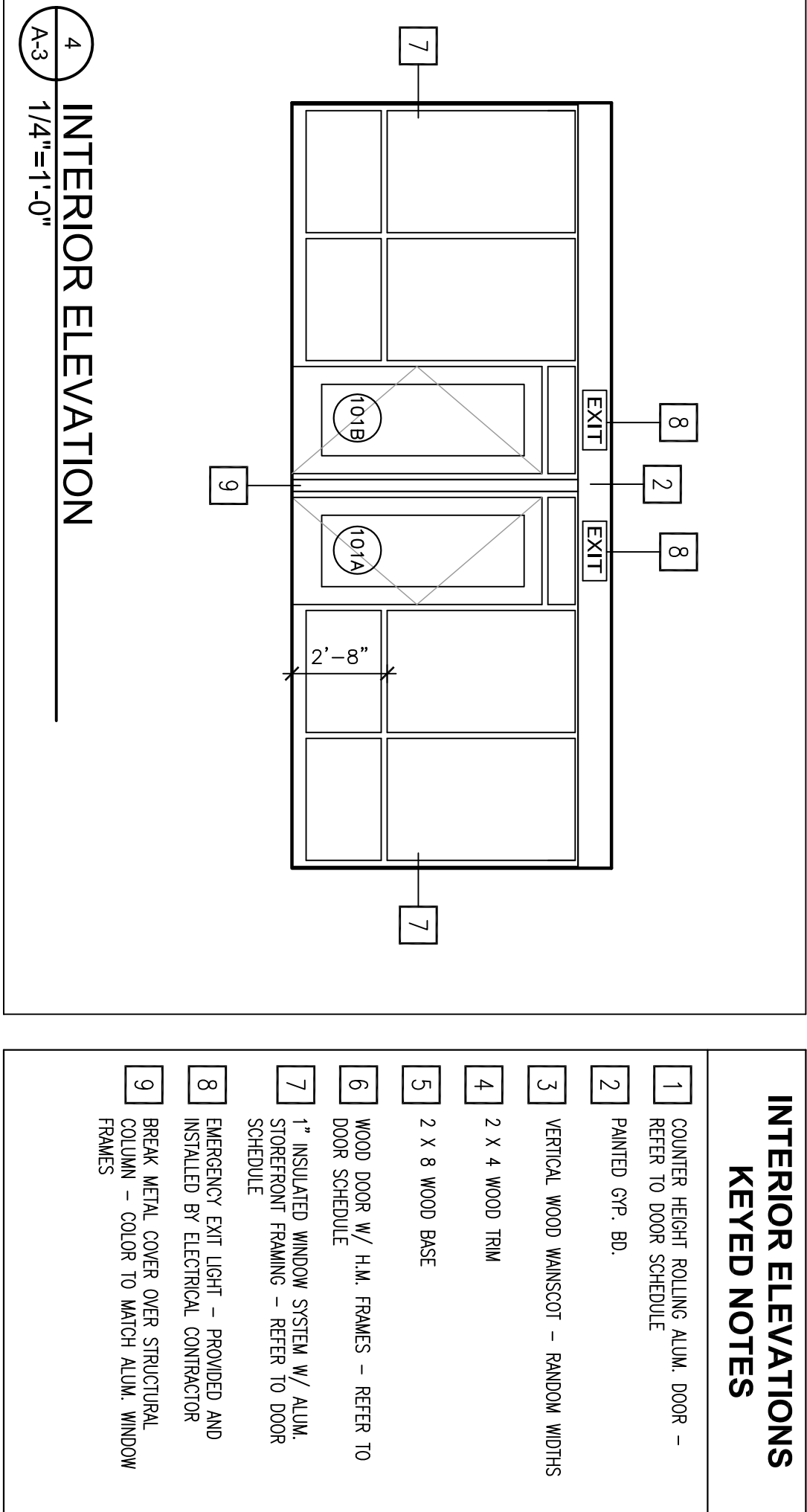
- 1 24 GAUGE PREPRESSED METAL ROOF SYSTEM - SMALL BATTENS @ 16" O.C.
- 2 FIBER CEMENT VERTICAL SING, TRIM, & BATTENS
- 3 MANUFACTURED STONE VENEER
- 4 STONE CAP - BY STONE VENEER MANUFACTURER
- 5 DECORATIVE FINIAL ON TOP OF COUPOLA
- 6 DASHED LINE INDICATES CONCRETE FOOTING AND FOUNDATION - REFER TO STRUCTURAL DRAWINGS
- 7 ALUM. STOREFRONT SYSTEM WITH 1" INSULATED GLAZING
- 8 WOOD WINDOW SYSTEM W/ 1" INSULATED GLAZING
- 9 STEEL COLUMN - PAINTED
- 10 FLUE W/ METAL SCREEN/ CAP
- 11 CONTINUOUS ROOF VENT - TYPICAL
- 12 MANUFACTURED STONE LINTEL OVER DOOR
- 13 BEAM TRIMMED OUT W/ FIBER CEMENT TRIM
- 14 LOWER W/ INSECT SCREEN
- 15 4'-0" x 4'-0" MECHANICAL COUPOLA
- 16 12" FIBER CEMENT TRIM BOARD - TYPICAL
- 17 4" FIBER CEMENT TRIM BOARD - TYPICAL
- 18 6" FIBER CEMENT TRIM BOARD - TYPICAL
- 19 FRAX OPENING TRIM AS SHOWN - TYPICAL
- 20 8" FIBER CEMENT TRIM BOARD - TYPICAL
- 21 FROSTED GLASS



3 INTERIOR ELEVATION
A-3 1/4"=1'-0"

INTERIOR ELEVATIONS KEYED NOTES

- 1 COUNTER HEIGHT ROLLING ALUM. DOOR - REFER TO DOOR SCHEDULE
- 2 PAINTED O.P. BR.
- 3 VERTICAL WOOD WAINSCOT - RANDOM WIDTHS
- 4 2 x 4 WOOD TRIM
- 5 2 x 8 WOOD BASE
- 6 WOOD DOOR W/ H.M. FRAMES - REFER TO DOOR SCHEDULE
- 7 1" INSULATED WINDOW SYSTEM W/ ALUM. STOREFRONT FRAMING - REFER TO DOOR SCHEDULE
- 8 EMERGENCY EXIT LIGHT - FRANGED AND INSTALLED BY ELECTRICAL CONTRACTOR
- 9 BREAK METAL COVER OVER STRUCTURAL COLUMN - COLOR TO MATCH ALUM. WINDOW FRAMES



4 INTERIOR ELEVATION
A-3 1/4"=1'-0"