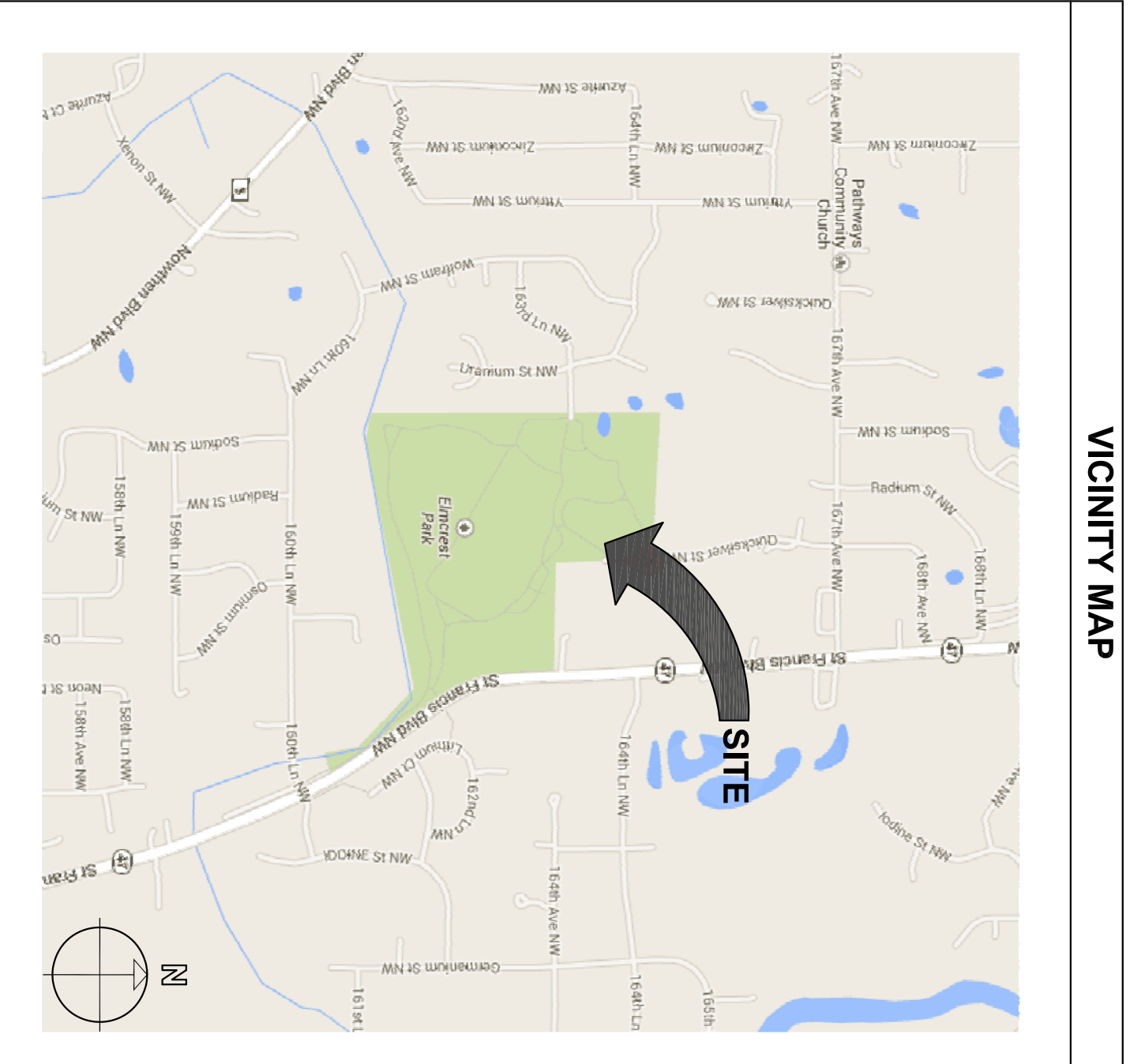


**SITE PLAN NOTES**

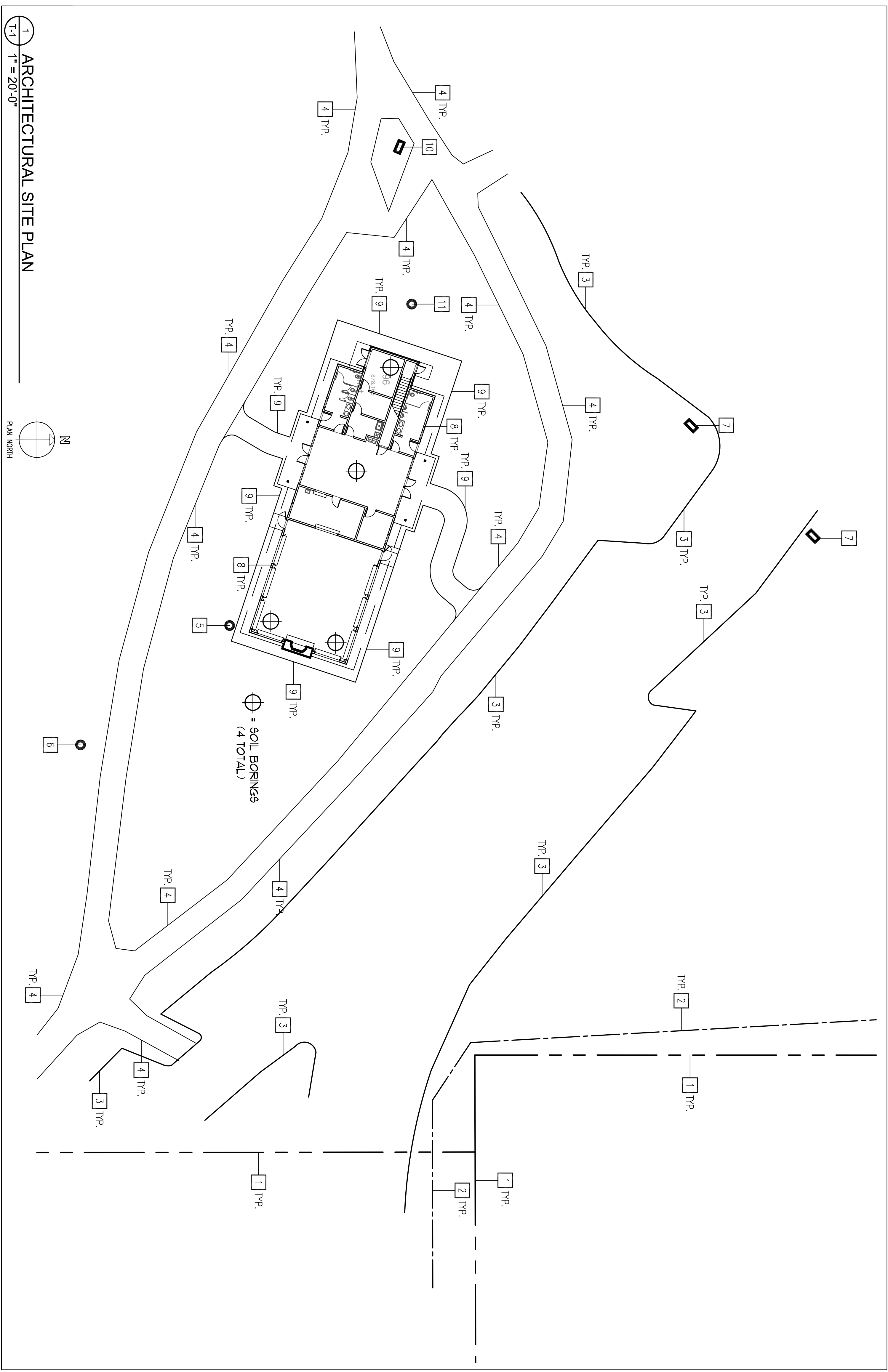
- REFER TO CIVIL AND LANDSCAPE PLANS FOR ADDITIONAL INFORMATION
- VERIFY ALL EXISTING CONDITIONS PRIOR TO CONSTRUCTION
- THE CONTRACTOR SHALL VERIFY ALL CONDITIONS AND DIMENSIONS WITHIN THE CONTRACT LIMITS AND NOTIFY THE ARCHITECT IMMEDIATELY IN WRITING OF ANY DEVIATION FROM THE CONTRACT DOCUMENTS NECESSARY BY FIELD CONDITIONS OR ITEMS NOT COVERED

- SITE PLAN KEYED NOTES**
- EXISTING PROPERTY LINE - REFER TO CIVIL DRAWINGS
  - EXISTING WETLANDS - REFER TO CIVIL DRAWINGS
  - LINE OF EXISTING TOP OF CURB
  - LINE OF EXISTING BRIMMUS TRAIL
  - EXISTING PUBLIC GRILL - RELOCATE - VERIFY W/ OWNER
  - EXISTING PUBLIC DRINKING FOUNTAIN
  - EXISTING PARK SIGN - REFER TO CIVIL DRAWINGS AND VERIFY IN FIELD
  - FOOTPRINT OF NEW PARK COMMUNITY BUILDING
  - NEW SIDEWALK AROUND NEW PARK COMMUNITY BUILDING AND TO EXISTING TRAIL
  - EXISTING PARK INFORMATION SIGN - VERIFY IN FIELD
  - EXISTING PUBLIC GRILL



**SHEET INDEX**

T-1	CODE INFORMATION / VICINITY MAP / CONSULTANTS
A-1	FIRST FLOOR & MEZZANINE FLOOR PLANS
A-2	FIRST FLOOR & MEZZANINE REFLECTED CEILING PLANS
A-2.1	ROOF PLAN, DOOR & ROOM SCHEDULES
A-3	EXTERIOR ELEVATIONS
A-4	EXTERIOR FINISHES & DETAILS
A-5	MECHANICAL CODE WITH AMENDMENTS
A-6	WALL SECTIONS & DETAILS
S-1	STRUCTURAL NOTES & TYPICAL DETAILS
S-2	FOUNDATION PLAN & ROOF FRAMING PLAN
S-3	FOUNDATION DETAILS & FRAMING DETAILS
S-4	ROOF TRUSS DETAILS



**CODE INFORMATION**

BUILDING:	2007 MINNESOTA STATE BUILDING CODE BASED ON 2006 INTERNATIONAL BUILDING CODE WITH AMENDMENTS
PLUMBING:	2009 MINNESOTA STATE PLUMBING CODE - CHAPTER 4715
MECHANICAL:	2009 MINNESOTA STATE MECHANICAL CODE BASED ON 2006 INTERNATIONAL MECHANICAL CODE WITH AMENDMENTS
ELECTRICAL:	2011 NATIONAL ELECTRICAL CODE
FIRE:	MINNESOTA STATE FIRE CODE
ENERGY:	MINNESOTA STATE ENERGY CODE
ACCESSIBILITY:	MINNESOTA ACCESSIBILITY CODE

**CODE EVALUATION**

<b>CODE REVIEW</b>	<b>Elmcrest Park, Ramsey, MN</b>
<b>CODE:</b>	2007 MSBFC
<b>OCCUPANCY TYPE:</b> (Non-separated 508.3.2)	Group B & A-3
<b>TYPE OF CONSTRUCTION:</b> (603.2.1.5)	V-B (602)
<b>BUILDING LIMITATIONS:</b> (TABLE 5-B) & (508.3.2.2)	6,000 SF
<b>ALLOWABLE AREA:</b> AREA MODIFICATIONS (SECTION 509) FROM TABLE 5-B UNLESS SHOWN OTHERWISE	NA
<b>ALLOWABLE AREA:</b> ACTUAL AREA	6,000 SF
<b>ALLOWABLE HEIGHT:</b> ACTUAL HEIGHT:	1 Story, with mezzanine (505.2 & 505.4 exception 1)
<b>OCCUPANT LOAD:</b> (TABLE 10-B)	20 OCCUPANTS
<b>Group B</b> Gross Area = 2002 SF / 100 = 20 OCCUPANTS	40 OCCUPANTS
<b>Group A-3</b> Peric Area = 1500 SF / 15 = 100 OCCUPANTS	100 OCCUPANTS
<b>TOTAL OCCUPANT LOAD FACTOR</b>	188 OCCUPANTS
<b>EXIT WIDTH:</b> (TABLE 10-B)	N/A (44" MINIMUM)
<b>MINIMUM CORRIDOR WIDTH:</b> (TABLE 10-B)	44" (MINIMUM)
<b>STAIRS:</b> 0.2 x 5 occupants =	
<b>OTHER COMPONENTS:</b> 0.15 x 188 = 28' / 2 EXITS = 14' EACH	
<b>EXIT WIDTH PROVIDED:</b>	
<b>MINIMUM CORRIDOR WIDTH:</b> 44"	
<b>2 EXITS PROVIDED @ MINIMUM DOOR OPENING OF 32" FOR EACH 98" DOOR</b>	
<b>MAXIMUM TRAVEL DISTANCE:</b>	200'

**CONSULTANTS**

<b>PROJECT</b>	ELMCREST PARK COMMUNITY BUILDING 16803 QUICKSILVER STREET N.W. RAMSEY, MINNESOTA 55303
<b>CLIENT</b>	CITY OF RAMSEY PARKS AND PUBLIC WORKS RAMSEY, MINNESOTA 55303 PHONE: (763) 453-9853 CONTACT: MARK RIVERBLOOD
<b>ARCHITECT</b>	STUDIO 55 ARCHITECTS, LLP 10700 HIGHWAY 55, SUITE 317 PLYMOUTH, MINNESOTA 55441 PHONE: (763) 544-8370 CONTACT: BRUCE BISSONNETT, AIA
<b>STRUCTURAL ENGINEER</b>	EXPLORER ENGINEERING, LLC 6 GOLDEN VALLEY, MINNESOTA 55422 PHONE: (612) 418-9517 FAX: (763) 541-0066 MIKE FOWLER
<b>GENERAL CONTRACTOR</b>	T.B.D.

<b>BEARING WALLS—EXTERIOR:</b>	0
<b>BEARING WALLS—INTERIOR:</b>	0
<b>CONCRETE FOUNDATION:</b>	0
<b>STRUCTURAL FLOOR:</b>	0
<b>PARTITIONS—PERMANENT:</b>	0
<b>SHAFT ENCLOSURES:</b>	0
<b>FLOORS AND FLOOR—CEILINGS:</b>	0
<b>ROOFS AND ROOF—CEILINGS:</b>	0



Studio 55 Architects, LLP  
10700 Highway 55, suite 317  
Plymouth, MN 55441  
763.544.8370  
studio55architects.com

# ELMCREST PARK COMMUNITY BUILDING

## RAMSEY, MINNESOTA

No.	Date	Revision

1 hereby certifies that this plan specification of report was prepared by me or under my direct supervision, and that I am a duly Licensed Architect under the laws of the State of Minnesota.

Printed Name: Bruce P. Bissonette  
Signature: \_\_\_\_\_  
Date: 10/25/13 License #: 29592  
Project: 13-0110-01  
Date: 10/25/13  
Drawn By: B.J.R.  
Checked by: B.P.B.  
Drawing Number: T-1