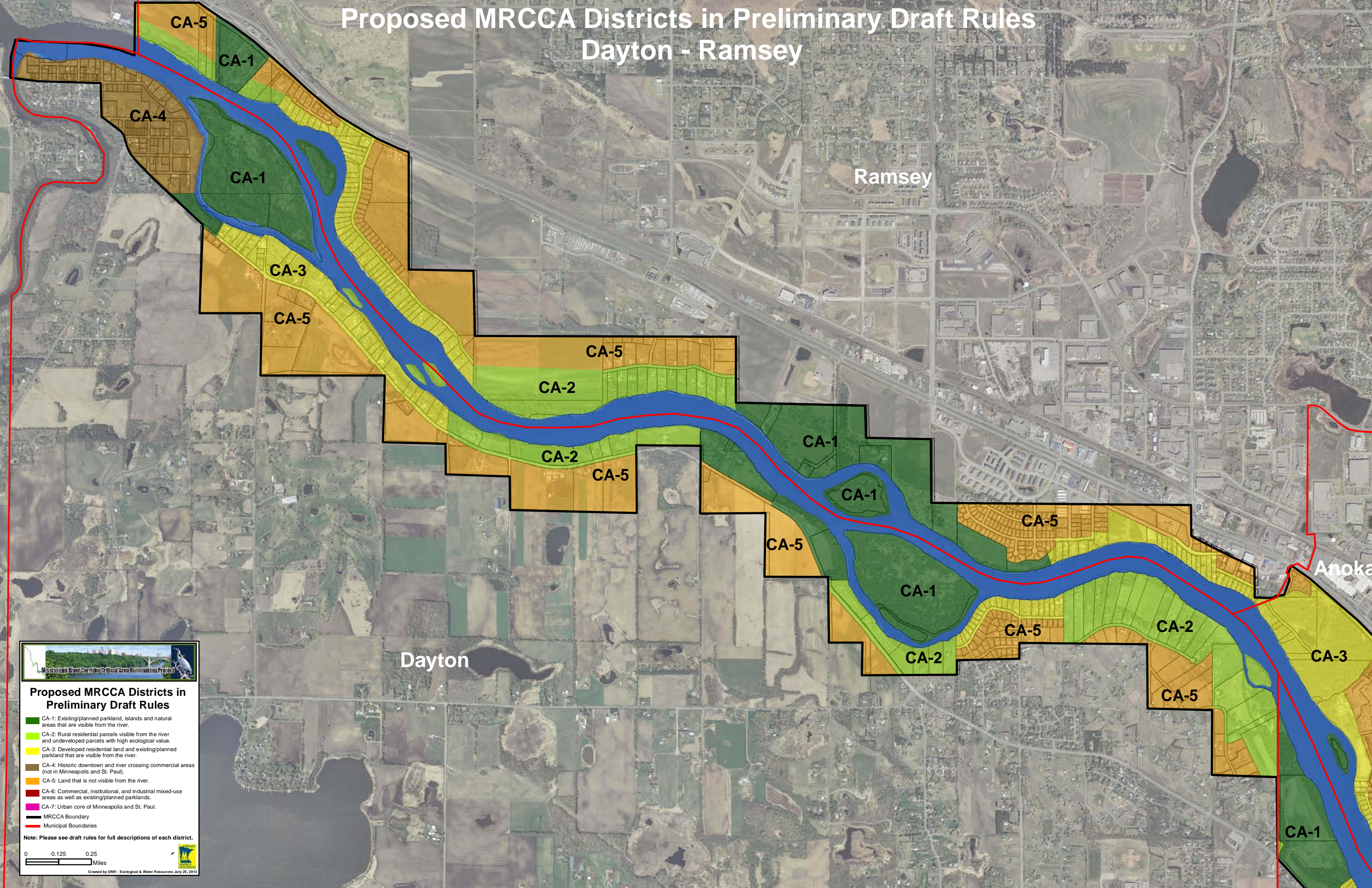


# Proposed MRCCA Districts in Preliminary Draft Rules Dayton - Ramsey



## Proposed MRCCA Districts in Preliminary Draft Rules

- CA-1: Existing/planned parkland, islands and natural areas that are visible from the river.
- CA-2: Rural residential parcels visible from the river and undeveloped parcels with high ecological value.
- CA-3: Developed residential land and existing/planned parkland that are visible from the river.
- CA-4: Historic downtown and river crossing commercial areas (not in Minneapolis and St. Paul).
- CA-5: Land that is not visible from the river.
- CA-6: Commercial, institutional, and industrial mixed-use areas as well as existing/planned parklands.
- CA-7: Urban core of Minneapolis and St. Paul.
- MRCCA Boundary
- Municipal Boundaries

Note: Please see draft rules for full descriptions of each district.

