

City of Ramsey
Agenda
Park and Recreation Commission
Thursday April 11, 2013
6:30 pm
Council Chambers, 7550 Sunwood Drive NW

- 1. Call to Order**
- 2. Citizen Input**
- 3. Approve Agenda**
- 4. Approve Minutes**
 1. Approve March 14, 2013 Park and Recreation Commission Meeting Minutes.
- 5. Commission Business**
 1. Presentation: Second Annual 'Bark for Life' Event at The Draw - April 27th, 2013
 2. 2013 Election of Officers
 3. Recommend Shelter and Restroom for Riverdale Park – 2013 Capital Improvement
 4. Consider Park and Recreation Commission Outdoor Meeting Schedule
- 6. Commission/Staff Input**
 1. Commission/Staff Input
- 7. Adjournment**

Park and Recreation Commission

4. 1.

Meeting Date: 04/11/2013

Submitted For: MaryJo Warner

By: MaryJo Warner, Engineering/Public Works

Title:

Approve March 14, 2013 Park and Recreation Commission Meeting Minutes.

Background:

The Park and Recreation Commission held its regular meeting on March 14, 2013.

Notification:

Observations/Alternatives:

Funding Source:

n/a

Staff Recommendation:

Action:

Motion to approve Park and Recreation Commission meeting minutes dated March 14, 2013.

Attachments

Minutes

Form Review

Inbox
Grant Riemer

Reviewed By
Grant Riemer

Date
04/05/2013 10:18 AM
Started On: 04/03/2013 09:12 AM

Form Started By: MaryJo Warner

Final Approval Date: 04/05/2013

**PARK AND RECREATION COMMISSION
CITY OF RAMSEY
ANOKA COUNTY
STATE OF MINNESOTA**

The Ramsey Park and Recreation Commission conducted a regular meeting on March 14, 2013, at the Ramsey Municipal Center, Ramsey, Minnesota.

Commission Members Present: Chairperson Melody Shryock
 Vice Chair Angela Olsen
 Commissioner Bridgett Barr
 Commissioner Richard Chubb
 Commissioner Andrew Fyten
 Commissioner David Minke

Commission Members Absent: Commissioner Shane Bennett (excused)

Also Present: Parks & Assistant Public Works Superintendent Mark Riverblood

1. CALL TO ORDER

Chairperson Shryock called the Park and Recreation Commission meeting to order at 6:30 p.m.

2. CITIZEN INPUT

None.

3. APPROVE AGENDA

Motion by Commissioner Minke, seconded by Commissioner Chubb to approve the Park and Recreation Commission meeting agenda as presented.

Motion carried. Voting Yes: Chairperson Shryock, Commissioners Minke, Chubb, Barr, Fyten, and Olsen. Voting No: None. Absent: Commissioner Bennett

4. APPROVE MINUTES

4.01: Approve Park and Recreation Commission Meeting Minutes dated February 14, 2013

Motion by Commissioner Fyten, seconded by Commissioner Olsen, to approve the following Park and Recreation Commission Regular Meeting Minutes:

- 1) Park and Recreation Commission Regular Meeting Minutes dated February 14, 2013.

Motion carried. Voting Yes: Chairperson Shryock, Commissioners Fyten, Olsen, Barr, Chubb, and Minke. Voting No: None. Absent: Commissioner Bennett

5. COMMISSION BUSINESS

5.01: Consider Park Land Dedication in Lieu of Cash Dedication for Future Development Adjacent to Lake Itasca

Parks & Assistant Public Works Superintendent Riverblood presented in 1987, a Planned Unit Development was approved known as North Fork. As part of the phases of the platting, and by mutual agreement, two outstanding Park Dedication matters remain from those lands that have already been subdivided. These are that North Fork, Inc. (the Developer) “owes” the City two acres of quality park land, and also “owes a 50-foot wide easement to access the presently undeveloped park tracts east of Lake Itasca and generally north of Outlot E.” The 50-foot access dedication is understood to be over or across Outlot E.

Parks & Assistant Public Works Superintendent Riverblood stated the purpose of the case is to receive the Commission’s general position on exploring park land dedication (over and above what may be owed), in lieu of cash dedication for that undeveloped parcel south of Alpine Drive entitled “Proposed Future Development” on the attached drawing. The land at this time, is expected to permit approximately 16 single-family houses. There are many variables and considerations that also may enter into the question above, however, this case is only intended to address the general position, as a beginning point of discussion between the Developer and the City. It should be noted that the Developer is seeking to answer this question for their planning purposes, and thus the timing of this case. While the Developer may also be interested in receiving Park Dedication credit for the dedication of land involving Outlot C and Outlot D (Moors), Staff is recommending that if they are to be considered, or if ultimately they are a part of some equation, that it be ancillary to receiving Outlot E.

Parks & Assistant Public Works Superintendent Riverblood reviewed no funding considerations are germane at this time, relating to the question of land versus cash Park Dedication in the matter of North Fork, Inc. and the City. Staff’s recommendation would be to remain amenable to North Fork Inc.’s request to explore any number of formulas for meeting present and future Park Dedication owed.

Commissioner Barr asked where the lots would be developed and Parks & Assistant Public Works Superintendent Riverblood stated on the south side of Alpine Drive.

Chairperson Shryock stated in the past there was discussion about a passive park in that area. Riverblood stated the City plans include six community parks. These parks would be easily accessible with access to the trail corridors. A larger community park is an option for this area if the Commission would like to pursue into that.

Chairperson Shryock stated she would be interested in looking at some land for a larger park. Commissioner Fyten agreed staff should research land options.

The consensus of the Park and Recreation Commission was to look at land rather than cash at this time.

Commissioner Barr asked why this was not dealt with prior.

Parks & Assistant Public Works Superintendent Riverblood stated when development was done around the golf course that area was considered recreational and thus the Park Dedication was agreed to be deferred. He indicated this should be reconciled before any further development is done.

Motion by Commissioner Barr, seconded by Commissioner Minke, to recommend to the City Council that Staff work with North Fork, Inc. to present options to solve the present and future Park Dedication owed in the form of land.

Motion carried. Voting Yes: Chairperson Shryock, Commissioners Barr, Minke, Chubb, Fyten, and Olsen. Voting No: None. Absent: Commissioner Bennett

5.02: Recommend Park Monuments for The Draw – 2013 Parks Capital Improvement

Parks & Assistant Public Works Superintendent Riverblood presented on February 5, 2013, the Park and Recreation Commission met with the City Council in a joint work session for the purposes of a preview of the 2013 Parks Capital Improvement Program (CIP). Consensus was generally that most projects should move forward as discussed within the CIP document. Considerable discussion ensued regarding the two park entrance monuments (signs) for The Draw. Discussion may be summarized between two views: One shared by a couple Councilmembers was that park signage need not cost several 10's of thousands of dollars. Another position iterated was that these are indeed way-finding monuments, and are also expected to be in service for many decades – and should be constructed in a manner that befits the \$3 million investment that represents the 7-acre park's construction cost. Parks & Assistant Public Works Superintendent Riverblood noted the entrance monument at Central Park cost approximately \$50,000 in 1997.

Parks & Assistant Public Works Superintendent Riverblood presented the purpose of this case is to further the discussion on the scope and cost of the proposed 2013 monuments for The Draw. Several documents were provided to aid in the discussion:

- The COR sign design guidelines approved by City Council in December 2012.
- Exhibit showing the two monument or sign locations for The Draw
- “Cadillac” monument cost
- “Chevrolet” monument cost
- “Metro Geo” monument cost

Staff requested three estimates from sign maker Archetype from Minneapolis (based upon the approved COR sign guidelines) in three quality/cost “levels.” While the price points are outlined, staff did not have a perspective view to compare these choices to, but has asked the vendor to prepare these to be available for the meeting. Parks & Assistant Public Works

Superintendent Riverblood noted the intent for this element of the Parks CIP would be to have these installed if possible in time for The Draw Summer Concert Series beginning June 20th. The funding source is presently shown as \$20,000 within the 2013 Parks CIP from the Park Improvement Trust Fund.

Parks & Assistant Public Works Superintendent Riverblood stated a Staff recommendation is pending the examination of the perspective views of the three categories of monument choices, together with an investigation of materials and durability and utility. It is important that people are able to locate the park. The three price quotes received were:

“Cadillac”	\$61,590.00
“Chevrolet”	\$29,450.00
“Geo Metro”	\$16,050.00

Parks & Assistant Public Works Superintendent Riverblood reviewed the \$20,000 option and showed a drawing of the sign and indicated the location for the sign. This would be a vertical sign and could be easily seen from the road. This sign would also be lighted. The other sign would be at the intersection of the parkway and is more of a monument type of sign.

Parks & Assistant Public Works Superintendent Riverblood showed another drawing showing a possible plan for an 8-foot high sign. The kiosk was also shown. Parks & Assistant Public Works Superintendent Riverblood suggested rather than having a “Directory” on the kiosk, which can be easily outdated, a sign for The Draw may be more appropriate.

Parks & Assistant Public Works Superintendent Riverblood showed a sign in the \$12,000 range and indicated that some partnership with the charter school for electricity is being researched.

Parks & Assistant Public Works Superintendent Riverblood reviewed the “Chevrolet” option, which would cost around \$20,000. The sign face would be aluminum and the sign base and planter would be fabricated aluminum.

Parks & Assistant Public Works Superintendent Riverblood showed the most expensive option as the stone model, noting stone is more durable than aluminum, which can be easily dented.

Parks & Assistant Public Works Superintendent Riverblood reviewed the kiosk models. The base model would be aluminum. The mid-model is also aluminum with special attention to painting. The most expensive version is constructed of Kasota Stone, internally illuminated caps.

Commissioner Olsen stated it is important that this sign last and looks nice for a number of years. She questioned how long an aluminum sign would last.

Parks & Assistant Public Works Superintendent Riverblood stated aluminum does not corrode and is easily repairable. He stated these will be in service for decades and should look good as there was a considerable investment in the construction of The Draw.

Commissioner Barr asked what amount was in the budget.

Parks & Assistant Public Works Superintendent Riverblood stated \$20,000 is within the budget as a placeholder.

Commissioner Minke asked if Parks & Assistant Public Works Superintendent Riverblood had seen the aluminum models.

Parks & Assistant Public Works Superintendent Riverblood stated before a final decision is made, he would like to research and see some actual signs made in these materials.

Commissioner Minke suggested some references be looked at with similar signs to see how they have worn.

Chairperson Shryock asked if the signs along Ramsey Boulevard would be internally lighted.

Parks & Assistant Public Works Superintendent Riverblood stated that was correct and he will research talking to the charter school.

Chairperson Shryock asked if solar could be used.

Parks & Assistant Public Works Superintendent Riverblood stated that is a good idea and there is a solar lighting grant available from the DNR, however the timing may not be appropriate for these signages. He felt it would be worthwhile researching.

Chairperson Shryock suggested the “stone look” be used either in stone or painted aluminum to look like stone. It would be appropriate to continue the “stone look” already seen on Ramsey Boulevard

The consensus of the Parks & Recreation Commission was to give Staff direction to continue research on the specific monuments and kiosks.

Chairperson Shryock suggested since the sign on Ramsey Boulevard would not be touched, to make that one aluminum and put the stone sign within the COR.

Motion by Commissioner Olsen, seconded by Commissioner Minke, to recommend to the City Council Staff research and develop a level of scope and cost for the two monuments and way finding signs for The Draw based upon discussion and pursue the possibility of solar lighting.

Motion carried. Voting Yes: Chairperson Shryock, Commissioners Minke, Olsen, Barr, Chubb, and Fyten. Voting No: None. Absent: Commissioner Bennett

6. COMMISSION/STAFF INPUT

6.01: Final 2012-2013 Rink Patronage Count

Parks & Assistant Public Works Superintendent Riverblood stated the final 2012-2013 Rink Patronage Count was 5,953 persons counted at the warming houses – 3,085 at Central Park, 2,868 at Ramsey Elementary School. Use at Ramsey Elementary School was slightly over the preceding winter.

6.02: Update On The Status Of Various 2013 Parks Capital Improvements

Parks & Assistant Public Works Superintendent Riverblood reported that updates for the capital improvements will be reviewed at upcoming Commission meetings.

Commissioner Barr asked the status of the Elmcrest Park and Building.

Parks & Assistant Public Works Superintendent Riverblood stated the Northern Lights Soccer Club will be invited to the Council meeting (March 26, 2013) where this will be discussed.

Commissioner Chubb asked for an update on Central Park.

Parks & Assistant Public Works Superintendent Riverblood stated meetings are to be held to review the cost of the land.

6.03: April Agenda Items

It was noted that Commission meetings during the summer held outdoors. The Environmental Expo moving to September and the Tree Sale is part of Clean-up Day in May.

Chairperson Shryock indicated will not be renewing her position on the Park and Recreation Commission. She thanked the Commissioners and Staff for making her time on the Commission enjoyable.

Parks & Assistant Public Works Superintendent Riverblood thanked Chairperson Shryock for her decade plus of service and the accomplishments of the Commission over the past 12 years and the great impact on the community.

7. ADJOURNMENT

Motion by Commissioner Chubb, seconded by Commissioner Barr, to adjourn the meeting.

Motion carried. Voting Yes: Chairperson Shryock, Commissioners Chubb, Barr, Minke, Fyten, and Olsen. Voting No: None. Absent: Commissioner Bennett.

The Park and Recreation Commission meeting adjourned at 7:15 p.m.

Respectfully submitted,

Mark Riverblood
Parks & Assistant Public Works Superintendent

Drafted by Debbie Wolfe
TimeSaver Off Site Secretarial, Inc.

Park and Recreation Commission

5. 1.

Meeting Date: 04/11/2013

By: Mark Riverblood, Engineering/Public Works

Title:

Presentation: Second Annual 'Bark for Life' Event at The Draw - April 27th, 2013

Background:

Ramsey resident Kimberly Gust is organizing the Second Annual Bark for Life fundraiser at The Draw April 27th from 9 AM until 1 PM. (She will review last years event and invite participants to the 2013 fundraiser. Two slides from 2012, and a Power-Point on the up-coming occasion are attached for web viewers who wish to learn more.)

The American Cancer Society Bark for Life of the Anoka Area is a non-competitive walking event for dogs and their owners to raise funds and awareness in the fight against cancer. The American Cancer Society Bark For Life is a fundraising event that honors the care-giving qualities of our canine “best friends.” This event is similar to the Relay for Life, but this event honors the life-long contribution of our Canine Caregivers. It presents an opportunity for people to be empowered through their canine companion partnerships and to contribute to the fight against cancer. Canine companions represent unconditional love, joy, security, compassion, and no judgments of human abilities or appearances. The American Cancer Society Bark For Life is an incredible way to “take a bite out of cancer,” smile, and make new friends – canine and human.

Notification:

Observations/Alternatives:

Funding Source:

This presentation highlights a fundraiser for the American Cancer Society.

Staff Recommendation:

Action:

Attachments

[Image from 2012](#)

[Participants 2012](#)

[2013 details](#)

Form Review

Inbox
Grant Riemer

Reviewed By
Grant Riemer

Date
04/05/2013 10:15 AM
Started On: 04/05/2013 09:17 AM

Form Started By: Mark Riverblood

Final Approval Date: 04/05/2013







AMERICAN CANCER SOCIETY
BARK FOR LIFE™
A CANINE EVENT TO FIGHT CANCER

**2nd Annual
Bark For Life of the Anoka Area
at the
The Draw
within the COR at Ramsey**

Saturday, April 27, 2013

What is a “Bark For Life”

- Bark For Life is an American Cancer Society (ACS) Relay For Life fundraising event that ***honors the caregiving qualities of canine companions*** and ***supports the ACS life saving mission.***
- Non-competitive walking event for dogs and their owners to raise funds and awareness in the fight against cancer.



AMERICAN CANCER SOCIETY RELAY FOR LIFE

Celebrate.

Remember.

Fight Back.

How does the money raised benefit canines?

- ACS fundraising goes directly to human cancer research and indirectly also benefits dogs
- Dogs get the same cancers as people
- Canine cancer treatment and medications are the result of human research results



Bark For Life Location

- The Draw Park
 - Dog friendly
 - Paved walking trail loop
 - Adequate parking
 - Access to water
 - Can accommodate the walk and activities

Keeping Participants Safe



- Dogs leashed at all times
 - 6’ maximum length
- Dogs must be at least 6 months old to attend
- All dogs’ (and participants) space must be respected
- Owners must be prepared to “pick up” after their dog
- A veterinarian will be onsite for the entire event
- A committee member has authority to remove an anti-social dog

Bark For Life Logistics

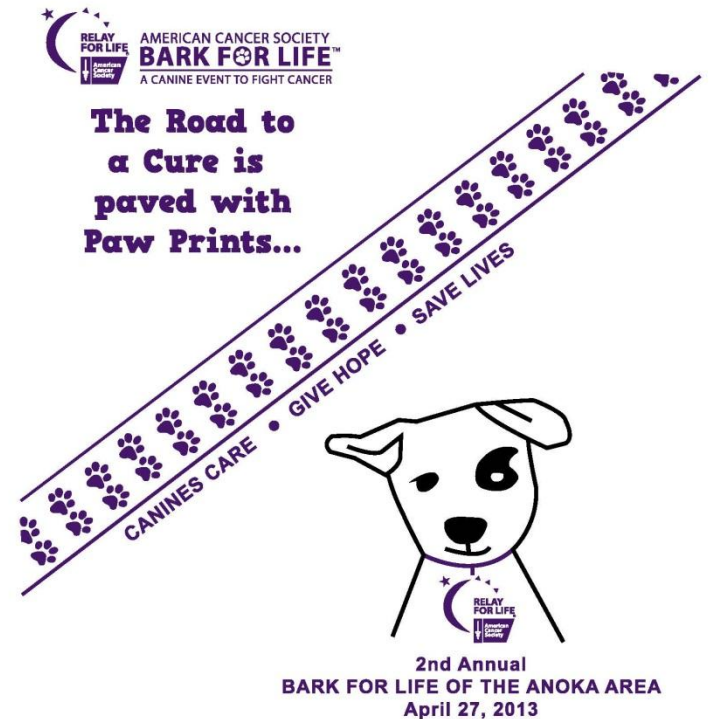
- Important logistics:
 - Trash cans
 - Doggie mess bags
 - Electricity
 - Signs (start sign, directions, ACS track signs, vendor signs, etc.)
 - Portable toilets
 - Sound system
 - Tents, tables, chairs
 - Onsite vet for canine emergencies
 - EMTs for human emergencies

Business Community Involvement and Recognition

- Promotes the canine presence in the community and reaches out to those individuals to get involved in the Bark For Life
- Examples include:
 - Dog specialty stores or bakeries
 - Kennels
 - Pet stores
 - Obedience training services
 - Pet photographers
 - Invisible fence companies

Sponsorship Opportunities

- Sponsorship opportunities are available from \$100 - \$2,500
- Recognition of sponsor at Bark For Life and Relay For Life – dual sponsorship



Bark For Life Sample Agenda

9 a.m. – 10 a.m. Registration

- Participant and dog: \$20 pre-registration; \$25 on-site registration (ACS donation)
- ACS Educational Materials, Program Information
- Entertainment

10 a.m. Opening Ceremony

- Recognition of Sponsors
- Event Overview & Cancer Survivor Testimony
- Blessing of the Animals

10:15 a.m. *Bark For Life* Begins

- Cancer Survivors and their dogs lead the walk
- Walk with ACS educational signs posted along the route
- “Bone-Afide” Memories to mark the path (\$5/bone ACS donation)

10 a.m. – 1 p.m.

Additional Fundraising Activities

- Event Host Open House
- Canine Games and Activities
- Entertainment
- Food Vendors

Registration Information

- Pre-Registration Fee:
 - \$20 (ACS donation)
- Day of event Registration Fee:
 - \$25 (ACS donation)
- All Registered dogs will receive a “Bark For Life” Bandana and Dog Tag



For more information, contact:

BarkforLife.R4L.Anoka@gmail.com

or call/text 612-237-8219

Check us out on:

[Facebook.com/BarkForLifeofAnokaArea](https://www.facebook.com/BarkForLifeofAnokaArea)

ACS is the Official Sponsor of More Birthdays

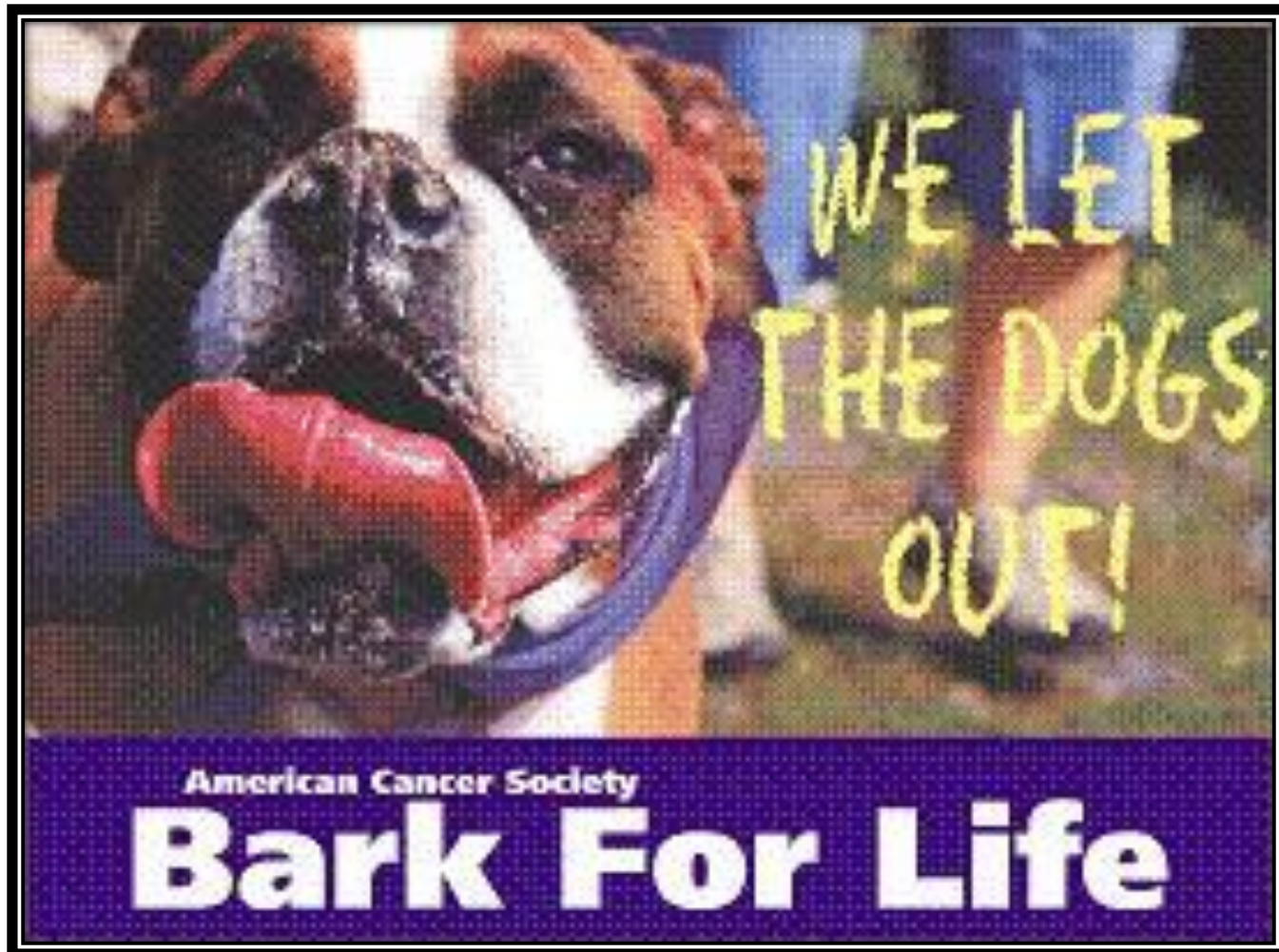
Join us for the **BARK FOR LIFE...**
each pup gets us closer to a world with **MORE BIRTHDAYS!**

Imagine
a world with more
birthdays.

THE OFFICIAL SPONSOR OF BIRTHDAYS.™



THANK YOU
to the City of Ramsey!



Park and Recreation Commission

5. 2.

Meeting Date: 04/11/2013

By: Mark Riverblood, Engineering/Public Works

Title:

2013 Election of Officers

Background:

The Park and Recreation Commission Chair position and Vice Chair terms technically expired on December 31, 2012. Given that one Commission member was anticipated to be leaving, and with City Council's appointment and reappointment process occurring in February, the nomination of officers was not placed on the agenda until this meeting.

The Park and Recreation Commission will need to appoint a 2013 Chair and Vice Chair as part of the regular April meeting.

Notification:

Observations/Alternatives:

Funding Source:

N/A

Staff Recommendation:

Seperately, motion to appoint the 2013 Chair and Vice Chair .

Action:

Motion to appoint _____ as 2013 Chair of the Park and Recreation Commission.

And,

Motion to appoint _____ as 2013 Vice Chair of the Park and Recreation Commission.

Form Review

Inbox
Grant Riemer

Reviewed By
Grant Riemer

Date
04/04/2013 08:18 AM
Started On: 04/04/2013 08:03 AM

Form Started By: Mark Riverblood

Final Approval Date: 04/04/2013

Park and Recreation Commission

5. 3.

Meeting Date: 04/11/2013

By: Mark Riverblood, Engineering/Public Works

Title:

Recommend Shelter and Restroom for Riverdale Park – 2013 Capital Improvement

Background:

A restroom and also shelter had been discussed for many years for Riverdale Park as a stand-alone improvements as a annual Parks Capital Improvement. In 2009, the City of Ramsey applied for Federal funding for the Mississippi River Trail, with these two improvements as a part of the local match. The City of Ramsey (and Anoka) were awarded \$387,808 for this trail project which is in the final design and engineering process now, and will be let for bid later this summer, with construction occurring thereafter.

In January of 2013 City Council adopted Resolution 13-01-007 warranting that the shelter and restroom would be built as part of the Federal trail project approvals.

To progress toward the project construction and completion, Staff has assembled the quotes and costs that make up the various components and tasks. The first was the selection of the hexagonal shelter identical to the one previously chosen by the Commission at Sunfish Lake Park (with cladding for the support posts). This cost was obtained using the State Bid Contract.

The next major part of the project was to obtain quotes for the restroom. The style of construction and specifications were the same as the successful building installed at Emerald Pond Park in the spring of 2008. Parks' Lead-person Mike Berge organized the process and issued the summary in the text below. Staff is recommending CTX in the amount of \$35,320. Highlighted are areas two of the companies could not meet the City's specs - and to somehow add, or purchase the same product or services that CTX provides would result in a total cost higher than the one recommended.

"Company #1 - CXT Concrete Buildings is the same company we purchased the Emerald Pond Park restroom from. All of the inside fixtures have electronic flush with stainless steel plumbing. It will have a hot water heater, magnetic door locking system and more. In this quote CXT will make all final connections to utilities once the building is set in place. The final connections aspect is very beneficial since the city would have to hire licensed contractors for these connections. CXT has done this multiple times which will ensure us that it will get done correctly and safely.

Amount of quote - \$35,320.00

Company #2 – Huffcutt Concrete Inc is another company that provided a quote. This company's restroom is similar to CXT with all its options except a couple items. First one is they do not have the option of upgrading their plumbing fixtures from chrome plated to stainless steel. We prefer stainless steel due to the fact that it will hold up better and keep its appearance much longer than chrome plated. The other option that this company does't offer is the final connections of utilities to the building. The city would have to hire a licensed plumber and there will be additional cost to a contracted electrician to make these final connections. The cost for these contractors may be unknown until they complete the job.

Amount of quote - \$33,130.00

Company #3 – NCI (Norwalk Concrete Industries) is the third company that gave us a quote for this restroom. They had some of the options the other companies were offering but not all of them. NCI did not have an option for electronic flush on any of the fixtures. They also didn't have an option for a hot water heater or final connections to utilities

Amount of quote - \$34,025.00

Conclusion to these quotes – I recommend the city go with CXT. Their restroom meets specifications and has all the features that the city requires. We have used this company's product in the past and we are very satisfied with the ease of maintenance and durability of the building."

Notification:

Observations/Alternatives:

Below is the aggregate of the proposed 2013 project:

Riverdale Restroom and Shelter Budget Detail

Restroom

Restroom with tax, delivery, crane and hook up \$37,720
Electric service \$900
SAC charge \$2,435
Sewer and water service \$6,950
Restoration (sod) \$200
Contingency \$1,795
Subtotal \$50,000

Shelter

Hexagonal shelter with tax, delivery, and custom cladding \$12,713.51
Construction/labor for shelter and slab \$12,720
Drinking fountain with attachments \$6,594.19
Exposed aggregate slab for fountain \$1,200
Restoration (sod) \$200
Contingency \$572.30
Subtotal \$34,000

Riverdale Park restroom and shelter not-to-exceed total = \$84,000

Funding Source:

The shelter and restroom are listed within the 2013 CIP as funded by the Park Trust Fund in the amount of \$77,000. The present balance within the fund is approximately \$2.4 million dollars.

The drinking fountain and mister is also shown within the 2013 as funded from the Park Trust Fund at \$7,000.

Staff Recommendation:

Staff recommends approval of the 2013 Capital Improvement as presented within the budget detail, with the 'mister' purchased with the drinking fountain to be located and installed at Central Park as part of Riverdale's project (as intended).

Action:

Motion to recommend to City Council a not-to-exceed amount of \$84,000 from the Park Trust Fund for Riverdale Park's shelter, restroom and drinking fountain as presented within the 2013 Capital Improvement Plan.

Attachments

Location map

Shelter and Restroom location exhibit

Shelter spec sans cladding

Example restroom and shelter

Form Review

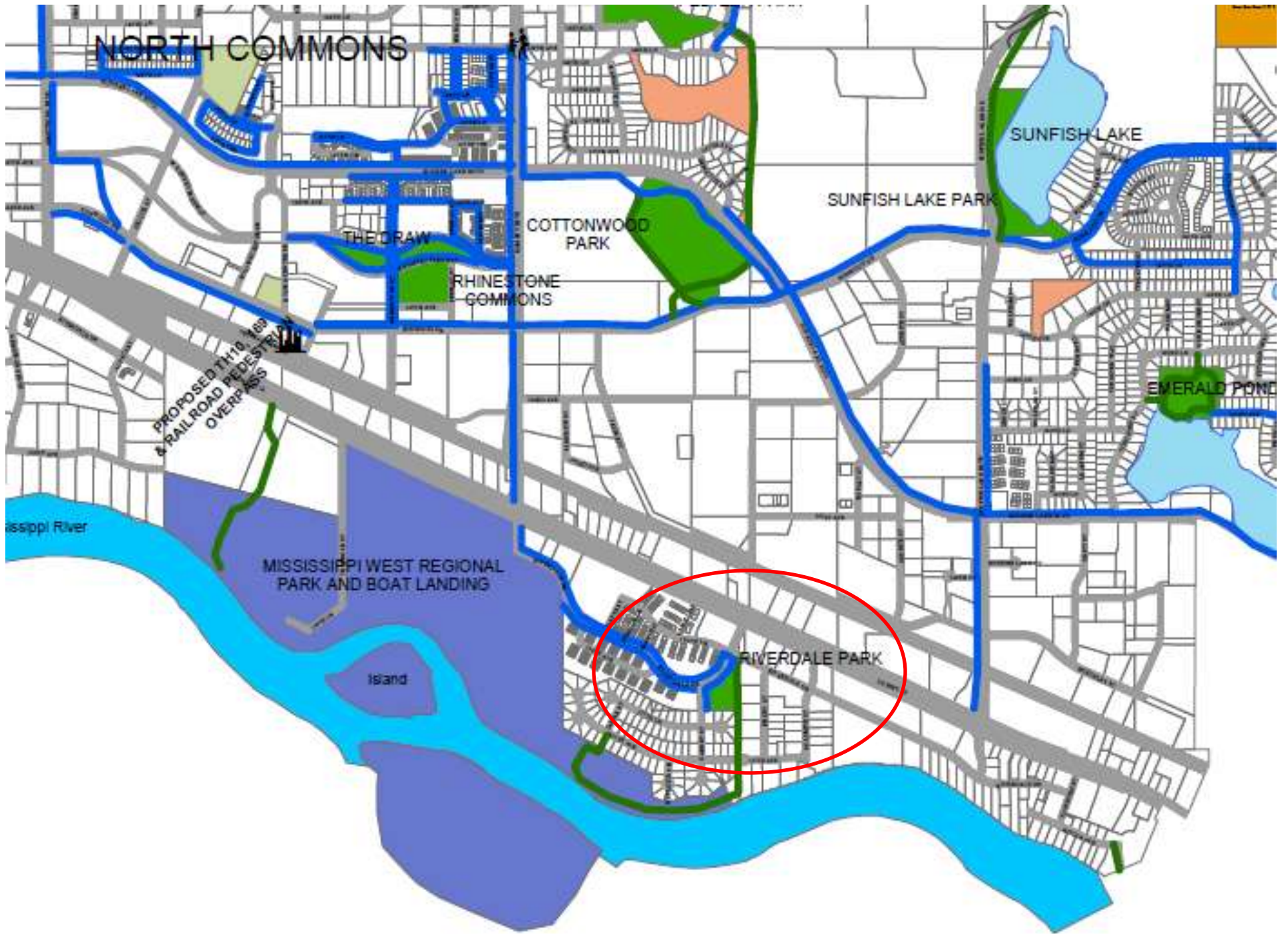
Inbox
Grant Riemer

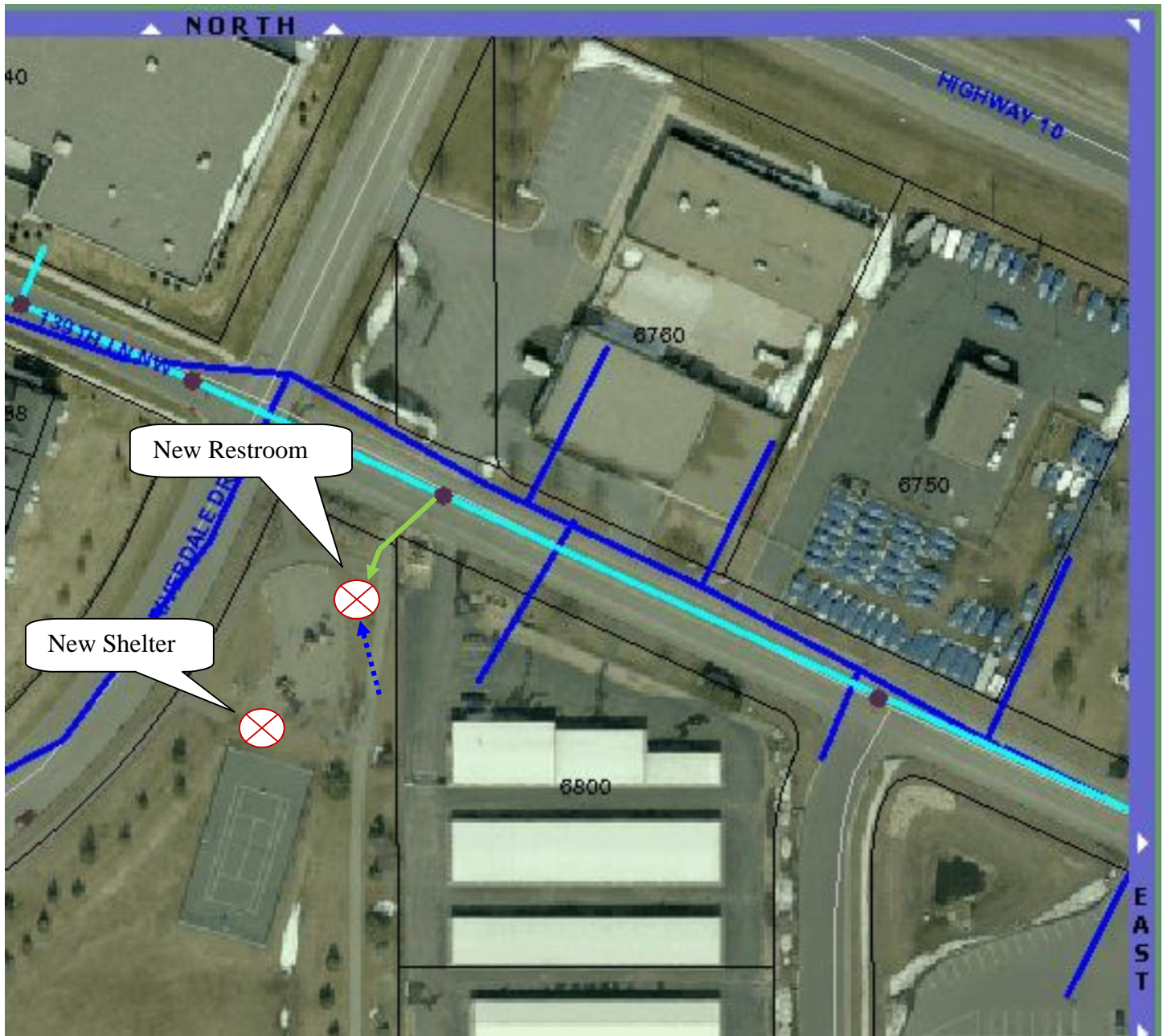
Reviewed By
Grant Riemer

Date
04/04/2013 11:52 AM
Started On: 04/04/2013 09:28 AM

Form Started By: Mark Riverblood

Final Approval Date: 04/04/2013





Green line would be new PVC sanitary connection to manhole

Blue dashed line represents new 1 1/4 poly water line connection to potable water routed to irrigation supply

(Light blue existing sanitary sewer with manholes)

(Dark blue existing watermain)

Model: Steelworx Hexagonal Shelter w/ Vented Top, 20'
Model # HX-20-SW-VT-TG

Manufacturing Mission: To provide all prefabricated components and installation instructions for a 20' hexagonal (measured from eave to eave) free standing bolt together, tubular steel constructed shelter kit.

Design Criteria: Structure shall be designed for a 50 lb live load and a 90 mph wind load capacity, but can also be designed based on specific site requirements upon request. All structural members are ASTM A-500 U.S. grade B steel. Welded connection plates shall be ASTM A-36 hot rolled steel. All fabrication performed to latest AISC standards by AWS Certified welders. All framing connections are done using A325 grade bolts within concealed access openings from above and will later be concealed by the roofing. All roof framing shall be flush against the roof decking to eliminate the possibility of bird nesting.

Tubular Steel Columns and Beams: Standard column dimension shall be 5" x 5" x 3/16" tubular steel welded to 5/8" base plates for surface mounting. Main support beams are 7" x 5" x 3/16" and purlins are 5" x 3" x 1/8". Steel sizes are preliminary and may change due to ongoing review and final engineering.

Roof Deck: 2" x 6" (nominal) #1 Grade, end matched, single tongue and groove with V-joint bottom face, kiln-dried to an average of 15% moisture content, Southern Yellow Pine.

Roofing: 24 Ga. pre-cut steel Multi-Rib panels with Kynar 500 finish in a variety of colors with white underside. Standard roof slope is a 4/12 pitch with a eave height of 7'-6". Attached to decking with exposed screws painted to match roof color. Matching 24 Ga. trim included.

Frame Finish: All steel framework will receive a corrosion protective TGIC Polyester powder coat, electro-statically applied and cured at 400°F. A large selection of standard colors are available.

Foundation: All columns need to be anchored to concrete footings (footing design provided separately). Columns can be surface mounted to footings with anchor bolts at or below finish slab elevation or they can be embedded directly into the footing without base plates upon request. Anchor bolts and bracing templates are included. Optional base plate covers are available at an additional cost.

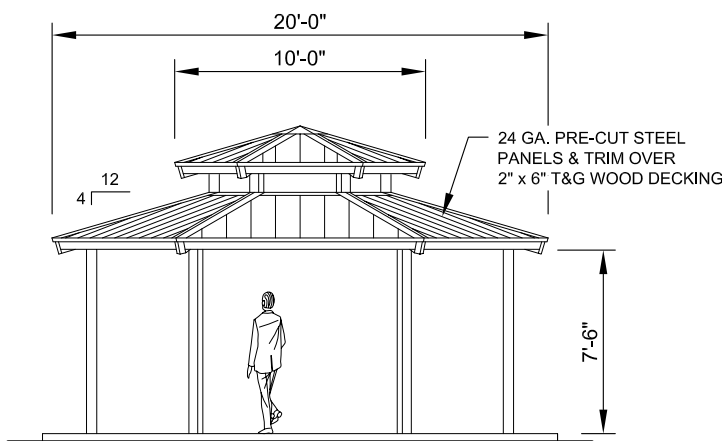
Hardware: All structural hardware and roofing fasteners shall be provided.

Warranty: 10 years against manufacturer defects.

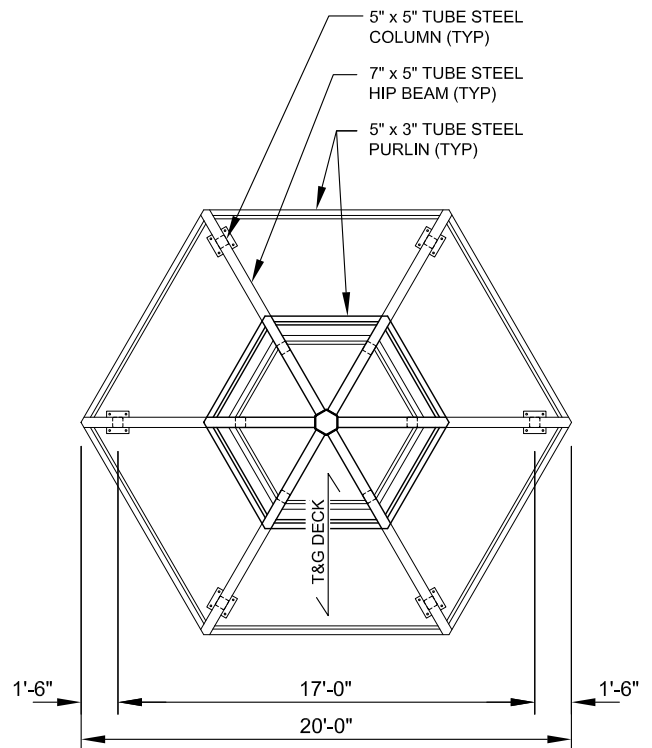
Not Included: Concrete work of any kind, unloading of product and installation.

Additional Options:

- Flexibility of Design
 - Such as: Height and Pitch
- Additional Engineering
- Variety of Colors
- Decorative Railings, Lattice, Braces, Trim, etc.
- Cupolas and Rooftop Accs.
- Column Style Variations
- Provisions for Electrical
- Lexan Wind Screens
- Tongue & Groove Roof Decking
- Asphalt Shingles, Standing Seam, Cedar Shake, or Clay Tile Roofing
- Composite Finished Ceiling
- Solar Panels & Solar Lighting
- Site Furnishings and Accs.



ELEVATION
SCALE: NTS



FRAMING PLAN
SCALE: NTS

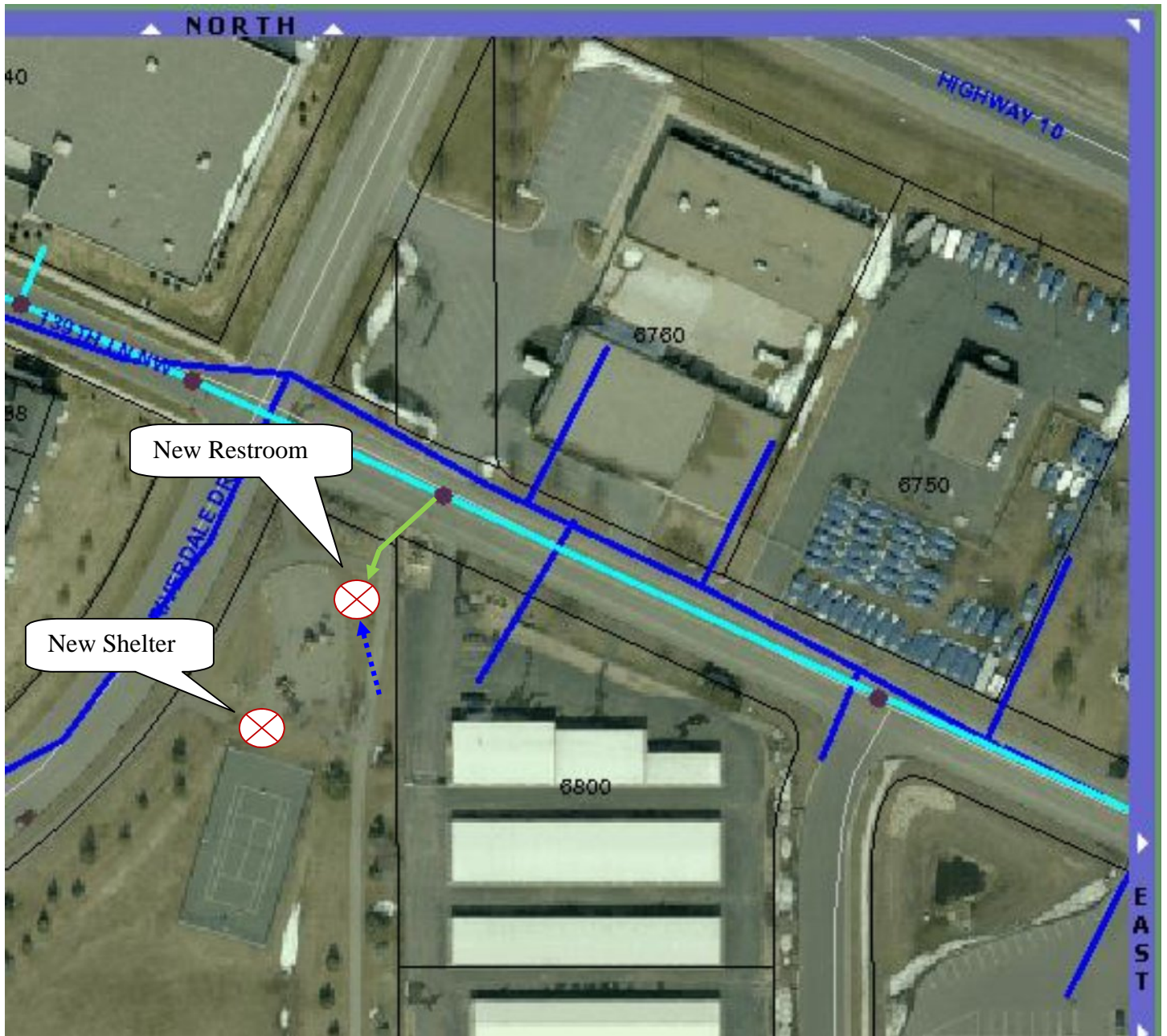


11800 East 9 Mile Road
 Warren, MI 48089
 Office: (586) 759-5490
 Fax: (586) 754-9130
 Toll Free: (800) 657-6118
 Email: info@coverworx.net
 www.CoverWorx.net

Steelworx Hexagonal Shelter w/ Vented Top - 20'

Model: HX-20-SW-VT-TG

DESIGN SPECIFICATIONS



Green line would be new PVC sanitary connection to manhole

Blue dashed line represents new 1 1/4 poly water line connection to potable water routed to irrigation supply

(Light blue existing sanitary sewer with manholes)

(Dark blue existing watermain)

Park and Recreation Commission

5. 4.

Meeting Date: 04/11/2013

By: Mark Riverblood, Engineering/Public Works

Title:

Consider Park and Recreation Commission Outdoor Meeting Schedule

Background:

For many years, the Park and Recreation Commission have held regular meetings outdoors in the months of May through September (weather permitting). This provided the Commission an opportunity to inspect and comment on parks and projects as a group, and it afforded residents’ access to the Commission on a neighborhood level. On the occasions of inclement weather, the Commission would hold the regular meetings at 6:30 p.m. at City Hall. The purpose of this case is to confirm the Commission’s desire for outdoor meetings in 2013 and, if so, what the locations will be.

The following is a partial proposed schedule with an opportunity noted in brackets as a rationale – if the Commission agrees to continue meeting in parks for the summer.

May: Elmcrest Park (Discuss Building and Playground projects)

June:

July: North Commons (Review play structure and phase II progress)

August: Riverdale Park (Inspect shelter and restroom project)

September: The Draw (Park Patron Picnic)

After the Commission decides where the meetings will be held, their locations will be published in the Ramsey Resident newsletter and on the web.

Notification:

Observations/Alternatives:

Funding Source:

None required

Staff Recommendation:

Action:

Determine whether outdoor meetings are desired for 2013 – and if so the locations.

Form Review

Inbox
Grant Riemer

Reviewed By
Grant Riemer

Date
04/04/2013 09:57 AM

Form Started By: Mark Riverblood

Started On: 04/04/2013

Final Approval Date: 04/04/2013

Park and Recreation Commission

6. 1.

Meeting Date: 04/11/2013

By: Mark Riverblood, Engineering/Public Works

Title:

Commission/Staff Input

Background:

- Volunteer Tree Planting at North Commons – Saturday, May 18th
- Environmental Expo moved to September
- Recent City Council action on Capital Improvements
- Pending Great River Energy Prairie Installation at Alpine park
- New Windows for the Park Center Building at Central Park

Notification:

Observations/Alternatives:

Funding Source:

.

Staff Recommendation:

Action:

Form Review

Inbox
Grant Riemer

Reviewed By
Grant Riemer

Date
04/04/2013 11:58 AM
Started On: 04/04/2013 09:14 AM

Form Started By: Mark Riverblood

Final Approval Date: 04/04/2013