

# CULLINAN RIGGING BUILDING ADDITION

## CONSTRUCTION PLANS FOR AGGREGATE BASE, CONCRETE PAVING, CURB & GUTTER, GRADING, STORM SEWER AND MISCELLANEOUS CONSTRUCTION FOR SHARP & ASSOCIATES CITY OF RAMSEY

### GOVERNING SPECIFICATIONS

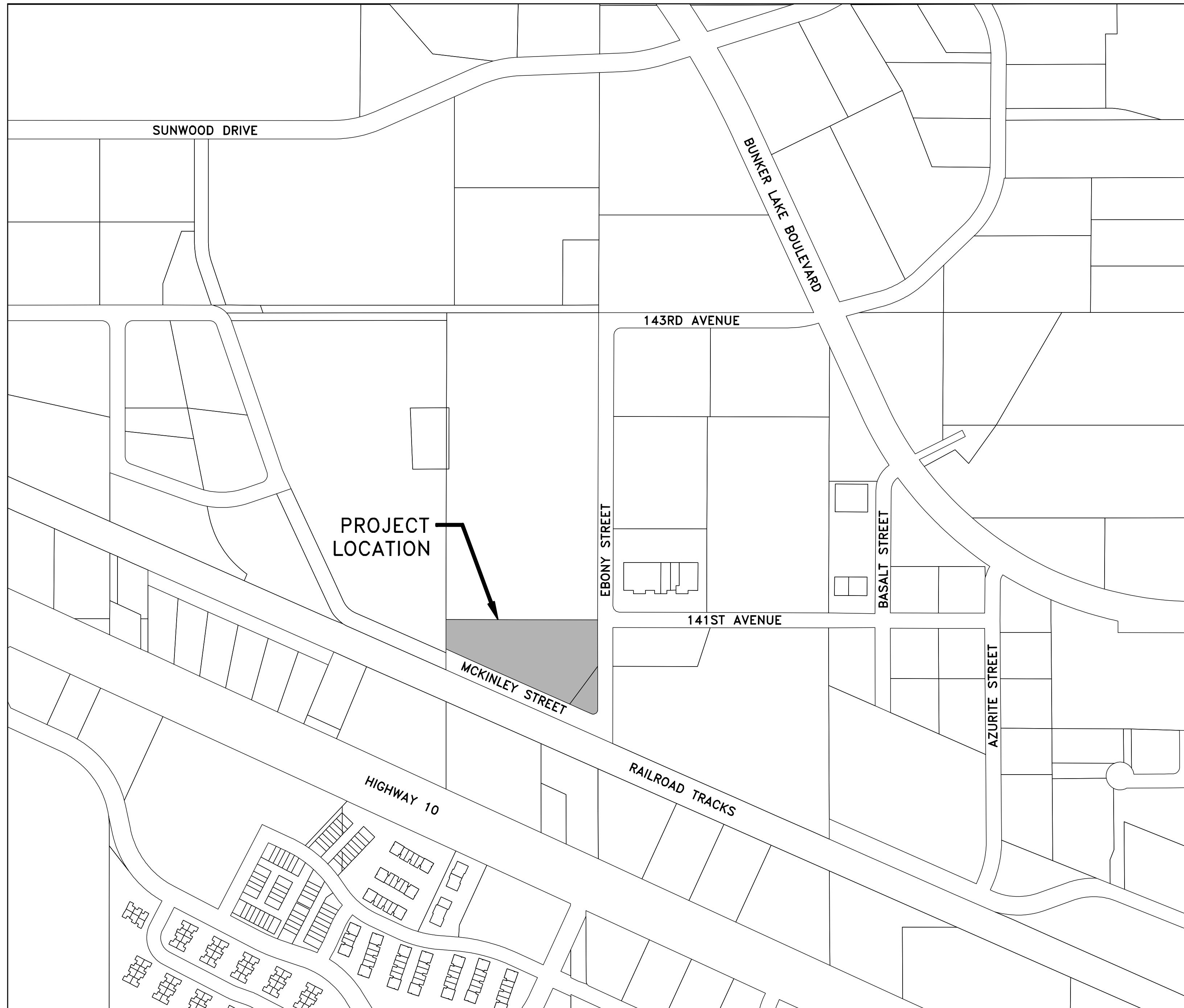
THE 2005 EDITION OF THE MINNESOTA DEPARTMENT OF TRANSPORTATION  
"STANDARD SPECIFICATIONS FOR CONSTRUCTION" SHALL GOVERN.

ALL FEDERAL, STATE AND LOCAL LAWS, REGULATIONS, AND ORDINANCES  
SHALL BE COMPLIED WITH IN THE CONSTRUCTION OF THIS PROJECT.

#### SHEET INDEX

THIS PLAN CONTAINS 4 SHEETS

SHEET NO.	DESCRIPTION
1	TITLE SHEET
2	CONSTRUCTION NOTES, DETAILS AND PROJECT LEGEND
3	EXISTING TOPOGRAPHY AND REMOVALS PLAN
4	GRADING, DRAINAGE AND EROSION CONTROL PLAN

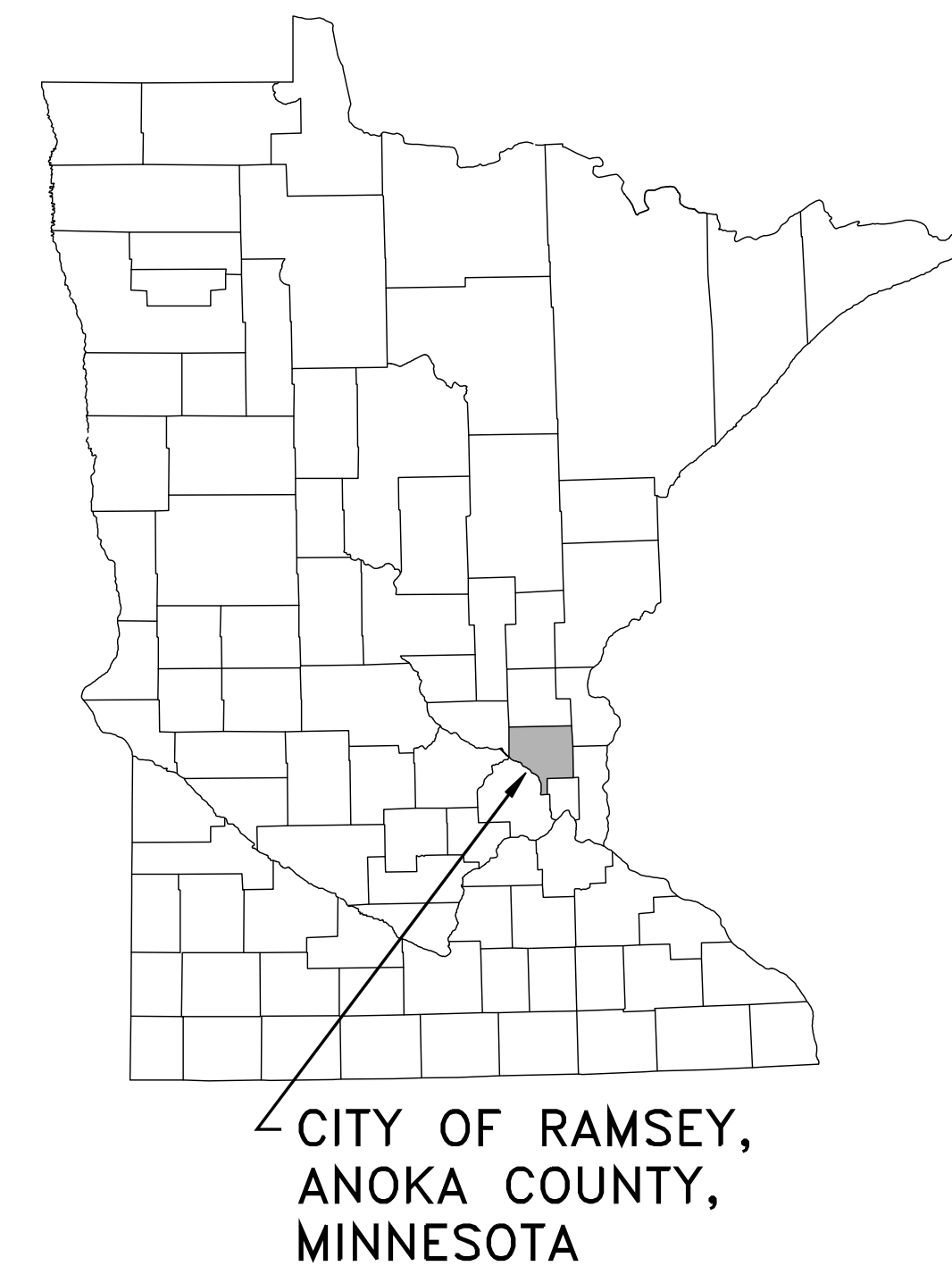


#### BUILDER

SHARP & ASSOCIATES  
10907 93RD AVENUE N.  
MAPLE GROVE, MN 55369  
DENNIS SHARP  
763-425-2002  
763-425-6428 (FAX)

#### ENGINEER/SURVEYOR

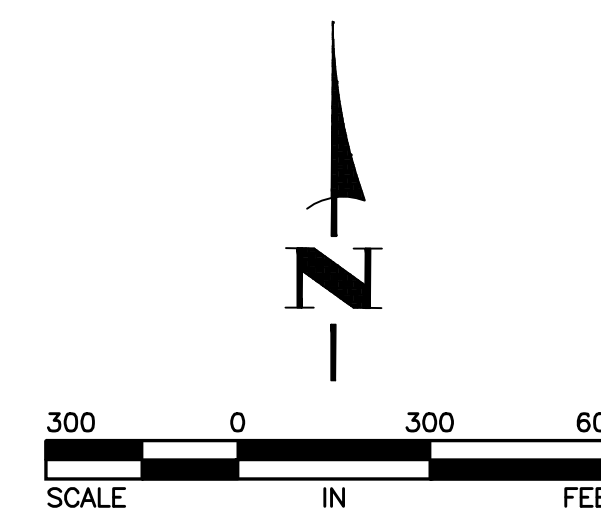
HAKANSON ANDERSON  
3601 THURSTON AVENUE  
ANOKA, MN 55303  
TIMOTHY A. EGGERICHS, P.E.  
CHARLES R. CHRISTOPHERSON, P.L.S.  
763-427-5860  
763-427-0520 (FAX)



May 10, 2013 10:41am K:\cad\_eng\projects\private\3244.08\dwg\324408TITLE.dwg

**Hakanson  
Anderson**  
Civil Engineers and Land Surveyors  
3601 Thurston Ave., Anoka, Minnesota 55303  
763-427-5860 FAX 763-427-0520

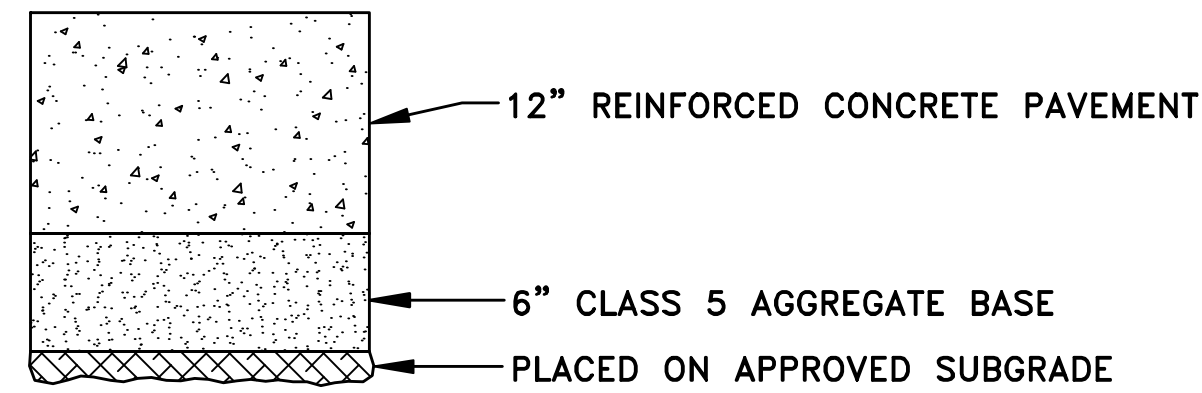
THE SUBSURFACE UTILITY INFORMATION IN THIS PLAN IS UTILITY QUALITY LEVEL D. THIS QUALITY LEVEL WAS DETERMINED ACCORDING TO THE GUIDELINES OF CI/ASCE 38-02, ENTITLED "STANDARD GUIDELINES FOR THE COLLECTION AND DEPICTION OF EXISTING SUBSURFACE UTILITY DATA."



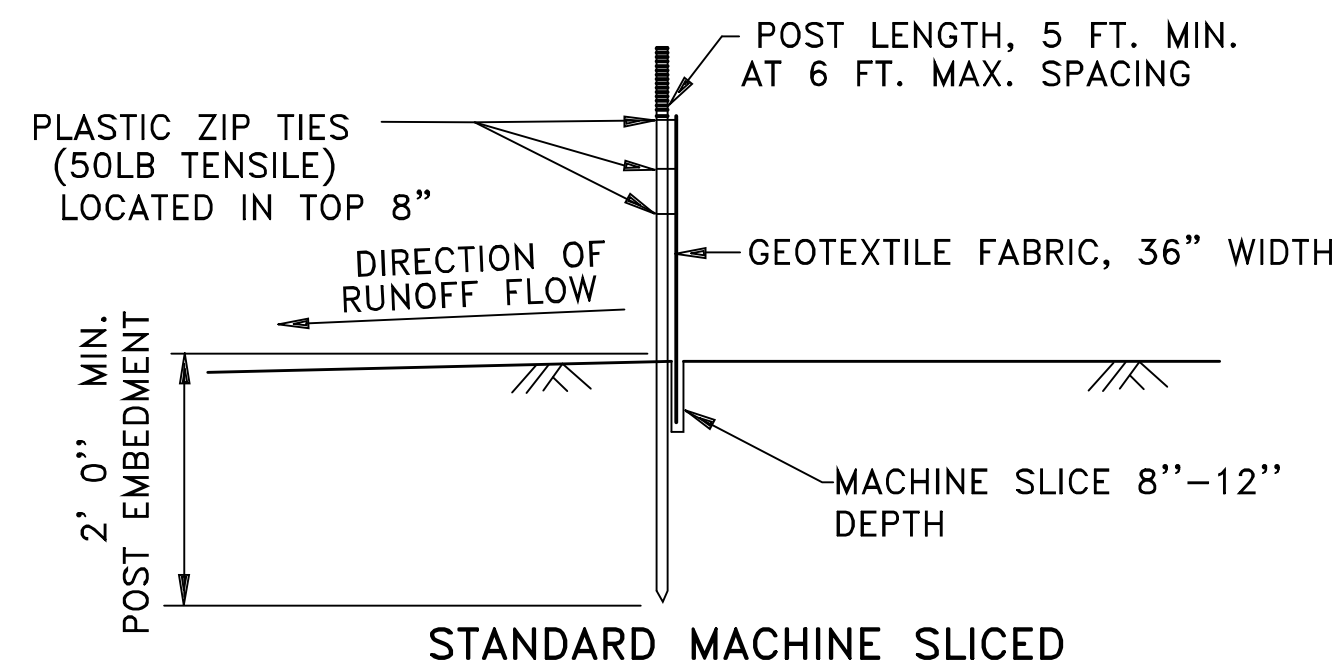
I hereby certify that this plan, specification, or report was prepared by me or under my direct supervision and that I am a duly Licensed Professional Engineer under the laws of the State of Minnesota.

*Tim Eggerichs*      43362      DATE 5/7/13  
TIMOTHY A. EGGERICHS, P.E.      LIC. NO.  
HAKANSON ANDERSON  
DESIGN ENGINEER

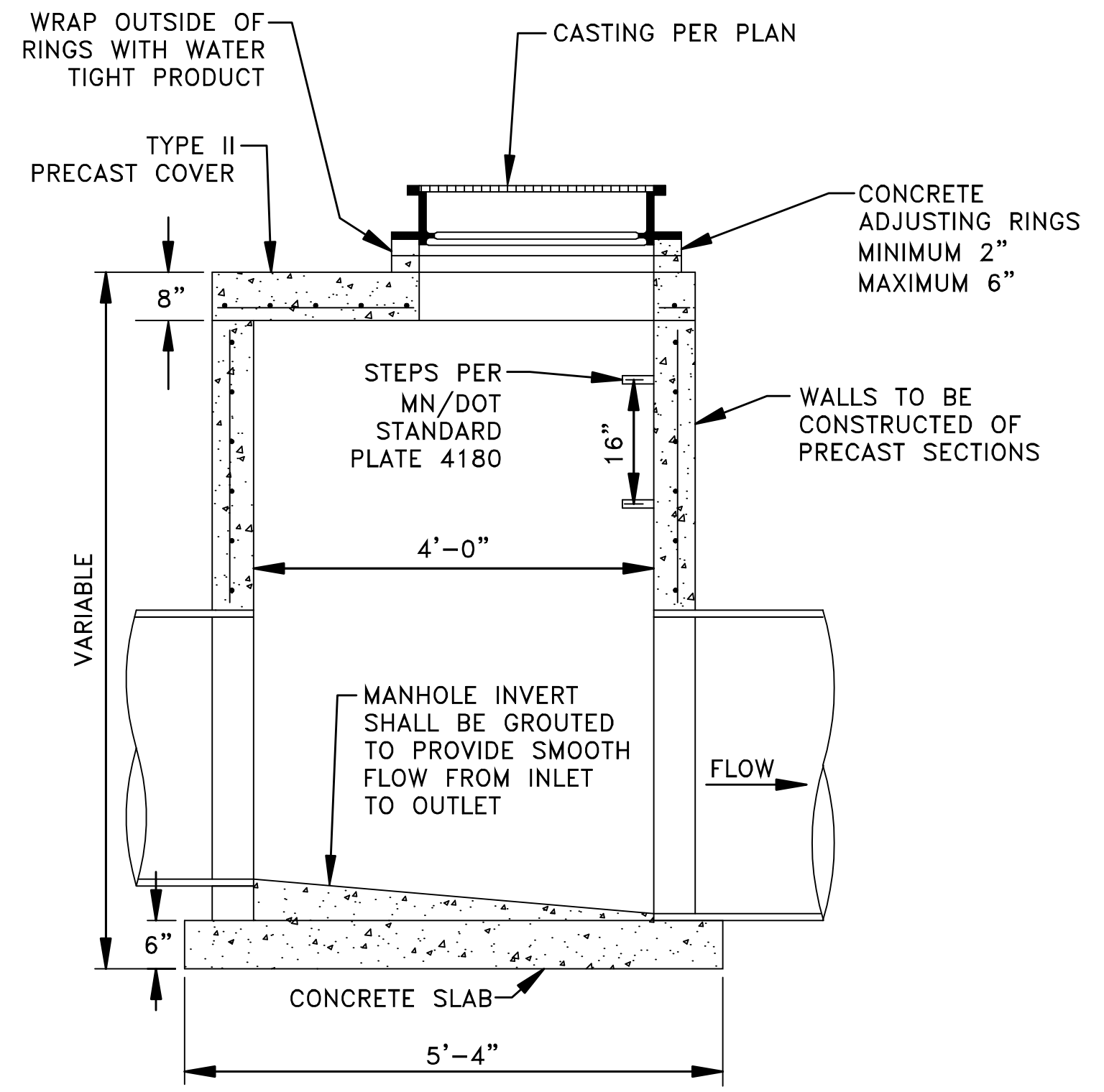
DATE	REVISION



1  
2 CONCRETE PARKING LOT SECTION  
NO SCALE



2  
2 SILT FENCE DETAILS  
NO SCALE



3  
2 SLAB-TOP MANHOLE  
NO SCALE

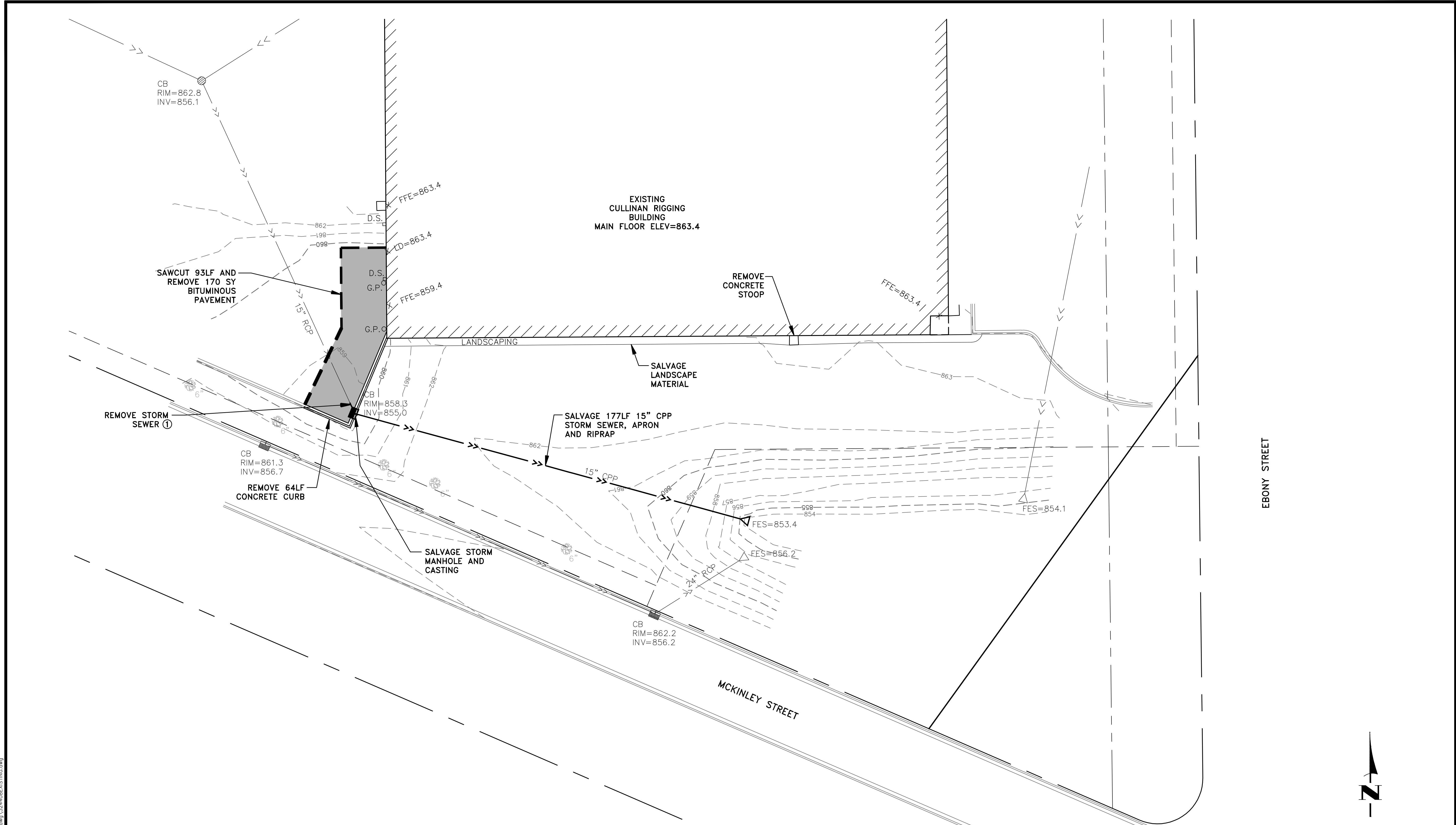
**LEGEND**

--- 906 ---	EXISTING CONTOUR
=====	PROPERTY LINE
-----	RIGHT-OF-WAY LINE
- - - - -	GAS LINE EASEMENT
- . - . -	DRAINAGE AND UTILITY EASEMENT
=====	EXISTING CONCRETE CURB & GUTTER
--- >> ---	EXISTING STORM SEWER
◁	EXISTING APRON
▨	EXISTING CATCH BASIN
🌳	EXISTING DECIDUOUS TREE
--- 906 ---	PROPOSED CONTOUR
--- >> ---	PROPOSED STORM SEWER
▨	PROPOSED CATCH BASIN
⊙	PROPOSED STORM SEWER MANHOLE
=====	PROPOSED CONCRETE CURB & GUTTER
●-●-●-●	SILT FENCE PER (2/2)
⇒	DRAINAGE ARROW
(2/3)	DETAIL NUMBER
(3)	SHEET NUMBER

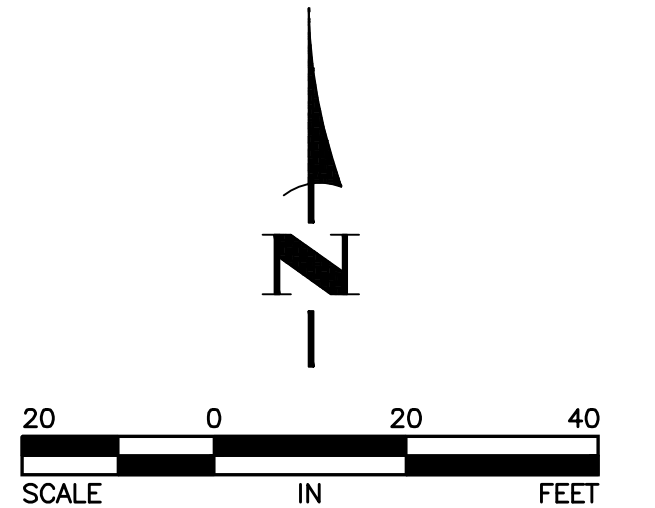
- GENERAL CONSTRUCTION AND SOILS NOTES:**
- WHEN PLACING NEW PAVEMENT ADJACENT TO INPLACE PAVEMENT CUT VERTICALLY TO THE BOTTOM OF INPLACE SURFACING OR TOP OF GRADING SUBGRADE, WHICHEVER IS DEEPER, AT A 1(V):2(H) TO THE BOTTOM OF EXCAVATION.
  - PROVIDE A SAW CUT WHEN PLACING NEW PAVEMENT ADJACENT TO INPLACE PAVEMENT AND AT TERMINI OF CONSTRUCTION TO ENSURE A UNIFORM JOINT.
  - BITUMINOUS AND CONCRETE ITEMS DISTURBED BY CONSTRUCTION SHALL BECOME THE PROPERTY OF THE CONTRACTOR AND SHALL BE DISPOSED OF IN ACCORDANCE WITH Mn/DOT SPEC. 2104.3.
- GENERAL EROSION CONTROL NOTES:**
- EROSION CONTROL SHALL CONFORM TO THE Mn/DOT EROSION CONTROL HANDBOOK.
  - PRIOR TO ANY CONSTRUCTION ACTIVITIES, THE CONTRACTOR SHALL ACQUIRE THE NECESSARY MPCA NPDES STORMWATER PERMIT.
  - ALL EROSION AND SEDIMENT CONTROL MEASURES SHALL BE PROPERLY DISPOSED OF WITHIN THIRTY (30) DAYS AFTER FINAL SITE STABILIZATION.

May 10, 2013 - 10:42am K:\cad\_eng\_projects\private\3244\08\dwg\3244\08\DETAILS.dwg

<table border="1" style="width: 100%; border-collapse: collapse;"> <thead> <tr> <th style="text-align: left;">DATE</th> <th style="text-align: left;">REVISION</th> </tr> </thead> <tbody> <tr><td> </td><td> </td></tr> <tr><td> </td><td> </td></tr> <tr><td> </td><td> </td></tr> <tr><td> </td><td> </td></tr> </tbody> </table>	DATE	REVISION									I hereby certify that this plan, specification, or report was prepared by me or under my direct supervision and that I am a duly Licensed Professional Engineer under the laws of the State of Minnesota.  TIMOTHY A. EGGERICHS, P.E. Date 5/7/13 Lic. No. 43362	DESIGNED BY: TAE DRAWN BY: TAE CHECKED BY: CJJ	 <b>Hakanson Anderson</b> Civil Engineers and Land Surveyors 3601 Thurston Ave., Anoka, Minnesota 55303 763-427-5860 FAX 763-427-0520 www.hakanson-anderson.com	<b>CULLINAN RIGGING BUILDING ADDITION</b>	<b>CONSTRUCTION NOTES, DETAILS AND PROJECT LEGEND</b>  CITY OF RAMSEY, MINNESOTA	SHEET 2 OF 4 SHEETS
DATE	REVISION															



REFERENCE NOTES:  
 ① TOTAL LENGTH WILL BE DETERMINED IN THE FIELD AT THE TIME OF FOOTING CONSTRUCTION.



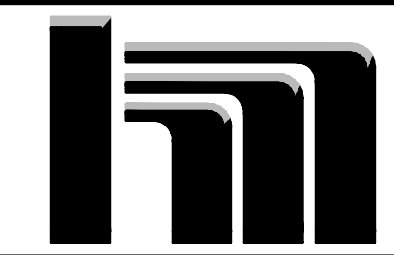
May 10, 2013 - 10:42am K:\cad\_and\_projects\private\3244\_08.dwg\3244\_08EXISTING.dwg

DATE	REVISION

I hereby certify that this plan, specification, or report was prepared by me or under my direct supervision and that I am a duly Licensed Professional Engineer under the laws of the State of Minnesota.

*Timothy A. Eggerichs*  
 TIMOTHY A. EGGERICHS, P.E.  
 Date 5/7/13 Lic. No. 43362

DESIGNED BY:  
TAE  
 DRAWN BY:  
TAE  
 CHECKED BY:  
CJJ

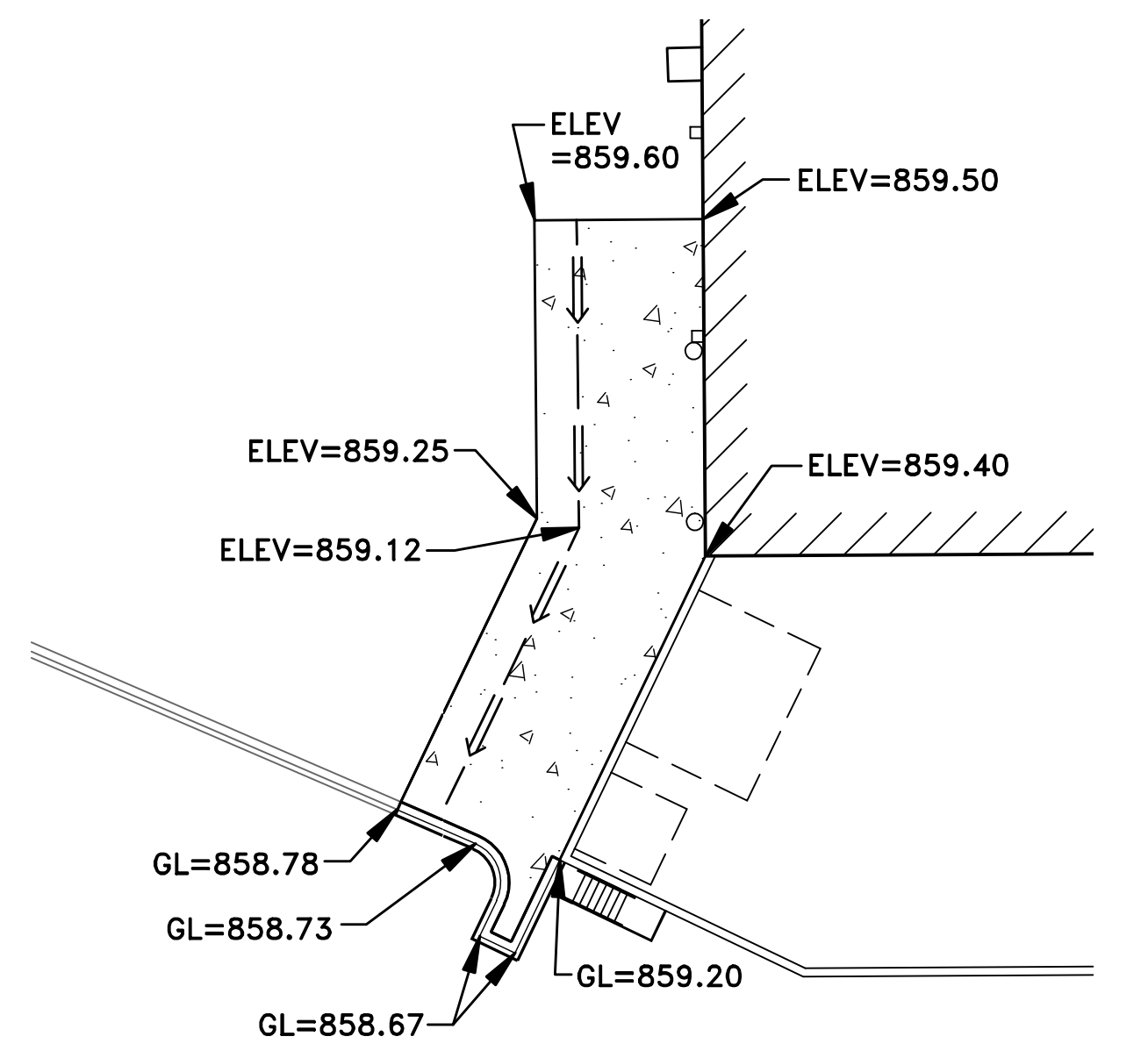
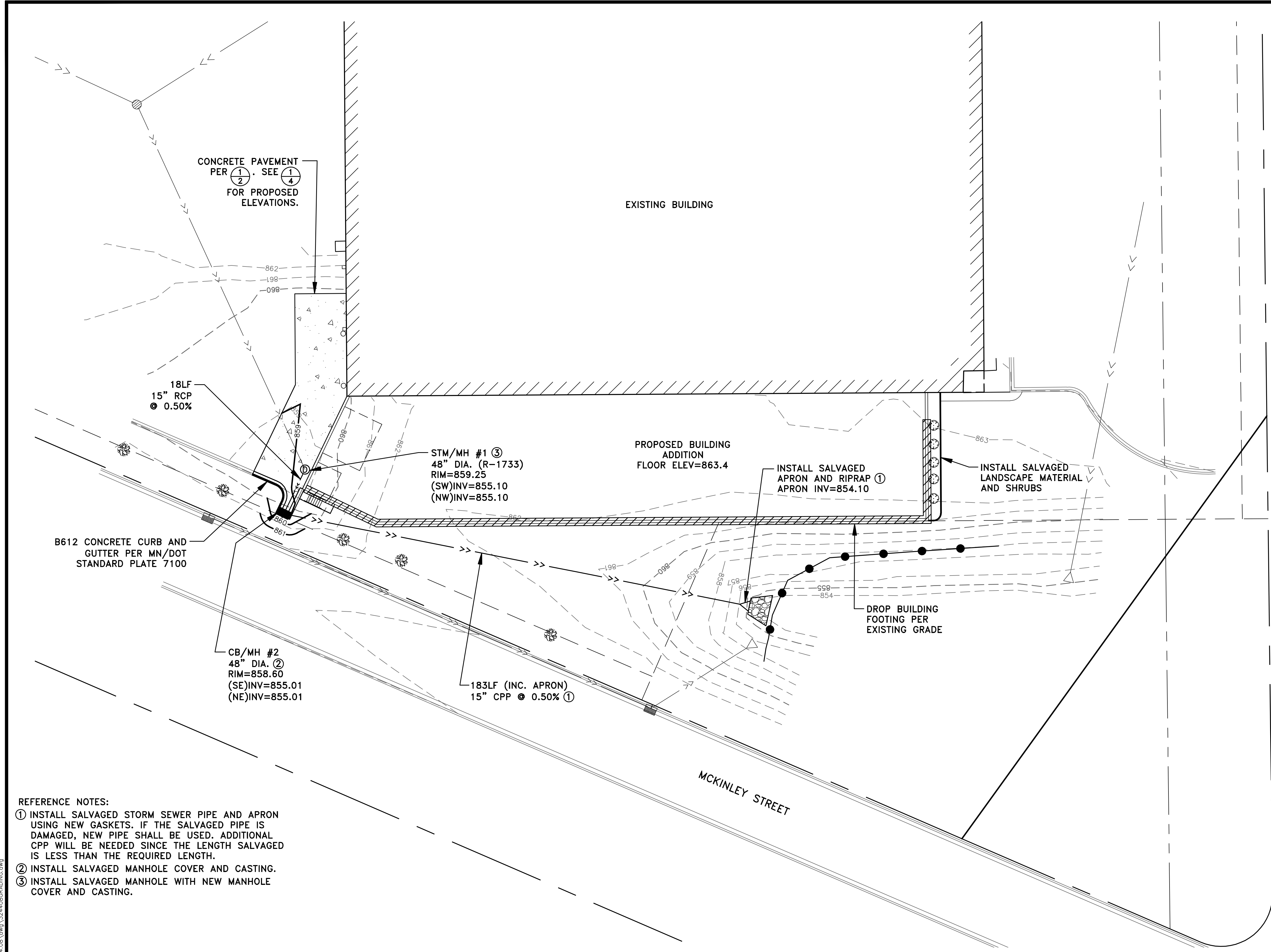


**Hakanson Anderson**  
 Civil Engineers and Land Surveyors  
 3601 Thurston Ave., Anoka, Minnesota 55303  
 763-427-5860 FAX 763-427-0520  
 www.hakanson-anderson.com

CULLINAN RIGGING BUILDING ADDITION

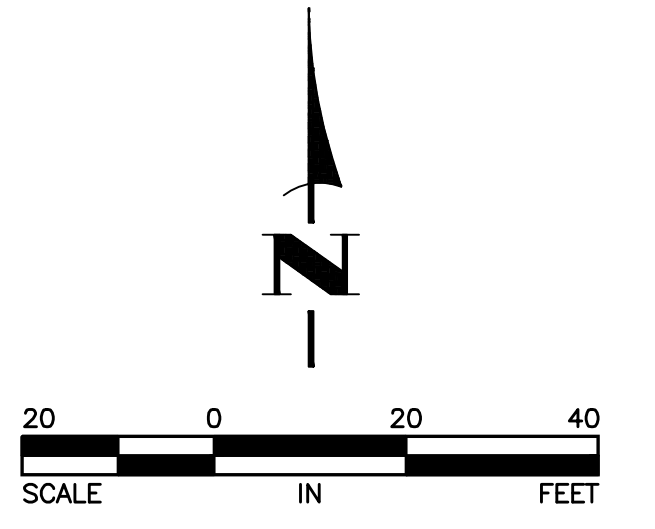
EXISTING TOPOGRAPHY AND REMOVALS PLAN  
 CITY OF RAMSEY, MINNESOTA

SHEET 3 OF 4 SHEETS



1/4 PAVEMENT DETAILS

- REFERENCE NOTES:
- ① INSTALL SALVAGED STORM SEWER PIPE AND APRON USING NEW GASKETS. IF THE SALVAGED PIPE IS DAMAGED, NEW PIPE SHALL BE USED. ADDITIONAL CPP WILL BE NEEDED SINCE THE LENGTH SALVAGED IS LESS THAN THE REQUIRED LENGTH.
  - ② INSTALL SALVAGED MANHOLE COVER AND CASTING.
  - ③ INSTALL SALVAGED MANHOLE WITH NEW MANHOLE COVER AND CASTING.



May 10, 2013 - 10:43am K:\cad\_and\_projects\private\3244\08\dwg\3244\08\GRADING.dwg

DATE	REVISION

I hereby certify that this plan, specification, or report was prepared by me or under my direct supervision and that I am a duly Licensed Professional Engineer under the laws of the State of Minnesota.

*Timothy A. Eggerichs*  
 TIMOTHY A. EGGERICHS, P.E.  
 Date 5/7/13 Lic. No. 43362

DESIGNED BY: TAE  
 DRAWN BY: TAE  
 CHECKED BY: CJJ



**Hakanson Anderson**  
 Civil Engineers and Land Surveyors  
 3601 Thurston Ave., Anoka, Minnesota 55303  
 763-427-5860 FAX 763-427-0520  
 www.hakanson-anderson.com

CULLINAN RIGGING BUILDING ADDITION

GRADING, DRAINAGE AND EROSION CONTROL PLAN  
 CITY OF RAMSEY, MINNESOTA

SHEET 4 OF 4 SHEETS