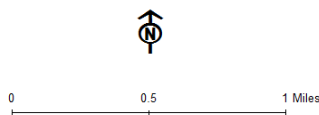
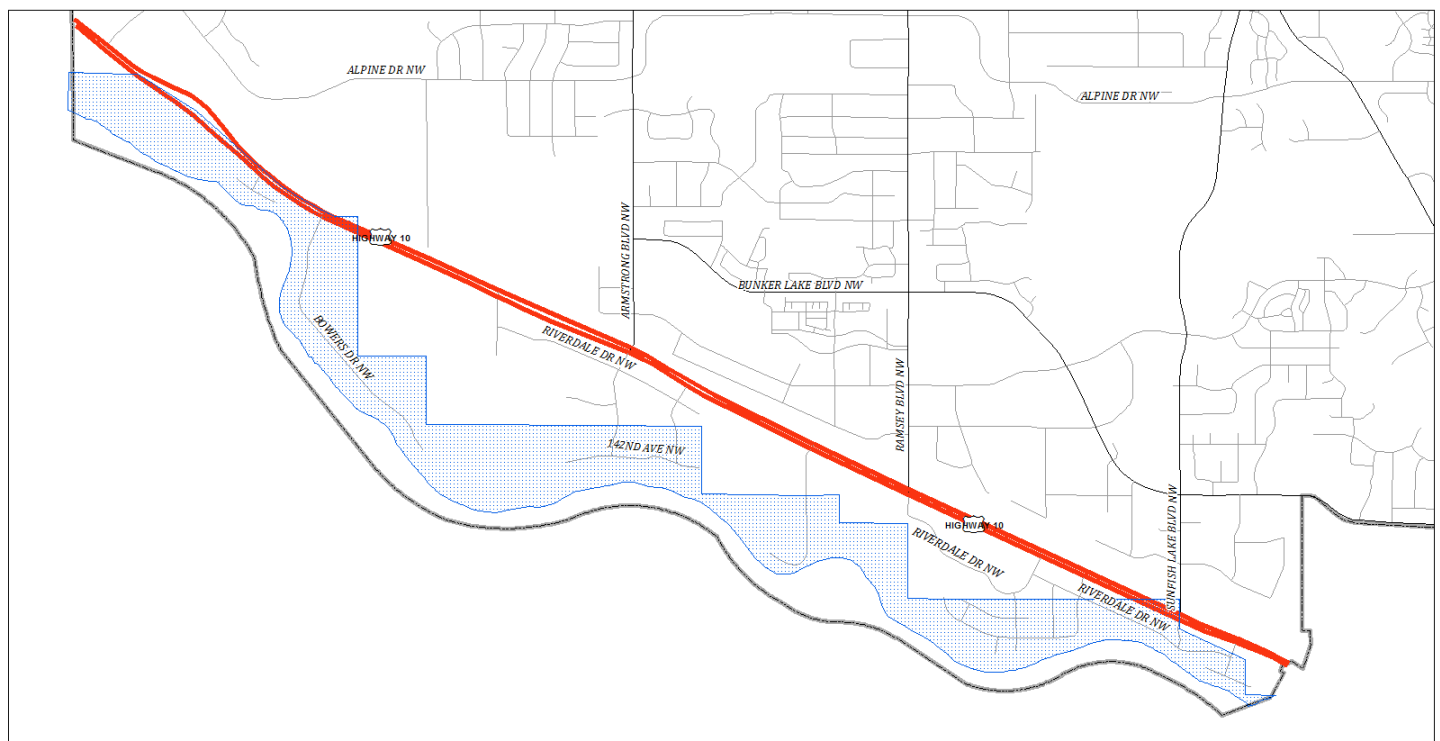




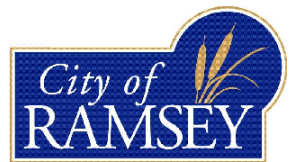
7550 Sunwood Drive NW • Ramsey, MN 55303
City Hall: 763-427-1410 • Fax: 763-427-5543
www.cityoframsey.com

Ramsey wants to invite you to participate in a public process to discuss appropriate standards and be part of the review for the Mississippi River Corridor Critical Area

The City of Ramsey is reaching out to you as a Property Owner near the Mississippi River that is located in the Mississippi River Corridor Critical Area (MRCCA/Critical Area). The Critical Area is a State of Minnesota designation that includes properties along the Mississippi River stretching from Ramsey to Hastings. The intent of this district is to protect key natural, economic, cultural, and ecological resources and protect the scenic quality of the river corridor. The map below indicates areas in Ramsey that are part of the Critical Area.



 Critical Area Boundary
 Ramsey Border



The City invites you to participate in being part of the process and reviewing alternatives (ranging from new and amended standards to no changes at all) related to an upcoming rulemaking project led by the Minnesota Department of Natural Resources (DNR).

Monday, September 16, 2013 at 6:00 p.m.
Ramsey Municipal Center, Alexander Ramsey Room
7550 Sunwood Drive NW, Ramsey, MN 55303

During the 2013 State of Minnesota Legislative Session, the Minnesota Legislature approved House File #1183 (Senate File #1051). This bill, also known as the Omnibus Legacy Bill, included direction for the DNR to update standards for the Critical Area. A similar

process was completed in 2009, however the process was not completed by the required deadline, and revised rules were not adopted. The Critical Area is an existing designation, and the City has previously adopted rules consistent with the existing Statute. This process will potentially update these existing rules.

In order for the Planning Commission, Environmental Policy Board (EPB), and City Council to make informed recommendations on potential draft rules, we first want to hear from you as Property Owners, those most impacted by potential changes to standards. You are an integral part of this process, and the City needs your feedback in order to make an informed decision. As the process has yet to formally begin, the City cannot fully analyze the potential impacts to our residents. However, the City desires to hear from you prior to the process beginning so that you can be part of the discussion, process, and ultimate outcome.

The City desires to hear your thoughts on:

- What key resources do you feel the City and State of Minnesota should protect through updated standards, if any?
- What types of standards (i.e. setbacks, limits on impervious [hard] surface, limits on vegetative removal) would you feel important for the City to protect through administration of additional land use controls, if any?
- What general questions or concerns regarding the Critical Area would you like the City to discuss with the DNR?

This initial public forum hosted by the City on September 16th will begin with a short background presentation at 6:00 p.m. followed by an open public forum and process.

The DNR will be meeting with City Staff and policy makers in late September. In order for this meeting to be productive, your participation in providing input is critical. In addition, the DNR will be hosting Open Houses on the process later this fall. The City Council has asked City Staff to reach out to impacted Property Owners prior to that stage to ensure that your feedback is incorporated into preliminary discussion and in preparation for the upcoming Open House sponsored by the DNR.

Please consider joining us on September 16, 2013 to be part of the discussion and solution. You may also submit comments to tgladhill@cityoframsey.com or by calling 763-576-4308. For more background information, visit our webpage at www.cityoframsey.com/shoreland under the 'Mississippi River Corridor Critical Area (MRCCA)' section.

Sincerely,

CITY OF RAMSEY



Tim Gladhill
Development Services Manager