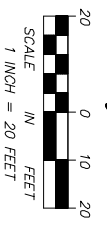
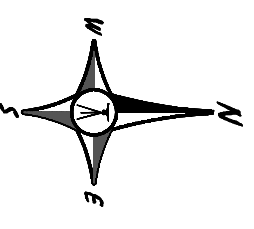
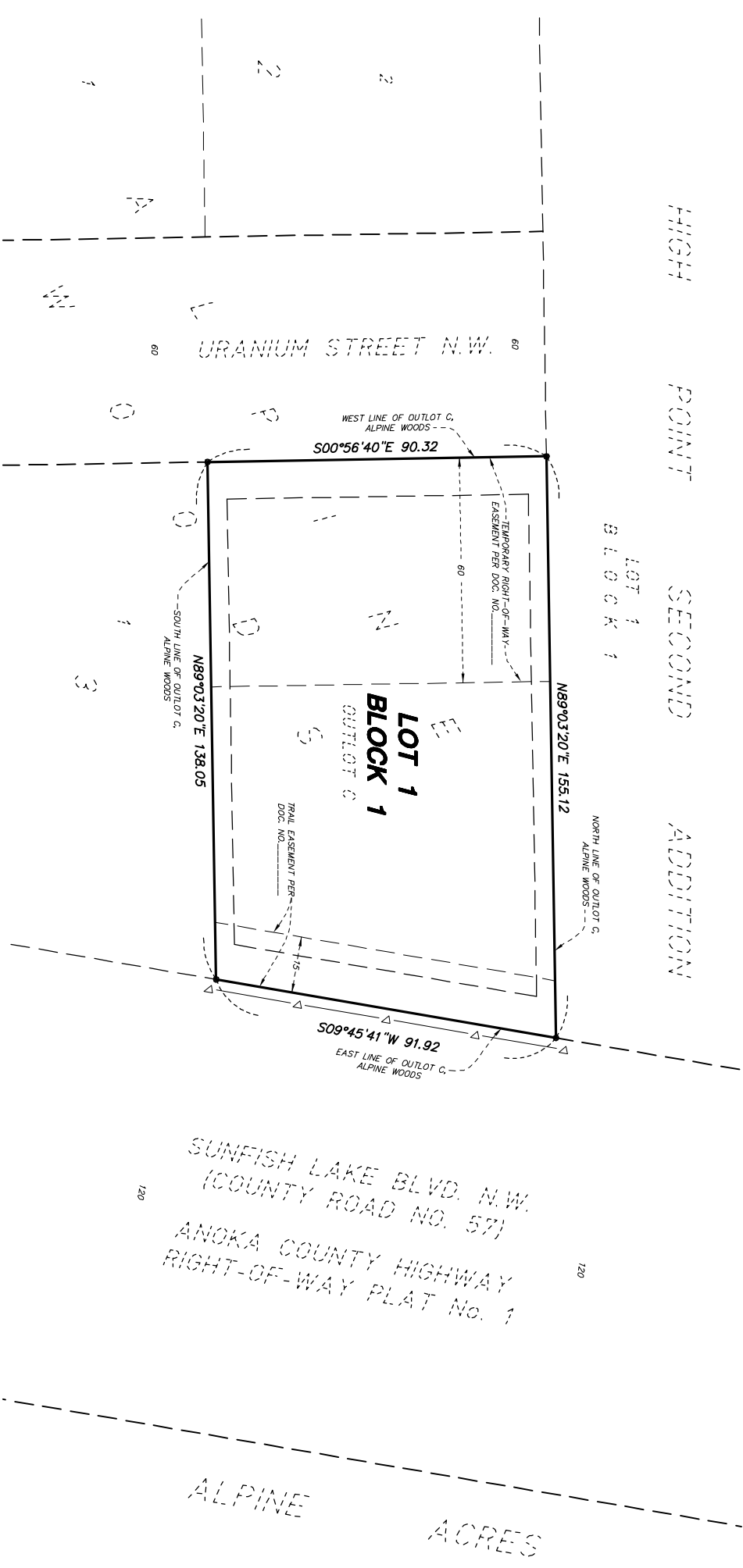


ALPINE WOODS THIRD ADDITION

CITY OF RAMSEY
COUNTY OF ANOKA
SEC. 23, T. 32, R. 25



DRAFT COPY
NOT OF RECORD



KNOW ALL PERSONS BY THESE PRESENTS, That Oakwood Land Development, Inc., a Minnesota corporation, owner of the following described property situated in the County of Anoka, State of Minnesota, to wit:

Outlot C, ALPINE WOODS, according to the recorded plat thereof, Anoka County, Minnesota.

Has caused the same to be surveyed and platted as ALPINE WOODS THIRD ADDITION and does hereby donate and dedicate to the public for public use forever the drainage and utility easements as shown on this plat. Also dedicating to the County of Anoka the right of access onto County Road No. 57 as shown on this plat.

In witness whereof said Oakwood Land Development, Inc., a Minnesota corporation, has caused these presents to be signed by its proper officer this _____ day of _____, 20____.

OAKWOOD LAND DEVELOPMENT, INC.

By: _____
John R. Peterson, President

State of Minnesota
County of _____

This instrument was acknowledged before me on _____ by John R. Peterson, as President of Oakwood Land Development, Inc., a Minnesota corporation, on behalf of the corporation.

Notary Public, _____ County, Minnesota
My commission expires _____

I, Kyle J. Roddy, do hereby certify that this plat was prepared by me or under my direct supervision; that I am a duly Licensed Land Surveyor in the State of Minnesota; that this plat is a correct representation of the boundary survey; that all mathematical data and labels are correctly designated on this plat; that all monuments depicted on this plat have been, or will be correctly set, within one year, that all water boundaries and wet lands, as defined in Minnesota Statutes, Section 505.01, Subd. 3, as of the date of this certificate are shown and labeled on this plat; and all public ways are shown and labeled on this plat.

Dated this _____ day of _____, 20____.

Kyle J. Roddy, Licensed Land Surveyor
Minnesota License Number 42627

State of Minnesota
County of _____

This instrument was acknowledged before me on _____ by Kyle J. Roddy

Notary Public, _____ County, Minnesota
My commission expires _____

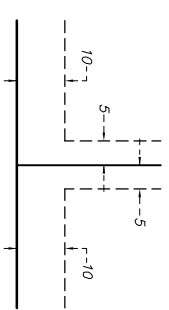
CITY COUNCIL
CITY OF RAMSEY, MINNESOTA
This plat of ALPINE WOODS THIRD ADDITION was approved and accepted by the City Council of the City of Ramsey, Minnesota at a regular meeting thereof held this _____ day of _____, 20____, and said plat is in compliance with the provisions of Minnesota Statutes, Section 505.03, Subd 2.

CITY COUNCIL
CITY OF RAMSEY, MINNESOTA
By: _____ Mayor By: _____ Clerk

ANOKA COUNTY SURVEYOR
I hereby certify that in accordance with Minnesota Statutes, Section 505.021, Subd. 11, this plat has been reviewed and approved this _____ day of _____, 20____.

Larry D. Holm, Anoka County Surveyor

DRAINAGE AND UTILITY EASEMENTS ARE SHOWN THUS:



BEING 5 FEET IN WIDTH AND ADJOINING SOLE LOT LINES AND BEING 10 FEET IN WIDTH AND ADJOINING PUBLIC WAYS AND REAR LOT LINES, UNLESS OTHERWISE INDICATED ON THIS PLAT.

BEARING NOTE

FOR THE PURPOSES OF THIS PLAT, THE NORTH LINE OF OUTLOT C, FROM ANOKA COUNTY, MINNESOTA IS ASSUMED TO HAVE A BEARING OF NORTH 89 DEGREES 03 MINUTES 20 SECONDS EAST.

LEGEND

• DENOTES 1/2 INCH IRON PIPE MONUMENT FOUND
—Δ—Δ— DENOTES RIGHT OF ACCESS DEDICATED TO ANOKA COUNTY

NOTE REGARDING WETLANDS

THE MINNESOTA DEPARTMENT OF NATURAL RESOURCES, UNITED STATES CORPS OF ENGINEERS AND OTHER WATER MANAGEMENT AGENCIES HAVE CONDUCTED SURVEYS OF WETLANDS IN ACCORDANCE WITH MINNESOTA CHAPTER 505.01, SUBDIVISION 3 OF MINNESOTA STATUTES AND MAY NOT BE SHOWN HEREON. DEVELOPMENT OF LANDS CONTAINING SAID WETLANDS MAY BE SUBJECT TO SPECIAL CONDITIONS OR LIMITATIONS.

