

Total Defense, Inc.

14031 St Francis Blvd. NW

Ramsey, MN 55303

(763) 432-6134

Bob's SuperValu Building Proposal

Square Footage Breakdown

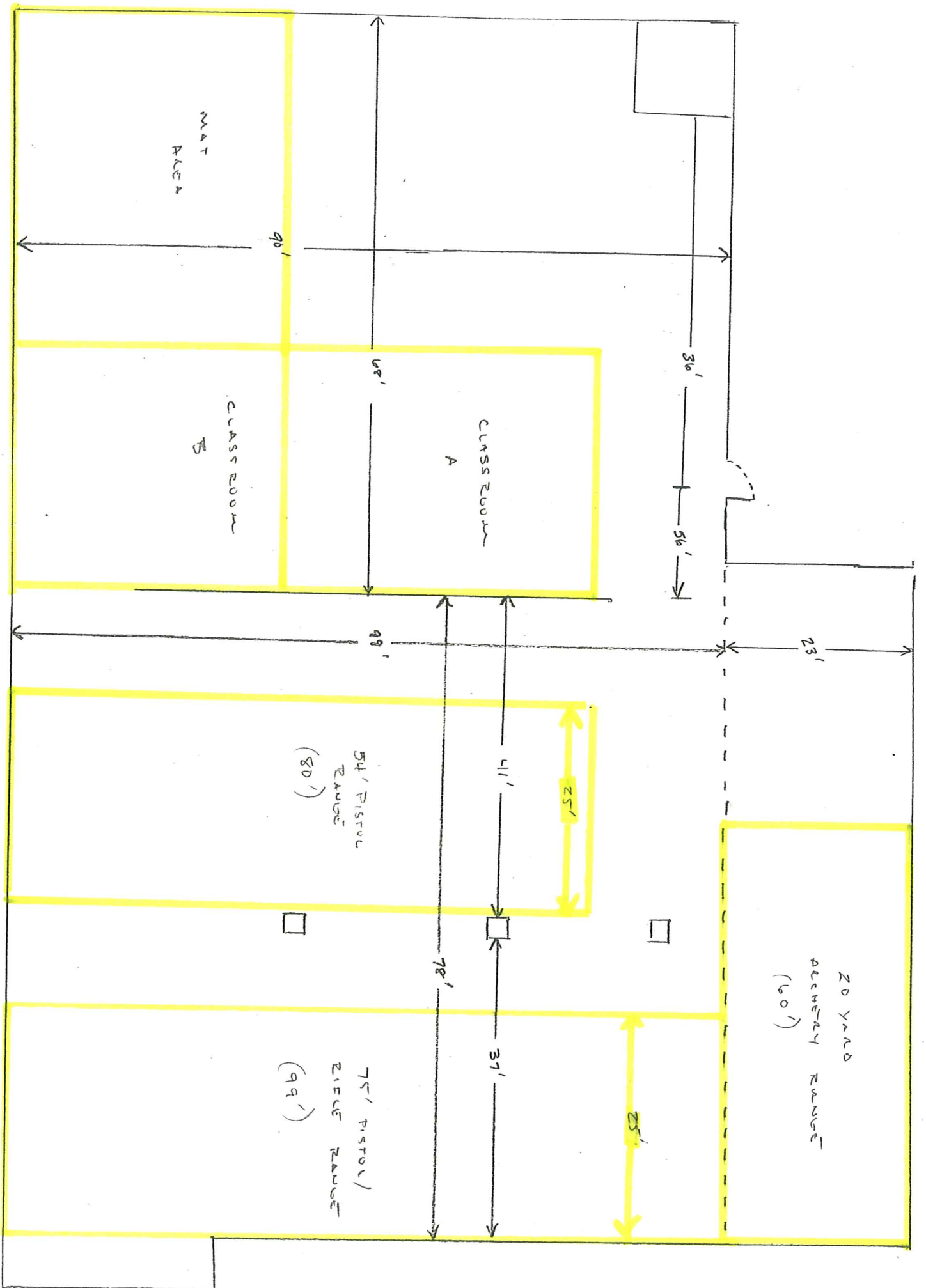
18,300 Total Square Feet

Retail Floor Space = 8000 - 9000 sq. ft.

Indoor Shooting Range = 4500 sq. ft.

Indoor Archery Range = 900 sq. ft.

Training Areas Combined = 3000 - 4000 sq. ft.





Service – Centered. Personal. Protection.

Total Defense offers a multi state concealed carry course for those interested in obtaining their MN permit to carry a concealed weapon. This course stresses the basics of personal defense with a firearm.

Our 4 Hour self defense training will teach you how to fight full-force against a padded mock attacker. As you learn in an adrenalized state, it creates “muscle memory” so your body will remember in a crisis situation. Other traditional self defense classes don’t offer this.

Total Defense can offer you all the latest firearms you’re looking for at a great price due to our low overhead. Once you’ve picked out that great new gun we can find you all the cool toys to go with it.

*Your one stop shop for
Emergency Preparedness / Bug-Out Bags (BOB),
and all essential gear to stock your BOB.

*Home/Disaster Preparedness Items

*Survival Guides

*Custom Knives

*Woolrich/Condor/5.11 Tactical Apparel

*Full line of holsters and leather goods

Our extremely knowledgeable and professional instructors will guide you in all your self defense needs.

***Conceal Carry Classes**

***Personal Self Defense Training**

***Buy/Sell/Trade/Consign New and Used Firearms**

***Exclusive Dealer in the Twin Cities area for various CCW / Self-Defense product lines.**

***Gunsmith / Dura-Coat Services**

***Women’s Self Defense**



Total Defense

Firearms, Gear and Training

14031 St. Francis Blvd. NW
Ramsey MN 55303

Phone: 763-432-6134

Website: mntotaldefense.com



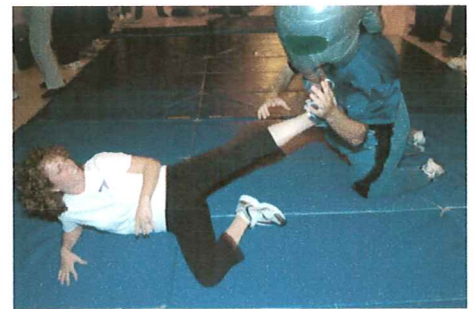
Service – Centered. Personal. Protection.

Self Defense Classes

Our 4 Hour self defense training will teach how to fight full-force against a padded mock attacker. As you learn in an adrenalized state, it creates “muscle memory” so your body will remember in a crisis situation. Other traditional self defense classes don’t offer this.

After our class, you will be able to defend yourself against verbal and physical assaults. Regardless of sex, age, size or physical strength you can learn to effectively defend yourself.

Come in and sign up for a class today, learn these skills in a safe and supportive environment with one of our highly trained instructors.



Total Defense
14031 St. Francis Blvd. NW
Ramsey MN 55303
Phone: 763-432-6134
Website:
www.mntotaldefense.com



Comprehensive training solutions when lives are on the line

[SHOOTING RANGES](#)
[TRAINING PRODUCTS](#)
[TRAINING SERVICES](#)

TRAINING PRODUCTS: QuickRange

QuickRange is the best live fire shooting solution for you.

For live fire training, acquisition of a new shooting range, or replacement of an existing range, QuickRange is the answer! QuickRange is a pre-engineered, modular live fire shooting range, complete with 2 shooting lanes, shooting stalls, target retrieval systems, bullet traps, lighting and HVAC. Each QuickRange module is 100% complete. All you need is a power supply and an installation pad!

Environmentally Friendly

OSHA, NIOSH and EPA regulations for safety, noise reduction and air-quality are not only met, but exceeded in every QuickRange delivered. The HVAC system maintains negative airflow pressure to ensure that lead, smoke and airborne particulate are moved downrange, away from the shooter. It then passes through a 95 - 99.97% HEPA filter rack before it's exhausted outside the range. Lead collection for recycling is as easy as changing collection containers. QuickRange is the environmentally safe solution for range users and the environment.



Safe

QuickRange has proven ballistic and sound dampening composites which carry an independent 3rd party certification for safety and effectiveness. We guarantee 100% containment of all properly fired rounds due to our patented layered ballistic lining. With QuickRange, you are assured a Zero SDZ (Surface Danger Zone) so placement of the range can be accomplished nearly anywhere, creating a safe shooting environment.

Convenient

With the ability to install a QuickRange almost anywhere, with little site preparation, you can train right in your own backyard. Relying on inconvenient range locations, restricted times of operation or weather, are no longer obstacles in your training. QuickRange is the unlimited, [anytime](#), all-weather solution.

Expandable

QuickRange exceeds today's qualification and tactical training requirements, regardless of your agency's size. The pre-engineered modular design allows expansion from 40 to 200-feet in length, and 2 to 24 or more shooting positions wide. QuickRange can be customized and configured to grow with your budget and training needs.

Affordable

Our lease program makes QuickRange affordable. Available for federal, state and local law enforcement agencies, it allows funding to be spread out over multiple years. Now you can have the range you want, right now!

PRISim Suite® LiveFire Trainer™

Installed within QuickRange, the PRISim Suite LiveFire Trainer allows the utilization of all PRISim Suite software in a live fire shooting range. PRISim Suite LiveFire Trainer provides the ideal environment for marksmanship, tactical decision-making and qualification training.

[More>>](#)

Training Products

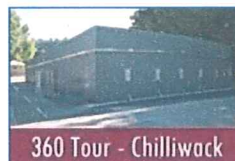
PRISim Suite®
SVS®
QuickRange
M-SATS™

Shooting Ranges

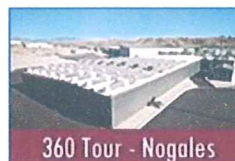
Alpha Range™
Bullet Traps
Shooting Stalls
Target Retrieval Systems
HVAC
Building Design/Blue Prints
Ceiling Guards
Metal Fabrication



QuickRange Video
Overview



360 Tour - Chilliwack



360 Tour - Nogales



360 Tour - NSWDC





Comprehensive training solutions when lives are on the line

[SHOOTING RANGES](#)
[TRAINING PRODUCTS](#)
[TRAINING SERVICES](#)

SHOOTING RANGES: Alpha Range™



Reduce time lines and save cost with the AIS Alpha Range™

- Modular
- Flexible
- Scalable
- Versatile
- Affordable
- Ease of Installation
- Ease of Acquisition
- 100% bullet containment
- Environmentally-friendly solution
- Climate controlled
- Patented integration and assembly process



Alpha Range™ being installed on-site

Shooting Ranges

QuickRange®
 Alpha Range™
 Bullet Traps
 Shooting Stalls
 Target Retrieval Systems
 HVAC
 Building Design/Blue Prints
 Ceiling Guards
 Metal Fabrication



Alpha Range™ Features

Equipped with or without shooting stalls/booths for safety and organization of the firing line, with a fold down shooting tray allowing for shooter movement down range if desired.

Complete self-contained range with negative HVAC system pressure to ensure that no lead, smoke or air born particles get back to the shooter or exit the facility. All air moves the full length of the AR and is exhausted in front of the bullet traps through the ceiling. The air passes through a HEPA filter rack and then an exhaust fan. All air is exhausted out side the AR after being filtered through a 99.9% HEPA filter.

Meets all Commercial and Military Range Safety Criteria:

- National Shooting Sport Foundation, Inc. "Lead Management OSHA Compliance for Indoor Shooting Ranges" CFR 29 1910.1025
- Immigration and naturalization Dept. Division of the Dept, of Justice - INS/NFU Firing Range Design Standard
- EPA
- UFC (Unified Facilities Criteria) – US Navy NEHC-TM6290-99-10
- US NIOSH "Lead Exposure and Design Considerations for Indoor Firing Range, 1975."

Exterior vertical surfaces treated with KYNAR 500 providing a 20 year limited warranty.

AR is SimReady, allowing for easy installation of a judgmental use-of-force or marksmanship simulator at a later date.

All walls, floors and ceilings in each AR are AR500 steel-lined for rifle rating to handle munitions up to and including 3300 fps or 3600 ft.lbs. of kinetic energy (up to 7.62mm with and optional 50 Cal. capability).

Ceiling plates are configured to protect down range lights from direct bullet contact from the firing line.

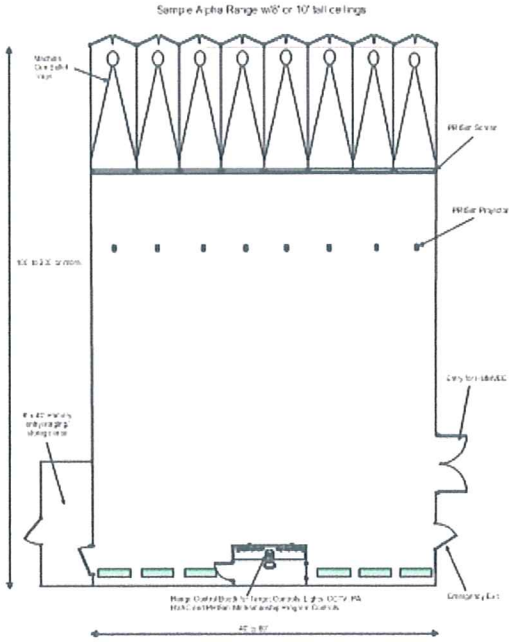
All AR's have complete lighting systems, including an outside electrical main panel and

interior sub panel, and all electrical disconnects and breakers.

All lights, target systems, accessories and HVAC system can be controlled.

Each AR comes with an appropriately rated bullet trap for the type and size of the ammunition required.

Our patented bullet trap design allows for easy collection at the rear of each module via rear access doors. The collection helical at the rear of trap will decelerate the bullet until it has lost its velocity and fall out the bottom of a funnel into a typical 5 gallon bucket. The bullet and spent lead content can be removed without coming in contact the hazardous material and then easily sealed. The Bullet Trap helical will also have a 6" exhaust port putting the trap itself under negative pressure to pull any air born particles up into the HEPA filtration system.



[Job Opportunities](#) [Legal Notices](#) [Procurement](#) [Site Map](#) [Home](#)

Copyright © Advanced Interactive Systems, Inc. 800.441.4487



Comprehensive training solutions when lives are on the line

[SHOOTING RANGES](#)
[TRAINING PRODUCTS](#)
[TRAINING SERVICES](#)

SHOOTING RANGES: Bullet Traps



SRI's vertical chamber completely traps the bullet when entering the helical forcing bullet velocity reduction. Bullets and ammunition fragments fall harmlessly through a funnel into the bullet storage container, thus eliminating tedious lead collection.

Passive in construction, there is no need for separating bullets and ammunition fragments from other materials such as rubber, water or sand. Lead collection for recycling is as easy as changing collection containers.

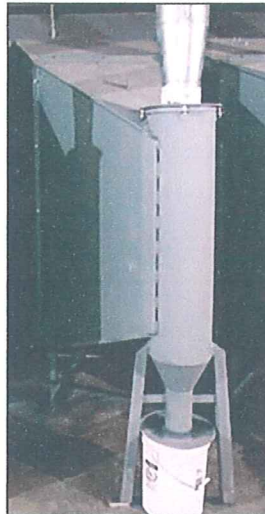
- Each trap is free standing and modular in design
- Provides superior bullet containment
- [Direct air filtration](#) exhaust hook-up
- All materials are angle designed for minimum wear
- [Low](#) installation and maintenance costs

As a bullet is fired downrange it is deflected by hardened steel panels and guided into the helical. Once the bullet has entered the helical, bullet velocity dissipates as the bullet spirals along the chamber walls until it harmlessly drops into a bullet storage container.

The SRI trap system has no moving components, which greatly reduces downtime and maintenance costs. The SRI system has eliminated the need to use sand, water or rubber materials and therefore, eliminates the tedious separation of lead from other materials and minimizes lead exposure.

EPA regulations for air filtration are addressed with this system. A direct air exhaust hook-up is offered with each trap. Thus, all airborne particles in the trap are exhausted to and collected in the air filtration system. These features minimize employees' exposure to lead contamination.

Each SRI bullet trap is free standing and modular in design. The main body of the trap is a solid welded unit and will fit through a standard 3'0" door. Assembly of extension plates occurs in the final stage of fabrication at the installation site. This will bring the trap to its full height and width.



Rearview of a P393 Bullet Trap

Shooting Ranges

QuickRange®
Alpha Range™
Bullet Traps
Shooting Stalls
Target Retrieval Systems
HVAC
Building Design/Blue Prints
Ceiling Guards
Metal Fabrication



Trap Dimensions

Length: 7'
Height: 7' 6" (At front)
Width: 42"
Weight: P393 - 1505 lbs.
P493 - 1860 lbs.

[Job Opportunities](#) [Legal Notices](#) [Procurement](#) [Site Map](#) [Home](#)

Copyright © Advanced Interactive Systems, Inc. 800.441.4487



Comprehensive training solutions when lives are on the line

SHOOTING RANGES

TRAINING PRODUCTS

TRAINING SERVICES

SHOOTING RANGES: Shooting Stalls



The principal element in the design and construction of every SRI product is shooting safety. Multifaceted space management engineering permits enough room for an instructor and student to shoot while keeping the focus downrange and maintaining the maximum safeguards. The innovative design of SRI stalls maximizes the number of lanes an area can facilitate, while dimension design lends to better shooter orientation, comfort and protection. The fabrication of SRI shooting stalls consist of double steel jacketed walls, sportcourt carpeting trimmed with high-tech, durable stainless steel.



SRI stalls offer full shooter protection and fold-down shooting tray

Functionality

SRI has designed a large, flat fold-down shooting tray. This practical design allows ample room for firearms and ammunition reload. Individual target, retrieval motor controls and sight lights are located in each stall. A recessed stainless steel tray and target retrieval is at the shooter's fingertips. For training purposes, SRI offers an optional vertical swing-out barricade.

Durability

Standard shooting stalls are often constructed from wood or plastic and are not able to endure the wear and tear of frequent use and ejected brass. SRI stall walls are a steel jacket covered with a high grade sport-court carpeting. This material is durable and easy to clean. All exposed edges are covered with a durable stainless steel trim. SRI stalls have years of durability, are easy to maintain and operate and give your facility a quality, high-tech look.

Stall Dimensions

Taller than most, this height minimizes ejected brass from traveling over the top of the stall, distracting neighboring shooters. Extra width reduces surrounding muzzle blast noise. And the a wider width comfortably places the shooter's focus downrange.

Dimensions

Height: 84"
Width: 53" (base width)
Spacing: 42" (on center)

Stall Protection

Maximum height and width is utilized for shooter protection. An inner steel jacket construction, filled with pea gravel, will stop and trap the point blank shot of a 44 magnum. The combination of stall dimensions and fully lined sport-court carpeting greatly reduces surrounding muzzle blast noise. The shooter is shielded from the distractions of neighboring shooters.

Shooting Stall Placement:

From the firing line to the wall behind the shooters we recommend a minimum of 10 feet.

Stall Walls

Along Top: 47"
Along Bottom: 53"

Shooting Ranges

QuickRange®
 Alpha Range™
 Bullet Traps
 Shooting Stalls
 Target Retrieval Systems
 HVAC
 Building Design/Blue Prints
 Ceiling Guards
 Metal Fabrication





Comprehensive training solutions when lives are on the line

[SHOOTING RANGES](#)
[TRAINING PRODUCTS](#)
[TRAINING SERVICES](#)

SHOOTING RANGES: Target Retrieval Systems



The keystone of the SRI Target Retrieval System is the simple design of durable materials.

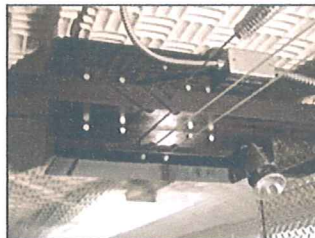
The motor retrieval system is controlled by each shooter, allowing independent operation of target distance.

The metal facings on retrieval systems take on a great deal of abuse in the line of fire. Special attention has been attributed to all metal facings which are fabricated from hardened steel and cut at less than the standard 45 degree angle iron.

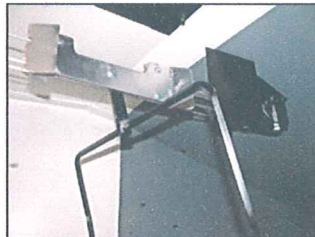
The entire system is designed and fabricated to ensure durable and continuous operation.

All retrieval systems come complete with:

- Motor control boxes
- Retrieval ends
- Target cars
- Target hangers
- **Stainless steel cable**
- Stainless steel drive cord
- Pre-constructed wiring harnesses/switches



Motor control box



Target car and hanger

Shooting Ranges

QuickRange®
 Alpha Range™
 Bullet Traps
 Shooting Stalls
 Target Retrieval Systems
 HVAC
 Building Design/Blue Prints
 Ceiling Guards
 Metal Fabrication





Comprehensive training solutions when lives are on the line

[SHOOTING RANGES](#)
[TRAINING PRODUCTS](#)
[TRAINING SERVICES](#)

SHOOTING RANGES: HVAC



Shooting range air quality is a major concern when it comes to constructing an indoor range. SRI can meet all of your design needs for a full heating, ventilation and air conditioning (HVAC) system.

SRI can provide you with a complete CAD design of the recommended **air conditioning and heating** equipment selections, exhaust fans, blowers, filter racks and filters. Full duct work designs, duct sizing, dampers and **register**

selections are specified as well. Not only is our guaranteed design no additional cost to you, but final systems cost will be a fraction of the cost of other systems. SRI is your one-stop service for complete range and HVAC designs and products.



HEPA Filters



Roof Mounted HVAC and Exhaust System

Shooting Ranges

- QuickRange®
- Alpha Range™
- Bullet Traps
- Shooting Stalls
- Target Retrieval Systems
- HVAC
- Building Design/Blue Prints
- Ceiling Guards
- Metal Fabrication



[Job Opportunities](#) [Legal Notices](#) [Procurement](#) [Site Map](#) [Home](#)

Copyright © Advanced Interactive Systems, Inc. 800.441.4487



Comprehensive training solutions when lives are on the line

SHOOTING RANGES

TRAINING PRODUCTS

TRAINING SERVICES

SHOOTING RANGES: Building Design/Blue Prints



For more information about custom building design and blue prints, please [contact us](#).



Building Design and Blue Printing

Shooting Ranges

- QuickRange®
- Alpha Range™
- Bullet Traps
- Shooting Stalls
- Target Retrieval Systems
- HVAC
- Building Design/Blue Prints**
- Ceiling Guards
- Metal Fabrication





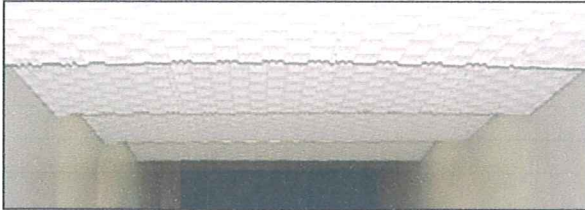
Comprehensive training solutions when lives are on the line

[SHOOTING RANGES](#)
[TRAINING PRODUCTS](#)
[TRAINING SERVICES](#)

SHOOTING RANGES: Ceiling Guards



SRI safety Ceiling Guards are pre-fabricated with pre-punched and welded suspension brackets. CAD-designed plate spacing ensures that projectiles are directed downrange, protecting lighting and HVAC fixtures. Each SRI ceiling plate system is designed and fabricated with slip, adjustable guards to fit the building width requirements. Suspension chain and hardware is included for a fast and simple installation.



Ceiling Guards

Shooting Ranges

- QuickRange®
- Alpha Range™
- Bullet Traps
- Shooting Stalls
- Target Retrieval Systems
- HVAC
- Building Design/Blue Prints
- Ceiling Guards**
- Metal Fabrication





Comprehensive training solutions when lives are on the line

SHOOTING RANGES

TRAINING PRODUCTS

TRAINING SERVICES



SHOOTING RANGES: Metal Fabrication & Design



SHOOTING RANGES
INTERNATIONAL
A Division of Advanced Interactive Systems™, Inc.

Metal Fabrication and materials are of great importance to the success of your range equipment.

With over 40 years experience in the metal fabrication field, all of SRI's metal fabrication is produced in-house. This flexibility allows us to keep track of quality control and fabrication schedules. All range components are designed and engineered with specialty metals and techniques to meet the toughest standards for range equipment durability and value.

Design of your range layout and equipment size is all completed on our in-house CAD system. Exact building measurements and fabrication is created to your specifications to ensure a proper and timely field installation. SRI has full press break and metal forming capabilities to fabricate a R493 Helical.

Shooting Ranges

- QuickRange®
- Alpha Range™
- Bullet Traps
- Shooting Stalls
- Target Retrieval Systems
- HVAC
- Building Design/Blue Prints
- Ceiling Guards
- Metal Fabrication**



Our in-house fully CAD operated dual table plazma cutting system