

Councilmember introduced the following resolution and moved for its adoption:

RESOLUTION #15-01-014

A RESOLUTION APPROVING THE ISSUANCE OF A CONDITIONAL USE PERMIT APPROVING THE OVERALL SIGN PLAN FOR CASEY’S GENERAL STORE.

WHEREAS, Casey’s Retail Company properly applied for a conditional use permit to exceed the minimum permanent sign size allowed for administrative approval on the property generally known as 7222 Sunwood Dr and legally described as follows:

Outlot GG Ramsey Town Center Addition, except that portion of said outlot described as follows: Beginning at the Northwest Corner of said Outlot, thence south along westerly line of said outlot 567.55 feet to a point of curvature in said westerly line, thence southerly 36.04 feet along said westerly line along a tangent curve concaved to west radius 540 feet and center angle 03 degrees 49 minutes 27 seconds to a point of tangency in said westerly line, thence south 03 degrees 49 minutes 27 seconds west along said westerly line 87.95 feet to most southerly corner in said westerly line, thence south 66 degrees 10 minutes 33 seconds east along southwesterly line of said outlot 659.59 feet, thence north 957.75 feet to northerly line of said Outlot, thence west along said northerly line 596.32 feet to point of beginning, Anoka County, MN, subject to easement of record.

(“Subject Property”)

WHEREAS, the Planning Commission met on January 8, 2015, conducted a public hearing, and recommended City Council approval of the request.

NOW THEREFORE, BE IT RESOLVED BY THIS CITY COUNCIL OF THE CITY OF RAMSEY, ANOKA COUNTY, STATE OF MINNESOTA, as follows:

1. Based on Findings of Fact #0939, a conditional use permit (“Permit”) to approve the overall sign plan for Casey’s General Store is hereby granted to Casey’s Retail Company (“Permittee”).
2. The **PERMITTEE** is herein granted permission to erect signs as indicated on Exhibit A, attached hereto on Subject Property.
3. That the **PERMITTEE** shall be responsible for all City costs incurred in administering and enforcing this Permit.
4. That the City Administrator, or his/her designee, shall have the right to inspect the premises for compliance and safety purposes annually or at any time, upon reasonable request.
5. That if any provision of this **Permit** shall be declared void or unenforceable, the other provisions shall not be affected but shall remain in full force and effect.

6. That this Permit shall not be considered modified, altered, changed or amended in any respect unless in writing and signed by the **CITY** and the **PERMITTEE**.
7. That if the **PERMITTEE** or its successors or assigns violates any material term or condition of this Permit it is grounds for suspension or revocation hereof consistent with applicable law, if the City Council reasonably determines that continued operation of the facility places the public health, safety or welfare or the environment in jeopardy or creates a public nuisance due to odors, litter, debris or other nuisance factors.

The motion for the adoption of the foregoing resolution was duly seconded by Councilmember, and upon vote being taken thereon, the following voted in favor thereof:

and the following voted against the same:

and the following abstained:

and the following were absent:

whereupon said resolution was declared duly passed and adopted by the Ramsey City Council this the 27th day of January, 2015.

Ramsey, MN

CASEY'S GENERAL STORE SIGN PACKET

Sign no. 9 4/10

SUNSHINE
ELECTRONIC DISPLAY CORPORATION

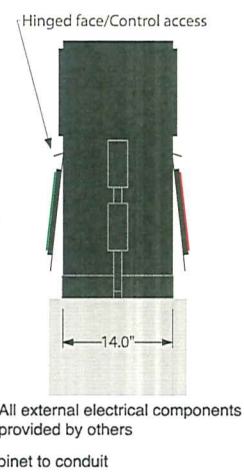
316 S. 6th ST. • SAINT JOSEPH, MISSOURI 64501
800-821-9013 • (F) 816-232-5915 • SUNSHINE.US.COM

CLIENT: Casey's		SALES REP: John Waller	
CLIENT CONTACT INFO:	SHIP TO LOCATION:	INSTALL LOCATION:	
CUSTOMER APPROVAL:		DATE:	

JOB #:	
DATE: Sept 11, 2013	
REVISIONS:	DATE:



- DIESEL on the right both sides
- Static DIESEL label provided by Sunshine
- Yellow labels with zip track provided by Sunshine
- Casey's to provide grade labels
- Pricer portion - 21 sq ft



CABINET & DIGIT SPECS:	
Digit Size & Style:	10" LED
Digit Color:	Red & Green
Overall Cabinet Size:	2'9"h x 7'7.5"w x 14"d
Cabinet Color:	Black

LABEL SPECS:	
LED Backlit Label Panel -	
Label Cap Height & Style:	6" Med. Helvetica
Label Panel Color:	3M 3630-015 Yellow
'DIESEL' Label Panel Color:	3M 3630-26 Green
'DIESEL' Label Type Color:	White

- OTHER:**
- Warranty: 2 year on-site parts/labor if Sunshine tech or approved install; otherwise 2 year parts only
 - Control: Wireless Keypad (300ft range)
 - Constant Hot AC Power must be provided by 'others'
 - Crane truck/crew must be provided by 'others'

This original drawing is provided as part of a planned project and is not to be exhibited, copied or reproduced without the written permission of Sunshine Electronic Display Corporation or its authorized agent. All installation details are suggested only. All signs must be installed in accordance with NATIONAL, STATE, ELECTRICAL AND BUILDING CODES. Sunshine Electronic Display Corporation has no responsibility for wind loads, installations or electrical circuits. These are the sole responsibility of the Buyer/user.

* Actual LED size and configuration may vary

UL LISTED
102482
UL File Number: E340294
CCN: UXYT

ETL LISTED
CONFORMS TO
UL STD 48
UL STD 1433
CERTIFIED TO
CAN/CSA STD C22.2 NO. 207

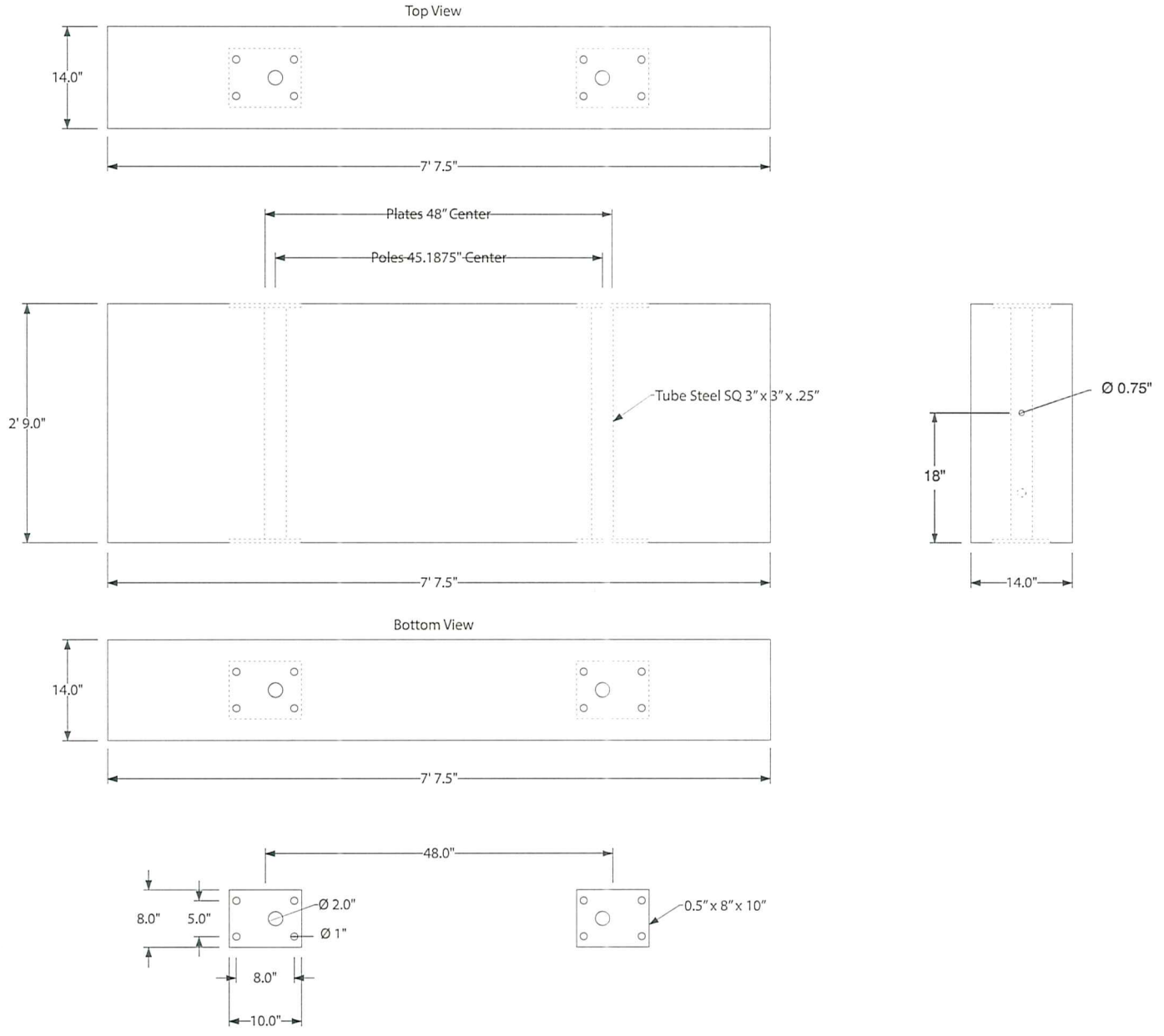
VER 3.15.12

Sign no. 9410



CLIENT: Casey's

316 S. 6TH ST. • SAINT JOSEPH, MISSOURI 64501
816-232-4224 • 800-821-9013 • (F) 816-232-5915
SUNSHINE.US.COM

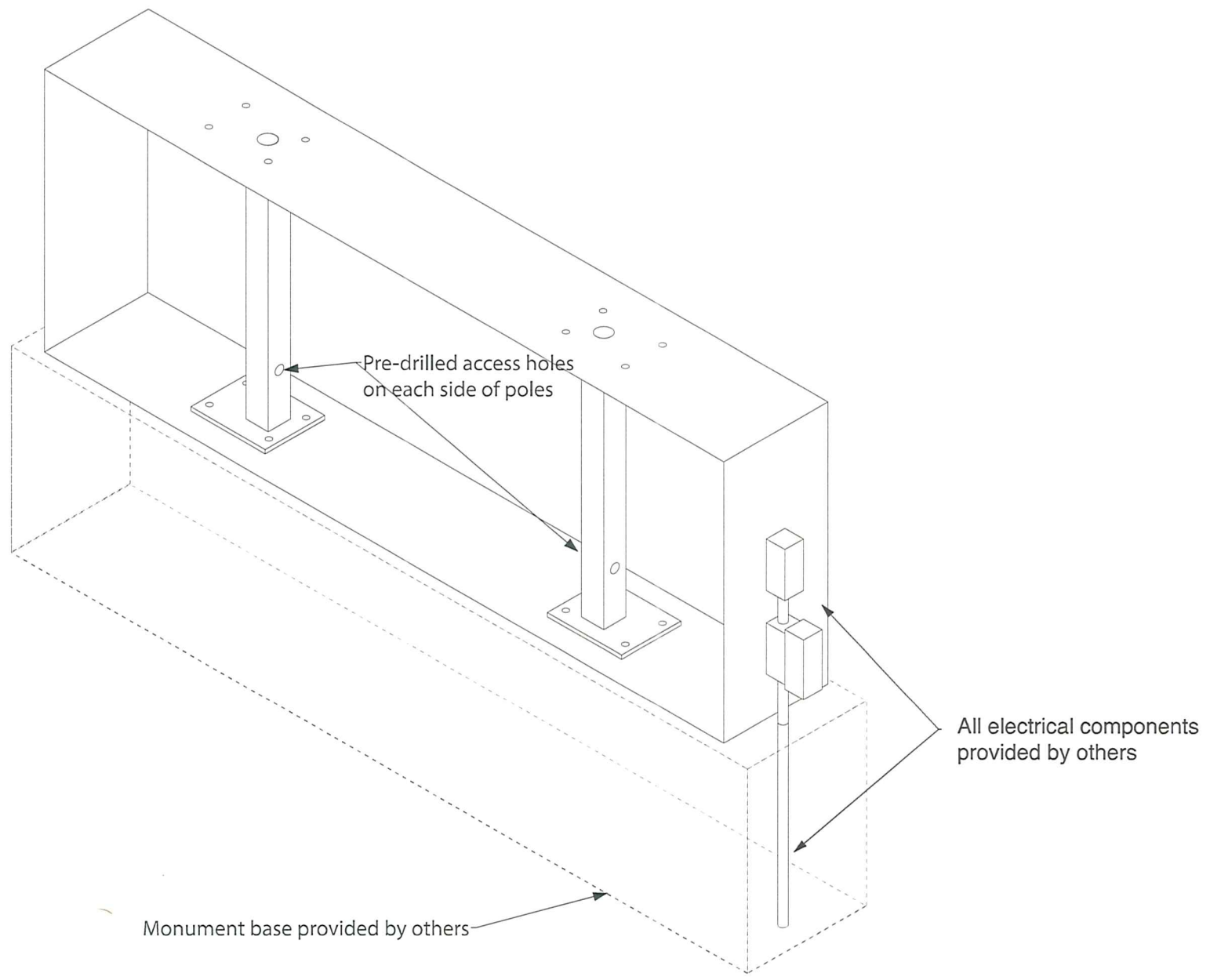


sign no. 9410

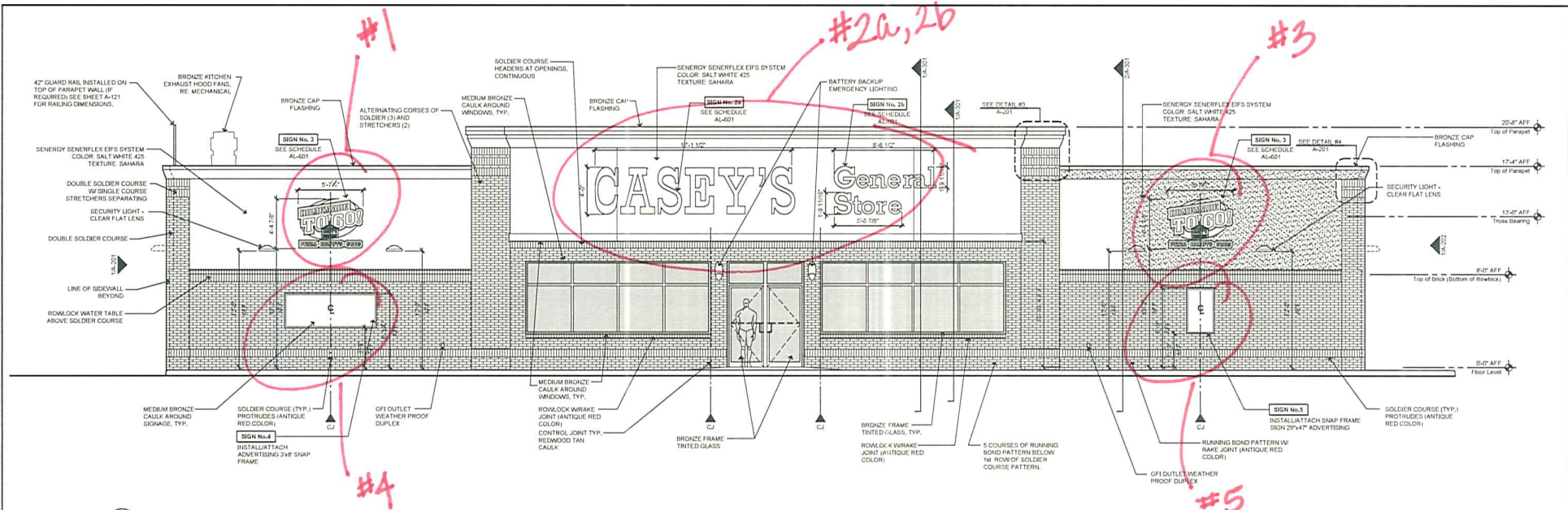


CLIENT: Casey's

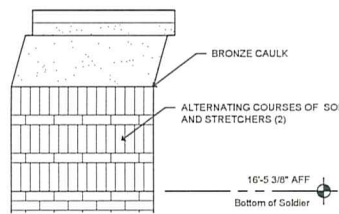
316 S. 6TH ST. • SAINT JOSEPH, MISSOURI 64501
816-232-4224 • 800-821-9013 • (F) 816-232-5915
SUNSHINE.US.COM



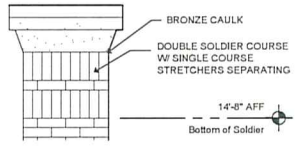
Project Signage Schedule Proposed Casey's General Store, Inc Corporate Signage package									
Sign No.	Sign	Sign Type	Mounting	Illumination	Dimensions				
					Bottom Of Sign	Top Of Sign	Width	Height	Area (SF)
Building and Canopy Wall Sign(s)									
1.	Casey's Standard Sign (Oval Sign)	Surface	Bldg. Front	Internally Illuminated	See A-201	See A-201	5'-7 1/2"	4'-3 5/16"	24.05 sf
2a.	Channel Letters "Casey's"	Surface	Bldg. Front	Internally Illuminated	See A-201	See A-201	17'-4"	4'-0"	68.10 sf
2b.	Channel Letters "General Store"	Surface	Bldg. Front	Internally Illuminated	See A-201	See A-201	8'-9 7/8"	4'-0"	33.08 sf
3.	Casey's Standard Sign (Oval Sign)	Surface	Bldg. Front	Internally Illuminated	See A-201	See A-201	5'-7 1/2"	4'-3 5/16"	24.05 sf
4.	Casey's Standard (Banner Advertising)	Snap Frame	Bldg. Front	Non Illuminated	See A-201	See A-201	8'-0"	3'-0"	24.00 sf
5.	Casey's Standard (General Advertising)	Snap Frame	Bldg. Front	Non Illuminated	See A-201	See A-201	2'-5"	3'-10"	8.63 sf
6a.	Casey's Standard (Corporate Logo)	Surface	a. Canopy (side)	Internally Illuminated	See A-201	See A-201	5'-8 7/8 " each	4'-0" each	17.485 sf
6b.	b. Canopy (side)		17.485 sf						
6c.	c. Canopy (front)		17.485 sf						
7.	LEFT BLANK INTENTIONALLY								
8.	Casey's Standard (General Advertising)	Snap Frame	Canopy Columns	Non Illuminated	See A-201	See A-201	2'-5"	3'-10"	8.63 sf X 4 = 34.52 sf
Total Signage Copy Area Provided									268.885 sf
Monument Sign									
9.	Casey's Standard (Monument Sign)	Monument	Freestanding	Internally Illuminated	2'-0"	10'-6"	7'-7 1/2"	8'-6"	54.00 sf
10.	Casey's Standard (Monument Sign)	Monument	Freestanding	Internally Illuminated	5'-0"	13'-6"	7'-7 1/2"	8'-6"	54.00 sf
Total Signage Copy Area Provided									108.00 sf



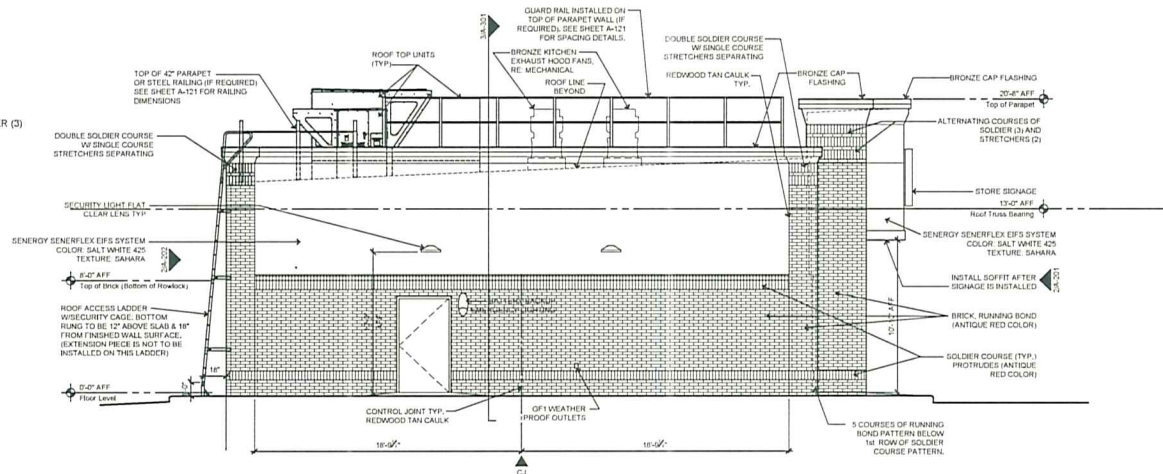
2 Front Elevation
1/4" = 1'-0"



3 Front Wall Column Detail (Typ.)
NTB



4 End Wall Column Detail (Typ.)
NTB



1 Left Side of Building
1/4" = 1'-0"

General Notes

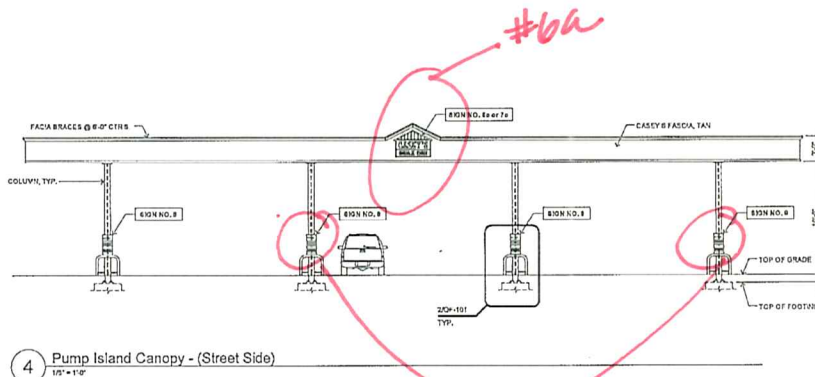
- REFER TO A-601 FOR STORAGE SCHEDULE INCLUDING SIZE AND AREA OF STORAGE SHOWN ON ELEVATION.

 CASEY'S CONSTRUCTION DIVISION <small>One Commonwealth Blvd., P.O. Box 3031, Adams, MA 02021 515-865-6100</small>		02-08-13 <small>DATE</small>	EXTERIOR ELEVATIONS
10\"/> 			
<small>CONSTRUCTION DIVISION</small> JACOB CLARK			A-201

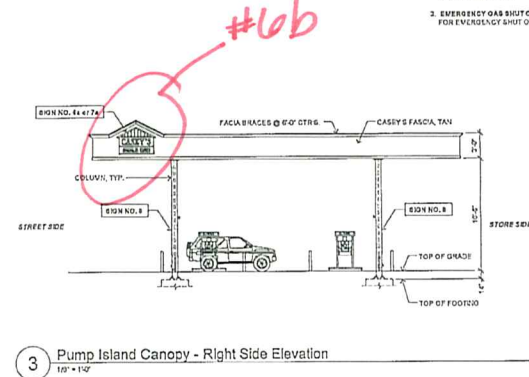
****VERIFY ALL SIGNAGE WITH SIGN PERMITS & CANOPY****

General Notes

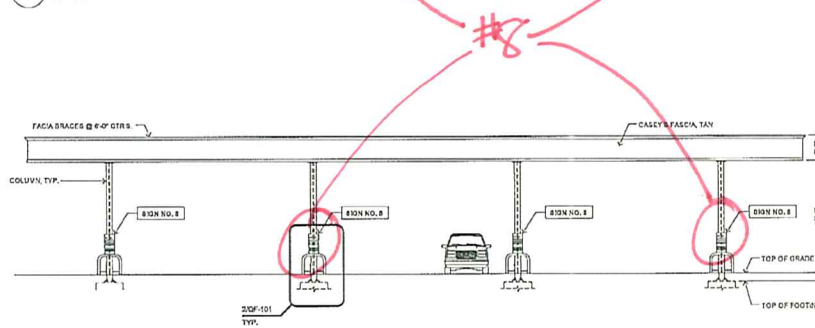
1. RELATED SHEETS: FOR ADDITIONAL INFORMATION NOT DETAILY REFERENCED, SEE THE FOLLOWING SHEETS:
 0-001 FOR GENERAL PROJECT NOTES
 AL-101 FOR GENERAL SITE PLAN
 AL-601 FOR SIGNAGE TECHNIQUE AND NOTES
 07-24-49 FOR DESIGN AND DETAILS RELATED TO FUTURE FACILITY
2. GASOLINE ISLAND CANOPY: RELEVANT SHOP DRAWINGS PROVIDED BY CANOPY SUPPLIER AND ADVISE CASEY'S CONSTRUCTION MANAGER OF ANY DISCREPANCIES.
3. EMERGENCY OAS SHUT-OFFS: REFER TO SHEETS A-201, A3-101 & E-101 FOR EMERGENCY SHUT OFF LOCATIONS.



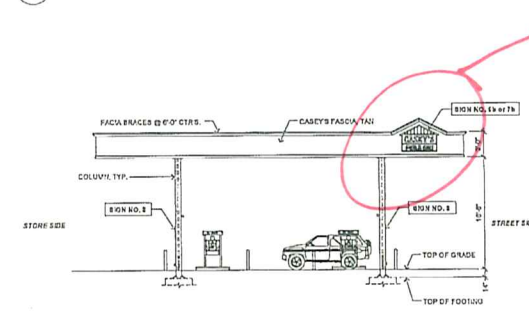
4 Pump Island Canopy - (Street Side)
1/8" = 1'-0"



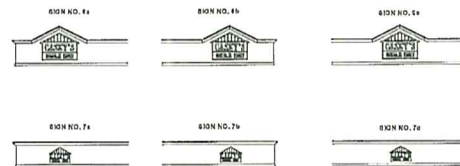
3 Pump Island Canopy - Right Side Elevation
1/8" = 1'-0"



2 Pump Island Canopy - (Store Side)
1/8" = 1'-0"



1 Pump Island Canopy - Left Side Elevation
1/8" = 1'-0"



5 Canopy Fascia Signage
1/8" = 1'-0"

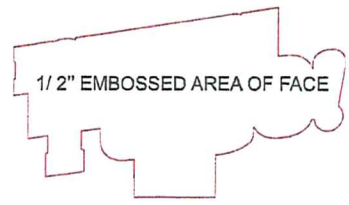
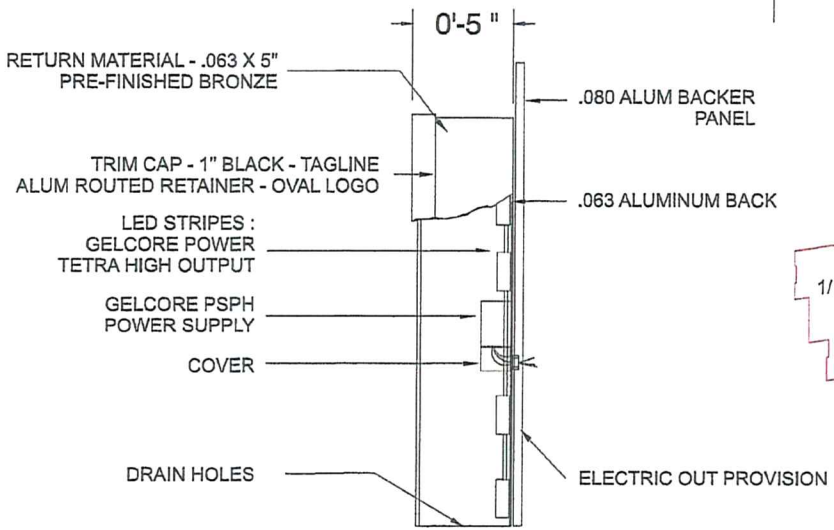
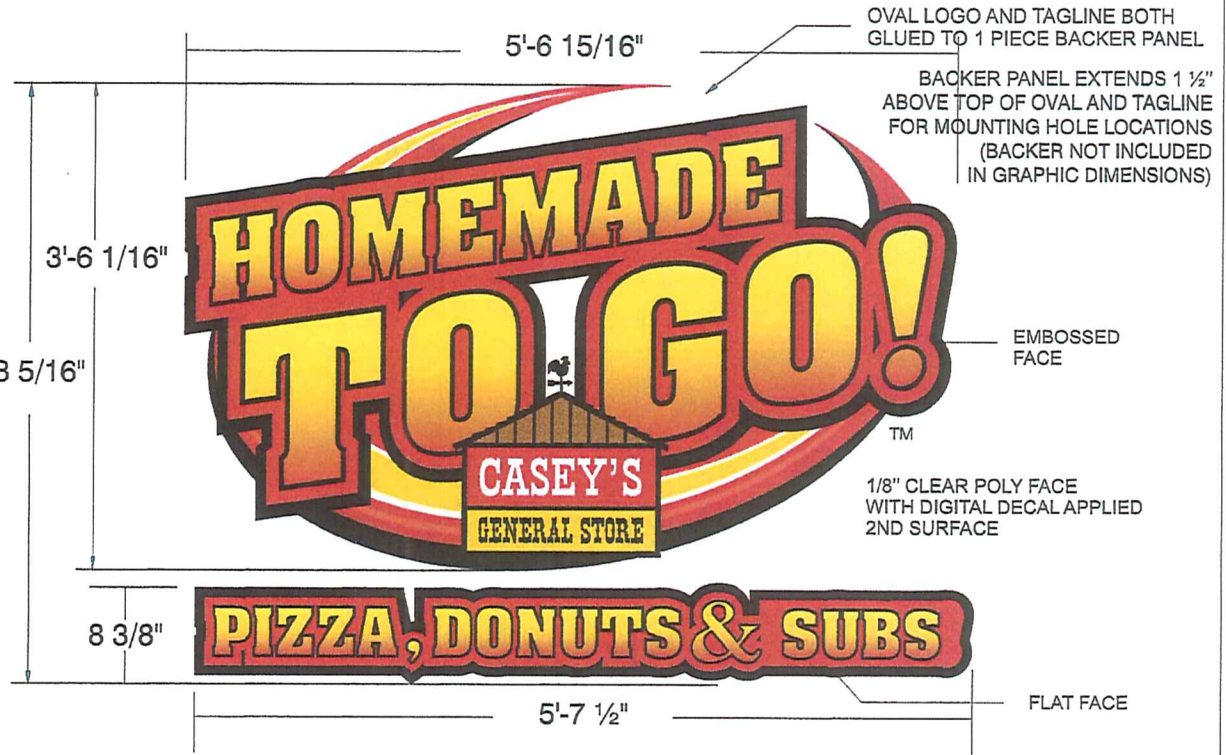
8 DISPENSERS - DOUBLE STACKED - H.I.

GASOLINE ISLAND CANOPY ELEVATIONS
AL-201

sign no. 143

	ACTUAL AREA	BOXED AREA
HOMEMADE TO GO OVAL	15.08 SQ. FT	19.55 SQ. FT
PIZZA, ETC. TAGLINE	3.50 SQ. FT	3.93 SQ. FT

OVERALL BOXED AREA = 24.05 SQ FT 4'-3 5/16"



NOTES

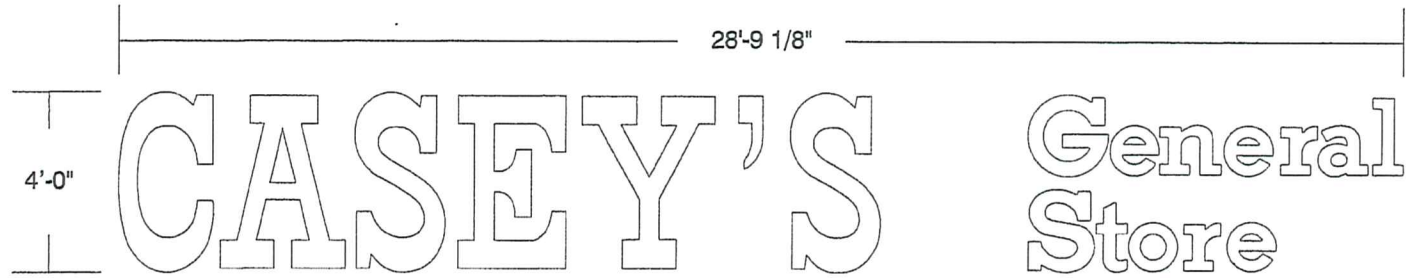
U.L. APPROVED
ELECTRICAL - 1.7 AMPS, 120 VOLTS
CHANNEL LETTER CONSTRUCTION
INCLUDE WEATHERTITE COMPONENTS
OVAL AND TAGLINE ARE GLUED TO BACKER PANEL
FACES ARE 3/16" POLY WITH 2ND SURFACE DECAL APPLIED - BACKSPRAYED WHITE
30 DIFFUSER WHERE ANY WHITE DECORATION SHOWS
TAPE OFF ANY WHITE AREAS ON DECALS BEFORE BACKSPRAYING WHITE
RETURNS AND BACKER PANEL PAINTED DURANODIC BRONZE
TRIM CAP AND ROUTED RETAINER - BLACK
INTERIOR PAINTED REFLECTIVE WHITE
LED ARE RIVETED IN PLACE THRU BACK SO CAN WILL MOUNT FLUSH TO BACKER PANEL
1 E.O. AND POWER SUPPLY
NIPPLE WITH WATERPROOF SEAL EACH END OUT BOTTOM OF OVAL INTO TOP OF TAGLINE FOR ELECTRICAL CONNECTION

Customer: CASEY'S GENERAL STORE	Date: 12/31/08	Prepared By: MWR/IJA/CM	Note: Color output may not be exact when viewing or printing this drawing. All colors used are PMS or the closest CMYK equivalent. If these colors are incorrect, please provide the correct PMS match and a revision to this drawing will be made.
Location: VARIOUS	File Name: 57599 - R2 - 36" & 48" RT LED CL - 32" & 42" HOMEMADE TO GO - 2X3 SIGN C- PRINTS	Eng: X	

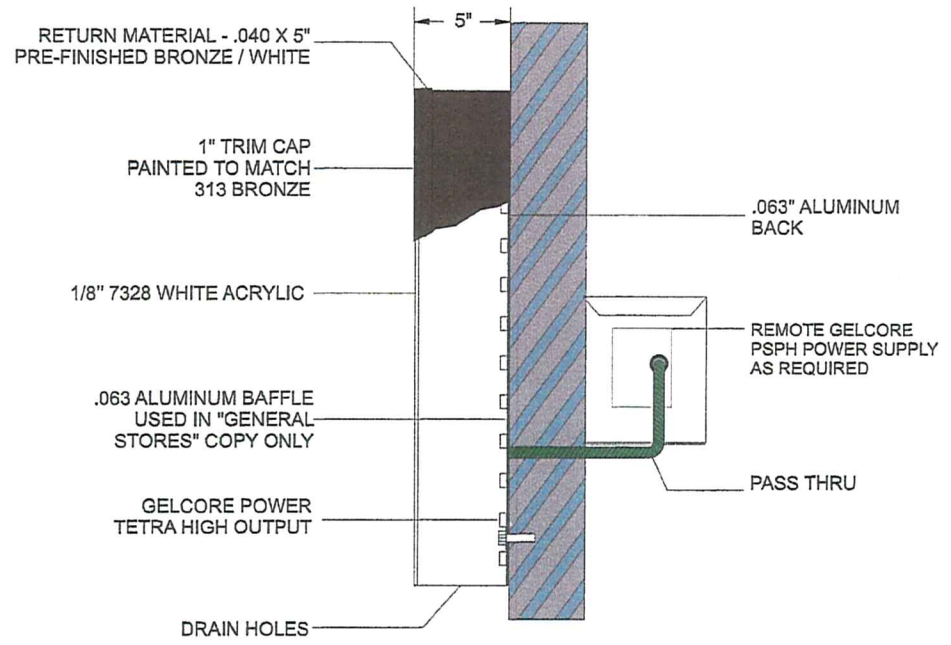


DISTRIBUTED BY SIGN UP COMPANY
700 21st STREET SOUTHWEST
PO BOX 210
WATERTOWN, SD 57201-0210

sign no. 2a42b



GRAPHIC DETAIL
SCALE: 1/4" = 1'-0"



	ACTUAL AREA	BOXED AREA
CASEY'S	24.18 SQ. FT	68.10 SQ. FT
GENERAL STORE	9.33 SQ. FT	33.08 SQ. FT
CASEY'S GENERAL STORE	33.51 SQ. FT	114.78 SQ. FT

NOTES:
U.L. APPROVED
5.4 AMPS / 120 VOLTS

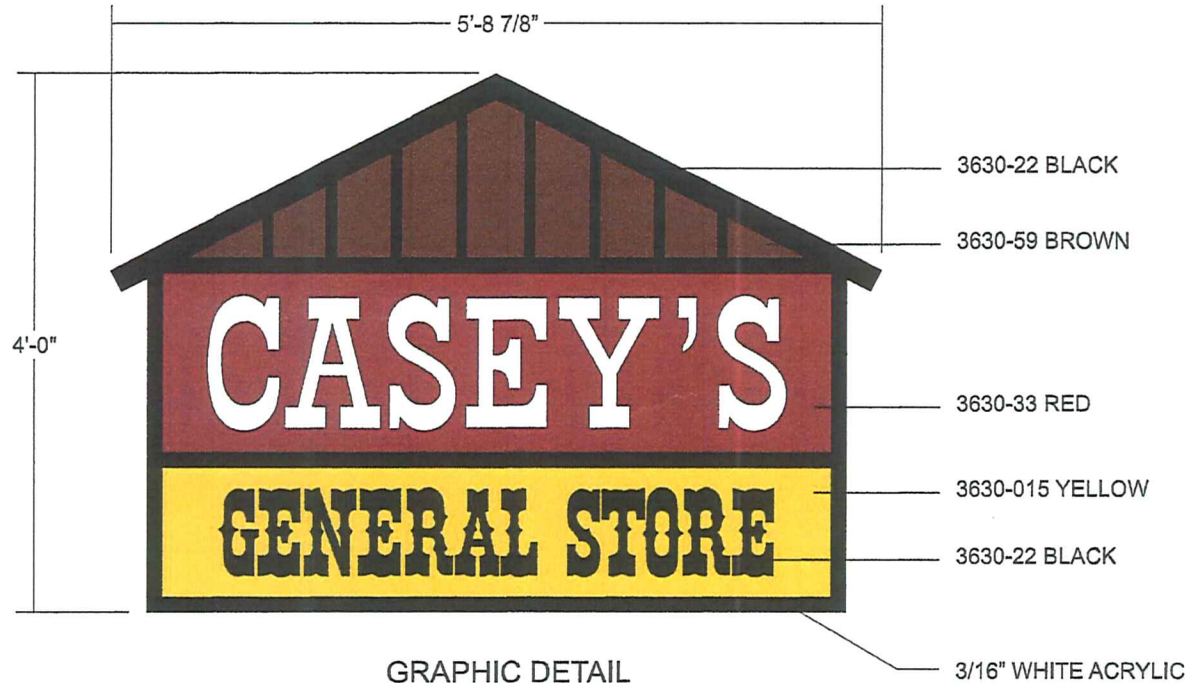
PROFILE
NTS

Customer: CASEY'S GENERAL STORE	Date: 12/31/08	Prepared By: CM/IJA	<small>Note: Color output may not be exact when viewing or printing this drawing. All colors used are PMS or the closest CMYK equivalent. If these colors are incorrect, please provide the correct PMS match and a revision to this drawing will be made.</small>
Location: VARIOUS	File Name: 57599 - R2 - 36" & 48" RT LED CL - 32" & 42" HOMEMADE TO GO - 2X3 SIGN C- PRINTS	Eng: X	

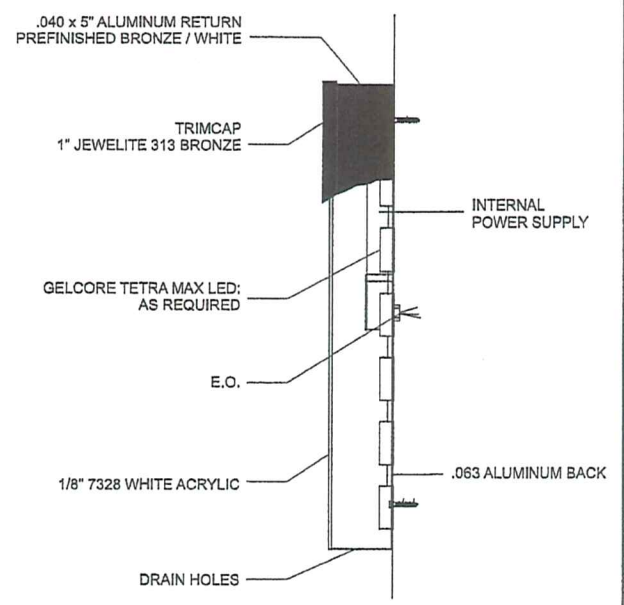


DISTRIBUTED BY SIGN UP COMPANY
700 21st STREET SOUTHWEST
PO BOX 210
WATERTOWN, SD 57201-0210

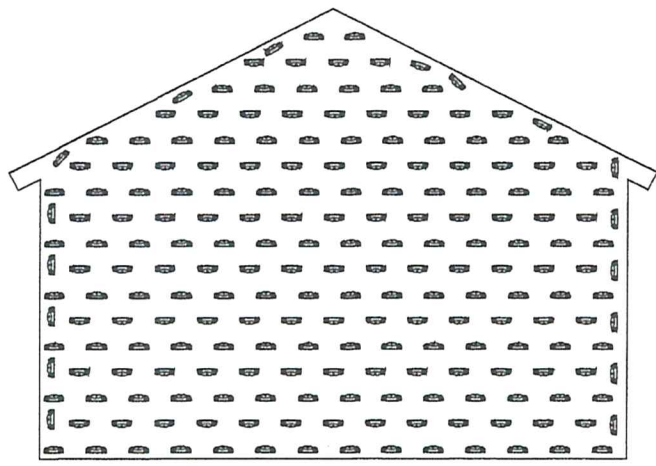
Sign no. 10a, 10b, 10c



GRAPHIC DETAIL
SCALE: 3/4" = 1'



CROSS SECTION
SCALE: NTS



LED DETAIL
SCALE: NTS

ACTUAL SURFACE AREA = 17.485 SQ FT

Customer: CASEY'S	Date: 7/13/11	Prepared By: TtT	<p><small>Note: Color output may not be exact when viewing or printing this drawing. All colors used are PMS or the closest CMYK equivalent. If these colors are incorrect, please provide the correct PMS match and a revision to this drawing will be made.</small></p>	<p>PERSONA SIGN MAKERS IMAGE BUILDERS</p>	<p>DISTRIBUTED BY SIGN UP COMPANY 700 21st Street Southwest PO Box 210 Watertown, SD 57201-0210 1 (800) 843-9888 • www.persona-inc.com</p>
Location: VARIOUS	File Name: 1000 - 4X3 SF	Eng: -			

