

RECEIVED
JAN 23 2015
BY:

REVISIONS	BY
03060	SE

SPECIAL NOTICE:
CROIX DESIGN AND DRAFTING, INC. ACCEPTS NO RESPONSIBILITY FOR ERRORS AND/OR OMISSIONS. THESE DRAWINGS ARE DESIGN CONCEPT ONLY. EVERY EFFORT HAS BEEN MADE DESIGNING ACCURATELY. THE USER, CLIENT, ARCHITECT, ENGINEER, SUB-CONTRACTORS, AND SUPPLIERS MUST CHECK ALL DETAILS AND DIMENSIONS AND BE RESPONSIBLE FOR ANY CHANGES OR ADJUSTMENTS REQUIRED DURING ACTUAL CONSTRUCTION. NO REPRESENTATION IS MADE OR IMPLIED FOR ACCURACY.

COPYRIGHT NOTICE, ALL RIGHTS RESERVED
THESE ARCHITECTURAL PLANS AND ALL RELATED WORKS ARE PROTECTED BY UNITED STATES COPYRIGHT LAWS, AND MAY NOT BE REPRODUCED OR TRANSMITTED IN ANY FORM OR BY ANY MEANS, WITHOUT THE EXPRESS WRITTEN PERMISSION OF CROIX DESIGN AND DRAFTING, INC. CROIX DESIGN AND DRAFTING, INC.

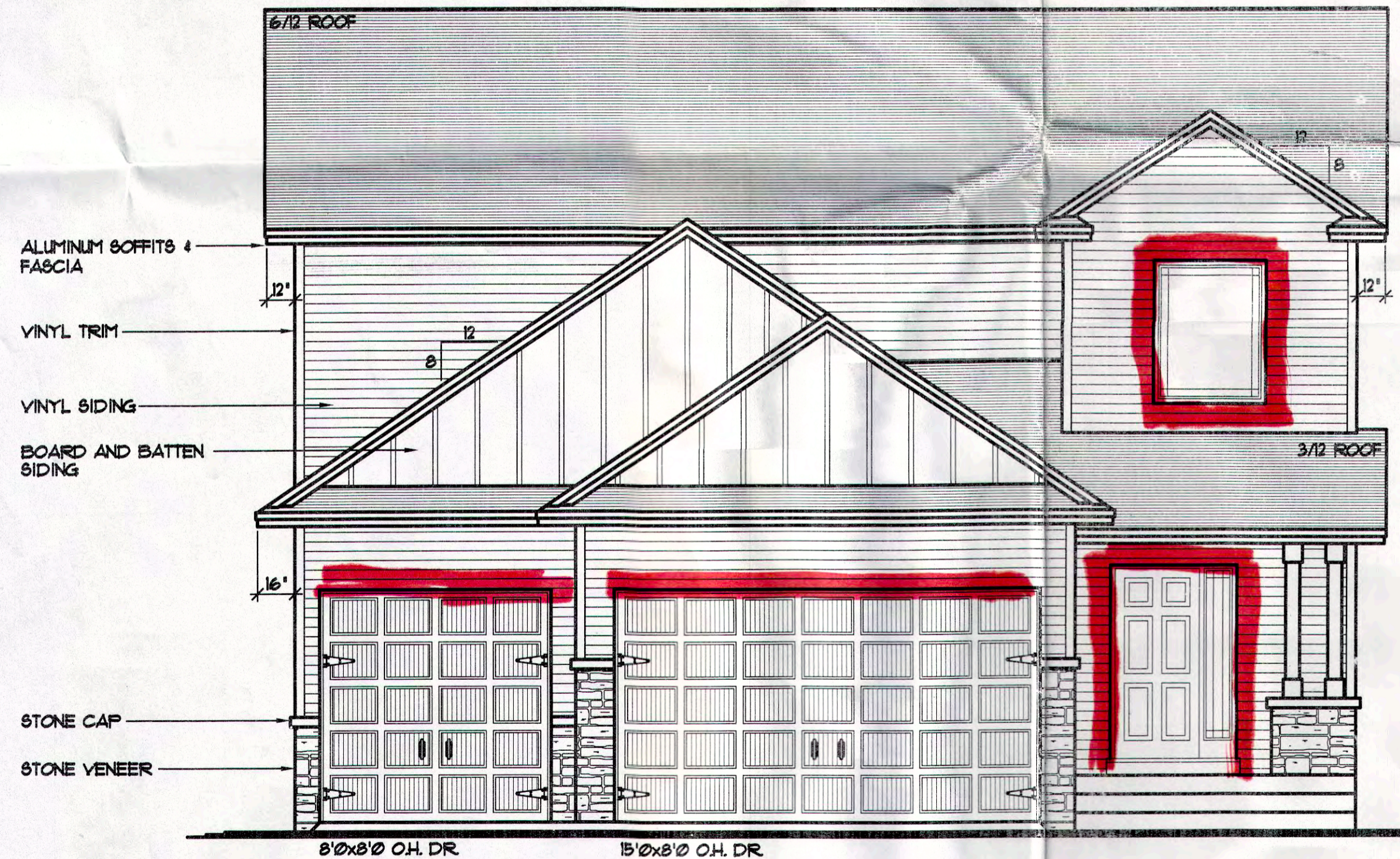
NOTE III
ADJUST HEEL HEIGHT @
6/12 ROOF w/18" OVERHANG
TO MATCH 8/12 ROOF
w/12" OVERHANG (TYP.)

NOTE III
PROVIDE STANDARD
ENERGY HEEL @ ALL
ROOF TRUSSES (TYP.)

NOTE III
9'-1 1/8" PLATE
HEIGHT @ ENTIRE
MAIN LEVEL (UNO.)

- SILVERLINE WINDOWS SPEC'D
- STONE VENEER @ FRONT AS SHOWN
- VINYL SIDING / CORNER TRIM
- ALUMINUM SOFFITS & FASCIA
- BOARD AND BATTEN WHERE SHOWN
- WINDOWS WITH GRIDS AS SHOWN

← 1x8-TRIM BRMP



NOTE III
8'-1 1/8" PLATE
HEIGHT @ FRONT
STOOP AREA (TYP.)

- ALUMINUM SOFFITS & FASCIA
- VINYL TRIM
- VINYL SIDING
- BOARD AND BATTEN SIDING
- STONE CAP
- STONE VENEER

FRONT ELEVATION 1/4" = 1'-0"
 965 SQFT. MAIN LEVEL
 943 SQFT. UPPER LEVEL
 1908 SQFT. TOTAL
 200 SQFT. OPEN STAIR AREA NOT INCLUDED

© COPYRIGHT 2015 NOTICE, ALL RIGHTS RESERVED
CROIX DESIGN and DRAFTING, INC.

DESIGN and DRAFTING BY:

ARCHITECTURAL DESIGN and DRAFTING SERVICE •
 HOME PALN SERVICE • CUSTOM HOMES • REMODELING •
 PHONE: 763.757.5997 • ANDOVER, MINNESOTA •
 WWW.CROIXDESIGN.COM

BUILT BY:
PURMORT HOMES

DRAWN	ZF
CHECKED	ZF
DATE:	01/23/2015
SCALE:	AS NOTED
CADD FILE #	15021

SPECIAL NOTICE:
 CROIX DESIGN & DRAFTING, INC. ACCEPTS NO RESPONSIBILITY FOR ERRORS AND/OR OMISSIONS. THE USER OF THESE DRAWINGS IS RESPONSIBLE FOR VERIFYING ALL DIMENSIONS AND CONDITIONS. THE USER SHALL BE RESPONSIBLE FOR OBTAINING ALL NECESSARY PERMITS AND CHECKING THE LOCAL CODES AND REGULATIONS. THE USER SHALL BE RESPONSIBLE FOR OBTAINING ALL NECESSARY PERMITS AND CHECKING THE LOCAL CODES AND REGULATIONS. THE USER SHALL BE RESPONSIBLE FOR OBTAINING ALL NECESSARY PERMITS AND CHECKING THE LOCAL CODES AND REGULATIONS.

OFFICE: 763.757.5997
 FAX: 763.757.4383
 ANDOVER, MINNESOTA
 WWW.CROIXDESIGN.COM

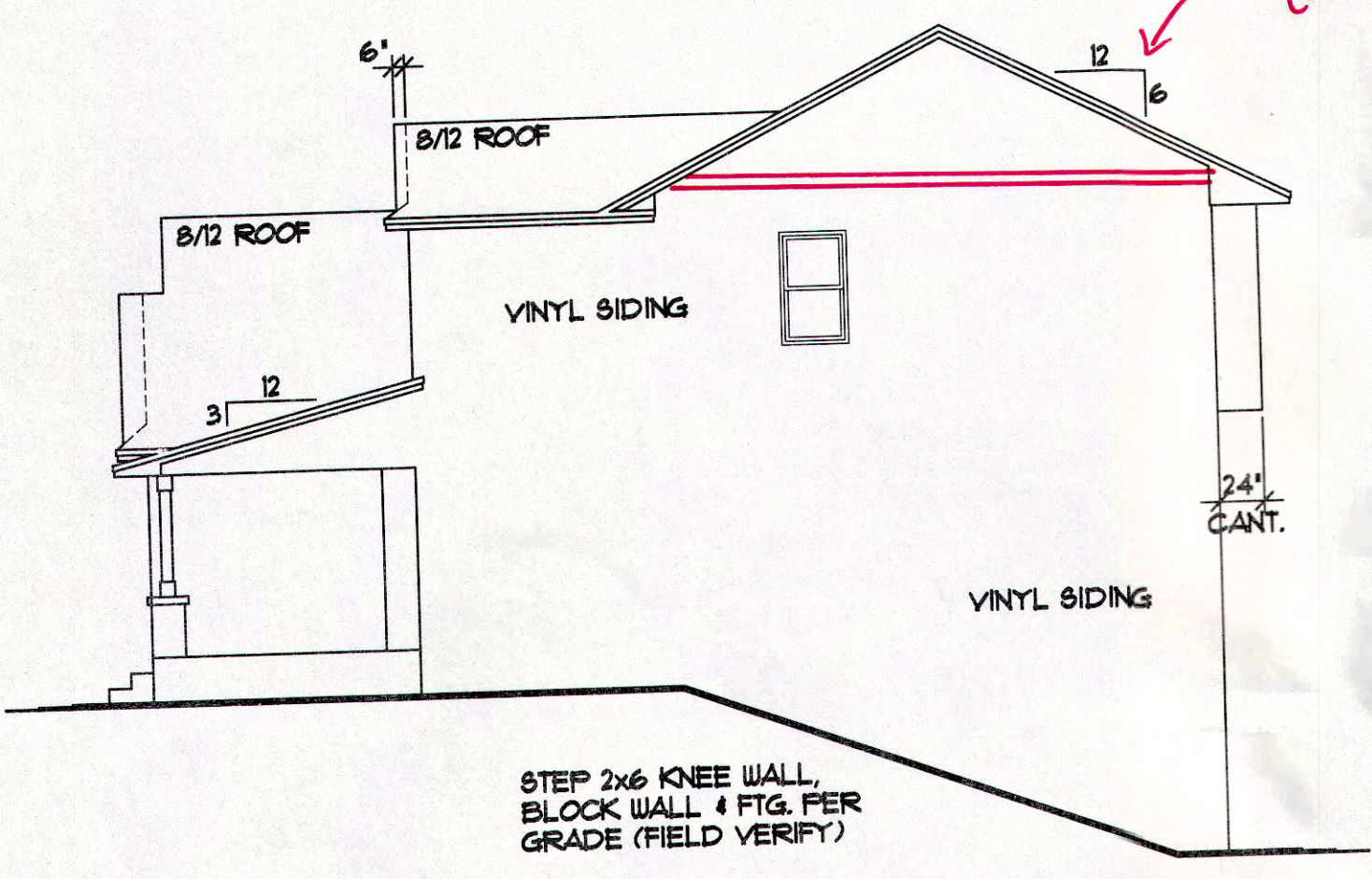


BUILT BY:
PURMORT HOMES

SHEET
2
 OF
 7
 CADD FILE #
 15021

NOTE III
 ADJUST HEEL HEIGHT *
 6/12 ROOF w/18' OVERHANG
 TO MATCH 8/12 ROOF
 w/12' OVERHANG (TYP.)

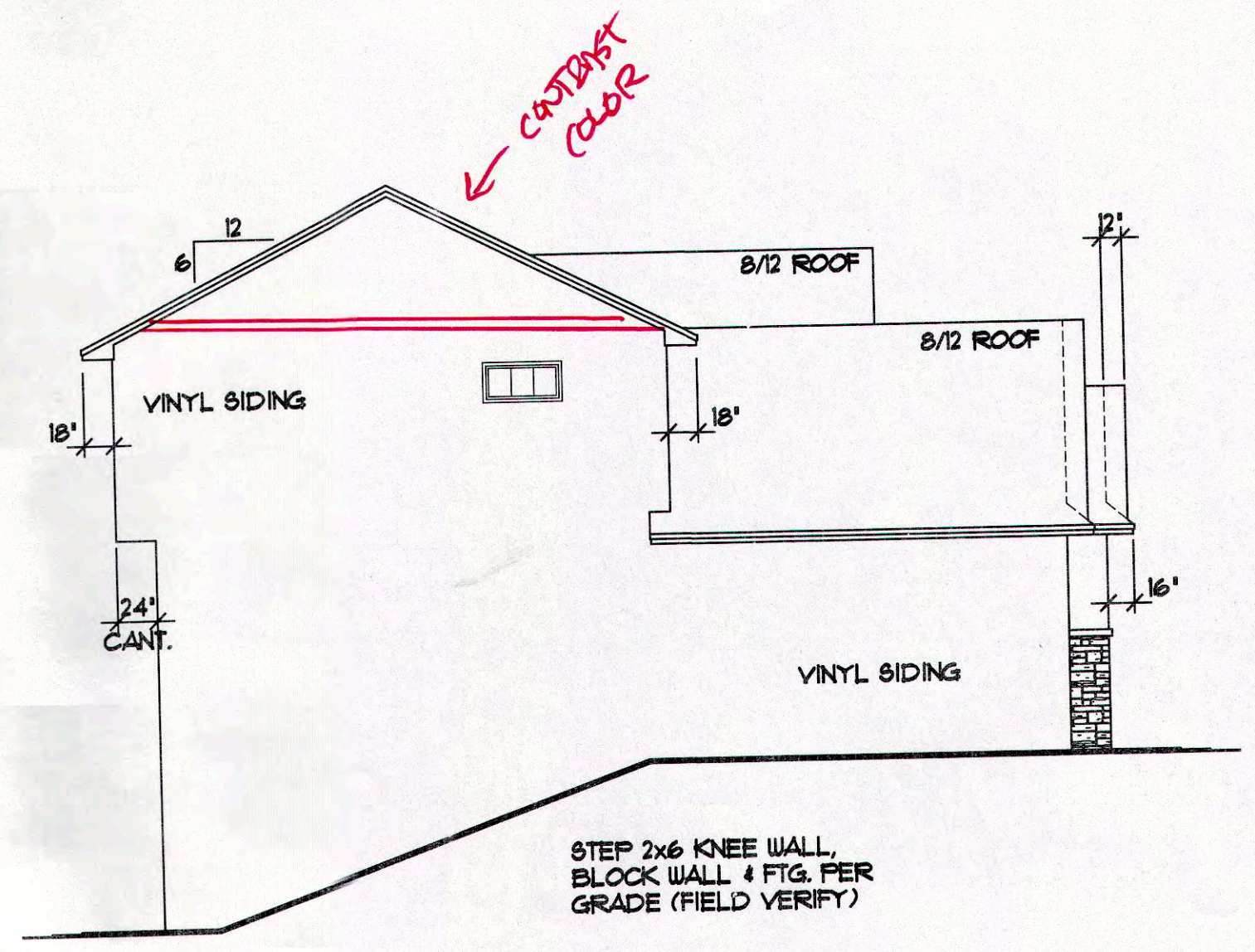
CONTRAST COLOR



RIGHT ELEVATION 1/8"=1'-0"

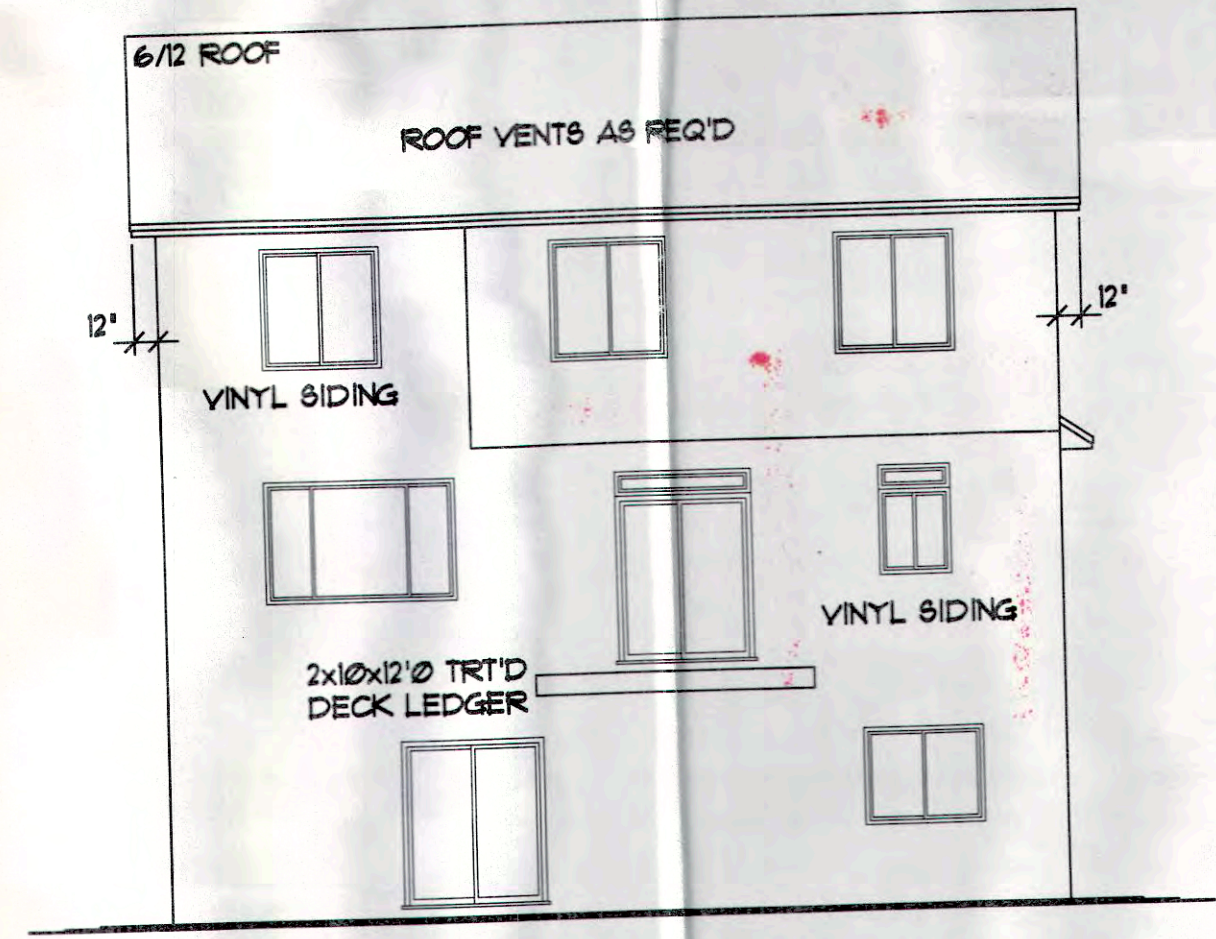
NOTE III
 PROVIDE STANDARD
 ENERGY HEEL * ALL
 ROOF TRUSSES (TYP.)

NOTE III
 9'-1 1/8" PLATE
 HEIGHT * ENTIRE
 MAIN LEVEL (UNO.)

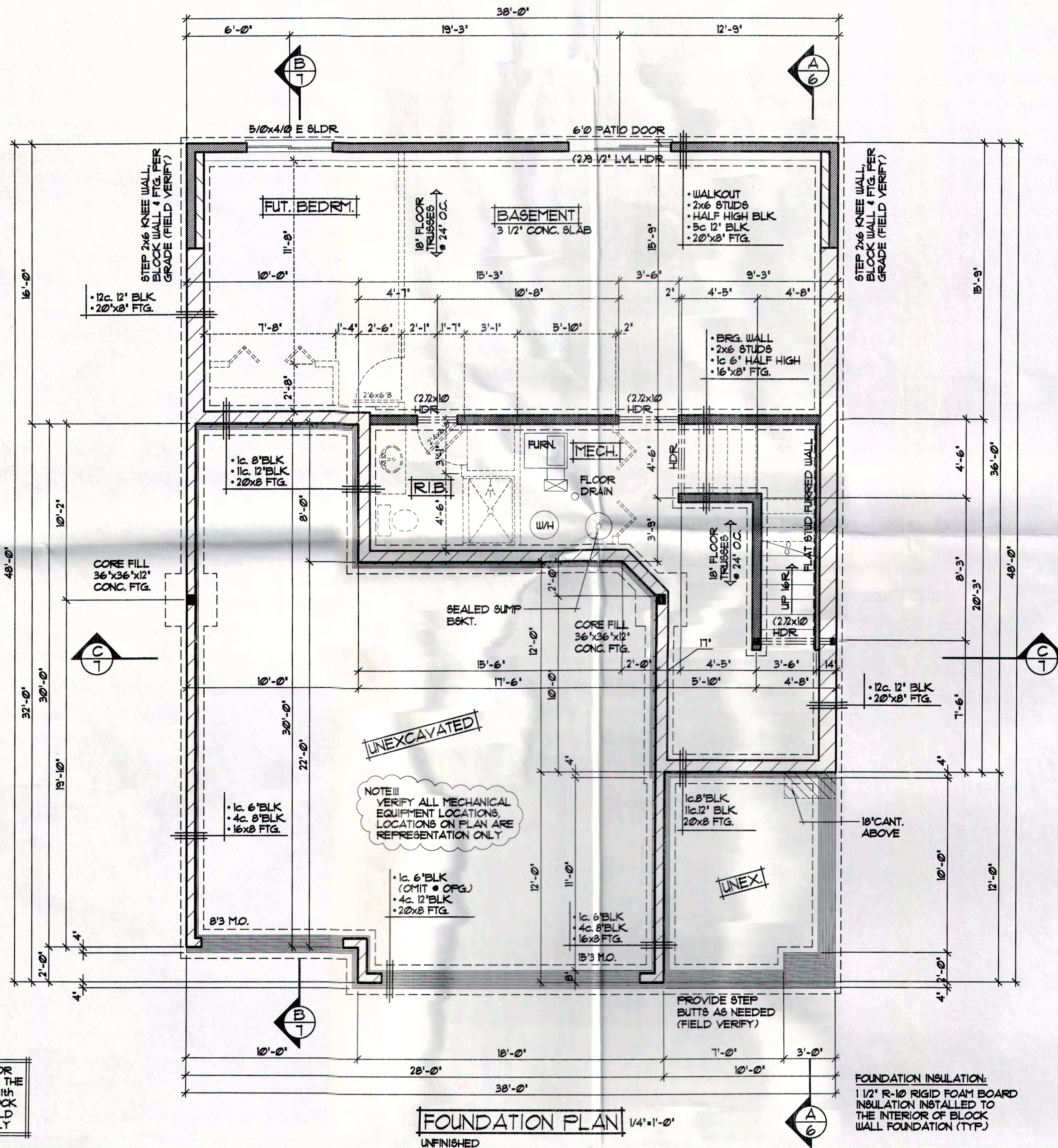


LEFT ELEVATION 1/8"=1'-0"

NOTE III
 ADJUST HEEL HEIGHT *
 6/12 ROOF w/18' OVERHANG
 TO MATCH 8/12 ROOF
 w/12' OVERHANG (TYP.)



REAR ELEVATION 1/8"=1'-0"



ALL HEIGHT CALCULATIONS FOR FOUNDATIONS ARE BASED ON THE USE OF FULL 8" HIGH BLOCK WITH 3/8" JOINTS. IF MODULAR BLOCK IS USED, CONTRACTORS SHOULD ADJUST HEIGHTS ACCORDINGLY

FOUNDATION PLAN 1/4" = 1'-0"
UNFINISHED

FOUNDATION INSULATION:
1 1/2" R-10 RIGID FOAM BOARD INSULATION INSTALLED TO THE INTERIOR OF BLOCK WALL FOUNDATION (TYP)

NOTE III
VERIFY ALL MECHANICAL EQUIPMENT LOCATIONS ON PLAN ARE REPRESENTATION ONLY

NOTE III
DO NOT HOLD RIM JOIST IN RIM AREA TO BE INSULATED WITH CLOSED CELL SPRAYED FOAM INSULATION (TYP)

NOTE III
SOLID CAP BLOCK • TOP COURSE & GROUT SOLID WERE ANCHOR BOLTS ARE USED & BRICK LEDGES

NOTE III
INSULATION & AIR BARRIER TO BE CONTINUOUS OVER TOP OF FOUNDATION WALLS (TYP)

NOTE III
ALL WDW/DOOR OPENINGS TO HAVE (2x2x10 #2 GRADE HDR OR BETTER (UNO.)

NOTE III
SILVERLINE WINDOW SIZES SPEC'D. VERIFY ALL R.O.'S FOR DOORS AND WINDOWS SUPPLIER (TYP)

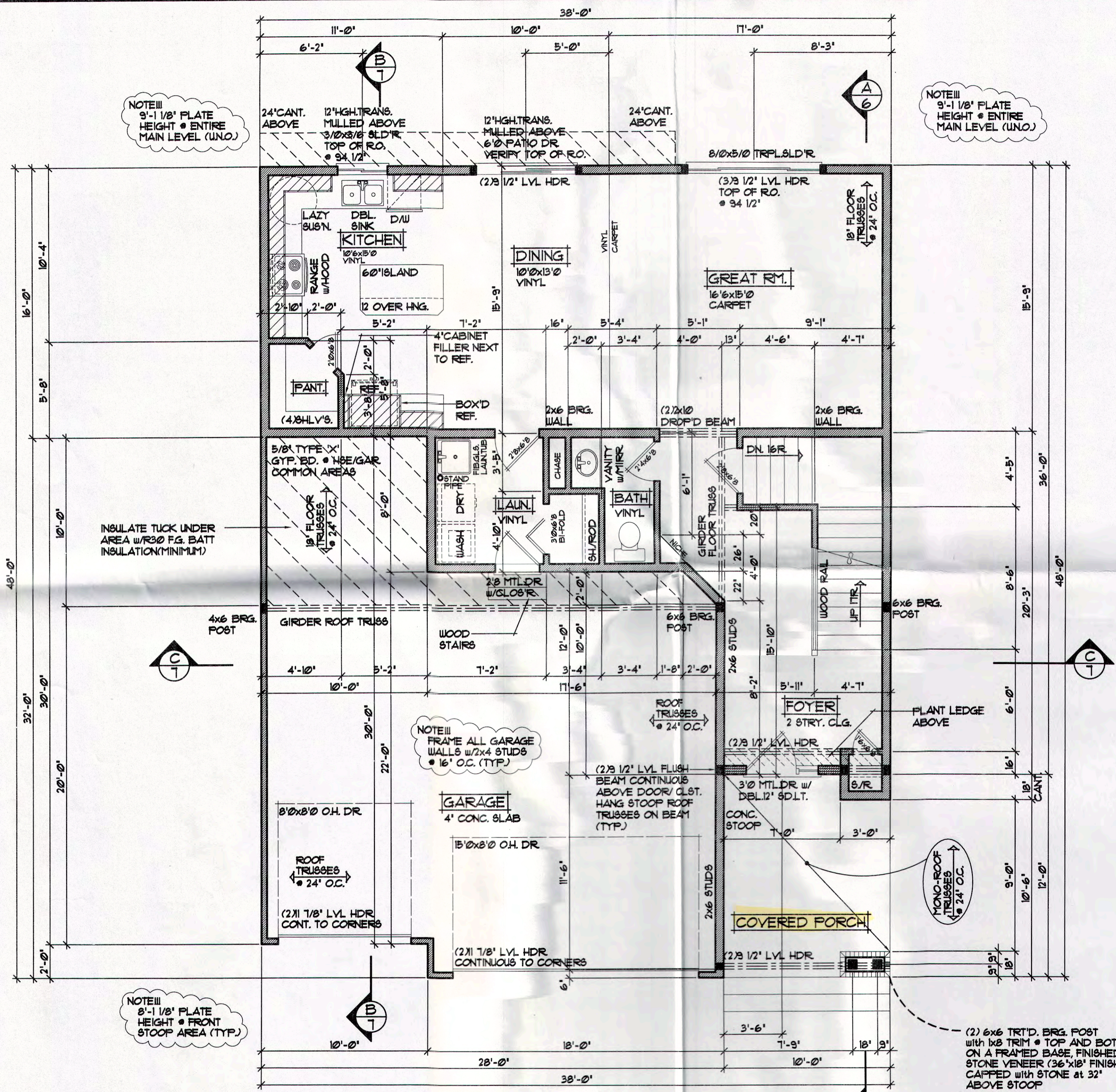
SPECIAL NOTICE:
CROIX DESIGN AND DRAFTING, INC. ACCEPTS NO RESPONSIBILITY FOR ERRORS AND/OR OMISSIONS. THESE DRAWINGS ARE DESIGN CONCEPT ONLY. EVERY EFFORT HAS BEEN MADE TO PREPARE THESE DRAWINGS ACCURATELY. THE CONTRACTOR SHALL CHECK ALL DETAILS AND DIMENSIONS AND BE RESPONSIBLE FOR ANY CHANGES OR ADJUSTMENTS REQUIRED DURING ACTUAL CONSTRUCTION. NO REPRESENTATION IS MADE OR IMPLIED FOR ACCURACY.

OFFICE: 763.757.5997
FAX: 763.757.4383
ANDOVER, MINNESOTA
WWW.CROIXDESIGN.COM



BUILT BY:
PURMORT HOMES

SHEET
3
OF 7
CADD FILE #
15021



NOTE III
9'-1 1/8" PLATE
HEIGHT @ ENTIRE
MAIN LEVEL (UNO.)

NOTE III
9'-1 1/8" PLATE
HEIGHT @ ENTIRE
MAIN LEVEL (UNO.)

INSULATE TUCK UNDER
AREA w/R30 FG. BATT
INSULATION (MINIMUM)

NOTE III
FRAME ALL GARAGE
WALLS w/2x4 STUDS
@ 16" O.C. (TYP.)

NOTE III
DO NOT HOLD RIM JOIST IN!!
RIM AREA TO BE INSULATED
WITH CLOSED CELL SPRAYED
FOAM INSULATION (TYP.)

NOTE III
ALL WDW/DOOR OPENINGS
TO HAVE (2.2x10 #2 GRADE
HDR OR BETTER (UNO.)

NOTE III
SILVERLINE WINDOW SIZES
SPEC'D. VERIFY ALL RO.'s
FOR DOORS AND WINDOWS
SUPPLIER (TYP.)

NOTE III
8'-1 1/8" PLATE
HEIGHT @ FRONT
STOOP AREA (TYP.)

(2) 6x6 TRTD. BRG. POST
WITH 1x8 TRIM @ TOP AND BOTTOM
ON A FRAMED BASE, FINISHED WITH
STONE VENEER (36"x18" FINISHED)
CAPPED WITH STONE @ 32"
ABOVE STOOP

MAIN LEVEL PLAN 1/4" = 1'-0"
365 SQFT. MAIN LEVEL

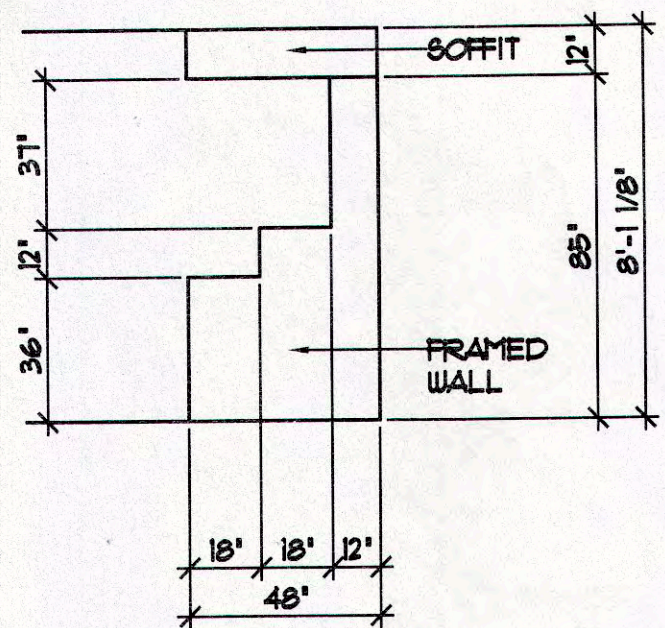
SPECIAL NOTICE:
CROIX DESIGN AND DRAFTING, INC. ACCEPTS NO RESPONSIBILITY FOR ERRORS AND/OR OMISSIONS. THESE DRAWINGS ARE DESIGN CONCEPT ONLY. EVERY EFFORT HAS BEEN MADE TO ACCURATELY REPRESENT THE DESIGN INTENT. THE CLIENT IS RESPONSIBLE FOR VERIFYING ALL DIMENSIONS AND CONDITIONS WITH THE LOCAL PERMITS OFFICE AND THE LOCAL SUPPLIER. CROIX DESIGN AND DRAFTING, INC. IS NOT RESPONSIBLE FOR ANY CHANGES OR ADJUSTMENTS REQUIRED DURING CONSTRUCTION. NO REPRESENTATION IS MADE OR IMPLIED FOR ACCURACY.

OFFICE: 763.757.5997
FAX: 763.757.4383
ANDOVER, MINNESOTA
WWW.CROIXDESIGN.COM

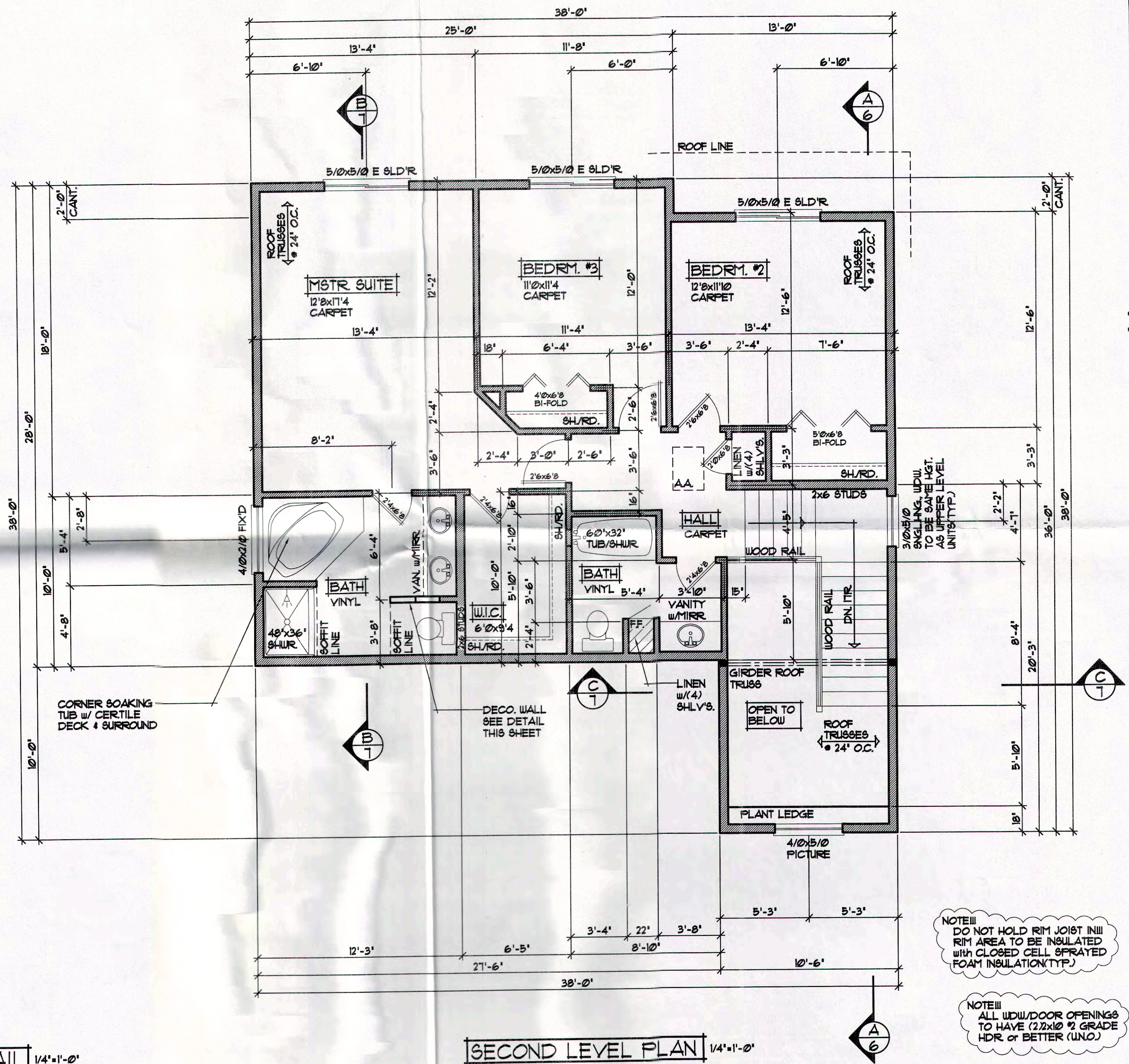


BUILT BY:
PURMORT HOMES

SHEET
4
of 7
CADD FILE #
15021



MASTER BATH WALL DETAIL 1/4"=1'-0"



SECOND LEVEL PLAN 1/4"=1'-0"

943 SQFT. SECOND LEVEL
200 SQFT. OPEN STAIR AREA NOT INCLUDED

NOTE III
DO NOT HOLD RIM JOIST IN!!!
RIM AREA TO BE INSULATED
WITH CLOSED CELL SPRAYED
FOAM INSULATION (TYP.)

NOTE III
ALL WDW/DOOR OPENINGS
TO HAVE (2)2x10 #2 GRADE
HDR OR BETTER (W.N.O.)

NOTE III
SILVERLINE WINDOW SIZES
SPEC'D. VERIFY ALL RO.'S
FOR DOORS AND WINDOWS
SUPPLIER (TYP.)

SPECIAL NOTICE:
CROIX DESIGN AND DRAFTING, INC. ACCEPTS NO RESPONSIBILITY FOR ERRORS AND/OR OMISSIONS. THESE DRAWINGS ARE DESIGN CONCEPT ONLY. EVERY EFFORT HAS BEEN MADE TO DESIGN AND PREPARE THESE PLANS AND CHECKING THEM FOR ACCURACY. THE OWNER'S GENERAL CONTRACTOR SHALL BE SOLELY RESPONSIBLE FOR ANY CHANGES OR ADJUSTMENTS REQUIRED DURING ACTUAL CONSTRUCTION. NO REPRESENTATION IS MADE OR IMPLIED FOR ACCURACY.

OFFICE: 763.757.5997
FAX: 763.757.4383
ANDOVER, MINNESOTA
WWW.CROIXDESIGN.COM



BUILT BY:
PURMORT HOMES

SHEET
5
OF 7
CADD FILE #
B021