

COR PARKVIEW ADDITION

DRAFT

CITY OF RAMSEY
COUNTY OF ANOKA
SEC. 28, TWP. 32, RGE. 25

KNOW ALL PERSONS BY THESE PRESENTS, That PSD, LLC, a Minnesota limited liability company, owner of the following described property:

OUTLOT A, RAMSEY TOWN CENTER 11TH ADDITION, according to the recorded plat thereof, Anoka County, Minnesota;

has caused the same to be surveyed and platted as COR PARKVIEW ADDITION and does hereby dedicate to the public for public use the drainage and utility easements as created by this plat.

In witness whereof said PSD, LLC, a Minnesota limited liability company, has caused these presents to be signed by its proper officer this

____ day of _____, 2015.

SIGNED: PSD, LLC

By _____ Chief Manager

Pamela S. Deal

STATE OF MINNESOTA
COUNTY OF _____

This instrument was acknowledged before me this ____ day of _____, 2015, by Pamela S. Deal, Chief Manager of PSD, LLC, a Minnesota limited liability company.

Notary Public, _____ County, Minnesota

My Commission Expires _____

I, Nathaniel T. Stadler do hereby certify that this plat was prepared by me or under my direct supervision; that I am a duly Licensed Land Surveyor in the State of Minnesota; that this plat is a correct representation of the boundary survey; that all mathematical data and labels are correctly designated on this plat; that all monuments depicted on this plat have been, or will be correctly set within one year; that all water boundaries and wet lands, as defined in Minnesota Statutes, Section 505.01, Subd. 3, as of the date of this certificate are shown and labeled on this plat; and all public ways are shown and labeled on this plat.

Draftsman _____ day of _____, 2015.

DRAFT

Nathaniel T. Stadler, Licensed Land Surveyor
Minnesota License No. 43934

STATE OF MINNESOTA
COUNTY OF ANOKA

This instrument was acknowledged before me this ____ day of _____, 2015 by Nathaniel T. Stadler.

Notary Public, _____ County, Minnesota

My Commission Expires _____

CITY COUNCIL, CITY OF RAMSEY, MINNESOTA

This plat of RAMSEY TOWN CENTER 12TH ADDITION was approved and accepted by the City Council of the City of Ramsey, Minnesota at a regular meeting thereof held this ____ day of _____, 2015, and said plat is in compliance with the provisions of Minnesota Statutes, Section 505.03, Subd. 2. _____, 2015, and said plat City Council, City of Ramsey, Minnesota

By _____ Mayor

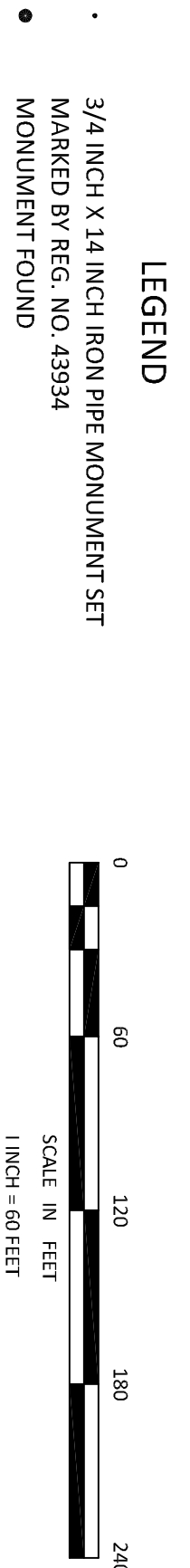
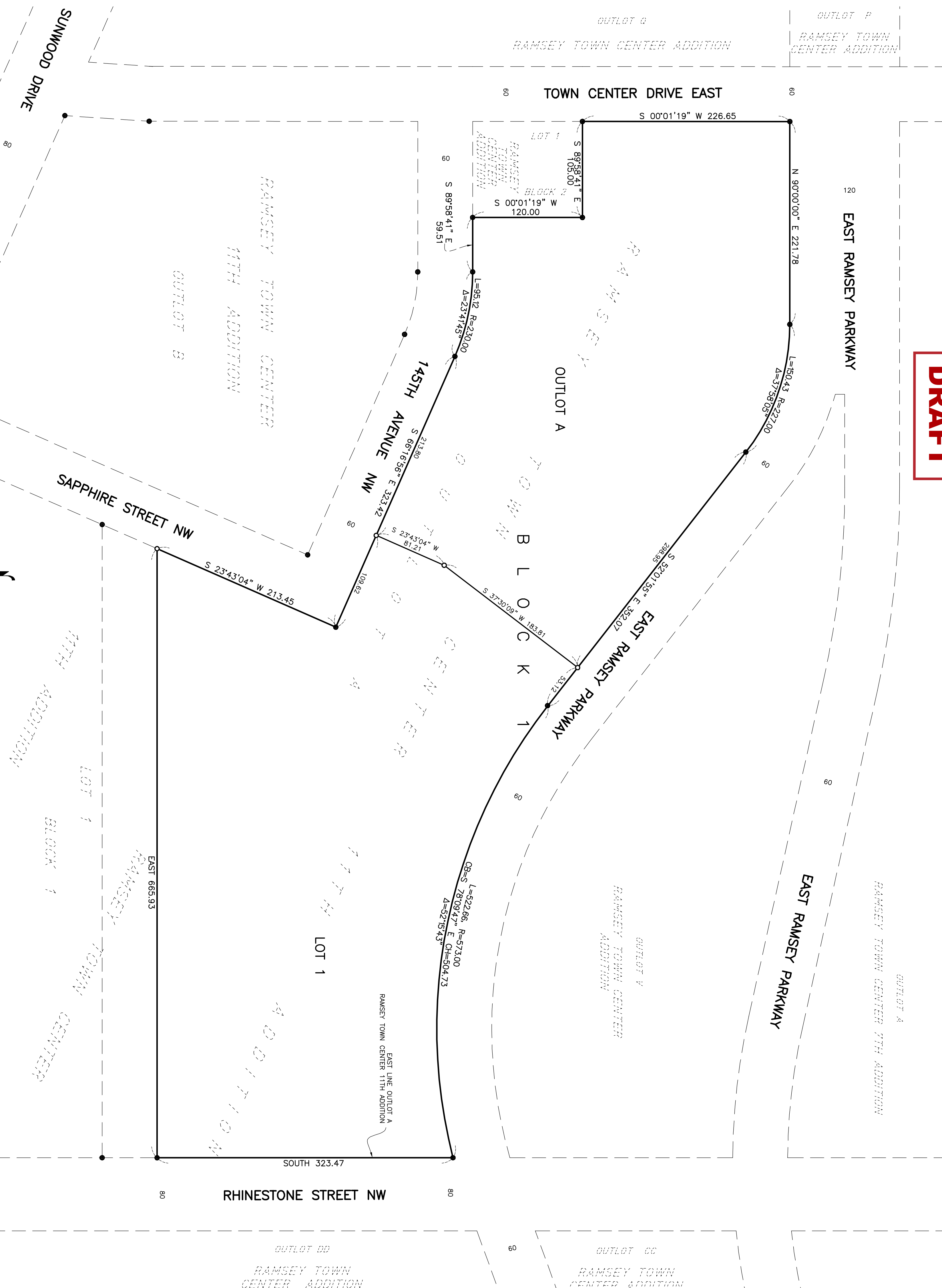
By _____ City Clerk

COUNTY SURVEYOR

I hereby certify that in accordance with Minnesota Statutes, Section 505.021, Subd. 11, this plat has been reviewed and approved this

____ day of _____, 2015.

Larry D. Holm, Anoka County Surveyor



For the purposes of this plat the East line of Outlot A, RAMSEY TOWN CENTER 11TH ADDITION is assumed to bear SOUTH.