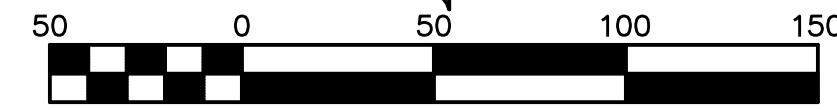
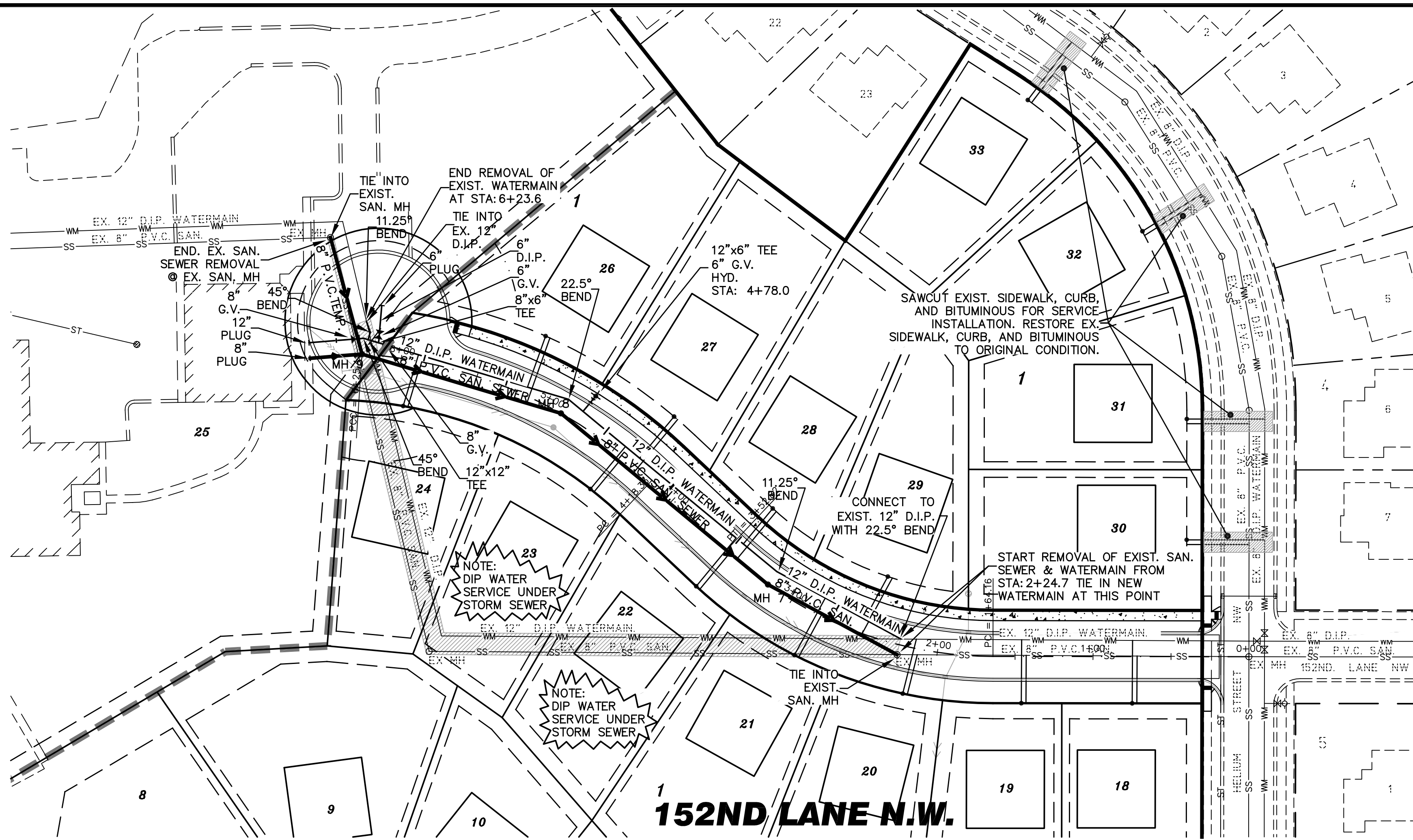


**GENERAL CONSTRUCTION NOTES:**

- Existing Utility Locations As-Per As-Built Plans Provided By the City Of Ramsey and Hedlund Engineering.
- All Existing Utilities or Improvements, Including Walks, Curbs, Pavement and Parkways Damaged or Removed During Construction Shall be Promptly Restored to Their Respective Original Condition.
- The Contractor Shall Notify all Utility Companies Prior to Construction to Verify in the Field all Existing and Underground Utilities Adjacent to the Project, and be Responsible for Protection of the same.
- For on Site Location of all Underground Utilities Call Gopher State One Call System (651)454-0002
- The Contractor Shall Beware of Potential Conflicts with Existing Utilities as Indicated on the Plans. The Contractor Shall Excavate Around Utilities to Determine Elev. Before Beginning Construction.
- The Contractor Shall Be Responsible To Lower Watermain During Install. Where Necessary To Avoid Service Conflicts.



Scale 1" = 50'



**SAN. SERVICE SCHEDULE**

BLOCK 1 UNIT #	WYE STA.	INVERT ELEVATION	SERVICE
1	0+61.7	880.9	4" P.V.C. SDR 26
2	0+80.3	881.4	4" P.V.C. SDR 26
3	1+27.5	881.9	4" P.V.C. SDR 26
4	0+58.4	881.4	4" P.V.C. SDR 26
5	0+64.7	880.8	4" P.V.C. SDR 26
6	0+6.0	883.3	4" P.V.C. SDR 26
7	0+68.3	883.8	4" P.V.C. SDR 26
8	0+93.1	884.3	4" P.V.C. SDR 26
9	1+06.0	884.9	4" P.V.C. SDR 26
10	0+80.7	884.2	4" P.V.C. SDR 26
11	1+35.5	882.4	4" P.V.C. SDR 26
12	0+43.0	881.2	4" P.V.C. SDR 26
13	0+51.4	878.2	4" P.V.C. SDR 26
14	0+59.9	873.8	4" P.V.C. SDR 26
15	1+15.0	873.5	4" P.V.C. SDR 26
16	0+38.4	874.2	4" P.V.C. SDR 26
17	2+22.5	875.1	4" P.V.C. SDR 26
18	0+71.7	876.9	4" P.V.C. SDR 26
19	1+42.9	877.3	4" P.V.C. SDR 26
20	2+12.8	878.2	4" P.V.C. SDR 26
21	0+54.8	879.6	4" P.V.C. SDR 26
22	0+31.7	881.1	4" P.V.C. SDR 26
23	1+23.9	883.1	4" P.V.C. SDR 26
24	0+95.4	880.7	4" P.V.C. SDR 26
26	0+22.9	882.8	4" P.V.C. SDR 26
27	1+12.2	883.0	4" P.V.C. SDR 26
28	0+25.7	881.1	4" P.V.C. SDR 26
29	0+26.1	878.9	4" P.V.C. SDR 26
30	0+72.0	876.5	4" P.V.C. SDR 26
31	1+49.6	877.5	4" P.V.C. SDR 26
32	0+37.7	879.4	4" P.V.C. SDR 26
33	0+47.5	881.0	4" P.V.C. SDR 26

**WATER SERVICE SCHEDULE**

BLOCK 1 UNIT #	C.S. STA.	ELEVATION	SERVICE
1	0+69.7	890.9	1" COPPER TYPE "K"
2	1+31.1	891.4	1" COPPER TYPE "K"
3	1+61.0	891.9	1" COPPER TYPE "K"
4	1+31.8	891.4	1" COPPER TYPE "K"
5	0+72.7	890.8	1" COPPER TYPE "K"
6	5+97.9	893.3	1" COPPER TYPE "K"
7	6+47.2	893.8	1" COPPER TYPE "K"
8	6+96.7	894.3	1" COPPER TYPE "K"
9	7+30.5	894.9	1" COPPER TYPE "K"
10	7+01.8	894.2	1" COPPER TYPE "K"
11	5+38.8	892.4	1" COPPER TYPE "K"
12	4+43.4	891.2	1" COPPER TYPE "K"
13	3+41.3	888.2	1" COPPER TYPE "K"
14	2+33.6	882.2	1" COPPER TYPE "K"
15	* 1+18.0	883.5	1" COPPER TYPE "K"
16	* 0+41.4	884.2	1" COPPER TYPE "K"
17	* 2+25.5	885.1	1" COPPER TYPE "K"
18	* 0+74.9	886.9	1" COPPER TYPE "K"
19	1+46.0	887.3	1" COPPER TYPE "K"
20	2+16.3	888.2	1" COPPER TYPE "K"
21	2+86.3	889.6	1" COPPER TYPE "K"
22	3+51.2	891.1	1" COPPER TYPE "K"
23	4+46.1	893.1	1" COPPER TYPE "K"
24	5+93.6	890.7	1" COPPER TYPE "K"
26	5+20.2	892.8	1" COPPER TYPE "K"
27	4+34.1	893.0	1" COPPER TYPE "K"
28	3+49.0	891.1	1" COPPER TYPE "K"
29	2+46.1	888.9	1" COPPER TYPE "K"
30	* 0+75.0	886.5	1" COPPER TYPE "K"
31	* 1+52.6	887.5	1" COPPER TYPE "K"
32	* 0+40.7	889.4	1" COPPER TYPE "K"
33	* 0+50.5	891.0	1" COPPER TYPE "K"

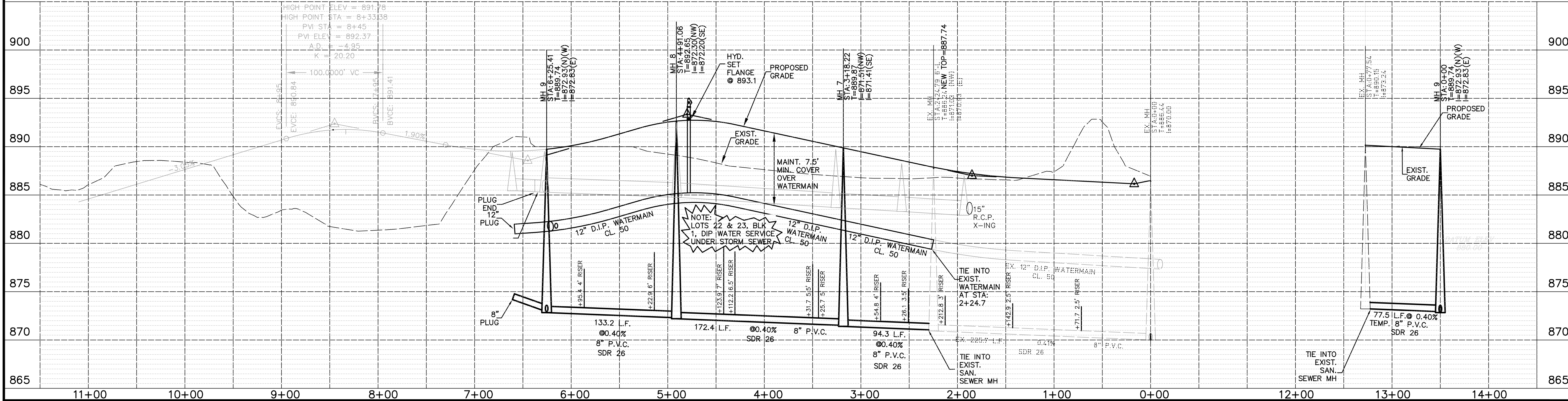
**CS. STA. NOTE:**  
CS. STA WITH A \* DENOTES STATIONS ARE FROM DOWNSTREAM SANITARY MH. ALL OTHER STATIONS ARE FROM CENTERLINE STATIONING

**WATER, SANITARY & STORM NOTES:**

- ALL SANITARY SEWER SERVICES ARE 4" P.V.C. SDR 26
- ALL WATERMAIN SERVICES ARE 1" COPPER TYPE "K"
- ALL SANITARY SEWER WYE STATIONS ARE FROM DOWNSTREAM MH.
- MIN. GRADE FOR SANITARY SEWER SERVICE SHALL BE NO LESS THAN 2%
- A 10 GAUGE SOLID COPPER WIRE IS REQUIRED WITH ALL SANITARY & STORM SEWER LINES CONDUCTIVITY IS REQUIRED ON ALL TRACER WIRE
- TRACER WIRE ARE TO END OF STRUCTURES, AT FINISHED GRADE ON ALL SERVICES AND STUBS.
- CITY PERSONNEL SHALL OPERATE VALVES. AT FINISHED GRADE ON ALL SERVICES AND STUBS.
- ALL WATERMAIN VALVES NOT IN PAVED SURFACES SHALL HAVE BLUE CARSONITE MARKERS
- ALL SANITARY & STORM MANHOLES NOT IN PAVED SURFACES SHALL HAVE GREEN CARSONITE MARKERS

**WATER SERVICE NOTE:**  
LOTS 22 AND 23 OF BLOCK ONE, DIP WATER SERVICES UNDER STORM SEWER

**STANDARD DETAIL PLATE NOTE:**  
FOR STANDARD DETAIL PLATES, SEE SHEET C-5.0 AND CONSTRUCTION SPECIFICATIONS.



NO.	DATE	BY	REMARKS
3.	6/19/15	TPK	REVISIONS PER CITY COMMENTS
2.	6/12/15	TPK	REVISIONS PER CITY COMMENTS
1.	4/29/15	TPK	ADJUST LOT/BLOCK NUMBERS

DESIGNED BY: I HEREBY CERTIFY THAT THIS PLAN, SPECIFICATION, OR REPORT WAS PREPARED BY ME OR UNDER MY DIRECT SUPERVISION AND THAT I AM A DULY LICENSED PROFESSIONAL ENGINEER UNDER THE LAWS OF THE STATE OF MINNESOTA.  
RCH

DRAWN BY: TPK

CHECKED: RCH

DATE: 04-15-15

SIGNATURE: *Randall C. Hedlund* DATE: 06/19/15

RANDALL C. HEDLUND MN. LIC. NO. 19576

PREPARED BY:

**HEDLUND**  
Planning Engineering Surveying  
2005 PIN OAK DRIVE  
EAGAN, MINNESOTA 55122  
PHONE: (651) 405-6600

**HARVEST ESTATES**  
Ramsey, Minnesota  
GS Land LLC

Drawing: H:\2014 Projects\141029-LDD Utilities.dwg, UtilShets\141029-NorthRoad.dwg  
Layout: San-Water  
Date: Jun 22, 2015, 12:27pm

SCALE:  
Horiz: 1" = 50'  
Vert: 1" = 5'

BOOK: PAGE:

JOB NO. 141029

**SANITARY SEWER WATERMAIN**  
152nd Lane N.W.

SHEET 6 OF 13  
SHEET NUMBER C-3.1