

WOODLANDS

CITY OF RAMSEY
COUNTY OF ANOKA
SEC. 16, T. 32, R. 25

KNOW ALL PERSONS BY THESE PRESENTS: That US Home Corporation, a Delaware corporation, owner of the following described property:

Outlot A and Outlot E, SWEETBAY RIDGE, according to the recorded thereof, Anoka County, Minnesota.

Has caused the same to be surveyed and platted as WOODLANDS and does hereby dedicate to the public for public use the public ways and the drainage and utility easements as shown on this plat.

In witness whereof said US Home Corporation, a Delaware corporation, has caused these presents to be signed by its proper officer this _____ day of _____ 20____.

US Home Corporation

By _____
Jonathan A. Aune, Vice President

State of Minnesota
County of _____

This instrument was acknowledged before me on _____ by Jonathan A. Aune, as Vice President of US Home Corporation, a Delaware corporation, on behalf of the corporation.

Notary Public, _____ County, Minnesota
My commission expires _____

I Kyle J. Roddy do hereby certify that this plat was prepared by me or under my direct supervision; that I am a duly Licensed Land Surveyor in the State of Minnesota; that this plat is a correct representation of the boundary survey; that all mathematical data and labels are correctly designated on this plat; that all monuments depicted on this plat have been, or will be correctly set within one year; that all water boundaries and wet lands, as defined in Minnesota Statutes, Section 505.01, Subd. 3, as of the date of this certificate are shown and labeled on this plat; and all public ways are shown and labeled on this plat.

Dated this _____ day of _____ 20____.

Kyle J. Roddy, Licensed Land Surveyor
Minnesota License Number 42627

State of Minnesota
County of _____

This instrument was acknowledged before me on _____ by Kyle J. Roddy.

Notary Public, _____ County, Minnesota
My commission expires _____

CITY COUNCIL, CITY OF RAMSEY, MINNESOTA

This plat of WOODLANDS was approved and accepted by the City Council of the City of Ramsey, Minnesota at a regular meeting thereof held this _____ day of _____ 20____ and said plat is in compliance with the provisions of Minnesota Statutes, Section 505.03, Subd. 2.

CITY COUNCIL, CITY OF RAMSEY, MINNESOTA

By _____, Mayor By _____, City Clerk

ANOKA COUNTY SURVEYOR

I hereby certify that in accordance with Minnesota Statutes, Section 505.021, Subd. 11, this plat has been reviewed and approved this _____ day of _____ 20____.

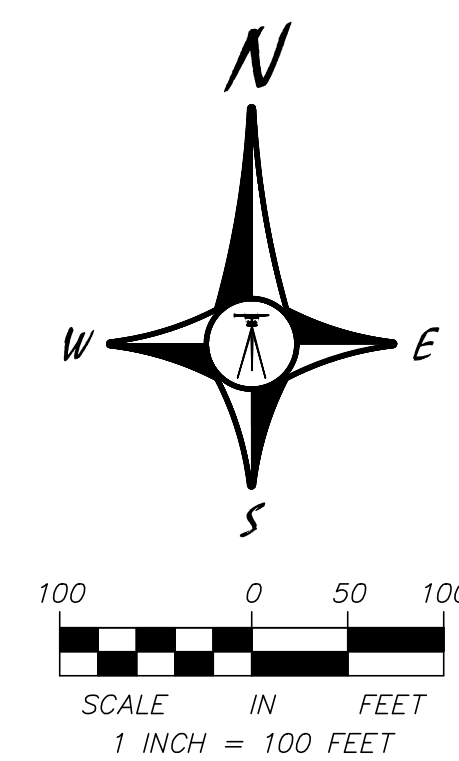
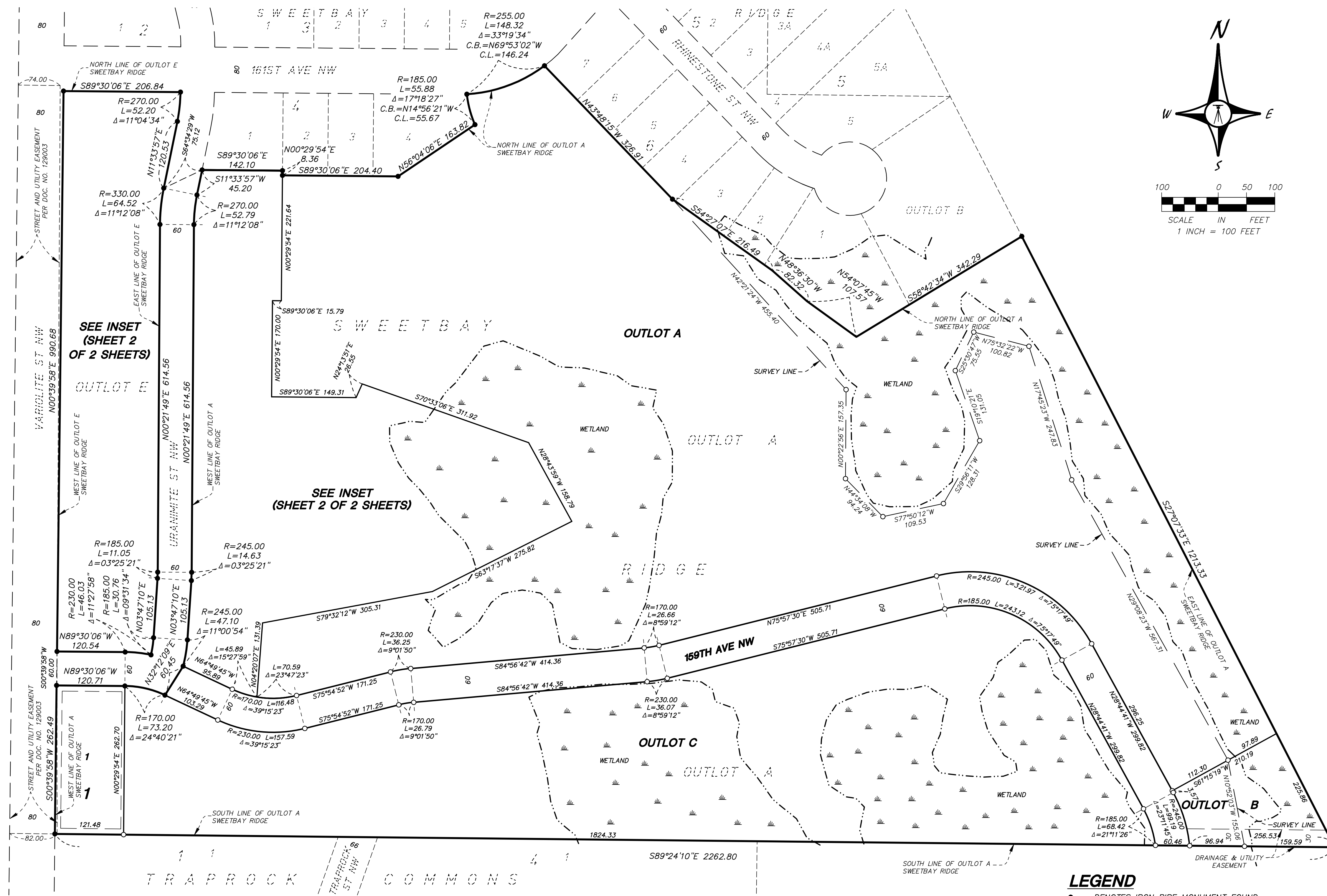
Larry D. Holm, Anoka County Surveyor

COUNTY AUDITOR/TREASURER

Pursuant to Minnesota Statutes, Section 505.021, Subd. 9, taxes payable in the year 20____ on the land hereinbefore described have been paid. Also, pursuant to Minnesota Statutes, Section 272.12, there are no delinquent taxes and transfer entered this _____ day of _____ 20____.

Property Tax Administrator

By _____, Deputy



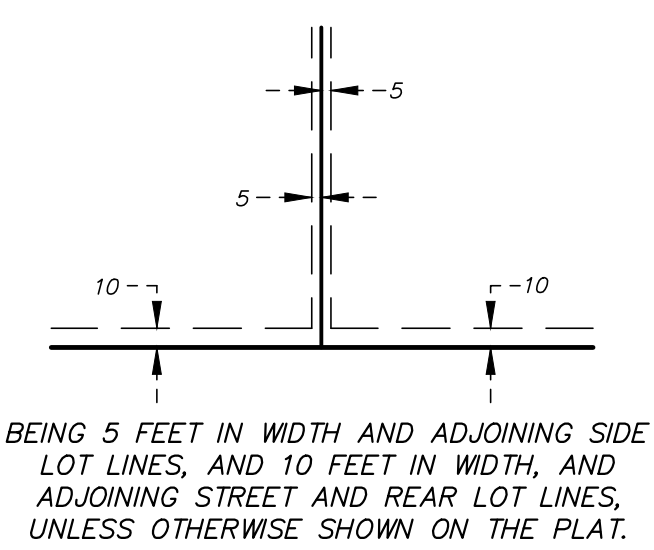
SEE INSET
(SHEET 2
OF 2 SHEETS)

SEE INSET
(SHEET 2 OF 2 SHEETS)

LEGEND
● DENOTES IRON PIPE MONUMENT FOUND
○ DENOTES SET 1/2" IRON PIPE WITH CAP MARKED R.L.S. 42627

BEARING NOTE
FOR THE PURPOSES OF THIS PLAT, THE SOUTH LINE OF OUTLOT A, SWEETBAY RIDGE, IS ASSUMED TO HAVE A BEARING OF SOUTH 89 DEGREES 24 MINUTES 10 SECONDS EAST.

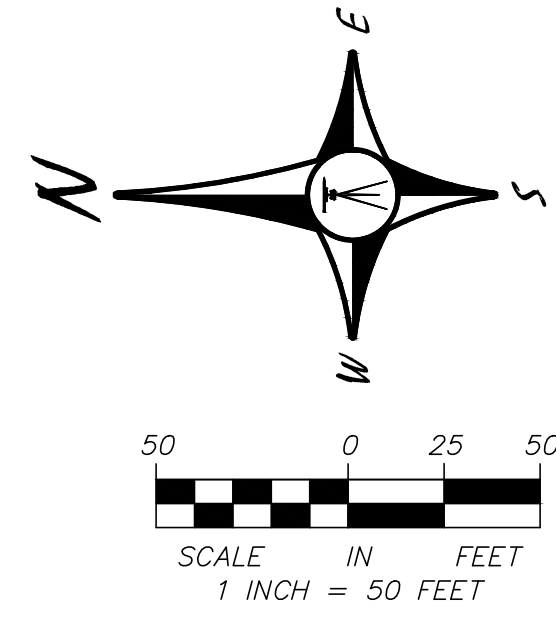
WETLAND NOTE
THE WETLANDS SHOWN HEREON WERE DELINEATED BY KJOLHAUG ENVIRONMENTAL, JULY 2014.



COUNTY RECORDER/REGISTRAR OF TITLES
County of Anoka, State of Minnesota
I hereby certify that this plat of WOODLANDS was filed in the office of the County Recorder/Registrar of Titles for public record on this _____ day of _____ 20____ at _____ o'clock _____ M. and was duly recorded in Book _____ Page _____, as Document Number _____
County Recorder/Registrar of Titles
By _____, Deputy

APA CONSULTING ENGINEERS & SURVEYORS

WOODLANDS INSET



LEGEND

- DENOTES IRON PIPE MONUMENT FOUND
- DENOTES SET 1/2" IRON PIPE WITH CAP MARKED R.L.S. 42627

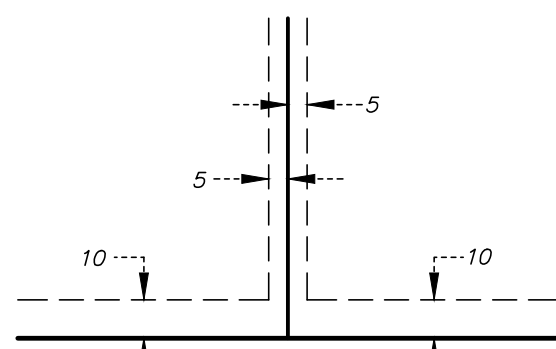
BEARING NOTE

FOR THE PURPOSES OF THIS PLAT, THE SOUTH LINE OF OUTLOT A, SWEETBAY RIDGE, IS ASSUMED TO HAVE A BEARING OF SOUTH 89 DEGREES 24 MINUTES 10 SECONDS EAST.

WETLAND NOTE

THE WETLANDS SHOWN HEREON WERE DELINEATED BY KJOLHAUG ENVIRONMENTAL, JULY 2014.

DRAINAGE AND UTILITY EASEMENTS ARE SHOWN THUS:



BEING 5 FEET IN WIDTH AND ADJOINING SIDE LOT LINES, AND 10 FEET IN WIDTH, AND ADJOINING STREET AND REAR LOT LINES, UNLESS OTHERWISE SHOWN ON THE PLAT.

