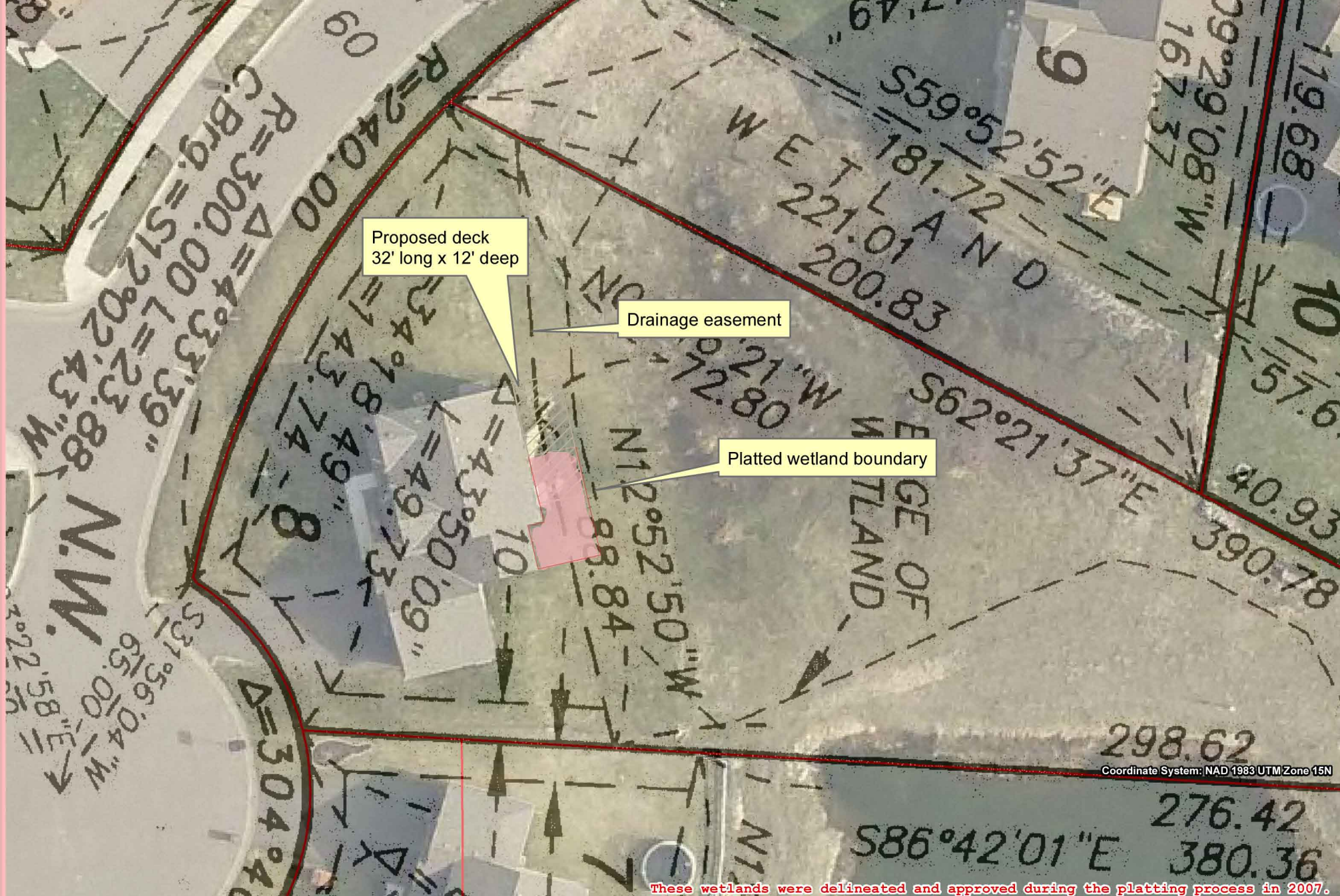


Date: 7/31/2015; X:\Wetlands\WICAL\RR\WMO\Public Assistance and Letters\Wetland Services\2015 Brandon, Sis\Brandon Sis.mxd



Coordinate System: NAD 1983 UTM Zone 15N

These wetlands were delineated and approved during the platting process in 2007.

Map Created:
7/31/2015



Disclaimer: The information provided on this map is for reference purposes only. The Anoka Conservation District does not guarantee the accuracy of the information contained herein and makes no representation or warranties, either express or implied, for the merchantability or fitness of the information provided on this map for a particular purpose.