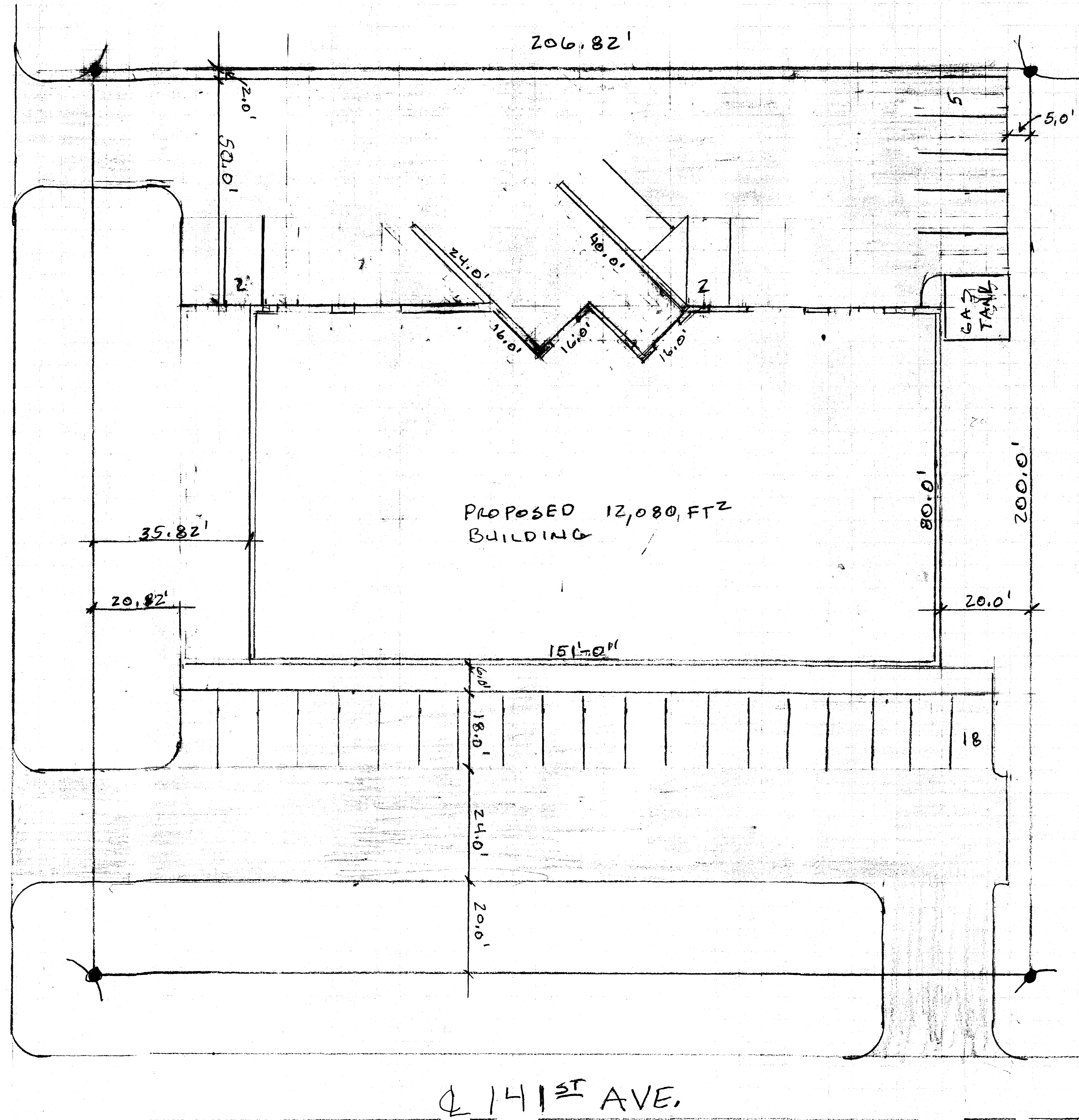
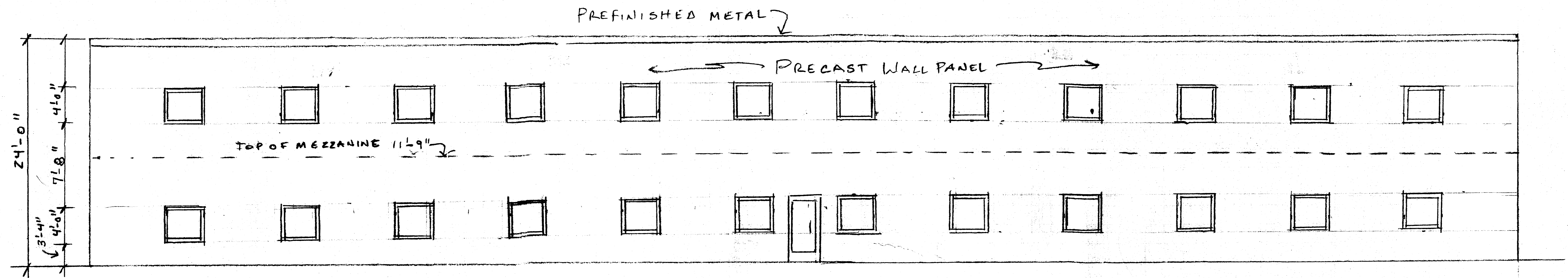


4 BASALT STREET

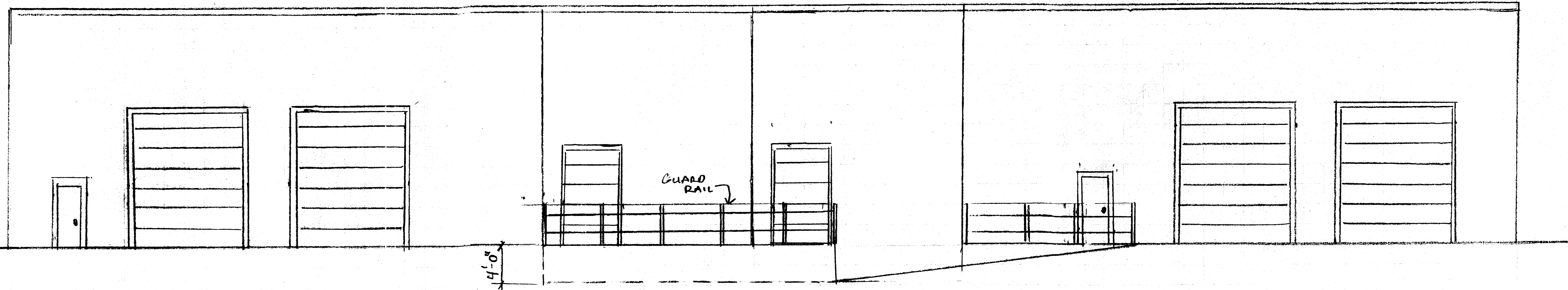


PROPOSED 13,024 FT² BLDG
FOR: 24 RESTORE
DRAWN BY: STONE CONST.
DATE: 1-17-15 P1 OF 3

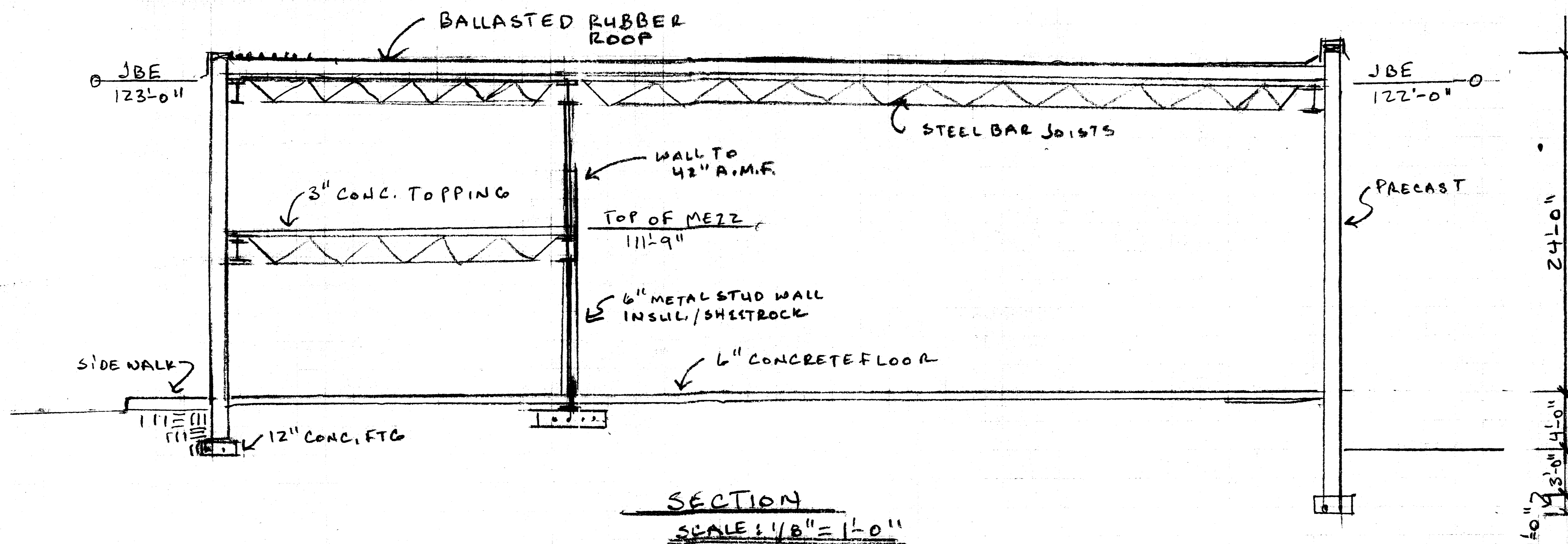
18'-0"
11'-4"



FRONT ELEVATION
SCALE 1/8" = 1'-0"



REAR ELEVATION
SCALE 1/8" = 1'-0"



SECTION
SCALE 1/8" = 1'-0"