

The National Citizen Survey™

Ramsey, MN

Technical Appendices

2014

Contents

Appendix A: Complete Survey Responses	1
Appendix B: Benchmark Comparisons	17
Appendix C: Detailed Survey Methods	28
Appendix D: Survey Materials	33

The National Citizen Survey™
© 2001-2014 National Research Center, Inc.

National Research Center, Inc.
2955 Valmont Road, Suite 300
Boulder, CO 80301
www.n-r-c.com • 303-444-7863

International City/County Management Association
777 North Capitol Street NE, Suite 500
Washington, DC 20002
www.icma.org • 202-289-ICMA

Appendix A: Complete Survey Responses

Responses excluding “don’t know”

The following pages contain a complete set of responses to each question on the survey, excluding the “don’t know” responses. The percent of respondents giving a particular response is shown followed by the number of respondents (denoted with “N=”).

Table 1: Question 1

Please rate each of the following aspects of quality of life in Ramsey:	Excellent		Good		Fair		Poor		Total	
Ramsey as a place to live	22%	N=95	60%	N=257	17%	N=74	0%	N=2	100%	N=427
Your neighborhood as a place to live	28%	N=117	57%	N=243	13%	N=57	2%	N=9	100%	N=427
Ramsey as a place to raise children	26%	N=101	57%	N=224	16%	N=64	1%	N=3	100%	N=392
Ramsey as a place to work	7%	N=18	35%	N=87	36%	N=91	22%	N=56	100%	N=251
Ramsey as a place to visit	7%	N=26	28%	N=109	45%	N=176	21%	N=82	100%	N=393
Ramsey as a place to retire	11%	N=38	40%	N=137	34%	N=115	15%	N=50	100%	N=341
The overall quality of life in Ramsey	14%	N=58	58%	N=248	28%	N=118	0%	N=0	100%	N=425

Table 2: Question 2

Please rate each of the following characteristics as they relate to Ramsey as a whole:	Excellent		Good		Fair		Poor		Total	
Overall feeling of safety in Ramsey	28%	N=120	62%	N=264	10%	N=41	1%	N=3	100%	N=428
Overall ease of getting to the places you usually have to visit	17%	N=74	50%	N=215	21%	N=91	11%	N=46	100%	N=427
Quality of overall natural environment in Ramsey	26%	N=111	57%	N=244	15%	N=65	1%	N=4	100%	N=425
Overall "built environment" of Ramsey (including overall design, buildings, parks and transportation systems)	8%	N=34	48%	N=201	33%	N=139	11%	N=46	100%	N=421
Health and wellness opportunities in Ramsey	15%	N=56	51%	N=195	28%	N=109	6%	N=23	100%	N=383
Overall opportunities for education and enrichment	9%	N=34	45%	N=162	36%	N=128	10%	N=36	100%	N=361
Overall economic health of Ramsey	5%	N=20	44%	N=161	42%	N=151	9%	N=31	100%	N=363
Sense of community	6%	N=24	40%	N=161	45%	N=182	10%	N=41	100%	N=407
Overall image or reputation of Ramsey	5%	N=21	46%	N=192	37%	N=155	12%	N=51	100%	N=419

Table 3: Question 3

Please indicate how likely or unlikely you are to do each of the following:	Very likely		Somewhat likely		Somewhat unlikely		Very unlikely		Total	
Recommend living in Ramsey to someone who asks	38%	N=160	44%	N=187	12%	N=52	6%	N=25	100%	N=424
Remain in Ramsey for the next five years	54%	N=225	31%	N=127	9%	N=36	7%	N=28	100%	N=416

Table 4: Question 4

Please rate how safe or unsafe you feel:	Very safe		Somewhat safe		Neither safe nor unsafe		Somewhat unsafe		Very unsafe		Total	
In your neighborhood during the day	81%	N=348	13%	N=56	4%	N=18	2%	N=7	0%	N=2	100%	N=430
In your neighborhood after dark	47%	N=203	39%	N=168	9%	N=38	4%	N=18	0%	N=2	100%	N=429
In Ramsey's downtown/commercial area during the day	76%	N=287	18%	N=68	6%	N=22	0%	N=1	0%	N=1	100%	N=380
In Ramsey's downtown/commercial areas after dark	41%	N=142	46%	N=161	10%	N=36	2%	N=8	0%	N=1	100%	N=348

The National Citizen Survey™

Table 5: Question 5

Please rate each of the following characteristics as they relate to Ramsey as a whole:	Excellent		Good		Fair		Poor		Total	
Traffic flow on major streets	8%	N=34	47%	N=201	30%	N=128	15%	N=64	100%	N=428
Ease of travel by car in Ramsey	16%	N=69	48%	N=206	26%	N=112	10%	N=42	100%	N=429
Ease of travel by bicycle in Ramsey	20%	N=69	46%	N=157	27%	N=91	7%	N=23	100%	N=339
Ease of walking in Ramsey	21%	N=82	50%	N=195	23%	N=92	6%	N=24	100%	N=394
Availability of paths and walking trails	26%	N=105	49%	N=200	19%	N=79	6%	N=23	100%	N=407
Cleanliness of Ramsey	25%	N=106	57%	N=243	16%	N=69	2%	N=8	100%	N=426
Overall appearance of Ramsey	17%	N=74	59%	N=253	20%	N=87	3%	N=13	100%	N=427
Public places where people want to spend time	13%	N=54	37%	N=150	41%	N=167	9%	N=35	100%	N=406
Variety of housing options	20%	N=79	55%	N=215	22%	N=85	3%	N=11	100%	N=391
Availability of affordable quality housing	18%	N=60	51%	N=173	27%	N=90	4%	N=14	100%	N=337
Fitness opportunities (including exercise classes and paths or trails, etc.)	15%	N=60	45%	N=173	33%	N=128	7%	N=26	100%	N=387
Recreational opportunities	14%	N=55	39%	N=147	36%	N=138	10%	N=40	100%	N=380
Overall condition of City maintained streets	9%	N=37	49%	N=206	32%	N=134	11%	N=47	100%	N=425

Table 6: Question 6

Please rate each of the following characteristics as they relate to Ramsey as a whole:	Excellent		Good		Fair		Poor		Total	
Availability of affordable quality child care/preschool	8%	N=14	61%	N=104	23%	N=39	8%	N=13	100%	N=170
K-12 education	15%	N=43	60%	N=171	21%	N=59	4%	N=10	100%	N=283
Adult educational opportunities	9%	N=23	46%	N=120	36%	N=94	10%	N=26	100%	N=263
Opportunities to attend cultural/arts/music activities	8%	N=26	33%	N=106	42%	N=137	17%	N=56	100%	N=325
Employment opportunities	2%	N=5	25%	N=68	48%	N=129	25%	N=68	100%	N=271
Shopping opportunities	2%	N=9	20%	N=84	33%	N=136	44%	N=184	100%	N=414
Cost of living in Ramsey	6%	N=24	44%	N=179	43%	N=178	7%	N=30	100%	N=412
Overall quality of business and service establishments in Ramsey	4%	N=16	45%	N=180	32%	N=128	20%	N=80	100%	N=405
Vibrant downtown/commercial area	3%	N=12	18%	N=73	42%	N=167	37%	N=145	100%	N=396
Overall quality of new development in Ramsey	6%	N=23	42%	N=161	36%	N=139	16%	N=61	100%	N=383
Opportunities to volunteer	7%	N=14	49%	N=102	35%	N=74	9%	N=19	100%	N=210
Opportunities to participate in community matters	8%	N=20	44%	N=112	39%	N=100	9%	N=22	100%	N=255

Table 7: Question 7

Please indicate whether or not you have done each of the following in the last 12 months.	No		Yes		Total	
Household member was a victim of a crime in Ramsey	94%	N=400	6%	N=24	100%	N=424
Reported a crime to the police in Ramsey	90%	N=379	10%	N=43	100%	N=423
Campaigned or advocated for an issue, cause or candidate	89%	N=373	11%	N=48	100%	N=421
Contacted the City of Ramsey (in-person, phone, email or web) for help or information	56%	N=235	44%	N=187	100%	N=421
Contacted Ramsey elected officials (in-person, phone, email or web) to express your opinion	89%	N=375	11%	N=46	100%	N=422

The National Citizen Survey™

Table 8: Question 8

In the last 12 months, about how many times, if at all, have you or other household members done each of the following in Ramsey?	2 times a week or more		2-4 times a month		Once a month or less		Not at all		Total	
Visited a neighborhood park or City park	20%	N=87	32%	N=137	31%	N=130	17%	N=70	100%	N=424
Attended a City-sponsored event	2%	N=7	6%	N=25	45%	N=192	47%	N=200	100%	N=423
Used rail or other public transportation instead of driving	7%	N=30	4%	N=16	27%	N=116	62%	N=263	100%	N=424
Walked or biked instead of driving	12%	N=50	18%	N=77	26%	N=109	44%	N=188	100%	N=424
Volunteered your time to some group/activity in Ramsey	1%	N=5	4%	N=19	16%	N=70	78%	N=330	100%	N=424

Table 9: Question 9

Thinking about local public meetings (of local elected officials like City Council or County Commissioners, advisory boards, town halls, HOA, neighborhood watch, etc.), in the last 12 months, about how many times, if at all, have you or other household members attended or watched a local public meeting?	2 times a week or more		2-4 times a month		Once a month or less		Not at all		Total	
Attended a local public meeting	0%	N=1	2%	N=7	12%	N=49	86%	N=366	100%	N=423
Watched (online or on television) a local public meeting	1%	N=5	4%	N=19	20%	N=86	74%	N=315	100%	N=425

Table 10: Question 10

Please rate the quality of each of the following services in Ramsey:	Excellent		Good		Fair		Poor		Total	
Police services	36%	N=133	50%	N=183	12%	N=45	2%	N=6	100%	N=368
Fire services	39%	N=115	53%	N=154	8%	N=22	1%	N=2	100%	N=293
Crime prevention	25%	N=72	55%	N=156	17%	N=50	2%	N=7	100%	N=285
Fire prevention and education	23%	N=57	60%	N=148	14%	N=35	2%	N=6	100%	N=246
Traffic enforcement	18%	N=66	50%	N=179	26%	N=92	6%	N=23	100%	N=360
Street repair	5%	N=21	40%	N=164	35%	N=143	21%	N=85	100%	N=414
Street cleaning	10%	N=39	48%	N=192	34%	N=138	9%	N=35	100%	N=403
Street lighting	9%	N=37	45%	N=186	31%	N=125	15%	N=60	100%	N=409
Snow removal	10%	N=43	45%	N=181	31%	N=124	14%	N=58	100%	N=406
Sidewalk maintenance	9%	N=25	53%	N=157	33%	N=98	6%	N=17	100%	N=296
Traffic signal timing	6%	N=24	36%	N=145	33%	N=133	25%	N=99	100%	N=402
Storm drainage	11%	N=37	62%	N=208	24%	N=79	4%	N=12	100%	N=336
Drinking water	20%	N=60	52%	N=155	24%	N=73	4%	N=11	100%	N=300
Sewer services	15%	N=40	66%	N=176	19%	N=49	0%	N=0	100%	N=265
City parks	21%	N=81	55%	N=216	22%	N=87	3%	N=11	100%	N=396
Recreation centers or facilities	13%	N=38	46%	N=139	26%	N=79	15%	N=44	100%	N=300
Land use, planning and zoning	7%	N=22	36%	N=113	35%	N=112	22%	N=70	100%	N=317
Code enforcement (weeds, abandoned buildings, etc.)	8%	N=24	32%	N=97	31%	N=94	29%	N=86	100%	N=301
Animal control	11%	N=31	49%	N=140	30%	N=84	10%	N=30	100%	N=286
Economic development	6%	N=20	37%	N=126	41%	N=138	16%	N=53	100%	N=336
Public information services	10%	N=31	48%	N=156	36%	N=116	6%	N=20	100%	N=323
Preservation of natural areas such as open space, farmlands and greenbelts	15%	N=50	54%	N=179	25%	N=82	6%	N=21	100%	N=333
Overall customer service by Ramsey employees (police, receptionists, planners, etc.)	25%	N=87	54%	N=192	18%	N=64	3%	N=12	100%	N=356
Trail maintenance	15%	N=53	52%	N=176	27%	N=93	6%	N=19	100%	N=341

The National Citizen Survey™

Table 11: Question 11

Overall, how would you rate the quality of the services provided by the following?	Excellent		Good		Fair		Poor		Total	
The City of Ramsey	14%	N=53	60%	N=227	25%	N=95	2%	N=6	100%	N=381

Table 12: Question 12

Please rate the following categories of Ramsey government performance:	Excellent		Good		Fair		Poor		Total	
The value of services for the taxes paid to Ramsey	6%	N=23	37%	N=139	43%	N=159	13%	N=49	100%	N=370
The overall direction that Ramsey is taking	7%	N=26	41%	N=153	36%	N=134	15%	N=57	100%	N=369
The job Ramsey government does at welcoming citizen involvement	8%	N=22	40%	N=117	36%	N=106	16%	N=46	100%	N=292
Overall confidence in Ramsey government	6%	N=20	37%	N=127	37%	N=126	21%	N=71	100%	N=344
Generally acting in the best interest of the community	7%	N=23	36%	N=126	37%	N=127	20%	N=70	100%	N=346
Being honest	9%	N=26	38%	N=114	36%	N=106	17%	N=51	100%	N=297
Treating all residents fairly	9%	N=25	44%	N=126	33%	N=96	14%	N=41	100%	N=289
Development and success of a strategic action plan	8%	N=23	31%	N=87	35%	N=97	26%	N=74	100%	N=281

Table 13: Question 13

Please rate how important, if at all, you think it is for the Ramsey community to focus on each of the following in the coming two years:	Essential		Very important		Somewhat important		Not at all important		Total	
Overall feeling of safety in Ramsey	51%	N=216	35%	N=150	13%	N=53	1%	N=4	100%	N=423
Overall ease of getting to the places you usually have to visit	33%	N=141	48%	N=204	17%	N=72	1%	N=6	100%	N=423
Quality of overall natural environment in Ramsey	29%	N=122	44%	N=188	24%	N=100	3%	N=14	100%	N=423
Overall "built environment" of Ramsey (including overall design, buildings, parks and transportation systems)	28%	N=118	45%	N=189	23%	N=97	4%	N=17	100%	N=422
Health and wellness opportunities in Ramsey	19%	N=81	42%	N=177	33%	N=139	6%	N=24	100%	N=421
Overall opportunities for education and enrichment	21%	N=90	43%	N=180	30%	N=125	6%	N=25	100%	N=419
Overall economic health of Ramsey	35%	N=147	53%	N=224	11%	N=45	1%	N=5	100%	N=422
Sense of community	21%	N=90	48%	N=204	27%	N=113	3%	N=14	100%	N=421

Table 14: Question 14

To what extent are each of the following a source of information for you about Ramsey city government and its activities?	Major source		Moderate source		Minor source		Not a source		Total	
City newsletter (Ramsey Resident)	55%	N=236	28%	N=122	10%	N=44	6%	N=27	100%	N=428
Local newspaper	11%	N=46	32%	N=135	24%	N=101	34%	N=146	100%	N=428
City website (www.cityoframsey.com)	15%	N=64	31%	N=133	29%	N=122	25%	N=104	100%	N=423
Word-of-mouth	15%	N=64	35%	N=147	31%	N=132	19%	N=80	100%	N=424
Cable television (QCTV)	5%	N=20	16%	N=66	22%	N=94	57%	N=238	100%	N=418
City employees	6%	N=27	15%	N=64	29%	N=121	50%	N=209	100%	N=421
Public meetings	4%	N=18	17%	N=73	27%	N=116	51%	N=216	100%	N=423
City social media (Facebook)	10%	N=41	13%	N=56	20%	N=84	57%	N=240	100%	N=422

The National Citizen Survey™

Table 15: Question 15

Please rate the quality of each event listed below:	Excellent		Good		Fair		Poor		Total	
Happy Days Festival	32%	N=81	52%	N=129	13%	N=34	3%	N=7	100%	N=251
Pet Clinics	24%	N=39	56%	N=90	19%	N=30	2%	N=3	100%	N=161
Kids Safety Camp	39%	N=43	54%	N=60	7%	N=8	0%	N=0	100%	N=110
The Draw Music in the Park Series	36%	N=76	51%	N=107	10%	N=21	3%	N=6	100%	N=210
Spring/Fall recycling events	28%	N=72	55%	N=143	13%	N=35	4%	N=10	100%	N=261
Spring Business Expo	20%	N=27	49%	N=67	24%	N=33	6%	N=9	100%	N=136
Annual Nite to Unite event	26%	N=55	39%	N=82	23%	N=49	12%	N=25	100%	N=211

Table 16: Question 16

Ramsey's hometown festival, Happy Days, is organized by the volunteer Happy Days Committee. To what extent do you agree or disagree with each of the following statements about the event?	Strongly agree		Somewhat agree		Somewhat disagree		Strongly disagree		Total	
I like the name "Happy Days Festival"	33%	N=132	42%	N=167	14%	N=55	10%	N=39	100%	N=393
The name "Happy Days Festival" should be changed	18%	N=69	19%	N=70	30%	N=114	33%	N=126	100%	N=380

Table 17: Question 17

The City is developing a long-term street reconstruction program for maintaining over 174 miles of public streets throughout Ramsey which will require a reliable funding source. Please indicate to what extent you would support or oppose each of the following funding options for this purpose:	Strongly support		Somewhat support		Somewhat oppose		Strongly oppose		Total	
Property tax increases	3%	N=13	26%	N=102	20%	N=79	51%	N=200	100%	N=393
Special assessments from benefitting properties to re-pay the City for 20% or more of applicable project costs, typically over 5 to 15 years	10%	N=38	30%	N=111	23%	N=86	37%	N=137	100%	N=373
Electric and/or gas utility fee increases, approximately \$8 per utility, per month	6%	N=26	27%	N=109	16%	N=66	50%	N=204	100%	N=405

Table 18: Question D1

How often, if at all, do you do each of the following, considering all of the times you could?	Never		Rarely		Sometimes		Usually		Always		Total	
Recycle at home	2%	N=8	3%	N=12	3%	N=11	14%	N=57	79%	N=333	100%	N=422
Purchase goods or services from a business located in Ramsey	0%	N=1	4%	N=18	47%	N=196	36%	N=151	13%	N=55	100%	N=421
Vote in local elections	8%	N=36	8%	N=34	13%	N=53	32%	N=133	39%	N=165	100%	N=420

Table 19: Question D2

Would you say that in general your health is:	Percent		Number	
Excellent	23%		N=95	
Very good	49%		N=205	
Good	25%		N=106	
Fair	3%		N=14	
Poor	0%		N=2	
Total	100%		N=422	

The National Citizen Survey™

Table 20: Question D3

What impact, if any, do you think the economy will have on your family income in the next 6 months? Do you think the impact will be	Percent	Number
Very positive	3%	N=11
Somewhat positive	26%	N=111
Neutral	54%	N=227
Somewhat negative	14%	N=61
Very negative	2%	N=10
Total	100%	N=420

Table 21: Question D4

What is your employment status?	Percent	Number
Working full time for pay	71%	N=298
Working part time for pay	9%	N=38
Unemployed, looking for paid work	2%	N=8
Unemployed, not looking for paid work	3%	N=14
Fully retired	15%	N=61
Total	100%	N=419

Table 22: Question D5

Do you work inside the boundaries of Ramsey?	Percent	Number
Yes, outside the home	14%	N=59
Yes, from home	6%	N=23
No	80%	N=332
Total	100%	N=414

Table 23: Question D6

How many years have you lived in Ramsey?	Percent	Number
Less than 2 years	13%	N=55
2 to 5 years	16%	N=68
6 to 10 years	17%	N=74
11 to 20 years	22%	N=94
More than 20 years	31%	N=132
Total	100%	N=423

Table 24: Question D7

Which best describes the building you live in?	Percent	Number
One family house detached from any other houses	82%	N=346
Building with two or more homes (duplex, townhome, apartment or condominium)	18%	N=75
Mobile home	0%	N=0
Other	0%	N=1
Total	100%	N=422

The National Citizen Survey™

Table 25: Question D8

Is this house, apartment or mobile home...	Percent	Number
Rented	9%	N=37
Owned	91%	N=384
Total	100%	N=421

Table 26: Question D9

About how much is your monthly housing cost for the place you live (including rent, mortgage payment, property tax, property insurance and homeowners' association (HOA) fees)?	Percent	Number
Less than \$300 per month	3%	N=11
\$300 to \$599 per month	6%	N=25
\$600 to \$999 per month	15%	N=60
\$1,000 to \$1,499 per month	38%	N=155
\$1,500 to \$2,499 per month	32%	N=129
\$2,500 or more per month	7%	N=28
Total	100%	N=408

Table 27: Question D10

Do any children 17 or under live in your household?	Percent	Number
No	56%	N=236
Yes	44%	N=187
Total	100%	N=422

Table 28: Question D11

Are you or any other members of your household aged 65 or older?	Percent	Number
No	84%	N=355
Yes	16%	N=69
Total	100%	N=424

Table 29: Question D12

How much do you anticipate your household's total income before taxes will be for the current year? (Please include in your total income money from all sources for all persons living in your household.)	Percent	Number
Less than \$25,000	2%	N=9
\$25,000 to \$49,999	16%	N=63
\$50,000 to \$99,999	44%	N=177
\$100,000 to \$149,999	27%	N=106
\$150,000 or more	11%	N=44
Total	100%	N=398

Table 30: Question D13

Are you Spanish, Hispanic or Latino?	Percent	Number
No, not Spanish, Hispanic or Latino	99%	N=416
Yes, I consider myself to be Spanish, Hispanic or Latino	1%	N=2
Total	100%	N=418

The National Citizen Survey™

Table 31: Question D14

What is your race? (Mark one or more races to indicate what race(s) you consider yourself to be.)	Percent	Number
American Indian or Alaskan Native	0%	N=0
Asian, Asian Indian or Pacific Islander	1%	N=3
Black or African American	3%	N=11
White	95%	N=400
Other	3%	N=14

Total may exceed 100% as respondents could select more than one option.

Table 32: Question D15

In which category is your age?	Percent	Number
18 to 24 years	2%	N=10
25 to 34 years	27%	N=114
35 to 44 years	18%	N=76
45 to 54 years	26%	N=110
55 to 64 years	12%	N=52
65 to 74 years	9%	N=39
75 years or older	5%	N=21
Total	100%	N=422

Table 33: Question D16

What is your sex?	Percent	Number
Female	50%	N=208
Male	50%	N=210
Total	100%	N=418

Table 34: Question D17

Do you consider a cell phone or landline your primary telephone number?	Percent	Number
Cell	57%	N=239
Land line	26%	N=111
Both	17%	N=71
Total	100%	N=421

Responses including “don’t know”

The following pages contain a complete set of responses to each question on the survey, including the “don’t know” responses. The percent of respondents giving a particular response is shown followed by the number of respondents (denoted with “N=”).

Table 35: Question 1

Please rate each of the following aspects of quality of life in Ramsey:	Excellent		Good		Fair		Poor		Don't know		Total	
Ramsey as a place to live	22%	N=95	60%	N=257	17%	N=74	0%	N=2	0%	N=0	100%	N=427
Your neighborhood as a place to live	27%	N=117	57%	N=243	13%	N=57	2%	N=9	0%	N=1	100%	N=427
Ramsey as a place to raise children	24%	N=101	53%	N=224	15%	N=64	1%	N=3	8%	N=33	100%	N=425
Ramsey as a place to work	4%	N=18	21%	N=87	22%	N=91	13%	N=56	40%	N=170	100%	N=421
Ramsey as a place to visit	6%	N=26	26%	N=109	42%	N=176	19%	N=82	7%	N=29	100%	N=422
Ramsey as a place to retire	9%	N=38	33%	N=137	27%	N=115	12%	N=50	19%	N=81	100%	N=421
The overall quality of life in Ramsey	14%	N=58	58%	N=248	28%	N=118	0%	N=0	0%	N=0	100%	N=425

Table 36: Question 2

Please rate each of the following characteristics as they relate to Ramsey as a whole:	Excellent		Good		Fair		Poor		Don't know		Total	
Overall feeling of safety in Ramsey	28%	N=120	61%	N=264	9%	N=41	1%	N=3	0%	N=1	100%	N=429
Overall ease of getting to the places you usually have to visit	17%	N=74	50%	N=215	21%	N=91	11%	N=46	0%	N=1	100%	N=428
Quality of overall natural environment in Ramsey	26%	N=111	57%	N=244	15%	N=65	1%	N=4	0%	N=2	100%	N=427
Overall "built environment" of Ramsey (including overall design, buildings, parks and transportation systems)	8%	N=34	47%	N=201	33%	N=139	11%	N=46	1%	N=4	100%	N=424
Health and wellness opportunities in Ramsey	13%	N=56	46%	N=195	26%	N=109	5%	N=23	10%	N=42	100%	N=424
Overall opportunities for education and enrichment	8%	N=34	38%	N=162	30%	N=128	8%	N=36	15%	N=65	100%	N=426
Overall economic health of Ramsey	5%	N=20	38%	N=161	35%	N=151	7%	N=31	15%	N=62	100%	N=425
Sense of community	6%	N=24	38%	N=161	43%	N=182	10%	N=41	4%	N=19	100%	N=426
Overall image or reputation of Ramsey	5%	N=21	45%	N=192	37%	N=155	12%	N=51	1%	N=6	100%	N=425

Table 37: Question 3

Please indicate how likely or unlikely you are to do each of the following:	Very likely		Somewhat likely		Somewhat unlikely		Very unlikely		Don't know		Total	
Recommend living in Ramsey to someone who asks	37%	N=160	44%	N=187	12%	N=52	6%	N=25	1%	N=5	100%	N=429
Remain in Ramsey for the next five years	52%	N=225	30%	N=127	8%	N=36	7%	N=28	3%	N=12	100%	N=428

Table 38: Question 4

Please rate how safe or unsafe you feel:	Very safe		Somewhat safe		Neither safe nor unsafe		Somewhat unsafe		Very unsafe		Don't know		Total	
In your neighborhood during the day	81%	N=348	13%	N=56	4%	N=18	2%	N=7	0%	N=2	0%	N=0	100%	N=430
In your neighborhood after dark	47%	N=203	39%	N=168	9%	N=38	4%	N=18	0%	N=2	0%	N=0	100%	N=429
In Ramsey's downtown/commercial area during the day	68%	N=287	16%	N=68	5%	N=22	0%	N=1	0%	N=1	11%	N=45	100%	N=425
In Ramsey's downtown/commercial areas after dark	33%	N=142	38%	N=161	8%	N=36	2%	N=8	0%	N=1	19%	N=81	100%	N=429

The National Citizen Survey™

Table 39: Question 5

Please rate each of the following characteristics as they relate to Ramsey as a whole:	Excellent		Good		Fair		Poor		Don't know		Total	
Traffic flow on major streets	8%	N=34	47%	N=201	30%	N=128	15%	N=64	0%	N=1	100%	N=428
Ease of travel by car in Ramsey	16%	N=69	48%	N=206	26%	N=112	10%	N=42	0%	N=0	100%	N=429
Ease of travel by bicycle in Ramsey	16%	N=69	37%	N=157	21%	N=91	5%	N=23	20%	N=87	100%	N=426
Ease of walking in Ramsey	19%	N=82	46%	N=195	22%	N=92	6%	N=24	8%	N=33	100%	N=427
Availability of paths and walking trails	25%	N=105	47%	N=200	18%	N=79	5%	N=23	5%	N=21	100%	N=428
Cleanliness of Ramsey	25%	N=106	57%	N=243	16%	N=69	2%	N=8	0%	N=1	100%	N=427
Overall appearance of Ramsey	17%	N=74	59%	N=253	20%	N=87	3%	N=13	0%	N=1	100%	N=428
Public places where people want to spend time	13%	N=54	35%	N=150	39%	N=167	8%	N=35	5%	N=22	100%	N=428
Variety of housing options	19%	N=79	50%	N=215	20%	N=85	3%	N=11	9%	N=37	100%	N=428
Availability of affordable quality housing	14%	N=60	40%	N=173	21%	N=90	3%	N=14	21%	N=90	100%	N=427
Fitness opportunities (including exercise classes and paths or trails, etc.)	14%	N=60	40%	N=173	30%	N=128	6%	N=26	10%	N=41	100%	N=428
Recreational opportunities	13%	N=55	35%	N=147	32%	N=138	9%	N=40	11%	N=45	100%	N=425
Overall condition of City maintained streets	9%	N=37	48%	N=206	32%	N=134	11%	N=47	0%	N=1	100%	N=426

Table 40: Question 6

Please rate each of the following characteristics as they relate to Ramsey as a whole:	Excellent		Good		Fair		Poor		Don't know		Total	
Availability of affordable quality child care/preschool	3%	N=14	25%	N=104	9%	N=39	3%	N=13	59%	N=249	100%	N=419
K-12 education	10%	N=43	41%	N=171	14%	N=59	2%	N=10	32%	N=135	100%	N=418
Adult educational opportunities	5%	N=23	29%	N=120	23%	N=94	6%	N=26	37%	N=152	100%	N=415
Opportunities to attend cultural/arts/music activities	6%	N=26	25%	N=106	33%	N=137	13%	N=56	22%	N=93	100%	N=418
Employment opportunities	1%	N=5	16%	N=68	31%	N=129	16%	N=68	35%	N=144	100%	N=415
Shopping opportunities	2%	N=9	20%	N=84	33%	N=136	44%	N=184	1%	N=3	100%	N=418
Cost of living in Ramsey	6%	N=24	43%	N=179	43%	N=178	7%	N=30	2%	N=7	100%	N=418
Overall quality of business and service establishments in Ramsey	4%	N=16	43%	N=180	31%	N=128	19%	N=80	4%	N=15	100%	N=420
Vibrant downtown/commercial area	3%	N=12	17%	N=73	40%	N=167	35%	N=145	5%	N=22	100%	N=418
Overall quality of new development in Ramsey	5%	N=23	39%	N=161	33%	N=139	15%	N=61	8%	N=34	100%	N=417
Opportunities to volunteer	3%	N=14	25%	N=102	18%	N=74	5%	N=19	50%	N=207	100%	N=417
Opportunities to participate in community matters	5%	N=20	27%	N=112	24%	N=100	5%	N=22	39%	N=163	100%	N=418

Table 41: Question 7

Please indicate whether or not you have done each of the following in the last 12 months.	No		Yes		Total	
Household member was a victim of a crime in Ramsey	94%	N=400	6%	N=24	100%	N=424
Reported a crime to the police in Ramsey	90%	N=379	10%	N=43	100%	N=423
Campaigned or advocated for an issue, cause or candidate	89%	N=373	11%	N=48	100%	N=421
Contacted the City of Ramsey (in-person, phone, email or web) for help or information	56%	N=235	44%	N=187	100%	N=421
Contacted Ramsey elected officials (in-person, phone, email or web) to express your opinion	89%	N=375	11%	N=46	100%	N=422

The National Citizen Survey™

Table 42: Question 8

In the last 12 months, about how many times, if at all, have you or other household members done each of the following in Ramsey?	2 times a week or more		2-4 times a month		Once a month or less		Not at all		Total	
Visited a neighborhood park or City park	20%	N=87	32%	N=137	31%	N=130	17%	N=70	100%	N=424
Attended a City-sponsored event	2%	N=7	6%	N=25	45%	N=192	47%	N=200	100%	N=423
Used rail or other public transportation instead of driving	7%	N=30	4%	N=16	27%	N=116	62%	N=263	100%	N=424
Walked or biked instead of driving	12%	N=50	18%	N=77	26%	N=109	44%	N=188	100%	N=424
Volunteered your time to some group/activity in Ramsey	1%	N=5	4%	N=19	16%	N=70	78%	N=330	100%	N=424

Table 43: Question 9

Thinking about local public meetings (of local elected officials like City Council or County Commissioners, advisory boards, town halls, HOA, neighborhood watch, etc.), in the last 12 months, about how many times, if at all, have you or other household members attended or watched a local public meeting?	2 times a week or more		2-4 times a month		Once a month or less		Not at all		Total	
Attended a local public meeting	0%	N=1	2%	N=7	12%	N=49	86%	N=366	100%	N=423
Watched (online or on television) a local public meeting	1%	N=5	4%	N=19	20%	N=86	74%	N=315	100%	N=425

Table 44: Question 10

Please rate the quality of each of the following services in Ramsey:	Excellent		Good		Fair		Poor		Don't know		Total	
Police services	32%	N=133	44%	N=183	11%	N=45	1%	N=6	12%	N=51	100%	N=418
Fire services	28%	N=115	37%	N=154	5%	N=22	0%	N=2	30%	N=124	100%	N=417
Crime prevention	17%	N=72	38%	N=156	12%	N=50	2%	N=7	31%	N=130	100%	N=415
Fire prevention and education	14%	N=57	36%	N=148	8%	N=35	1%	N=6	41%	N=168	100%	N=414
Traffic enforcement	16%	N=66	43%	N=179	22%	N=92	6%	N=23	13%	N=55	100%	N=416
Street repair	5%	N=21	39%	N=164	34%	N=143	20%	N=85	2%	N=7	100%	N=421
Street cleaning	9%	N=39	46%	N=192	33%	N=138	8%	N=35	4%	N=16	100%	N=419
Street lighting	9%	N=37	45%	N=186	30%	N=125	15%	N=60	2%	N=8	100%	N=417
Snow removal	10%	N=43	43%	N=181	30%	N=124	14%	N=58	3%	N=13	100%	N=419
Sidewalk maintenance	6%	N=25	38%	N=157	24%	N=98	4%	N=17	29%	N=120	100%	N=416
Traffic signal timing	6%	N=24	35%	N=145	32%	N=133	24%	N=99	4%	N=16	100%	N=418
Storm drainage	9%	N=37	50%	N=208	19%	N=79	3%	N=12	19%	N=81	100%	N=417
Drinking water	14%	N=60	37%	N=155	17%	N=73	3%	N=11	28%	N=119	100%	N=419
Sewer services	10%	N=40	42%	N=176	12%	N=49	0%	N=0	36%	N=150	100%	N=416
City parks	19%	N=81	51%	N=216	21%	N=87	3%	N=11	6%	N=26	100%	N=421
Recreation centers or facilities	9%	N=38	33%	N=139	19%	N=79	11%	N=44	28%	N=117	100%	N=417
Land use, planning and zoning	5%	N=22	27%	N=113	27%	N=112	17%	N=70	24%	N=98	100%	N=415
Code enforcement (weeds, abandoned buildings, etc.)	6%	N=24	23%	N=97	23%	N=94	21%	N=86	27%	N=114	100%	N=415
Animal control	8%	N=31	34%	N=140	20%	N=84	7%	N=30	31%	N=130	100%	N=415
Economic development	5%	N=20	30%	N=126	33%	N=138	13%	N=53	19%	N=79	100%	N=415
Public information services	7%	N=31	38%	N=156	28%	N=116	5%	N=20	22%	N=93	100%	N=415
Preservation of natural areas such as open space, farmlands and greenbelts	12%	N=50	43%	N=179	20%	N=82	5%	N=21	20%	N=83	100%	N=415
Overall customer service by Ramsey employees (police, receptionists, planners, etc.)	21%	N=87	46%	N=192	15%	N=64	3%	N=12	15%	N=62	100%	N=417
Trail maintenance	13%	N=53	42%	N=176	22%	N=93	5%	N=19	18%	N=75	100%	N=416

The National Citizen Survey™

Table 45: Question 11

Overall, how would you rate the quality of the services provided by the following?	Excellent		Good		Fair		Poor		Don't know		Total	
The City of Ramsey	13%	N=53	56%	N=227	23%	N=95	1%	N=6	6%	N=25	100%	N=406

Table 46: Question 12

Please rate the following categories of Ramsey government performance:	Excellent		Good		Fair		Poor		Don't know		Total	
The value of services for the taxes paid to Ramsey	6%	N=23	33%	N=139	38%	N=159	12%	N=49	12%	N=49	100%	N=418
The overall direction that Ramsey is taking	6%	N=26	37%	N=153	32%	N=134	14%	N=57	12%	N=50	100%	N=418
The job Ramsey government does at welcoming citizen involvement	5%	N=22	28%	N=117	25%	N=106	11%	N=46	30%	N=126	100%	N=417
Overall confidence in Ramsey government	5%	N=20	30%	N=127	30%	N=126	17%	N=71	18%	N=73	100%	N=417
Generally acting in the best interest of the community	6%	N=23	30%	N=126	31%	N=127	17%	N=70	17%	N=70	100%	N=417
Being honest	6%	N=26	27%	N=114	26%	N=106	12%	N=51	29%	N=119	100%	N=416
Treating all residents fairly	6%	N=25	30%	N=126	23%	N=96	10%	N=41	31%	N=129	100%	N=417
Development and success of a strategic action plan	5%	N=23	21%	N=87	23%	N=97	18%	N=74	32%	N=135	100%	N=416

Table 47: Question 13

Please rate how important, if at all, you think it is for the Ramsey community to focus on each of the following in the coming two years:	Essential		Very important		Somewhat important		Not at all important		Total	
Overall feeling of safety in Ramsey	51%	N=216	35%	N=150	13%	N=53	1%	N=4	100%	N=423
Overall ease of getting to the places you usually have to visit	33%	N=141	48%	N=204	17%	N=72	1%	N=6	100%	N=423
Quality of overall natural environment in Ramsey	29%	N=122	44%	N=188	24%	N=100	3%	N=14	100%	N=423
Overall "built environment" of Ramsey (including overall design, buildings, parks and transportation systems)	28%	N=118	45%	N=189	23%	N=97	4%	N=17	100%	N=422
Health and wellness opportunities in Ramsey	19%	N=81	42%	N=177	33%	N=139	6%	N=24	100%	N=421
Overall opportunities for education and enrichment	21%	N=90	43%	N=180	30%	N=125	6%	N=25	100%	N=419
Overall economic health of Ramsey	35%	N=147	53%	N=224	11%	N=45	1%	N=5	100%	N=422
Sense of community	21%	N=90	48%	N=204	27%	N=113	3%	N=14	100%	N=421

Table 48: Question 14

To what extent are each of the following a source of information for you about Ramsey city government and its activities?	Major source		Moderate source		Minor source		Not a source		Total	
City newsletter (Ramsey Resident)	55%	N=236	28%	N=122	10%	N=44	6%	N=27	100%	N=428
Local newspaper	11%	N=46	32%	N=135	24%	N=101	34%	N=146	100%	N=428
City website (www.cityoframsey.com)	15%	N=64	31%	N=133	29%	N=122	25%	N=104	100%	N=423
Word-of-mouth	15%	N=64	35%	N=147	31%	N=132	19%	N=80	100%	N=424
Cable television (QCTV)	5%	N=20	16%	N=66	22%	N=94	57%	N=238	100%	N=418
City employees	6%	N=27	15%	N=64	29%	N=121	50%	N=209	100%	N=421
Public meetings	4%	N=18	17%	N=73	27%	N=116	51%	N=216	100%	N=423
City social media (Facebook)	10%	N=41	13%	N=56	20%	N=84	57%	N=240	100%	N=422

The National Citizen Survey™

Table 49: Question 15

Please rate the quality of each event listed below:	Excellent		Good		Fair		Poor		Don't know/don't attend		Total	
Happy Days Festival	19%	N=81	30%	N=129	8%	N=34	2%	N=7	41%	N=176	100%	N=426
Pet Clinics	9%	N=39	21%	N=90	7%	N=30	1%	N=3	62%	N=265	100%	N=426
Kids Safety Camp	10%	N=43	14%	N=60	2%	N=8	0%	N=0	74%	N=313	100%	N=423
The Draw Music in the Park Series	18%	N=76	25%	N=107	5%	N=21	1%	N=6	50%	N=213	100%	N=424
Spring/Fall recycling events	17%	N=72	34%	N=143	8%	N=35	2%	N=10	39%	N=166	100%	N=426
Spring Business Expo	6%	N=27	16%	N=67	8%	N=33	2%	N=9	68%	N=286	100%	N=422
Annual Nite to Unite event	13%	N=55	19%	N=82	12%	N=49	6%	N=25	50%	N=214	100%	N=425

Table 50: Question 16

Ramsey's hometown festival, Happy Days, is organized by the volunteer Happy Days Committee. To what extent do you agree or disagree with each of the following statements about the event?	Strongly agree		Somewhat agree		Somewhat disagree		Strongly disagree		Total	
I like the name "Happy Days Festival"	33%	N=132	42%	N=167	14%	N=55	10%	N=39	100%	N=393
The name "Happy Days Festival" should be changed	18%	N=69	19%	N=70	30%	N=114	33%	N=126	100%	N=380

Table 51: Question 17

The City is developing a long-term street reconstruction program for maintaining over 174 miles of public streets throughout Ramsey which will require a reliable funding source. Please indicate to what extent you would support or oppose each of the following funding options for this purpose:	Strongly support		Somewhat support		Somewhat oppose		Strongly oppose		Don't know		Total	
Property tax increases	3%	N=13	24%	N=102	19%	N=79	48%	N=200	6%	N=27	100%	N=420
Special assessments from benefitting properties to re-pay the City for 20% or more of applicable project costs, typically over 5 to 15 years	9%	N=38	27%	N=111	20%	N=86	33%	N=137	11%	N=46	100%	N=419
Electric and/or gas utility fee increases, approximately \$8 per utility, per month	6%	N=26	26%	N=109	16%	N=66	49%	N=204	4%	N=16	100%	N=421

Table 52: Question D1

How often, if at all, do you do each of the following, considering all of the times you could?	Never		Rarely		Sometimes		Usually		Always		Total	
Recycle at home	2%	N=8	3%	N=12	3%	N=11	14%	N=57	79%	N=333	100%	N=422
Purchase goods or services from a business located in Ramsey	0%	N=1	4%	N=18	47%	N=196	36%	N=151	13%	N=55	100%	N=421
Vote in local elections	8%	N=36	8%	N=34	13%	N=53	32%	N=133	39%	N=165	100%	N=420

Table 53: Question D2

Would you say that in general your health is:	Percent		Number	
Excellent	23%		N=95	
Very good	49%		N=205	
Good	25%		N=106	
Fair	3%		N=14	
Poor	0%		N=2	
Total	100%		N=422	

The National Citizen Survey™

Table 54: Question D3

What impact, if any, do you think the economy will have on your family income in the next 6 months? Do you think the impact will be	Percent	Number
Very positive	3%	N=11
Somewhat positive	26%	N=111
Neutral	54%	N=227
Somewhat negative	14%	N=61
Very negative	2%	N=10
Total	100%	N=420

Table 55: Question D4

What is your employment status?	Percent	Number
Working full time for pay	71%	N=298
Working part time for pay	9%	N=38
Unemployed, looking for paid work	2%	N=8
Unemployed, not looking for paid work	3%	N=14
Fully retired	15%	N=61
Total	100%	N=419

Table 56: Question D5

Do you work inside the boundaries of Ramsey?	Percent	Number
Yes, outside the home	14%	N=59
Yes, from home	6%	N=23
No	80%	N=332
Total	100%	N=414

Table 57: Question D6

How many years have you lived in Ramsey?	Percent	Number
Less than 2 years	13%	N=55
2 to 5 years	16%	N=68
6 to 10 years	17%	N=74
11 to 20 years	22%	N=94
More than 20 years	31%	N=132
Total	100%	N=423

Table 58: Question D7

Which best describes the building you live in?	Percent	Number
One family house detached from any other houses	82%	N=346
Building with two or more homes (duplex, townhome, apartment or condominium)	18%	N=75
Mobile home	0%	N=0
Other	0%	N=1
Total	100%	N=422

The National Citizen Survey™

Table 59: Question D8

Is this house, apartment or mobile home...	Percent	Number
Rented	9%	N=37
Owned	91%	N=384
Total	100%	N=421

Table 60: Question D9

About how much is your monthly housing cost for the place you live (including rent, mortgage payment, property tax, property insurance and homeowners' association (HOA) fees)?	Percent	Number
Less than \$300 per month	3%	N=11
\$300 to \$599 per month	6%	N=25
\$600 to \$999 per month	15%	N=60
\$1,000 to \$1,499 per month	38%	N=155
\$1,500 to \$2,499 per month	32%	N=129
\$2,500 or more per month	7%	N=28
Total	100%	N=408

Table 61: Question D10

Do any children 17 or under live in your household?	Percent	Number
No	56%	N=236
Yes	44%	N=187
Total	100%	N=422

Table 62: Question D11

Are you or any other members of your household aged 65 or older?	Percent	Number
No	84%	N=355
Yes	16%	N=69
Total	100%	N=424

Table 63: Question D12

How much do you anticipate your household's total income before taxes will be for the current year? (Please include in your total income money from all sources for all persons living in your household.)	Percent	Number
Less than \$25,000	2%	N=9
\$25,000 to \$49,999	16%	N=63
\$50,000 to \$99,999	44%	N=177
\$100,000 to \$149,999	27%	N=106
\$150,000 or more	11%	N=44
Total	100%	N=398

Table 64: Question D13

Are you Spanish, Hispanic or Latino?	Percent	Number
No, not Spanish, Hispanic or Latino	99%	N=416
Yes, I consider myself to be Spanish, Hispanic or Latino	1%	N=2
Total	100%	N=418

The National Citizen Survey™

Table 65: Question D14

What is your race? (Mark one or more races to indicate what race(s) you consider yourself to be.)	Percent	Number
American Indian or Alaskan Native	0%	N=0
Asian, Asian Indian or Pacific Islander	1%	N=3
Black or African American	3%	N=11
White	95%	N=400
Other	3%	N=14

Total may exceed 100% as respondents could select more than one option.

Table 66: Question D15

In which category is your age?	Percent	Number
18 to 24 years	2%	N=10
25 to 34 years	27%	N=114
35 to 44 years	18%	N=76
45 to 54 years	26%	N=110
55 to 64 years	12%	N=52
65 to 74 years	9%	N=39
75 years or older	5%	N=21
Total	100%	N=422

Table 67: Question D16

What is your sex?	Percent	Number
Female	50%	N=208
Male	50%	N=210
Total	100%	N=418

Table 68: Question D17

Do you consider a cell phone or landline your primary telephone number?	Percent	Number
Cell	57%	N=239
Land line	26%	N=111
Both	17%	N=71
Total	100%	N=421

Appendix B: Benchmark Comparisons

Comparison Data

NRC’s database of comparative resident opinion is comprised of resident perspectives gathered in surveys from over 500 communities whose residents evaluated the same kinds of topics on The National Citizen Survey™. The comparison evaluations are from the most recent survey completed in each community; most communities conduct surveys every year or in alternating years. NRC adds the latest results quickly upon survey completion, keeping the benchmark data fresh and relevant. The communities in the database represent a wide geographic and population range. The City of Ramsey chose to have comparisons made to the entire database and a subset of similar jurisdictions from the database of communities in Minnesota and Western Wisconsin of population 10,000 to 74,999.

Interpreting the Results

Ratings are compared when there are at least five communities in which a similar question was asked. Where comparisons are available, four columns are provided in the table. The first column is Ramsey’s “percent positive.” The percent positive is the combination of the top two most positive response options (i.e., “excellent” and “good,” “very safe” and “somewhat safe,” “essential” and “very important,” etc.), or, in the case of resident behaviors/participation, the percent positive represents the proportion of respondents indicating “yes” or participating in an activity at least once a month. The second column is the rank assigned to Ramsey’s rating among communities where a similar question was asked. The third column is the number of communities that asked a similar question. The final column shows the comparison of Ramsey’s rating to the benchmark.

In that final column, Ramsey’s results are noted as being “higher” than the benchmark, “lower” than the benchmark or “similar” to the benchmark, meaning that the average rating given by Ramsey residents is statistically similar to or different (greater or lesser) than the benchmark. More extreme differences are noted as “much higher” or “much lower.”

Benchmark Database Characteristics	
Region	Percent
New England	3%
Middle Atlantic	5%
East North Central	15%
West North Central	13%
South Atlantic	22%
East South Central	3%
West South Central	7%
Mountain	16%
Pacific	16%
Population	Percent
Less than 10,000	10%
10,000 to 24,999	22%
25,000 to 49,999	23%
50,000 to 99,999	22%
100,000 or more	23%

National Benchmark Comparisons

Table 69: Community Characteristics General

	Percent positive	Rank	Number of communities in comparison	Comparison to benchmark
The overall quality of life in Ramsey	72%	288	385	Similar
Overall image or reputation of Ramsey	51%	239	289	Lower
Ramsey as a place to live	82%	220	319	Similar
Your neighborhood as a place to live	84%	145	252	Similar
Ramsey as a place to raise children	83%	171	315	Similar
Ramsey as a place to retire	51%	255	299	Lower
Overall appearance of Ramsey	77%	148	296	Similar

Table 70: Community Characteristics by Facet

		Percent positive	Rank	Number of communities in comparison	Comparison to benchmark
Safety	Overall feeling of safety in Ramsey	90%	71	156	Similar
	In your neighborhood during the day	94%	80	295	Similar
	In Ramsey's downtown/commercial area during the day	94%	60	252	Similar
Mobility	Overall ease of getting to the places you usually have to visit	68%	56	67	Similar
	Availability of paths and walking trails	75%	74	238	Similar
	Ease of walking in Ramsey	70%	101	244	Similar
	Ease of travel by bicycle in Ramsey	66%	67	251	Similar
	Ease of travel by car in Ramsey	64%	137	247	Similar
	Traffic flow on major streets	55%	131	289	Similar
Natural Environment	Quality of overall natural environment in Ramsey	84%	74	231	Similar
	Cleanliness of Ramsey	82%	91	228	Similar
Built Environment	Overall "built environment" of Ramsey (including overall design, buildings, parks and transportation systems)	56%	40	63	Similar
	Overall quality of new development in Ramsey	48%	194	236	Similar
	Availability of affordable quality housing	69%	13	256	Higher
	Variety of housing options	75%	31	222	Higher
	Public places where people want to spend time	50%	44	61	Similar
	Overall economic health of Ramsey	50%	42	67	Similar
	Vibrant downtown/commercial area	21%	53	60	Lower
	Overall quality of business and service establishments in Ramsey	49%	194	218	Lower
Economy	Cost of living in Ramsey	49%	24	65	Similar
	Shopping opportunities	23%	229	243	Much lower
	Employment opportunities	27%	163	259	Similar
	Ramsey as a place to visit	35%	66	75	Lower
	Ramsey as a place to work	42%	248	290	Lower
	Health and wellness opportunities in Ramsey	66%	43	63	Similar
	Recreational opportunities	53%	185	255	Similar
	Fitness opportunities (including exercise classes and paths or trails, etc.)	60%	45	63	Similar
Education and Enrichment	Overall opportunities for education and enrichment	54%	49	63	Lower
	Opportunities to attend cultural/arts/music activities	41%	191	249	Similar
	Adult educational opportunities	54%	41	59	Similar
	K-12 education	75%	113	215	Similar
	Availability of affordable quality child care/preschool	69%	44	216	Similar
Community Engagement	Opportunities to participate in community matters	52%	174	222	Similar
	Opportunities to volunteer	55%	207	221	Lower

Table 71: Governance General

	Percent positive	Rank	Number of communities in comparison	Comparison to benchmark
Services provided by the City of Ramsey	74%	203	362	Similar
Overall customer service by Ramsey employees (police, receptionists, planners, etc.)	79%	174	308	Similar
Value of services for the taxes paid to Ramsey	44%	245	344	Similar
Overall direction that Ramsey is taking	48%	201	273	Similar
Job Ramsey government does at welcoming citizen involvement	48%	159	256	Similar
Overall confidence in Ramsey government	43%	48	67	Similar
Generally acting in the best interest of the community	43%	47	63	Similar
Being honest	47%	42	63	Similar
Treating all residents fairly	52%	35	63	Similar

Table 72: Governance by Facet

	Percent positive	Rank	Number of communities in comparison	Comparison to benchmark	
Safety	Police services	86%	97	365	Similar
	Fire services	92%	177	304	Similar
	Crime prevention	80%	70	293	Similar
	Fire prevention and education	83%	113	243	Similar
	Animal control	60%	173	277	Similar
Mobility	Traffic enforcement	68%	126	315	Similar
	Street repair	45%	243	367	Similar
	Street cleaning	57%	170	247	Similar
	Street lighting	55%	197	271	Similar
	Snow removal	55%	180	249	Similar
	Sidewalk maintenance	61%	102	257	Similar
	Traffic signal timing	42%	179	211	Similar
	Drinking water	72%	140	279	Similar
Natural Environment	Preservation of natural areas such as open space, farmlands and greenbelts	69%	75	218	Similar
Built Environment	Storm drainage	73%	117	303	Similar
	Sewer services	81%	125	263	Similar
	Land use, planning and zoning	43%	181	244	Similar
	Code enforcement (weeds, abandoned buildings, etc.)	40%	224	301	Similar
Economy	Economic development	43%	143	235	Similar
Recreation and Wellness	City parks	75%	208	276	Similar
	Recreation centers or facilities	59%	197	234	Lower
Community Engagement	Public information services	58%	174	229	Similar

Table 73: Participation General

	Percent positive	Rank	Number of communities in comparison	Comparison to benchmark
Sense of community	45%	224	256	Lower
Recommend living in Ramsey to someone who asks	82%	159	228	Similar
Remain in Ramsey for the next five years	85%	117	225	Similar
Contacted Ramsey (in-person, phone, email or web) for help or information	44%	163	260	Similar

Table 74: Participation by Facet

		Percent positive	Rank	Number of communities in comparison	Comparison to benchmark
Safety	Did NOT report a crime to the police	90%	3	65	Higher
	Household member was NOT a victim of a crime	94%	17	227	Similar
Mobility	Used rail or other public transportation instead of driving	38%	18	54	Similar
	Walked or biked instead of driving	56%	32	62	Similar
Natural Environment	Recycle at home	95%	39	214	Higher
Built Environment	NOT experiencing housing costs stress	78%	28	210	Higher
Economy	Purchase goods or services from a business located in Ramsey	95%	42	61	Similar
	Economy will have positive impact on income	29%	41	212	Similar
	Work inside boundaries of Ramsey	20%	60	61	Much lower
Recreation and Wellness	Visited a neighborhood park or City park	83%	137	222	Similar
	In very good to excellent health	71%	23	61	Similar
Education and Enrichment	Attended City-sponsored event	53%	24	60	Similar
Community Engagement	Campaigned or advocated for an issue, cause or candidate	11%	59	60	Lower
	Contacted Ramsey elected officials (in-person, phone, email or web) to express your opinion	11%	58	61	Similar
	Volunteered your time to some group/activity in Ramsey	22%	209	219	Much lower
	Attended a local public meeting	14%	210	220	Lower
	Watched (online or on television) a local public meeting	26%	129	183	Similar
	Vote in local elections	83%	60	212	Similar

Communities included in national comparisons

The communities included in Ramsey’s comparisons are listed on the following pages along with their population according to the 2010 Census.

Abilene city, KS.....	6,844	Battle Creek city, MI.....	52,347
Adams County, CO.....	441,603	Bay City city, MI.....	34,932
Airway Heights city, WA.....	6,114	Baytown city, TX.....	71,802
Albany city, OR.....	50,158	Bedford city, TX.....	46,979
Albemarle County, VA.....	98,970	Bedford town, MA.....	13,320
Albert Lea city, MN.....	18,016	Bellevue city, WA.....	122,363
Altoona city, IA.....	14,541	Bellingham city, WA.....	80,885
Ames city, IA.....	58,965	Beltrami County, MN.....	44,442
Andover CDP, MA.....	8,762	Benbrook city, TX.....	21,234
Ankeny city, IA.....	45,582	Bend city, OR.....	76,639
Ann Arbor city, MI.....	113,934	Benicia city, CA.....	26,997
Annapolis city, MD.....	38,394	Bettendorf city, IA.....	33,217
Apple Valley town, CA.....	69,135	Billings city, MT.....	104,170
Arlington city, TX.....	365,438	Blaine city, MN.....	57,186
Arlington County, VA.....	207,627	Bloomfield Hills city, MI.....	3,869
Arvada city, CO.....	106,433	Bloomington city, IL.....	76,610
Ashland city, OR.....	20,078	Bloomington city, MN.....	82,893
Ashland town, VA.....	7,225	Blue Springs city, MO.....	52,575
Aspen city, CO.....	6,658	Boise City city, ID.....	205,671
Auburn city, AL.....	53,380	Boonville city, MO.....	8,319
Auburn city, WA.....	70,180	Boulder city, CO.....	97,385
Aurora city, CO.....	325,078	Boulder County, CO.....	294,567
Austin city, TX.....	790,390	Bowling Green city, KY.....	58,067
Bainbridge Island city, WA.....	23,025	Brentwood city, TN.....	37,060
Baltimore city, MD.....	620,961	Bristol city, TN.....	26,702
Baltimore County, MD.....	805,029	Broken Arrow city, OK.....	98,850

The National Citizen Survey™

Brookfield city, WI	37,920	Des Moines city, IA	203,433
Brookline CDP, MA	58,732	Destin city, FL	12,305
Brookline town, NH	4,991	Dewey-Humboldt town, AZ	3,894
Broomfield city, CO	55,889	Dorchester County, MD	32,618
Brownsburg town, IN	21,285	Dothan city, AL	65,496
Bryan city, TX	76,201	Douglas County, CO	285,465
Burien city, WA	33,313	Dover city, NH	29,987
Burleson city, TX	36,690	Dublin city, OH	41,751
Cabarrus County, NC	178,011	Duluth city, MN	86,265
Cambridge city, MA	105,162	Duncanville city, TX	38,524
Canton city, SD	3,057	Durham city, NC	228,330
Cape Coral city, FL	154,305	East Baton Rouge Parish, LA	440,171
Cape Girardeau city, MO	37,941	East Grand Forks city, MN	8,601
Carlisle borough, PA	18,682	East Lansing city, MI	48,579
Carlsbad city, CA	105,328	Eau Claire city, WI	65,883
Cartersville city, GA	19,731	Eden Prairie city, MN	60,797
Cary town, NC	135,234	Edgerton city, KS	1,671
Casa Grande city, AZ	48,571	Edina city, MN	47,941
Casper city, WY	55,316	Edmonds city, WA	39,709
Castine town, ME	1,366	El Cerrito city, CA	23,549
Castle Pines North city, CO	10,360	El Paso city, TX	649,121
Castle Rock town, CO	48,231	Elk Grove city, CA	153,015
Cedar Falls city, IA	39,260	Elk River city, MN	22,974
Cedar Rapids city, IA	126,326	Elko New Market city, MN	4,110
Centennial city, CO	100,377	Elmhurst city, IL	44,121
Centralia city, IL	13,032	Encinitas city, CA	59,518
Chambersburg borough, PA	20,268	Englewood city, CO	30,255
Chandler city, AZ	236,123	Erie town, CO	18,135
Chanhassen city, MN	22,952	Escambia County, FL	297,619
Chapel Hill town, NC	57,233	Estes Park town, CO	5,858
Charlotte city, NC	731,424	Fairview town, TX	7,248
Charlotte County, FL	159,978	Farmington Hills city, MI	79,740
Charlottesville city, VA	43,475	Fayetteville city, NC	200,564
Chesterfield County, VA	316,236	Fishers town, IN	76,794
Chippewa Falls city, WI	13,661	Flagstaff city, AZ	65,870
Citrus Heights city, CA	83,301	Flower Mound town, TX	64,669
Clackamas County, OR	375,992	Flushing city, MI	8,389
Clayton city, MO	15,939	Forest Grove city, OR	21,083
Clearwater city, FL	107,685	Fort Collins city, CO	143,986
Clive city, IA	15,447	Fort Smith city, AR	86,209
Clovis city, CA	95,631	Fort Worth city, TX	741,206
College Park city, MD	30,413	Fountain Hills town, AZ	22,489
College Station city, TX	93,857	Franklin city, TN	62,487
Colleyville city, TX	22,807	Fredericksburg city, VA	24,286
Collinsville city, IL	25,579	Freeport CDP, ME	1,485
Columbia city, MO	108,500	Freeport city, IL	25,638
Columbus city, WI	4,991	Fremont city, CA	214,089
Commerce City city, CO	45,913	Friendswood city, TX	35,805
Concord city, CA	122,067	Fruita city, CO	12,646
Concord town, MA	17,668	Gahanna city, OH	33,248
Conyers city, GA	15,195	Gainesville city, FL	124,354
Cookeville city, TN	30,435	Gaithersburg city, MD	59,933
Coon Rapids city, MN	61,476	Galveston city, TX	47,743
Cooper City city, FL	28,547	Garden City city, KS	26,658
Coronado city, CA	18,912	Gardner city, KS	19,123
Corvallis city, OR	54,462	Geneva city, NY	13,261
Cross Roads town, TX	1,563	Georgetown city, TX	47,400
Crystal Lake city, IL	40,743	Gilbert town, AZ	208,453
Dade City city, FL	6,437	Gillette city, WY	29,087
Dakota County, MN	398,552	Globe city, AZ	7,532
Dallas city, OR	14,583	Golden Valley city, MN	20,371
Dallas city, TX	1,197,816	Goodyear city, AZ	65,275
Dardenne Prairie city, MO	11,494	Grafton village, WI	11,459
Davenport city, IA	99,685	Grand Blanc city, MI	8,276
Davidson town, NC	10,944	Grand Island city, NE	48,520
Decatur city, GA	19,335	Grass Valley city, CA	12,860
Delray Beach city, FL	60,522	Greeley city, CO	92,889
Denison city, TX	22,682	Green Valley CDP, AZ	21,391
Denver city, CO	600,158	Greenwood Village city, CO	13,925
Derby city, KS	22,158	Greer city, SC	25,515

The National Citizen Survey™

Guilford County, NC	488,406	League City city, TX	83,560
Gunnison County, CO	15,324	Lee County, FL.....	618,754
Hailey city, ID	7,960	Lee's Summit city, MO.....	91,364
Haines Borough, AK	2,508	Lewis County, NY	27,087
Hallandale Beach city, FL.....	37,113	Lewiston city, ME	36,592
Hamilton city, OH.....	62,477	Lincoln city, NE	258,379
Hampton city, VA.....	137,436	Lindsborg city, KS	3,458
Hanover County, VA.....	99,863	Littleton city, CO	41,737
Harrisonburg city, VA	48,914	Livermore city, CA.....	80,968
Harrisonville city, MO	10,019	Lone Tree city, CO	10,218
Hayward city, CA	144,186	Longmont city, CO	86,270
Henderson city, NV	257,729	Longview city, TX.....	80,455
Hermiston city, OR.....	16,745	Los Alamos County, NM.....	17,950
High Point city, NC.....	104,371	Louisville city, CO.....	18,376
Highland Park city, IL	29,763	Lynchburg city, VA	75,568
Highlands Ranch CDP, CO	96,713	Lynnwood city, WA	35,836
Hillsborough town, NC.....	6,087	Madison city, WI	233,209
Holden town, MA	17,346	Mankato city, MN	39,309
Holland city, MI.....	33,051	Maple Grove city, MN	61,567
Honolulu County, HI.....	953,207	Maple Valley city, WA	22,684
Hooksett town, NH.....	13,451	Maricopa County, AZ	3,817,117
Hopkins city, MN.....	17,591	Marin County, CA	252,409
Hopkinton town, MA.....	14,925	Maryland Heights city, MO.....	27,472
Hoquiam city, WA	8,726	McAllen city, TX	129,877
Houston city, TX	2,099,451	McDonough city, GA.....	22,084
Hudson city, OH.....	22,262	McKinney city, TX.....	131,117
Hudson town, CO.....	2,356	McMinnville city, OR	32,187
Hudsonville city, MI.....	7,116	Mecklenburg County, NC	919,628
Huntersville town, NC.....	46,773	Medford city, OR.....	74,907
Hurst city, TX.....	37,337	Menlo Park city, CA	32,026
Hutchinson city, MN	14,178	Mercer Island city, WA	22,699
Hutto city, TX	14,698	Meridian charter township, MI	39,688
Hyattsville city, MD	17,557	Meridian city, ID	75,092
Indian Trail town, NC	33,518	Merriam city, KS.....	11,003
Indianola city, IA	14,782	Merrill city, WI	9,661
Iowa City city, IA	67,862	Mesa city, AZ.....	439,041
Jackson County, MI.....	160,248	Mesa County, CO	146,723
James City County, VA	67,009	Miami Beach city, FL	87,779
Jefferson City city, MO	43,079	Miami city, FL	399,457
Jefferson County, CO	534,543	Midland city, MI	41,863
Jefferson County, NY.....	116,229	Milford city, DE	9,559
Jerome city, ID	10,890	Milton city, GA	32,661
Johnson City city, TN.....	63,152	Minneapolis city, MN	382,578
Johnson County, KS	544,179	Mission Viejo city, CA	93,305
Johnston city, IA.....	17,278	Modesto city, CA	201,165
Jupiter town, FL.....	55,156	Monterey city, CA.....	27,810
Kalamazoo city, MI.....	74,262	Montgomery County, MD.....	971,777
Kansas City city, MO.....	459,787	Montgomery County, VA.....	94,392
Keizer city, OR.....	36,478	Montpelier city, VT	7,855
Kenmore city, WA	20,460	Monument town, CO	5,530
Kennedale city, TX	6,763	Mooreville town, NC.....	32,711
Kennett Square borough, PA.....	6,072	Morristown city, TN.....	29,137
Kirkland city, WA.....	48,787	Moscow city, ID	23,800
La Mesa city, CA	57,065	Mountain Village town, CO.....	1,320
La Plata town, MD.....	8,753	Mountlake Terrace city, WA	19,909
La Porte city, TX	33,800	Munster town, IN	23,603
La Vista city, NE.....	15,758	Muscataine city, IA	22,886
Lafayette city, CO	24,453	Naperville city, IL	141,853
Laguna Beach city, CA.....	22,723	Needham CDP, MA.....	28,886
Laguna Hills city, CA.....	30,344	New Braunfels city, TX	57,740
Laguna Niguel city, CA	62,979	New Brighton city, MN.....	21,456
Lake Oswego city, OR	36,619	New Hanover County, NC	202,667
Lake Zurich village, IL	19,631	New Orleans city, LA	343,829
Lakeville city, MN	55,954	Newport Beach city, CA	85,186
Lakewood city, CO	142,980	Newport city, RI.....	24,672
Lane County, OR.....	351,715	Newport News city, VA.....	180,719
Larimer County, CO.....	299,630	Newton city, IA	15,254
Las Cruces city, NM.....	97,618	Noblesville city, IN	51,969
Las Vegas city, NV	583,756	Nogales city, AZ.....	20,837
Lawrence city, KS.....	87,643	Norfolk city, VA.....	242,803

The National Citizen Survey™

Norman city, OK	110,925	Riverdale city, UT.....	8,426
North Las Vegas city, NV	216,961	Riverside city, CA	303,871
Northglenn city, CO.....	35,789	Riverside city, MO	2,937
Novato city, CA	51,904	Rochester city, MI.....	12,711
Novi city, MI	55,224	Rochester Hills city, MI.....	70,995
O'Fallon city, IL.....	28,281	Rock Hill city, SC.....	66,154
O'Fallon city, MO.....	79,329	Rockford city, IL	152,871
Oak Park village, IL.....	51,878	Rockville city, MD.....	61,209
Oakland Park city, FL	41,363	Rolla city, MO	19,559
Oakley city, CA	35,432	Roswell city, GA	88,346
Ogdensburg city, NY	11,128	Round Rock city, TX.....	99,887
Oklahoma City city, OK.....	579,999	Royal Oak city, MI.....	57,236
Olathe city, KS	125,872	Saco city, ME.....	18,482
Old Town city, ME.....	7,840	Sahuarita town, AZ	25,259
Olmsted County, MN	144,248	Salida city, CO	5,236
Orland Park village, IL.....	56,767	Salt Lake City city, UT	186,440
Oshkosh city, WI.....	66,083	Sammamish city, WA	45,780
Otsego County, MI.....	24,164	San Antonio city, TX.....	1,327,407
Oviedo city, FL.....	33,342	San Carlos city, CA.....	28,406
Paducah city, KY	25,024	San Diego city, CA	1,307,402
Palm Coast city, FL.....	75,180	San Francisco city, CA	805,235
Palm Springs city, CA	44,552	San Jose city, CA	945,942
Palo Alto city, CA	64,403	San Juan County, NM.....	130,044
Panama City city, FL.....	36,484	San Marcos city, TX.....	44,894
Papillion city, NE	18,894	San Rafael city, CA.....	57,713
Park City city, UT	7,558	Sandy Springs city, GA	93,853
Parker town, CO	45,297	Sanford city, FL.....	53,570
Parkland city, FL.....	23,962	Sangamon County, IL.....	197,465
Pasadena city, CA	137,122	Santa Clarita city, CA.....	176,320
Pasco city, WA	59,781	Santa Fe County, NM	144,170
Pasco County, FL	464,697	Santa Monica city, CA.....	89,736
Peachtree City city, GA.....	34,364	Sarasota County, FL.....	379,448
Pearland city, TX.....	91,252	Savage city, MN.....	26,911
Peoria city, AZ	154,065	Savannah city, GA.....	136,286
Peoria city, IL	115,007	Scarborough CDP, ME	4,403
Peoria County, IL	186,494	Scott County, MN.....	129,928
Peters township, PA	21,213	Scottsdale city, AZ	217,385
Petoskey city, MI	5,670	Seaside city, CA	33,025
Pflugerville city, TX	46,936	SeaTac city, WA.....	26,909
Phoenix city, AZ.....	1,445,632	Sevierville city, TN	14,807
Pinal County, AZ	375,770	Shawnee city, KS	62,209
Pinehurst village, NC	13,124	Sheboygan city, WI.....	49,288
Piqua city, OH.....	20,522	Shorewood city, MN	7,307
Platte City city, MO.....	4,691	Sioux Falls city, SD.....	153,888
Plymouth city, MN.....	70,576	Skokie village, IL.....	64,784
Pocatello city, ID.....	54,255	Snellville city, GA	18,242
Polk County, IA.....	430,640	South Lake Tahoe city, CA.....	21,403
Port Huron city, MI.....	30,184	South Portland city, ME	25,002
Port Orange city, FL	56,048	Southborough town, MA.....	9,767
Port St. Lucie city, FL	164,603	Southlake city, TX.....	26,575
Portland city, OR.....	583,776	Sparks city, NV	90,264
Post Falls city, ID	27,574	Spokane Valley city, WA	89,755
Prince William County, VA.....	402,002	Spring Hill city, KS.....	5,437
Provo city, UT	112,488	Springboro city, OH.....	17,409
Pueblo city, CO	106,595	Springfield city, OR	59,403
Purcellville town, VA	7,727	Springville city, UT	29,466
Queen Creek town, AZ	26,361	St. Charles city, IL.....	32,974
Radford city, VA.....	16,408	St. Cloud city, MN	65,842
Radnor township, PA.....	31,531	St. Joseph city, MO	76,780
Ramsey city, MN.....	23,668	St. Louis County, MN.....	200,226
Rapid City city, SD	67,956	St. Louis Park city, MN	45,250
Raymore city, MO	19,206	Stallings town, NC.....	13,831
Redmond city, WA	54,144	State College borough, PA	42,034
Rehoboth Beach city, DE	1,327	Sterling Heights city, MI	129,699
Reno city, NV.....	225,221	Sugar Grove village, IL	8,997
Reston CDP, VA	58,404	Sugar Land city, TX.....	78,817
Richmond city, CA.....	103,701	Summit city, NJ.....	21,457
Richmond Heights city, MO.....	8,603	Sunnyvale city, CA	140,081
Rifle city, CO.....	9,172	Surprise city, AZ.....	117,517
River Falls city, WI	15,000	Suwanee city, GA.....	15,355

The National Citizen Survey™

Tacoma city, WA.....	198,397	Weddington town, NC.....	9,459
Takoma Park city, MD.....	16,715	Wentzville city, MO.....	29,070
Tamarac city, FL.....	60,427	West Carrollton city, OH.....	13,143
Temecula city, CA.....	100,097	West Chester borough, PA.....	18,461
Tempe city, AZ.....	161,719	West Des Moines city, IA.....	56,609
Temple city, TX.....	66,102	West Richland city, WA.....	11,811
The Woodlands CDP, TX.....	93,847	Westerville city, OH.....	36,120
Thornton city, CO.....	118,772	Westlake town, TX.....	992
Thousand Oaks city, CA.....	126,683	Westminster city, CO.....	106,114
Tualatin city, OR.....	26,054	Weston town, MA.....	11,261
Tulsa city, OK.....	391,906	Wheat Ridge city, CO.....	30,166
Twin Falls city, ID.....	44,125	White House city, TN.....	10,255
Tyler city, TX.....	96,900	Whitewater township, MI.....	2,597
Umatilla city, OR.....	6,906	Wichita city, KS.....	382,368
Upper Arlington city, OH.....	33,771	Williamsburg city, VA.....	14,068
Urbandale city, IA.....	39,463	Wilmington city, NC.....	106,476
Vail town, CO.....	5,305	Wilsonville city, OR.....	19,509
Vancouver city, WA.....	161,791	Winchester city, VA.....	26,203
Ventura CCD, CA.....	111,889	Windsor town, CO.....	18,644
Vestavia Hills city, AL.....	34,033	Windsor town, CT.....	29,044
Virginia Beach city, VA.....	437,994	Winston-Salem city, NC.....	229,617
Wake Forest town, NC.....	30,117	Winter Garden city, FL.....	34,568
Walnut Creek city, CA.....	64,173	Woodland city, CA.....	55,468
Washington County, MN.....	238,136	Woodland city, WA.....	5,509
Washoe County, NV.....	421,407	Wrentham town, MA.....	10,955
Watauga city, TX.....	23,497	Yakima city, WA.....	91,067
Wauwatosa city, WI.....	46,396	York County, VA.....	65,464
Waverly city, IA.....	9,874	Yuma city, AZ.....	93,064

Population 10,000 to 74,999 in Minnesota and Western Wisconsin Benchmark Comparisons

Table 75: Community Characteristics General

	Percent positive	Rank	Number of communities in comparison	Comparison to benchmark
The overall quality of life in Ramsey	72%	15	18	Similar
Overall image or reputation of Ramsey	51%	9	10	Lower
Ramsey as a place to live	82%	9	11	Similar
Your neighborhood as a place to live	84%	9	11	Similar
Ramsey as a place to raise children	83%	9	13	Similar
Ramsey as a place to retire	51%	12	12	Lower
Overall appearance of Ramsey	77%	7	12	Similar

Table 76: Community Characteristics by Facet

	Percent positive	Rank	Number of communities in comparison	Comparison to benchmark	
Safety	Overall feeling of safety in Ramsey	90%	4	5	Similar
	In your neighborhood during the day	94%	6	11	Similar
	In Ramsey's downtown/commercial area during the day	94%	6	10	Similar
Mobility	Overall ease of getting to the places you usually have to visit	68%	NA	NA	NA
	Availability of paths and walking trails	75%	7	9	Similar
	Ease of walking in Ramsey	70%	9	10	Similar
	Ease of travel by bicycle in Ramsey	66%	7	10	Similar
	Ease of travel by car in Ramsey	64%	9	10	Similar
	Traffic flow on major streets	55%	6	8	Similar
Natural Environment	Quality of overall natural environment in Ramsey	84%	4	8	Similar
	Cleanliness of Ramsey	82%	6	9	Similar
Built Environment	Overall "built environment" of Ramsey (including overall design, buildings, parks and transportation systems)	56%	NA	NA	NA
	Overall quality of new development in Ramsey	48%	8	9	Lower

The National Citizen Survey™

		Percent positive	Rank	Number of communities in comparison	Comparison to benchmark	
	Availability of affordable quality housing	69%	1	10	Similar	
	Variety of housing options	75%	4	9	Similar	
	Public places where people want to spend time	50%	NA	NA	NA	
Economy	Overall economic health of Ramsey	50%	NA	NA	NA	
	Vibrant downtown/commercial area	21%	NA	NA	NA	
	Overall quality of business and service establishments in Ramsey	49%	8	9	Lower	
	Cost of living in Ramsey	49%	NA	NA	NA	
	Shopping opportunities	23%	9	10	Lower	
	Employment opportunities	27%	9	12	Similar	
	Ramsey as a place to visit	35%	NA	NA	NA	
	Ramsey as a place to work	42%	10	11	Lower	
	Recreation and Wellness	Health and wellness opportunities in Ramsey	66%	NA	NA	NA
		Recreational opportunities	53%	11	12	Lower
Fitness opportunities (including exercise classes and paths or trails, etc.)		60%	NA	NA	NA	
Education and Enrichment	Overall opportunities for education and enrichment	54%	NA	NA	NA	
	Opportunities to attend cultural/arts/music activities	41%	8	9	Similar	
	Adult educational opportunities	54%	NA	NA	NA	
	K-12 education	75%	5	7	Similar	
	Availability of affordable quality child care/preschool	69%	3	8	Similar	
Community Engagement	Opportunities to participate in community matters	52%	5	6	Similar	
	Opportunities to volunteer	55%	8	8	Lower	

Table 77: Governance General

	Percent positive	Rank	Number of communities in comparison	Comparison to benchmark
Services provided by the City of Ramsey	74%	9	13	Similar
Overall customer service by Ramsey employees (police, receptionists, planners, etc.)	79%	11	13	Similar
Value of services for the taxes paid to Ramsey	44%	14	17	Similar
Overall direction that Ramsey is taking	48%	8	11	Similar
Job Ramsey government does at welcoming citizen involvement	48%	9	12	Similar
Overall confidence in Ramsey government	43%	NA	NA	NA
Generally acting in the best interest of the community	43%	NA	NA	NA
Being honest	47%	NA	NA	NA
Treating all residents fairly	52%	NA	NA	NA

Table 78: Governance by Facet

		Percent positive	Rank	Number of communities in comparison	Comparison to benchmark
Safety	Police services	86%	9	14	Similar
	Fire services	92%	12	13	Similar
	Crime prevention	80%	5	10	Similar
	Fire prevention and education	83%	10	10	Similar
	Animal control	60%	14	16	Similar
	Traffic enforcement	68%	9	11	Similar
	Street repair	45%	12	16	Similar
	Street cleaning	57%	10	11	Similar
	Street lighting	55%	16	16	Lower
	Snow removal	55%	19	21	Similar
Mobility	Sidewalk maintenance	61%	7	10	Similar
	Traffic signal timing	42%	9	10	Lower

The National Citizen Survey™

		Percent positive	Rank	Number of communities in comparison	Comparison to benchmark
Natural Environment	Drinking water	72%	12	17	Similar
	Preservation of natural areas such as open space, farmlands and greenbelts	69%	7	11	Similar
Built Environment	Storm drainage	73%	10	12	Similar
	Sewer services	81%	12	16	Similar
	Land use, planning and zoning	43%	10	11	Lower
	Code enforcement (weeds, abandoned buildings, etc.)	40%	9	10	Lower
	Economic development	43%	10	11	Similar
Economy	Economic development	43%	10	11	Similar
Recreation and Wellness	City parks	75%	10	10	Lower
	Recreation centers or facilities	59%	11	11	Lower
Community Engagement	Public information services	58%	8	8	Lower

Table 79: Participation General

	Percent positive	Rank	Number of communities in comparison	Comparison to benchmark
Sense of community	45%	10	10	Lower
Recommend living in Ramsey to someone who asks	82%	7	8	Similar
Remain in Ramsey for the next five years	85%	4	8	Similar
Contacted Ramsey (in-person, phone, email or web) for help or information	44%	5	11	Similar

Table 80: Participation by Facet

		Percent positive	Rank	Number of communities in comparison	Comparison to benchmark
Safety	Did NOT report a crime to the police	90%	NA	NA	NA
	Household member was NOT a victim of a crime	94%	1	10	Similar
Mobility	Used rail or other public transportation instead of driving	38%	NA	NA	NA
	Walked or biked instead of driving	56%	NA	NA	NA
Natural Environment	Recycle at home	95%	5	9	Similar
Built Environment	NOT experiencing housing costs stress	78%	1	7	Similar
Economy	Purchase goods or services from a business located in Ramsey	95%	NA	NA	NA
	Economy will have positive impact on income	29%	1	7	Similar
	Work inside boundaries of Ramsey	20%	NA	NA	NA
Recreation and Wellness	Visited a neighborhood park or City park	83%	10	10	Similar
	In very good to excellent health	71%	NA	NA	NA
Education and Enrichment	Attended City-sponsored event	53%	NA	NA	NA
Community Engagement	Campaigned or advocated for an issue, cause or candidate	11%	NA	NA	NA
	Contacted Ramsey elected officials (in-person, phone, email or web) to express your opinion	11%	NA	NA	NA
	Volunteered your time to some group/activity in Ramsey	22%	10	10	Much lower
	Attended a local public meeting	14%	10	10	Similar
	Watched (online or on television) a local public meeting	26%	7	9	Similar
	Vote in local elections	83%	5	9	Similar

Communities included in population 10,000 to 74,999 in Minnesota and Western Wisconsin comparisons

The communities included in Ramsey’s Population 10,000 to 74,999 in Minnesota and Western Wisconsin comparisons are listed below along with their population according to the 2010 Census.

Albert Lea city, MN.....	18,016	Hutchinson city, MN	14,178
Beltrami County, MN	44,442	Lakeville city, MN	55,954
Blaine city, MN.....	57,186	Mankato city, MN	39,309
Brookfield city, WI	37,920	Maple Grove city, MN	61,567
Chanhassen city, MN	22,952	New Brighton city, MN.....	21,456
Chippewa Falls city, WI	13,661	Plymouth city, MN.....	70,576
Coon Rapids city, MN	61,476	Ramsey city, MN	23,668
Eau Claire city, WI	65,883	River Falls city, WI	15,000
Eden Prairie city, MN.....	60,797	Savage city, MN.....	26,911
Elk River city, MN.....	22,974	St. Cloud city, MN	65,842
Golden Valley city, MN.....	20,371	St. Louis Park city, MN	45,250
Hopkins city, MN.....	17,591	Westminster city, CO.....	106,114

Appendix C: Detailed Survey Methods

The National Citizen Survey (The NCS™) was developed to provide communities an accurate, affordable and easy way to assess and interpret resident opinion about important local topics. Standardization of common questions and survey methods provide the rigor to assure valid results, and each community has enough flexibility to construct a customized version of The NCS.

Results offer insight into residents' perspectives about the community as a whole, including local amenities, services, public trust, resident participation and other aspects of the community in order to support budgeting, land use and strategic planning and communication with residents. Resident demographic characteristics permit comparison to the Census as well as comparison of results for different subgroups of residents.

Survey Validity

The question of survey validity has two parts: 1) how can a community be confident that the results from those who completed the questionnaire are representative of the results that would have been obtained had the survey been administered to the entire population? and 2) how closely do the perspectives recorded on the survey reflect what residents really believe or do?

To answer the first question, the best survey research practices were used for the resources spent to ensure that the results from the survey respondents reflect the opinions of residents in the entire community. These practices include:

- Using a mail-out/mail-back methodology, which typically gets a higher response rate than phone for the same dollars spent. A higher response rate lessens the worry that those who did not respond are different than those who did respond.
- Selecting households at random within the community to receive the survey to ensure that the households selected to receive the survey are representative of the larger community.
- Over-sampling multi-family housing units to improve response from hard-to-reach, lower income or younger apartment dwellers.
- Selecting the respondent within the household using an unbiased sampling procedure; in this case, the "birthday method." The cover letter included an instruction requesting that the respondent in the household be the adult (18 years old or older) who most recently had a birthday, irrespective of year of birth.
- Contacting potential respondents three times to encourage response from people who may have different opinions or habits than those who would respond with only a single prompt.
- Inviting response in a compelling manner (using appropriate letterhead/logos and a signature of a visible leader) to appeal to recipients' sense of civic responsibility.
- Providing a pre-addressed, postage-paid return envelope.
- Offering the survey in Spanish or other language when requested by a given community.
- Weighting the results to reflect the demographics of the population.

The answer to the second question about how closely the perspectives recorded on the survey reflect what residents really believe or do is more complex. Resident responses to surveys are influenced by a variety of factors. For questions about service quality, residents' expectations for service quality play a role as well as the "objective" quality of the service provided, the way the resident perceives the entire community (that is, the context in which the service is provided), the scale on which the resident is asked to record his or her opinion and, of course, the opinion, itself, that a resident holds about the service. Similarly a resident's report of certain behaviors is colored by what he or she believes is the socially desirable response (e.g., reporting tolerant behaviors toward "oppressed groups," likelihood of voting for a tax increase for services to poor people, use of alternative modes of travel to work besides the single occupancy vehicle), his or her memory of the actual behavior (if it is not a question speculating about future actions, like a vote), his or her confidence that he or she can be honest without suffering any negative consequences (thus the need for anonymity) as well as the actual behavior itself.

How closely survey results come to recording the way a person really feels or behaves often is measured by the coincidence of reported behavior with observed current behavior (e.g., driving habits), reported intentions to behave with observed future behavior (e.g., voting choices) or reported opinions about current community quality with objective characteristics of the community (e.g., feelings of safety correlated with rates of crime). There is a

body of scientific literature that has investigated the relationship between reported behaviors and actual behaviors. Well-conducted surveys, by and large, do capture true respondent behaviors or intentions to act with great accuracy. Predictions of voting outcomes tend to be quite accurate using survey research, as do reported behaviors that are not about highly sensitive issues (e.g., family abuse or other illegal or morally sanctioned activities). For self-reports about highly sensitive issues, statistical adjustments can be made to correct for the respondents' tendency to report what they think the "correct" response should be.

Research on the correlation of resident opinion about service quality and "objective" ratings of service quality vary, with some showing stronger relationships than others. NRC's own research has demonstrated that residents who report the lowest ratings of street repair live in communities with objectively worse street conditions than those who report high ratings of street repair (based on road quality, delay in street repair, number of road repair employees). Similarly, the lowest rated fire services appear to be "objectively" worse than the highest rated fire services (expenditures per capita, response time, "professional" status of firefighters, breadth of services and training provided). Resident opinion commonly reflects objective performance data but is an important measure on its own. NRC principals have written, "If you collect trash three times a day but residents think that your trash haul is lousy, you still have a problem."

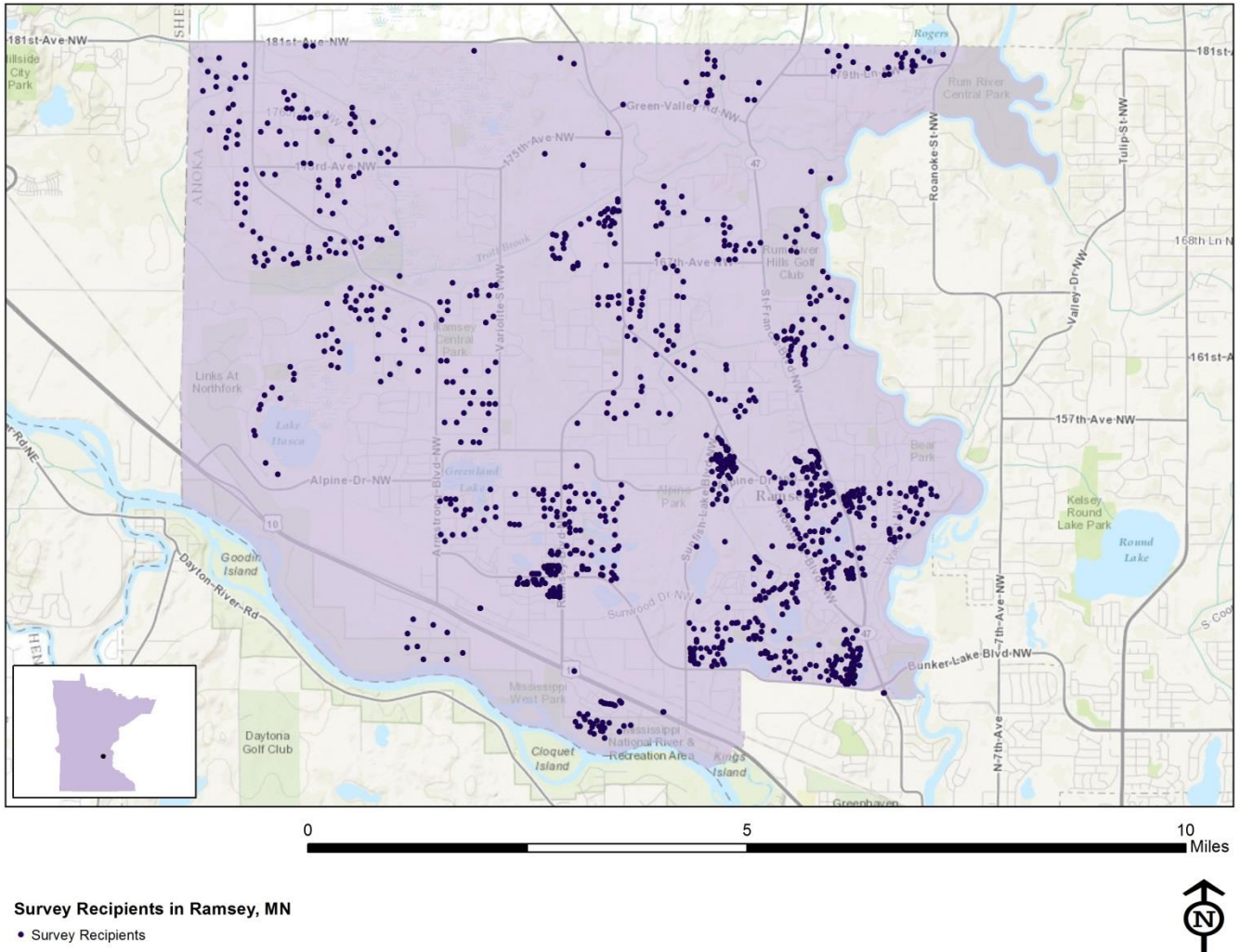
Survey Sampling

"Sampling" refers to the method by which households were chosen to receive the survey. All households within the City of Ramsey were eligible to participate in the survey. A list of all households was represented by a United States Postal Service listing of housing units within the zip codes serving Ramsey. Since some of the zip codes that serve the City of Ramsey households may also serve addresses that lie outside of the community, the exact geographic location of each housing unit was compared to community boundaries using the most current municipal boundary file (updated on a quarterly basis) and addresses located outside of the City of Ramsey boundaries were removed from consideration.

To choose the 1,200 survey recipients, a systematic sampling method was applied to the list of households previously screened for geographic location. Systematic sampling is a procedure whereby a complete list of all possible items is culled, selecting every *Nth* one until the appropriate amount of items is selected. Multi-family housing units were over sampled as residents of this type of housing typically respond at lower rates to surveys than do those in single-family housing units. Figure 1 displays a map of the households selected to receive the survey. In general, because of the random sampling techniques used, the displayed sampling density will closely mirror the overall housing unit density (which may be different from the population density). While the theory of probability assumes no bias in selection, there may be some minor variations in practice (meaning, an area with only 15% of the housing units might be sampled at an actual rate that is slightly above or below that).

An individual within each household was selected using the birthday method. The birthday method selects a person within the household by asking the "person whose birthday has most recently passed" to complete the questionnaire. The underlying assumption in this method is that day of birth has no relationship to the way people respond to surveys. This instruction was contained in the cover letter accompanying the questionnaire.

Figure 1: Location of Survey Recipients



Survey Administration and Response

Selected households received three mailings, one week apart, beginning in August 2014. The first mailing was a prenotification postcard announcing the upcoming survey. The next mailing contained a letter from the Mayor inviting the household to participate, a questionnaire and a postage-paid return envelope. The final mailing contained a reminder letter, another survey and a postage-paid return envelope. The second cover letter asked those who had not completed the survey to do so and those who had already done so to refrain from turning in another survey. Completed surveys were collected over the following six weeks.

About 2% of the 1,200 surveys mailed were returned because the housing unit was vacant or the postal service was unable to deliver the survey as addressed. Of the remaining 1,174 households that received the survey, 430 completed the survey, providing an overall response rate of 37%; average response rates for a mailed resident survey range from 25% to 40%.

Confidence Intervals

It is customary to describe the precision of estimates made from surveys by a “level of confidence” and accompanying “confidence interval” (or margin of error). A traditional level of confidence, and the one used here, is 95%. The 95% confidence interval can be any size and quantifies the sampling error or imprecision of the survey results because some residents’ opinions are relied on to estimate all residents’ opinions.¹

¹ A 95% confidence interval indicates that for every 100 random samples of this many residents, 95 of the confidence intervals created will include the “true” population response. This theory is applied in practice to mean that the “true” perspective of the target population lies

The margin of error for the City of Ramsey survey is no greater than plus or minus five percentage points around any given percent reported for the entire sample (430 completed surveys).

For subgroups of responses, the margin of error increases because the sample size for the subgroup is smaller. For subgroups of approximately 100 respondents, the margin of error is plus or minus 10 percentage points.

Survey Processing (Data Entry)

Upon receipt, completed surveys were assigned a unique identification number. Additionally, each survey was reviewed and “cleaned” as necessary. For example, a question may have asked a respondent to pick two items out of a list of five, but the respondent checked three; in this case, NRC would use protocols to randomly choose two of the three selected items for inclusion in the dataset.

All surveys then were entered twice into an electronic dataset; any discrepancies were resolved in comparison to the original survey form. Range checks as well as other forms of quality control were also performed.

Survey Data Weighting

The demographic characteristics of the survey sample were compared to those found in the 2010 Census and American Community Survey estimates for adults in the City of Ramsey. The primary objective of weighting survey data is to make the survey sample reflective of the larger population of the community. The characteristics used for weighting were housing tenure, housing unit type, sex and age. The results of the weighting scheme are presented in the following table.

Table 81: Ramsey, MN 2014 Weighting Table

Characteristic	Population Norm	Unweighted Data	Weighted Data
Housing			
Rent home	9%	8%	9%
Own home	91%	92%	91%
Detached unit	82%	75%	82%
Attached unit	18%	25%	18%
Race and Ethnicity			
White	94%	94%	94%
Not white	6%	6%	6%
Not Hispanic	98%	100%	99%
Hispanic	2%	0%	1%
Sex and Age			
Female	50%	57%	50%
Male	50%	43%	50%
18-34 years of age	30%	14%	29%
35-54 years of age	44%	38%	44%
55+ years of age	26%	48%	27%
Females 18-34	15%	9%	15%
Females 35-54	22%	21%	22%
Females 55+	13%	27%	13%
Males 18-34	15%	6%	15%
Males 35-54	22%	17%	22%
Males 55+	13%	21%	13%

within the confidence interval created for a single survey. For example, if 75% of residents rate a service as “excellent” or “good,” then the 4% margin of error (for the 95% confidence interval) indicates that the range of likely responses for the entire community is between 71% and 79%. This source of uncertainty is called sampling error. In addition to sampling error, other sources of error may affect any survey, including the non-response of residents with opinions different from survey responders. Though standardized on The NCS, on other surveys, differences in question wording, order, translation and data entry, as examples, can lead to somewhat varying results.

Survey Data Analysis and Reporting

The survey dataset was analyzed using the Statistical Package for the Social Sciences (SPSS). For the most part, the percentages presented in the reports represent the “percent positive.” The percent positive is the combination of the top two most positive response options (i.e., “excellent” and “good,” “very safe” and “somewhat safe,” “essential” and “very important,” etc.), or, in the case of resident behaviors/participation, the percent positive represents the proportion of respondents indicating “yes” or participating in an activity at least once a month.

On many of the questions in the survey respondents may answer “don’t know.” The proportion of respondents giving this reply is shown in the full set of responses included in Appendix A. However, these responses have been removed from the analyses presented in the reports. In other words, the tables and graphs display the responses from respondents who had an opinion about a specific item.

Appendix D: Survey Materials

Dear Ramsey Resident,

It won't take much of your time to make a big difference!

Your household has been randomly selected to participate in a survey about your community. Your survey will arrive in a few days.

Thank you for helping create a better City!

Sincerely,



Sarah Strommen
Mayor

Dear Ramsey Resident,

It won't take much of your time to make a big difference!

Your household has been randomly selected to participate in a survey about your community. Your survey will arrive in a few days.

Thank you for helping create a better City!

Sincerely,



Sarah Strommen
Mayor

Dear Ramsey Resident,

It won't take much of your time to make a big difference!

Your household has been randomly selected to participate in a survey about your community. Your survey will arrive in a few days.

Thank you for helping create a better City!

Sincerely,



Sarah Strommen
Mayor

Dear Ramsey Resident,

It won't take much of your time to make a big difference!

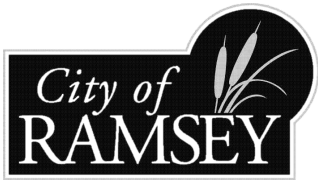
Your household has been randomly selected to participate in a survey about your community. Your survey will arrive in a few days.

Thank you for helping create a better City!

Sincerely,

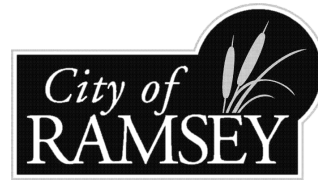


Sarah Strommen
Mayor



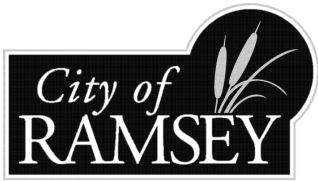
City of Ramsey
7550 Sunwood Drive NW
Ramsey, MN 55303

Presorted
First Class Mail
US Postage
PAID
Boulder, CO
Permit NO. 94



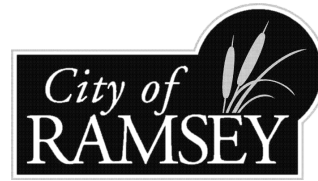
City of Ramsey
7550 Sunwood Drive NW
Ramsey, MN 55303

Presorted
First Class Mail
US Postage
PAID
Boulder, CO
Permit NO. 94



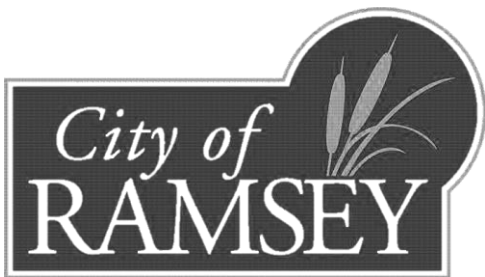
City of Ramsey
7550 Sunwood Drive NW
Ramsey, MN 55303

Presorted
First Class Mail
US Postage
PAID
Boulder, CO
Permit NO. 94



City of Ramsey
7550 Sunwood Drive NW
Ramsey, MN 55303

Presorted
First Class Mail
US Postage
PAID
Boulder, CO
Permit NO. 94



7550 Sunwood Drive NW • Ramsey, MN 55303
City Hall: 763-427-1410 • Fax: 763-427-5543
www.cityoframsey.com

August 2014

Dear Ramsey Resident:

Please help us shape the future of Ramsey! You have been selected at random to participate in the 2014 Ramsey Citizen Survey.

Please take a few minutes to fill out the enclosed survey. Your participation in this survey is very important – especially since your household is one of only a small number of households being surveyed. Your feedback will help Ramsey make decisions that affect our city.

A few things to remember:

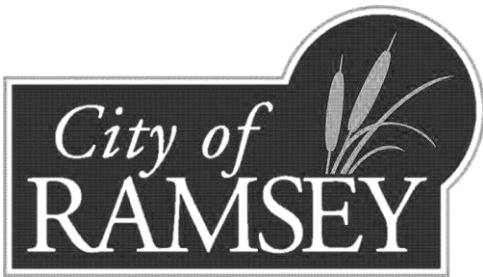
- **Your responses are completely anonymous.**
- In order to hear from a diverse group of residents, the adult 18 years or older in your household who most recently had a birthday should complete this survey.
- **You may return the survey by mail in the enclosed postage-paid envelope.**

If you have any questions about the survey please call 763-433-9868.

Thank you for your time and participation!

Sincerely,

Sarah Strommen
Mayor



7550 Sunwood Drive NW • Ramsey, MN 55303
City Hall: 763-427-1410 • Fax: 763-427-5543
www.cityoframsey.com

August 2014

Dear Ramsey Resident:

Here's a second chance if you haven't already responded to the 2014 Ramsey Citizen Survey! **(If you completed it and sent it back, we thank you for your time and ask you to recycle this survey. Please do not respond twice.)**

Please help us shape the future of Ramsey! You have been selected at random to participate in the 2014 Ramsey Citizen Survey.

Please take a few minutes to fill out the enclosed survey. Your participation in this survey is very important – especially since your household is one of only a small number of households being surveyed. Your feedback will help Ramsey make decisions that affect our city.

A few things to remember:

- **Your responses are completely anonymous.**
- In order to hear from a diverse group of residents, the adult 18 years or older in your household who most recently had a birthday should complete this survey.
- **You may return the survey by mail in the enclosed postage-paid envelope.**

If you have any questions about the survey please call 763-433-9868.

Thank you for your time and participation!

Sincerely,

Sarah Strommen
Mayor

The City of Ramsey 2014 Citizen Survey

Please complete this questionnaire if you are the adult (age 18 or older) in the household who most recently had a birthday. The adult's year of birth does not matter. Please select the response (by circling the number or checking the box) that most closely represents your opinion for each question. Your responses are anonymous and will be reported in group form only.

1. Please rate each of the following aspects of quality of life in Ramsey:

	<i>Excellent</i>	<i>Good</i>	<i>Fair</i>	<i>Poor</i>	<i>Don't know</i>
Ramsey as a place to live	1	2	3	4	5
Your neighborhood as a place to live.....	1	2	3	4	5
Ramsey as a place to raise children	1	2	3	4	5
Ramsey as a place to work.....	1	2	3	4	5
Ramsey as a place to visit.....	1	2	3	4	5
Ramsey as a place to retire	1	2	3	4	5
The overall quality of life in Ramsey	1	2	3	4	5

2. Please rate each of the following characteristics as they relate to Ramsey as a whole:

	<i>Excellent</i>	<i>Good</i>	<i>Fair</i>	<i>Poor</i>	<i>Don't know</i>
Overall feeling of safety in Ramsey.....	1	2	3	4	5
Overall ease of getting to the places you usually have to visit.....	1	2	3	4	5
Quality of overall natural environment in Ramsey	1	2	3	4	5
Overall "built environment" of Ramsey (including overall design, buildings, parks and transportation systems)	1	2	3	4	5
Health and wellness opportunities in Ramsey	1	2	3	4	5
Overall opportunities for education and enrichment.....	1	2	3	4	5
Overall economic health of Ramsey	1	2	3	4	5
Sense of community.....	1	2	3	4	5
Overall image or reputation of Ramsey.....	1	2	3	4	5

3. Please indicate how likely or unlikely you are to do each of the following:

	<i>Very likely</i>	<i>Somewhat likely</i>	<i>Somewhat unlikely</i>	<i>Very unlikely</i>	<i>Don't know</i>
Recommend living in Ramsey to someone who asks.....	1	2	3	4	5
Remain in Ramsey for the next five years	1	2	3	4	5

4. Please rate how safe or unsafe you feel:

	<i>Very safe</i>	<i>Somewhat safe</i>	<i>Neither safe nor unsafe</i>	<i>Somewhat unsafe</i>	<i>Very unsafe</i>	<i>Don't know</i>
In your neighborhood during the day.....	1	2	3	4	5	6
In your neighborhood after dark	1	2	3	4	5	6
In Ramsey's downtown/commercial areas during the day.....	1	2	3	4	5	6
In Ramsey's downtown/commercial areas after dark	1	2	3	4	5	6

5. Please rate each of the following characteristics as they relate to Ramsey as a whole:

	<i>Excellent</i>	<i>Good</i>	<i>Fair</i>	<i>Poor</i>	<i>Don't know</i>
Traffic flow on major streets	1	2	3	4	5
Ease of travel by car in Ramsey.....	1	2	3	4	5
Ease of travel by bicycle in Ramsey	1	2	3	4	5
Ease of walking in Ramsey	1	2	3	4	5
Availability of paths and walking trails	1	2	3	4	5
Cleanliness of Ramsey	1	2	3	4	5
Overall appearance of Ramsey.....	1	2	3	4	5
Public places where people want to spend time	1	2	3	4	5
Variety of housing options	1	2	3	4	5
Availability of affordable quality housing	1	2	3	4	5
Fitness opportunities (including exercise classes and paths or trails, etc.)	1	2	3	4	5
Recreational opportunities.....	1	2	3	4	5
Overall condition of City maintained streets	1	2	3	4	5

6. Please rate each of the following characteristics as they relate to Ramsey as a whole:

	<i>Excellent</i>	<i>Good</i>	<i>Fair</i>	<i>Poor</i>	<i>Don't know</i>
Availability of affordable quality child care/preschool	1	2	3	4	5
K-12 education	1	2	3	4	5
Adult educational opportunities.....	1	2	3	4	5
Opportunities to attend cultural/arts/music activities	1	2	3	4	5
Employment opportunities	1	2	3	4	5
Shopping opportunities.....	1	2	3	4	5
Cost of living in Ramsey	1	2	3	4	5
Overall quality of business and service establishments in Ramsey	1	2	3	4	5
Vibrant downtown/commercial area	1	2	3	4	5
Overall quality of new development in Ramsey	1	2	3	4	5
Opportunities to volunteer.....	1	2	3	4	5
Opportunities to participate in community matters	1	2	3	4	5

7. Please indicate whether or not you have done each of the following in the last 12 months.

	<i>No</i>	<i>Yes</i>
Household member was a victim of a crime in Ramsey	1	2
Reported a crime to the police in Ramsey.....	1	2
Campaigned or advocated for an issue, cause or candidate	1	2
Contacted the City of Ramsey (in-person, phone, email or web) for help or information.....	1	2
Contacted Ramsey elected officials (in-person, phone, email or web) to express your opinion	1	2

8. In the last 12 months, about how many times, if at all, have you or other household members done each of the following in Ramsey?

	<i>2 times a week or more</i>	<i>2-4 times a month</i>	<i>Once a month or less</i>	<i>Not at all</i>
Visited a neighborhood park or City park	1	2	3	4
Attended a City-sponsored event.....	1	2	3	4
Used rail or other public transportation instead of driving.....	1	2	3	4
Walked or biked instead of driving	1	2	3	4
Volunteered your time to some group/activity in Ramsey.....	1	2	3	4

9. Thinking about local public meetings (of local elected officials like City Council or County Commissioners, advisory boards, town halls, HOA, neighborhood watch, etc.), in the last 12 months, about how many times, if at all, have you or other household members attended or watched a local public meeting?

	<i>2 times a week or more</i>	<i>2-4 times a month</i>	<i>Once a month or less</i>	<i>Not at all</i>
<u>Attended</u> a local public meeting	1	2	3	4
<u>Watched</u> (online or on television) a local public meeting.....	1	2	3	4

The City of Ramsey 2014 Citizen Survey

10. Please rate the quality of each of the following services in Ramsey:

	<i>Excellent</i>	<i>Good</i>	<i>Fair</i>	<i>Poor</i>	<i>Don't know</i>
Police services	1	2	3	4	5
Fire services.....	1	2	3	4	5
Crime prevention.....	1	2	3	4	5
Fire prevention and education.....	1	2	3	4	5
Traffic enforcement	1	2	3	4	5
Street repair	1	2	3	4	5
Street cleaning	1	2	3	4	5
Street lighting.....	1	2	3	4	5
Snow removal	1	2	3	4	5
Sidewalk maintenance	1	2	3	4	5
Traffic signal timing.....	1	2	3	4	5
Storm drainage	1	2	3	4	5
Drinking water.....	1	2	3	4	5
Sewer services	1	2	3	4	5
City parks.....	1	2	3	4	5
Recreation centers or facilities	1	2	3	4	5
Land use, planning and zoning.....	1	2	3	4	5
Code enforcement (weeds, abandoned buildings, etc.)	1	2	3	4	5
Animal control	1	2	3	4	5
Economic development	1	2	3	4	5
Public information services	1	2	3	4	5
Preservation of natural areas such as open space, farmlands and greenbelts.....	1	2	3	4	5
Overall customer service by Ramsey employees (police, receptionists, planners, etc.).....	1	2	3	4	5
Trail maintenance.....	1	2	3	4	5

11. Overall, how would you rate the quality of the services provided by the following?

	<i>Excellent</i>	<i>Good</i>	<i>Fair</i>	<i>Poor</i>	<i>Don't know</i>
The City of Ramsey.....	1	2	3	4	5

12. Please rate the following categories of Ramsey government performance:

	<i>Excellent</i>	<i>Good</i>	<i>Fair</i>	<i>Poor</i>	<i>Don't know</i>
The value of services for the taxes paid to Ramsey.....	1	2	3	4	5
The overall direction that Ramsey is taking	1	2	3	4	5
The job Ramsey government does at welcoming citizen involvement	1	2	3	4	5
Overall confidence in Ramsey government.....	1	2	3	4	5
Generally acting in the best interest of the community	1	2	3	4	5
Being honest.....	1	2	3	4	5
Treating all residents fairly	1	2	3	4	5
Development and success of a strategic action plan.....	1	2	3	4	5

13. Please rate how important, if at all, you think it is for the Ramsey community to focus on each of the following in the coming two years:

	<i>Essential</i>	<i>Very important</i>	<i>Somewhat important</i>	<i>Not at all important</i>
Overall feeling of safety in Ramsey.....	1	2	3	4
Overall ease of getting to the places you usually have to visit.....	1	2	3	4
Quality of overall natural environment in Ramsey.....	1	2	3	4
Overall “built environment” of Ramsey (including overall design, buildings, parks and transportation systems).....	1	2	3	4
Health and wellness opportunities in Ramsey.....	1	2	3	4
Overall opportunities for education and enrichment.....	1	2	3	4
Overall economic health of Ramsey.....	1	2	3	4
Sense of community.....	1	2	3	4

14. To what extent are each of the following a source of information for you about Ramsey city government and its activities?

	<i>Major source</i>	<i>Moderate source</i>	<i>Minor source</i>	<i>Not a source</i>
City newsletter (Ramsey Resident).....	1	2	3	4
Local newspaper.....	1	2	3	4
City website (www.cityoframsey.com).....	1	2	3	4
Word-of-mouth.....	1	2	3	4
Cable television (QCTV).....	1	2	3	4
City employees.....	1	2	3	4
Public meetings.....	1	2	3	4
City social media (Facebook).....	1	2	3	4

15. Please rate the quality of each event listed below:

	<i>Excellent</i>	<i>Good</i>	<i>Fair</i>	<i>Poor</i>	<i>Don't know/ don't attend</i>
Happy Days Festival.....	1	2	3	4	5
Pet Clinics.....	1	2	3	4	5
Kids Safety Camp.....	1	2	3	4	5
The Draw Music in the Park Series.....	1	2	3	4	5
Spring/Fall recycling events.....	1	2	3	4	5
Spring Business Expo.....	1	2	3	4	5
Annual Nite to Unite event.....	1	2	3	4	5

16. Ramsey’s hometown festival, Happy Days, is organized by the volunteer Happy Days Committee. To what extent do you agree or disagree with each of the following statements about the event?

	<i>Strongly agree</i>	<i>Somewhat agree</i>	<i>Somewhat disagree</i>	<i>Strongly disagree</i>
I like the name “Happy Days Festival”.....	1	2	3	4
The name “Happy Days Festival” should be changed.....	1	2	3	4

17. The City is developing a long-term street reconstruction program for maintaining over 174 miles of public streets throughout Ramsey which will require a reliable funding source. Please indicate to what extent you would support or oppose each of the following funding options for this purpose:

	<i>Strongly support</i>	<i>Somewhat support</i>	<i>Somewhat oppose</i>	<i>Strongly oppose</i>	<i>Don't know</i>
Property tax increases.....	1	2	3	4	5
Special assessments from benefitting properties to re-pay the City for 20% or more of applicable project costs, typically over 5 to 15 years.....	1	2	3	4	5
Electric and/or gas utility fee increases, approximately \$8 per utility, per month.....	1	2	3	4	5

18. If you wish, you may note any additional comments or suggestions that you would like to make here:

The City of Ramsey 2014 Citizen Survey

Our last questions are about you and your household. Again, all of your responses to this survey are completely anonymous and will be reported in group form only.

D1. How often, if at all, do you do each of the following, considering all of the times you could?

	<i>Never</i>	<i>Rarely</i>	<i>Sometimes</i>	<i>Usually</i>	<i>Always</i>
Recycle at home	1	2	3	4	5
Purchase goods or services from a business located in Ramsey.....	1	2	3	4	5
Vote in local elections.....	1	2	3	4	5

D2. Would you say that in general your health is:

- Excellent
 Very good
 Good
 Fair
 Poor

D3. What impact, if any, do you think the economy will have on your family income in the next 6 months? Do you think the impact will be:

- Very positive
 Somewhat positive
 Neutral
 Somewhat negative
 Very negative

D4. What is your employment status?

- Working full time for pay
 Working part time for pay
 Unemployed, looking for paid work
 Unemployed, not looking for paid work
 Fully retired

D5. Do you work inside the boundaries of Ramsey?

- Yes, outside the home
 Yes, from home
 No

D6. How many years have you lived in Ramsey?

- Less than 2 years
 11-20 years
 2-5 years
 More than 20 years
 6-10 years

D7. Which best describes the building you live in?

- One family house detached from any other houses
 Building with two or more homes (duplex, townhome, apartment or condominium)
 Mobile home
 Other

D8. Is this house, apartment or mobile home...

- Rented
 Owned

D9. About how much is your monthly housing cost for the place you live (including rent, mortgage payment, property tax, property insurance and homeowners' association (HOA) fees)?

- Less than \$300 per month
 \$300 to \$599 per month
 \$600 to \$999 per month
 \$1,000 to \$1,499 per month
 \$1,500 to \$2,499 per month
 \$2,500 or more per month

D10. Do any children 17 or under live in your household?

- No
 Yes

D11. Are you or any other members of your household aged 65 or older?

- No
 Yes

D12. How much do you anticipate your household's total income before taxes will be for the current year? (Please include in your total income money from all sources for all persons living in your household.)

- Less than \$25,000
 \$25,000 to \$49,999
 \$50,000 to \$99,999
 \$100,000 to \$149,999
 \$150,000 or more

Please respond to both questions D13 and D14:

D13. Are you Spanish, Hispanic or Latino?

- No, not Spanish, Hispanic or Latino
 Yes, I consider myself to be Spanish, Hispanic or Latino

D14. What is your race? (Mark one or more races to indicate what race you consider yourself to be.)

- American Indian or Alaskan Native
 Asian, Asian Indian or Pacific Islander
 Black or African American
 White
 Other

D15. In which category is your age?

- 18-24 years
 55-64 years
 25-34 years
 65-74 years
 35-44 years
 75 years or older
 45-54 years

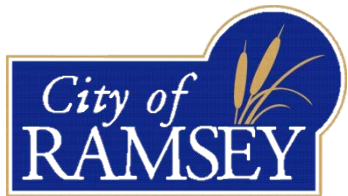
D16. What is your sex?

- Female
 Male

D17. Do you consider a cell phone or land line your primary telephone number?

- Cell
 Land line
 Both

Thank you for completing this survey. Please return the completed survey in the postage-paid envelope to: National Research Center, Inc., PO Box 549, Belle Mead, NJ 08502



City of Ramsey
7550 Sunwood Drive NW
Ramsey, MN 55303

Presorted
First Class Mail
US Postage
PAID
Boulder, CO
Permit NO.94