



Elmcrest Park
Ramsey, Minnesota

Elmcrest Park

Ramsey, Minnesota





Elmcrest Park
Ramsey, Minnesota

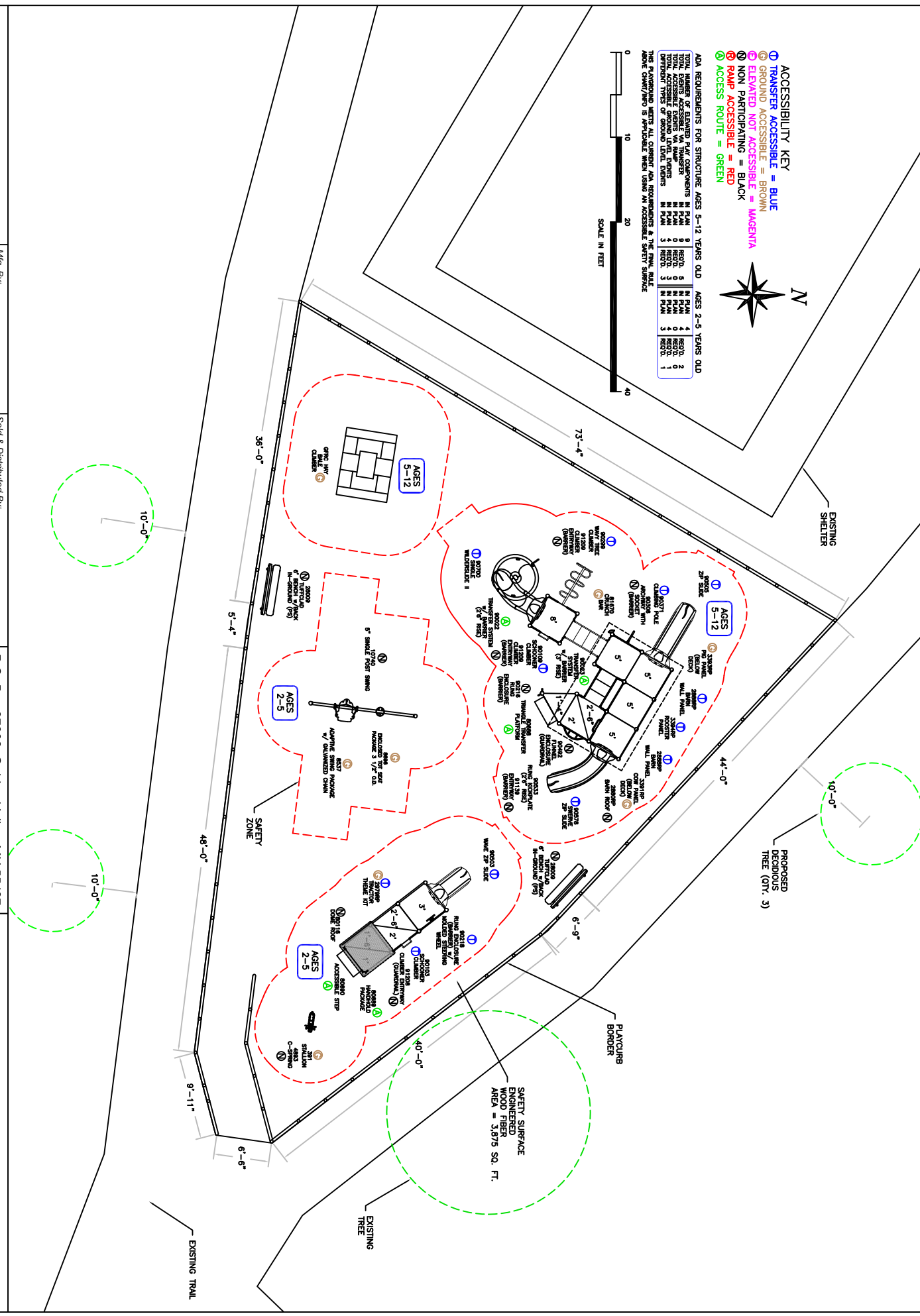
ACCESSIBILITY KEY

- TRANSFER ACCESSIBLE = BLUE
- GROUND ACCESSIBLE = BROWN
- ELEVATED NOT ACCESSIBLE = MAGENTA
- NON PARTICIPATING = BLACK
- RAIP ACCESSIBLE = RED
- ACCESS ROUTE = GREEN

ADA REQUIREMENTS FOR STRUCTURE AGES 5-12 YEARS OLD AGES 2-5 YEARS OLD

TYPE	IN PLAN	RECD.	TYPE	IN PLAN	RECD.
TOTAL TRANSFER ACCESSIBLE	9	0	TOTAL TRANSFER ACCESSIBLE	4	0
TOTAL GROUND ACCESSIBLE	0	0	TOTAL GROUND ACCESSIBLE	0	0
TOTAL ELEVATED NOT ACCESSIBLE	0	0	TOTAL ELEVATED NOT ACCESSIBLE	0	0
TOTAL NON PARTICIPATING	0	0	TOTAL NON PARTICIPATING	0	0
TOTAL RAIP ACCESSIBLE	3	3	TOTAL RAIP ACCESSIBLE	3	1

THIS PLAYGROUND MEETS ALL CURRENT ADA REQUIREMENTS & THE FINAL RULE ABOVE CHART/NO IS APPLICABLE WHEN USING AN ACCESSIBLE SURFACE.



THIS PRINT IS THE PROPERTY OF MINNESOTA WISCONSIN PLAYGROUND INC. AND IS NOT TO BE USED, COPIED OR REPRODUCED WITHOUT THEIR EXPRESSED WRITTEN PERMISSION.

Mfg. By: **GameTime** Enriching Childhood Through Play.

Sold & Distributed By: **MINNESOTA WISCONSIN PLAYGROUND**

P.O. Box 27328, Golden Valley, MN 55427
 763-546-7787 1-800-622-5425
 Fax 763-546-5050
 E-Mail info@mnwplay.com

Elmcrest Park
 Ramsey, Minnesota

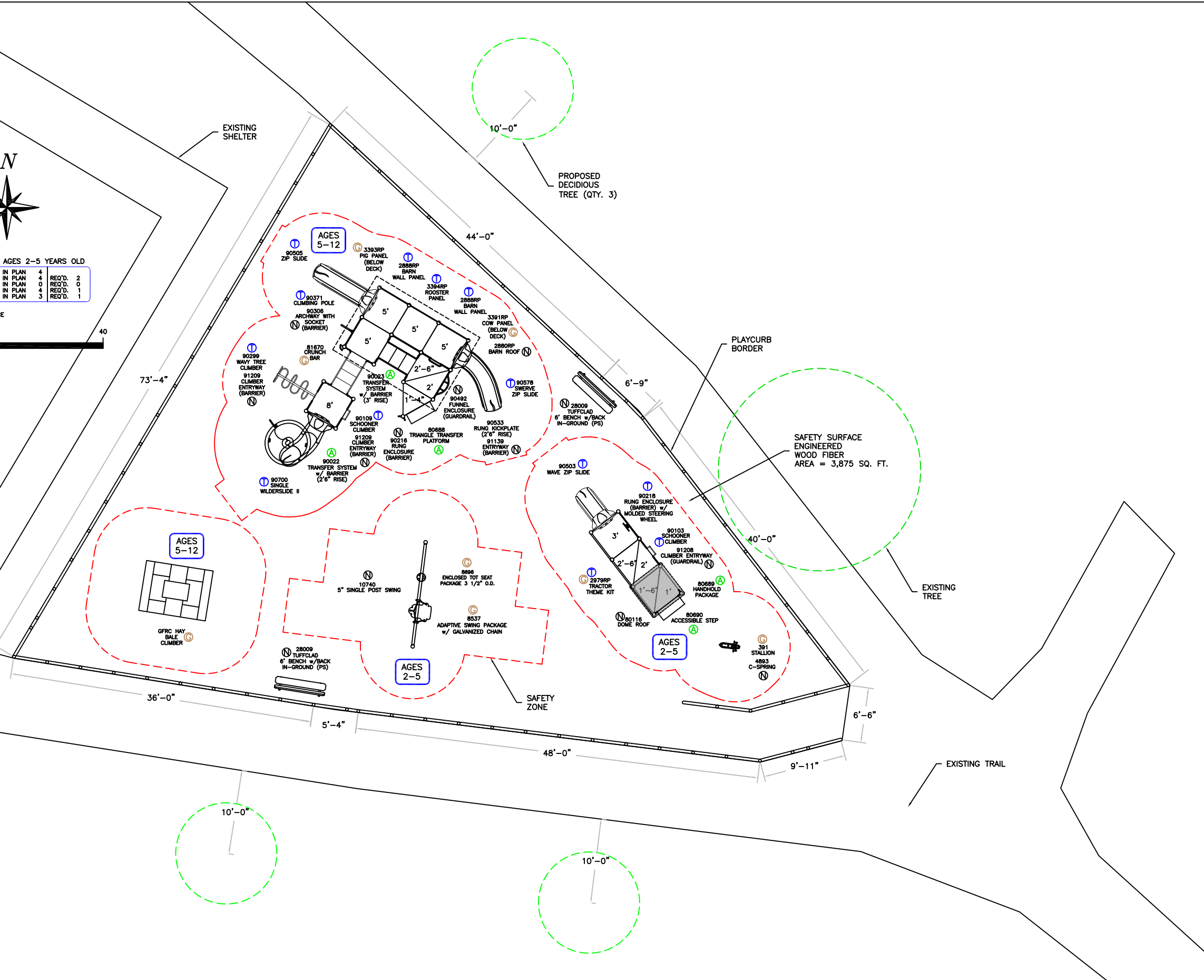
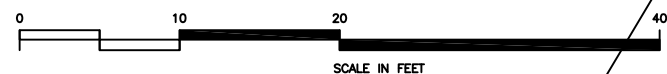
SCALE: 1" = 15'-0"
 5/1/15
 INC. D7367H

- ACCESSIBILITY KEY**
- ① TRANSFER ACCESSIBLE = BLUE
 - Ⓢ GROUND ACCESSIBLE = BROWN
 - Ⓜ ELEVATED NOT ACCESSIBLE = MAGENTA
 - Ⓝ NON PARTICIPATING = BLACK
 - Ⓡ RAMP ACCESSIBLE = RED
 - Ⓜ ACCESS ROUTE = GREEN



ADA REQUIREMENTS FOR STRUCTURE AGES 5-12 YEARS OLD				AGES 2-5 YEARS OLD			
TOTAL NUMBER OF ELEVATED PLAY COMPONENTS	IN PLAN 9	REQ'D. 5	IN PLAN 4	REQ'D. 2			
TOTAL EVENTS ACCESSIBLE VIA TRANSFER	IN PLAN 9	REQ'D. 0	IN PLAN 0	REQ'D. 0			
TOTAL ACCESSIBLE EVENTS VIA RAMP	IN PLAN 0	REQ'D. 3	IN PLAN 4	REQ'D. 1			
TOTAL ACCESSIBLE GROUND LEVEL EVENTS	IN PLAN 4	REQ'D. 3	IN PLAN 3	REQ'D. 1			
DIFFERENT TYPES OF GROUND LEVEL EVENTS	IN PLAN 3	REQ'D. 3	IN PLAN 3	REQ'D. 1			

THIS PLAYGROUND MEETS ALL CURRENT ADA REQUIREMENTS & THE FINAL RULE ABOVE CHART/INFO IS APPLICABLE WHEN USING AN ACCESSIBLE SAFETY SURFACE



Mfg. By: **GameTime**
Enriching Childhood Through Play.

Sold & Distributed By: **MINNESOTA WISCONSIN PLAYGROUND**

P.O. Box 27328, Golden Valley, MN 55427
763-546-7787 1-800-622-5425
Fax 763-546-5050
E-Mail info@mnwiplay.com

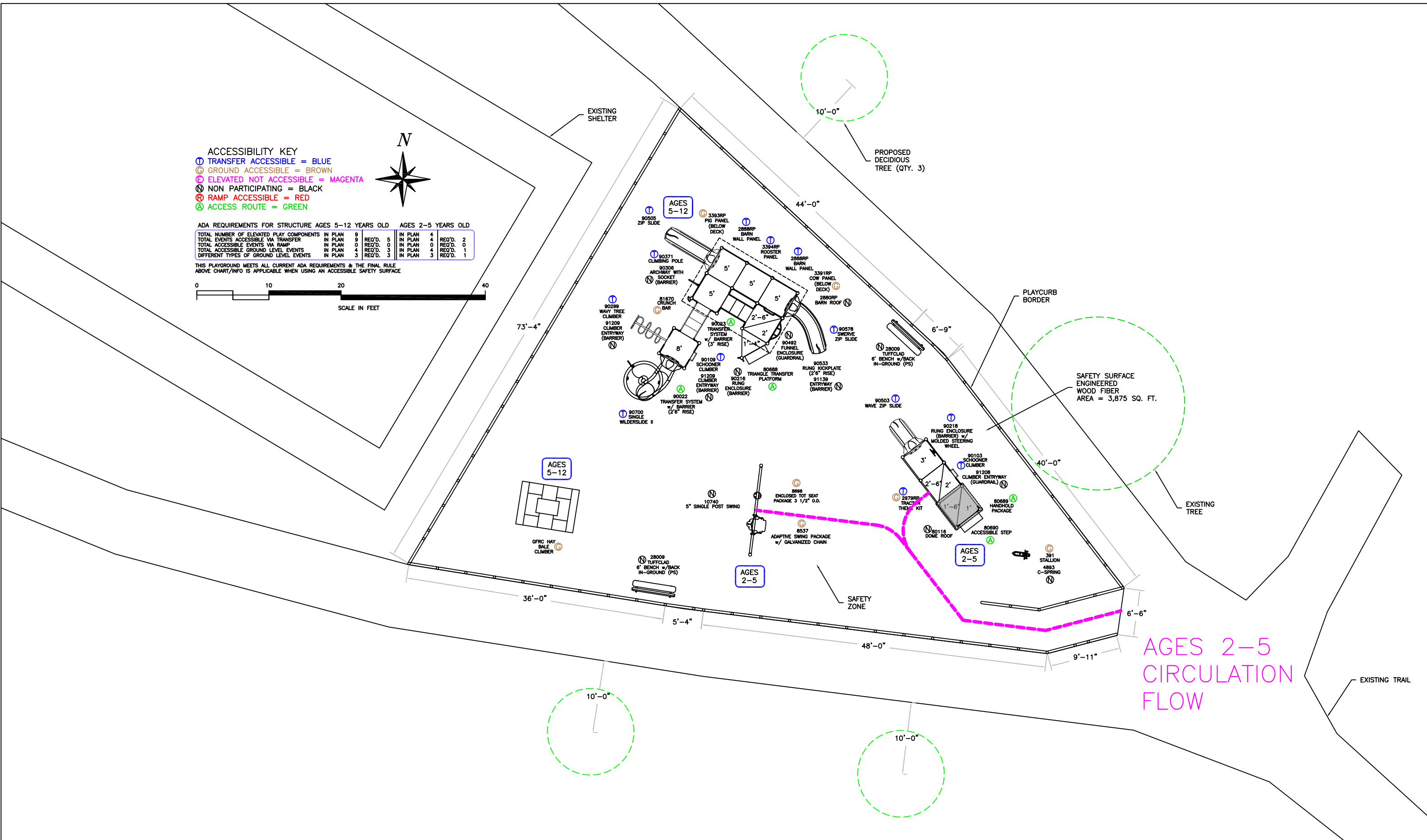
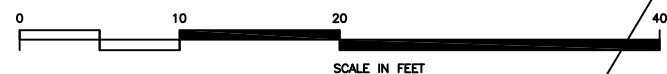
Elmcrest Park
Ramsey, Minnesota
SCALE: 1" = 12'-0" 5/1/15 DWG. NO. D7367H

- ACCESSIBILITY KEY**
- ① TRANSFER ACCESSIBLE = BLUE
 - Ⓢ GROUND ACCESSIBLE = BROWN
 - Ⓜ ELEVATED NOT ACCESSIBLE = MAGENTA
 - Ⓝ NON PARTICIPATING = BLACK
 - Ⓡ RAMP ACCESSIBLE = RED
 - Ⓜ ACCESS ROUTE = GREEN



ADA REQUIREMENTS FOR STRUCTURE AGES 5-12 YEARS OLD				AGES 2-5 YEARS OLD			
TOTAL NUMBER OF ELEVATED PLAY COMPONENTS	IN PLAN 9	REQ'D. 5	IN PLAN 4	REQ'D. 2			
TOTAL EVENTS ACCESSIBLE VIA TRANSFER	IN PLAN 9	REQ'D. 0	IN PLAN 0	REQ'D. 0			
TOTAL ACCESSIBLE EVENTS VIA RAMP	IN PLAN 0	REQ'D. 3	IN PLAN 4	REQ'D. 1			
TOTAL ACCESSIBLE GROUND LEVEL EVENTS	IN PLAN 4	REQ'D. 3	IN PLAN 3	REQ'D. 1			
DIFFERENT TYPES OF GROUND LEVEL EVENTS	IN PLAN 3	REQ'D. 3	IN PLAN 3	REQ'D. 1			

THIS PLAYGROUND MEETS ALL CURRENT ADA REQUIREMENTS & THE FINAL RULE ABOVE CHART/INFO IS APPLICABLE WHEN USING AN ACCESSIBLE SAFETY SURFACE



AGES 2-5
CIRCULATION
FLOW

Mfg. By:
GameTime
Enriching Childhood Through Play.

Sold & Distributed By:
MINNESOTA WISCONSIN PLAYGROUND

P.O. Box 27328, Golden Valley, MN 55427
763-546-7787 1-800-622-5425
Fax 763-546-5050
E-Mail info@mnwiplay.com

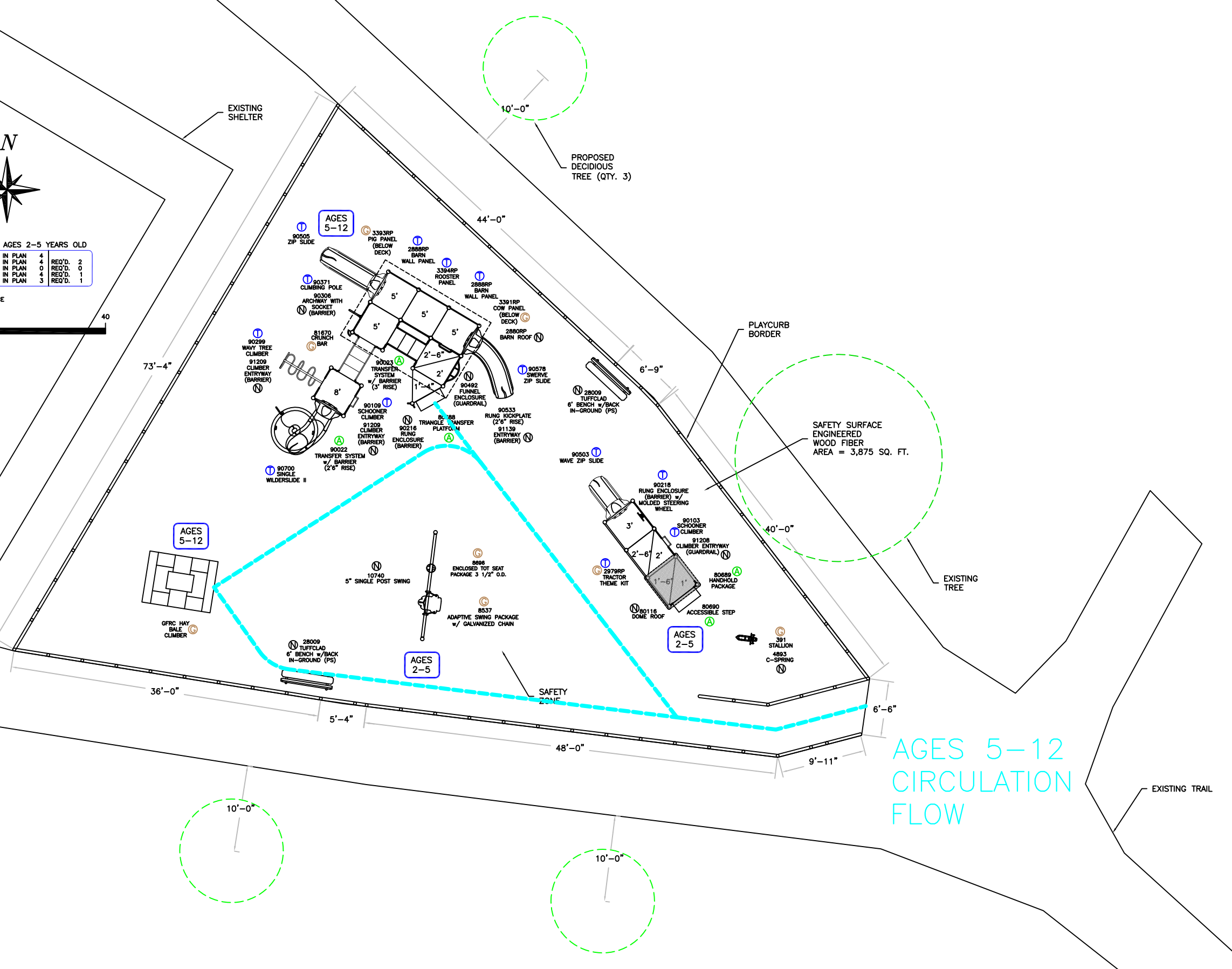
Elmcrest Park
Ramsey, Minnesota
SCALE: 1" = 12'-0" 5/1/15 DWG. NO. D7367H

- ACCESSIBILITY KEY**
- ① TRANSFER ACCESSIBLE = BLUE
 - Ⓢ GROUND ACCESSIBLE = BROWN
 - Ⓜ ELEVATED NOT ACCESSIBLE = MAGENTA
 - Ⓝ NON PARTICIPATING = BLACK
 - Ⓡ RAMP ACCESSIBLE = RED
 - Ⓜ ACCESS ROUTE = GREEN



ADA REQUIREMENTS FOR STRUCTURE AGES 5-12 YEARS OLD				AGES 2-5 YEARS OLD			
TOTAL NUMBER OF ELEVATED PLAY COMPONENTS	IN PLAN 9	REQ'D. 5	IN PLAN 4	REQ'D. 2			
TOTAL EVENTS ACCESSIBLE VIA TRANSFER	IN PLAN 0	REQ'D. 0	IN PLAN 0	REQ'D. 0			
TOTAL ACCESSIBLE EVENTS VIA RAMP	IN PLAN 4	REQ'D. 3	IN PLAN 4	REQ'D. 1			
TOTAL ACCESSIBLE GROUND LEVEL EVENTS	IN PLAN 3	REQ'D. 3	IN PLAN 3	REQ'D. 1			
DIFFERENT TYPES OF GROUND LEVEL EVENTS	IN PLAN 3	REQ'D. 3	IN PLAN 3	REQ'D. 1			

THIS PLAYGROUND MEETS ALL CURRENT ADA REQUIREMENTS & THE FINAL RULE ABOVE CHART/INFO IS APPLICABLE WHEN USING AN ACCESSIBLE SAFETY SURFACE



**AGES 5-12
CIRCULATION
FLOW**

Mfg. By:
GameTime
Enriching Childhood Through Play.

Sold & Distributed By:
**MINNESOTA WISCONSIN
PLAYGROUND**

P.O. Box 27328, Golden Valley, MN 55427
763-546-7787 1-800-622-5425
Fax 763-546-5050
E-Mail info@mnwiplay.com

Elmcrest Park
Ramsey, Minnesota
SCALE: 1" = 12'-0" 5/1/15 DWG. NO. D7367H

Elmcrest Park D7367H

City of Ramsey
 Attn: Mark Riverblood
 7550 Sunwood Drive NW
 Ramsey, MN 55303
 mriverblood@cityoframsey.com

Ship To Zip: 55303

Quantity	Part #	Description	Unit Price	Amount
1	RDU	GameTime - PowerScope 5-12 unit. (5) 80000 -- 49" Sq Punched Steel Deck (1) 80078 -- 6"Stepped Platform (1) 80688 -- 2' Tri Transfer Platform (1) 81670 -- Crunch Bar (1) 90022 -- 2'-6" Transfer System w/ Barrier (1) 90023 -- 3'-0" Transfer System w/ Barrier (1) 90109 -- 7'-6"/8' Schooner Climber (1) 90216 -- Rung Enclosure w/Barrier, Above Dk (2) 90266 -- 8' Upright, Alum (1) 90268 -- 10' Upright, Alum (8) 90269 -- 11' Upright, Alum (2) 90270 -- 12' Upright, Alum (4) 90272 -- 14' Upright, Alum (1) 90299 -- 7'-6"/8' Wavy Tree Climber (1) 90306 -- Climber Archway w/Socket & Barrier (1) 90371 -- 4'/5' Climbing Pole (1) 90492 -- Funnel Enclosure w/Guardrail (1) 90505 -- 5' Single Zip Slide (1) 90533 -- 2'-6" Rung Kickplate (1) 90578 -- Swerve Slide (1) 90700 -- Single Entrance WilderSlide II (1) 90705 -- Right Curve Section WilderSlide II (1) 90706 -- Exit Section WilderSlide II (2) 90708 -- Helix Spiral (helix adapter) (1) 90709 -- Support WilderSlide II (1) 90718 -- Slide Support (1) 90776 -- Outrigger WilderSlide II (1) 91139 -- Entryway - Barrier (2) 91209 -- Climber Entryway - Barrier	\$19,487.98	\$19,487.98
1	RDU	PlayWorx GT - Custom PlayWorx GT. (1) 2979RP -- Tractor Theme Kit (1) 3391RP -- Cow Panel	\$23,247.50	\$23,247.50

Elmcrest Park D7367H

Quantity	Stock ID	Description	Unit Price	Amount
		(1) 3394RP -- Rooster Panel		
		(1) 3393RP -- Pig Panel		
		(1) 2880RP -- Barn Roof		
		(2) 2888RP -- Barn Wall Panel		
1	RDU	GameTime - PowerScope 2-5 unit.	\$6,772.35	\$6,772.35
		(1) 80000 -- 49" Sq Punched Steel Deck		
		(2) 80078 -- 6"Stepped Platform		
		(1) 80116 -- Dome Roof		
		(1) 80689 -- Handhold Package		
		(1) 80690 -- 6" Accessible Step		
		(1) 90103 -- 2' Schooner Climber		
		(1) 90218 -- Rung Encl Mold S. Whl & Bar,Above Dk		
		(3) 90267 -- 9' Upright, Alum		
		(3) 90269 -- 11' Upright, Alum		
		(1) 90503 -- 2'-6"/3' Single Wave Zip Slide		
		(1) 91208 -- Climber Entryway - Guardrail		
		(1) G90267 -- 9' Upright, Galv		
		(1) G90269 -- 11' Upright, Galv		
1	HB	PlayWorx GFRC - Hay Bale	\$10,000.00	\$10,000.00
1	RDU	GameTime - Single-post swing unit.	\$1,456.00	\$1,456.00
		(1) 8537 -- Adaptive Swing w/Chain		
		(1) 8696 -- Encl Seat 3 1/2"(8696)		
		(1) 10740 -- Single Post Swing F/S, 5" Od		
1	RDU	GameTime - Spring Rider.	\$994.00	\$994.00
		(1) 391 -- Stallion Only		
		(1) 4893 -- "C"Spring-Loose Fill		
2	28009	GameTime - 6' P/S Bench W/Back Inground	\$505.00	\$1,010.00
1	EFW - 10L	EWFLGE - Lump Sum - 10" compressed depth engineered wood fiber surfacing.	\$3,576.00	\$3,576.00
2	161290	GameTime - Geo-Textile 2250 Sq Ft Roll	\$604.00	\$1,208.00
4	161294	GameTime - Terraflow Drain 150' Roll	\$408.00	\$1,632.00
1	161293	GameTime - Terraflow Drain 75' Roll	\$204.00	\$204.00
1	178749	GameTime - Owner's Kit	\$50.00	\$50.00
69	4860	GameTime - 12"Playcurb Pkg	\$47.00	\$3,243.00
5	6217	GameTime - 12" Adaptable End Playcurb	\$48.00	\$240.00

Elmcrest Park D7367H

SubTotal: \$73,120.83
Freight: \$4,625.17
Total Amount: \$77,746.00

This quotation is subject to polices in the current Gametime Park and Playground catalog and the following terms and conditions. Our quotation is based on shipment of all items at one time to a single destination, unless noted, and changes are subject to price adjustment. Purchases in excess of \$1,000.00 to be supported by your written purchase order made out to Gametime, c/o Minnesota/Wisconsin Playground.

Pricing: f.o.b. factory, firm for 30 days from date of quotation. Sales tax, if applicable, will be added at time of invoice unless a tax exempt certificate is provided at time of order entry.

Payment terms: net 30 days for tax supported governmental agencies. A 1.5% per month finance charge will be imposed on all past due accounts. Equipment shall be invoiced separately from other services and shall be payable in advance of those services and project completion. Retainage not accepted.

Shipment: order shall ship within 30-45 days after GameTime's receipt and acceptance of your purchase order, color selections, approved submittals, and receipt of deposit, if required.

Freight charges: Prepaid & added

Exclusions: unless specifically included, this quotation excludes all site work and landscaping; removal of existing equipment; acceptance of equipment and off-loading; storage of goods prior to installation; equipment assembly and installation; safety surfacing; borders and drainage provisions.

Acceptance of quotation:

Accepted By (printed): _____

P.O. No: _____

Signature: _____

Date: _____

Title: _____

Phone: _____

Facsimile: _____

Purchase Amount: **\$77,746.00**

Elmcrest Park D7367H - Install

City of Ramsey
 Attn: Mark Riverblood
 7550 Sunwood Drive NW
 Ramsey, MN 55303
 mriverblood@cityoframsey.com

Ship To Zip: 55303

Quantity	Part #	Description	Unit Price	Amount
1	INS	Lump Sum - Install play equipment, border, drainage base, fabric, surfacing material, and (qty. 3) 3" diameter maple shade trees w/ mulch around base. - <i>Site restoration not included. Maintenance of trees is the responsibility of the owner.</i>	\$12,254.00	\$12,254.00
			SubTotal:	\$12,254.00
			Total Amount:	\$12,254.00

This quotation is subject to polices in the current Gametime Park and Playground catalog and the following terms and conditions. Our quotation is based on shipment of all items at one time to a single destination, unless noted, and changes are subject to price adjustment. Purchases in excess of \$1,000.00 to be supported by your written purchase order made out to Gametime, c/o Minnesota/Wisconsin Playground.

Pricing: f.o.b. factory, firm for 30 days from date of quotation. Sales tax, if applicable, will be added at time of invoice unless a tax exempt certificate is provided at time of order entry.

Payment terms: net 30 days for tax supported governmental agencies. A 1.5% per month finance charge will be imposed on all past due accounts. Equipment shall be invoiced separately from other services and shall be payable in advance of those services and project completion. Retainage not accepted.

Shipment: order shall ship within 30-45 days after GameTime's receipt and acceptance of your purchase order, color selections, approved submittals, and receipt of deposit, if required.

Freight charges: Prepaid & added

Exclusions: unless specifically included, this quotation excludes all site work and landscaping; removal of existing equipment; acceptance of equipment and off-loading; storage of goods prior to installation; equipment assembly and installation; safety surfacing; borders and drainage provisions.

Acceptance of quotation:

Accepted By (printed): _____

P.O. No: _____

Signature: _____

Date: _____

Title: _____

Phone: _____

Facsimile: _____

Purchase Amount: **\$12,254.00**

