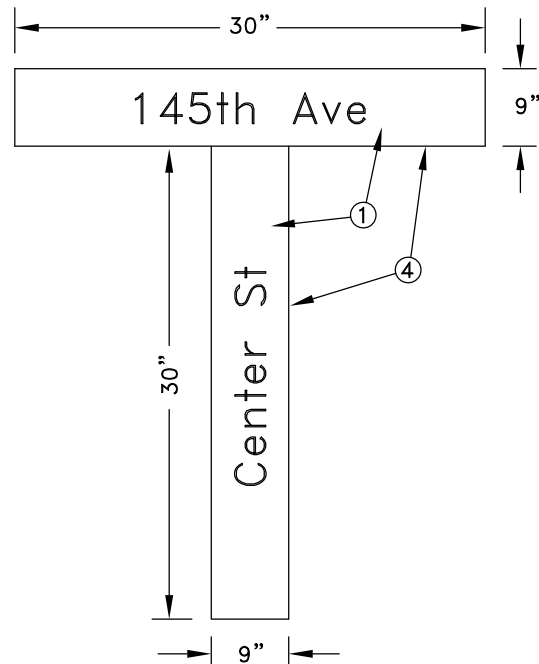
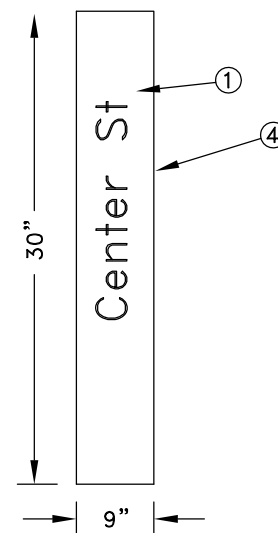


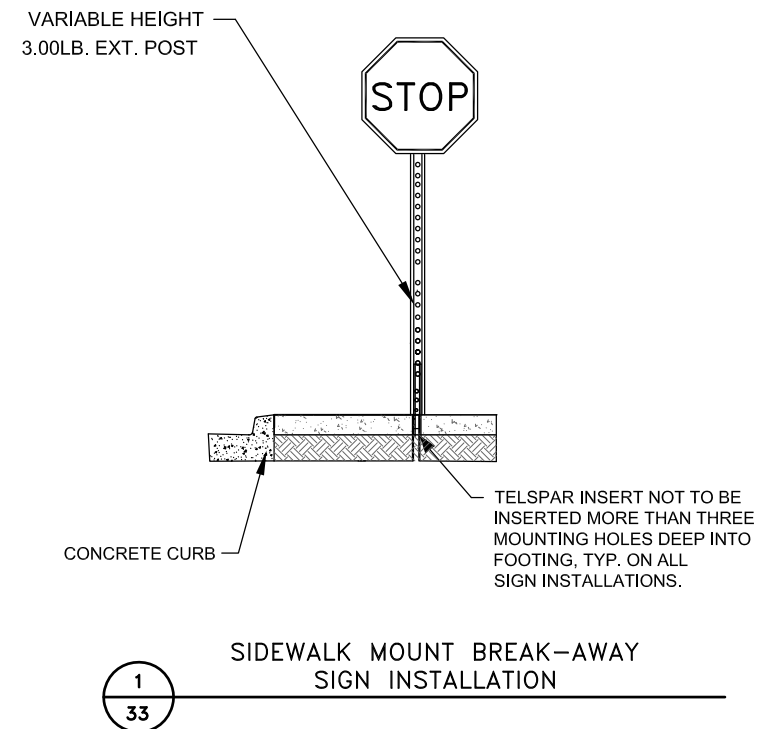
SIGN 1 DETAIL ⑤
NO SCALE



SIGN 2 DETAIL ⑤
NO SCALE



SIGN 3 DETAIL ⑤
NO SCALE



SIDEWALK MOUNT BREAK-AWAY
SIGN INSTALLATION

SIGN LEGEND	SIGN NUMBER	SIGN SIZE	SIGN MESSAGE	SIGN COLOR ⑥	POSTS			MOUNTING HEIGHT (FEET) ⑦	REMARKS	ESTIMATED QUANTITY
					NUMBER AND TYPE	NUMBER OF KNEE BRACES	LENGTH (FEET)			
	R1-1	30"X30"	STOP	WHITE ON RED	2-U		13.5	7.5		2
	R7-8m	12"X18"	HANDICAP PARKING	WHITE ON BLUE	2-U		13.5	7.5		1
1		48"X9" 48"X9"	CENTER STREET ① SUNWOOD DRIVE ⑨	WHITE ON GREEN		②③		7.5	SEE DETAIL ON THIS SHEET	1
2		48"X9" 48"X9"	CENTER STREET ① 145TH AVE NW ⑨	WHITE ON GREEN		②③		7.5	SEE DETAIL ON THIS SHEET	1
3		48"X9"	CENTER STREET ①	WHITE ON GREEN		②③		7.5	SEE DETAIL ON THIS SHEET	3 ⑧

GENERAL NOTES:

- ALL SIGNS SHALL HAVE TYPE IX SHEETING UNLESS NOTED.
- SIGNS SHALL BE PAID PER ITEM 2564-SIGN PANELS TYPE C, UNLESS NOTED.
- SIGNS CONSTRUCTED IN THE SIDEWALK SHALL BE CONSTRUCTED PER ①/③③.

REFERENCE NOTES:

- ALL STREET NAME SIGNS SHALL HAVE 6" AND 4 1/2" LETTERING FOR UPPERCASE AND LOWERCASE LETTERS, RESPECTIVELY. SERIES "B" LETTERING AND NUMBERING SHALL BE USED WITH 75% SPACING.
- MOUNTING BRACKETS SHALL BE E-450 FOURWAY BRACKET OR EQUAL.
- MOUNTING POSTS SHALL BE 2.5" O.D. BY 10' GALVANIZED TUBE. POSTS SHALL BE IMBEDDED IN A 12" DIAMETER BY 24" DEEP CONCRETE FOOTING. CONCRETE MIX 3Y43 SHALL BE USED FOR THE FOOTING.
- SIGN PLATES SHALL BE SINGLE FACED CONSTRUCTED OF 0.100 ALUMINUM TYPE IX SHEETING.
- SIGN SHALL BE PAID PER ITEM 2564-SIGN PANELS TYPE SPECIAL.
- SIGN COLOR SHALL BE AS SHOWN IN THE MNDOT STANDARD SIGNS MANUAL, UNLESS NOTED.
- MOUNTING HEIGHT IS A MINIMUM, SEE SHEET 43 FOR TYPICAL MOUNTING DETAILS.
- A SINGLE "CENTER STREET" SIGN SHALL BE INSTALLED TO REPLACE EXISTING "E TOWN CENTER DR" SIGNS, LOCATED AT INTERSECTION WITH RAMSEY PARKWAY (2) AND BUNKER LAKE BOULEVARD (1). AS SUCH, 3 ADDITIONAL 48"X9" SIGNS ARE REQUIRED.
- ALL STREET NAME SIGNS SHALL BE NOTCHED AND PUNCHED AND HAVE A 3/8" WHITE BORDER.

Aug 20, 2014 - 4:47pm
K:\oad_eng\PROJECTS\MUNICIPAL\RA3184.dwg\RA3184_STRIPING.dwg

DATE	REVISION
8/18/14	BID SET

I hereby certify that this plan, specification, or report was prepared by me or under my direct supervision and that I am a duly Licensed Professional Engineer under the laws of the State of Minnesota.

Shane Nelson
SHANE NELSON, PE
Date 7/16/14 Lic. No. 43381

DESIGNED BY:
AMT
DRAWN BY:
AMT
CHECKED BY:
SMN

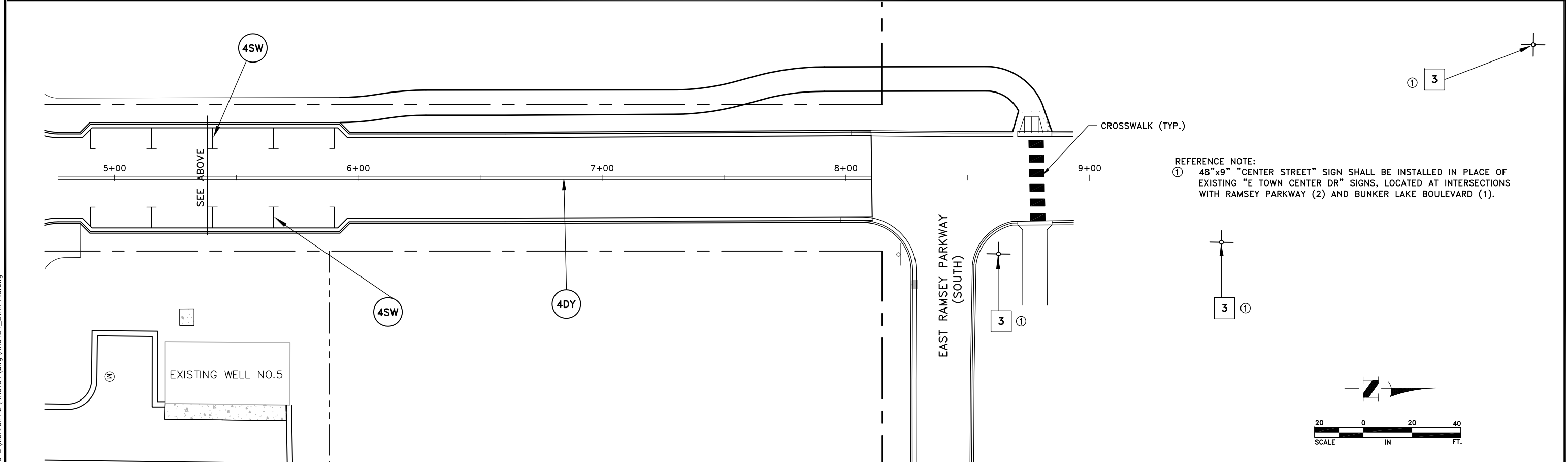
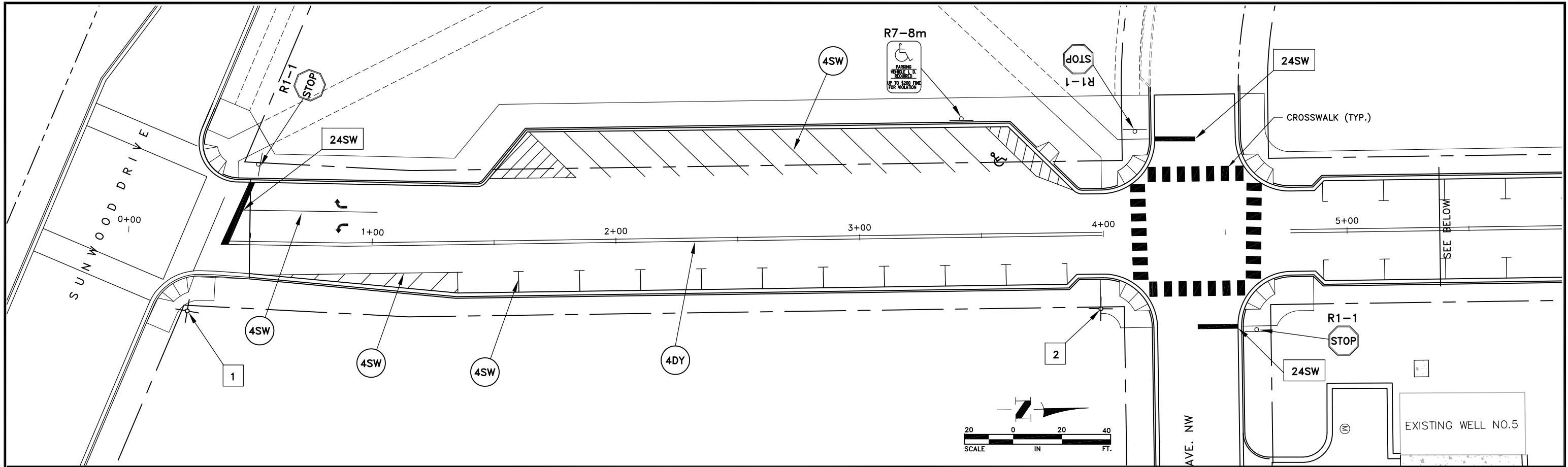


Hakanson Anderson
Civil Engineers and Land Surveyors
3601 Thurston Ave., Anoka, Minnesota 55303
763-427-5860 FAX 763-427-0520
www.hakanson-anderson.com

CENTER STREET

SIGNAGE LEGEND
AND NOTES
RAMSEY, MINNESOTA

SHEET 33 OF 39 SHEETS
RA3184



REFERENCE NOTE:
 ① 48"x9" "CENTER STREET" SIGN SHALL BE INSTALLED IN PLACE OF EXISTING "E TOWN CENTER DR" SIGNS, LOCATED AT INTERSECTIONS WITH RAMSEY PARKWAY (2) AND BUNKER LAKE BOULEVARD (1).

Aug 20, 2014 - 5:36pm K:\oad_eng\PROJECTS\MUNICIPAL\RA3184.dwg\RA3184_STRIPING.dwg

DATE	REVISION
8/18/14	BID SET

I hereby certify that this plan, specification, or report was prepared by me or under my direct supervision and that I am a duly Licensed Professional Engineer under the laws of the State of Minnesota.
 SHANE NELSON, PE
 Date 7/16/14 Lic. No. 43381

DESIGNED BY: AMT
 DRAWN BY: AMT
 CHECKED BY: SMN



Hakanson Anderson
 Civil Engineers and Land Surveyors
 3601 Thurston Ave., Anoka, Minnesota 55303
 763-427-5860 FAX 763-427-0520
 www.hakanson-anderson.com

CENTER STREET

STRIPING & SIGNAGE PLAN
 RAMSEY, MINNESOTA

SHEET 34 OF 39 SHEETS
 RA3184