



Metropolitan Council Update

City Council Work Session: December 9, 2014

Who is Ramsey?

Mission

- ▶ Work together to responsibly grow our community, and to provide quality, cost-effective, and efficient government services.

Vision

- ▶ Achieve economic vitality with strategic infrastructure investments through market-driven growth.

Ramsey's Goals and Imperatives

Goals/Imperatives

Financial Stability

Ensure strategic economic development that complements the City's desired quality of life and builds a stable tax base, all while maintaining a low tax levy

A Connected Community

Ensure that the city is a connected city that is part of a comprehensive regional transportation system that enables all to easily navigate the community and attracts business development

Smart, Citizen-Focused Government

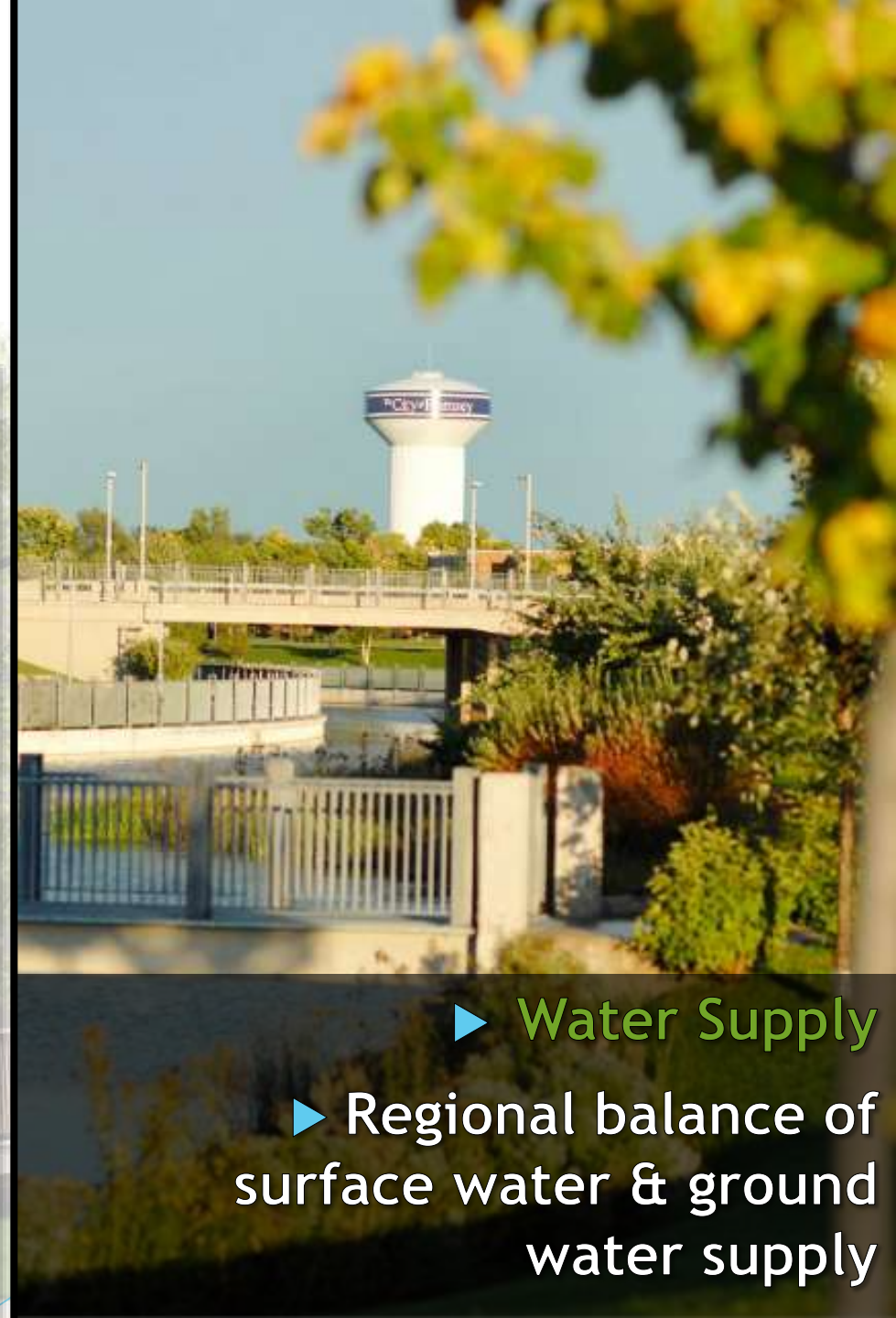
Continue the delivery of quality services to ensure the city will have safe and thriving neighborhoods and business districts, and a clean environment

An Effective Organization

Maintain a highly functional staff, citizen volunteers, and elected officials and governance structure that meets the ever-changing, increasing needs of the organization

Regional System Priorities: City of Ramsey

- ▶ Transportation
- ▶ US Highway 10
- ▶ Trunk Highway 47 (State)
- ▶ Bicycle and Pedestrian Connections



- ▶ Water Supply
- ▶ Regional balance of surface water & ground water supply

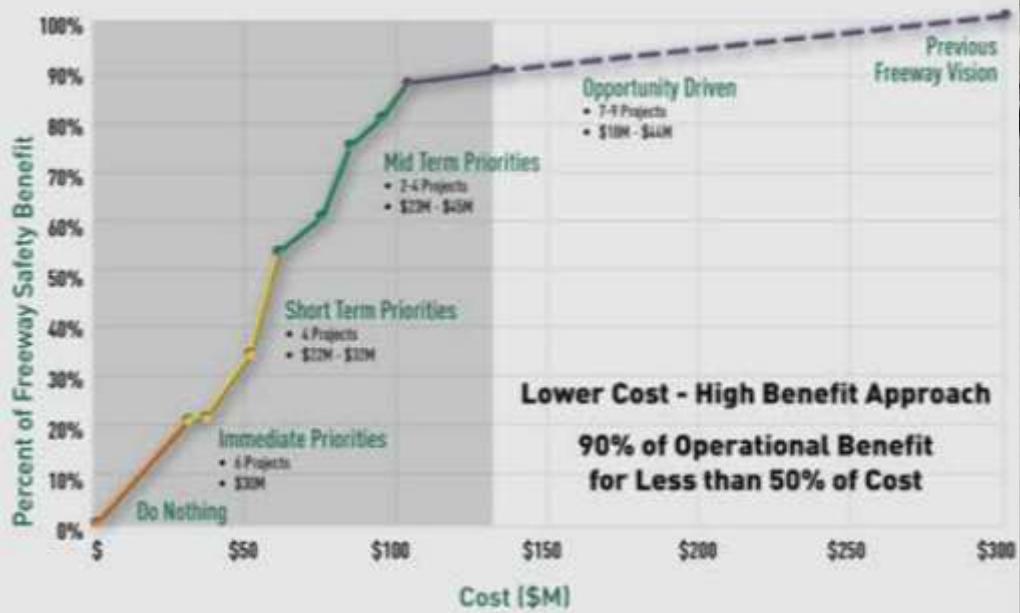
Responses to Regional Planning Documents

- ▶ ThriveMSP 2040
- ▶ Household, Population, and Employment Forecasts
- ▶ Transportation Policy Plan
- ▶ Parks Policy Plan
- ▶ Housing Policy Plan
- ▶ Water Resources Policy Plan [upcoming]

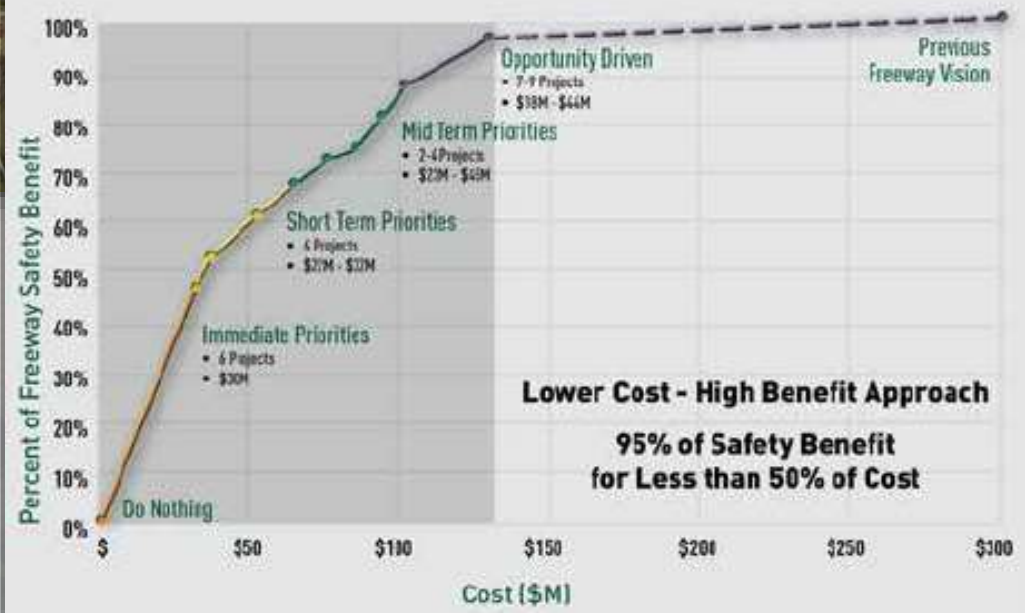
Highway 10 Access Planning Study



Operation Benefit-vs-Project Cost



Safety Benefit-vs-Project Cost



Highway 10 Access Planning Study



Minnesota Department of Transportation
Metro District
1500 County Road B2 W
Roseville, MN 55113-3174

August 15, 2014

Re: MnDOT Support for Highway 10 Access Planning Study

The Highway 10 Access Planning Study responds to corridor and community needs—and to the fiscal reality that MnDOT and our partner agencies face.

The study shows we can achieve 90% of the safety and operational benefit of a freeway, for less than 50% of the cost. Pursuing lower-cost, high-benefit investments is consistent with MnDOT's commitment to serve the public by Enhancing Financial Effectiveness. It also supports the Metropolitan Council's call for transportation strategies that are realistic, innovative, flexible, and focused.

The study benefited from extensive outreach that helped us better understand issues and tailor solutions to community expectations. Outreach included public open houses, business and property owner workshops, City Council workshops, a study advisory committee with representatives from several agencies, and a design charrette.

The study's implementation plan prioritizes study recommendations with a focus on right-sized, fundable-scale projects. Improvements can be made incrementally as funding becomes available, rather than doing nothing while waiting to fund a megaproject. The study is consistent with the Metropolitan Council's Transportation Policy Plan, thereby improving eligibility for regional funding. While the hard work of securing funding remains, with this study MnDOT and our partners are much better positioned to address the challenges along Highway 10 than before.

MnDOT supports the recommendations of the Highway 10 Access Planning Study. We are committed to working with our partner agencies to pursue funding for these projects from a variety of sources. The recommendations include improvements on Highway 10 itself and improvements to the supporting network of local connections. State, Federal, County and City funding will all have roles to play in making the improvements. Projects will require MnDOT leadership as well as local leadership. MnDOT is eager to continue the momentum of this study by working with our partners to secure funding and deliver projects.


Scott McBride
Metro District Engineer

An Equal Opportunity Employer



August 21, 2014

Paul Jung
Minnesota Department of Transportation
Metro Division
1500 West CO Rd B-2
Roseville, MN 55113

Dear Mr. Jung:

The Metropolitan Transportation Services division of the Metropolitan Council wishes to express its support of the Highway 10 Access Planning Study recently conducted by the Minnesota Department of Transportation in partnership with Anoka County, the cities of Ramsey and Anoka, and the Council. The philosophy upon which the study approach was based is in keeping with the lower cost/high benefit policy expressed in the Council's Transportation Policy Plan.

The study should be considered a "role model" by other corridors in the region. The approach of considering less traditional improvement strategies to balance funding limitation realities with the need to find solutions resulted in a series of smaller, implementable projects with large positive impacts. The program of projects outlined in the study combine to provide 90% to 95% of the safety and mobility benefits of the previous freeway proposal for roughly a third of the cost.

This letter of support does not predispose any future required Council review of projects. Specifically, all interchange projects on Highway 10 will need a joint MnDOT/Metropolitan Council Highway Interchange Request committee review. Specific projects may also be subject to the Metropolitan Council controlled access highway approval as outlined in Minnesota statute 473.166.

The Council appreciates the efforts by all study partners and looks forward to the eventual implementation of the projects identified in the Highway 10 Access Planning Study.

Sincerely,



Arlene McCarthy
Director, Metropolitan Transportation Services

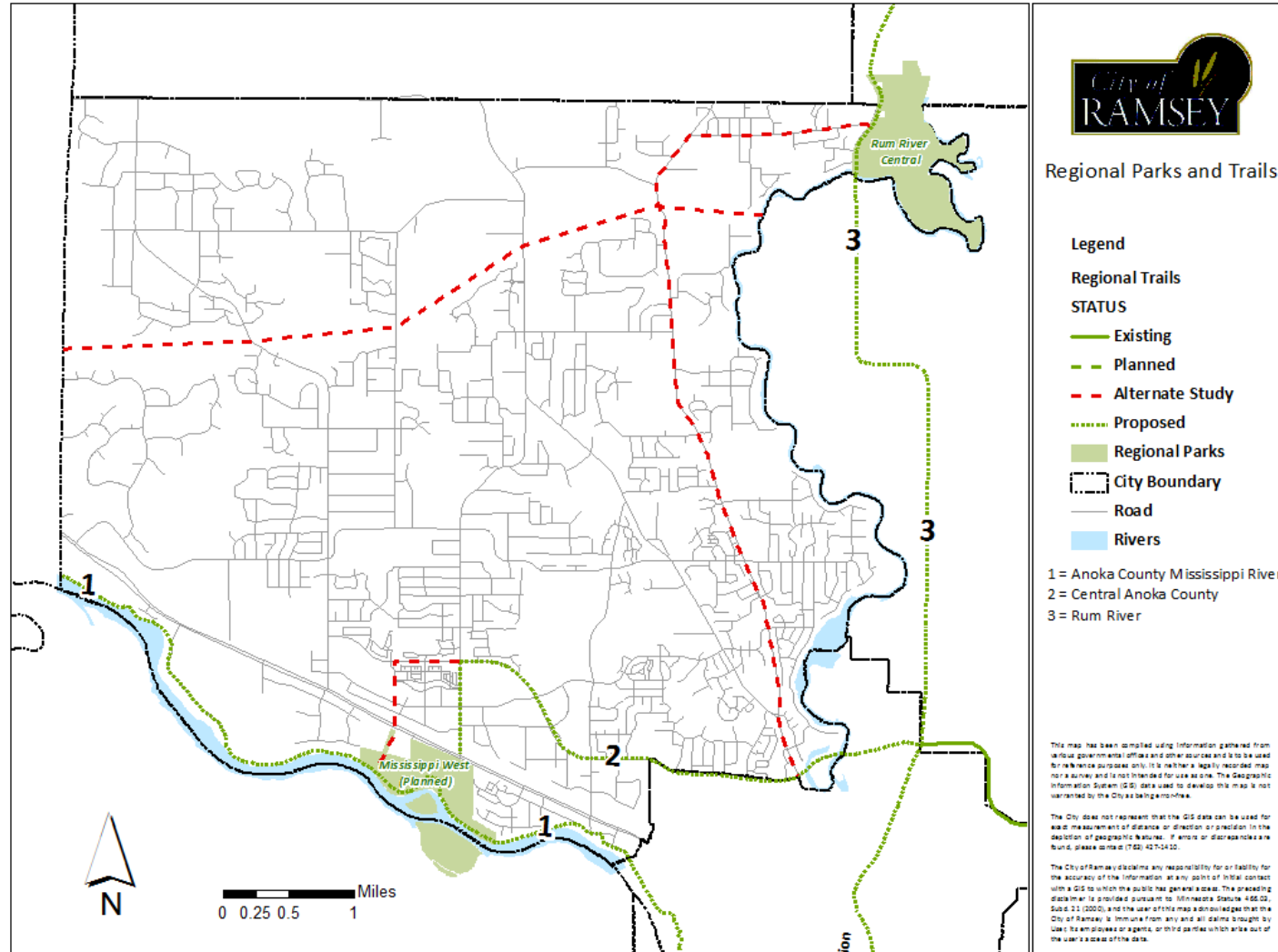
Cc: Lona Schreiber, Metropolitan Council District 15
Edward Reynoso, Metropolitan Council District 9
Mark Filipi, MTS Manager

301 Robert Street North | St. Paul, MN 55101-1006
Phone: 651.800.1000 | Fax: 651.800.1666 | TTY: 651.231.0904 | metroconnect@mn.gov
An Equal Opportunity Employer

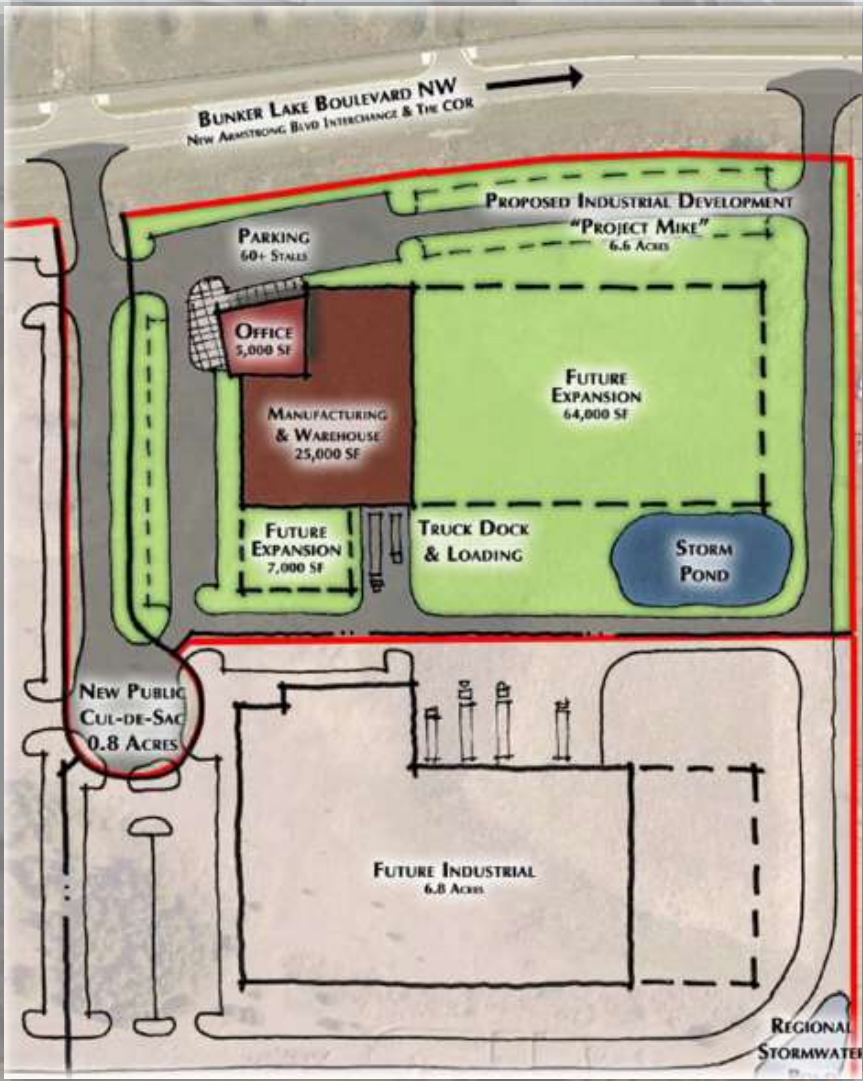


A Connected Community

Regional Parks and Trails



Employment Growth



Household Growth



Success Stories of Ramsey



Success Stories of Ramsey



Livable Communities Program Involvement



Success Stories of Ramsey



Success Stories of Ramsey



Success Stories of Ramsey



Success Stories of Ramsey

