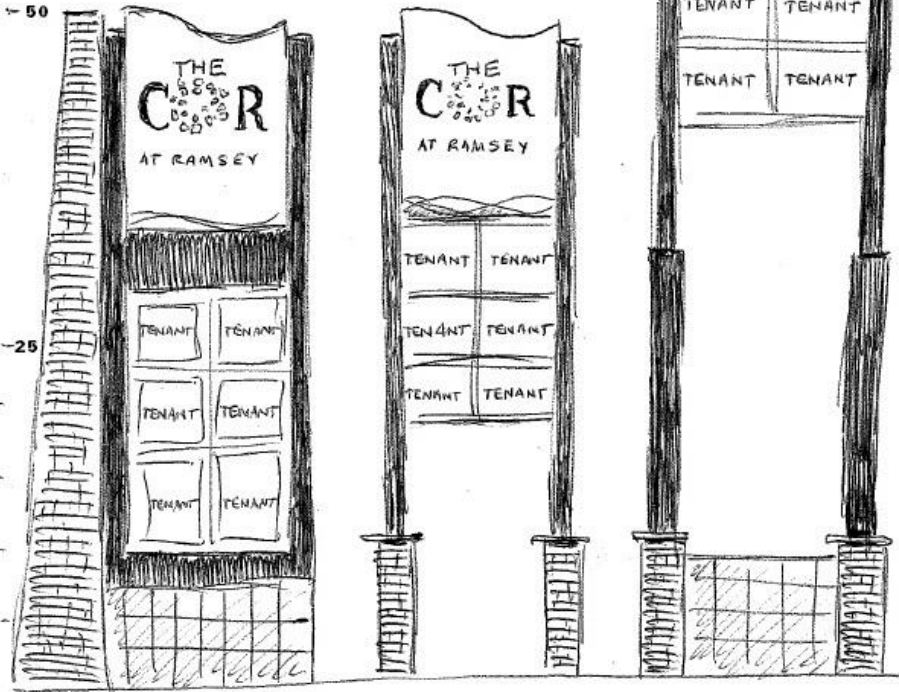


DEVELOPMENT SIGN
(Formerly Community Sign)

50-75' in height
300 sq. ft. in area



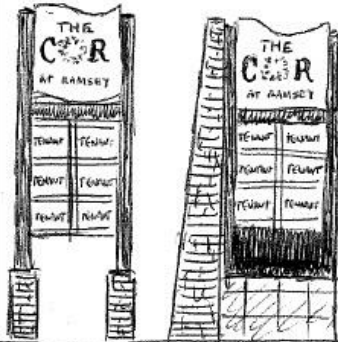
TRANSIT FACILITY SIGN

EAST SIDE SIGN

WEST SIDE SIGN (75')

GATEWAY SIGN

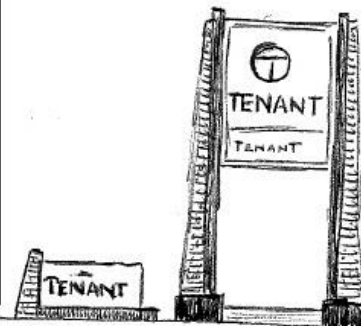
25' in height
50 sq. ft. in area



PRIVATE FREESTANDING SIGN
(Formerly Project Sign)

6' in height
25 sq. ft. in area

with CUP:
25' in height
100 sq. ft. in area



SHARED MULTIPLE TENANT SIGN

with CUP:
50' in height
300 sq. ft. in area

