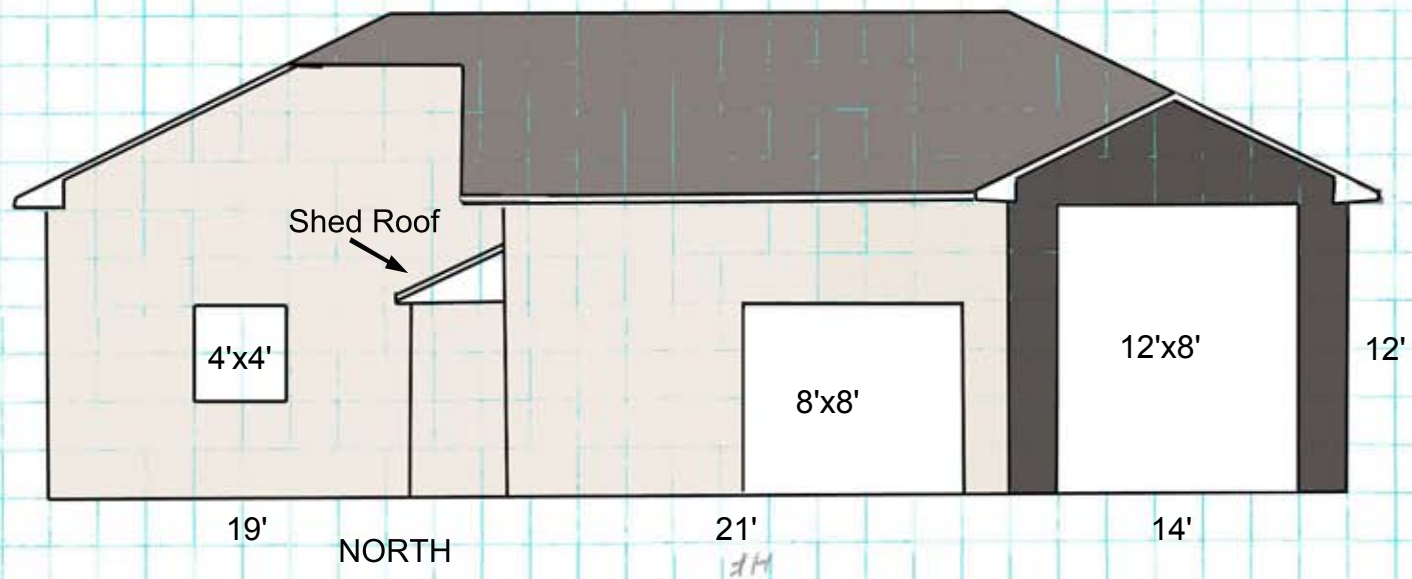
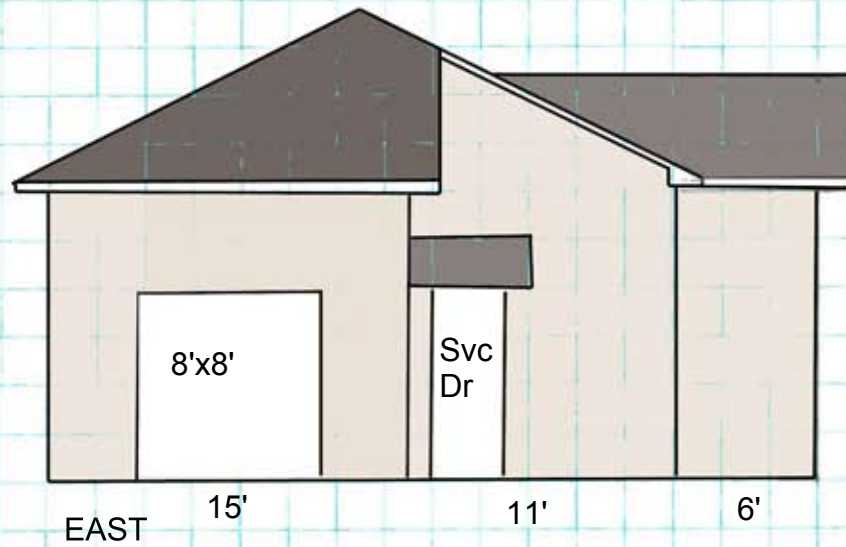


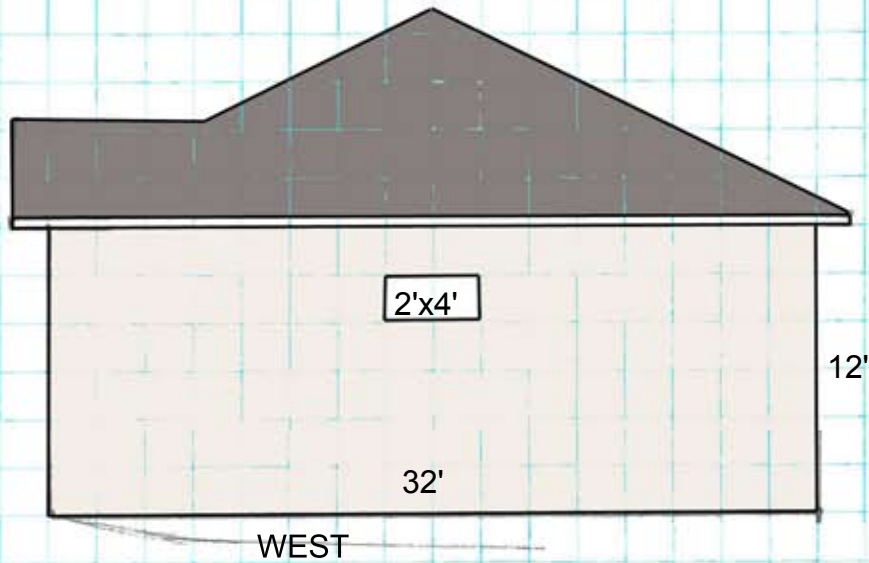
# Millner Garage Plan Elevation

■ = 2'X2'

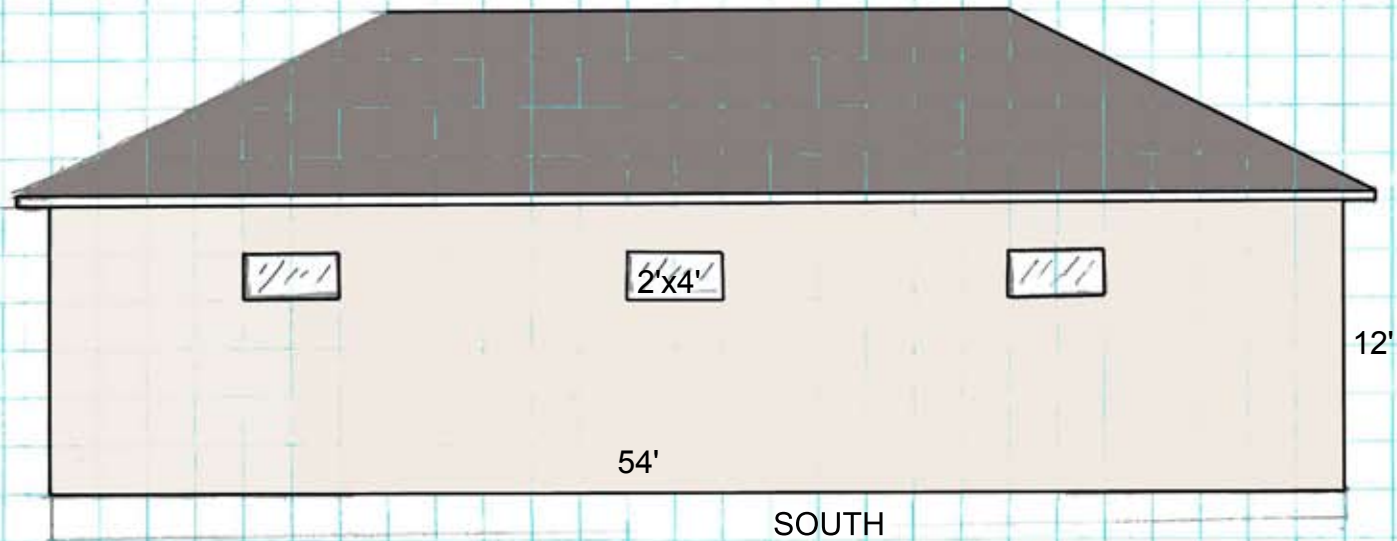


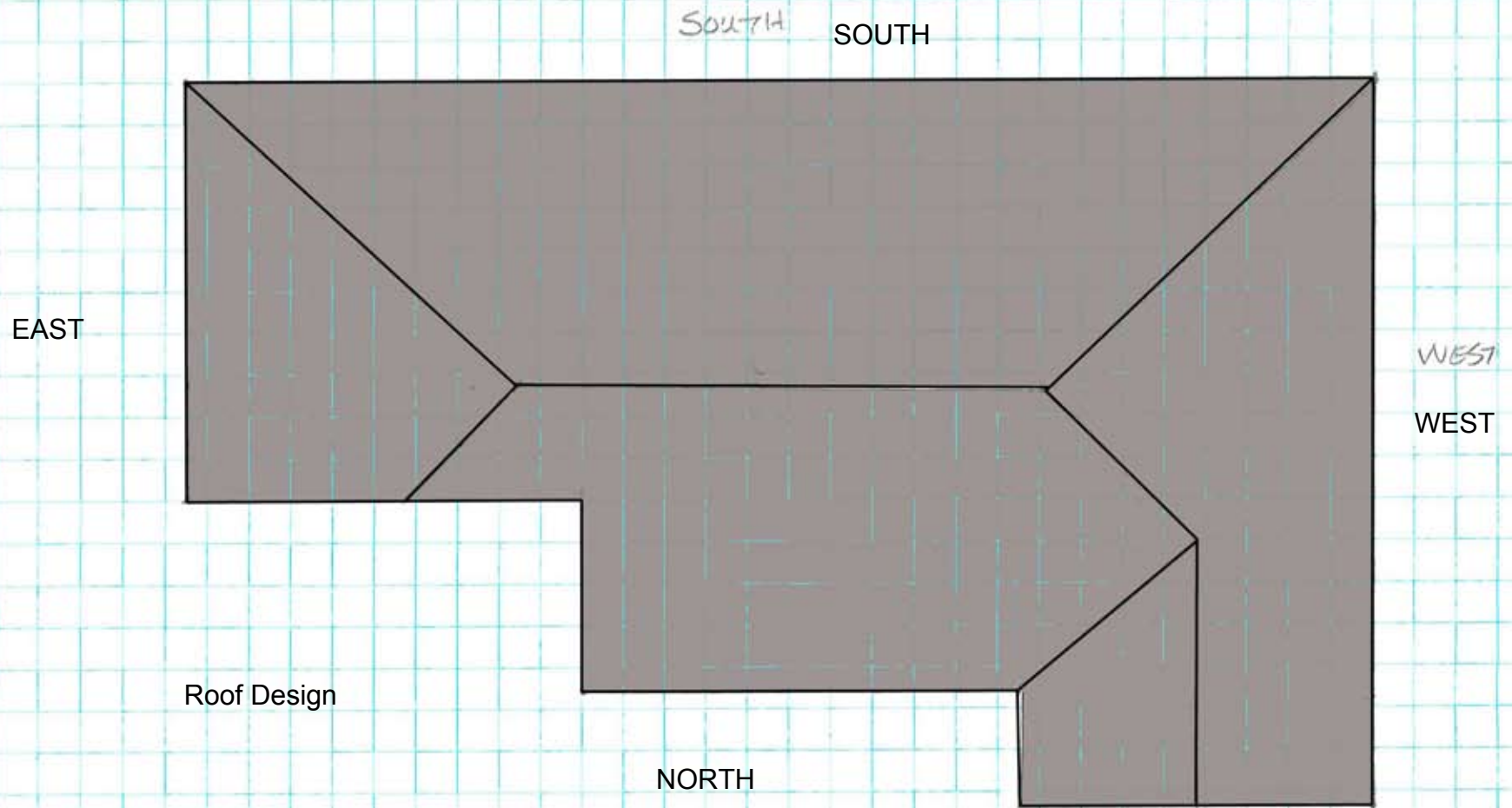
Millner Garage Plan Elevation

Roof Pitch = 7/12  
Sidewall max height 13'  
Siding Finish = to match House  
Shingles = Architectural to match House  
Soffit Over-hang 18"  
Fascia = 6"  
For Footing Detail see Exhibit A



□ 2'x2'





# Exhibit A

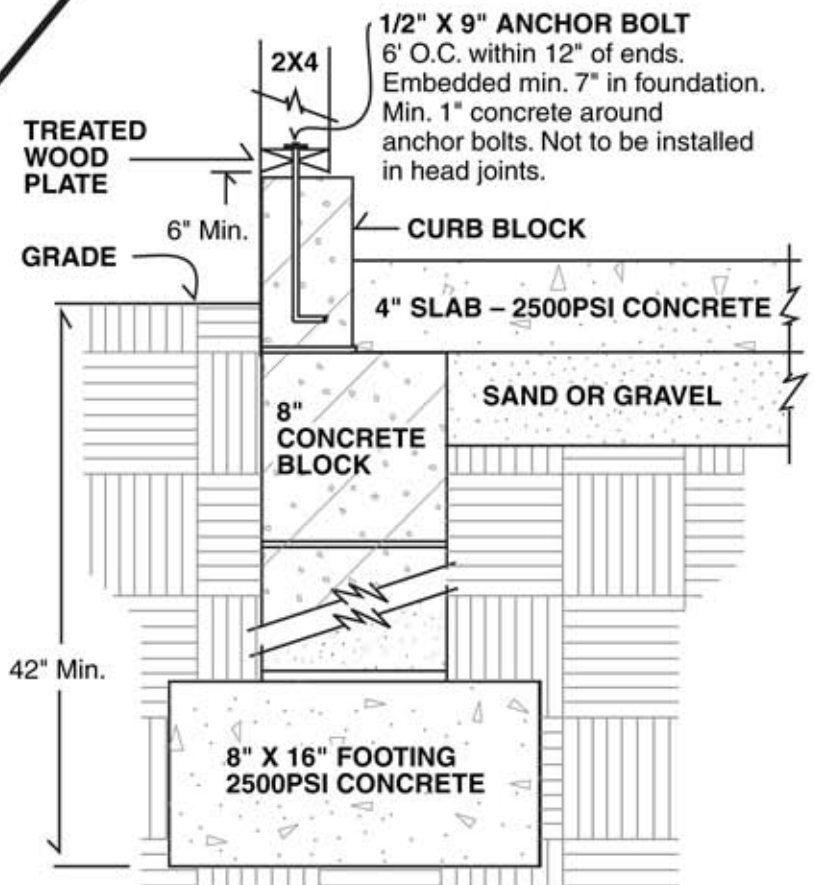
## Millner Garage Footing design

Per City of Ramsey Code Spec for Frost Footings  
and

8 courses of 8" block on West, South, and East Sides  
5 courses of 8" Block on North Side

### Concrete block foundation wall on concrete footing

*Typical for attached garage*



**Note:** Anchor bolts are a maximum of 6' O.C., 12" within any end *or* splice and minimum two per board.