

Resilient Communities Project

*Building Community-University
Partnerships for Sustainability and Resilience*



City of Ramsey Information Session

Mike Greco, AICP

Director, Resilient Communities Project
Center for Urban and Regional Affairs (CURA) – U of MN

January 10, 2017

What Is RCP?

The mission of the Resilient Communities Project is to connect communities in Minnesota with University of Minnesota faculty and students to advance local sustainability and resilience through collaborative, course-based projects.

**Building Community-University
Partnerships for Sustainability and Resilience**

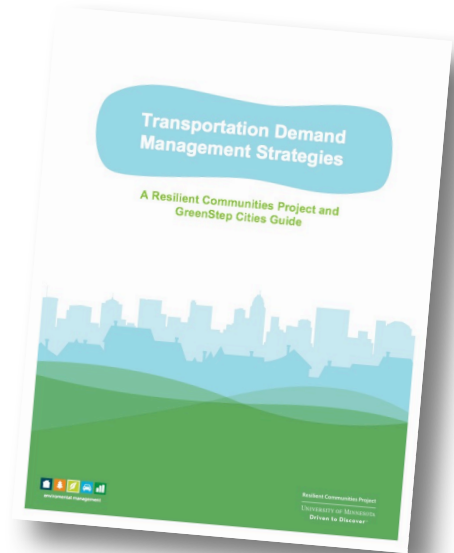


Program Objectives

Building local capacity around sustainability and resilience

Training students to be future sustainability practitioners

Producing case studies, best practices, and tools that can inform sustainability practice



What if...?

We connected existing university courses

...taught in their existing ways

...by existing faculty

...to a single community

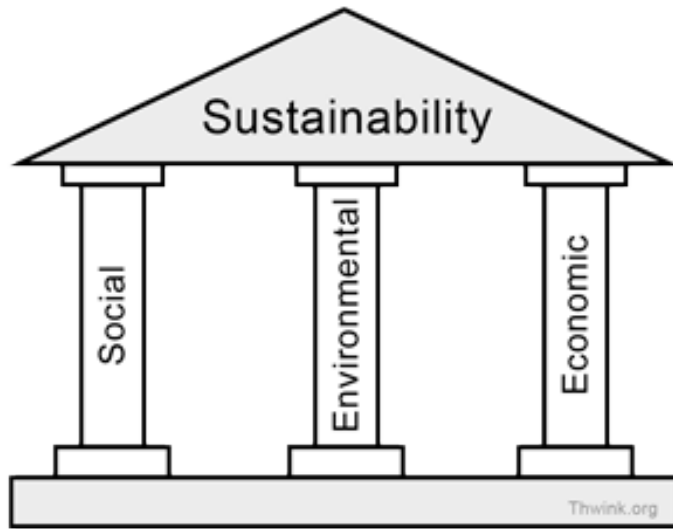
...over an academic year

...to work on projects that advance sustainability and resilience

...identified by city staff?







Resilience is the capacity of individuals, institutions, communities, and natural systems to survive, adapt, and thrive in the face of changes, stresses, and shocks

How Does the Model Work?

Partner **competitively selected (RFP) + contributes financially**

City defines **10–30 projects + identifies project leads**

RCP matches each project with **one or more U of MN courses**

Project leads, faculty, and RCP staff **collaboratively:**

- **clarify and scope** projects that students will undertake
- identify and engage **community partners and stakeholders**

Students **complete projects** as part of regular coursework

Students deliver **final presentations + work products** to city/county



Why the Model Works

Projects are part of city work-plan

Grassroots matchmaking (city staff + faculty)

Participation is opt-in

Multiple students/teams in each class (redundancy)

Frequent communication

Engagement with local residents, businesses, organizations
(creates buy-in)

Everyone has 'skin in the game' (financial, political, a grade)



RCP: The First Four Years

Community partners:

- Minnetonka
- North St. Paul
- Rosemount
- Carver County

Community Projects: 88

U of MN Courses: 141

U of MN Departments: 39

Students: 1,300+



Resilient
Communities Project



Chaska Community Solar Development

Bioproducts and Biosystems Engineering



Watertown Whitewater Recreation Park

Urban Planning, Public Affairs, Natural Resource Management



Victoria Ecotourism Marketing Plan

Natural Resource Management, Journalism and Mass Communication



Suburban Placemaking and Community Gathering Spaces

Urban Studies, Liberal Studies



Rosemount Urban Agriculture

Sustainability Studies, Urban Planning



Rosemount Eco-Green Business Park

Business Administration, Public Policy, Public Affairs



North St. Paul Live/Work Housing and Downtown Revitalization

Housing Studies, Public Affairs



Implementing Living Streets Policy in North St. Paul

Architecture, Public Health, Public Policy, Urban Planning



Aging in Place in North St. Paul

Gerontology, Housing Studies, Social Work, Public Policy



Participating Departments

Agronomy
Anthropology
Architecture
Bioproducts & Biosystems Engineering
Business Administration
Civil, Environmental, & Geo-Engineering
Communication Studies
Community Health Promotion
Design
Environmental Health
Environmental Science, Policy, & Management
Fisheries, Wildlife, & Conservation Biology
Forest & Natural Resource Management
Geographic Information Systems
Geography
Gerontology
Graphic Design
Health, Physical Education & Recreation (UMD)
Horticulture
Human Resources & Industrial Relations

Housing Studies
Journalism & Mass Communication
Landscape Architecture
Law
Liberal Studies
Maternal & Child Health
Organization Leadership, Policy & Development
Psychology
Public Affairs
Public Policy
Public Health Administration & Policy
Recreation & Resource Management
Scandinavian Studies
Science, Technology, & Environmental Policy
Social Work
Spanish & Portuguese Studies
Sustainability Studies
Urban & Regional Planning
Urban Studies
Youth Studies



Partner Community

Access to faculty + 1000s of hours of student time

Student knowledge, creativity, and energy

Multidisciplinary perspective on issues

Groundwork for engaging consultants

Faculty

Efficient access to high-quality
community-based projects

Recognition/visibility for community-
engaged teaching

Feedback loop between research and
practice

Students

Well-organized + meaningful community-based
projects

“Real world” experience related to sustainability
and resilience

Professional networking opportunities



Shared benefits

Questions?

www.rcp.umn.edu



@RCPumn

rcp@umn.edu

612-625-7501

Resilient



Communities Project

