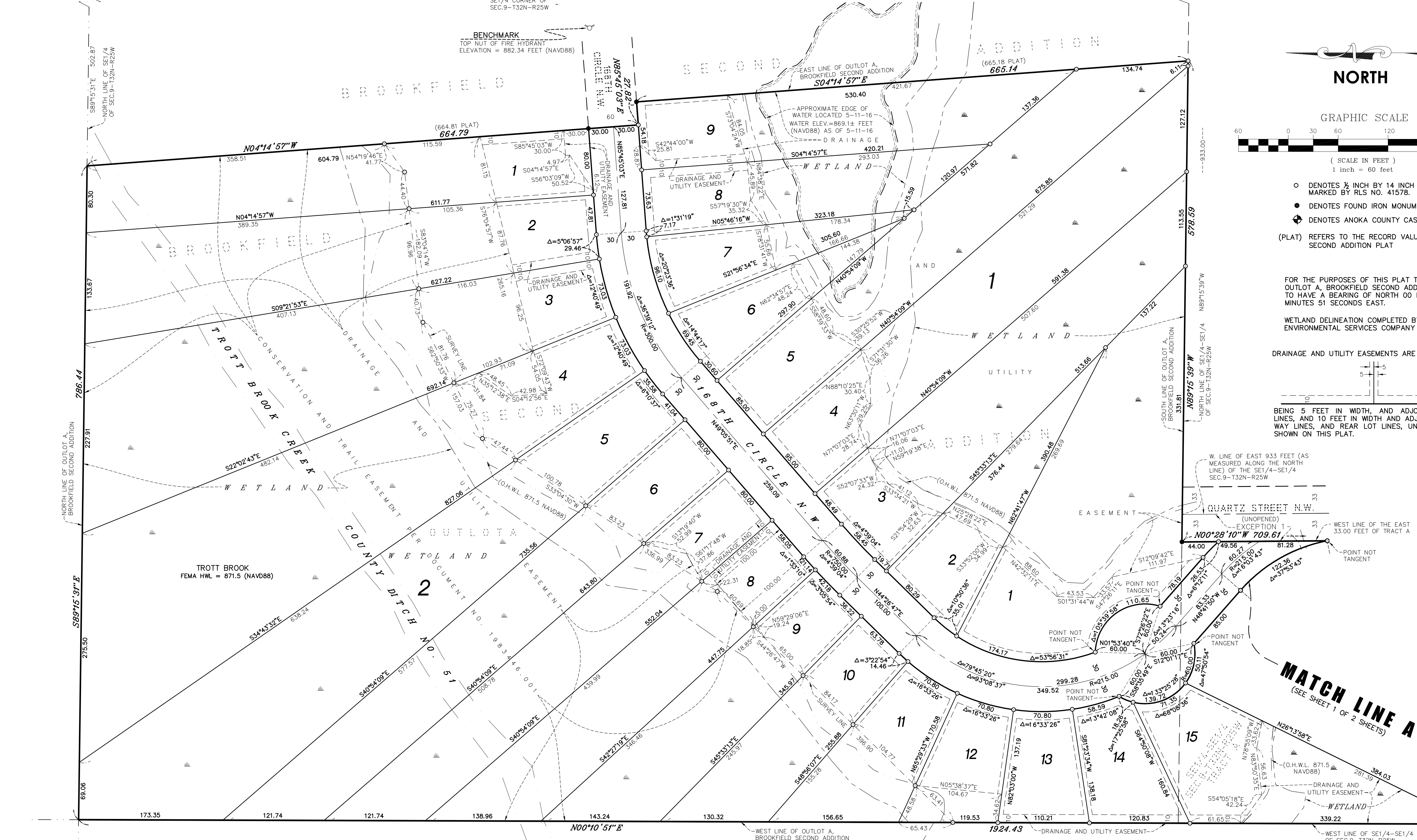
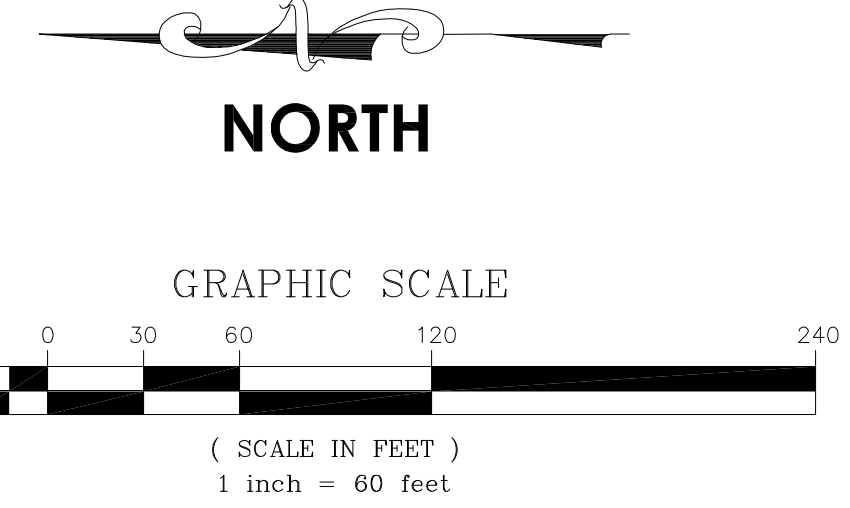


BROOKFIELD EIGHTH ADDITION

E1/4 CORNER OF SEC. 9-T32N-R25W
500°28'10"E 1322.75
2645.50
1322.75
SE CORNER OF SEC. 9-T32N-R25W



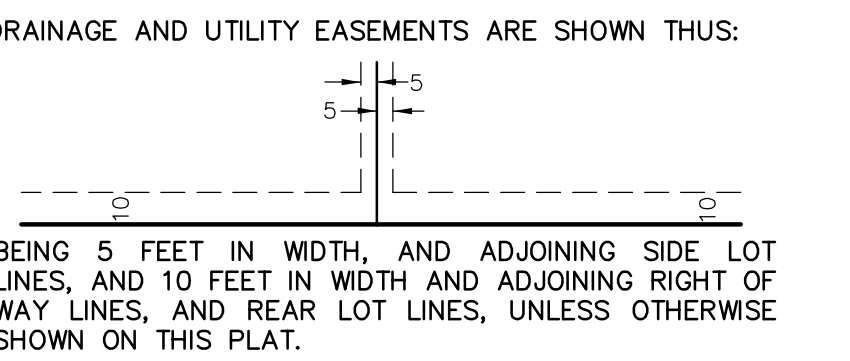
173.35 121.74 121.74 138.96 143.24 130.32 156.65 1924.43
N00°10'51"E
WEST LINE OF OUTLOT A, BROOKFIELD SECOND ADDITION
DRAINAGE AND UTILITY EASEMENT
MCDONALD ADDITION
MCDONALD SECOND ADDITION



- DENOTES 1/2 INCH IRON PIPE MARKED BY RLS NO. 41578.
- DENOTES FOUND IRON MONUMENT
- ⊕ DENOTES ANOKA COUNTY CAST IRON MONUMENT
- (PLAT) REFERS TO THE RECORD VALUE OF BROOKFIELD SECOND ADDITION PLAT

FOR THE PURPOSES OF THIS PLAT THE WEST LINE OF OUTLOT A, BROOKFIELD SECOND ADDITION IS ASSUMED TO HAVE A BEARING OF NORTH 00 DEGREES 10 MINUTES 51 SECONDS EAST.

WETLAND DELINEATION COMPLETED BY KJOLHAUG ENVIRONMENTAL SERVICES COMPANY IN 2016.



DRAINAGE AND UTILITY EASEMENTS ARE SHOWN THUS:

W. LINE OF EAST 933 FEET (AS MEASURED ALONG THE NORTH LINE) OF THE SE1/4-SE1/4 SEC. 9-T32N-R25W

QUARTZ STREET N.W. (UNOPENED) EXCEPTION 1

N00°28'10"W 709.61

WEST LINE OF THE EAST 33.00 FEET OF TRACT A

POINT NOT TANGENT

MATCH LINE A
(SEE SHEET 1 OF 2 SHEETS)