

# VISTAS AT NORTH COMMONS

CITY OF RAMSEY,  
ANOKA COUNTY, MN.  
SEC. 28, T. 32, R. 25

**KNOW ALL PERSONS BY THESE PRESENTS:** That Morning Sun Homes, Inc., a Minnesota corporation, fee owner of the following described property:

Outlot A, RAMSEY TOWN CENTER 8TH ADDITION, according to the recorded plat thereof, Anoka County, Minnesota.

Has caused the same to be surveyed and platted as **VISTAS AT NORTH COMMONS** and does hereby dedicate to the public for public use the drainage and utility easements as shown on this plat.

In witness whereof said Morning Sun Homes, Inc., has caused these presents to be signed by its proper officers this \_\_\_\_\_ day of \_\_\_\_\_, 20\_\_\_\_.

**MORNING SUN HOMES, INC.**

By \_\_\_\_\_

Its \_\_\_\_\_

**STATE OF MINNESOTA  
COUNTY OF \_\_\_\_\_**

The foregoing instrument was acknowledged before me this \_\_\_\_\_ day of \_\_\_\_\_, 20\_\_\_\_ by \_\_\_\_\_ its \_\_\_\_\_ of Morning Sun Homes, Inc., a Minnesota corporation, on behalf of the corporation.

\_\_\_\_\_  
(Signature)

\_\_\_\_\_  
(Name Printed)

Notary Public, \_\_\_\_\_ County, Minnesota

My Commission Expires \_\_\_\_\_

I Craig W. Morse do hereby certify that this plat was prepared by me or under my direct supervision; that I am a duly Licensed Land Surveyor in the State of Minnesota; that this plat is a correct representation of the boundary survey; that all mathematical data and labels are correctly designated on this plat; that all monuments depicted on this plat have been, or will be correctly set within one year; that all water boundaries and wet lands, as defined in Minnesota Statutes, Section 505.01, Subd. 3, as of the date of this certificate are shown and labeled on this plat; and all public ways are shown and labeled on this plat.

\_\_\_\_\_  
Craig W. Morse, Licensed Land Surveyor  
Minnesota License No. 23021

**STATE OF MINNESOTA  
COUNTY OF HENNEPIN**

This instrument was acknowledged before me this \_\_\_\_\_ day of \_\_\_\_\_, 20\_\_\_\_ by Craig W. Morse, Land Surveyor.

\_\_\_\_\_  
(Signature)

\_\_\_\_\_  
(Name Printed)

Notary Public, \_\_\_\_\_ County, Minnesota

My Commission Expires \_\_\_\_\_

**CITY COUNCIL, CITY OF RAMSEY, MINNESOTA**

This plat of **VISTAS AT NORTH COMMONS** was approved and accepted by the City Council of the city of Ramsey, Minnesota at a regular meeting thereof held this \_\_\_\_\_ day of \_\_\_\_\_, 20\_\_\_\_, and said plat is in compliance with the provisions of Minnesota Statutes, Section 505.03, Subd. 2.

\_\_\_\_\_  
Mayor

\_\_\_\_\_  
Clerk

**COUNTY SURVEYOR**

I hereby certify that in accordance with Minnesota Statutes, Section 505.021, Subd. 11, this plat has been reviewed and approved this \_\_\_\_\_ day of \_\_\_\_\_, 20\_\_\_\_.

\_\_\_\_\_  
Larry D. Holm, Anoka County Surveyor

**COUNTY AUDITOR/TREASURER**

Pursuant to Minnesota Statutes, Section 505.021, Subd. 9, taxes payable in the year 20\_\_\_\_ on the land hereinbefore described have been paid. Also, pursuant to Minnesota Statutes, Section 272.12, there are no delinquent taxes and transfer entered this \_\_\_\_\_ day of \_\_\_\_\_, 20\_\_\_\_.

\_\_\_\_\_  
Property Tax Administrator

By \_\_\_\_\_, Deputy

**COUNTY RECORDER/REGISTRAR OF TITLES  
COUNTY OF ANOKA, STATE OF MINNESOTA**

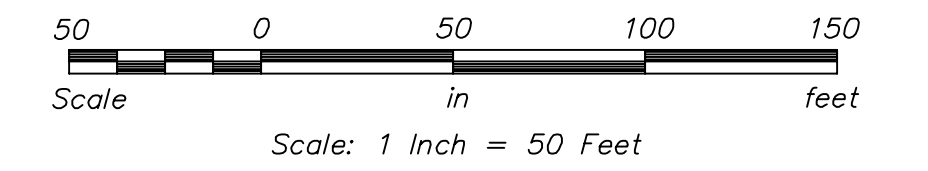
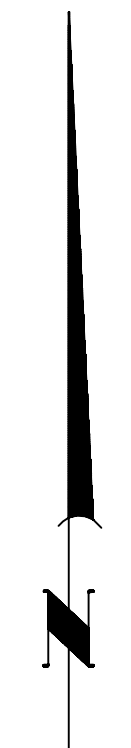
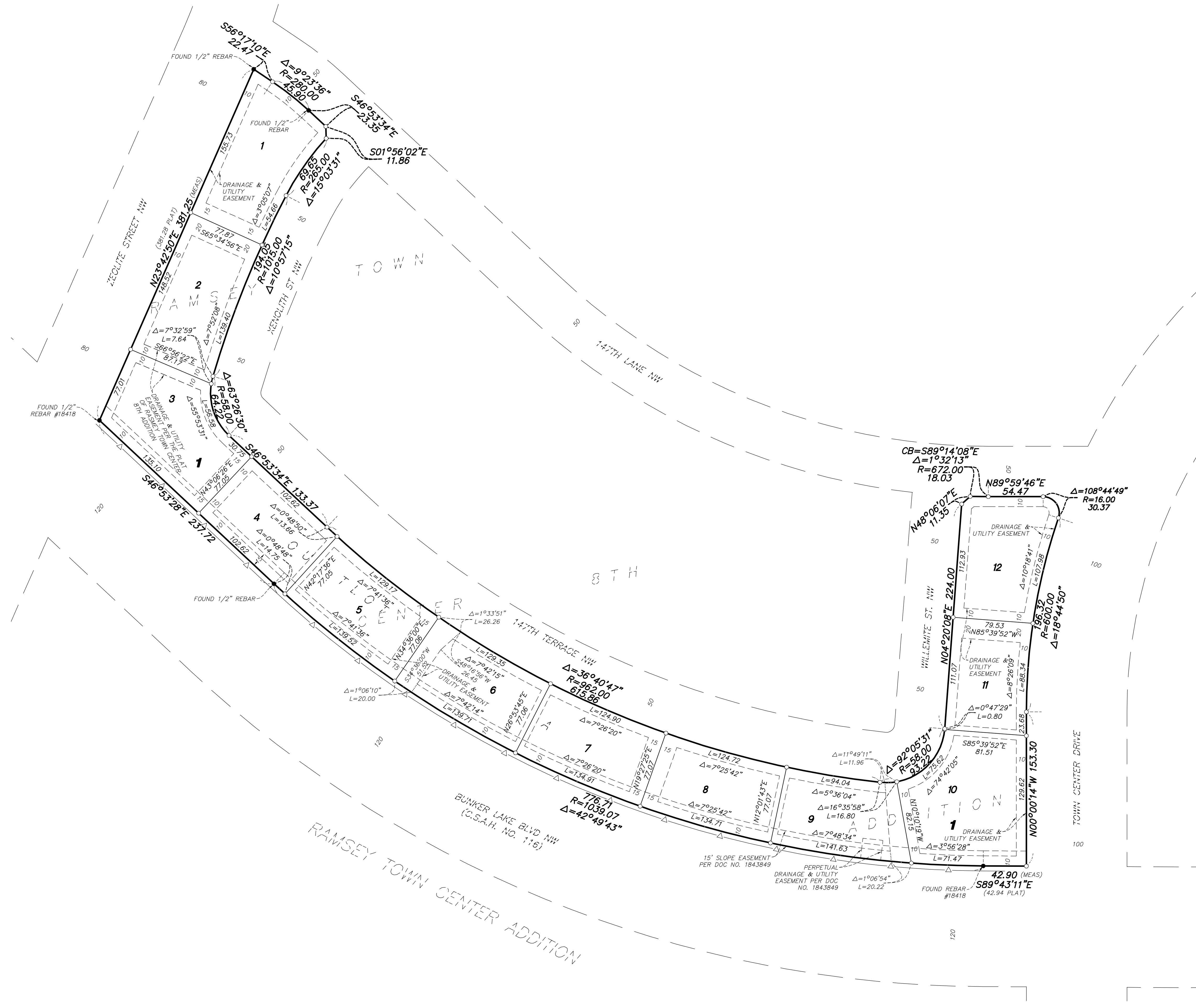
I hereby certify that this plat of **VISTAS AT NORTH COMMONS** was filed in the office of the County Recorder/Registrar of Titles for public record on this \_\_\_\_\_ day of \_\_\_\_\_, 20\_\_\_\_, at \_\_\_\_\_ o'clock \_\_\_\_\_M. and was duly recorded in Book Page \_\_\_\_\_, as Document Number \_\_\_\_\_.

\_\_\_\_\_  
County Recorder/Registrar of Titles

By \_\_\_\_\_, Deputy

# VISTAS AT NORTH COMMONS

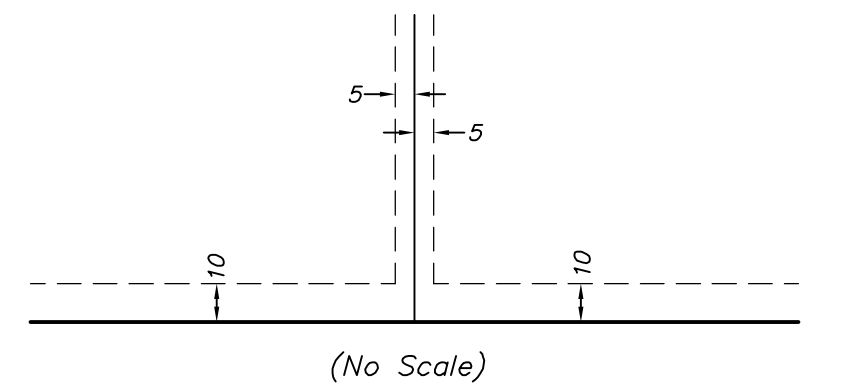
CITY OF RAMSEY,  
ANOKA COUNTY, MN.  
SEC. 28, T. 32, R. 25



The northwesterly line of Outlot A, RAMSEY TOWN CENTER 8TH ADDITION, is assumed to bear N 23°42'50" E

- Denotes 1/2 inch by 1/4 inch iron rebar set and marked by License No. 23021
- Denotes found monument and marked as shown
- △— Denotes Controlled Access per plot of RAMSEY TOWN CENTER 8TH ADDITION

Drainage and Utility Easements are shown thus:



Being 5 feet in width, unless otherwise indicated, and adjoining lot lines, and 10 feet in width and adjoining right-of-way lines as shown on the plat.