

GREENWAY TERRACE

CITY OF RAMSEY
COUNTY OF ANOKA
SEC. 28, T. 32, R. 25

KNOW ALL PERSONS BY THESE PRESENTS: That City of Ramsey, a Minnesota municipal corporation, owner of the following described property:

Outlot A, Ramsey Town Center 7th Addition, Anoka County Minnesota.

Has caused the same to be surveyed and platted as GREENWAY TERRACE and does hereby dedicate to the public for public use the drainage and utility easements as created on this plat.

In witness whereof said City of Ramsey, a Minnesota municipal corporation, has caused these presents to be signed by its proper officer this _____ day of _____, 20____.

City of Ramsey, a Minnesota municipal corporation

By: _____ its _____

STATE OF _____
COUNTY OF _____

This instrument was acknowledged before me on _____ day of _____, 20____, by _____ the _____ of _____ of _____ City of Ramsey, a Minnesota municipal corporation, on behalf of the corporation.

County, _____ Printed Name
My commission expires _____

I Marcus F. Hampton do hereby certify that this plat was prepared by me or under my direct supervision; that I am a duly Licensed Land Surveyor in the State of Minnesota; that this plat is a correct representation of the boundary survey; that all mathematical data and labels are correctly designated on this plat; that all monuments depicted on this plat have been, or will be correctly set within one year; that all water boundaries and wet lands, as defined in Minnesota Statutes, Section 505.01, Subd. 3, as of the date of this certificate are shown and labeled on this plat; and all public ways are shown and labeled on this plat.

Dated this _____ day of _____, 20____

Marcus F. Hampton, Licensed Land Surveyor, Minnesota License No. 47481

STATE OF MINNESOTA
COUNTY OF _____

This instrument was acknowledged before me on this _____ day of _____, 20____, by Marcus F. Hampton.

County, _____ Printed Name
My commission expires January 31, _____

CITY COUNCIL, CITY OF RAMSEY, MINNESOTA

This plat of GREENWAY TERRACE was approved and accepted by the City Council of the City of Ramsey, Minnesota at a regular meeting thereof held this _____ day of _____, 20____, and said plat is in compliance with the provisions of Minnesota Statutes, Section 505.03, Subd. 2.

By: _____ Mayor _____ Clerk

ANOKA COUNTY SURVEYOR

I hereby certify that in accordance with Minnesota Statutes, Section 505.021, Subd. 11, this plat has been reviewed and approved this _____ day of _____, 20____.

Larry D. Hoium, Anoka County Surveyor

COUNTY AUDITOR/TREASURER

Pursuant to Minnesota Statutes, Section 505.021, Subd. 9, taxes payable in the year 20____ on the land hereinbefore described have been paid. Also pursuant to Minnesota Statutes, Section 272.12, there are no delinquent taxes and transfer entered this _____ day of _____, 20____.

Property Tax Administrator

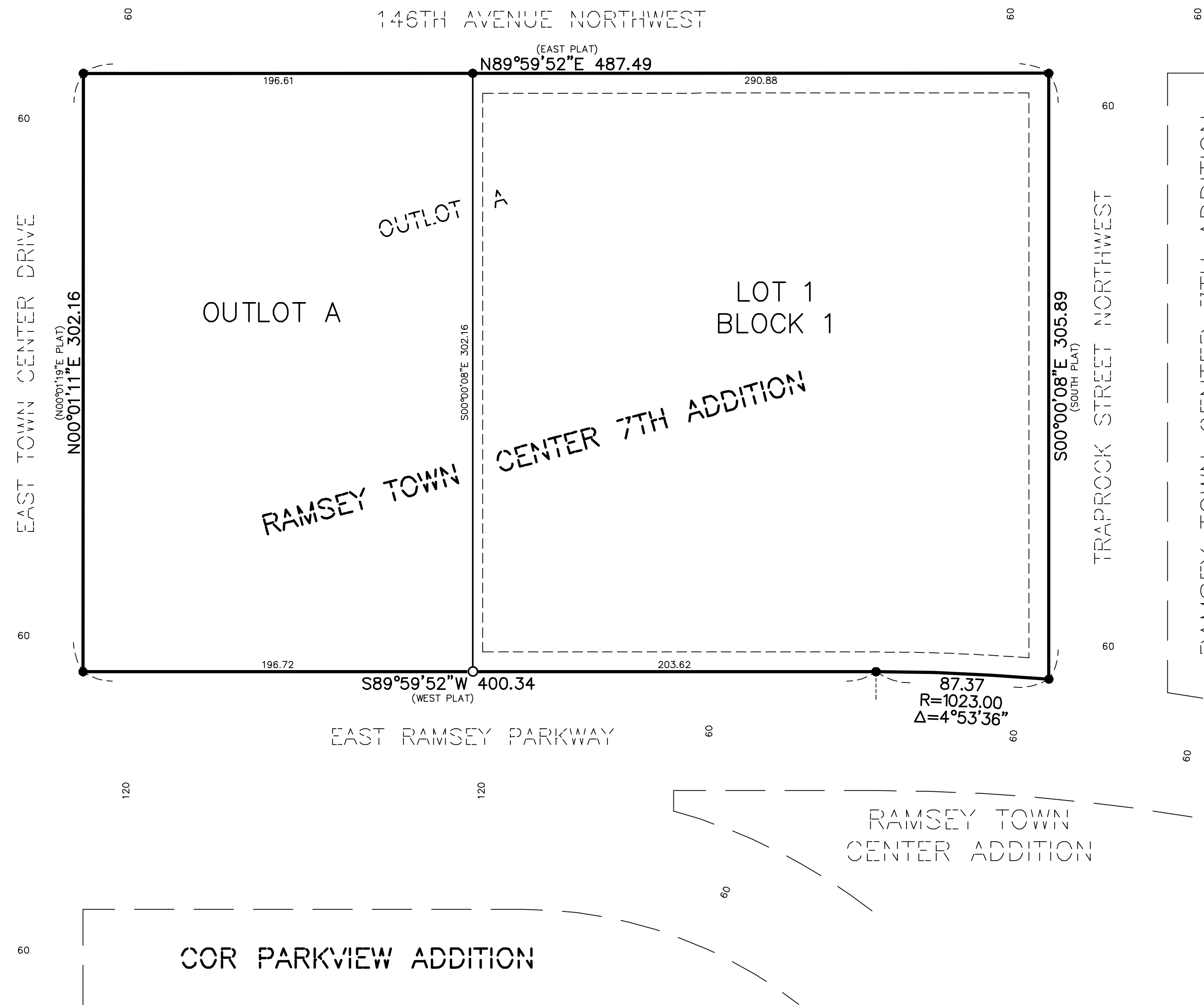
By: _____ Deputy

COUNTY RECORDER/REGISTRAR OF TITLES COUNTY OF ANOKA, STATE OF MINNESOTA

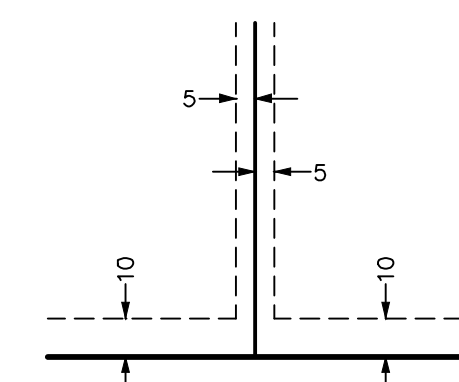
I hereby certify that this plat of GREENWAY TERRACE was filed in the office of the County Recorder/Registrar of Titles for public record on this _____ day of _____, 20____, at _____ o'clock _____ M. and was duly filed in Book _____, Page _____, as Document Number _____.

County Recorder

RAMSEY TOWN CENTER ADDITION



DRAINAGE AND UTILITY EASEMENTS ARE SHOWN THUS:

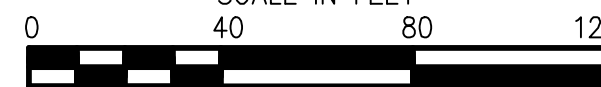


DRAINAGE AND UTILITY EASEMENTS BEING 5 FEET IN WIDTH, UNLESS OTHERWISE INDICATED, ADJOINING LOT LINES, AND BEING 10 FEET IN WIDTH, UNLESS OTHERWISE INDICATED, ADJOINING RIGHT OF WAY LINES, AS SHOWN ON THE PLAT.

N



SCALE IN FEET



BEARINGS ARE BASED ON THE NORTH LINE OF OUTLOT A, RAMSEY TOWN CENTER 7TH ADDITION WHICH IS ASSUMED TO HAVE A BEARING OF N 89°59'52" E

- DENOTES FOUND 1/2 INCH IRON MONUMENT WITH CAP MARKED R.L.S. NO. 47481, UNLESS OTHERWISE NOTED
- DENOTES SET 1/2 INCH IRON MONUMENT WITH CAP MARKED R.L.S. NO. 47481

PLAT DENOTES PLAT OF RAMSEY TOWN CENTER 7TH ADDITION

NOTE: NO MONUMENT SYMBOL SHOWN AT ANY STATUTE REQUIRED LOCATION INDICATES A PLAT MONUMENT THAT WILL BE SET WITHIN ONE YEAR FROM THE RECORDING DATE OF THIS PLAT. SAID MONUMENTS SHALL BE 1/2 INCH x 14 INCH IRON PIPES MARKED BY R.L.S. NO. 47481.

JAMES R. HILL, INC.