

SHEET INDEX

UTILITY AND STREET CONSTRUCTION

- C1 LITHIUM ST NW SANITARY SEWER & WATERMAIN
- C2 LITHIUM ST NW STORM SEWER & STREET
- C2 LITHIUM ST NW
- C3 DEMOLITION PLAN
- C4 DETAILS
- C5 DETAILS

EROSION CONTROL, LANDSCAPING AND DETAILS

- C6 STORMWATER POLLUTION PREVENTION PLAN
- C7 STORMWATER POLLUTION PREVENTION PLAN
- G1 GRADING PLAN
- L1 LANDSCAPE PLAN
- T1 TREE PLAN

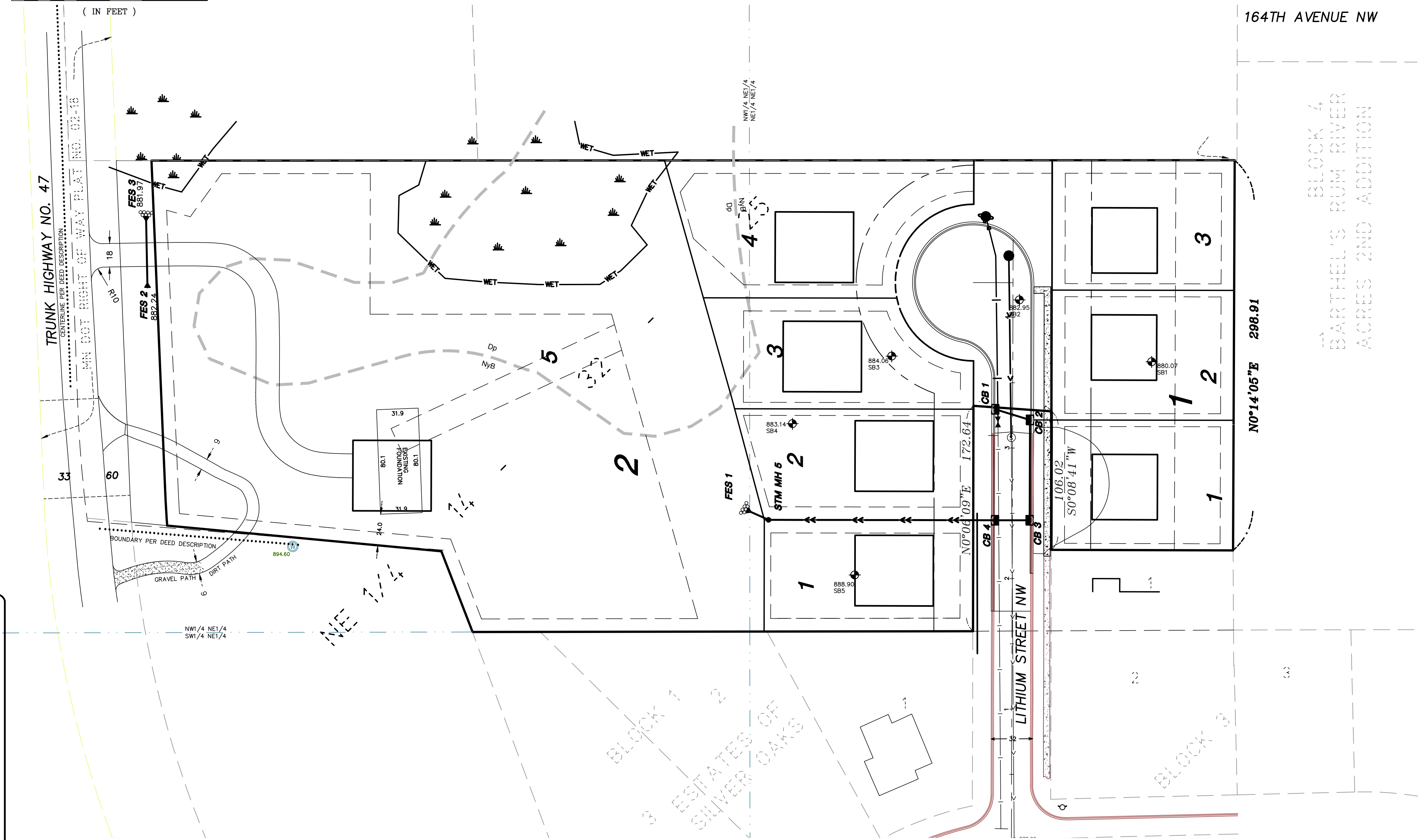
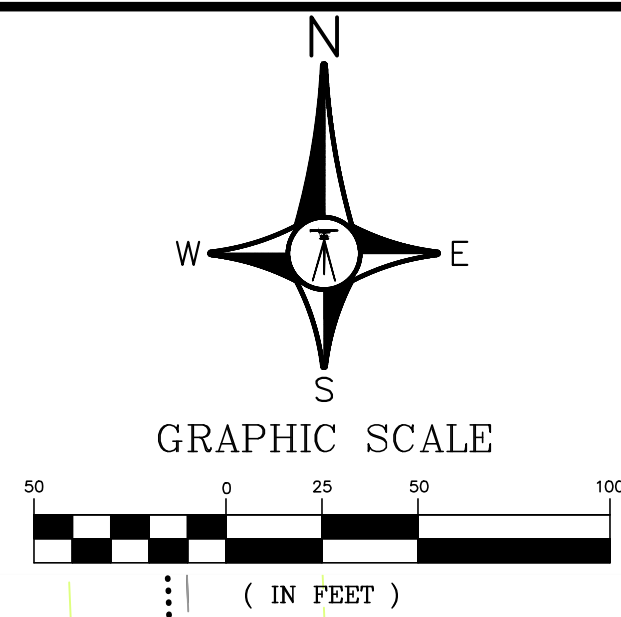
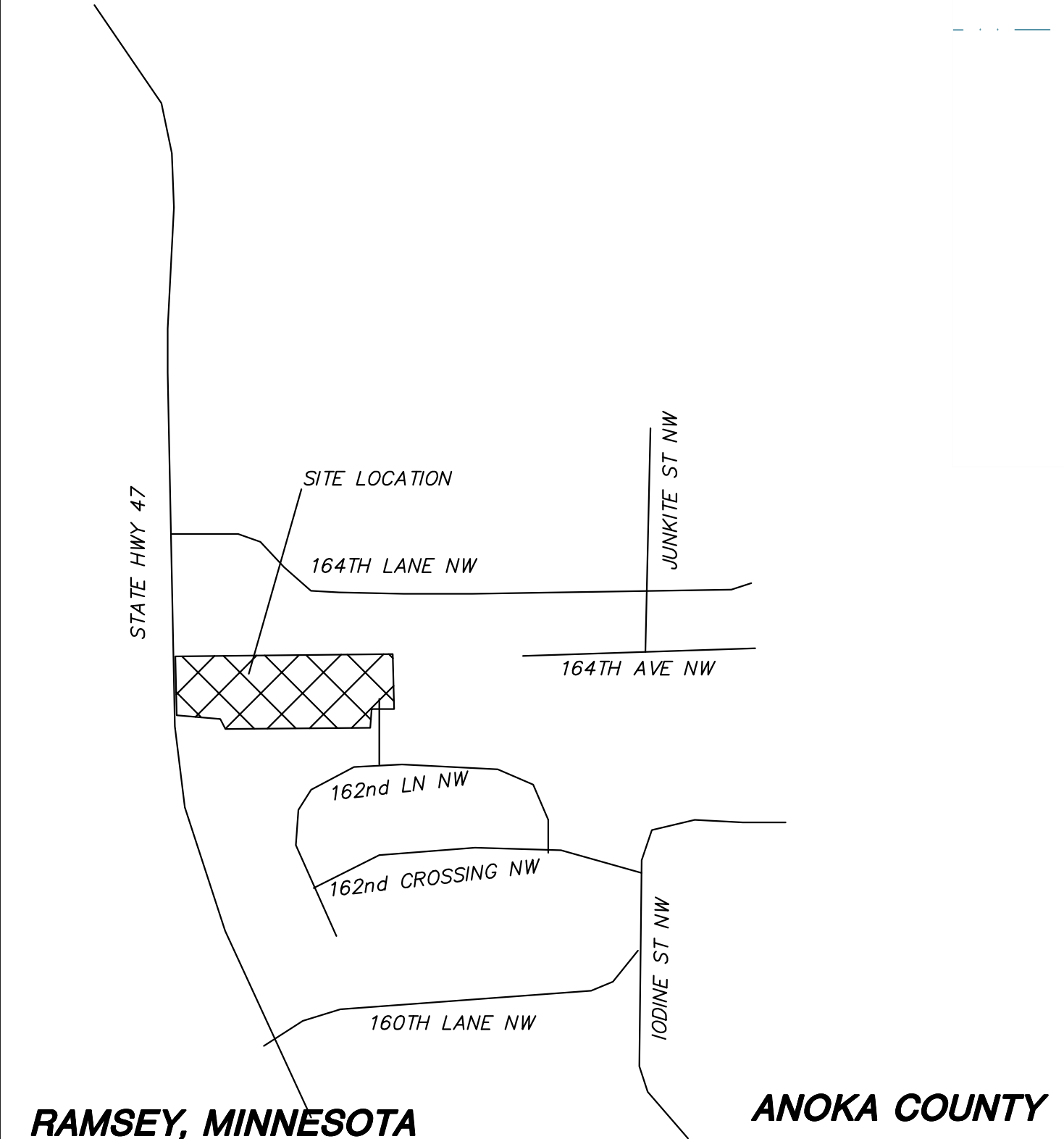
LINE TYPE & SYMBOL LEGEND

- SANITARY SEWER
- STORM SEWER
- WATERMAIN
- DENOTES SOIL BORING
- CURB AND GUTTER
- WETLAND
- SOIL TYPE
- SETBACK
- EASEMENT
- LOT LINE
- R/W
- EDGE OF BITUMINOUS CENTERLINE

OWNER:
 ROYAL OAKS REALTY
 1000 Co Rd E, Ste 150
 Shoreview, Minnesota 55123
 Phone: (651) 483-5518

LOCATION MAP

"NOT TO SCALE"



DENSITY AND AREA

TOTAL ACREAGE OF SITE	6.00 AC.
TOTAL WETLAND	0.39 AC.
HWY 47 R/W	0.40 AC.
NET DEVELOPABLE UPLAND	5.21 AC.
TOTAL PROPOSED LOTS	8 LOTS
TOTAL NET DENSITY	1.54 PER AC.

DATE	5/2/17	CITY COMMENTS	5/26	BY	BR
SCALE	AS SHOWN	CITY COMMENTS	5/26	BY	BR
PROJECT		CITY COMMENTS	5/26	BY	BR
CHECKED	RET-17	CITY COMMENTS	5/26	BY	BR
APPROVED	BTR	CITY COMMENTS	5/26	BY	BR
<p>ESTATES OF SILVER OAKS 2ND ADDITION COVER SHEET RAMSEY, MINNESOTA</p>					
<p>ROSELL ENGINEERING, LLC 6192 267 TH CT WYOMING, MN 55092 PHONE: 763.286.0521</p>					
<p>RECORDED DRAWING</p>					

CO