



KJOLHAUG ENVIRONMENTAL SERVICES COMPANY

Providing Sound, Balanced, Comprehensive Natural Resource Solutions

Memorandum

Date: October 19, 2015

To: Randy Hedlund, Landform Engineering

From: Melissa Barrett, Kjolhaug Environmental Services Company (KES)

Re: Site Assessment for Wetlands
6951 168TH AVENUE, RAMSEY, MN

The 6951 168th Avenue site was examined on October 6, 2015 for the presence and extent of wetland. The site was located in Section 10, Township 32N, Range 25W, City of Ramsey, Anoka County, Minnesota. No wetlands were identified or delineated on the site.

The 2.34-acre site was located west of the intersection of 168th Avenue NW and Garnet Street NW (**Figure 1**). Site limits correspond to the address of 6951 168th Avenue NW and Anoka County PID 10-32-25-31. The site is comprised of a single-family home in the center of the site and a detached garage in the northwest part of the site. The home is surrounded by manicured yard and planted trees and shrubs. Un-manicured meadow and woodland is found in the northeast portion of the site (**Figure 2**).

Review of Soils, NWI, and DNR Information

The MN DNR revised *National Wetland Inventory Map (NWI)* (<http://deli.dnr.state.mn.us>) did not show any wetlands within or near site boundaries (**Figure 3**).

The *Soil Survey of Anoka County, Minnesota* (<http://soils.usda.gov/survey/geography/ssurgo/>) showed the following soil types present within site boundaries (**Figure 4**). No hydric soils were shown within or near site boundaries.

SMU	Map unit name	Hydric Rating	Acres in AOI	Percent of AOI
AnA	Anoka loamy fine sand, 0 to 2 percent slopes	0	1.2	36.70%
DIA	Dalbo silt loam, 1 to 5 percent slopes	0	2	63.30%

The *DNR Protected Waters Map, Anoka County* (<http://deli.dnr.state.mn.us>) did not show any DNR Protected Waters, Watercourses, or Wetlands within site boundaries (**Figure 5**). A DNR Protected Watercourse is located more than 300-feet to the northwest of the site.

Wetland Determinations and Delineations

The 6951 168th Avenue site was examined on October 6, 2015 for the presence and extent of wetland. At that time, herbaceous growth was present and had not yet begun to senesce. Leaves were present on trees and shrubs. Climatic conditions were normal based on available precipitation data (attached).

The site was comprised of a single-family home in the center of the site and a detached garage in the northwest part of the site. The home was surrounded by manicured yard and planted trees (mainly silver maple) and shrubs.

Un-manicured meadow was dominated by smooth brome, yellow foxtail, Canada goldenrod, and Kentucky bluegrass with lesser amounts of raspberry, pearly everlasting, common milkweed, asparagus and scattered Siberian elm, red cedar, cottonwood, and black cherry.

Woodland was dominated by canopy of boxelder and an understory scattered with motherwort, poison ivy, lambsquarter, Canada goldenrod, Common milkweed, yellow foxtail, gooseberry, riverbank grape, bedstraw, stinging nettle, Canada thistle, wood sedge, elderberry, Virginia creeper, raspberry, and American lopseed.

No closed depressions or areas dominated by hydrophytic vegetation were observed. No areas were shown as wetland on the NWI map, and no hydric soils were mapped within site boundaries. ***No wetlands were identified or delineated on the 6951 168th Avenue site in Ramsey, Minnesota by Kjolhaug Environmental.***

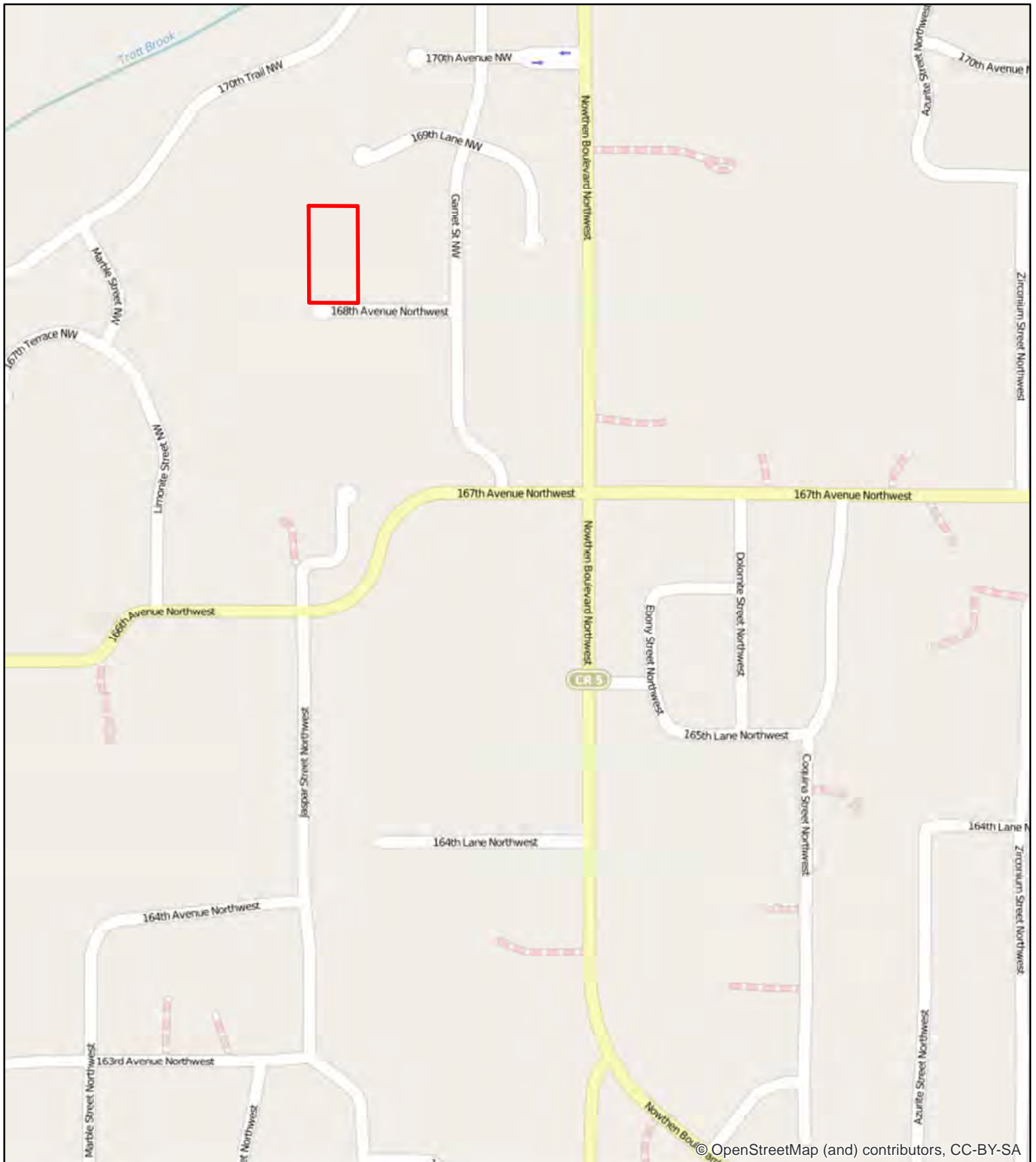


Figure 1 - Site Location Map



N



0 750



Feet

6951 168th Avenue (KES 2015-171)
Ramsey, Minnesota

Note: Boundaries indicated on this figure are approximate and do not constitute an official survey product.

KJOLHAUG ENVIRONMENTAL SERVICES COMPANY



Figure 2 - Existing Conditions (2013 FSA Aerial Photograph)



N
▲

KJOLHAUG ENVIRONMENTAL SERVICES COMPANY

0



Feet

6951 168th Avenue (KES 2015-171)
Ramsey, Minnesota

Note: Boundaries indicated on this figure are approximate and do not constitute an official survey product.



Figure 3 - National Wetland Inventory Map (MN DNR 2013)




	<p>N</p> 	<p>0 500</p>  <p>Feet</p>	<p>6951 168th Avenue (KES 2015-171) Ramsey, Minnesota</p>
	<p>KJOLHAUG ENVIRONMENTAL SERVICES COMPANY</p>		<p>Note: Boundaries indicated on this figure are approximate and do not constitute an official survey product.</p>



Figure 4 - Soil Survey Map



N



0 150



Feet

6951 168th Avenue (KES 2015-171)
Ramsey, Minnesota

Note: Boundaries indicated on this figure are approximate and do not constitute an official survey product.



Figure 5 - DNR Public Waters Inventory



N
▲

0 500
└──────────┘ Feet

KJOLHAUG ENVIRONMENTAL SERVICES COMPANY

Source: Minnesota DNR

6951 168th Avenue (KES 2015-171)
Ramsey, Minnesota

Note: Boundaries indicated on this figure are approximate and do not constitute an official survey product.

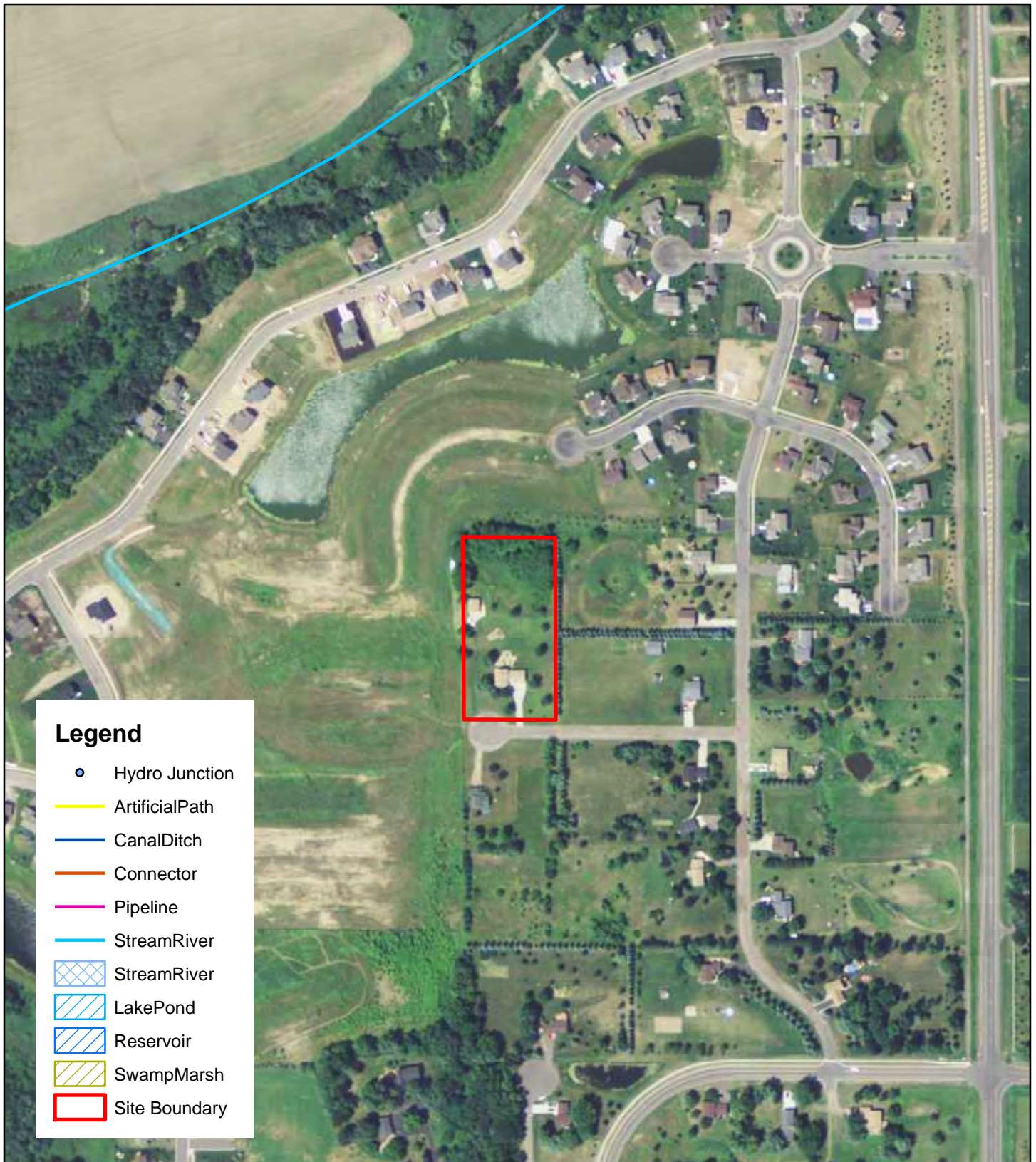


Figure 6 - National Hydrography Dataset Map



N



0 350



Feet

6951 168th Avenue (KES 2015-171)
Ramsey, Minnesota

Note: Boundaries indicated on this figure are approximate and do not constitute an official survey product.



KJOLHAUG ENVIRONMENTAL SERVICES COMPANY

Minnesota Climatology Working Group



State Climatology Office - DNR Division of Ecological and Water Resources

University of Minnesota

home | current conditions | journal | past data | summaries | agriculture | other sites | contact us | search |

Precipitation Worksheet Using Gridded Database

Precipitation data for target wetland location:

county: **Anoka** township number: **32N**
 township name: **Ramsey** range number: **25W**
 nearest community: **Nowthen** section number: **10**

Aerial photograph or site visit date:

Tuesday, October 06, 2015

Score using 1971-2000 normal period

(values are in inches)	first prior month: September 2015	second prior month: August 2015	third prior month: July 2015
estimated precipitation total for this location:	missing	missing	6.52
there is a 30% chance this location will have less than: *	2.00	3.55	2.99
there is a 30% chance this location will have more than: *	3.69	5.05	4.92
type of month: dry normal wet	missing	missing	wet
monthly score	missing	missing	1 * 3 = 3
multi-month score: 6 to 9 (dry) 10 to 14 (normal) 15 to 18 (wet)			
		missing	

Score using 1981-2010 normal period

(values are in inches)	first prior month: September 2015	second prior month: August 2015	third prior month: July 2015
estimated precipitation total for this location:	2.39 missing	3.68 missing	6.52
there is a 30% chance this location will have less than: *	2.27	3.14	3.02
there is a 30% chance this location will have more than: *	4.50	4.95	4.89
type of month: dry normal wet	normal missing	normal missing	wet
monthly score	3*2=6 missing	2*2=4 missing	1 * 3 = 3
multi-month score: 6 to 9 (dry) 10 to 14 (normal) 15 to 18 (wet)			
		missing	
		6+4+3=13 (normal)	

view **USDA-NRCS WETS data** for Anoka County