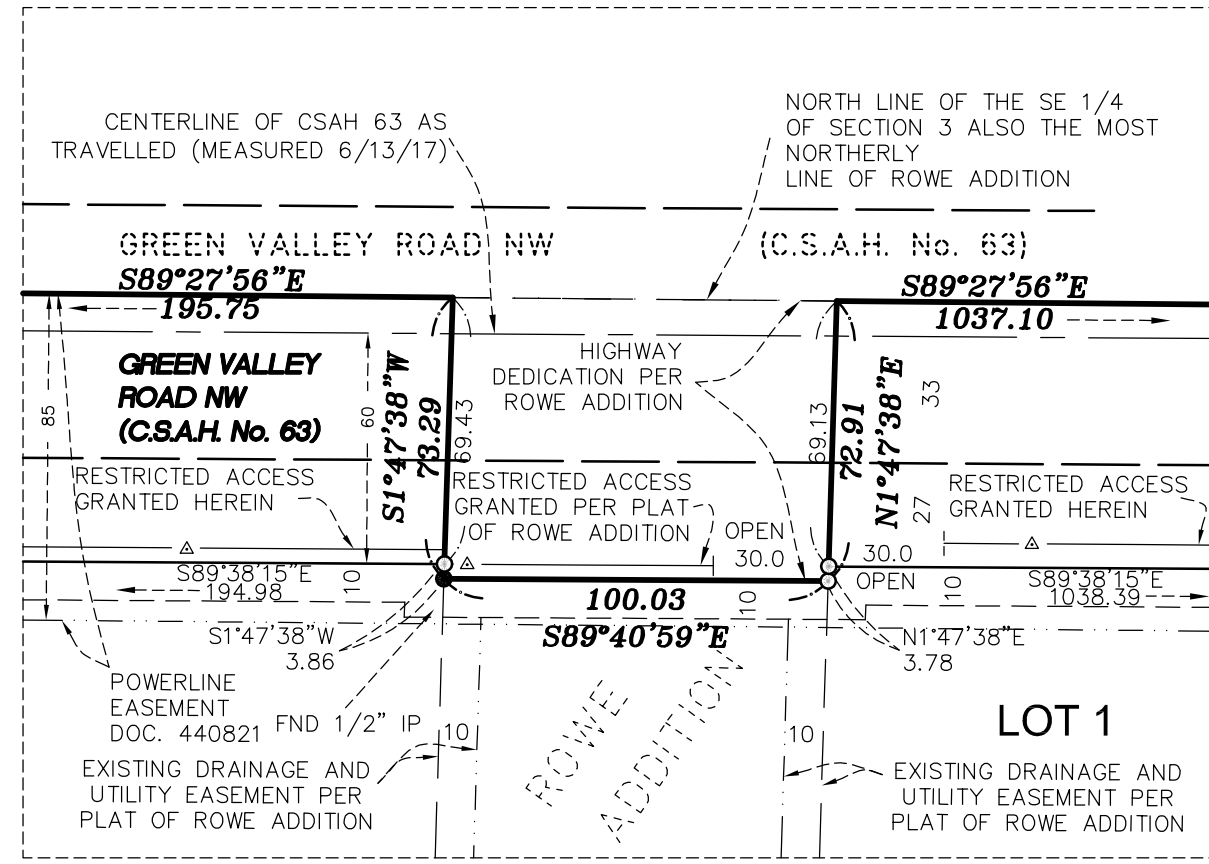


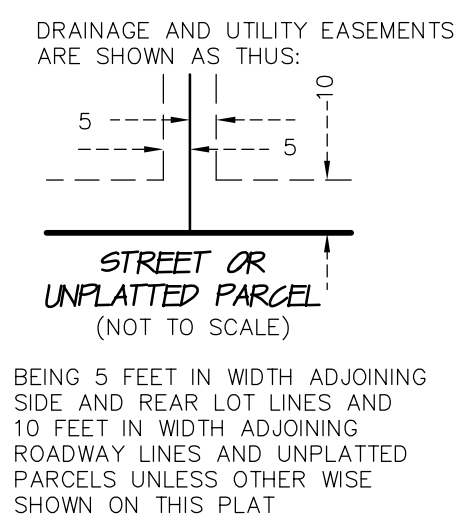
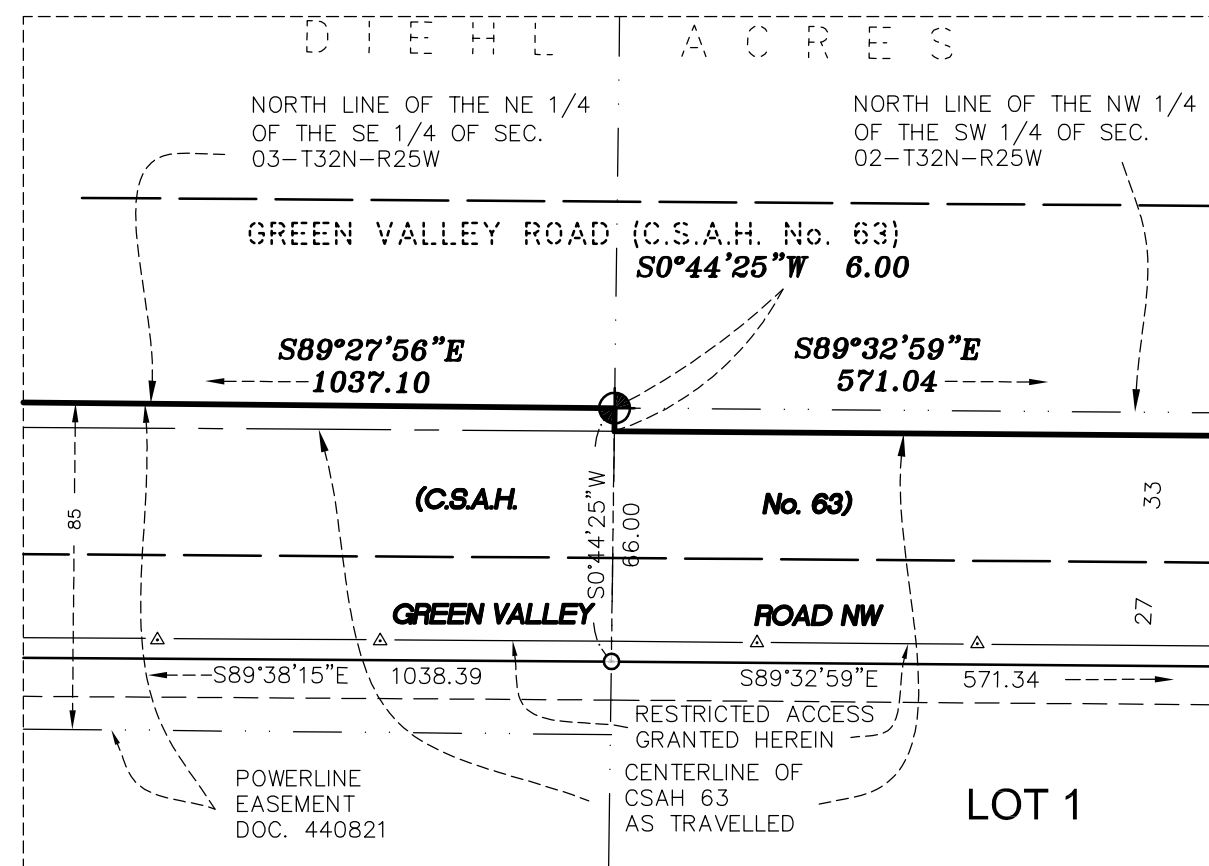
DAVIS FARMS ADDITION

CITY OF RAMSEY
COUNTY OF ANOKA
SEC. 2 AND SEC. 3,
T32N, R25W

DETAIL 'A'
1 INCH = 50 FEET



DETAIL 'B'
1 INCH = 50 FEET



LEGEND

- DENOTES 1/2 INCH IRON MONUMENT LS 18420 FOUND UNLESS OTHERWISE NOTED
- DENOTES 1/2 INCH BY 14 INCH IRON MONUMENT SET, MARKED RLS# 41578
- DENOTES ANOKA COUNTY CAST IRON MONUMENT
- WET — DENOTES WETLAND EDGE DELINEATED BY JACOBSON ENVIRONMENTAL IN 2017
- ▲— DENOTES RIGHT OF ACCESS DEDICATED HEREIN TO ANOKA COUNTY
- - - DENOTES EXISTING EASEMENT

FOR THE PURPOSES OF THIS PLAT THE EAST-WEST QUARTER LINE OF SECTION 3, TOWNSHIP 32 NORTH, RANGE 25 WEST, IS ASSUMED TO HAVE A BEARING OF SOUTH 89 DEGREES 27 MINUTES 56 SECONDS EAST.

NORTH

