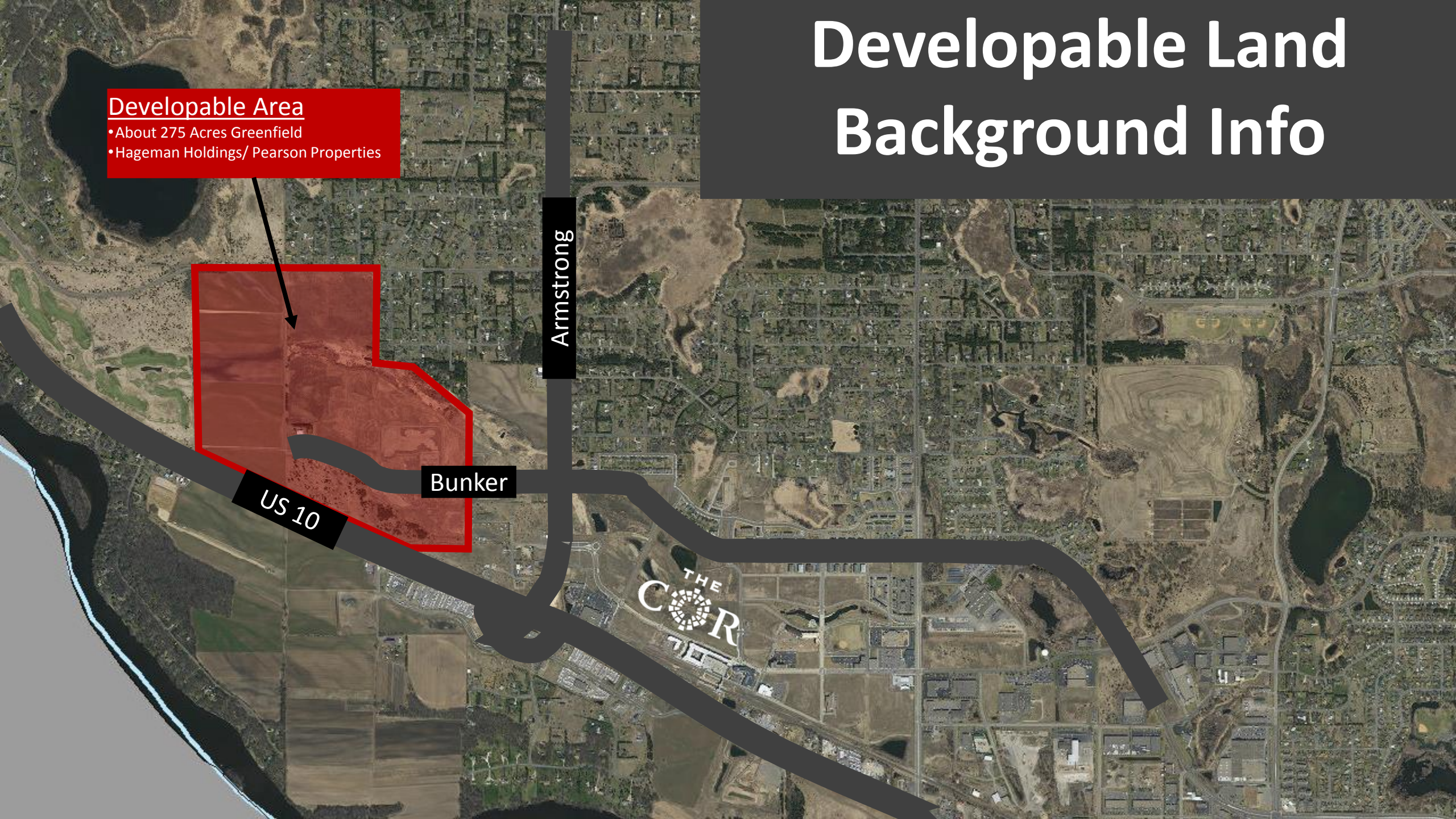


Developable Land Background Info

Developable Area

- About 275 Acres Greenfield
- Hageman Holdings/ Pearson Properties



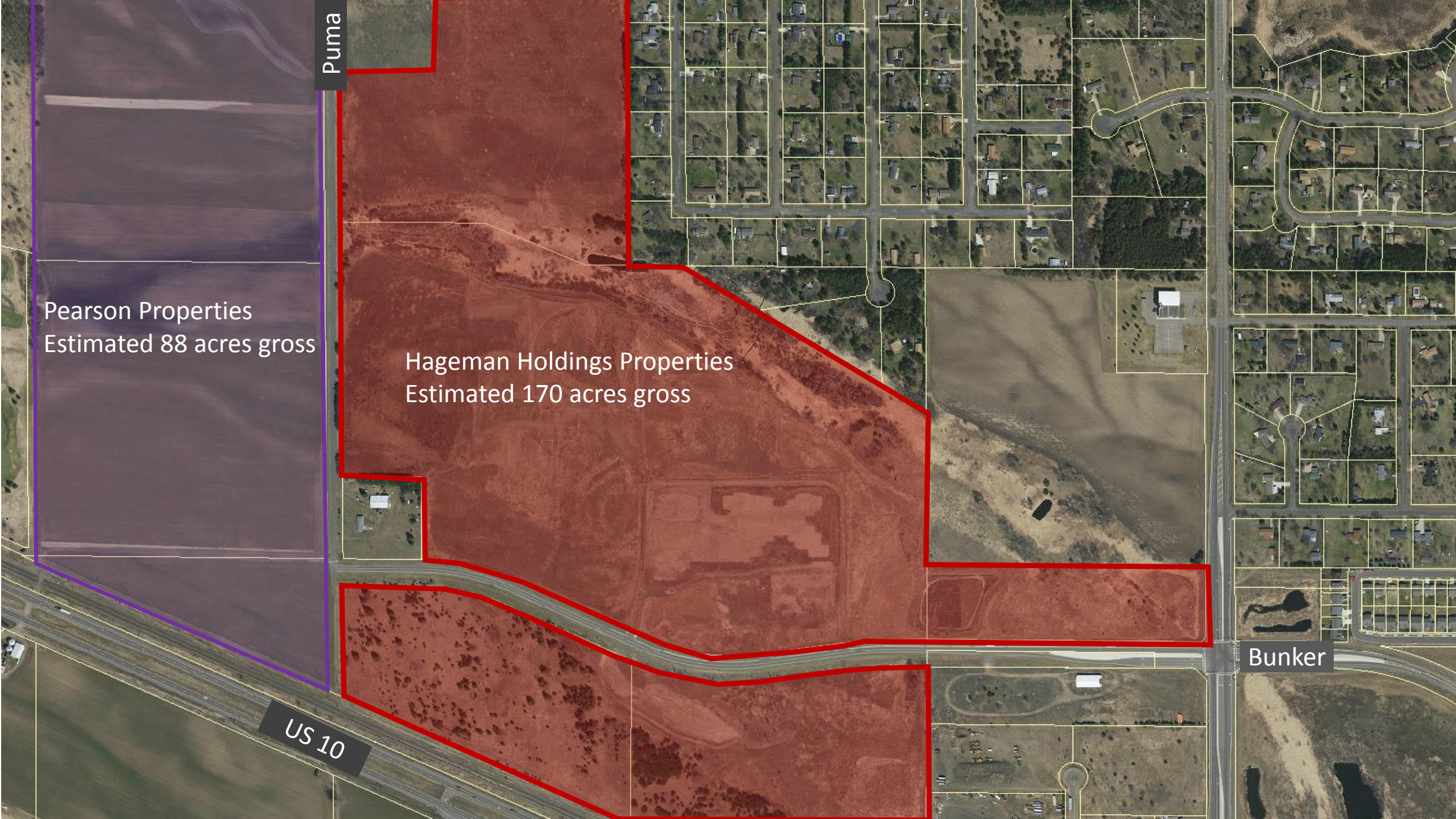
Puma

Pearson Properties
Estimated 88 acres gross

Hageman Holdings Properties
Estimated 170 acres gross

US 10

Bunker



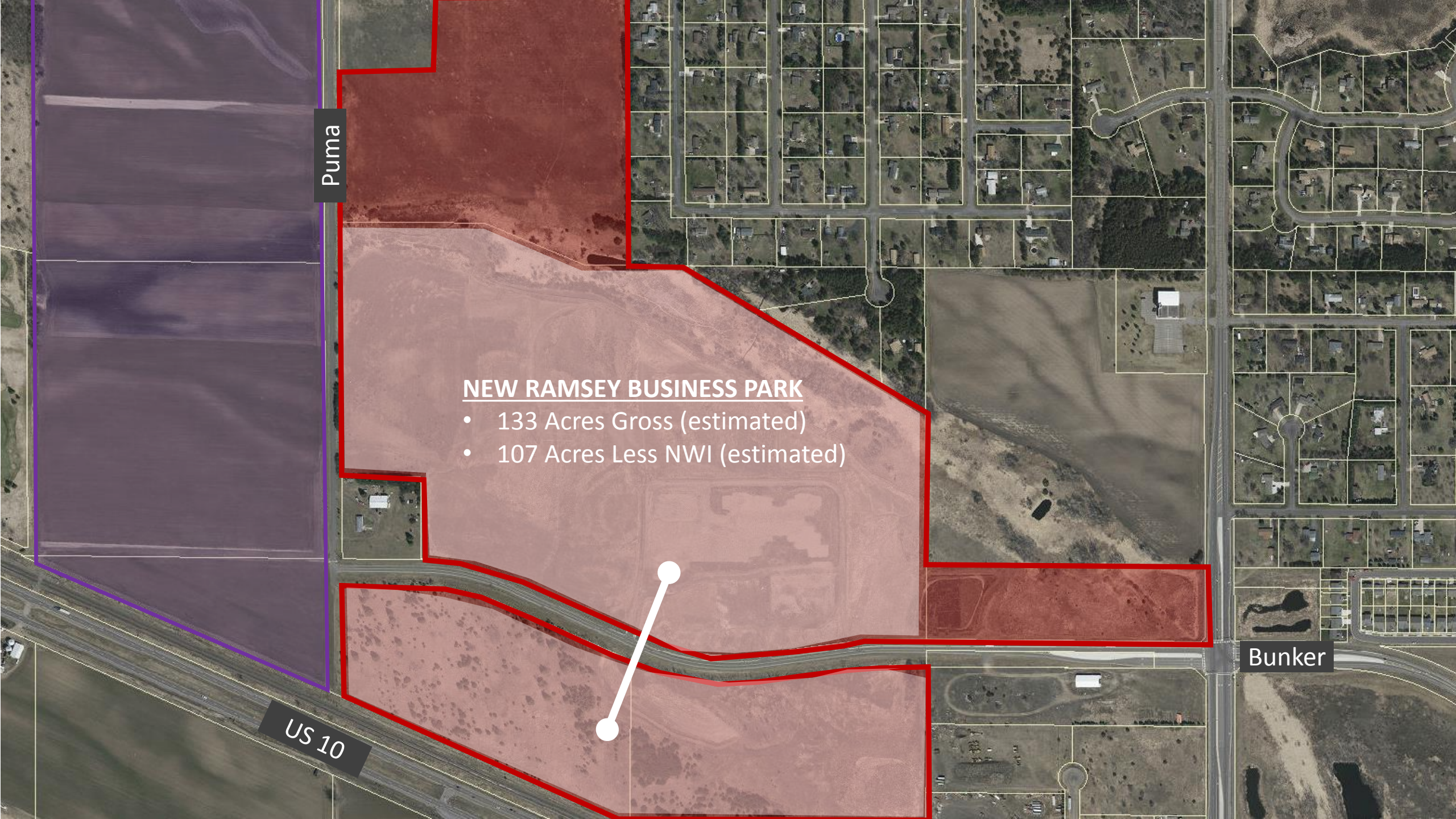
Puma

NEW RAMSEY BUSINESS PARK

- 133 Acres Gross (estimated)
- 107 Acres Less NWI (estimated)

US 10

Bunker



Capstone

US 10

Bunker

PSD LLC Development

- Purchase 45 acres of the business park
- Everything south of Bunker
- 7 buildings shown in master plan
- 2 buildings planned for completion in 2018.

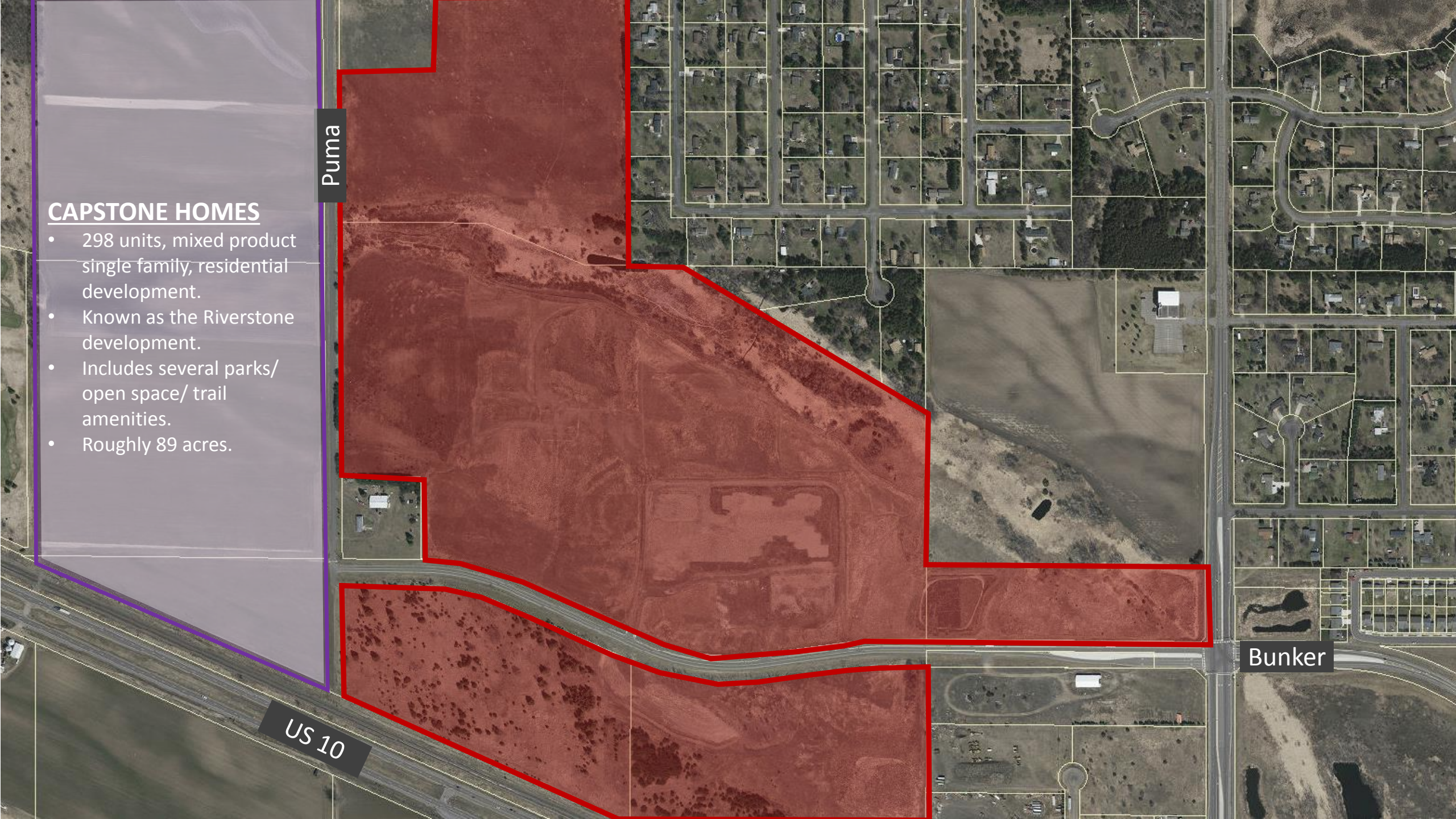
Puma

CAPSTONE HOMES

- 298 units, mixed product single family, residential development.
- Known as the Riverstone development.
- Includes several parks/ open space/ trail amenities.
- Roughly 89 acres.

US 10

Bunker



CAPSTONE HOMES

Phase 2

Puma

Arterial Infrastructure Extension

- Needs to be extended to serve phase 1 of the Capstone Homes project, and the City's future business park.
- Road, trunk sewer, trunk water, trail, curb/ gutter
- Total Cost: \$3.68M
- Total Cost, less trunk sewer/ water: **\$2.62M**

Phase 1

Bunker

US 10

Existing Arterial Infrastructure

