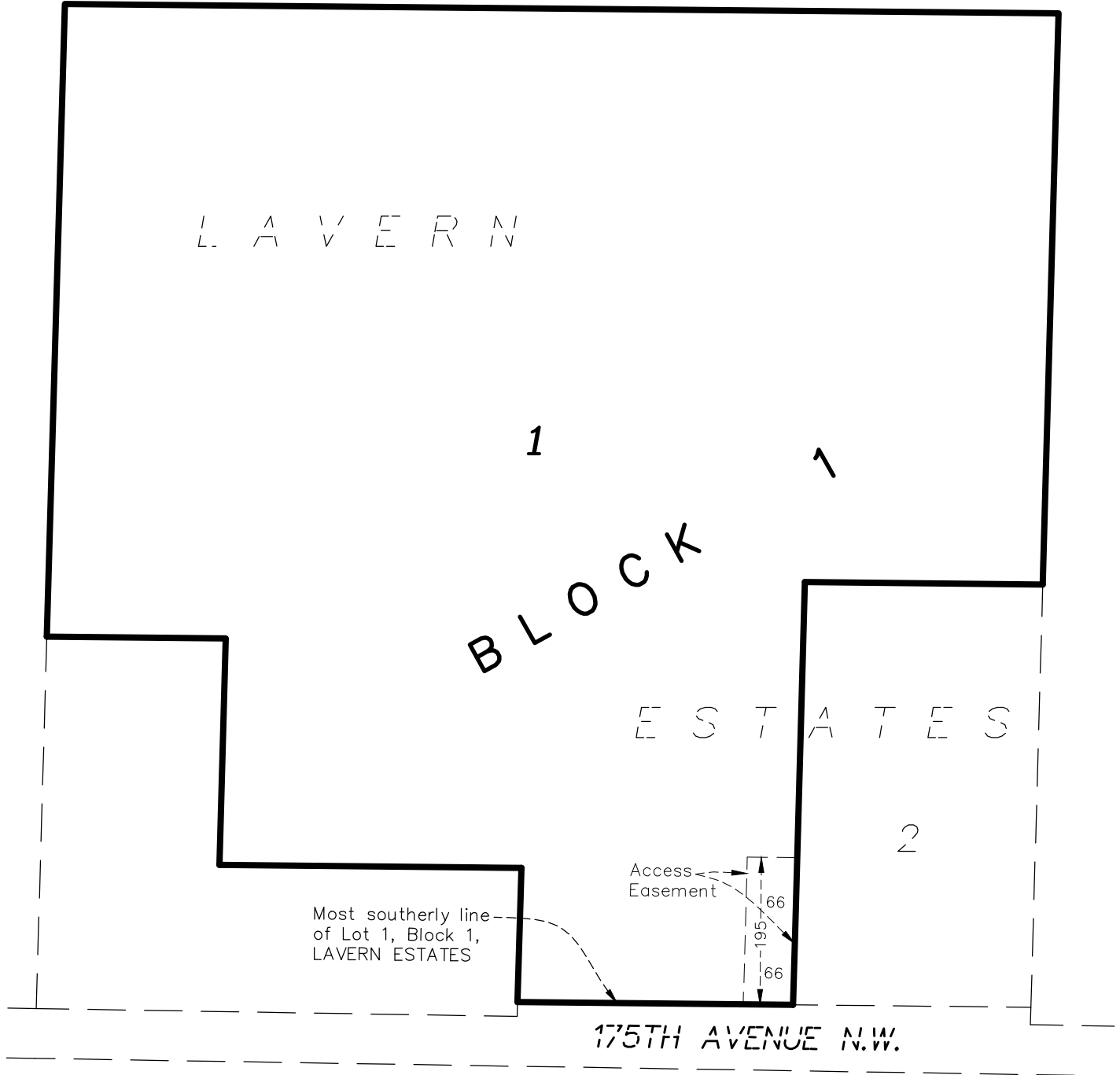


Access Easement Description Sketch



ACCESS EASEMENT:

An easement lying over, under, and across, the East 66.00 feet of the most southerly 195.00 feet of Lot 1, Block 1, LAVERN ESTATES, according to the recorded plat thereof, Anoka County, Minnesota.

Said easement contains ±12,872 sq.ft.

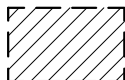


ENVIRONMENTAL • ENGINEERING • SURVEYING

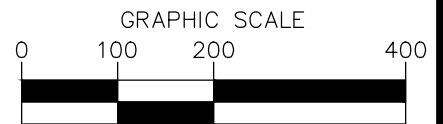
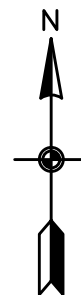
3890 Pheasant Ridge Drive NE,

Suite 100, Blaine, MN 55449

Phone: 763-489-7900 Fax: 763-489-7959



Access Easement Area



(IN FEET)
(8.5x11 sheet)