

# SITE WORK FOR STONE BROOK ACADEMY

CONSTRUCTION PLANS FOR AGGREGATE BASE, BITUMINOUS SURFACING, CURB & GUTTER,  
GRADING, SEWER AND WATER SERVICES, STORM SEWER AND MISCELLANEOUS CONSTRUCTION  
CITY OF RAMSEY

## GOVERNING SPECIFICATIONS

THE 2016 EDITION OF THE MINNESOTA DEPARTMENT OF TRANSPORTATION STANDARD SPECIFICATIONS FOR CONSTRUCTION AND THE 2013 ADDITION OF THE CEAM STANDARD SPECIFICATIONS SHALL APPLY.

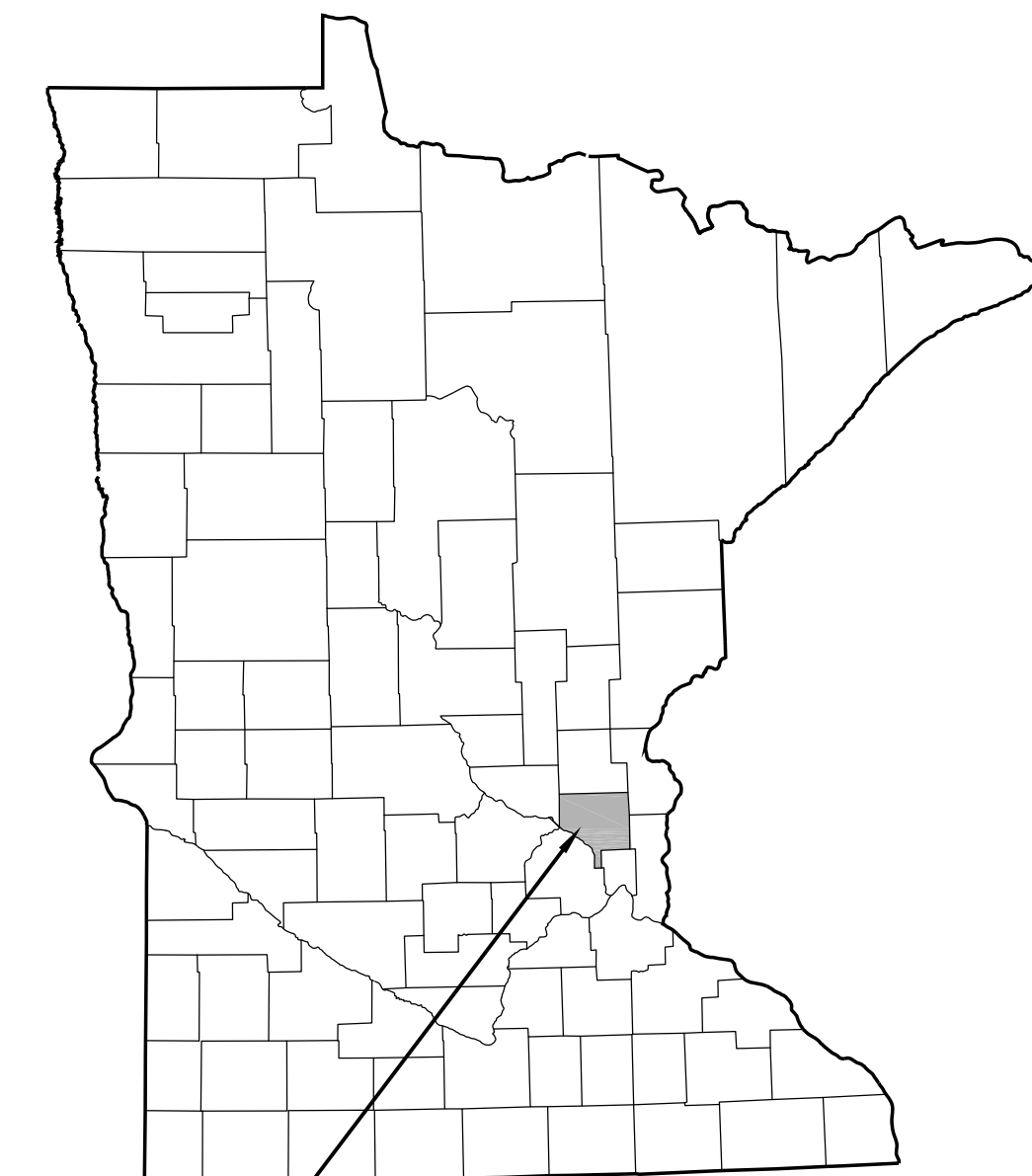
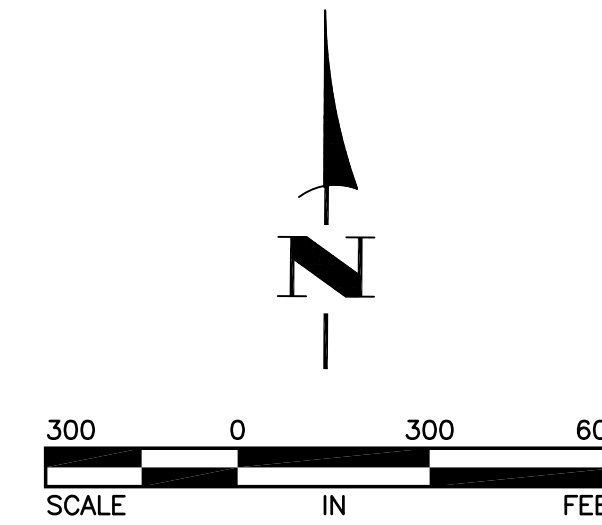
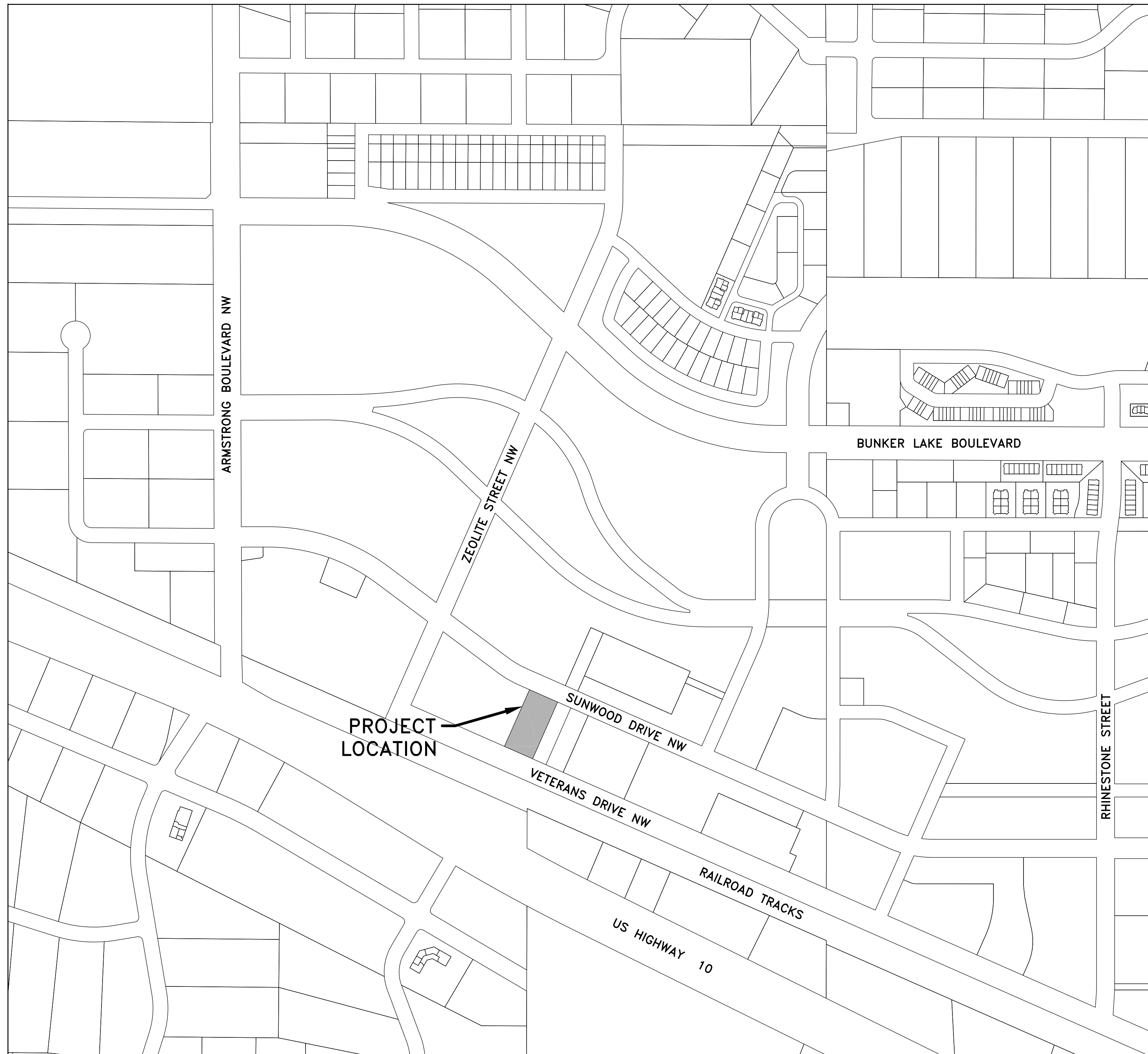
ALL FEDERAL, STATE AND LOCAL LAWS, REGULATIONS, AND ORDINANCES SHALL BE COMPLIED WITH IN THE CONSTRUCTION OF THIS PROJECT.

ALL TRAFFIC CONTROL DEVICES AND SIGNING SHALL CONFORM TO THE LATEST EDITION OF THE MINNESOTA MANUAL ON UNIFORM TRAFFIC CONTROL DEVICES, INCLUDING THE LATEST FIELD MANUAL FOR TEMPORARY TRAFFIC CONTROL ZONE LAYOUTS.

## SHEET INDEX

THIS PLAN CONTAINS 6 SHEETS

SHEET NO.	DESCRIPTION
1	TITLE SHEET
2	EXISTING TOPOGRAPHY PLAN
3	GRADING, DRAINAGE AND EROSION CONTROL PLAN
4	UTILITY AND PAVING PLAN
5	GENERAL CONSTRUCTION NOTES AND DETAILS
6	DETAILS



CITY OF RAMSEY,  
ANOKA COUNTY,  
MINNESOTA

PROJECT  
LOCATION

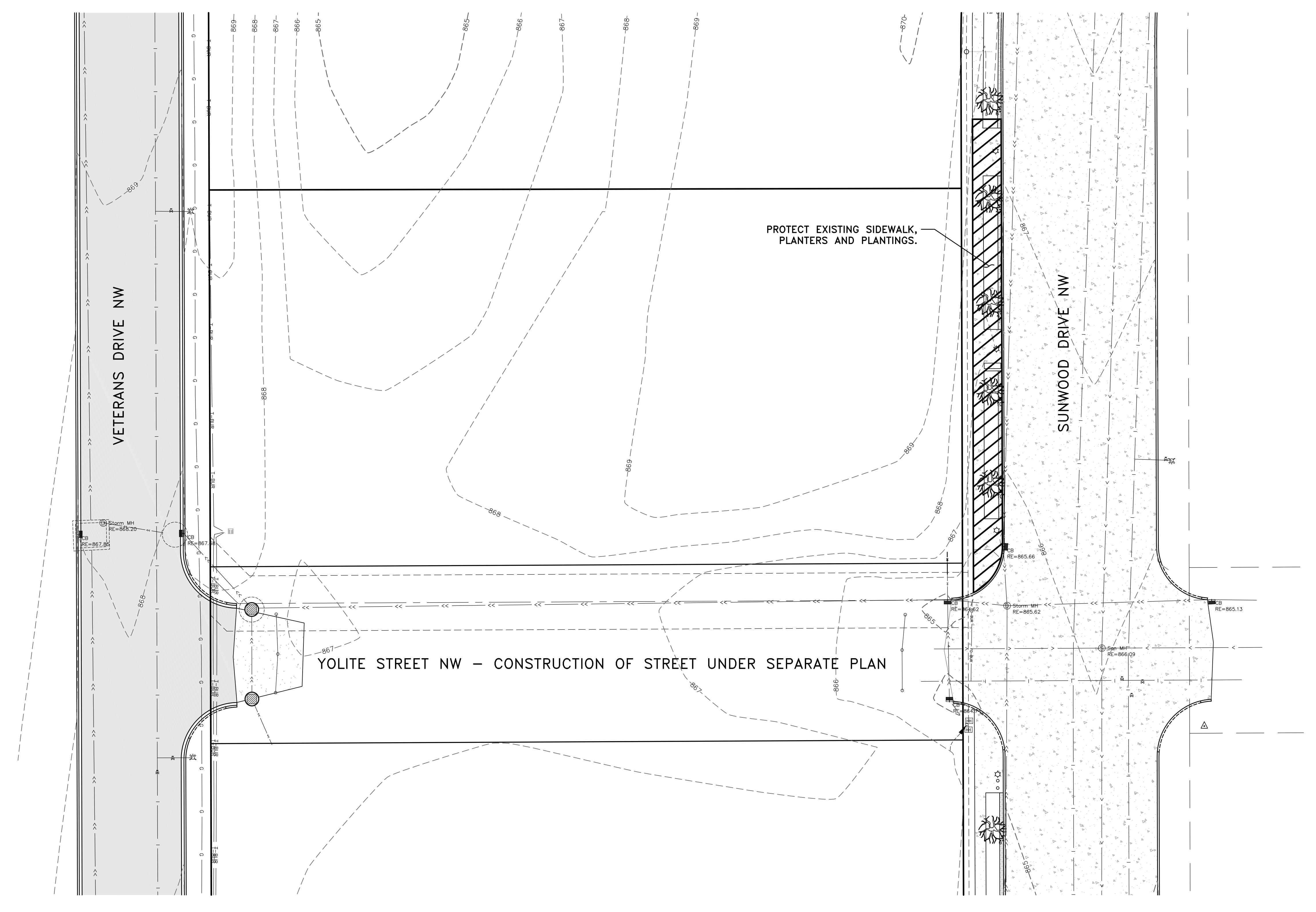
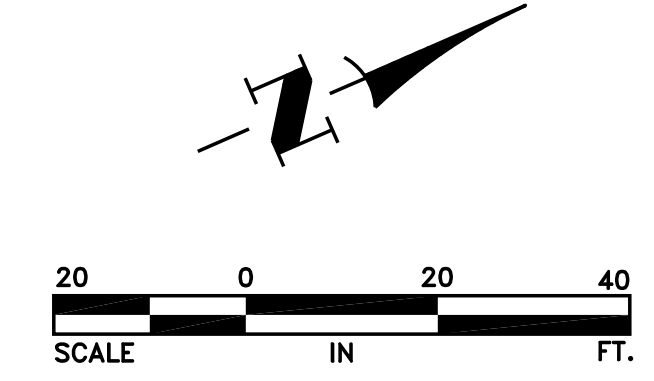
I hereby certify that this plan, specification, or report was prepared by me or under my direct supervision and that I am a duly Licensed Professional Engineer under the laws of the State of Minnesota.

*Craig J. Jochum* 23461 DATE 5/4/17  
 CRAIG J. JOCHUM, P.E. LIC. NO.  
 HAKANSON ANDERSON  
 DESIGN ENGINEER

DATE	REVISION
6/1/17	CITY COMMENTS



THE SUBSURFACE UTILITY INFORMATION IN THIS PLAN IS UTILITY QUALITY LEVEL D. THIS QUALITY LEVEL WAS DETERMINED ACCORDING TO THE GUIDELINES OF CI/ASCE 38-2, ENTITLED "STANDARD GUIDELINES FOR THE COLLECTION AND DEPICTION OF EXISTING SUBSURFACE UTILITY DATA."



**LEGEND**

- 906 --- EXISTING CONTOUR
- - - - - DRAINAGE AND UTILITY EASEMENT
- ===== PROPERTY LINE
- P-OH ----- OVERHEAD ELECTRIC
- P-BUR ----- UNDERGROUND ELECTRIC
- T-BUR ----- UNDERGROUND TELEPHONE
- G ----- UNDERGROUND GAS LINE
- ⊕ POWER POLE
- ⊥ GUY WIRE
- ☀ LIGHT POLE
- >>--->> EXISTING STORM SEWER
- ⊗ EXISTING CATCH BASIN
- ⊙ EXISTING STORM MANHOLE
- >---> EXISTING SANITARY SEWER
- ⊙ EXISTING SANITARY MANHOLE
- |---|--- EXISTING WATER SERVICE
- ===== EXISTING CONCRETE CURB
- ☀ ☀ DECIDUOUS AND CONIFEROUS TREES
- x---x--- EXISTING CHAIN LINK FENCE

DATE	REVISION
6/1/17	CITY COMMENTS

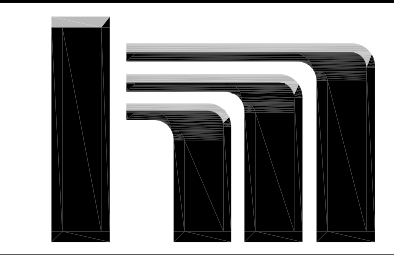
I hereby certify that this plan, specification, or report was prepared by me or under my direct supervision and that I am a duly Licensed Professional Engineer under the laws of the State of Minnesota.

*Craig J. Jochum*  
**CRAIG J. JOCHUM, P.E.**  
 Lic. No. 23461

DESIGNED BY:  
CJJ

DRAWN BY:  
MSS

CHECKED BY:  
CJJ

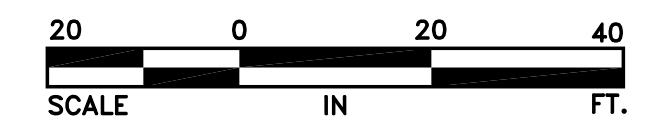
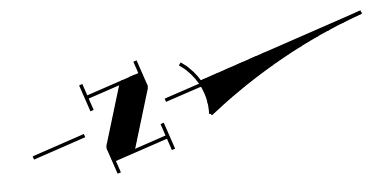


**Hakanson Anderson**  
 Civil Engineers and Land Surveyors  
 3601 Thurston Ave., Anoka, Minnesota 55303  
 763-427-5860 FAX 763-427-0520  
 www.hakanson-anderson.com

**STONE BROOK ACADEMY SITE  
 CONSTRUCTION PLANS**

**EXISTING TOPOGRAPHY PLAN**  
 CITY OF RAMSEY, MINNESOTA

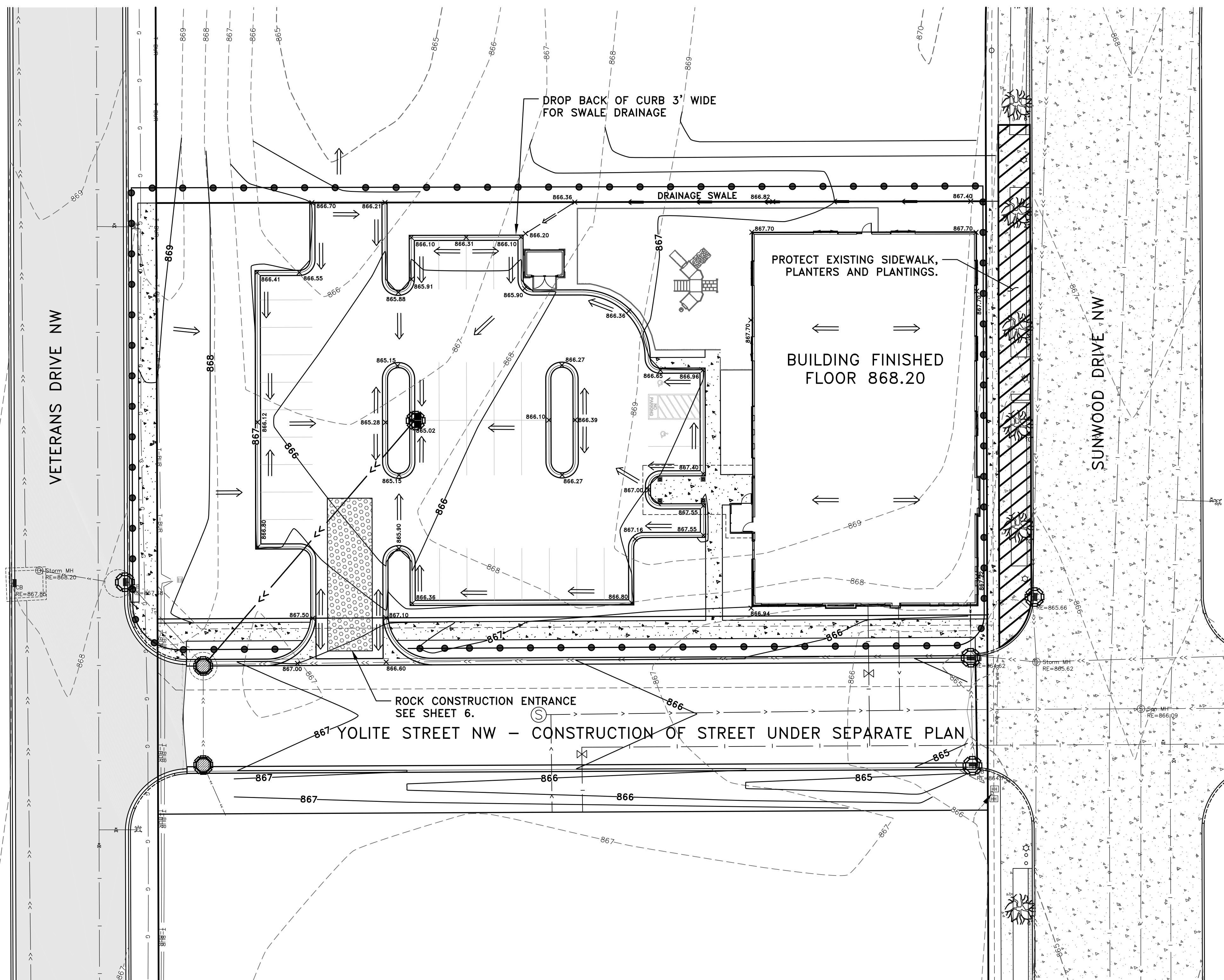
SHEET  
2  
OF  
6  
SHEETS



**LEGEND**

- 906 --- EXISTING CONTOUR
- 906 — PROPOSED CONTOUR
- - - - - DRAINAGE AND UTILITY EASEMENT
- — — — — PROPERTY LINE
- P-OH ——— OVERHEAD ELECTRIC
- P-BUR ——— UNDERGROUND ELECTRIC
- T-BUR ——— UNDERGROUND TELEPHONE
- G ——— UNDERGROUND GAS LINE
- ⊕ POWER POLE
- ⊕ GUY WIRE
- ⊕ LIGHT POLE
- >> - >> - EXISTING STORM SEWER
- ⊕ EXISTING CATCH BASIN
- ⊕ EXISTING STORM MANHOLE
- >> - >> - EXISTING SANITARY SEWER
- ⊕ EXISTING SANITARY MANHOLE
- - - - - EXISTING WATER SERVICE
- ==== EXISTING CONCRETE CURB
- ⊕ DECIDUOUS AND CONIFEROUS TREES
- >> - >> - PROPOSED STORM SEWER
- ⊕ PROPOSED CATCH BASIN
- ⊕ PROPOSED STORM MANHOLE
- >> - >> - PROPOSED SANITARY SEWER
- ⊕ PROPOSED SANITARY MANHOLE
- - - - - PROPOSED WATER SERVICE
- ==== PROPOSED CONCRETE CURB & GUTTER
- ② DETAIL NUMBER
- ③ SHEET NUMBER
- ⊕ INLET PROTECTION DEVICE SEE SHEET 6
- SILT FENCE SEE CITY STANDARD PLATE ERO-1 ON SHEET 5
- X= 908.55 PROPOSED FINISHED ELEVATION
- ⇒ DRAINAGE ARROW

- GENERAL NOTES:**
1. VERIFY BUILDING DIMENSIONS WITH ARCHITECTURAL PLANS.
  2. SEE THE UTILITY AND PAVING PLAN FOR STORM SEWER AND SEWER AND WATER SERVICE INFORMATION.
  3. SEE THE STORM WATER POLLUTION PREVENTION PLAN FOR ADDITIONAL REQUIREMENTS.



DATE	REVISION
6/1/17	CITY COMMENTS

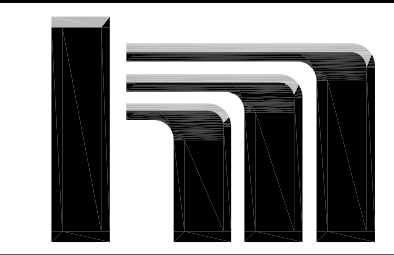
I hereby certify that this plan, specification, or report was prepared by me or under my direct supervision and that I am a duly Licensed Professional Engineer under the laws of the State of Minnesota.

*Craig J. Jochem*  
**CRAIG J. JOCHUM, P.E.**  
 Lic. No. 23461

DESIGNED BY:  
CJJ

DRAWN BY:  
MSS

CHECKED BY:  
CJJ

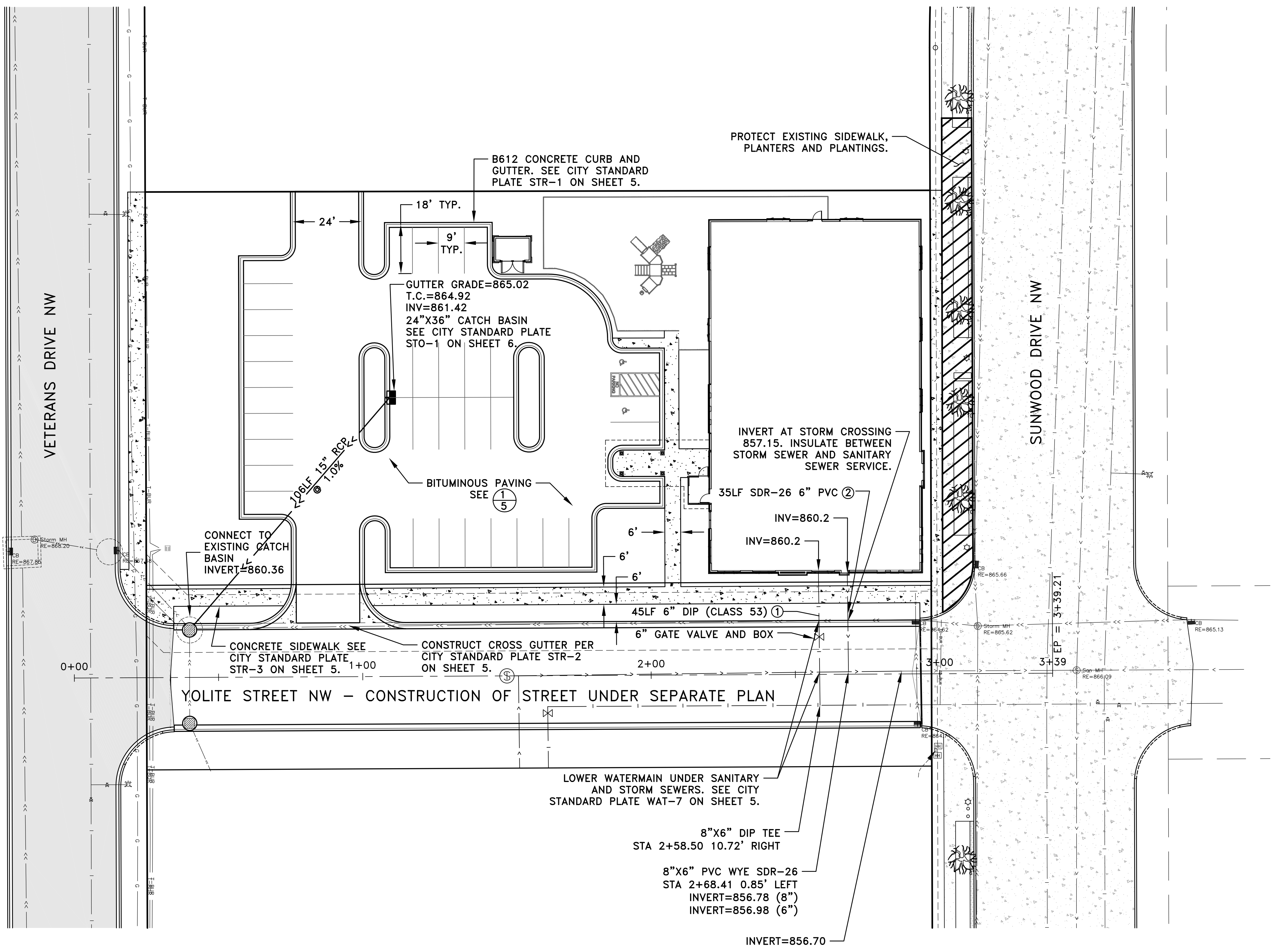
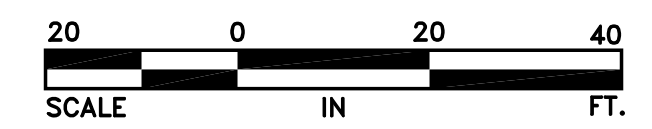
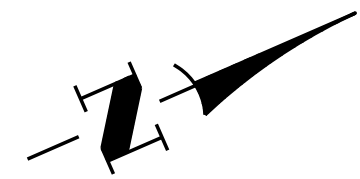


**Hakanson Anderson**  
 Civil Engineers and Land Surveyors  
 3601 Thurston Ave., Anoka, Minnesota 55303  
 763-427-5860 FAX 763-427-0520  
 www.hakanson-anderson.com

**STONE BROOK ACADEMY SITE  
 CONSTRUCTION PLANS**

**GRADING, DRAINAGE AND EROSION  
 CONTROL PLAN  
 CITY OF RAMSEY, MINNESOTA**

SHEET  
3  
OF  
6  
SHEETS



**LEGEND**

- DRAINAGE AND UTILITY EASEMENT
- PROPERTY LINE
- P-OH OVERHEAD ELECTRIC
- P-BUR UNDERGROUND ELECTRIC
- T-BUR UNDERGROUND TELEPHONE
- G UNDERGROUND GAS LINE
- ⊕ POWER POLE
- ⊕ GUY WIRE
- ⊕ LIGHT POLE
- >> EXISTING STORM SEWER
- ⊕ EXISTING CATCH BASIN
- ⊕ EXISTING STORM MANHOLE
- > EXISTING SANITARY SEWER
- ⊕ EXISTING SANITARY MANHOLE
- EXISTING WATER SERVICE
- === EXISTING CONCRETE CURB
- ⊕ DECIDUOUS AND CONIFEROUS TREES
- >> PROPOSED STORM SEWER
- ⊕ PROPOSED CATCH BASIN
- ⊕ PROPOSED STORM MANHOLE
- > PROPOSED SANITARY SEWER
- ⊕ PROPOSED SANITARY MANHOLE
- PROPOSED WATER SERVICE
- === PROPOSED CONCRETE CURB & GUTTER
- ② ← DETAIL NUMBER
- ③ ← SHEET NUMBER

**REFERENCE NOTES**

- ① SEE CITY STANDARD PLATE WAT-5 ON SHEET 6 FOR WATER SERVICE INSTALLATION.
- ② SEE CITY STANDARD PLATE SEW-3 ON SHEET 6 FOR SEWER SERVICE INSTALLATION. INSTALL 45° BENDS ON SERVICE WEST OF THE STORM SEWER TO MATCH INVERT AT BUILDING.

**GENERAL NOTES**

- 1. WATER SERVICE SHALL HAVE A MINIMUM BURY OF 7.5 FEET.
- 2. ALL DIP 6 INCH AND SMALLER SHALL BE CLASS 53.

DATE	REVISION
6/1/17	CITY COMMENTS

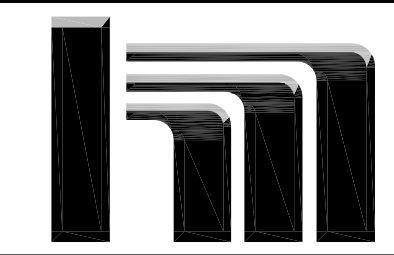
I hereby certify that this plan, specification, or report was prepared by me or under my direct supervision and that I am a duly Licensed Professional Engineer under the laws of the State of Minnesota.

*Craig J. Jochem*  
**CRAIG J. JOCHUM, P.E.**  
 Lic. No. 23461

DESIGNED BY:  
CJJ

DRAWN BY:  
MSS

CHECKED BY:  
CJJ



**Hakanson Anderson**  
 Civil Engineers and Land Surveyors  
 3601 Thurston Ave., Anoka, Minnesota 55303  
 763-427-5860 FAX 763-427-0520  
 www.hakanson-anderson.com

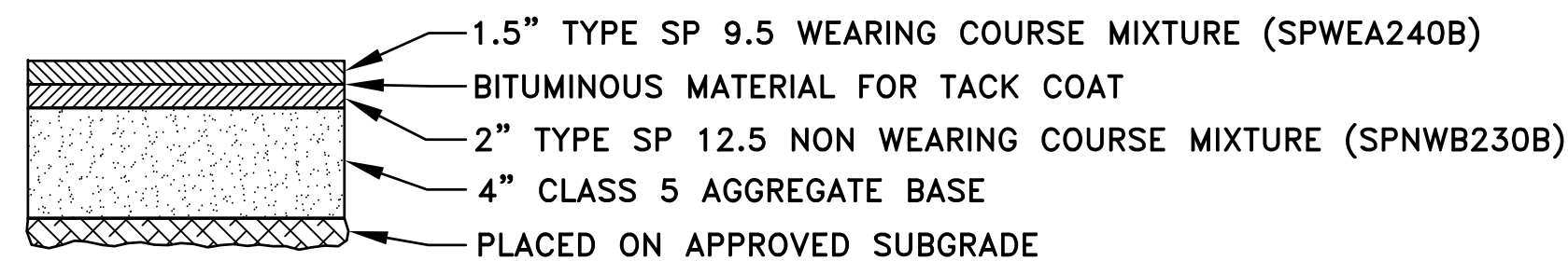
**STONE BROOK ACADEMY SITE  
 CONSTRUCTION PLANS**

**UTILITY AND PAVING PLAN  
 CITY OF RAMSEY, MINNESOTA**

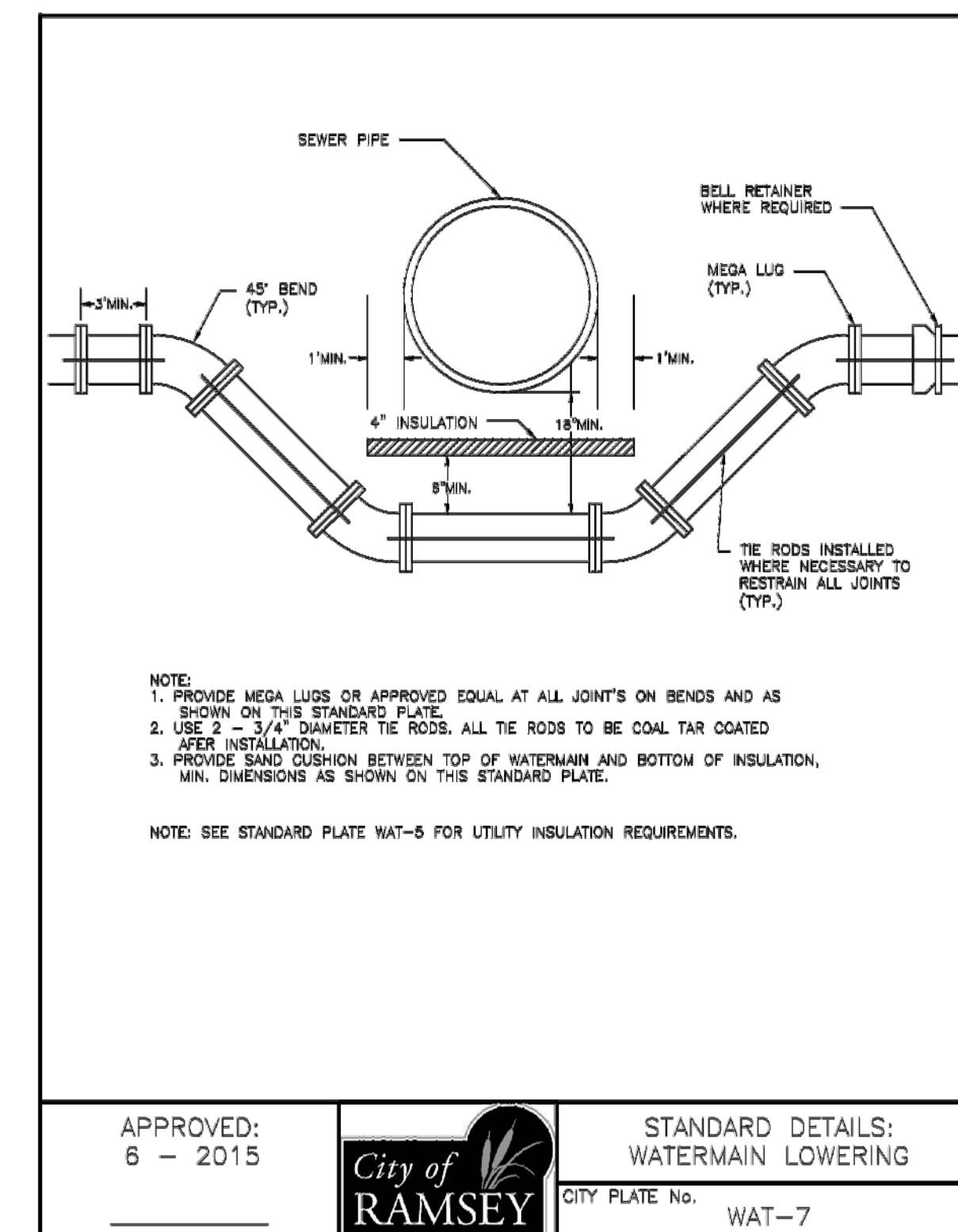
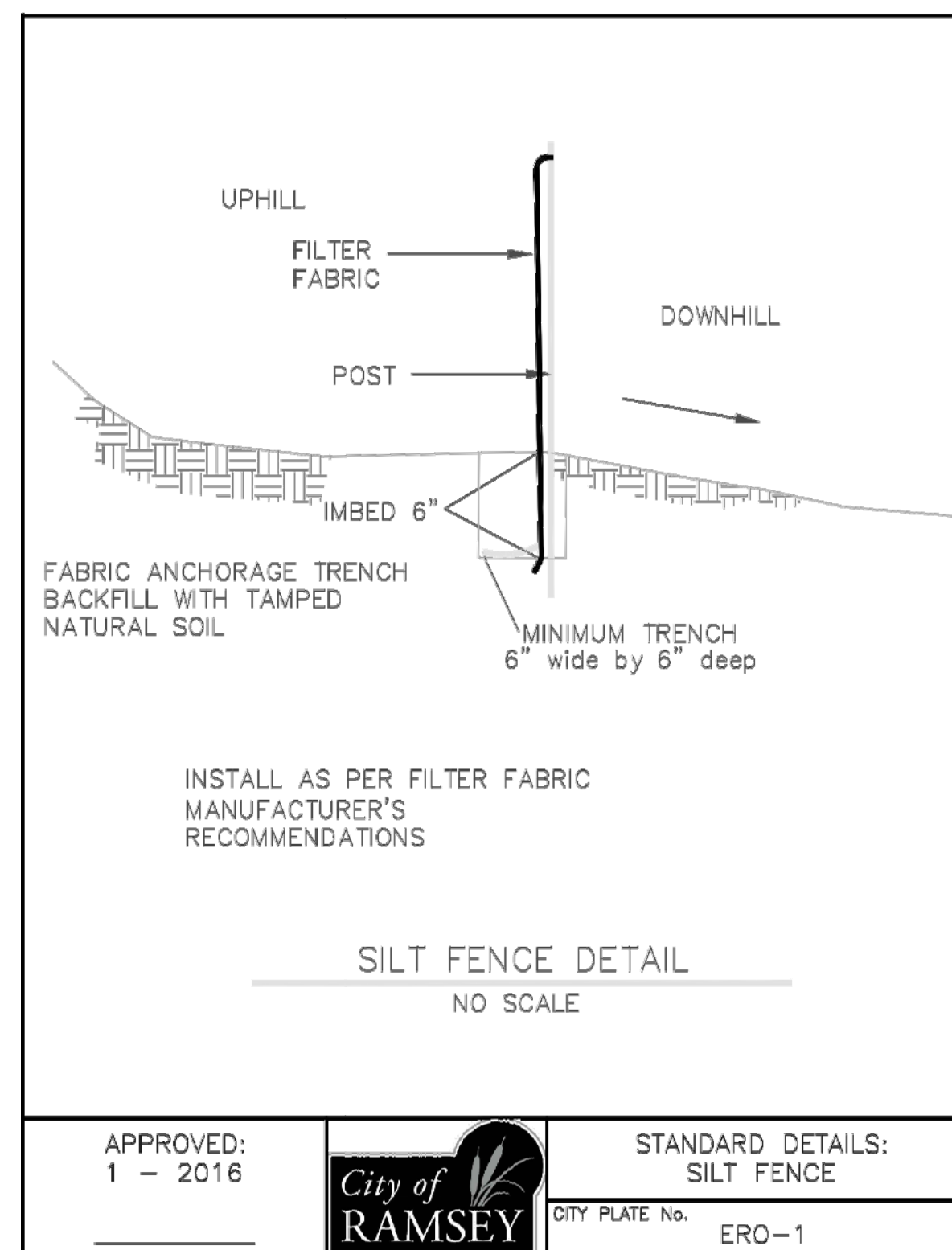
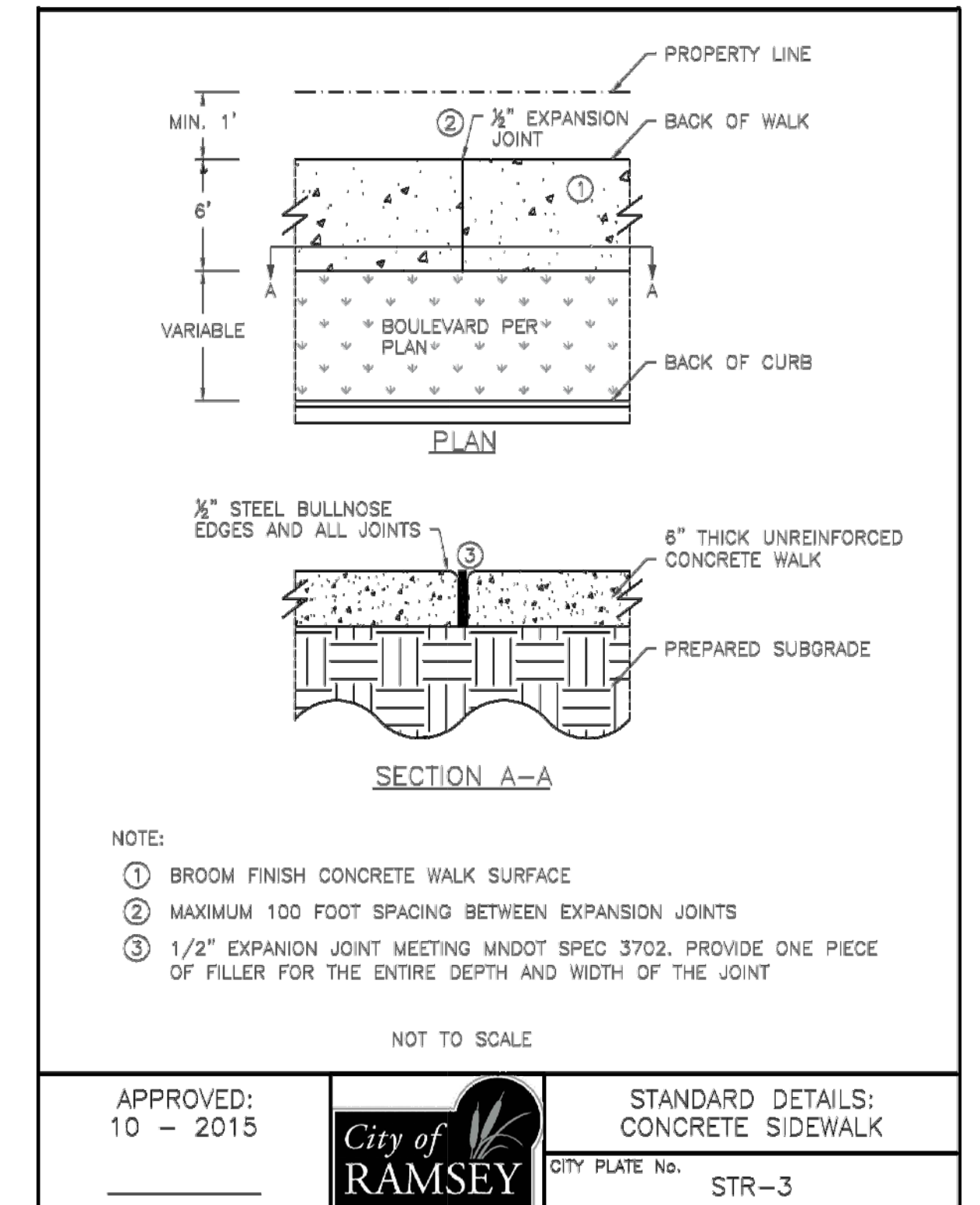
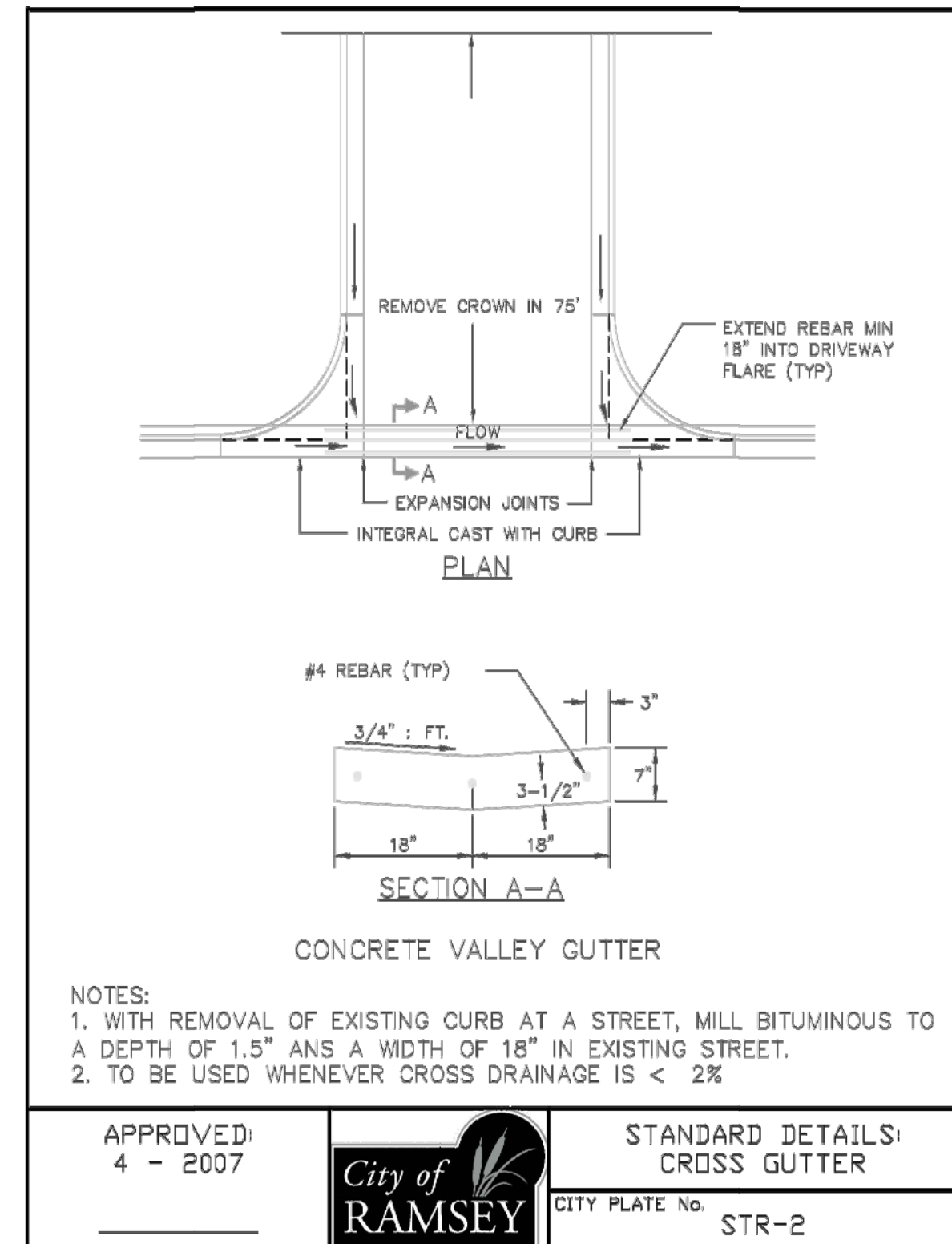
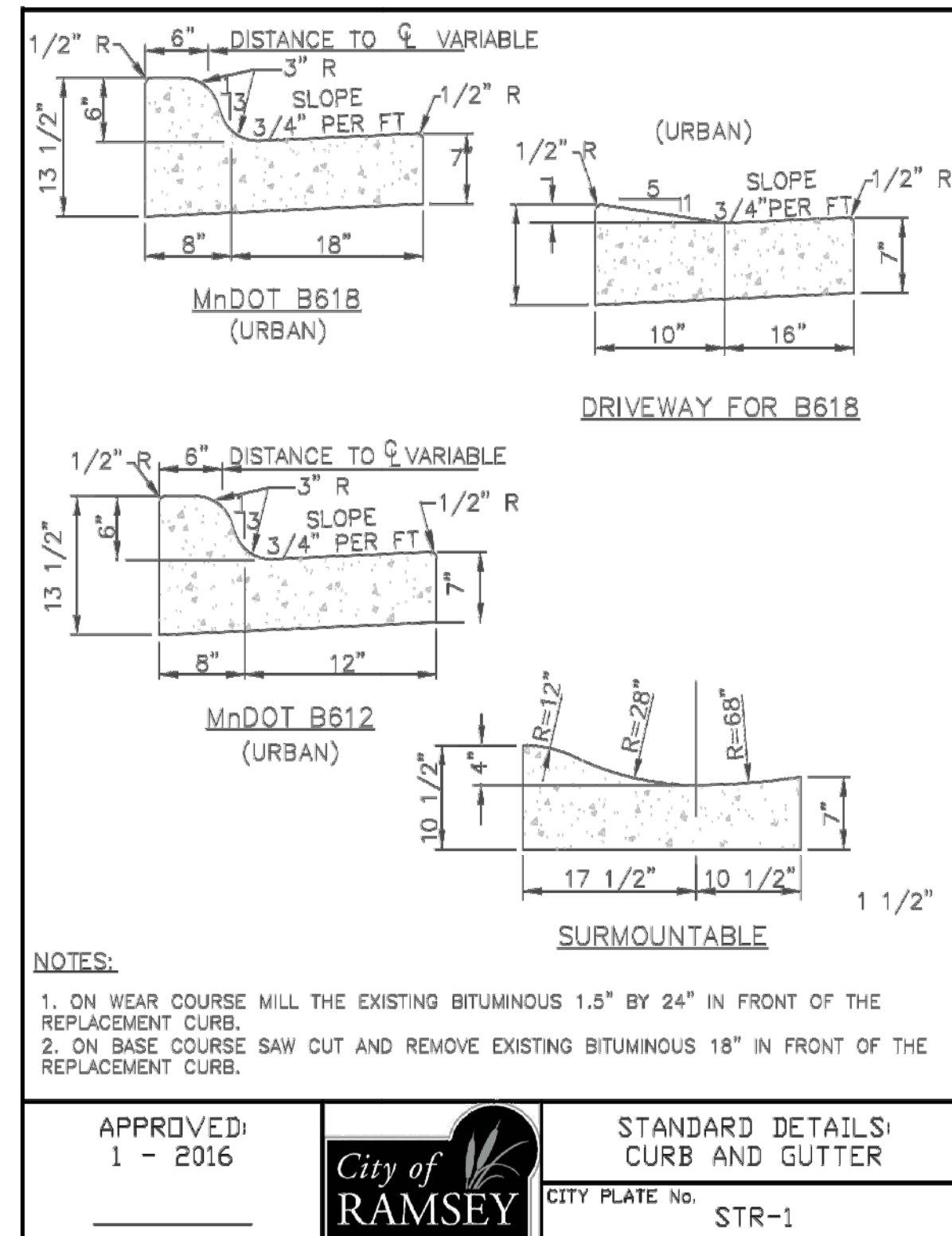
SHEET  
4  
OF  
6  
SHEETS

**GENERAL CONSTRUCTION AND SOILS NOTES:**

1. STRIP ALL INPLACE TOPSOIL IN AREAS TO BE DISTURBED BY CONSTRUCTION AND REUSE AS SLOPE DRESSING. IN AREAS OF PARKING LOT AND BUILDING CONSTRUCTION, THE EXPOSED SAND SHALL BE SURFACE COMPACTED TO AT LEAST 100% OF THE STANDARD PROCTOR MAXIMUM DRY DENSITY, ASTM D698, IN AT LEAST THE UPPER 3 FEET.
  2. UNLESS OTHERWISE RECOMMENDED IN THESE PLANS, THE GRADING SUBGRADE SHALL BE CONSTRUCTED OF SUITABLE GRADING MATERIAL. THE FILL SHALL BE PLACED IN 8" TO 10" LOOSE LIFTS, AND COMPACTED TO 100% OF THE STANDARD PROCTOR MAXIMUM DRY DENSITY.
  3. SUITABLE GRADING MATERIAL FOR THIS PROJECT SHALL CONSIST OF ALL SOILS ENCOUNTERED WITH THE EXCEPTION OF TOPSOIL, SILT, DEBRIS, ORGANIC MATERIAL AND OTHER UNSTABLE MATERIAL.
  4. PROVIDE A SAW CUT WHEN PLACING NEW PAVEMENT ADJACENT TO INPLACE PAVEMENT AND AT TERMINI OF CONSTRUCTION TO ENSURE A UNIFORM JOINT.
  5. BITUMINOUS AND CONCRETE ITEMS DISTURBED BY CONSTRUCTION SHALL BECOME THE PROPERTY OF THE CONTRACTOR AND SHALL BE DISPOSED OF IN ACCORDANCE WITH Mn/DOT SPEC. 2104.3.
  6. USE TACK COAT BETWEEN ALL BITUMINOUS MIXTURES. THE BITUMINOUS TACK COAT MATERIAL SHALL BE APPLIED AT A UNIFORM RATE OF 0.05 GAL/SY TO 0.07 GAL/SY BETWEEN BITUMINOUS LAYERS. THE APPLICATION RATES ARE FOR UNDILUTED EMULSIONS (AS SUPPLIED FROM THE REFINERY) OR MC AND RC LIQUID ASPHALTS.
  7. PERFORMANCE GRADED (PG) ASPHALT BINDER PG 58-28, SPEC. 3151, SHALL BE USED FOR ALL BITUMINOUS MIXES ON THIS PROJECT. SPECIFIC PG GRADES SHALL BE LISTED AT THE END OF THE MIX DESIGNATION NUMBER SHOWN ON THE TYPICAL SECTION.
  8. THE BITUMINOUS MIXTURES SHALL MEET THE REQUIREMENTS OF SPECIFICATIONS 2360 AND 3139.
  9. ALL DISTURBED AREAS SHALL BE RESTORED WITH 4" OF TOPSOIL AND SOD. SEE CITY STANDARD PLATE ERO-6 ON SHEET 6 FOR TOPSOIL REQUIREMENTS.
- GENERAL EROSION CONTROL NOTES:**
1. EROSION CONTROL SHALL CONFORM TO THE Mn/DOT EROSION CONTROL HANDBOOK.
  2. PRIOR TO ANY CONSTRUCTION ACTIVITIES, THE CONTRACTOR SHALL ACQUIRE THE NECESSARY MPCA NPDES STORMWATER PERMIT.
  3. THE CONTRACTOR SHALL INSTALL EROSION AND SEDIMENT CONTROL FACILITIES (BMP'S) PRIOR TO GRADING AND REMOVAL ACTIVITIES. BMP'S SHALL BE MAINTAINED FOR THE DURATION OF CONSTRUCTION ACTIVITIES AND POTENTIAL FOR EROSION HAS PASSED.
  4. THE CONTRACTOR SHALL SCHEDULE THEIR OPERATION TO MINIMIZE THE AMOUNT OF DISTURBED AREA AT ANY GIVEN TIME.
  5. BMP'S SHALL BE INSPECTED DAILY BY THE CONTRACTOR. OBSERVATIONS SHALL BE RECORDED IN THE INSPECTION LOG.
  6. ALL EROSION AND SEDIMENT CONTROL MEASURES SHALL BE PROPERLY DISPOSED OF WITHIN THIRTY (30) DAYS AFTER FINAL SITE STABILIZATION.
  7. THE CONTRACTOR SHALL FILE A NOTICE OF TERMINATION WITH THE MPCA AFTER FINAL STABILIZATION HAS BEEN APPROVED. THE CITY MUST APPROVE THE NOTICE OF TERMINATION PRIOR TO SUBMITTAL. ALL EROSION CONTROL INSPECTION LOGS MUST BE SUBMITTED TO THE CITY PRIOR TO ISSUANCE OF THE CERTIFICATE OF OCCUPANCY.
  8. STREETS SHALL BE CLEANED WITHIN 3 HOURS AFTER NOTIFICATION BY CITY THAT SWEEPING IS REQUIRED.



**1**  
**5** BITUMINOUS PAVEMENT SECTION  
NO SCALE

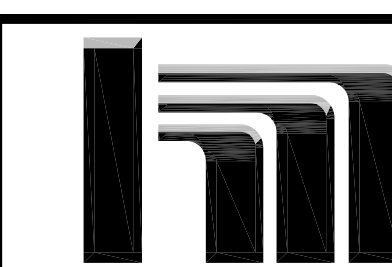


DATE	REVISION
6/1/17	CITY COMMENTS

I hereby certify that this plan, specification, or report was prepared by me or under my direct supervision and that I am a duly Licensed Professional Engineer under the laws of the State of Minnesota.

*Craig J. Jochum*  
Date 5-4-17 CRAIG J. JOCHUM, P.E.  
Lic. No. 23461

DESIGNED BY: CJJ  
DRAWN BY: MSS  
CHECKED BY: CJJ

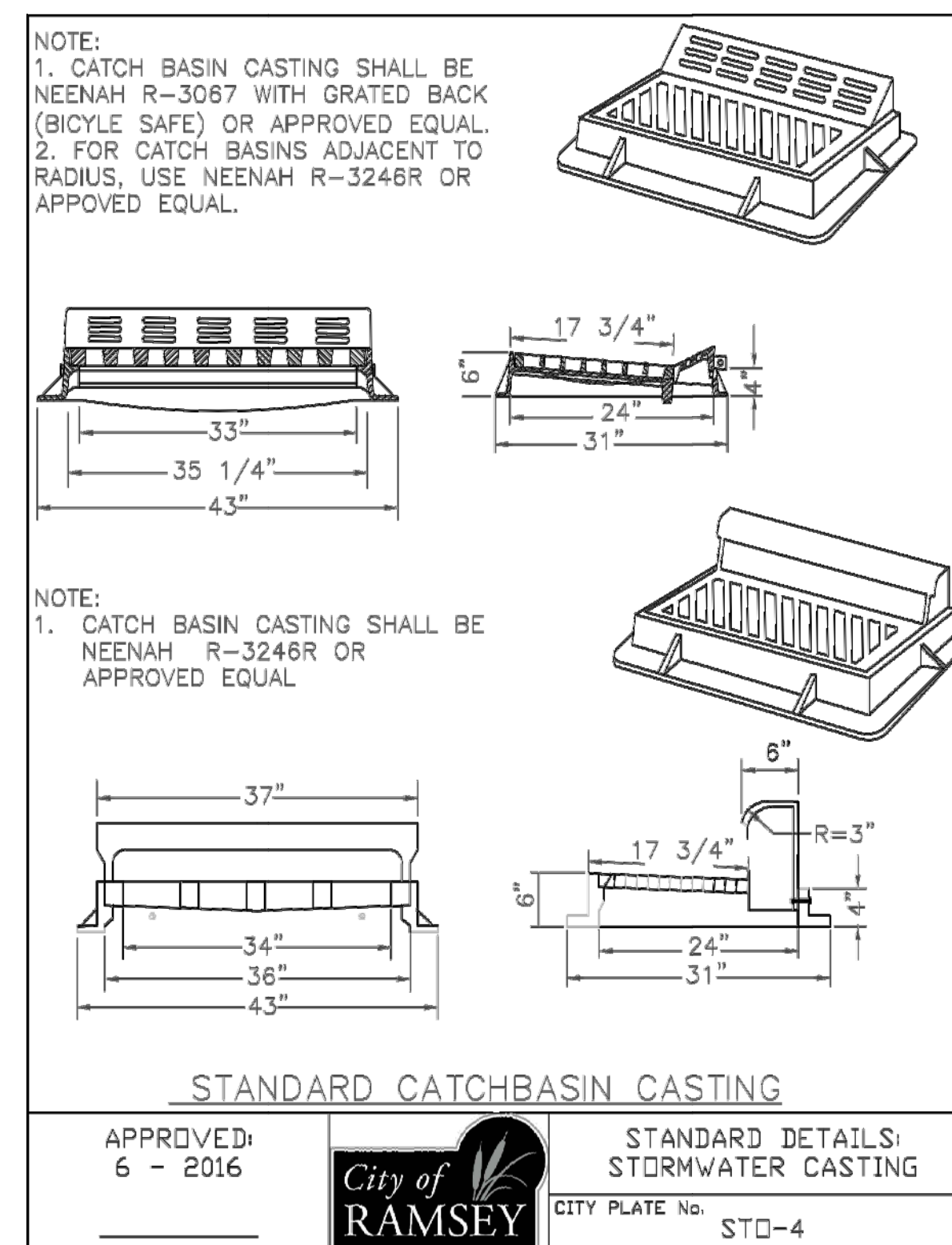
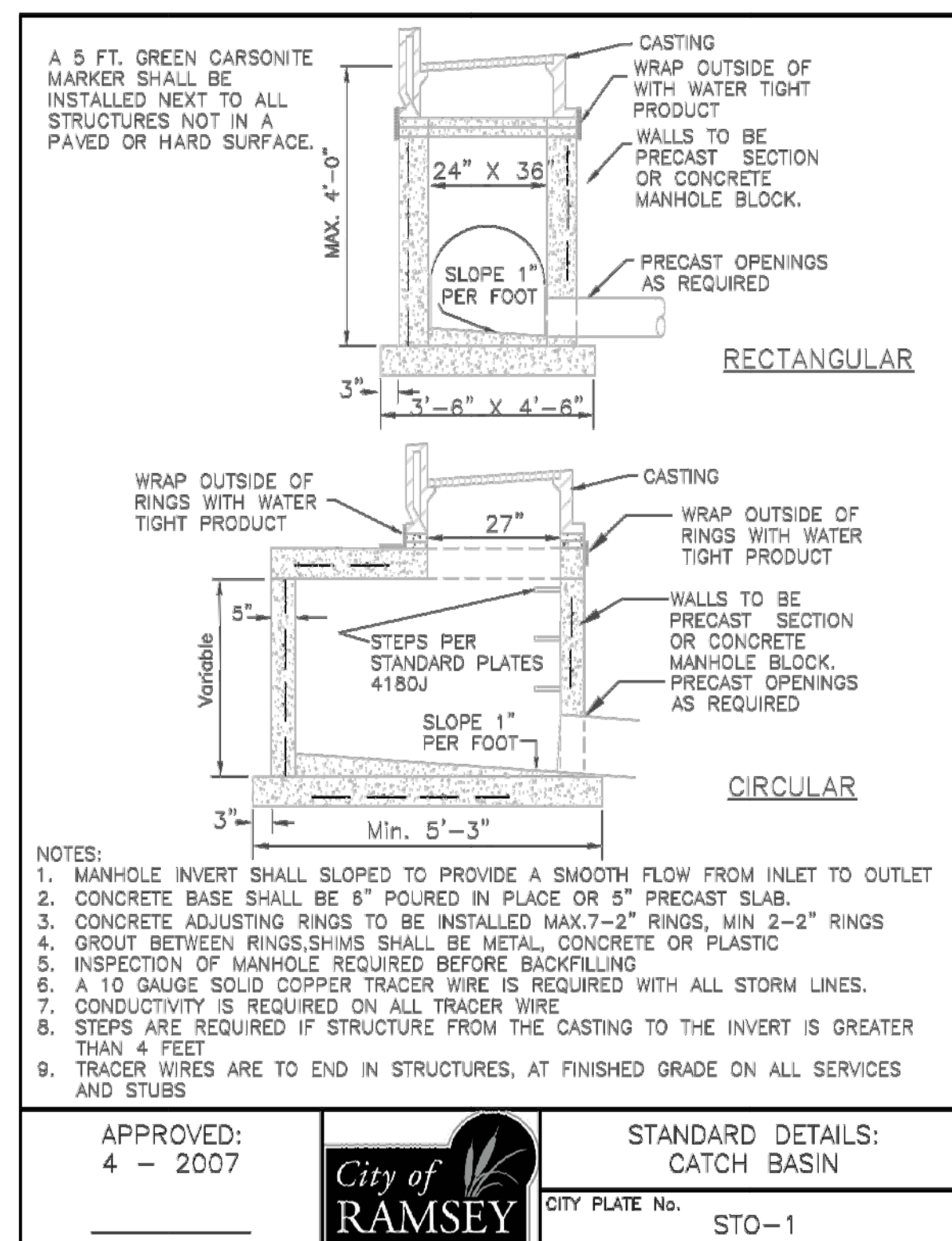
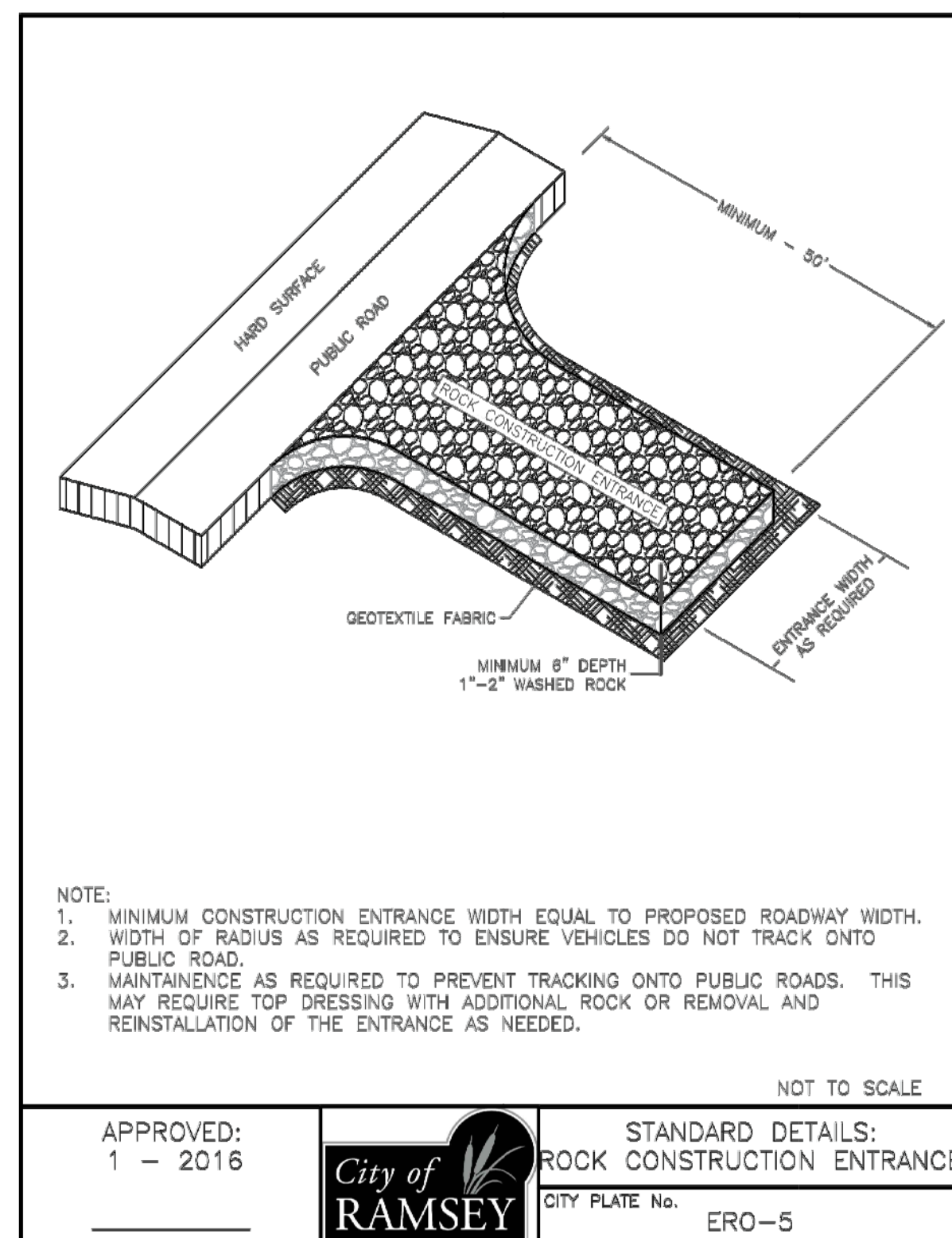
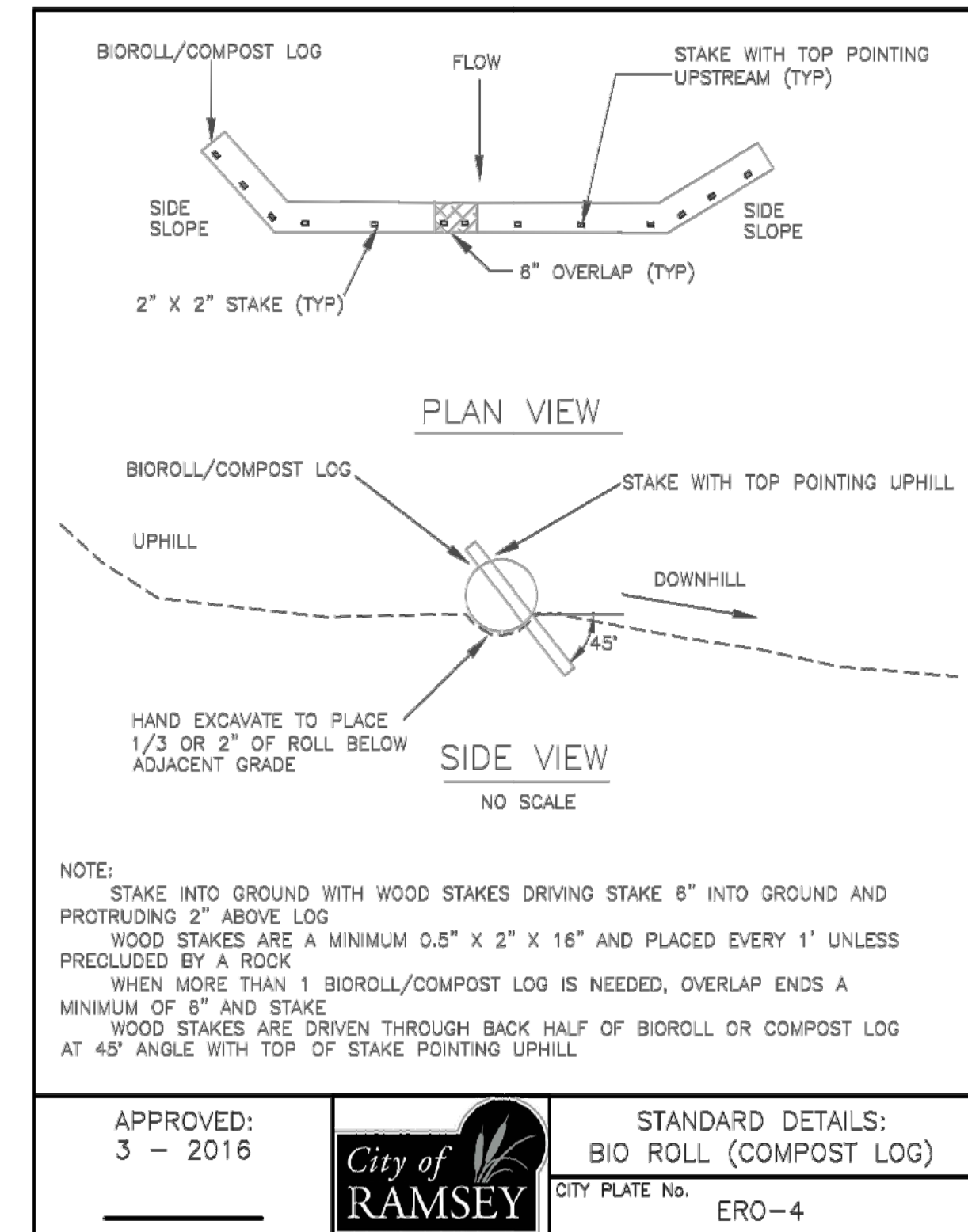
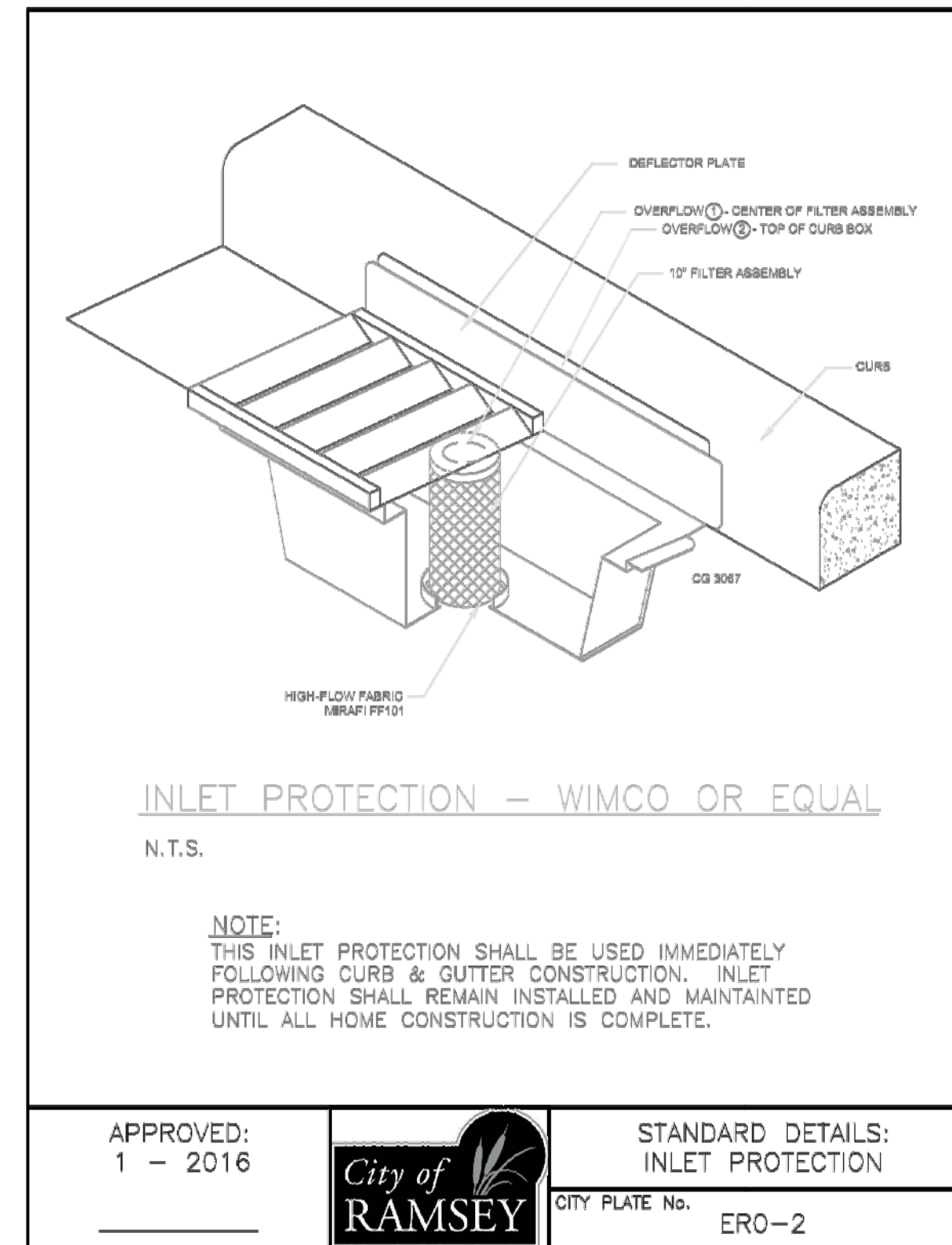
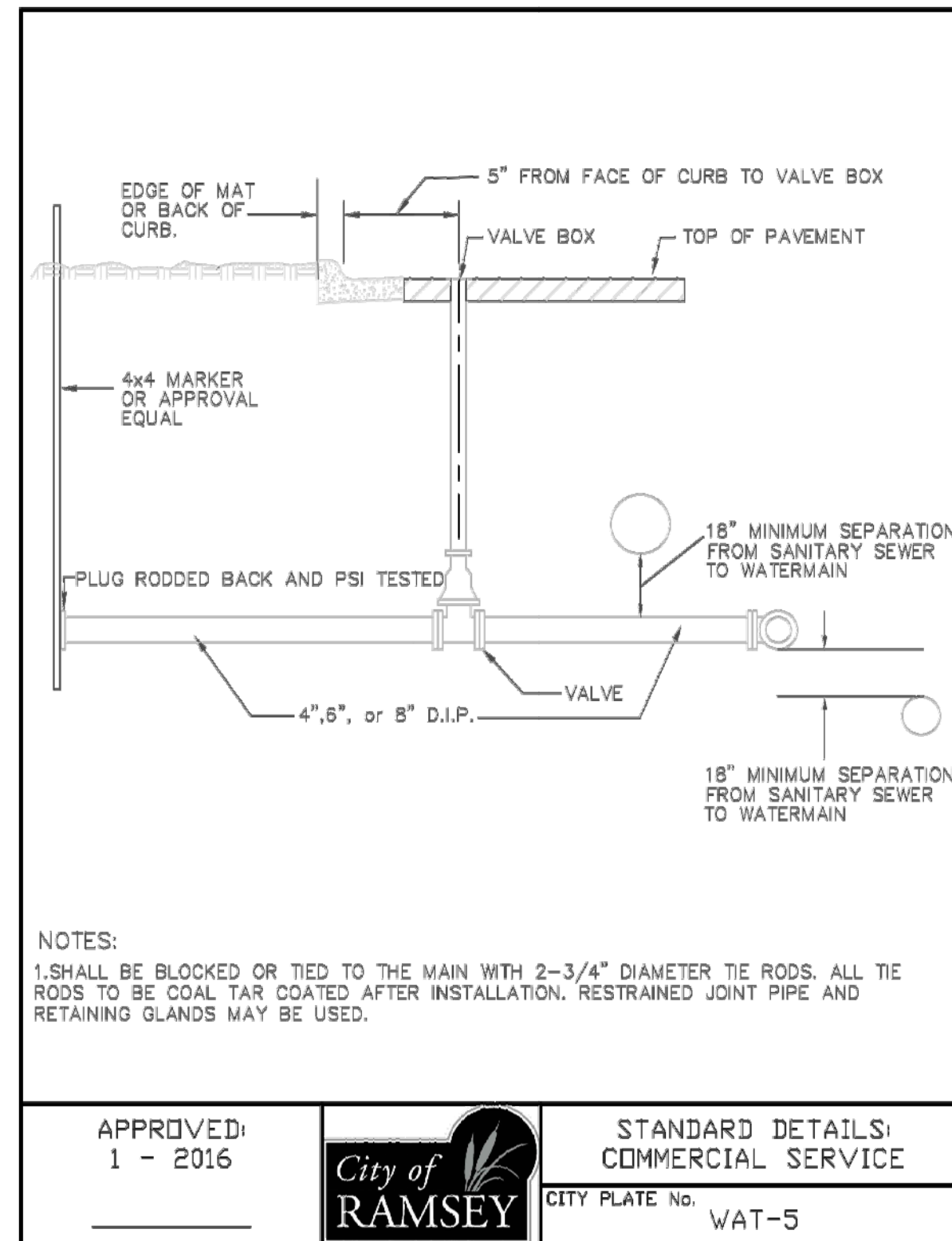
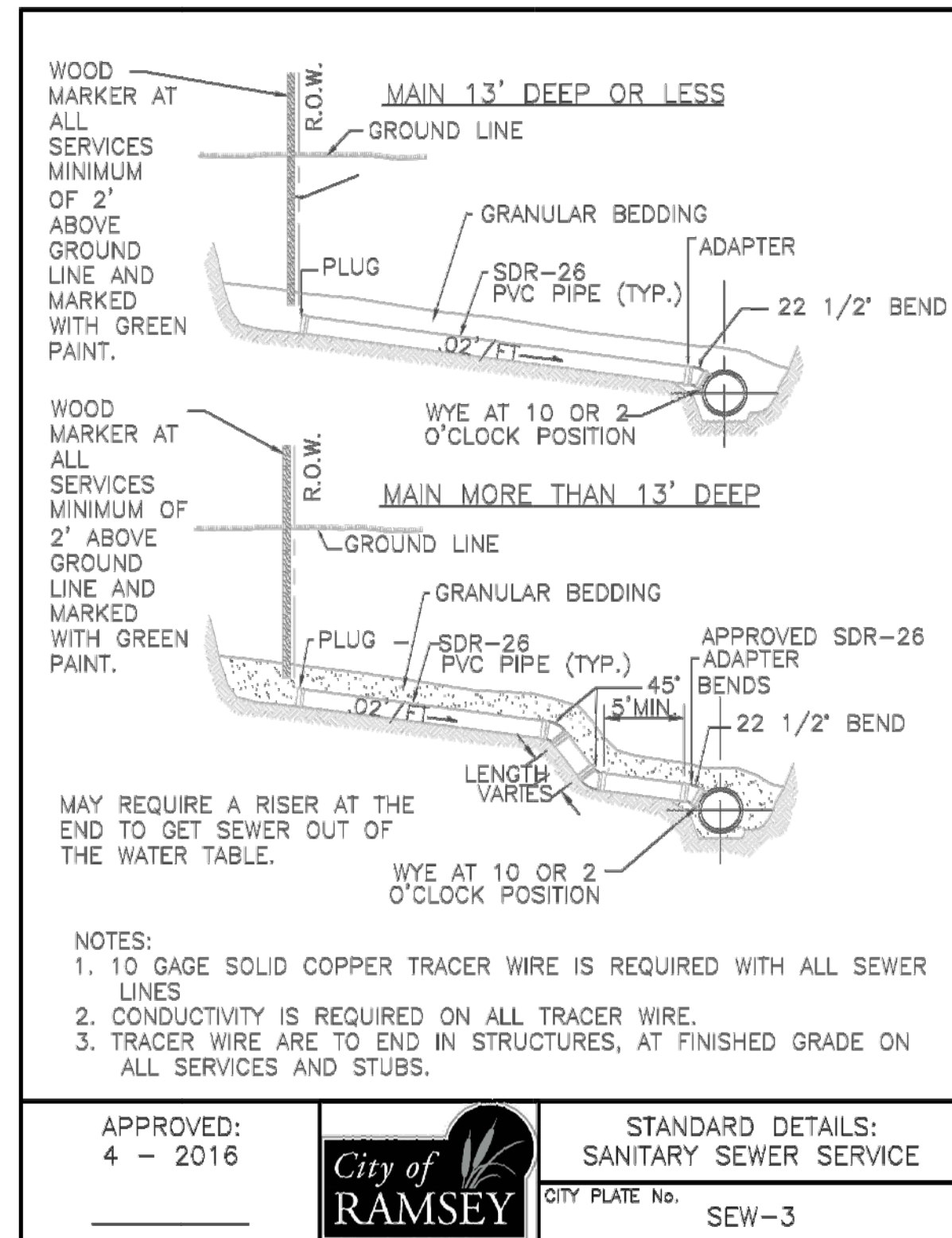


**Hakanson Anderson**  
Civil Engineers and Land Surveyors  
3601 Thurston Ave., Anoka, Minnesota 55303  
763-427-5860 FAX 763-427-0520  
www.hakanson-anderson.com

**STONE BROOK ACADEMY SITE**  
**CONSTRUCTION PLANS**

**GENERAL CONSTRUCTION NOTES**  
**AND DETAILS**  
**CITY OF RAMSEY, MINNESOTA**

SHEET 5 OF 6 SHEETS



MNDOT 2016 SPEC

MNDOT 2016 SPEC TABLE 3877-1 COMMON TOPSOIL BORROW		
REQUIREMENT	RANGE	TEST METHOD
MATERIAL PASSING THE 3/4 IN [19MM]	100%	ASTM D 422
MATERIAL PASSING NO. 4 [4.75MM]	>85%	-
CLAY	5% - 35%	ASTM D 422
SILT	5% - 70%	ASTM D 422
SAND	10% - 75%	ASTM D 422
ORGANIC MATTER	3% - 15%	ASTM D 2974
pH	6.1-7.8	ASTM G 51

NOTE:

1. INSTALLATION OF 4" OF TOPSOIL MEETING MNDOT SPECIFICATION 3877A COMMON TOPSOIL BORROW, MAY BE REQUIRED ACROSS ALL DISTURBED AREAS.

2. A SOIL CERTIFICATION FROM A GEOTECHNICAL FIRM MUST BE PROVIDED VERIFYING THE TOPSOIL MEETS SPECIFICATION ALONG WITH LOAD TICKETS TO VERIFY THE SOURCE OF MATERIAL AND QUANTITY.

3. TOPSOIL MUST COME FROM A CITY APPROVED SOURCE.

APPROVED: 1 - 2016

City of RAMSEY

CITY PLATE No. ERO-6

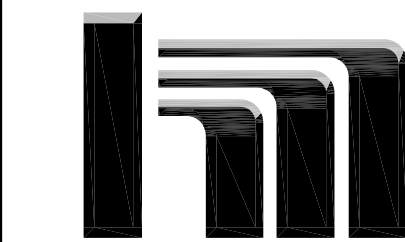
STANDARD DETAILS: TOPSOIL REQUIREMENTS

DATE	REVISION
6/1/17	CITY COMMENTS

I hereby certify that this plan, specification, or report was prepared by me or under my direct supervision and that I am a duly Licensed Professional Engineer under the laws of the State of Minnesota.

*Craig J. Jochem*  
 CRAIG J. JOCHUM, P.E.  
 Lic. No. 23461

DESIGNED BY: CJJ  
 DRAWN BY: MSS  
 CHECKED BY: CJJ



Hakanson Anderson  
 Civil Engineers and Land Surveyors  
 3601 Thurston Ave., Anoka, Minnesota 55303  
 763-427-5860 FAX 763-427-0520  
 www.hakanson-anderson.com

STONE BROOK ACADEMY SITE  
 CONSTRUCTION PLANS

DETAILS  
 CITY OF RAMSEY, MINNESOTA

SHEET 6 OF 6 SHEETS