

# CITY IMPROVEMENT PROJECT #17-13

## POTASSIUM STREET CUL-DE-SAC IMPROVEMENTS

### CONSTRUCTION PLANS

#### CITY OF RAMSEY

### GOVERNING SPECIFICATIONS

THE 2016 EDITION OF THE MINNESOTA DEPARTMENT OF TRANSPORTATION STANDARD SPECIFICATIONS FOR CONSTRUCTION AND THE 2013 CEAM STANDARD SPECIFICATIONS SHALL APPLY.

ALL FEDERAL, STATE AND LOCAL LAWS, REGULATIONS, AND ORDINANCES SHALL BE COMPLIED WITH IN THE CONSTRUCTION OF THIS PROJECT.

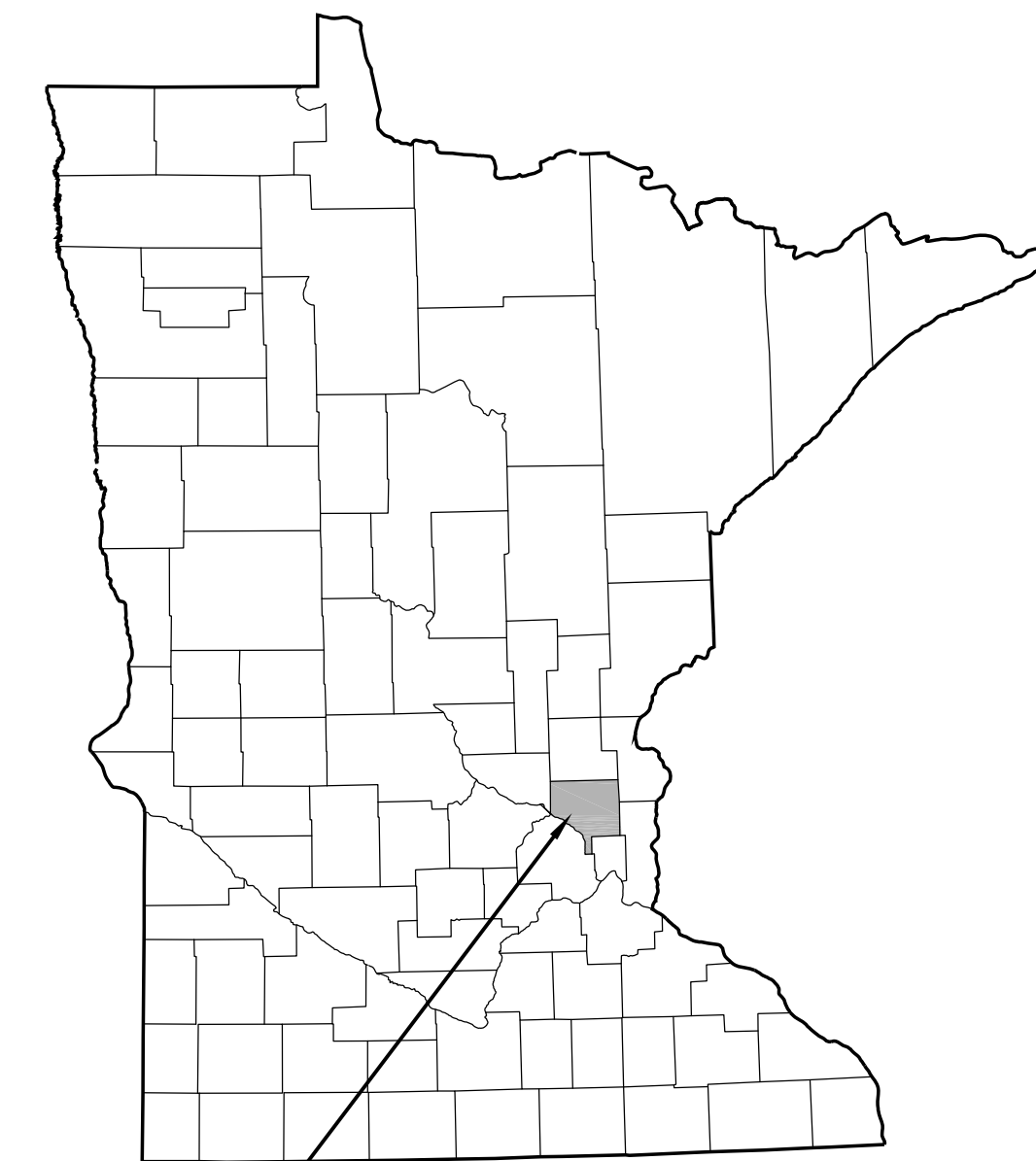
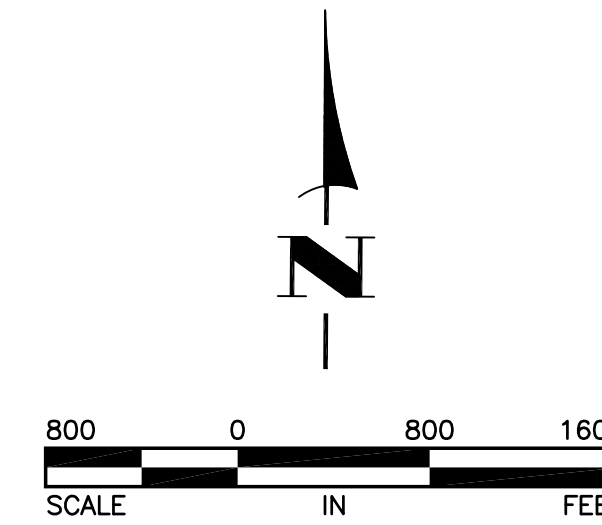
ALL TRAFFIC CONTROL DEVICES AND SIGNING SHALL CONFORM TO THE LATEST EDITION OF THE MINNESOTA MANUAL ON UNIFORM TRAFFIC CONTROL DEVICES, INCLUDING THE LATEST FIELD MANUAL FOR TEMPORARY TRAFFIC CONTROL ZONE LAYOUTS.

ALL REQUIREMENTS OF THE PROJECT MANUAL FOR THE YOLITE STREET PROJECT.

### SHEET INDEX

THIS PLAN CONTAINS 7 SHEETS

| SHEET NO. | DESCRIPTION                       |
|-----------|-----------------------------------|
| 1         | TITLE                             |
| 2         | ESTIMATED QUANTITIES              |
| 3         | DETAILS                           |
| 4         | REMOVALS PLAN                     |
| 5         | CONSTRUCTION PLAN                 |
| 6         | GRADING PLAN                      |
| 7         | EROSION AND SEDIMENT CONTROL PLAN |



CITY OF RAMSEY,  
ANOKA COUNTY,  
MINNESOTA

APPROVED: \_\_\_\_\_ DATE: \_\_\_\_\_  
 BRUCE WESTBY, P.E.  
 CITY ENGINEER

I hereby certify that this plan, specification, or report was prepared by me or under my direct supervision and that I am a duly Licensed Professional Engineer under the laws of the State of Minnesota.

*Shane Nelson*      43381      DATE 6/23/17  
 SHANE NELSON, P.E.      LIC. NO.  
 HAKANSON ANDERSON ASSOCIATES, INC.  
 DESIGN ENGINEER

| DATE    | REVISION               |
|---------|------------------------|
| 6/29/17 | CITY COMMENTS          |
| 8/4/17  | CITY COMMENTS          |
| 9/28/17 | SHIFT CUL-DE-SAC SOUTH |
|         |                        |
|         |                        |

THE SUBSURFACE UTILITY INFORMATION IN THIS PLAN IS UTILITY QUALITY LEVEL D. THIS QUALITY LEVEL WAS DETERMINED ACCORDING TO THE GUIDELINES OF CI/ASCE 38-2, ENTITLED "STANDARD GUIDELINES FOR THE COLLECTION AND DEPICTION OF EXISTING SUBSURFACE UTILITY DATA."

**Hakanson  
Anderson**  
 Civil Engineers and Land Surveyors  
 3601 Thurston Ave., Anoka, Minnesota 55303  
 763-427-5860 FAX 763-427-0520

**ESTIMATED QUANTITIES**

| ITEM NO | SPEC REFERENCE | ITEM DESCRIPTION                        | UNIT | ESTIMATED QUANTITY |
|---------|----------------|---|------|--------------------|
| 1       | 2021           | MOBILIZATION                            | LS   | 1                  |
| 2       | 2101           | CLEARING AND GRUBBING                   | LS   | 1                  |
| 3       | 2104           | SAWCUT BITUMINOUS PAVEMENT (FULL DEPTH) | LF   | 21                 |
| 4       | 2104           | REMOVE BITUMINOUS PAVEMENT              | SF   | 2210               |
| 5       | 2105           | SALVAGE AND RESPREAD TOPSOIL            | CY   | 170                |
| 6       | 2105           | COMMON EXCAVATION (P)                   | CY   | 784                |
| 7       | 2211           | AGGREGATE SURFACING CLASS 5 MODIFIED    | CY   | 240                |
| 8       | 2563           | TRAFFIC CONTROL                         | LS   | 1                  |
| 9       | 2573           | SILT FENCE                              | LF   | 300                |
| 10      | 2573           | INLET PROTECTION                        | EACH | 1                  |
| 11      | 2575           | TURF ESTABLISHMENT                      | LS   | 1                  |

CONSTRUCTION NOTES:

1. THE CONTRACTOR MUST INSTALL SILT FENCE PRIOR TO BEGINNING EARTH DISTURBING ACTIVITIES. CONTRACTOR MUST MAINTAIN LOCAL ACCESS FOR THE DURATION OF THE CONSTRUCTION.
2. ALL EXCESS MATERIAL BECOMES THE PROPERTY OF THE CONTRACTOR AND SHALL BE DISPOSED OF AT AN OFF-SITE LOCATION.
3. OWNER'S REPRESENTATIVE MUST VERIFY TOPSOIL STRIPPING IS COMPLETE BEFORE CONTRACTOR BEGINS GRADING.
4. CONTRACTOR SHALL COORDINATE GRADING WITH UTILITY COMPANIES AND ALLOW FOR HOLDING AND/OR RELOCATING OF FACILITIES, IF NECESSARY.
5. OWNER'S REPRESENTATIVE MUST APPROVE SUBGRADE BEFORE CONTRACTOR BEGINS PLACING GRAVEL.
6. GRAVEL SURFACE MUST BE SHAPED TO PROVIDE A SMOOTH, UNIFORM GRADE.
7. OWNER'S REPRESENTATIVE MUST APPROVE SEEDING PREPARATION BEFORE CONTRACTOR BEGINS SEEDING.
8. CONTRACTOR IS RESPONSIBLE FOR MAINTAINING THE TURF UNTIL IT HAS BEEN ACCEPTED BY THE OWNER. REPAIR WASHOUTS AND RE-SEED AREAS THAT FAIL TO SPROUT AT NO ADDITIONAL EXPENSE TO THE OWNER.
9. SILT FENCE IS TO BE MAINTAINED DURING CONSTRUCTION AND REMOVED BY THE CONTRACTOR UPON ESTABLISHMENT OF TURF.
10. CONTRACTOR MUST LOAD AND HAUL AGGREGATE SURFACING CLASS 5 MODIFIED MATERIAL FROM CITY-OWNED STOCKPILE LOCATED IN THE SOUTHEAST QUADRANT OF 143RD AVENUE NW AND JASPER STREET NW AS SHOWN OF TITLE SHEET.
11. EXISTING BITUMINOUS PAVEMENT DEPTH VARIES FROM 0-2 INCHES.

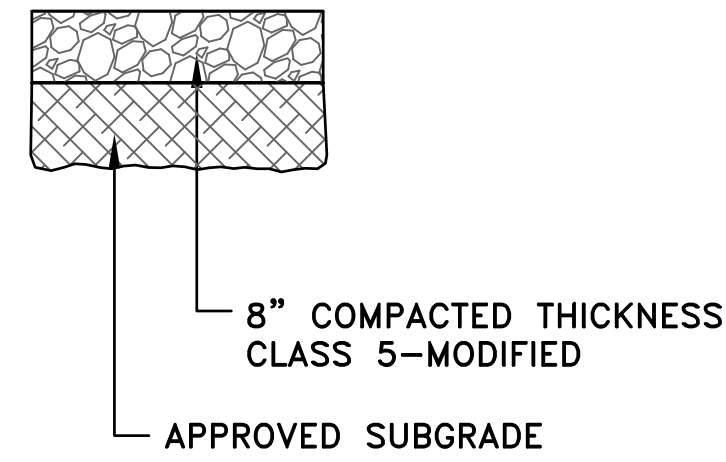
**EARTHWORK BALANCE**

|                              |        |
|------------------------------|--------|
| CUT FROM EARTHWORK TABLE     | 601 CY |
| FILL FROM EARTHWORK TABLE    | 27 CY  |
| ADDITIONAL CUT FOR AGGREGATE | 183 CY |

ESTIMATED EXCESS MATERIAL TO BE HAULED OFF SITE 757 CY

| EARTHWORK SUMMARY |       |
|-------------------|-------|
| CUT               | FILL  |
| 601 CY            | 27 CY |

|         |                        |   |              |   |   |   |                                 |
|---------|------------------------|---|--------------|---|---|---|---------------------------------|
| DATE    | REVISION               | I hereby certify that this plan, specification, or report was prepared by me or under my direct supervision and that I am a duly licensed Professional Engineer under the laws of the State of Minnesota.<br><br>SHANE M. NELSON, P.E.<br>Lic. No. 43381 | DESIGNED BY: |  Hakanson Anderson<br>Civil Engineers and Land Surveyors<br>3601 Thurston Ave., Anoka, Minnesota 55303<br>763-427-5860 FAX 763-427-0520<br>www.hakanson-anderson.com | IMPROVEMENT PROJECT #17-13<br>POTASSIUM STREET CUL-DE-SAC | ESTIMATED QUANTITIES<br>CITY OF RAMSEY, MINNESOTA | SHEET<br>2<br>OF<br>7<br>SHEETS |
| 6/28/17 | CITY COMMENTS          |   | SMN          |   |   |   |                                 |
| 8/4/17  | CITY COMMENTS          |   | MSS          |   |   |   |                                 |
| 8/9/17  | REVISE TABLE           |   |              |   |   |   |                                 |
| 9/28/17 | SHIFT CUL-DE-SAC SOUTH |   | SMN          |   |   |   |                                 |



**TYPICAL SECTION-AGGREGATE** (1)  
NOT TO SCALE (3)

**TABLE A  
MODIFIED CLASS 5  
SPECIFICATIONS**

% PASSING

|        |          |
|--------|----------|
| 1"     | 100      |
| 3/4"   | 90 - 100 |
| 3/8"   | 50 - 80  |
| No.4   | 35 - 70  |
| No.10  | 20 - 60  |
| No.40  | 10 - 35  |
| No.200 | 5 - 10   |

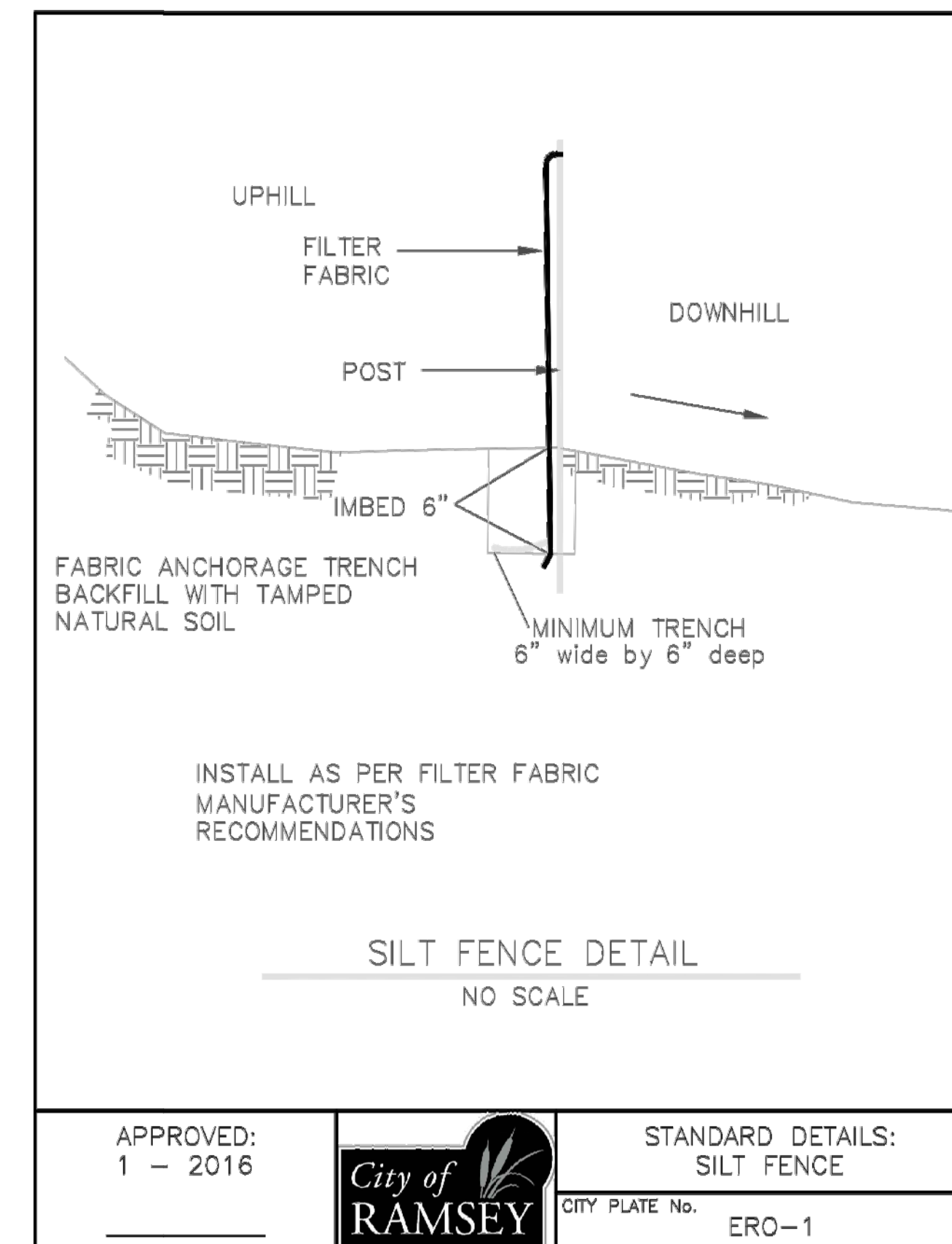
NOTES:  
1. THE AGGREGATE BASE CONSTRUCTION WILL BE ACCEPTED FOR PAYMENT IN ACCORDANCE WITH THE PROVISIONS IN TABLE A.  
2. IF THE AGGREGATE BASE FAILS TO MEET THE REQUIREMENTS OF TABLE A THE MATERIAL CAN BE CORRECTED IN PLACE OR REMOVED AND REPLACED WITH MATERIAL THAT MEET THE REQUIREMENTS OF TABLE A.  
3. IN THE EVENT THAT RECYCLED MATERIAL IS USE IT MUST MEET MNDOT REQUIREMENTS FOR RECYCLED BASE.

APPROVED:  
2 - 2003



STANDARD DETAILS:  
MODIFIED CLASS 5  
SPECIFICATIONS

CITY PLATE No. STR-26



APPROVED:  
1 - 2016



STANDARD DETAILS:  
SILT FENCE

CITY PLATE No. ERO-1

| DATE    | REVISION      |
|---------|---------------|
| 6/28/17 | CITY COMMENTS |
| 8/4/17  | CITY COMMENTS |
|         |               |
|         |               |
|         |               |

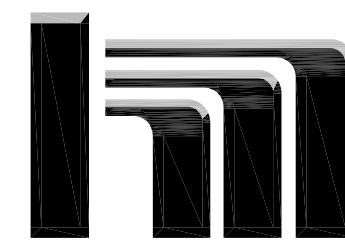
I hereby certify that this plan, specification, or report was prepared by me or under my direct supervision and that I am a duly licensed Professional Engineer under the laws of the State of Minnesota.

*Shane M. Nelson*  
SHANE M. NELSON, P.E.  
Date 6-23-17 Lic. No. 43381

DESIGNED BY:  
SMN

DRAWN BY:  
MSS

CHECKED BY:  
SMN

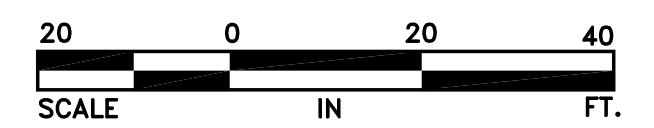
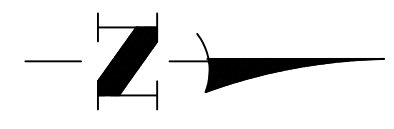
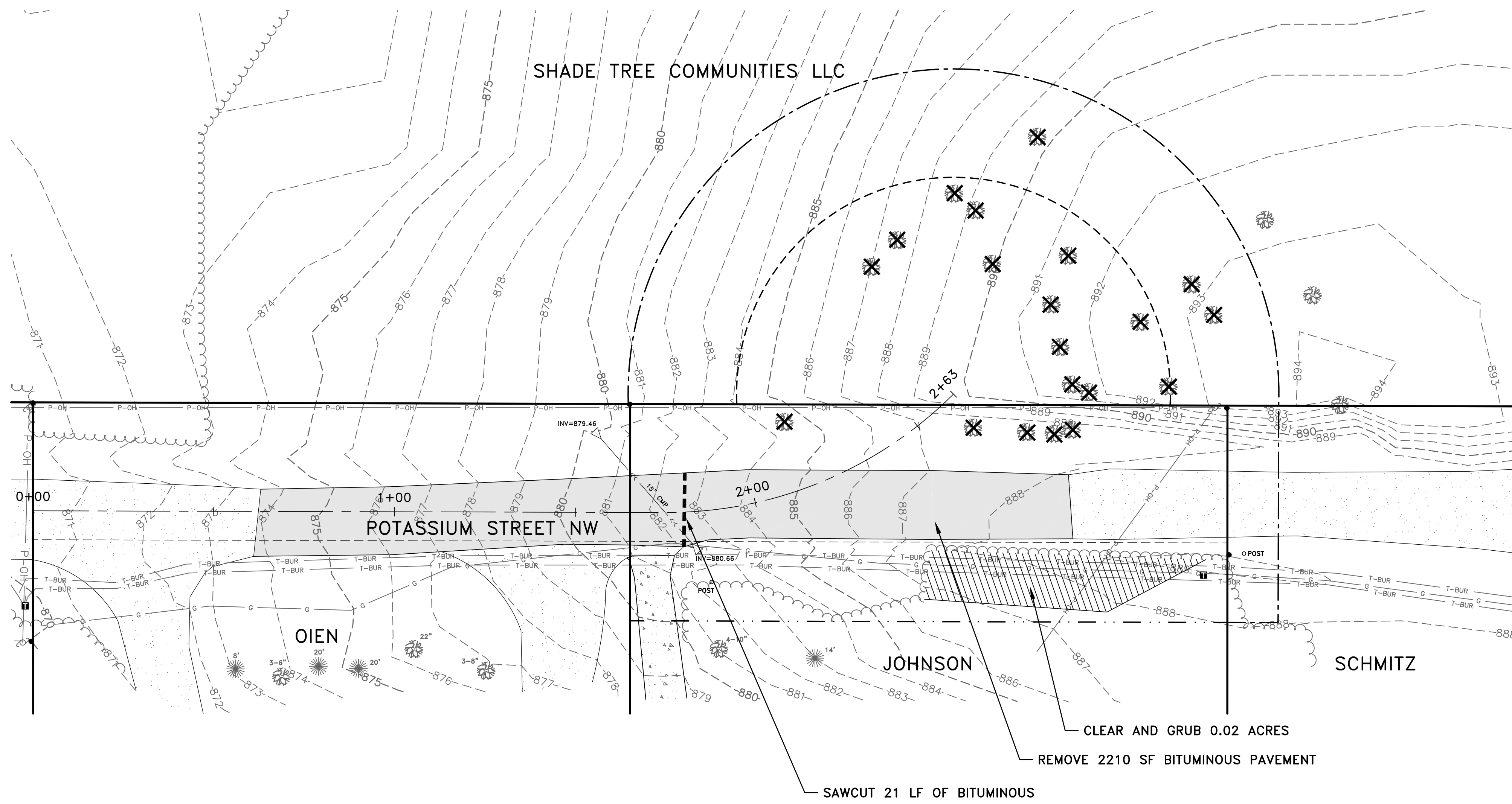


**Hakanson Anderson**  
Civil Engineers and Land Surveyors  
3601 Thurston Ave., Anoka, Minnesota 55303  
763-427-5860 FAX 763-427-0520  
www.hakanson-anderson.com

IMPROVEMENT PROJECT #17-13  
POTASSIUM STREET CUL-DE-SAC

DETAILS  
CITY OF RAMSEY, MINNESOTA

SHEET  
3  
OF  
7  
SHEETS



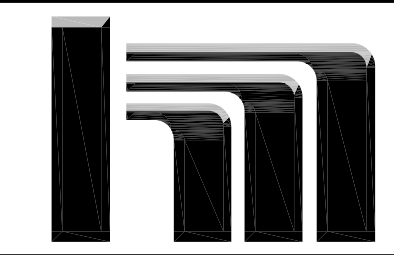
- LEGEND**
- = EDGE OF WOODS
  - = DENOTES OVERHEAD ELECTRIC LINE
  - = DENOTES UNDERGROUND TELEPHONE LINE
  - = DENOTES GAS LINE
  - = UTILITY POLE
  - = TELEPHONE PEDESTAL
  - = CONIFEROUS TREE (SPREAD)
  - = DECIDUOUS TREE (DIAMETER)
  - = DENOTES CONCRETE SURFACE
  - = DENOTES BITUMINOUS SURFACE
  - = DENOTES GRAVEL SURFACE
  - = EXISTING CONTOUR
  - = PROPOSED CONTOUR
  - = CLEARING & GRUBBING
  - = CLEARING & GRUBBING
  - = SAW CUT BITUMINOUS OR CONCRETE PAVEMENT
  - = PROPOSED PERMANENT ROADWAY EASEMENT
  - = PROPOSED TEMPORARY ROADWAY EASEMENT
  - = PROPOSED TEMPORARY GRADING EASEMENT
  - = PROPERTY CORNER

| DATE    | REVISION               |
|---------|------------------------|
| 6/28/17 | CITY COMMENTS          |
| 8/4/17  | CITY COMMENTS          |
| 9/28/17 | SHIFT CUL-DE-SAC SOUTH |

I hereby certify that this plan, specification, or report was prepared by me or under my direct supervision and that I am a duly licensed Professional Engineer under the laws of the State of Minnesota.

*Shane M. Nelson*  
**SHANE M. NELSON, P.E.**  
 Date 6-23-17 Lic. No. 43381

DESIGNED BY: SMN  
 DRAWN BY: MSS  
 CHECKED BY: SMN



**Hakanson Anderson**  
 Civil Engineers and Land Surveyors  
 3601 Thurston Ave., Anoka, Minnesota 55303  
 763-427-5860 FAX 763-427-0520  
 www.hakanson-anderson.com

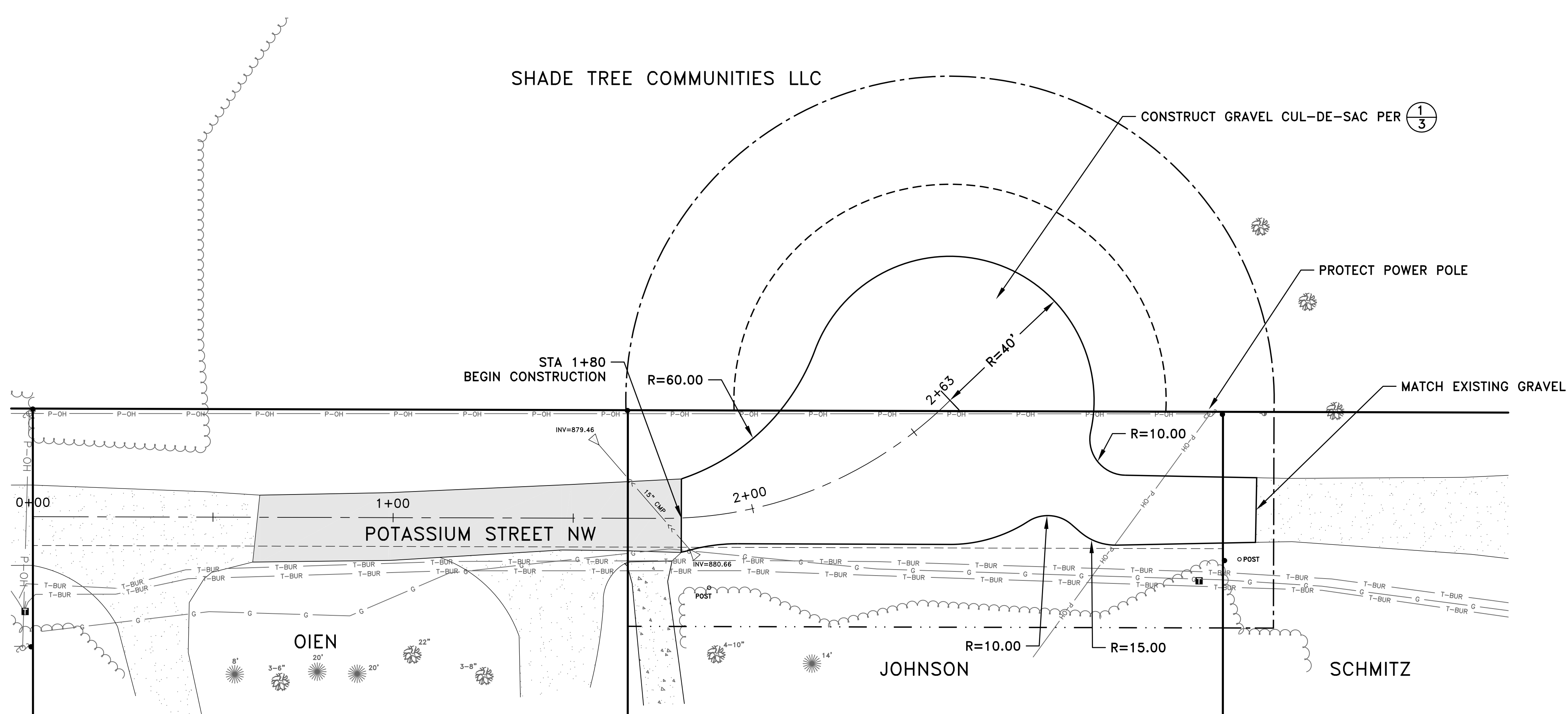
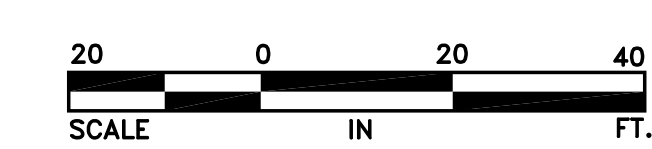
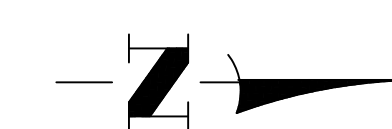
IMPROVEMENT PROJECT #17-13  
 POTASSIUM STREET CUL-DE-SAC

REMOVALS PLAN  
 CITY OF RAMSEY, MINNESOTA

SHEET 4 OF 7 SHEETS  
 RA3186

SHADE TREE COMMUNITIES LLC

CONSTRUCT GRAVEL CUL-DE-SAC PER  $\frac{1}{3}$



- LEGEND**
- = EDGE OF WOODS
  - = DENOTES OVERHEAD ELECTRIC LINE
  - = DENOTES UNDERGROUND TELEPHONE LINE
  - = DENOTES GAS LINE
  - = UTILITY POLE
  - = TELEPHONE PEDESTAL
  - = CONIFEROUS TREE (SPREAD)
  - = DECIDUOUS TREE (DIAMETER)
  - = DENOTES CONCRETE SURFACE
  - = DENOTES BITUMINOUS SURFACE
  - = DENOTES GRAVEL SURFACE
  - = EXISTING CONTOUR
  - = PROPOSED CONTOUR
  - = PROPOSED PERMANENT ROADWAY EASEMENT
  - = PROPOSED TEMPORARY ROADWAY EASEMENT
  - = PROPOSED TEMPORARY GRADING EASEMENT
  - = PROPERTY CORNER

| DATE    | REVISION               |
|---------|------------------------|
| 6/28/17 | CITY COMMENTS          |
| 8/4/17  | CITY COMMENTS          |
| 9/28/17 | SHIFT CUL-DE-SAC SOUTH |
|         |                        |
|         |                        |

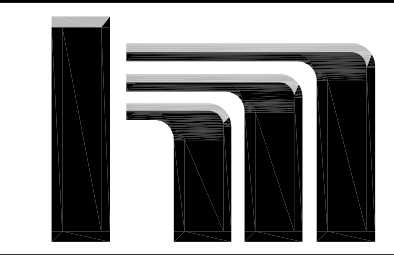
I hereby certify that this plan, specification, or report was prepared by me or under my direct supervision and that I am a duly licensed Professional Engineer under the laws of the State of Minnesota.

*Shane M. Nelson*  
**SHANE M. NELSON, P.E.**  
 Lic. No. 43381

DESIGNED BY:  
SMN

DRAWN BY:  
MSS

CHECKED BY:  
SMN

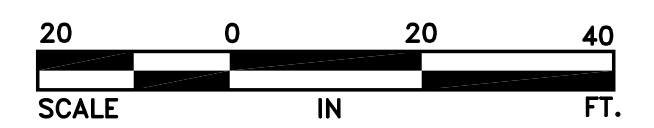
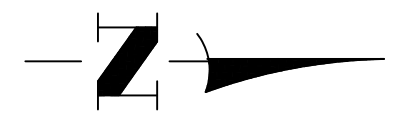
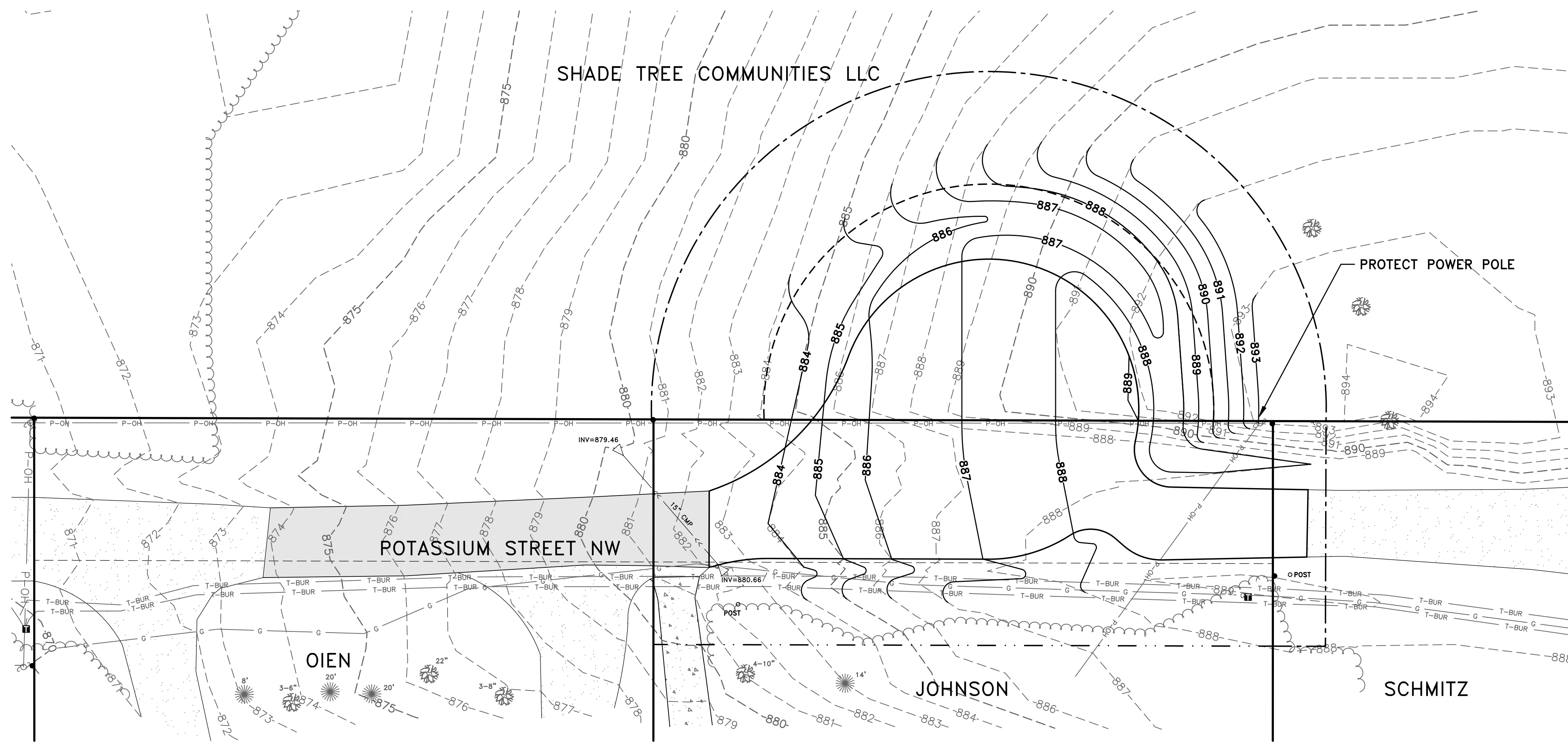


**Hakanson Anderson**  
 Civil Engineers and Land Surveyors  
 3601 Thurston Ave., Anoka, Minnesota 55303  
 763-427-5860 FAX 763-427-0520  
 www.hakanson-anderson.com

IMPROVEMENT PROJECT #17-13  
 POTASSIUM STREET CUL-DE-SAC

CONSTRUCTION PLAN  
 CITY OF RAMSEY, MINNESOTA

SHEET 5 OF 7 SHEETS  
 RA3186



- LEGEND**
- = EDGE OF WOODS
  - = DENOTES OVERHEAD ELECTRIC LINE
  - = DENOTES UNDERGROUND TELEPHONE LINE
  - = DENOTES GAS LINE
  - = UTILITY POLE
  - = TELEPHONE PEDESTAL
  - = CONIFEROUS TREE (SPREAD)
  - = DECIDUOUS TREE (DIAMETER)
  - = DENOTES CONCRETE SURFACE
  - = DENOTES BITUMINOUS SURFACE
  - = DENOTES GRAVEL SURFACE
  - = EXISTING CONTOUR
  - = PROPOSED CONTOUR
  - = PROPOSED PERMANENT ROADWAY EASEMENT
  - = PROPOSED TEMPORARY ROADWAY EASEMENT
  - = PROPOSED TEMPORARY GRADING EASEMENT
  - = PROPERTY CORNER

| DATE    | REVISION               |
|---------|------------------------|
| 6/28/17 | CITY COMMENTS          |
| 8/4/17  | CITY COMMENTS          |
| 9/28/17 | SHIFT CUL-DE-SAC SOUTH |
|         |                        |
|         |                        |

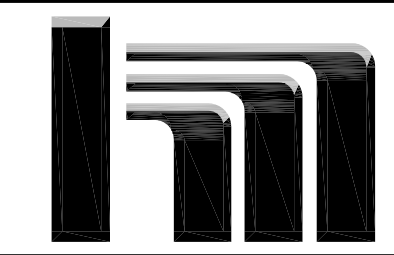
I hereby certify that this plan, specification, or report was prepared by me or under my direct supervision and that I am a duly licensed Professional Engineer under the laws of the State of Minnesota.

*Shane M. Nelson*  
**SHANE M. NELSON, P.E.**  
 Date 6-23-17 Lic. No. 43381

DESIGNED BY:  
SMN

DRAWN BY:  
MSS

CHECKED BY:  
SMN

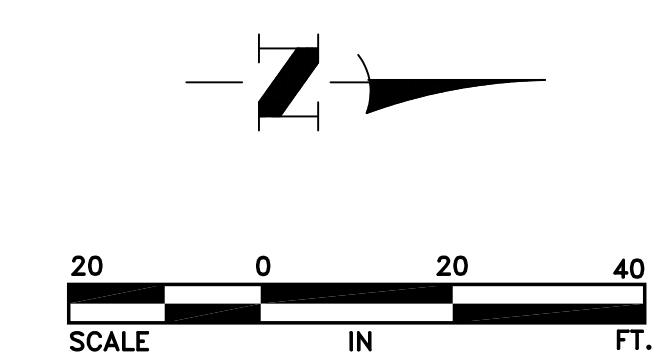
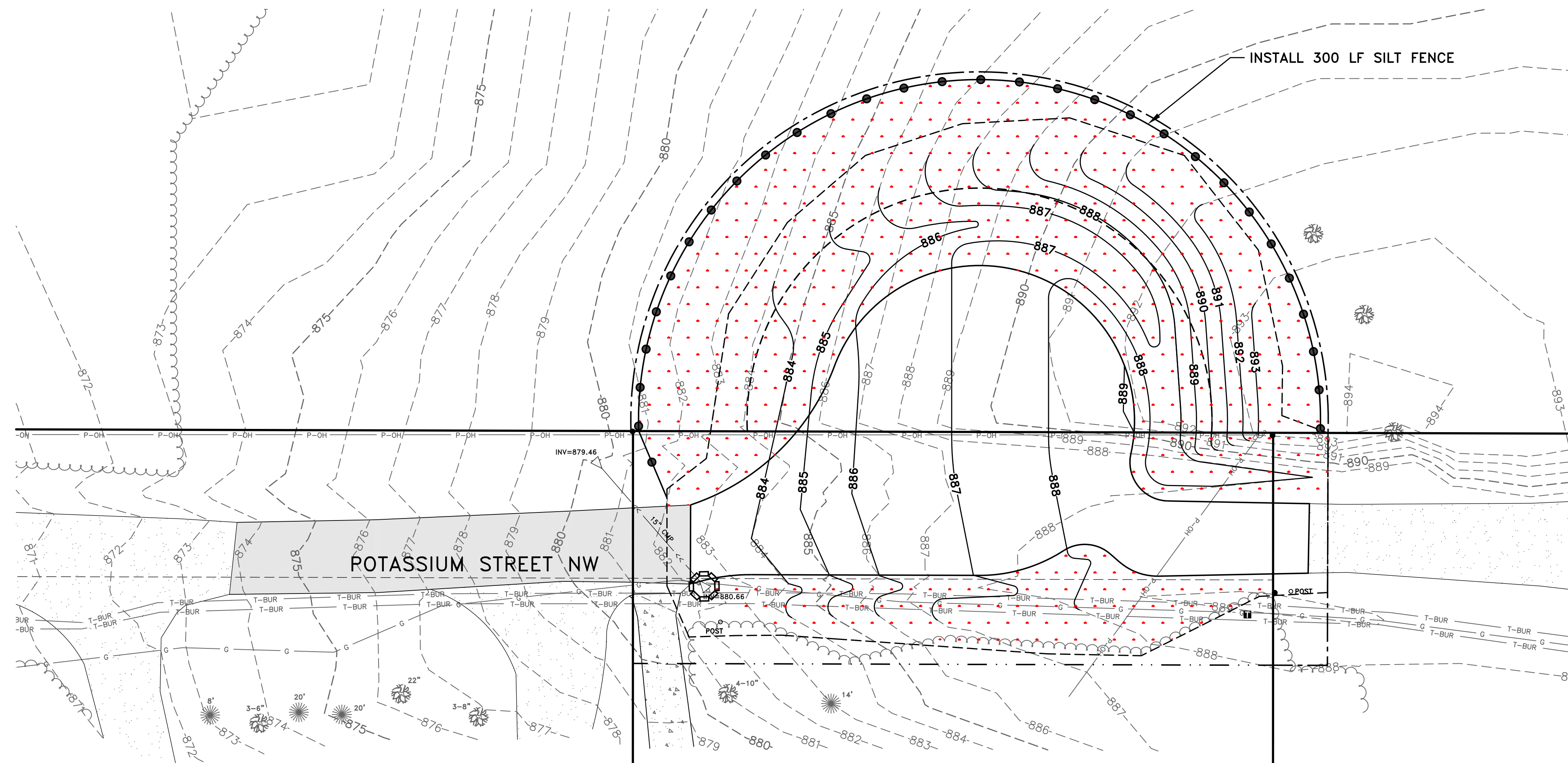


**Hakanson Anderson**  
 Civil Engineers and Land Surveyors  
 3601 Thurston Ave., Anoka, Minnesota 55303  
 763-427-5860 FAX 763-427-0520  
 www.hakanson-anderson.com

IMPROVEMENT PROJECT #17-13  
**POTASSIUM STREET CUL-DE-SAC**

**GRADING PLAN**  
 CITY OF RAMSEY, MINNESOTA

SHEET  
6  
OF  
7  
SHEETS



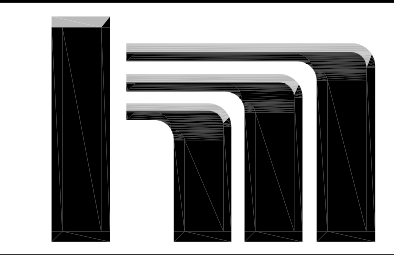
- LEGEND**
- = EDGE OF WOODS
  - = DENOTES OVERHEAD ELECTRIC LINE
  - = DENOTES UNDERGROUND TELEPHONE LINE
  - = DENOTES GAS LINE
  - = UTILITY POLE
  - = TELEPHONE PEDESTAL
  - = CONIFEROUS TREE (SPREAD)
  - = DECIDUOUS TREE (DIAMETER)
  - = DENOTES CONCRETE SURFACE
  - = DENOTES BITUMINOUS SURFACE
  - = DENOTES GRAVEL SURFACE
  - = EXISTING CONTOUR
  - = PROPOSED CONTOUR
  - = PROPOSED PERMANENT ROADWAY EASEMENT
  - = PROPOSED TEMPORARY ROADWAY EASEMENT
  - = PROPOSED TEMPORARY GRADING EASEMENT
  - = PROPERTY CORNER
  - = SILT FENCE
  - = MNDOT SEED MIX 25-141 AND HYDRAULIC SOIL STABILIZER TYPE BONDED FIBER MATRIX (BFM)
  - = CONSTRUCTION LIMITS
  - = INLET PROTECTION

| DATE    | REVISION               |
|---------|------------------------|
| 6/28/17 | CITY COMMENTS          |
| 8/4/17  | CITY COMMENTS          |
| 9/28/17 | SHIFT CUL-DE-SAC SOUTH |
|         |                        |
|         |                        |

I hereby certify that this plan, specification, or report was prepared by me or under my direct supervision and that I am a duly licensed Professional Engineer under the laws of the State of Minnesota.

*Shane M. Nelson*  
**SHANE M. NELSON, P.E.**  
 Lic. No. 43381

DESIGNED BY: SMN  
 DRAWN BY: MSS  
 CHECKED BY: SMN



**Hakanson Anderson**  
 Civil Engineers and Land Surveyors  
 3601 Thurston Ave., Anoka, Minnesota 55303  
 763-427-5860 FAX 763-427-0520  
 www.hakanson-anderson.com

IMPROVEMENT PROJECT #17-13  
**POTASSIUM STREET CUL-DE-SAC**

**EROSION AND SEDIMENT CONTROL PLAN**  
 CITY OF RAMSEY, MINNESOTA

SHEET 7 OF 7 SHEETS  
 RA3186