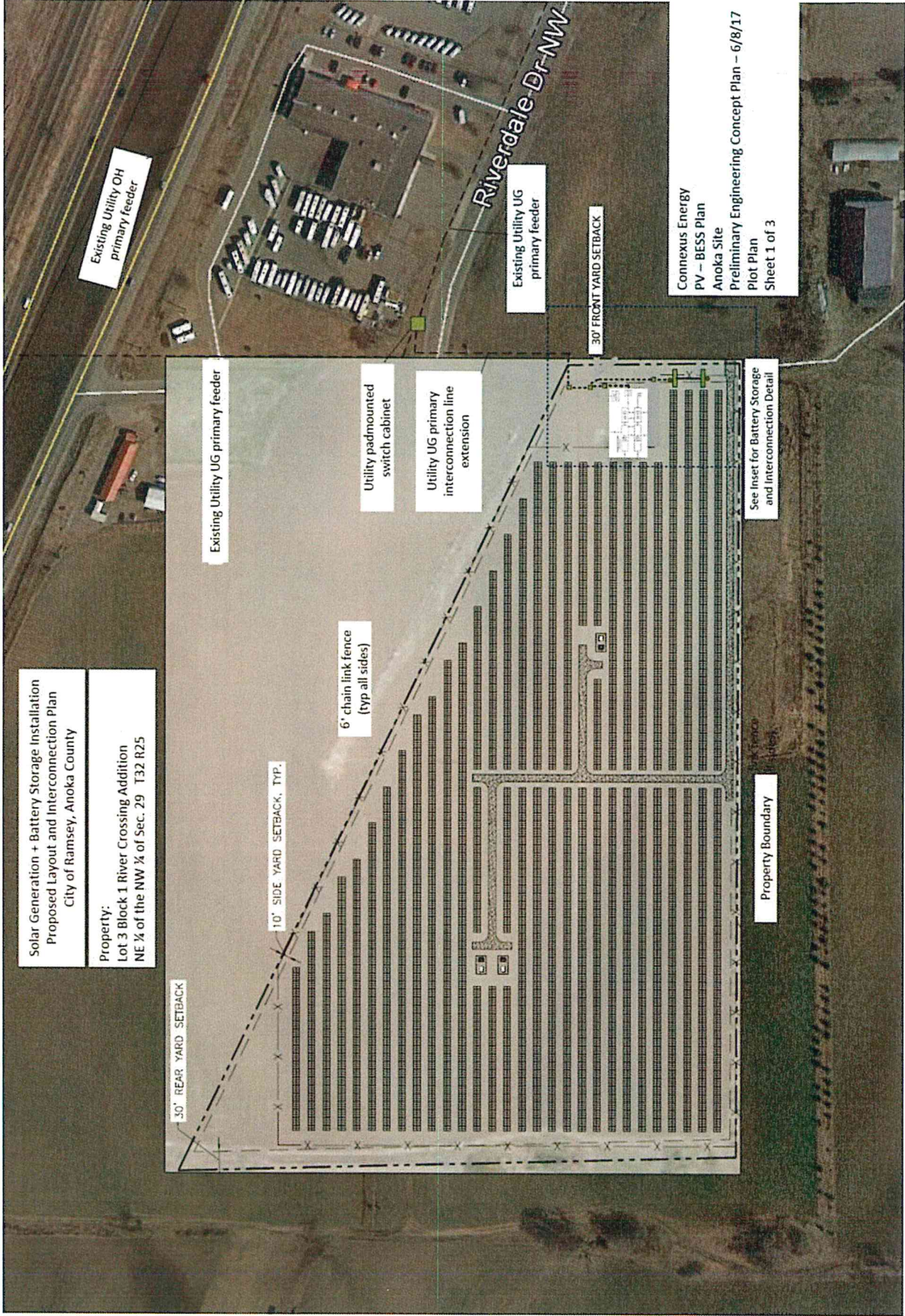


Solar Generation + Battery Storage Installation  
Proposed Layout and Interconnection Plan  
City of Ramsey, Anoka County

Property:

Lot 3 Block 1 River Crossing Addition  
NE ¼ of the NW ¼ of Sec. 29 T32 R25

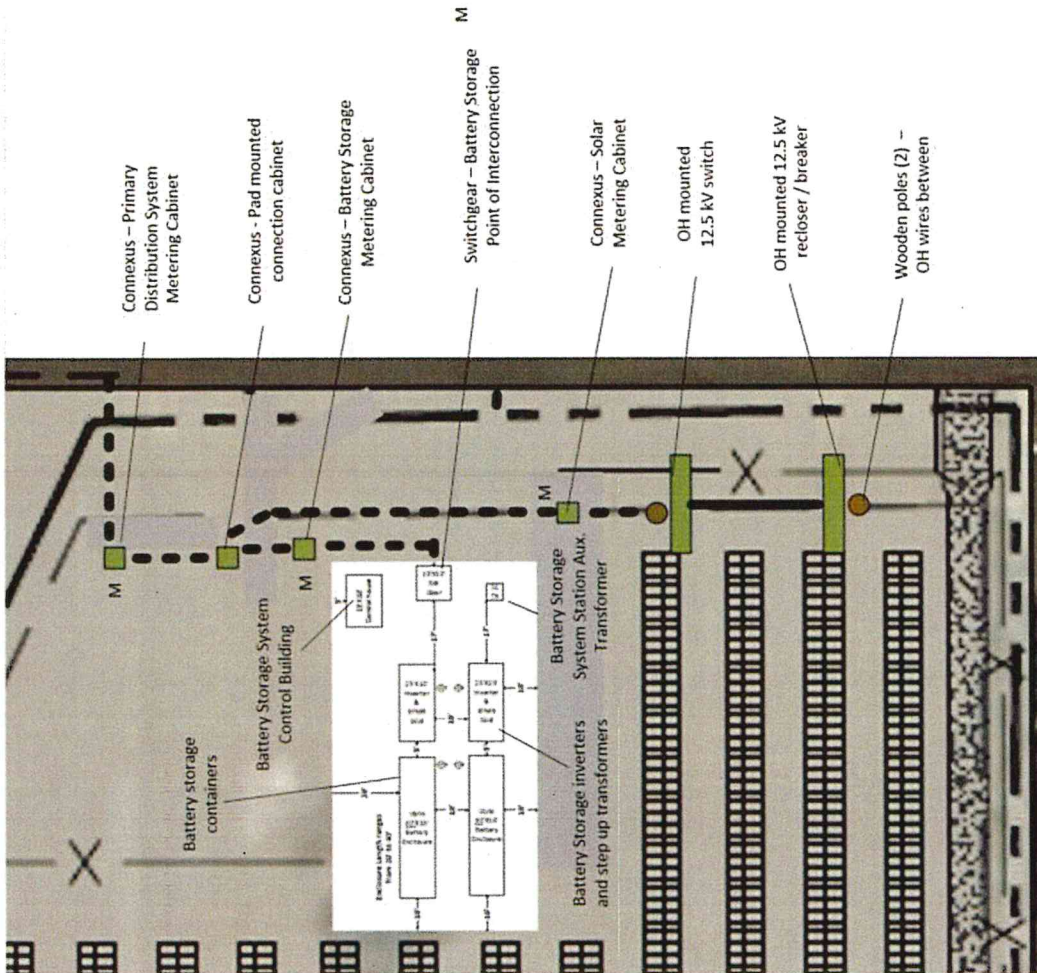


Connexus Energy  
PV - BESS Plan  
Anoka Site  
Preliminary Engineering Concept Plan - 6/8/17  
Plot Plan  
Sheet 1 of 3

Property Boundary

**GENERAL NOTES:**

- Layout as shown is preliminary – actual detailed layout of panel array and placement of interconnection equipment may change as part of detail design.
- Solar panels will be pier mounted fixed access, azimuth at 180 degrees.
- Solar panel maximum height - 15' (based on preliminary information – not vendor specific)
- All setbacks to solar panels shall located such that the distance to any property line is at least equal to the height of the solar panels at maximum designed tilt.
- All electrical collection lines inside the property shall be underground, except for overhead pole mounted equipment near the point of interconnection as indicated.
- Solar field will be surrounded by 6' chain lockable chain link fence
- Power line extension to interconnect the facility will be buried line along Ulama St
- Connexus Connection Cabinet and Metering Cabinet approximate dimensions:  
5' x 5' footprint, 5' high



Inset from Page 1 – Battery Storage and Interconnection Equipment



Solar Panels – Typical view



Battery containers – Typical view