

**2040 COMPREHENSIVE PLAN UPDATE
STEERING COMMITTEE WORKSHOP ONE
Monday, February 27, 2017**

TOPIC IDENTIFICATION

Interested in the future of Ramsey	IIIIIIIIIIIIIIIIII
Rural Character	IIIIIIII
Community Center/Youth Athletics	IIIIII
Highways and Roads	IIIIII
Parks (dog park, small neighborhood parks)	IIIIII
Schools	IIIIII
Natural Resources/Climate Resilience	IIII
The COR	IIII
Housing issues	II
Destinations	I
Forward Thinking	I
Is this a plan for Agenda21?	I
Goals in the 2020 Comprehensive Plan never materialized	I
Rum River Hills Golf Course Redevelopment	I
Our parcel shrunk without our permission	I
Civic engagement	I
Shops and retail	I
National Self Storage compatibility	I
Harvest Estates	I
Property rights	I
Property pride – standards for code enforcement	I

RURAL CHARACTER

- Maintain open areas
- Keep property taxes low for multi acre property owners – towns don't have to be all high density
- Keep well and septic available to low density areas
- Natural buffers (visual) – transitions from density areas
- Don't add street lights
 - Shrouds for existing lights
- Maintain area for local source farms

- Communities need to provide more for themselves
- Provide tax breaks
- Biology and Nature workshops
 - Bioblitz
- Shade tree education and protection
- Education and incentives for gardening and micro farming
 - Local food producers
- Promote land use for livestock – small scale
- Maintain natural corridors for wildlife movement
- Keep and develop wildlife areas
- Timed lights in community areas
- Non-GMO zones

PARKS

- Repair – i.e. boardwalks at Itasca Park
- Plant more shrubs and native grass
- No spray on plantings
- Add public art – parks and COR
- Community flower beds/parks
- Recreation Center
- Windbreak at dog park
- Playgrounds within neighborhoods, not just by parks
- Embrace the rivers – as an asset – use as a source of tourism
- Finish Central Park – lights, parking, state tourney
- More canoe rentals

TRANSPORTATION AND ROADS

- Centralize business area around COR versus sprawl
- Safe, pedestrian /bicycling friendly existing roads
- Slow down speed limits in residential areas – 40 max
 - Varlolite Street
 - Green Valley Road (63)
- Highway 10 Congestion (Park & Rides?) - Light rail is great
- Highway 10 stoplights by Quik Trip and Sunfish Lake Blvd – why?
 - Please put an overpass in – my journey takes 10-20 minutes longer
- Sustainability versus growth

SCHOOLS

- Ramsey Middle School(s)

- Ramsey High School
- Modular – make expandable – future proof
- Multi-Use
- Activities keep families in the area

MISCELLANEOUS COMMENTS

- Would like to see plans for another senior building in the area
- We need more public awareness/teaching of the laws concerning bike trails that cross streets. Both kids and adults ride right across the streets without looking assuming the driver will stop. I read on MN Law that they only have right of way if they get off their bike and walk it across as then they are considered a pedestrian in a crosswalk. Drivers need to know which is correct also. Public info would be appreciated. Thanks.
- Please leave Rivlyn Avenue as a residential street. Do not bow to pressure from Lano, Dahlheimer, etc., to make it a frontage road. Please keep it residential! Thanks
- Stop sign at Iodine and 144th – daycares on corner – speeding cars

Tim Gladhill

From: Graffunder <graffunder56@comcast.net>
Sent: Monday, February 27, 2017 9:11 AM
To: Ramsey Planning
Subject: Input

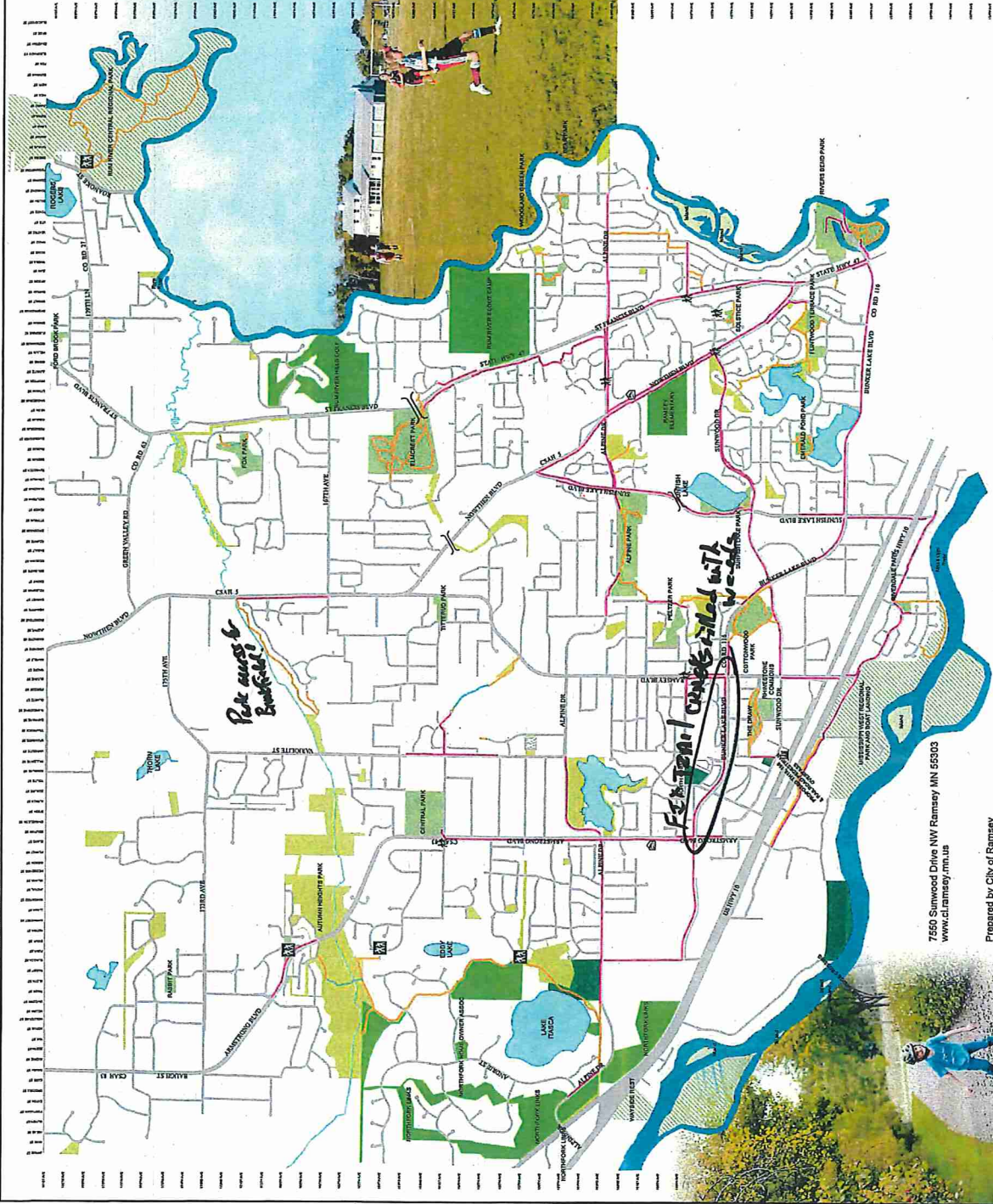
Good morning,

I am not able to attend the planning session that is scheduled for tonight but I would like to offer this input. What I would most like to see in Ramsey is some kind of community center/athletic facility like a Lifetime Fitness or YMCA that includes an indoor pool. Pools are expensive but they also offer recreational and exercise opportunities for many citizens. Perhaps there could be cooperative use by schools also.

Thank you,

Ann-Marie Graffunder
Ramsey resident

City of Ramsey 2016 Park and Trail User Map



Legend

Park Map Symbols

- Underpass
- Proposed Underpass
- Crosswalk
- Existing Trailhead
- Fire Station
- City Hall
- Proposed Trailhead

TYPE

- OFF-ROAD (OUT OF ROW)
- BOARDWALKS
- ON-ROAD (WITHIN ROW)
- Right of Way (ROW)

Park and Open Space

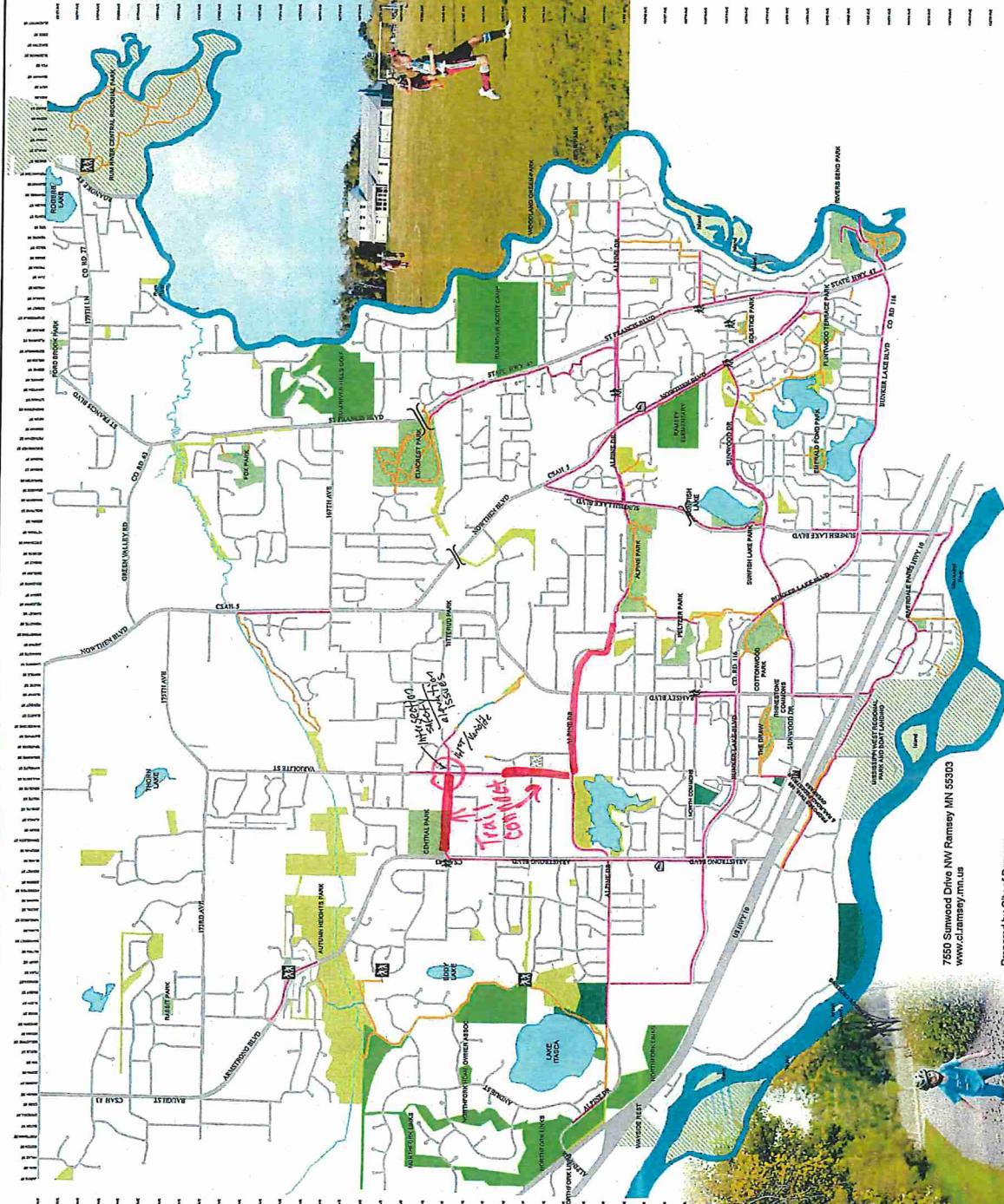
- PARKS
- QUASH-PUBLIC
- REGIONAL
- PROPOSED PARK
- OPEN SPACE/TRAIL CORRIDOR

7550 Sunwood Drive NW Ramsey MN 55303
www.ci.ramsey.mn.us

Prepared by City of Ramsey
 Revised September 2016

0 0.5 1 Miles

City of Ramsey 2016 Park and Trail User Map



Legend

Park Map Symbols

- Underpass
- Proposed Underpass
- Crosswalk
- Existing Trailhead
- Fire Station
- City Hall
- Proposed Trailhead

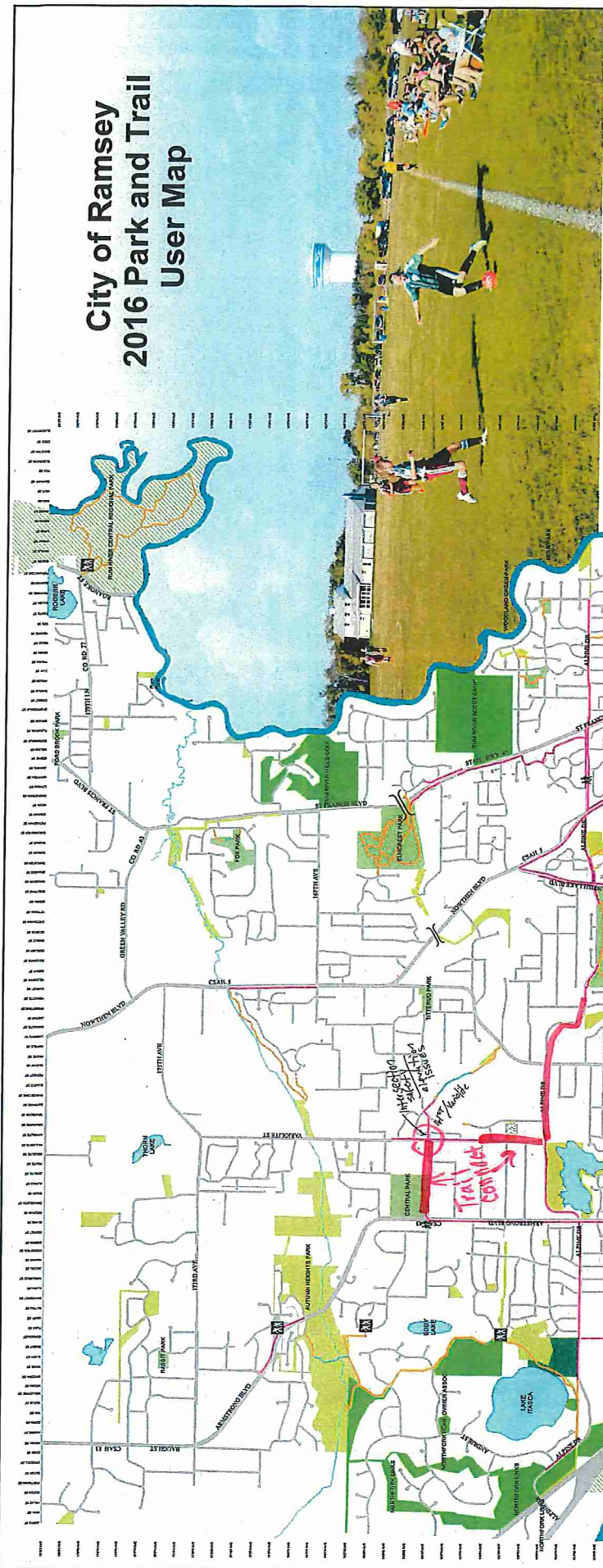
TYPE

- OFF-ROAD (OUT OF ROW)
- BOARDWALKS
- ON-ROAD (WITHIN ROW)
- Right of Way (ROW)
- Park and Open Space
- PARKS
- QUASI-PUBLIC
- REGIONAL
- PROPOSED PARK
- OPEN SPACE/TRAIL CORRIDOR

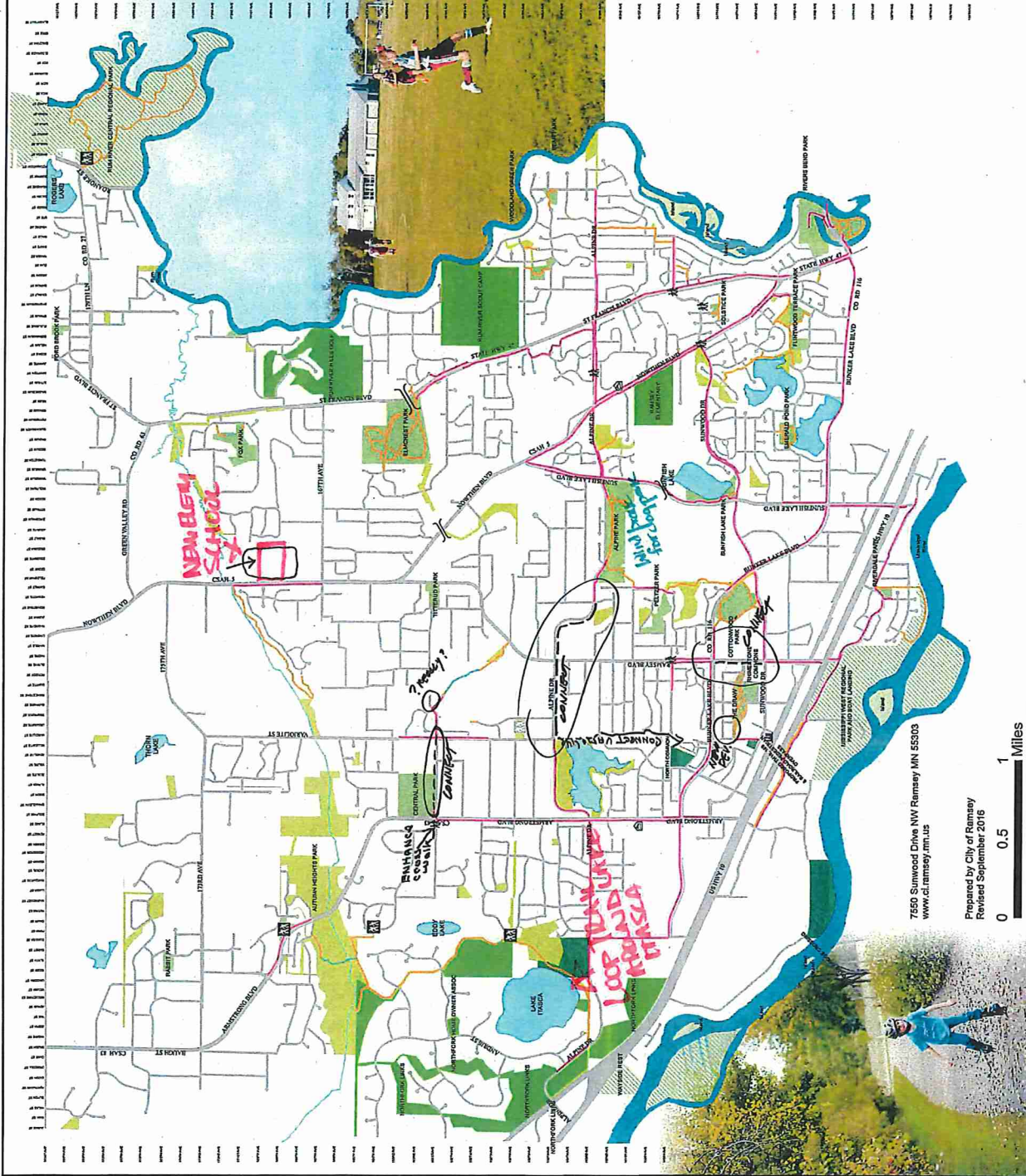
7550 Sunwood Drive NW Ramsey MN 55303
www.ci.ramsey.mn.us

Prepared by City of Ramsey
Revised September 2016

0 0.5 1 Miles



City of Ramsey 2016 Park and Trail User Map



Legend

- Park Map Symbols**
- Underpass
 - Proposed Underpass
 - Crosswalk
 - Existing Trailhead
 - Fire Station
 - City Hall
 - Proposed Trailhead
- TYPE**
- OFF-ROAD (OUT OF ROW)
 - BOARDWALKS
 - ON-ROAD (WITHIN ROW)
 - Right of Way (ROW)
- Park and Open Space**
- PARKS
 - QUASI-PUBLIC REGIONAL
 - PROPOSED PARK
 - OPEN SPACE/TRAIL CORRIDOR

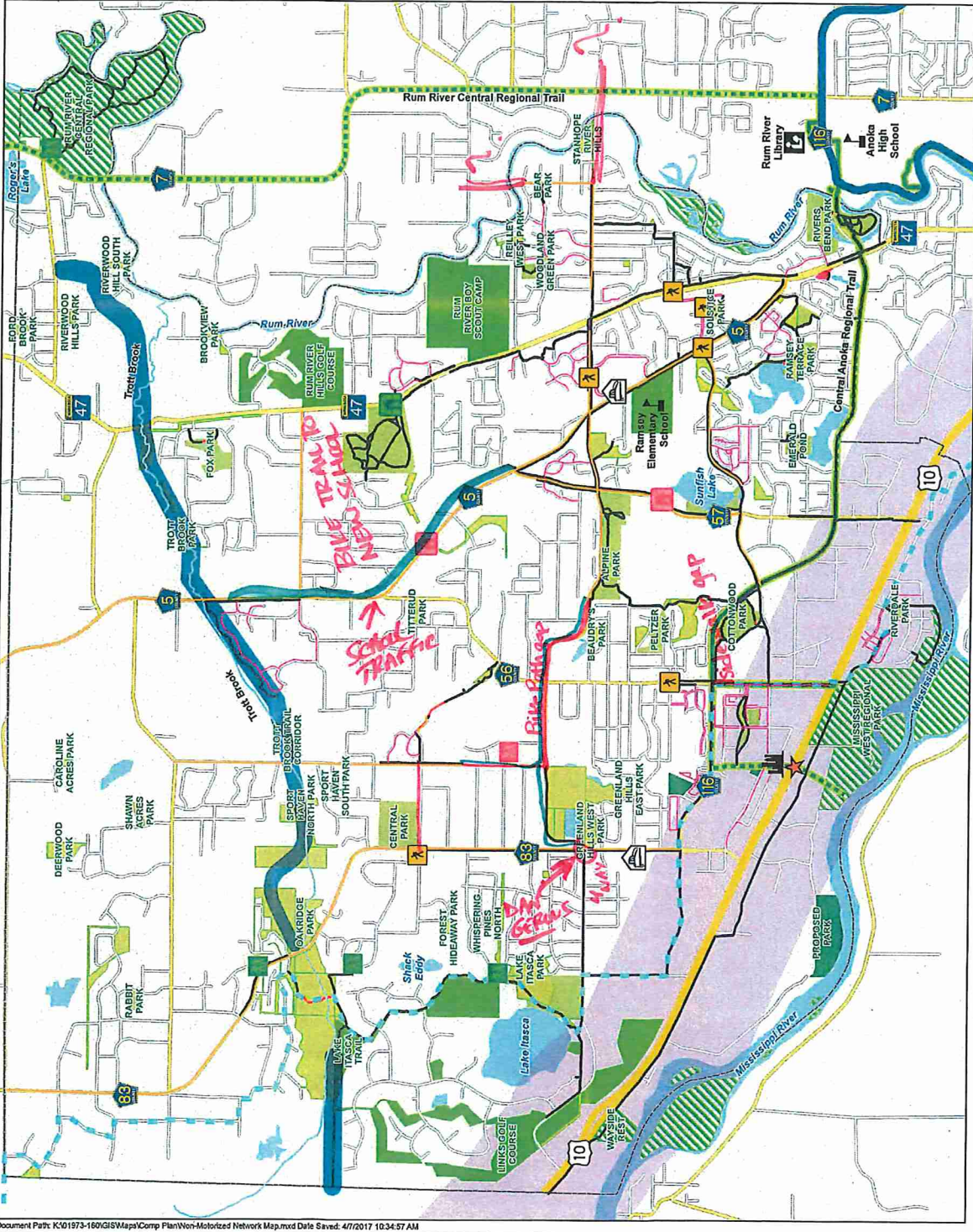
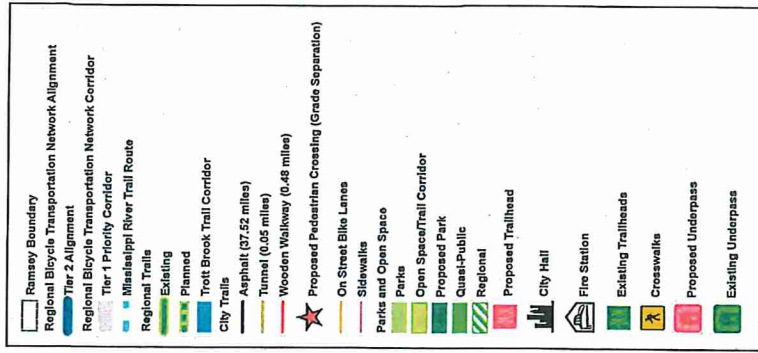
7500 Sunwood Drive NW Ramsey MN 55303
www.ci.ramsey.mn.us

Prepared by City of Ramsey
Revised September 2016





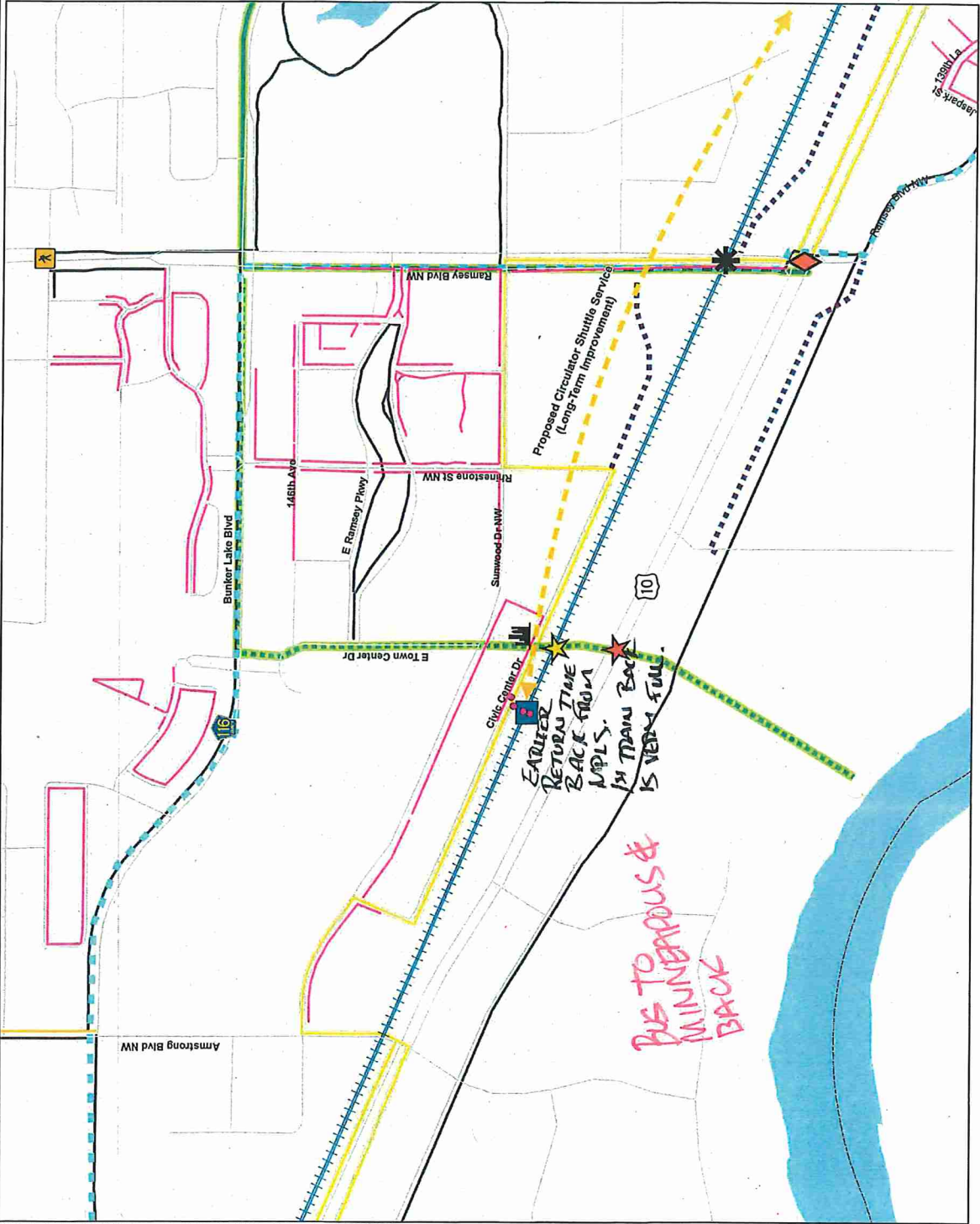
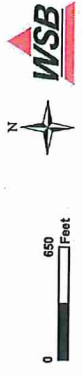
Ramsey Comprehensive Plan Non-Motorized Transportation Network Ramsey, MN





COR Multimodal Transportation Map Ramsey, MN

- Ramsey Boundary
- Proposed Frontage Road
- Proposed Interchange
- Proposed Railroad Grade Separation
- Northstar Commuter Rail
- Northstar Station
- Northstar Link (Fridays Only)
- Northstar Link Bus Stop
- Regional Trails
 - Existing
 - Planned
- Mississippi River Trail Route
- City Trails
- Asphalt
- Existing Pedestrian Overpass
- Proposed Pedestrian Overpass
- On Street Bike Lanes
- Sidewalks
- City Hall
- Crosswalks



EARLIER RETURN TIME BACK FROM MPLS. BY TRAIN BACK IS VERY FULL.

BUS TO MINNEAPOLIS & BACK

2040 Comprehensive Plan Update

Steering Committee Workshop 2 Comments

- Lots of animals killed on Hwy 63 (Green Valley Road) between 47 and Nowthen. Not safe for pedestrians, mail delivery, mail pickup, bicyclists
- MN Youth Soccer Association grants for facilities/improvements
- Small children designated toddler play area – closest to me – Otsego maybe
- Deficient in available field sports facilities – soccer for example
- Adrenalin Soccer? – organization interested in Ramsey (Highway & Ramsey Blvd.) – private?
- Potential for widening Hwy 10 to 3 lanes?
 - Wouldn't that result in noise study and possible noise wall and additional dollars to project?
- Safer crossing at 161st & Variolite and pedestrian friendly improvements on 161st (sidewalk)
- St. Katherine Drexel not opposed to paved trail across their property
- Green Valley Road – speeds too high, no shoulders, improve safety
- Have targeted efforts been made to enforce speed limits in problem areas
- Concern about running stop signs at 150th and Willemite
- Need another east/west connection between Green Valley Road and Alpine
- Hwy 47 more and more congested are we working with Anoka to improve this?
- General support for crossing over river
- Concerns with use of shredded tires/rubber as chips in playgrounds
- Big community center, swimming pool
- Need a building for indoor facility for active opportunities during winter months
- Need to maintain balance of urban/rural
- Support for community parks and connected by trails
- Need to make sure each community park serves all users, including those with disabilities
- Likes community parks because they serve a broad demographic
- Go big – community center to boast about (or aquatics)
- Indoor facility (winter use)
- Like notion of recreation districts (blocks of neighborhoods) – connected by trails – versus lots of little parks
- St. Katherine Drexel open to allow trail east of Central Park
- Trail along Green Valley Road, or signs/shoulder
- Speeding – are there ways to be proactive?
- 150th & Willemite – failure to stop
- Highway 47 congestion – how do we work productively work with Anoka
- Looking for one-level townhome – but with separation between units
- Community Center
 - Pool

- Gym
- Sauna/hot tub
- Meeting rooms
- With parking ramp
- Partner with private sector
- Moved to Ramsey for adjacency to Center Park – need crosswalk at 161st and Variolite Street
- Splash pad

STEERING COMMITTEE WORKSHOP

October 26, 2017

COMMENTS

- The walking Path on Nowthen Blvd. has become dangerous because of the new turnout lane (164th Lane & Nowthen Blvd.). I am concerned about increased traffic on Nowthen Blvd.
- Stopped using Itasca Trail when boarding began to experience damage and not replaced. Opposed to bridge over Mississippi River. Align Armstrong Blvd. because it has been established and should stay as planned, connection from Dayton would not align with any feeder roads. Need to stop destroying existing wetlands by putting roads through them when they are not replaced as promised. Keep rural and non “cookie-cutter” personality. Plant trees instead of bulldozing them.
- Ramsey Market crosswalk could really use flashers to alert vehicles.
- I think you need to look hard at some way to alleviate the bottleneck at Highway 47 and Bunker. I know you talked some about it but with more housing and more people it will only get worse and less safe. Also a problem for emergency vehicles.
- Thanks for the opportunity for input – continue to value natural resource preservation, plan for wildlife (deer herd mgmt.), and consider motorized recreational planning, trail connectivity.
- Need more meetings like this – good job.
- Very informative – I like my rural location and am glad effort is being made to preserve it. A community center would be nice and maybe in conjunction with a YMCA or other could help fund.
- Respect and maintain balance between urban, rural and natural environment. Please consider the high T intersection design for Hwy 10 and Ramsey Blvd., etc. Community Center! See Maple Grove for reference – indoor playground, pool.
- Well done meeting – Private wells/septic systems – what happens if the wells “go bad” or many septic systems fail in a neighborhood? Are the canoes at Sunfish Park ever used? Trails along Sunfish Blvd – there is a trail from 143rd Lane south on east side of Sunfish and another trail at Sunfish Lake Park – none between 143rd Lane & the Park – not very safe walking on Sunfish. Any chance of a connecting trail there?

- Do not approve the Rum River Prairie development! Large undeveloped natural spaces are what makes this city great and why I moved here. We do not need more homes and traffic; we need more preserved wildlife habitat.
- We need the Mississippi Skyway overpass!
- Maintain the rural character. Everything does not need to be developed, to benefit the residents.
- I would love to see a turn lane on Bunker heading west going north onto 47.
- I appreciate opening these meetings to the residents! Thank you.
- Thank you for all the great work your committees are doing for Ramsey. I appreciate the meetings to keep us informed. Keep up the good work!
- Thank you for the meeting. With all planning responsible stewards of taxpayers monies is key!
- Continue run/bike trail north of Center Park on Armstrong.
- Would really like to see Target, Home Depot, Cub Foods, and Lund's.
- Highway 47/169 thru Anoka is a major traffic tie-up. Maybe straighten 47 around the fairgrounds would help. Do not use 156 for a Rum River crossing – use Alpine or 167th.
- Stabilization of riverbank: If it costs \$20k, could property value be reduced by equipment amount?
- Future housing with rural character lacking in comments thus far.
- Expand more on what may happen with Highway 47.
- How will right of way be acquired (\$)?
- Does City promote re-use of existing vacant buildings? Could materials be re-used?

STAFF NOTES FROM LARGE GROUP DISCUSSION

- What is the plan for Schools?
- What is the plan for the Closed Landfill
- What more can be done to repair Shoreline Erosion (Can Valuation be adjusted due to loss of area?)
- Occupancy (Vacant)
- Excess Right of Way
- Need to fix Highway 47
- Need more Class A office Space
- Invest in Existing Parks
- Is there an adequate Water Supply for future plans?
- Question on proposed Adrenaline Sports Center
- Future Rural Character
 - Need more policies on this in the Housing Plans