

REPORT

Functional Assessment of Wetlands

City of Ramsey

February 12, 2007

Submitted to:

City of Ramsey
Attn: Chris Anderson
Environmental Coordinator
7550 Sunwood Drive NW
Ramsey, MN 55303
Phone: 763-433-9905
Email: CAnderson@ci.ramsey.mn.us

Submitted by:

Westwood Professional Services, Inc.
Attn: Allison Kampbell and Ron Peterson
7699 Anagram Drive
Eden Prairie, MN 55344
Phone: 952-937-5150
Fax: 952-937-5822
Email: allison.kampbell@westwoodps.com
Email: ron.peterson@westwoodps.com
Project No. 20061015.00

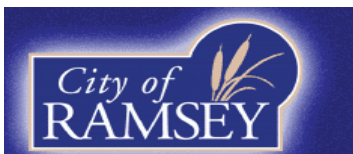


TABLE OF CONTENTS

1. SUMMARY 1

2. INTRODUCTION 1

 2.1 Project History 1

 2.2 Study Area Description..... 2

3. MNRAM 3.0 FUNCTIONAL ASSESSMENT METHODOLOGY 2

4. WETLAND MANAGEMENT CLASSIFICATION SCHEMA..... 4

5. PRELIMINARY GIS WETLAND MANAGEMENT CLASSIFICATION..... 7

 5.1 Special Concerns..... 8

6. WETLAND FIELD ASSESSMENT METHODOLOGY 9

 6.1 Field Assessment Mapping 9

 6.2 Field Assessment Procedures..... 10

 6.3 Field Data Entry into MnRAM 3.0 Access Database 10

7. WETLAND FIELD ASSESSMENT RESULTS..... 11

 7.1 Function and Value Assessment 11

8. WETLAND MANAGEMENT CLASSIFICATION RESULTS 12

9. CONCLUSION..... 13

TABLES

Table 1 Summary of Preliminary Wetland Management Classifications..... 14

Table 2 Number, Size, and Classification of Field Verified Wetlands..... 14

Table 3 Summary of MnRAM 3.0 Results for Field Verified Wetlands..... 15

Table 4 Summary of Wetland Management Classifications for Field Verified Wetlands... 15

Table 5 Summary of Wetland Management Classifications for Inventoried Wetlands 16

Table 6 Special Resource Wetlands..... 16

EXHIBITS

General Site Location 1

Preliminary Wetland Management Classifications..... 2

Field Verified Wetlands..... 3

Vegetative Diversity/Integrity (for field verified wetlands) 4

Wildlife Habitat Structure (for field verified wetlands) 5

Amphibian Habitat (for field verified wetlands) 6

Fish Habitat (for field verified wetlands)..... 7

Shoreline Protection (for field verified wetlands) 8

Aesthetic, Recreation, Education (for field verified wetlands)..... 9

Wetland Stormwater Sensitivity (for field verified wetlands)..... 10

Stormwater Treatment Needs (for field verified wetlands) 11

Hydrologic Regime (for field verified wetlands)..... 12

Flood Storage (for field verified wetlands)..... 13

Downstream Water Quality (for field verified wetlands) 14

Wetland Water Quality (for field verified wetlands)..... 15

Final Wetland Management Classifications 16

APPENDICES

Recommended Wetland Management Classification System (Draft) A
Preliminary MnRAM 3.0 Wetland Functional Assessment Summary B
MnRAM 3.0 Wetland Functional Assessment for Field Verified Wetlands C

CITY OF RAMSEY

FUNCTIONAL ASSESSMENT OF WETLANDS

February 12, 2007

SUMMARY

Peterson Environmental Consulting (PEC), now part of Westwood Professional Services, Inc., conducted a functional assessment of wetlands within the City of Ramsey. A total of 349 wetlands were identified in the City of Ramsey from National Wetlands Inventory (NWI) and Metropolitan Mosquito Control District (MMCD) data. Using a GIS-based analysis, PEC placed these wetlands into one of four preliminary Wetland Management Classifications: Preserve, Manage 1, Manage 2, or Manage 3. A total of 124 wetlands were initially classified as Preserve and Manage 1 using GIS methods. These wetlands, along with 12 additional wetlands, as requested by the City, were field verified and underwent a complete MnRAM 3.0 analysis. A total of 136 wetlands were assessed in the field between June 13 and November 15, 2006 by Westwood Professional Services, Inc. The MnRAM 3.0 field analysis resulted in the following Wetland Management Classifications for all wetlands inventoried within the City of Ramsey: 40 wetlands classified as Preserve, 46 wetlands classified as Manage 1, 127 wetlands classified as Manage 2, and 130 wetlands classified as Manage 3.

INTRODUCTION

Project History

In 2005, Peterson Environmental Consulting (PEC), now part of Westwood Professional Services, Inc., and Hoisington Koegler Group, Incorporated (HKGI) assisted the Environmental Protection Task Force (EPTF) and the City of Ramsey in the preparation of a Wetland Buffer Ordinance and development of wetland management classifications. These classifications are used to assign upland buffer requirements under the ordinance. Recommended buffer widths provided in the City of Ramsey buffer ordinance vary by Wetland Management Classification (WMC) grouping as described in Board of Water and Soil Resources (BWSR) guidance document *Recommended Wetland Management Classification System* (Draft) (Appendix A).

According to BWSR's Recommended Wetland Management Classification System (Draft), this system classifies wetlands into one of four categories: Preserve, Manage 1, Manage 2, or Manage 3. Preserve and Manage 1 management categories represent the highest quality wetlands with high rankings for several wetland functions. Wetlands in Preserve and Manage 1 categories require the widest wetland buffers under the City's ordinance to sustain existing high functions and values.

Study Area Description

The study area includes the entire limits of the City of Ramsey. The City of Ramsey is located along the western border of Anoka County and is bounded by Burns Township to the north, Dayton and Anoka to the south, Andover to the east, and Elk River to the west (see Exhibit 1).

The City of Ramsey is home to a large number of wetland communities such as shallow and deep marshes, floodplain forests, hardwood swamps, shrub swamps, shallow open waters, and wet meadows. Wetlands provide the City with a vast array of benefits such as wildlife habitat, water storage to prevent flooding and protect water quality, groundwater recharge and discharge, and recreational and educational opportunities.

Wet meadows, shallow and deep marshes, hardwood swamps, and floodplain forests are the most common wetland communities within the City. Wet meadows are saturated depressions with a seasonal high water table at the surface to 12 inches below during the growing season. Wet meadows are dominated by grasses, sedges, and forbs. Shallow and deep marshes are dominated by cattail, arrowhead, bulrushes, and sedges. Throughout the growing season, shallow marshes have standing water up to six inches in depth and deep marshes have standing water between six inches and three feet in depth. Both shallow and deep marshes are common in surface water and groundwater depressional basins and in the fringes of lakes, ponds, and rivers. Hardwood swamps commonly border shallow and deep marshes and along with floodplain forests, they are also found along the Rum and Mississippi Rivers. Hardwood swamps and floodplain forests are composed of deciduous trees such as silver maple, American elm, cottonwood, and black willow. The soils within the hardwood swamps are saturated and can have up to a foot of standing water. Floodplain forests flood during flood events and are usually drained for much of the growing season and serve as migration corridors for plant and animal species.

MNRAM 3.0 FUNCTION ASSESSMENT METHODOLOGY

The placement of wetlands into wetland management categories requires an assessment of wetland functions and values determined through the application of the Minnesota Routine Assessment Method (MnRAM) version 3.0 to the wetlands in question. The MnRAM 3.0 methodology assesses 15 important wetland functions¹:

1. **Maintenance of Characteristic Vegetative Diversity/Integrity** – this function is the diversity of the wetland vegetation compared to a wetland of the same type under undisturbed conditions.
2. **Maintenance of Hydrologic Regime** – this function is the ability of the wetland to maintain the seasonal water level pattern for the wetland type and measures the degree of disturbance to the wetland hydrology due to human alteration.

¹ Minnesota Board of Water and Soil Resources. *Comprehensive General Guidance for Minnesota Routine Assessment Method (MnRAM) Evaluating Wetland Function, Version 3.0*. July 14, 2004.

3. **Flood/Stormwater Attenuation** – this function is the ability of the wetland to provide flood storage and/or flood wave attenuation.
4. **Downstream Water Quality** – this function is the ability and opportunity of the wetland to protect valuable downstream recreational waters and potable water supplies by removing sediment from stormwater.
5. **Maintenance of Wetland Water Quality** – this function is the ability of a wetland to sustain its characteristics based on the quality and quantity of stormwater runoff entering the wetland.
6. **Shoreline Protection** – this function is evaluated only for those wetlands adjacent to lakes, streams, or deepwater habitats and is rated based on the wetlands opportunity to protect the shoreline.
7. **Maintenance of Characteristic Wildlife Habitat Structure** – this function is the ability of the wetland to support wildlife in a general sense and is not based on any specific species.
8. **Maintenance of Characteristic Fish Habitat** – this function is the ability of the wetland to support native fish populations.
9. **Maintenance of Characteristic Amphibian Habitat** - this function is the ability of the wetland to support amphibian species in a general sense and is not based on any specific species.
10. **Aesthetics/Recreation/Education/Cultural** – this function is based on the wetland’s visibility, accessibility, and evidence of recreational uses, evidence of human influences, and any known educational or cultural purposes.
11. **Commercial Uses** – this function is the ability of the wetland to sustain a commercial crop or other commercially-productive uses.
12. **Ground Water Interaction** – this function determines the most likely type of ground water interaction, i.e. recharge or discharge, or a combination.

Additional Evaluation Information

13. **Restoration Potential** – this function determines the potential for wetland restoration.
14. **Sensitivity to Stormwater & Urban Development** – this function determines the sensitivity of a wetland to stormwater and urban development and is based on the wetland type and diversity of wetland vegetation.
15. **Additional Stormwater Treatment Needs** – this function rates the sustainability of the wetland with regard to stormwater discharge and the need for additional stormwater treatment prior to discharge to the wetland.

Each wetland function is rated with a numeric index according to the formulas provided in the methodology. The scoring system is from 0.1 to 1.0 signifying low to high, respectively, and a score of 2 signifies a rating of exceptional. Each wetland function receives a functional index score with the following ratings:

<u>Functional Ratings</u>	<u>Functional Index Score</u>
Exceptional:	1.01 – 2.00
High:	0.66 – 1.00
Medium:	0.33 – 0.65
Low:	0.10 – 0.32

WETLAND MANAGEMENT CLASSIFICATION SCHEMA

The MnRAM 3.0 assessment provides a basis for developing wetland management classifications. The functional indices from wetlands assessed are used to assign a recommended management class. Using BWSR's recommended system of management classification, wetlands are classified into one of four categories: Preserve, Manage 1, Manage 2, or Manage 3.

Wetlands placed in the **Preserve** Management Classification have at least one of the following characteristics:

- Wetlands rated with exceptional vegetative diversity/integrity, which may include wetlands with natural communities not significantly impacted by invasive species or other human-induced alterations, wetlands harboring endangered or threatened plant species, or rare wetland habitats classified as imperiled (S1) or critically imperiled (S2) by the state rankings.
- Wetlands rated as exceptional for wildlife habitat. These include wetlands known to harbor endangered or threatened animal species, rare communities, or wildlife refuges and fish and wildlife management areas whose purpose is maintaining suitable habitats for wildlife.
- Wetlands rated as high for amphibian habitat.
- Wetlands rated as exceptional for fish habitat. These wetlands include those specifically managed for fish management; designated trout streams, lakes or adjacent wetlands; and known spawning habitat for game fish.
- Wetlands rated high for shoreline protection. Wide wetlands bordering lakes and feeder streams that have persistent, emergent, submergent, or floating-leaved vegetation are critical to protecting the water quality of the lakes from bank erosion and sedimentation from upstream.
- Wetlands rated exceptional for aesthetics/education/recreation/cultural and rated high for wildlife habitat, include those located on public lands that provide a unique or rare recreational, educational, or cultural opportunity, and have high functional level for wildlife since that is typically a primary focus for users.
- Wetlands that are exceptionally sensitive to stormwater impacts and have a vegetative diversity/integrity rating of medium or higher were also placed in this category. These wetlands may have suffered some degradation from human influences due to

their heightened sensitivity. The vegetative quality of the wetland is such that improved management may allow for restoration of the community.

- Wetlands with a high vegetative diversity/integrity rating *and* a high rating for wetland water quality. The vegetative community in these wetlands typically has been only slightly affected by humans and still maintains high functioning to maintain water quality, which is critical to wetland sustainability.
- Wetlands with a high vegetative diversity/integrity rating *and* a high rating for hydrologic regime. The vegetative community in these wetlands typically has been only slightly affected by humans and still maintains high functioning levels for hydrologic regime, which is critical to wetland sustainability.

Wetlands placed in the **Manage 1** Management Classification have at least one of the following characteristics:

- Wetlands rated with high vegetative diversity/integrity, which typically include diverse wetland plant communities with less than 20 percent cover of non-native or invasive species.
- Wetlands rated as high for wildlife habitat. These generally include wetlands located within large tracts of undeveloped land or in parks, which allow for wide high quality upland buffers. In addition, this includes seasonal wetlands that are well buffered.
- Wetlands rated as medium for amphibian habitat. This includes seasonal wetlands that are well buffered.
- Wetlands rated as high for fish habitat. These wetlands are lacustrine/ riverine or are contiguous with a permanent waterbody or watercourse and provide spawning/nursery habitat, or refuge for native fish species in adjacent lakes, rivers or streams.
- Wetlands rated medium for shoreline protection. These wetlands include those that are moderately wide and support persistent emergent, submergent, or floating-leaved vegetative cover bordering lakes and feeder streams.
- Wetlands rated high for aesthetics/education/recreation/cultural *and* medium for wildlife habitat, include those that provide a number of benefits that may include: spatial buffering, accessibility, public ownership, multiple recreational opportunities, and medium-quality wildlife habitat.
- Wetlands that are highly sensitive to stormwater impacts *and* have a vegetative diversity/integrity rating of medium or high were also placed in this category. The vegetative quality of the wetland is such that improved management may allow for restoration of the community.
- Wetlands with a medium vegetative diversity/integrity rating *and* a high rating for wetland water quality. The vegetative community in these wetlands has only been moderately affected by humans and still maintains high functioning levels for water

quality, which is critical to wetland sustainability. These wetlands would likely benefit from active management.

- Wetlands with a medium vegetative diversity/integrity rating *and* a high rating for hydrologic regime were placed in the **Manage 1** category. The vegetative community in these wetlands has only been moderately affected by humans and still maintains high functioning levels for hydrologic regime, which is critical to wetland sustainability. These wetlands would likely benefit from active management.
- Wetlands rated high for commercial use. These wetlands provide important social value without having an altered hydrology.

Wetlands placed in the **Manage 2** Management Classification have at least one of the following characteristics:

- Wetlands rated with medium vegetative diversity/integrity, which typically include wetlands with less diversity and up to 50 percent cover of non-native or invasive species.
- Wetlands rated as medium for wildlife habitat. These often include wetlands that are increasingly separated from natural communities and wildlife corridors; they often lack significant upland buffers and are increasingly altered.
- Wetlands rated as low for amphibian habitat. These wetlands are increasingly altered, but they still have some opportunity to provide either breeding, over wintering, or resting habitat for amphibians.
- Wetlands rated as medium for fish habitat. These wetlands include those which are intermittently connected to waterbodies supporting native fish populations
- Wetlands rated low for shoreline protection. While these wetlands are not providing the highest level of protection to the lake or river systems, their mere presence provides some level of protection that should not be dismissed. These wetlands are typically narrow, with little emergent, submergent, or floating-leaved vegetation.
- Wetlands rated medium for aesthetics/education/recreation/cultural and low for wildlife habitat.

Wetlands placed in the **Manage 3** Management Classification have at least one of the following characteristics:

- Remaining wetlands that did not fit into any of the above-described conditions.
- Wetlands rated low for vegetative diversity/integrity.
- Wetlands rated medium or high for downstream water quality protection and for flood storage/attenuation. This correlation is expected since wetlands that provide higher levels of water quality treatment and runoff/rate control often suffer from ecological degradation.

PRELIMINARY GIS WETLAND MANAGEMENT CLASSIFICATION

PEC completed a GIS-based analysis to generally place wetlands into preliminary Wetland Management Categories. The following data was gathered and incorporated into the GIS:

- a. 2003 Farm Service Agency (FSA) base-map
- b. streams and waterways
- c. National Wetlands Inventory (NWI)
- d. Metropolitan Mosquito Control District (MMCD) digital wetland maps
- e. Anoka County soils (SSURGO2)
- f. Minnesota Land Cover Classification (MLCCS) System polygons
- g. DNR protected waters inventory (PWI)
- h. minor watersheds
- i. city, county, and state roads
- j. scientific and natural areas
- k. County biological survey
- l. Minnesota Natural Heritage Element Occurrences
- m. City of Ramsey parcel map

For the purpose of this inventory and the functions/value analysis, wetlands within the City of Ramsey boundary were identified from NWI and MMCD information. All wetlands considered in this inventory are greater than 0.25 acres in size². These criteria resulted in 349 wetlands that were considered for the MnRAM analyses. Each wetland was assigned a unique Wetland Identification (ID) formatted to meet the MnRAM database requirements as follows:

02-032-25-010-006-A

County Code- Township- Range- Section- PEC ID- Wetland ID

In cases where a wetland existed within more than one section, the wetland was assigned to the section containing the largest wetland area. Wetlands associated with the rivers along the eastern and southern city boundaries were divided into smaller portions that had similar land-use and hydrology based on aerial photo interpretation.

Once all wetlands were assigned a unique Wetland ID, each wetland polygon was attributed with Circular 39 and Cowardin classifications³. If a wetland was comprised of more than one wetland type, then the acreage was calculated for each type. The wetland type provided information on the wetland's hydrologic regime and other hydrologic characteristics. This information was used to answer many of the MnRAM questions relating to each wetland's hydrology.

² 0.25 acres was the size threshold discussed in the project proposal.

³ Wetland classifications are set forth in *Wetlands and Deepwater Habitats of the United States* (FWS/OBS Publication 79/31; Cowardin et al. 1979) and *Wetlands of the United States* (USFWS Circular 39; Shaw and Fredine 1971)

Each wetland was similarly attributed with information from the Anoka County soil survey to assess the dominant soils and hydrologic soil groups. This information was used to answer many MnRAM questions relating to the wetland's soils and land-use capabilities and characteristics.

Data from the additional layers listed above was added to the GIS database and attributed to the appropriate wetland(s) and used to answer questions in the MnRAM database. Many of the MnRAM questions required information on characteristics of soils or land-use within a certain upland area surrounding each wetland. Therefore, 200- and 500-foot wetland buffers⁴ were created around each wetland. Data was analyzed using these buffered areas to assess surrounding land-use, soil/hydrological characteristics, and presence of rare, listed plant and animal species.

Once all the data was incorporated into the GIS database, each wetland was visually evaluated using high resolution 2003 FSA aerial photographs to confirm and support the existing GIS data and to provide estimates of wildlife habitat, hydrologic group and land-use functions. Based on the information entered for each question, the MnRAM database then assigned a functional assessment ranking of "exceptional", "high", "moderate", "low" or "not applicable" to each of its prescribed wetland functions (see Appendix B for preliminary MnRAM 3.0 Wetland Functional Assessment Summary). These rankings were compared to the Wetland Management Classifications⁵ listed and each wetland was assigned an overall preliminary classification of "Preserve", "Manage 1", "Manage 2", or "Manage 3". Exhibit 2 shows the non field-verified preliminary Wetland Management Classifications assigned to all 349 wetlands. A summary of the preliminary classification results are shown in Table 1. Wetlands initially placed into Preserve and Manage 1 classifications were then field verified and underwent a complete MnRAM 3.0 analysis using the existing GIS information, augmented with field observations of applicable functional characteristics.

Special Concerns:

The MnRAM database calculations rely heavily on data relating to vegetative diversity and integrity. This parameter is impossible to assess in the office without field verification, even with the available GIS data. Since only one characteristic must be met to assign a wetland to a given Wetland Management Classification, wetlands are placed in the most appropriate preliminary Wetland Management Classification based on the available data in the office. Not having field-verified vegetative diversity and integrity data available at this stage resulted in some wetlands potentially being under-classified.

Another issue that arose during the GIS analysis was how DNR Heritage Program data on state listed threatened, endangered and special-concern wildlife species affects the

⁴ Based on MnRAM 3.0 Full Text, updated 1-19-06.

⁵ Draft Recommended Wetland Management Classification System, 7/15/04, Minnesota Board of Water and Soil Resources.

preliminary classifications⁶. The full-record rare feature locations were used for the purpose of the GIS assessment, but cannot be reproduced and published due to the possibility that the release of the information could “result in the damage or destruction of a rare element” (correspondence MnDNR, 9-8-2005). One confirmed sighting of an endangered or threatened species in an area is enough to be listed as an element occurrence. The GIS layer that contains the locations of each known occurrence places each occurrence within a circular “buffer” with a radius of ¼ mile.

One characteristic for classifying a wetland as “Preserve” is one recorded sighting of an endangered or threatened animal species in the wetland. Since only one characteristic needs to be met to make a “Preserve” classification, inclusion of this data (including the buffer around each occurrence) resulted in 105 of the area’s 349 wetlands being classified as “Preserve”. Of these 105 wetlands, 91 would become Preserve wetlands based solely on the presence of a state-listed species. In short, many wetlands where no listed species has yet been documented would be shifted to “Preserve” status because the wetland falls within the buffer. We believe this represents a substantial over-estimation of the number of wetlands that actually should be upgraded to Preserve status based on listed wildlife species.

In order to present the Heritage Program GIS data without the over-estimation of Preserve wetlands, Westwood removed the buffering and cited only those wetlands at the centroid of each known occurrence of listed species. A total of nine wetlands contained a known occurrence of a state-listed species.

WETLAND FIELD ASSESSMENT METHODOLOGY

A total of 349 wetlands were identified from NWI and MMCD information and of those, 124 wetlands were initially placed into Preserve and Manage 1 classifications using GIS methods. These wetlands, along with 12 additional wetlands, as requested by the City, were field verified and underwent a complete MnRAM 3.0 analysis using the existing GIS information augmented with field observations of applicable functional characteristics. A total of 136 wetlands were assessed in the field between June 13 and November 15, 2006 by Westwood Professional Services, Inc.

Field Assessment Mapping

A preliminary set of maps were created for use in the field to locate the wetlands, to assist with the assessment of wetland functions, and to record necessary data. Each field map covered one full section of land or one square mile for the entire City boundary at a scale of 1 inch equals 600 feet. The maps showed all 136 wetlands that would be field verified along with their unique Wetland ID and Circular 39 classifications. In addition, section numbers, parcel lines, and road names were added to the field maps. Color aerial photographs from 2003 were used as a base layer on the field maps.

⁶ Records obtained from the Minnesota Department of Natural Resources Natural Heritage and Nongame Research Program.

Field Assessment Procedures

All 136 wetlands were evaluated in the field for wetland function and for restoration potential. The field maps, digital camera, and a letter explaining the project to property owners were used each day during fieldwork. During the field assessment, all the questions posed in the MnRAM 3.0 were answered on MnRAM 3.0 field sheets. The field assessment included an evaluation of the presence and abundance of hydrophytic and invasive vegetation to identify and appraise the plant community, an observation of surface drain tile inlets, ditches or any other drainage feature to identify hydrogeomorphology, buffer of the wetland, land-use within the subwatershed, and apparent public use of the wetland. Also during the field assessment, a digital photograph was taken of all inventoried wetlands to provide a visual record. Each photograph is named using the unique Wetland ID.

Field Data Entry into MnRAM 3.0 Access Database

The MnRAM 3.0 methodology is programmed into a Microsoft Access™ database which all wetland field data is entered, tabulated and stored. The database computes the various functions attributed to wetlands using formulas outlined in the methodology. Upon return to the office, the wetland functional data collected in the field was entered into a copied version of the MnRAM 3.0 database used in the preliminary GIS analysis. A copied version was used in order to update the MnRAM analysis with wetlands verified in the field and also to maintain the MnRAM analysis for those wetlands not field verified.

The MnRAM database contains *The National List of Plant Species that Occur in Wetlands: North Central (Region 3)* (USFWS, Reed, 1988), which includes common and scientific names and the indicator status for each species. This list was used for entering the dominant plant species within each wetland along with the cover class for each species. When wetlands with uncommon or native vegetation were evaluated, those species were also recorded, even if they weren't dominant for the entire wetland. Species were selected from the drop down list to avoid misspellings and improper names. If a species was not present in the plant list, it was added to the species list. For each assessed wetland, the field evaluator recorded their initials and the date of the assessment within the MnRAM database for future reference.

All data entered into the MnRAM database was automatically saved and became part of the permanent record as soon as entered. The database also contains a "Complete Box" which, when checked, indicated that the wetland assessment has been completed. The final MnRAM database contains a total of 349 records which consist of: 1) 136 records updated with the wetland functional data collected in the field for each of the 136 field verified wetlands, and 2) 213 records with the preliminary GIS analysis for the 213 wetlands not assessed in the field.

WETLAND FIELD ASSESSMENT RESULTS

A total of 349 NWI/MMCD wetlands were inventoried within the City of Ramsey and of these, 136 wetlands were verified in the field. Data collected during the field assessment indicated that of the 136 wetlands:

- 122 were wetlands of Circular 39 Types 1 through 8,
- 8 were riverine wetlands, and
- 6 proved to be non-wetland areas

The distribution of the 136 field verified wetlands and associated wetland types, is shown in Exhibit 3.

In order to assess the number and types of wetlands within the City, wetlands were grouped by type according to the Circular 39 methodology and the Cowardin methodology for riverine wetlands since Circular 39 does not provide a type for riverine. Table 2 gives a summary of the wetlands by type, number, and acreage for single and multiple type wetlands. In general, wetlands that had a single Type 2, 3, and 4 classifications were more common than wetlands that had a Type 1, 5, 6, or 7 classification. No wetlands of Type 8 – Bog were inventoried within the City. Wetland complexes with the Type Riverine were the large wetland complexes associated with the Mississippi and Rum River.

Function and Value Assessment

The results of the MnRAM 3.0 assessment are summarized in Table 3. Exhibits 4 through 15 show the functional ratings for the following MnRAM 3.0 wetland functions: Vegetative Diversity/Integrity; Wildlife Habitat; Amphibian Habitat; Fish Habitat; Shoreline Protection; Aesthetic, Recreation, Education; Wetland Stormwater Sensitivity; Stormwater Treatment Needs; Hydrologic Regime; Flood Storage; Downstream Water Quality; and Wetland Water Quality. Based on the assessment, the functional assessment rating of exceptional was assigned to: 1) nine wetlands for Vegetative Diversity/Integrity, 2) six wetlands for Wildlife Habitat, 3) 15 wetlands for Aesthetics, Recreation, and Education, 4) 17 wetlands for Wetland Stormwater Sensitivity, 5) four wetlands for Stormwater Treatment Needs, and 6) four for Wetland Water Quality. None of the wetlands in the City of Ramsey were found to be used for commercial purposes.

As part of the inventory, wetlands offering potential wetland restoration were identified. Twelve wetlands were identified as having wetland restoration potential. This report does not include a detailed investigation as to the feasibility of restoration or how such restoration might be designed for each of these wetlands. Additional investigation would be required to further analyze the feasibility of restoring wetlands.

Information on each of the wetlands is also included in the inventory made available within the MnRAM 3.0 database. See Appendix C for the Wetland Functional Assessment for the field verified wetlands.

WETLAND MANAGEMENT CLASSIFICATION RESULTS

To classify a wetland as Preserve, Manage 1, Manage 2, or Manage 3, the wetland needs to only meet one of the listed characteristics in the Wetland Management Classification Process Flowchart for Basic Wetland Protection (Appendix A). Therefore, each wetland was classified as Preserve, Manage 1, Manage 2, or Manage 3 using the highest ranking criteria listed in the “Wetland Functional Assessment Summary” (see Appendix C). A summary of the Wetland Management Classifications results for the field assessed wetlands is shown in Table 4.

Table 5 summarizes the Wetland Management Classifications for all 349 wetlands inventoried within the City and Exhibit 16 shows the final Wetland Management Classifications for all wetlands, including both the field verified and non-field verified wetlands. At this scale, small wetlands do not easily appear, but maps “zoomed” into a given section can also be provided at request. The Wetland Management Classifications for 25 wetlands were upgraded from Manage 1 and Manage 2 to Preserve as a result of the field assessment. The classifications for these wetlands were upgraded because they met one of the following listed characteristics in the Wetland Management Classification Process Flowchart for Basic Wetland Protection:

- The wetland was a Special Resource: it was either a rare natural community or threatened or endangered species were known to occur in the wetland,
- Rated high for amphibian habitat,
- Rated high for shoreline protection,
- Rated exceptional for aesthetics, recreation, education,
- Rated exceptional for wetland stormwater sensitivity, and
- Rated high for wetland water quality.

A total of nine wetlands are Special Resource based on the DNR Heritage Program data because either: 1) federal or state listed endangered or threatened plant species or species of concern is known to occur in the wetland, or 2) the wetland is a rare natural community. The wetlands that met the Special Resource Criteria are listed below in Table 6.

The Wetland Management Classifications for wetlands were also downgraded to the following:

- Three wetlands were downgraded from Preserve to Manage 1,
- 37 wetlands were downgraded from Manage 1 to Manage 2,
- One wetland was downgraded from Manage 1 to Manage 3, and
- Six wetlands were downgraded from Manage 1 to non-wetland.

The classifications for these wetlands were downgraded because they met one of the following listed characteristics in the Wetland Management Classification Process Flowchart for Basic Wetland Protection:

- Rated medium or low for vegetative diversity/ integrity,
- Rated medium or low for wildlife habitat,
- Rated low for amphibian habitat,
- Rated medium or low for fish habitat,
- Rated low for shoreline protection, and
- Rated medium or low for aesthetics, recreation, and education.

The Wetland Management Classification Preserve was maintained for 15 wetlands and the Wetland Management Classification Manage 1 was maintained for 38 wetlands as a result of the field assessment.

CONCLUSION

The placement of wetlands into Wetland Management Classifications provides a basis for developing wetland buffer width recommendations to the City of Ramsey.

Recommended buffer widths provided in the City of Ramsey buffer ordinance will vary by Wetland Management Classification. Preserve and Manage 1 management categories represent the highest quality wetlands with high rankings for several wetland functions. Wetlands classified as Preserve and Manage 1 require the widest wetland buffers to sustain existing high functions and values. The objective of a Wetland Management Classification system is to assist the City in achieving no net loss of wetland functions and values while providing flexibility for development.

TABLES

Table 1 Summary of Preliminary Wetland Management Classifications^A		
Wetland Management Classification	Number of Wetlands	Percentage
Preserve	18	5%
Manage 1	106	30%
Manage 2	93	27%
Manage 3	132	38%
Totals	349	100%

^A These classifications do not include assessments of vegetative diversity and integrity or presence of state-listed threatened, endangered and special concern wildlife species.

Table 2 Number, Size, and Classification of Field Verified Wetlands				
Circular 39 Classifications	Cowardin Classification	Number of Wetlands	Cumulative Acreage	Average Acres Per Wetland
Type 1 - Seasonally Flooded Basin	PEMA	6	10	1.7
Type 1 Forested / Riverine	PFO1A/R2UBH	3	155	51.7
Type 1 forested / Type 3/ Type 6	PFO1A/PEMCd/PSS1C	1	132	132.0
Type 1 forested /Type 4/ Riverine	PFO1A/PEMH/R2UBH	1	152	152.0
Type 2 - Wet Meadow	PEMB	20	26	1.3
Type 2 / Riverine	PEMB/R2UBH	1	81	81.0
Type 2 / Type 3	PEMB/PEMC	2	12	6.0
Type 2 / Type 6	PEMB/PSS1B	3	235	78.3
Type 2/3/7	PEMBd/PEMCd/PFO1C	1	105	105.0
Type 2/6/7	PEMB/PSS1B/PFO1B	1	313	313.0
Type 3 - Shallow Marsh	PEMC	39	235	6.0
Type 3 / Type 4	PEMC/PEMF	9	118	13.1
Type 3 / Type 5	PEMC/PEMH	1	162	162.0
Type 3 / Type 6	PEMC/PSS1B	5	174	34.8
Type 3 / Type 7	PEMC/PFO1B	3	405	135.0
Type 3/1/90	PEMC/PFO1AR2UBH	1	102	102.0
Type 3/4/5	PEMC/PEMF/PEMH	1	257	257.0
Type 3/4/7	PEMCd/PEMFd/PFO1C	1	124	124.0
Type 3/7/90	PEMC/PFO1C/R2UBH	1	150	150.0
Type 4 - Deep Marsh	PEMF	19	12	0.6
Type 4 / Type 5	PUBG/L1UBH	1	40	40.0
Type 4 / Type 6	PEMF/PSS1C	1	2	2.0
Type 5 - Shallow Open Water	L1UBH	2	14	7.0
Type 6 - Shrub Swamp	PSS1B	4	65	16.3
Type 7 - Hardwood Swamp	PFO1B	2	6	3.0
Type 7 / Riverine	PFO1C/R2UBH	1	23	23.0
Total		130	3,110	1,997.8

Table 3
Summary of MnRAM 3.0 Results for Field Verified Wetlands

Functional Level	Vegetative Diversity/ Integrity	Wildlife Habitat	Fishery Habitat	Amphibian Habitat	Aesthetics, Recreation, Education	Wetland Storm-water Sensitivity	Storm-water Treatment Needs	Hydrologic Regime	Flood Storage	Down-stream Water Quality	Wetland Water Quality	Shoreline Protection
Low	45	1	41	43	10	0	6	3	0	0	6	1
Moderate	57	98	6	34	95	92	74	52	67	28	74	15
High	19	25	9	6	10	21	46	75	63	102	46	1
Exceptional	9	6	0	0	15	17	4	0	0	0	4	0
NA	0	0	74	47	0	0	0	0	0	0	0	113
Total	130	130	130	130	130	130	130	130	130	130	130	130

Table 4
Summary of Wetland Management Classifications for the Field Verified Wetlands

Wetland Management Classification	Number of Wetlands ¹	Percentage
Preserve	40	31%
Manage 1	46	35%
Manage 2	43	33%
Manage 3	1	1%
Totals	130	100%

¹A total of 136 wetlands were verified in the field, however, 6 wetlands proved to be non-wetland areas.

Wetland Management Classification	Number of Wetlands¹	Percentage
Preserve	40	12%
Manage 1	46	13%
Manage 2	127	37%
Manage 3	130	38%
Totals	343	100%

¹A total of 349 wetlands were inventoried, however, 6 wetlands proved to be non-wetland areas during the field assessment.

Wetland ID	Preliminary Management Classification	Final Management Classification
02-032-25-00-000-E	Preserve	Preserve
02-032-25-00-000-F	Preserve	Preserve
02-032-25-06-001-F	Manage 1	Preserve
02-032-25-07-008-E	Preserve	Preserve
02-032-25-07-008-F	Preserve	Preserve
02-032-25-07-008-G	Preserve	Preserve
02-032-25-18-015-A	Preserve	Preserve
02-032-25-18-015-P	Preserve	Preserve
02-032-25-19-022-G	Preserve	Preserve

EXHIBITS

APPENDIX A

Recommended Wetland Management Classification System

Recommended Wetland Management Classification System

To accompany the Minnesota Routine Assessment Method for Evaluating Wetland Functions, Version 3.0

Table of Contents

- 1.0 Wetland Management Recommendations 1
 - 1.1 Wetland Management Classification 1
 - 1.1.1 Preserve 4
 - 1.1.2 Manage 1 4
 - 1.1.3 Manage 2 5
 - 1.1.4 Manage 3 6
 - 1.2 Wetland Restoration Potential 6
 - 1.3 Wetland Susceptibility to Stormwater Input 6
 - 1.4 Wetland Management Standards 7
 - 1.4.1 Wetland Hydrology Standards 7
 - 1.4.2 Wetland Buffer Standards 9
 - 1.4.3 Wetland Sequencing and Mitigation Standards 9
 - 1.4.4 Stormwater Treatment Standards 9
 - 1.5 Best Management Practices 10
- 2.0 Critical Wetland Resources 11

List of Tables

- Table 1.1 Recommended Wetland Management Standards 3
- Table 1.2 Susceptibility of Wetlands to Degradation by Stormwater Inputs 8

List of Figures

- Figure 1.1 Basic Wetland Management Classification Process Flowchart 16
- Figure 1.2 Increased Standard Wetland Management Classification Process Flowchart 17

1.0 Wetland Management Recommendations

This document is a companion to the *Minnesota Routine Assessment Method for Evaluating Wetland Functions* (MnRAM) [version 3.0 or later]. It is meant to provide a basis for developing wetland management recommendations from data gathered in the field. The objective of a wetland management classification system and management standards is to achieve no net loss of wetland functions and values within the management area while providing flexibility for economic development that may require wetland impacts. Impacts to wetlands include not only direct impacts such as filling, draining, and excavating, but also indirect impacts from stormwater inputs, changes to local surface and ground water hydrology, and pollutant loading.

The wetland protection process begins with an inventory and field assessment of all wetlands within the management area. The wetland inventory should identify wetlands by type (Circ. 39 or Cowardin), size, location and landscape setting, and wetland functions. Wetland assessment evaluates functional capacity, both existing and potential, based on inventory information as well as: vegetative community, soils, hydrology, ecologic characteristics, and cultural uses. Following completion of this assessment, each wetland can be assigned to a recommended management class based on the wetland's current and potential functions as well as the evaluation of local critical wetland resources and the wetland's susceptibility to stormwater degradation (Table 1.1). Each wetland can be classified according to a recommended level of wetland protection and acceptable hydrologic changes (Table 1.2).¹

1.1 Wetland Management Classification

With data for each wetland in the assessment area complete, the functional indices can then be used to classify the wetlands. This guidance document presents two classification standards based on expert wetland recommendations and concepts² and in compliance with the state Wetland Conservation Act³, state water quality standards⁴, and various wetland management plans from both metropolitan and rural Minnesota areas.

Suggested classification schemes offered are for Basic Protection and Increased Protection standards; local authorities can choose a management classification level based on local resource needs and preferences. The Basic Protection Standard (Figure 1.1) is the minimum recommended level that will satisfy no-net-loss goals, protect critical resources, and allow for use of some wetlands in development zones. The Increased Protection Standard will include more wetlands in the Preserve category that might otherwise fall into Manage 1, thereby protecting less-than-pristine wetlands in areas that are at an increased risk for wetland impact, whether direct; outright loss by development pressures or indirect; ecological impact from increased use or hydrologic changes.

¹ Based largely on the state guidance document *Storm-Water and Wetlands: Planning and Evaluation Guidelines for Addressing Potential Impacts of Urban Storm-Water and Snow-Melt Runoff on Wetlands*, State of Minnesota Storm Water Advisory Group, 1997.

² Some of which are presented in *Storm-Water and Wetlands: Planning and Evaluation Guidelines for Addressing Potential Impacts of Urban Storm-Water and Snow-Melt Runoff on Wetlands*, State of Minnesota Storm Water Advisory Group, 1997.

³ Minn. Rules Chap. 8420.

⁴ Minn. Rules Chap. 7050.

These two options are offered as a starting point for regional decision-making. Any final policy will need to take into account how current and predicted pressures affect the landscape. An initial evaluation of the effect of both standards will give an indication how the local wetland manager can adapt an individual strategy to maximize resource protection while retaining development benefits to their community. Using GIS-mapping tools will be invaluable for this evaluation.

Using this system will classify a wetland into one of four categories: Preserve, Manage 1, Manage 2, or Manage 3. The Preserve category is for exceptional and highest-functioning wetlands or those sensitive wetlands receiving conveyed storm water runoff that have yet retained a medium level of vegetative diversity/integrity. These wetlands are those that should be preserved in (or improved to) their most pristine or highest functional capacity with wide, natural buffers, in perpetuity. In the Manage 1 category are high-quality wetlands that should be protected from development and other pressures of increased use, including indirect effects. Maintaining natural buffers will help to retain the significant function these wetlands provide. In the event that impacts to these wetlands cannot be avoided, replacement ratios for mitigation should exceed the state-required minimums. Manage 2 wetlands provide medium functional levels and the wetland extent should be maintained. These wetlands often provide optimal restoration opportunity. Manage 3 wetlands have been substantially disturbed; replacement considerations can be minimized⁵ after proper sequencing.

Using the Flowchart

The process can be followed in Figures 1.1 [Basic Standard] and 1.2 [Increase Protection Standard]. Begin at the top and follow the arrows and numbered boxes through the diagram until all of the wetlands have been placed in a management category. Find all wetlands that are classified as Critical Resources, as described in Section 2.0; those wetlands are classified in the Preserve category. Wetlands determined to not fit any of the Critical Resources categories are then classified into one of the four management class groups. The suggested wetland management criteria that could be applied to wetlands within each management class are provided in Table 1.1.

⁵ Replacement minimized down to a 1:1 ratio (in the counties with less than 50 percent of their historic wetlands) or lower (in counties with more than 50 percent of their historic wetlands).

**Table 1.1
Recommended Wetland Management Standards
Minnesota Routine Assessment Method for Evaluating Wetland Functions, Version 3.0**

Management Class	Management Strategy	Stormwater Treatment	Buffer ¹	Mitigation Standard	Hydrologic Guidelines
A—Preserve	Maintain wetland and existing functions, values and wildlife habitat. Possible need for active management of wetland to protect unique features. Apply strict avoidance standards. May be appropriate to develop a conservation easement.	Avoid conveyed flows where prudent and feasible. Upstream sediment and nutrient pretreatment required to maintain background loading rates. Maintain existing hydrology—divert increased flows. Avoid concentrating flows.	≥50 feet for water quality ≥100 feet for wildlife habitat. ² Require monuments to mark buffer edge.	WCA minimum or greater replacement ratio with documented replacement of functions/values. Consider requiring buffer replacement.	<u>Bounce (10 yr):</u> Existing <u>Inundation (1 & 2 yr):</u> Existing <u>(10 yr):</u> Existing <u>Runout Control:</u> ³ No Change Maintain existing hydrology. Encourage infiltration and reduced impervious BMPs. Conduct water budget analysis.
B—Manage 1	Maintain wetland without degrading existing functions, values and wildlife habitat. Apply WCA sequencing process.	Pretreat conveyed flows to maintain background loading rates.	35-50 feet Require monuments to mark buffer edge.	WCA minimum or greater replacement ratio. Replacement of functions and values on site or in location specified in plan for drain/fill/excavation impacts. In compliance with Ch. 7050 the entire area affected by storm water or other wastewater flows must be avoided, minimized and replaced at a replacement ratio of 1:1 for all changes in wetland type.	<u>Bounce (10 yr):</u> Existing + 0.5 ft <u>Inundation (1 & 2 yr):</u> Existing plus 1 day <u>(10 yr):</u> Existing + 7 days <u>Runout Control:</u> ² No Change Maintain existing hydrology. Encourage infiltration and reduced impervious BMPs.
C—Manage 2	Maintain wetland footprint. Improve wetland biological and plant community diversity/integrity or enhance other functions if possible. Apply WCA sequencing process. Consider for restoration.	Pretreat all conveyed discharges to remove all heavy particles and maximize removal of fine grained sediment prior to discharging to the wetland	25-35 feet Require monuments to mark buffer edge.	WCA minimum replacement of acreage and functions/values on site or in location specified in plan for drain/fill/excavation impacts In compliance with Ch. 7050 the entire area affected by storm water or other wastewater flows must be avoided, minimized and replaced at a replacement ratio of 1:1 for all changes in wetland type.	<u>Bounce (10 yr):</u> Existing + 1.0 ft <u>Inundation (1 & 2 yr):</u> Existing plus 2 days <u>(10 yr):</u> Existing + 14 days <u>Runout Control:</u> ² 0 to 1.0 ft above existing runoff
D—Manage 3	Allow for relaxed sequencing and replacement plan flexibility. Consider for restoration/enhancement.	Pretreat all conveyed flows to remove all medium grained and larger sediments.	25 feet	WCA allows mitigation flexibility with minimum standards required in the plan area, see M.R. 8420.0650. In compliance with Ch. 7050 the entire area affected by storm water or other wastewater flows must be avoided, minimized and replaced at a replacement ratio of 1:1 for all changes in wetland type.	<u>Bounce (10 yr):</u> No Limit <u>Inundation (1 & 2 yr):</u> Existing plus 7 days <u>(10 yr):</u> Existing + 21 days <u>Runout Control:</u> ² 0 to 4.0 ft above existing runoff

¹ Buffers are unmowed, naturalized strips of vegetation around the wetland perimeter. Buffers would be provided during development or redevelopment

² Where possible, use 300-foot buffers as per MnRAM (Question #23).

³ If currently landlocked, new outlet should be above delineated wetland elevation.

1.1.1 Preserve

Wetlands classified as **Preserve** have at least one of the following characteristics:

- Wetlands rated with exceptional vegetative diversity/integrity, which may include wetlands with natural communities not significantly impacted by invasive species or other human-induced alterations, wetlands harboring endangered or threatened plant species, or rare wetland habitats classified as imperiled (S1) or critically imperiled (S2) by the state rankings.
- Wetlands rated as exceptional for wildlife habitat. These include wetlands known to harbor endangered or threatened animal species, rare communities, or wildlife refuges and fish and wildlife management areas whose purpose is maintaining suitable habitats for wildlife.
- Wetlands rated as high for amphibian habitat.
- Wetlands rated as exceptional for fish habitat. These wetlands include those specifically managed for fish management; designated trout streams, lakes or adjacent wetlands; and known spawning habitat for game fish.
- Wetlands rated high for shoreline protection. Wide wetlands bordering lakes and feeder streams that have persistent, emergent, submergent, or floating-leaved vegetation are critical to protecting the water quality of the lakes from bank erosion and sedimentation from upstream.
- Wetlands rated exceptional for aesthetics/education/recreation/cultural and rated high for wildlife habitat, include those located on public lands that provide a unique or rare recreational, educational, or cultural opportunity, and have high functional level for wildlife since that is typically a primary focus for users.
- Wetlands that are exceptionally sensitive to stormwater impacts and have a vegetative diversity/integrity rating of medium or higher were also placed in this category. These wetlands may have suffered some degradation from human influences due to their heightened sensitivity. The vegetative quality of the wetland is such that improved management may allow for restoration of the community.
- Wetlands with a high vegetative diversity/integrity rating *and* a high rating for wetland water quality. The vegetative community in these wetlands typically has been only slightly affected by humans and still maintains high functioning to maintain water quality, which is critical to wetland sustainability.
- Wetlands with a high vegetative diversity/integrity rating *and* a high rating for hydrologic regime. The vegetative community in these wetlands typically has been only slightly affected by humans and still maintains high functioning levels for hydrologic regime, which is critical to wetland sustainability.

1.1.2 Manage 1

Wetlands classified as **Manage 1** have at least one of the following characteristics:

- Wetlands rated with high vegetative diversity/integrity, which typically include diverse wetland plant communities with less than 20 percent cover of non-native or invasive species.

- Wetlands rated as high for wildlife habitat. These generally include wetlands located within large tracts of undeveloped land or in parks, which allow for wide high quality upland buffers. In addition, this includes seasonal wetlands that are well buffered.
- Wetlands rated as medium for amphibian habitat. This includes seasonal wetlands that are well buffered.
- Wetlands rated as high for fish habitat. These wetlands are lacustrine/riverine or are contiguous with a permanent waterbody or watercourse and provide spawning/nursery habitat, or refuge for native fish species in adjacent lakes, rivers or streams.
- Wetlands rated medium for shoreline protection. These wetlands include those that are moderately wide and support persistent emergent, submergent, or floating-leaved vegetative cover bordering lakes and feeder streams.
- Wetlands rated high for aesthetics/education/recreation/cultural *and* medium for wildlife habitat, include those that provide a number of benefits that may include: spatial buffering, accessibility, public ownership, multiple recreational opportunities, and medium-quality wildlife habitat.
- Wetlands that are highly sensitive to stormwater impacts *and* have a vegetative diversity/integrity rating of medium or high were also placed in this category. The vegetative quality of the wetland is such that improved management may allow for restoration of the community.
- Wetlands with a medium vegetative diversity/integrity rating *and* a high rating for wetland water quality. The vegetative community in these wetlands has only been moderately affected by humans and still maintains high functioning levels for water quality, which is critical to wetland sustainability. These wetlands would likely benefit from active management.
- Wetlands with a medium vegetative diversity/integrity rating *and* a high rating for hydrologic regime were placed in the **Manage 1** category. The vegetative community in these wetlands has only been moderately affected by humans and still maintains high functioning levels for hydrologic regime, which is critical to wetland sustainability. These wetlands would likely benefit from active management.
- Wetlands rated high for commercial use. These wetlands provide important social value without having an altered hydrology.

1.1.3 Manage 2

Wetlands classified as **Manage 2** have at least one of the following characteristics:

- Wetlands rated with medium vegetative diversity/integrity, which typically include wetlands with less diversity and up to 50 percent cover of non-native or invasive species.
- Wetlands rated as medium for wildlife habitat. These often include wetlands that are increasingly separated from natural communities and wildlife corridors; they often lack significant upland buffers and are increasingly altered.
- Wetlands rated as low for amphibian habitat. These wetlands are increasingly altered, but they still have some opportunity to provide either breeding, over wintering, or resting habitat for amphibians.
- Wetlands rated as medium for fish habitat. These wetlands include those which are intermittently connected to waterbodies supporting native fish populations

- Wetlands rated low for shoreline protection. While these wetlands are not providing the highest level of protection to the lake or river systems, their mere presence provides some level of protection that should not be dismissed. These wetlands are typically narrow, with little emergent, submergent, or floating-leaved vegetation.
- Wetlands rated Medium for aesthetics/education/recreation/cultural and Low for wildlife habitat.

1.1.4 Manage 3

Wetlands classified as **Manage 3** include all of the remaining wetlands that did not fit into any of the above-described conditions. **All** of these wetlands would rate low for vegetative diversity/integrity. Many of these wetlands rate medium or high for downstream water quality protection and for flood storage/attenuation. This correlation is expected since wetlands that provide higher levels of water quality treatment and runoff/rate control often suffer from ecological degradation.

1.2 Wetland Restoration Potential

Evaluate restoration potential of drained and partially drained wetlands in the field. The potential for wetland restoration is determined based on the ease with which the wetland could be restored considering factors including: the number of landowners within the historic wetland area, the size of the potential restoration area, the potential for establishing buffer areas or water quality ponding, the extent and type of hydrologic alteration, and the potential for flooding adjacent properties. Using those parameters, a functional rating of High, Medium, or Low is computed where High means that there will be fewer obstacles to completing a successful restoration.

1.3 Wetland Susceptibility to Stormwater Input

Stormwater runoff carries soil particles, nutrients, and contaminants that can change the ecological balance of the receiving water body. Changes in the volume, rate, frequency, or duration of stormwater entering or discharging from the water body can also change the ecological integrity. Alterations to the ecological integrity of a wetland often result in changes in the functional capacity, fish and wildlife habitat, replacement of native vegetation with invasive and disturbance-tolerant plant species, and/or other impacts to the wetland's functions and values.

A methodology⁶ for determining the susceptibility of wetlands to degradation by stormwater input relates wetland type to a susceptibility level as shown in Table 1.2. Wetlands such as bogs and fens can easily be degraded by changes in the stormwater inflows and are designated as exceptionally susceptible. On the other hand, floodplain forests are more tolerant of changes in the frequency, magnitude and duration of flooding without degradation and are therefore classified as moderately susceptible. Shallow marshes and wet meadows dominated by hybrid cattail, reed canary grass, or other invasive/non-native species (see Table 1.2 and MNRAM 3.0) have a moderate susceptibility to stormwater fluctuations and inputs.

⁶ *Storm-Water and Wetlands: Planning and Evaluation Guidelines for Addressing Potential Impacts of Urban Storm-Water and Snow-Melt Runoff on Wetlands* (State of Minnesota Storm Water Advisory Group, 1997).

1.4 Wetland Management Standards

Wetland management standards are proposed to maintain tolerable hydrologic and water quality changes in wetlands based on the goals stated for the management classifications. The recommended wetland management system (Table 1.1) presents a framework for management of storm water in and around wetlands as well as considering the regulation of impacts to wetlands and wetland mitigation; it is not meant to be used for specific wetland area designs. Replacement plans must also consider other laws that may apply, including local regulations, state Wetland Conservation Act rules, and U.S. Army Corps of Engineers 404 or other permit requirements. Additional investigations or evaluations, including detailed hydrologic modeling and modeling of nutrient loadings and removals, will need to be performed to determine final pipe sizes, pipe configuration, pipe elevations, pipe location, and site grading.

1.4.1 Wetland Hydrology Standards

Wetland hydrology management standards were developed⁷ to protect wetlands from hydrologic impacts. These standards present tolerable hydrologic changes in terms of bounce (difference between the peak flood elevation and the normal wetland elevation), inundation period (time that flood waters temporarily stored in the wetland exceed the normal wetland elevation), and runout control (elevation of the outlet). It is assumed that wetland impacts will be minimized and existing wetland functions and values will be maintained if these standards are implemented.

⁷ Standards shown in Table 1.1.

Table 1.2
Susceptibility of Wetlands to Degradation by Stormwater Impacts⁸
Minnesota Routine Assessment Method for Evaluating Wetland Functions, Version 3.0

Exceptionally Susceptible Wetland Types:¹	Highly Susceptible Wetland Types:²	Moderately Susceptible Wetland Types:³	Least Susceptible Wetland Types:⁴
Sedge Meadows	Shrub-carrs ^a	Floodplain Forests ^a	Gravel Pits
Open Bogs	Alder Thickets ^b	Fresh (Wet) Meadows ^b	Cultivated Hydric Soils
Coniferous Bogs	Fresh (Wet) Meadows ^{c, e}	Shallow Marshes ^c	Dredged Material/Fill Material Disposal Sites
Calcareous Fens	Shallow Marshes ^{d, c}	Deep Marshes ^c	
Low Prairies	Deep Marshes ^{d, c}		
Lowland Hardwood Swamps			
Seasonally Flooded Wetlands			

¹ Special consideration must be given to avoid altering these wetland types. Inundation must be avoided. Water chemistry changes due to alteration by stormwater impacts can also cause adverse impacts. Note: All scientific and natural areas and pristine wetland should be considered in this category regardless of wetland type.

² a., b., c. Can tolerate inundation from 6 inches to 12 inches for short periods of time. May be completely dry in drought or late summer conditions. d. Can tolerate +12 inches inundation, but adversely impacted by sediment and/or nutrient loading and prolonged high water levels. e. Some exceptions.

³ a. Can tolerate annual inundation of 1 to 6 feet or more, possibly more than once/year. b. Fresh meadows that are dominated by reed canary grass. c. Shallow marshes dominated by reed canary grass, cattail, giant reed, or purple loosestrife.

⁴ These wetlands are usually so degraded that input of urban storm water may not have adverse impacts.

Notes: There will always be exceptions to the general categories listed above. Use best professional judgment. A more complete description of wetland characteristics under each category is contained in Appendix A of the source (see footnote). Pristine wetlands are those that show little disturbance from human activity.

⁸ **Adapted from:** *Storm-Water and Wetlands: Planning and Evaluation Guidelines for Addressing Potential Impacts of Urban Storm-Water and Snow-Melt Runoff on Wetlands*, State of Minnesota Storm-Water Advisory Group, June 1997.

1.4.2 Wetland Buffer Standards

Wetland buffer standards were developed with the focus on the buffer widths necessary for protecting water quality and for providing wildlife habitat. Suggested wetland buffer standards in Table 1.1 were developed based on a review of the scientific literature. The literature shows that the effectiveness of wetland buffers in removing sediments and nutrients from surface runoff varies widely due to many factors which include but are not limited to: slope, vegetative cover density, vegetation types, and width. Typically, buffers are established for their water quality improvement potential. High quality wildlife habitat requires significantly wider buffers and higher vegetative diversity/integrity.

Results from numerous studies on the effectiveness of buffers for improving water quality were compiled in a report prepared for the Minnehaha Creek Watershed District⁹. This data suggests that buffer widths of 50 feet generally will provide adequate protection from suspended solids for maintaining high water quality.

The data for phosphorus removal shows a slightly stronger, although not statistically significant, trend. Buffers wider than 60 feet showed considerably greater total phosphorus reductions than narrower buffers (69 percent of those buffers reduced total phosphorus by more than 70 percent).

Another major function of wetland buffers is providing wildlife habitat. Recommendations in the literature for wetland buffer maintenance for optimal wildlife functions range from an absolute minimum of 50 feet up to 600 feet. In general, wider buffers are suggested as providing greater wildlife benefits. Reasonable wildlife benefits can be realized with the retention of 100-foot wide buffers. Several communities in the Twin Cities Metropolitan area have enacted wetland buffer ordinances with required buffer widths up to 100 feet.

1.4.3 Wetland Sequencing and Mitigation Standards

The wetland sequencing and mitigation standards presented are suggestions based on interagency discussions and experiences with Comprehensive Wetland Management Plans. The goal of the recommended standards is to provide incentives to protect high quality wetland resources while realizing that low quality wetlands would not receive as stringent protection.

There are specific standards that must be met according to state and federal rules (WCA, 404, etc.). They can be varied by local plan and these management standards could serve as a basis, but not a substitute, for a local plan. Some management prescriptions suggested here could be implemented without a formalized local plan but all local, state, and federal rules would still apply. The COE could use these standards to vary replacement ratios on a case-by-case basis.

1.4.4 Stormwater Treatment Standards

Stormwater treatment management standards were developed to protect wetlands from water quality impacts. Various levels of pre-treatment of conveyed stormwater are recommended based on wetland management classification.

⁹ EOR, 2001

1.5 Best Management Practices

A table of common best management practices (BMPs) is provided in the Comprehensive Guidance. It includes a description of the benefits of each, pollutants controlled, and some general construction requirements. A comprehensive selection and design manual¹⁰ for BMP usage in cold climates covers a total of 40 BMPs including:

- Definition and description of the BMP
- Discussion of the BMP's means of operation
- Diagrams and information to guide design and installation
- Listing of inspection and maintenance considerations
- References for more detailed information

A comprehensive guide¹¹ to BMPs for protection and improvement of water quality in Minnesota includes the major principles and notable points relating to BMP practices. This is not a design manual. The BMP approaches are split into several categories including:

- BMPs for Storm Water Systems
- Detention Ponds
- Erosion Protection and Sediment Control
- Pollution Prevention

In addition, the manual includes a section summarizing the attributes of various hydrologic models. Best management practices should be implemented to the extent feasible in all construction projects to maintain and prevent degradation of wetland functions and values.

¹⁰ *The Minnesota Urban Small Sites BMP Manual – Stormwater Best Management Practices for Cold Climates*, Metropolitan Council and Barr Engineering Co., 2001.

¹¹ *Protecting Water Quality in urban Areas – Best Management Practices for Dealing with Storm Water Runoff from Urban, Suburban, and Developing Areas of Minnesota*, Minnesota Pollution Control Agency, 2000.

2.0 Critical Wetland Resources

Wetlands in the assessment area should be evaluated for designation as critical resources based on several features defined in Minnesota Statutes. These critical wetland resources should be classified into the Preserve management class due to their special functions. Criteria for designating wetlands as critical resources are as follows:

- Outstanding Resource Value Waters (Minn. Rules 7050.0180)
- Designated Scientific and Natural Areas (Minn. Rules 86A.05)
- Wetlands with known occurrences of Threatened or Endangered Species (Minn. Stat. 84.0895)
- State Wildlife Management Areas (Minn. Stat. 86A.05, subpart 8)
- State Aquatic Management Areas (Minn. Stat. 86A.05, subpart 14).
- Wellhead Protection Areas (Minn. Stat. 103I.101, MN Rules Chapter 4720).
- Sensitive Ground Water Areas (MN Rules 8420.0548, Subp. 6).
- Designated trout streams or trout lakes (MN Rules 6264.0050).
- Calcareous fens (MN Rules 8420.1010 through 8420.1060).
- High priority areas for wetland preservation, enhancement, restoration and establishment (MN Rules 8420.0350, subpart 2).
- Designated Historic or Archaeological Sites
- State or federal designated wild and scenic rivers (MN Rule Chapter 7050)

2.1 Outstanding Resource Value Waters

"Outstanding resource value waters" are defined in MN Rules 7050.0180 as waters within the Boundary Waters Canoe Area Wilderness; Voyageur's National Park; and Department of Natural Resources designated scientific and natural areas; wild, scenic, and recreational river segments; Lake Superior; those portions of the Mississippi River from Lake Itasca to the southerly boundary of Morrison County that are included in the Mississippi Headwaters Board comprehensive plan dated February 12, 1981; and other waters of the state with high water quality, wilderness characteristics, unique scientific or ecological significance, exceptional recreational value, or other special qualities which warrant stringent protection from pollution.

2.1.1 Calcareous Fens

Calcareous fens are defined in MN Rules 8420.1020 as peat-accumulating wetlands dominated by distinct groundwater inflows having specific chemical characteristics. The water is characterized as circumneutral to alkaline, with high concentrations of calcium and low dissolved oxygen content. The chemistry provides an environment for specific and often rare hydrophytic plants¹². Minnesota Rules 8420.1010-1070 sets out minimum standards and criteria for the identification, protection, and management of calcareous fens as authorized by Minnesota Statutes, section 103G.223. The MnDNR is charged with identifying and maintaining a list of calcareous fens in the state and maintains a database of them. Calcareous fens are also listed in the Classifications for Waters in

¹² MN Rules 8420.1020

Major Surface Water Drainage Basins¹³. Finally, the rules for Nondegradation of Outstanding Resource Value Waters¹⁴ also lists identified calcareous fens in the state.

2.1.2 Scientific and Natural Areas

State scientific and natural areas (SNA) are established to protect and perpetuate, in an undisturbed natural state, those natural features which possess exceptional scientific or educational value (MN Statutes 86A.05). This may include but is not limited to any of the following features: geological processes; significant fossil evidence, an undisturbed plant community, an ecological community significantly illustrating the process of succession and restoration to natural condition following disruptive change; a habitat supporting a vanishing, rare, endangered, or restricted species of plant or animal; a relict flora or fauna persisting from an earlier period; or a seasonal haven for concentrations of birds and animals, or a vantage point for observing concentrated populations, such as a constricted migration route. The area should embrace an area large enough to permit effective research or educational functions and to preserve the inherent natural values of the area.

2.1.3 Habitat for Designated Endangered, Threatened, or Special Concern Species

Endangered and threatened plant and animal species are protected in Minnesota as specified in MN Statutes 84.0895. In MN Statutes, Subp. 3, species of wild animal or plant are designated as:

1. **Endangered**, if the species is threatened with extinction throughout all or a significant portion of its range; or
2. **Threatened**, if the species is likely to become endangered within the foreseeable future throughout all or a significant portion of its range; or
3. **Species of special concern**, if although the species is not endangered or threatened, it is extremely uncommon in this state, or has unique or highly specific habitat requirements and deserves careful monitoring of its status.

In 1987, the Minnesota County Biological Survey (MCBS) began a systematic survey of rare biological features. The goal of the MCBS is to identify significant natural areas and to collect and interpret data on the distribution and ecology of rare plants, rare animals, and native plant communities. The MCBS data for the assessment area (if available) should be examined for sites with medium, high and outstanding biologic diversity significance.

The MnDNR Natural Heritage and Nongame Research Program (Natural Heritage Program) collects, manages, and interprets information about nongame animals, native plants, and plant communities to promote the wise stewardship of these resources. The Natural Heritage Program has developed a ranking system that is intended to reflect the extent and condition of natural communities and species in Minnesota.¹⁵ These 'state ranks' have no legal ramifications, they are used by the Natural

¹³ MN Rules 7050.0470

¹⁴ MN Rules 7050.0180, Subp. 6

¹⁵ Aaseng, N.E., J.C. Almendinger, R.P. Dana, B.C. Delaney, H.L. Dunevitz, K.A. Rusterholz, N.P. Sather, and D.S. Wovcha. 1993. Minnesota's Native Vegetation: A Key to Natural Communities, Version 1.5. Minnesota Department of Natural Resources Biological Report No. 20. Natural Heritage Program.

Heritage Program to set priorities for research and for conservation planning. They are grouped as follows:

State Element Rank:

S1: Critically imperiled in the state because of extreme rarity (5 or fewer occurrences or very few remaining individuals or acres) or because of some factor(s) making it especially vulnerable to extirpation from the state.

S2: Imperiled in state because of rarity (6 to 20 occurrences or few remaining individuals or acres) or because of some factor(s) making it very vulnerable to extirpation from the state.

S3: Rare or uncommon in state (on the order of 21 to 100 occurrences).

S4: Apparently secure in state with many occurrences.

S5: Demonstrably secure in state and essentially ineradicable under present conditions.

SH: Of historical occurrence in the state, perhaps having not been verified in the past 20 years, and suspected to be still extant.

SN: Regularly occurring, usually migratory and typically nonbreeding species for which no significant or effective habitat conservation measures can be taken in the state.

SR: Reported from the state, but without persuasive documentation which would provide a basis for either accepting or rejecting the report.

SRF: Reported falsely.

SU: Undetermined. Possibly in peril in the state but status uncertain; need more information.

SX: Extirpated within the state.

The Natural Heritage Program information database should be searched to determine if any endangered, threatened, or special concern species have been sighted within 500 feet of the assessment area. The list of species, the subwatershed location, legal protection status, state element rank and county should be compiled.

2.1.4 State Wildlife Management Areas

State wildlife management areas are established to protect those lands and waters which have a high potential for wildlife production and to develop and manage these lands and waters for the production of wildlife, for public hunting, fishing, and trapping, and for other compatible outdoor recreational uses¹⁶. State wildlife management areas satisfy the following criteria:

1. Includes appropriate wildlife lands and habitat, including but not limited to marsh or wetlands and the margins thereof, ponds, lakes, stream bottomlands, and uplands, which permit the propagation and management of a substantial population of the desired wildlife species; and
2. Includes an area large enough to ensure adequate wildlife management and regulation of the permitted recreational uses.

¹⁶ MN Statute 86A.05, subpart 8. A map of all MnDNR Wildlife Management Areas can be found at: www.dnr.state.mn.us/maps/compass.html.

2.1.5 Designated Trout Streams and Lakes

Designated trout streams and lakes in the state of Minnesota are inhabited by trout other than lake trout. Fishing and other restrictions have been placed on these waterbodies to protect and foster the propagation of trout. Wetlands associated with these lakes are an integral part of the whole ecosystem that functions to maintain the characteristics necessary to support the fishery.

A list of all state trout streams and lakes can be found at: www.revisor.leg.state.mn.us/arule/6264/.

2.1.6 Aquatic Management Areas

Minnesota Statutes 86A.05, Subpart 14, allows for the establishment of aquatic management areas to protect, develop, and manage lakes, rivers, streams, and adjacent wetlands and lands that are critical for fish and other aquatic life, for water quality, and for their intrinsic biological value, public fishing, or other compatible outdoor recreational uses. Aquatic management areas may be established to protect wetland areas under ten acres that are donated to the department of natural resources. Aquatic management areas must meet one or more of the following criteria:

1. Provides angler or management access;
2. Protects fish spawning, rearing, or other unique habitat;
3. Protects aquatic wildlife feeding and nesting areas;
4. Protects critical shoreline habitat; or
5. Provides a site for research on natural history.

2.1.7 Wellhead Protection Areas

Wellhead protection is defined as a method of preventing well contamination by effectively managing potential contaminant sources in all or a portion of the well's recharge area. The statutory authority for wellhead protection comes from Minnesota Statutes 103I.101. The rules for establishment of Wellhead Protection Plans are found in Minnesota Rules Chapter 4720, which are administered by the Minnesota Department of Health. Wetlands present within wellhead protection areas are likely to be predominantly recharge wetlands. Since wetlands typically collect surface water runoff from a larger upland area, recharge wetlands within wellhead protection areas have a greater probability of transmitting pollutants to a public groundwater supply than other wetlands. Wellhead protection plans are developed and implemented by the public water supplier, which is typically a city or the Minnesota Department of Health.

2.1.8 Sensitive Groundwater Areas

The Wetland Conservation Act requires that projects proposing to impact wetlands must evaluate whether the impacts would have an adverse impact on groundwater quality¹⁷. If it is determined that

¹⁷ Minnesota Rules 8420.0548, Subpart 6. The state rules governing wellhead protection can be accessed on the web at: www.revisor.leg.state.mn.us/arule/4720/.

a proposed replacement plan would have a significant adverse impact on groundwater quality, the replacement plan must be denied. Wetlands determined to be primarily recharge wetlands as a result of a functional assessment using *MNRAM Version 3.0* should be evaluated for the potential to affect groundwater resources¹⁸.

2.1.9 High-Priority Areas for Wetland Preservation, Enhancement, & Restoration

Water management plans prepared by water management organizations in the metropolitan areas under Minnesota Statutes, section 103B.231 must identify those areas that qualify as high priority areas for wetland preservation, enhancement, restoration, and establishment¹⁹. These priority areas shall be included in the next scheduled water management plan update. Plans should give strong consideration to identifying as high priority areas, minor watersheds having less than 50 percent of their original wetland acreages, and intact wetlands, diminished wetlands, and the areas once occupied by wetlands that have been diminished or eliminated and could feasibly be restored taking into account the present hydrology and use of the area. Plans should give strong consideration to identifying as high priority areas all type 1 or 2 wetlands, and other wetlands at risk of being lost by permanent conversion to other uses. When individual wetlands are identified as high priority for preservation and restoration, the high priority area shall include the wetland and an adjacent buffer strip not less than 16.5 feet wide around the perimeter of the wetland and may include up to four acres of upland for each wetland acre.

Plans may identify additional high priority areas where preservation, enhancement, restoration, and establishment of wetlands would have high public value by providing benefits for water quality, flood water retention, public recreation, commercial use, and other public uses. High priority areas should be delineated by minor or major watershed.

2.1.10 State and Federal Designated Scenic and Wild Rivers

The rules for the protection of state designated scenic and wild rivers is set forth in Minnesota Rules Chapter 6105 as administered by the MnDNR²⁰. Wild rivers are defined as those that exist in a free-flowing state with excellent water quality and with adjacent lands that are essentially primitive and scenic rivers are defined as those that exist in a free-flowing state with adjacent lands that are essentially primitive. Management plans must be developed before a river can be included in the wild and scenic river system. The plans must give emphasis to the preservation and protection of the area's scenic, recreational, natural, historic, and similar values while placing no unreasonable restrictions upon compatible, preexisting, economic uses of particular tracts of land.

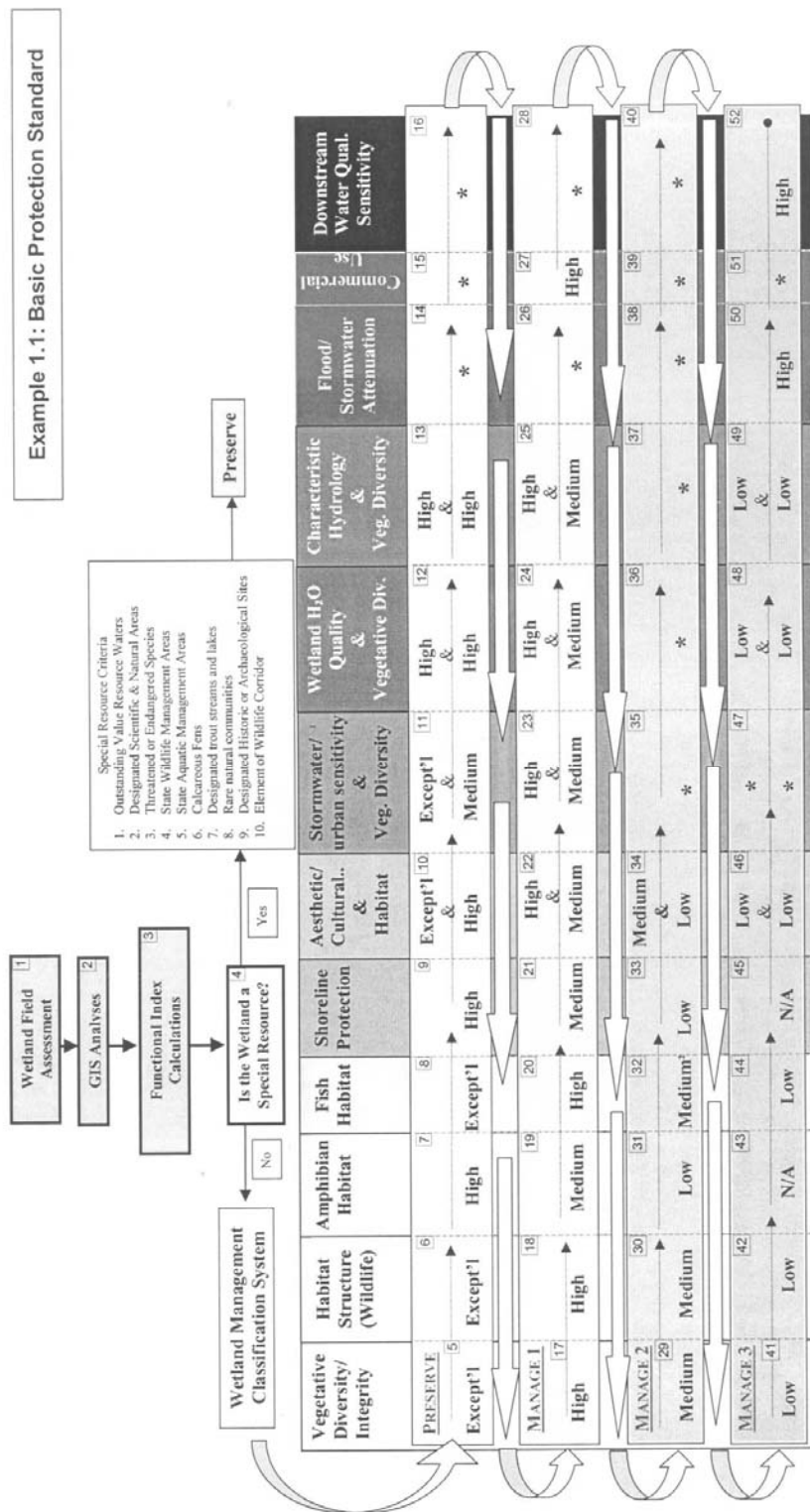
¹⁸ Evaluate according to the guidelines in: *Criteria and Guidelines for Assessing Geologic Sensitivity of Ground Water Resources in Minnesota* (MnDNR, 1991).

¹⁹ Minnesota Rules 8420.0350, Subp. 2

²⁰ The state rules can be accessed at: www.revisor.leg.state.mn.us/arule/6105/.

Figure 1.1
Wetland Management Classification Process Flowchart for Basic Wetland Protection

Each wetland will be ranked into a Wetland Management group by the highest rated function for the wetland. Follow the arrows through numbered boxes in progression through the tables; classify wetlands into the first group that applies.

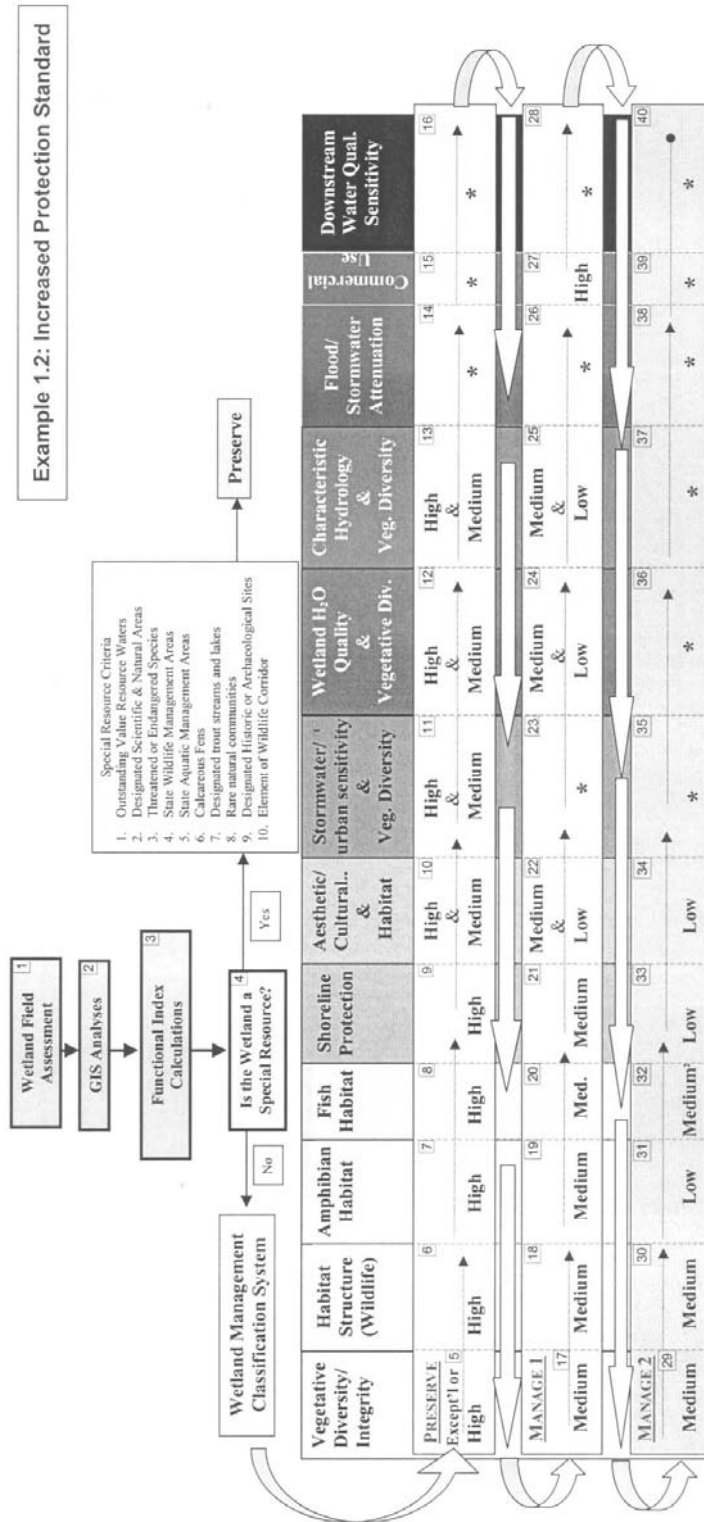


¹ For types as shown in Table 1.2.

² Resources & References\MnRAM\Management Classification\WetMgmtClass_MnRAM_Flowchart.DOC

Figure 1.2
Wetland Management Classification Process Flowchart for Increased Wetland Protection

Each wetland will be ranked into a Wetland Management group by the highest rated function for the wetland. Follow the arrows through numbered boxes in progression through the tables; classify wetlands into the first group that applies.



¹ For types as shown in Table 1.2.

* This rating does not apply here.

APPENDIX B

Preliminary MnRAM 3.0 Wetland Functional Assessment Summary

Wetland Functional Assessment Summary

City of Ramsey Wetland Inventory

Wetland ID	Wildlife Habitat	Fishery Habitat	Amphibian Habitat	Aesthetics, Recreation, Education	Commercial	Ground-Water Interaction	Additional Information		
							Wetland Restoration Potential	Wetland Stormwater Sensitivity	Stormwater Treatment Needs
02-032-24-06-007-A	Not Applicable	High	Not Applicable	Not Applicable	Not Applicable	Recharge	Not Applicable	Moderate	Low
02-032-24-06-007-B	Not Applicable	Not Applicable	High	Not Applicable	Not Applicable	Recharge	Not Applicable	Moderate	Low
02-032-24-06-007-C	Not Applicable	Not Applicable	High	Not Applicable	Not Applicable	Recharge	Not Applicable	High	Low
02-032-24-06-007-D	Not Applicable	High	Not Applicable	Not Applicable	Not Applicable	Recharge	Not Applicable	Moderate	Low
02-032-24-06-007-E	Not Applicable	Not Applicable	Moderate	Not Applicable	Not Applicable	Recharge	Not Applicable	Moderate	Low
02-032-24-06-007-F	Not Applicable	Not Applicable	High	Not Applicable	Not Applicable	Recharge	Not Applicable	Moderate	Low
02-032-24-06-007-G	Not Applicable	Low	Not Applicable	Not Applicable	Not Applicable	Recharge	Not Applicable	Moderate	Low
02-032-24-06-007-H	Not Applicable	Low	Not Applicable	Not Applicable	Not Applicable	Recharge	Not Applicable	Moderate	Low
02-032-24-06-007-I	Not Applicable	Low	Not Applicable	Not Applicable	Not Applicable	Recharge	Not Applicable	Moderate	Low
02-032-24-06-007-J	Not Applicable	Not Applicable	Moderate	Not Applicable	Not Applicable	Recharge	Not Applicable	Moderate	Low
02-032-24-06-007-K	Not Applicable	Not Applicable	Moderate	Not Applicable	Not Applicable	Recharge	Not Applicable	Moderate	Low
02-032-24-06-007-L	Not Applicable	Not Applicable	Not Applicable	Not Applicable	Not Applicable	Recharge	Not Applicable	Moderate	Low
02-032-25-00-000-A	Not Applicable	High	Not Applicable	Not Applicable	Not Applicable	Recharge	Low	Moderate	Low
02-032-25-00-000-B	Not Applicable	High	Not Applicable	Not Applicable	Not Applicable	Recharge	Not Applicable	Not Applicable	Low
02-032-25-00-000-C	Not Applicable	High	High	Not Applicable	Not Applicable	Recharge	Not Applicable	Not Applicable	Low
02-032-25-00-000-D	Not Applicable	High	Not Applicable	Not Applicable	Not Applicable	Recharge	Low	Moderate	Low
★ 02-032-25-00-000-E	Not Applicable	High	Not Applicable	Not Applicable	Not Applicable	Recharge	Not Applicable	Moderate	Low
02-032-25-00-000-F	Not Applicable	High	Not Applicable	Not Applicable	Not Applicable	Recharge	Not Applicable	Moderate	Low
02-032-25-00-000-G	Not Applicable	High	Not Applicable	Not Applicable	Not Applicable	Recharge	Not Applicable	Moderate	Low
02-032-25-01-006-A	Not Applicable	Not Applicable	Moderate	Not Applicable	Not Applicable	Recharge	Not Applicable	Moderate	Low
02-032-25-01-006-B	Not Applicable	Not Applicable	Low	Not Applicable	Not Applicable	Recharge	Not Applicable	Moderate	Low
02-032-25-01-006-C	Not Applicable	High	Not Applicable	Not Applicable	Not Applicable	Recharge	Not Applicable	Moderate	Low
02-032-25-01-006-D	Not Applicable	Low	Not Applicable	Not Applicable	Not Applicable	Recharge	Not Applicable	Moderate	Low

Wetland Functional Assessment Summary

City of Ramsey Wetland Inventory

Wetland ID	Wildlife Habitat	Fishery Habitat	Amphibian Habitat	Aesthetics, Recreation, Education	Commercial	Ground-Water Interaction	Additional Information		
							Wetland Restoration Potential	Wetland Stormwater Sensitivity	Stormwater Treatment Needs
02-032-25-01-006-E	Not Applicable	Low	Not Applicable	Not Applicable	Not Applicable	Recharge	Not Applicable	Moderate	Low
02-032-25-01-006-F	Not Applicable	Low	Not Applicable	Not Applicable	Not Applicable	Recharge	Not Applicable	Moderate	Low
02-032-25-01-006-G	Not Applicable	Low	Not Applicable	Not Applicable	Not Applicable	Recharge	Not Applicable	High	Low
02-032-25-01-006-H	Not Applicable	Not Applicable	Moderate	Not Applicable	Not Applicable	Recharge	Not Applicable	Moderate	Low
02-032-25-01-006-I	Not Applicable	Low	Not Applicable	Not Applicable	Not Applicable	Recharge	Not Applicable	Moderate	Low
02-032-25-01-006-J	Not Applicable	Low	Not Applicable	Not Applicable	Not Applicable	Recharge	Not Applicable	Moderate	Low
02-032-25-01-006-K	Not Applicable	Low	Not Applicable	Not Applicable	Not Applicable	Recharge	Not Applicable	Moderate	Low
02-032-25-01-006-L	Not Applicable	Low	Not Applicable	Not Applicable	Not Applicable	Recharge	Not Applicable	Moderate	Low
02-032-25-01-006-M	Not Applicable	Low	Not Applicable	Not Applicable	Not Applicable	Recharge	Not Applicable	Moderate	Low
02-032-25-01-006-N	Not Applicable	Not Applicable	High	Not Applicable	Not Applicable	Recharge	Not Applicable	Moderate	Low
02-032-25-01-006-O	Not Applicable	Low	Not Applicable	Not Applicable	Not Applicable	Recharge	Not Applicable	Moderate	Low
02-032-25-01-006-P	Not Applicable	Not Applicable	Not Applicable	Not Applicable	Not Applicable	Recharge	Not Applicable	Moderate	Low
02-032-25-02-005-A	Not Applicable	Not Applicable	High	Not Applicable	Not Applicable	Recharge	Not Applicable	High	Low
02-032-25-02-005-B	Not Applicable	Moderate	Not Applicable	Not Applicable	Not Applicable	Recharge	Not Applicable	High	Low
02-032-25-02-005-C	Not Applicable	Moderate	Not Applicable	Not Applicable	Not Applicable	Recharge	Not Applicable	High	Low
02-032-25-02-005-D	Not Applicable	Not Applicable	High	Not Applicable	Not Applicable	Recharge	Not Applicable	Moderate	Low
02-032-25-02-005-E	Not Applicable	Not Applicable	Moderate	Not Applicable	Not Applicable	Recharge	Not Applicable	Moderate	Low
02-032-25-02-005-F	Not Applicable	Moderate	Low	Not Applicable	Not Applicable	Recharge	Not Applicable	Moderate	Low
02-032-25-02-005-G	Not Applicable	Moderate	Low	Not Applicable	Not Applicable	Recharge	Not Applicable	Moderate	Low
02-032-25-02-005-H	Not Applicable	Moderate	Low	Not Applicable	Not Applicable	Recharge	Not Applicable	Moderate	Low
02-032-25-02-005-I	Not Applicable	Moderate	Low	Not Applicable	Not Applicable	Recharge	Not Applicable	Moderate	Low
02-032-25-02-005-J	Not Applicable	Not Applicable	Low	Not Applicable	Not Applicable	Recharge	Not Applicable	Moderate	Not Applicable
02-032-25-03-004-A	Not Applicable	Not Applicable	Moderate	Not Applicable	Not Applicable	Recharge	Not Applicable	Moderate	Low

Wetland Functional Assessment Summary

City of Ramsey Wetland Inventory

Wetland ID	Wildlife Habitat	Fishery Habitat	Amphibian Habitat	Aesthetics, Recreation, Education	Commercial	Ground-Water Interaction	Additional Information		
							Wetland Restoration Potential	Wetland Stormwater Sensitivity	Stormwater Treatment Needs
02-032-25-03-004-B	Not Applicable	Not Applicable	Moderate	Not Applicable	Not Applicable	Recharge	Not Applicable	Moderate	Low
02-032-25-03-004-C	Not Applicable	Moderate	Not Applicable	Not Applicable	Not Applicable	Recharge	Not Applicable	Moderate	Low
02-032-25-03-004-D	Not Applicable	Moderate	Not Applicable	Not Applicable	Not Applicable	Recharge	Not Applicable	Exceptional	Low
02-032-25-03-004-E	Not Applicable	Moderate	Not Applicable	Not Applicable	Not Applicable	Recharge	Not Applicable	Not Applicable	Low
02-032-25-03-004-F	Not Applicable	Not Applicable	Moderate	Not Applicable	Not Applicable	Recharge	Not Applicable	Moderate	Low
02-032-25-03-004-G	Not Applicable	Not Applicable	Moderate	Not Applicable	Not Applicable	Recharge	Not Applicable	Moderate	Low
02-032-25-03-004-H	Not Applicable	Not Applicable	Moderate	Not Applicable	Not Applicable	Recharge	Not Applicable	High	Low
02-032-25-03-004-I	Not Applicable	Moderate	Low	Not Applicable	Not Applicable	Recharge	Not Applicable	Exceptional	Low
02-032-25-03-004-J	Not Applicable	Not Applicable	Low	Not Applicable	Not Applicable	Recharge	Not Applicable	Exceptional	Not Applicable
02-032-25-03-004-K	Not Applicable	Moderate	Not Applicable	Not Applicable	Not Applicable	Recharge	Not Applicable	Moderate	Low
02-032-25-03-004-L	Not Applicable	Low	Not Applicable	Not Applicable	Not Applicable	Recharge	Not Applicable	Moderate	Low
02-032-25-03-004-M	Not Applicable	Not Applicable	Moderate	Not Applicable	Not Applicable	Recharge	Not Applicable	Moderate	Low
02-032-25-03-004-N	Not Applicable	Not Applicable	Moderate	Not Applicable	Not Applicable	Recharge	Not Applicable	Moderate	Low
02-032-25-03-004-O	Not Applicable	Not Applicable	Not Applicable	Not Applicable	Not Applicable	Recharge	Not Applicable	Moderate	Low
02-032-25-04-003-A	Not Applicable	Low	Not Applicable	Not Applicable	Not Applicable	Combination Discharge, Recharge	Not Applicable	Moderate	Low
02-032-25-04-003-B	Not Applicable	Not Applicable	Low	Not Applicable	Not Applicable	Recharge	Not Applicable	Moderate	Not Applicable
02-032-25-04-003-C	Not Applicable	Low	Not Applicable	Not Applicable	Not Applicable	Recharge	Not Applicable	Moderate	Low
02-032-25-04-003-D	Not Applicable	Low	Not Applicable	Not Applicable	Not Applicable	Recharge	Not Applicable	Moderate	Low
02-032-25-04-003-E	Not Applicable	Not Applicable	Moderate	Not Applicable	Not Applicable	Recharge	Not Applicable	Moderate	Low
02-032-25-04-003-F	Not Applicable	Not Applicable	Moderate	Not Applicable	Not Applicable	Recharge	Not Applicable	Moderate	Low
02-032-25-04-003-G	Not Applicable	Not Applicable	Not Applicable	Not Applicable	Not Applicable	Recharge	Not Applicable	Moderate	Low
02-032-25-04-003-H	Not Applicable	Not Applicable	Moderate	Not Applicable	Not Applicable	Recharge	Not Applicable	Moderate	Low
02-032-25-04-003-I	Not Applicable	Not Applicable	Moderate	Not Applicable	Not Applicable	Recharge	Not Applicable	Moderate	Low

Wetland Functional Assessment Summary City of Ramsey Wetland Inventory

Wetland ID	Wildlife Habitat	Fishery Habitat	Amphibian Habitat	Aesthetics, Recreation, Education	Commercial	Ground-Water Interaction	Additional Information		
							Wetland Restoration Potential	Wetland Stormwater Sensitivity	Stormwater Treatment Needs
02-032-25-04-003-J	Not Applicable	Not Applicable	Not Applicable	Not Applicable	Not Applicable	Recharge	Not Applicable	Exceptional	Low
02-032-25-04-003-K	Not Applicable	Not Applicable	Not Applicable	Not Applicable	Not Applicable	Recharge	Not Applicable	High	Not Applicable
02-032-25-04-003-L	Not Applicable	Not Applicable	Low	Not Applicable	Not Applicable	Recharge	Not Applicable	Moderate	Not Applicable
02-032-25-05-002-A	Not Applicable	Not Applicable	Moderate	Not Applicable	Not Applicable	Recharge	Not Applicable	Moderate	Low
02-032-25-05-002-B	Not Applicable	Not Applicable	Moderate	Not Applicable	Not Applicable	Recharge	Not Applicable	Moderate	Low
02-032-25-05-002-C	Not Applicable	Not Applicable	Moderate	Not Applicable	Not Applicable	Recharge	Not Applicable	Moderate	Low
02-032-25-05-002-D	Not Applicable	Low	Not Applicable	Not Applicable	Not Applicable	Recharge	Not Applicable	Moderate	Low
02-032-25-05-002-E	Not Applicable	Not Applicable	Not Applicable	Not Applicable	Not Applicable	Recharge	Not Applicable	High	Not Applicable
02-032-25-05-002-F	Not Applicable	Not Applicable	Not Applicable	Not Applicable	Not Applicable	Recharge	Not Applicable	Moderate	Not Applicable
02-032-25-05-002-G	Not Applicable	Moderate	Low	Not Applicable	Not Applicable	Recharge	Not Applicable	High	Low
02-032-25-05-002-H	Not Applicable	Not Applicable	Low	Not Applicable	Not Applicable	Recharge	Not Applicable	Moderate	Not Applicable
02-032-25-05-002-I	Not Applicable	Moderate	Low	Not Applicable	Not Applicable	Recharge	Not Applicable	Exceptional	Low
02-032-25-05-002-J	Not Applicable	Moderate	Low	Not Applicable	Not Applicable	Recharge	Not Applicable	Exceptional	Not Applicable
02-032-25-05-002-K	Not Applicable	Not Applicable	Moderate	Not Applicable	Not Applicable	Recharge	Not Applicable	High	Low
02-032-25-05-002-L	Not Applicable	Not Applicable	Not Applicable	Not Applicable	Not Applicable	Recharge	Not Applicable	Moderate	Low
02-032-25-05-002-M	Not Applicable	Not Applicable	Not Applicable	Not Applicable	Not Applicable	Recharge	Not Applicable	Moderate	Not Applicable
02-032-25-05-002-N	Not Applicable	Not Applicable	Not Applicable	Not Applicable	Not Applicable	Recharge	Not Applicable	Exceptional	Not Applicable
02-032-25-05-002-O	Not Applicable	Low	Not Applicable	Not Applicable	Not Applicable	Recharge	Not Applicable	Moderate	Low
02-032-25-05-002-P	Not Applicable	Not Applicable	Not Applicable	Not Applicable	Not Applicable	Recharge	Not Applicable	Moderate	Low
02-032-25-05-002-Q	Not Applicable	Not Applicable	Not Applicable	Not Applicable	Not Applicable	Recharge	Not Applicable	Moderate	Low
02-032-25-06-001-A	Not Applicable	Moderate	Low	Not Applicable	Not Applicable	Recharge	Not Applicable	Moderate	Low
02-032-25-06-001-B	Not Applicable	Moderate	Low	Not Applicable	Not Applicable	Recharge	Not Applicable	Moderate	Low
02-032-25-06-001-C	Not Applicable	Moderate	Low	Not Applicable	Not Applicable	Recharge	Not Applicable	Exceptional	Low

Wetland Functional Assessment Summary

City of Ramsey Wetland Inventory

Wetland ID	Wildlife Habitat	Fishery Habitat	Amphibian Habitat	Aesthetics, Recreation, Education	Commercial	Ground-Water Interaction	Additional Information		
							Wetland Restoration Potential	Wetland Stormwater Sensitivity	Stormwater Treatment Needs
02-032-25-06-001-D	Not Applicable	Not Applicable	Moderate	Not Applicable	Not Applicable	Recharge	Not Applicable	Moderate	Low
02-032-25-06-001-E	Not Applicable	Not Applicable	Moderate	Not Applicable	Not Applicable	Recharge	Not Applicable	Moderate	Low
★ 02-032-25-06-001-F	Exceptional	Moderate	Not Applicable	Not Applicable	Not Applicable	Combination Discharge, Recharge	Not Applicable	Moderate	Low
02-032-25-06-001-G	Not Applicable	Not Applicable	Moderate	Not Applicable	Not Applicable	Recharge	Not Applicable	Moderate	Low
02-032-25-07-008-A	Not Applicable	Low	Not Applicable	Not Applicable	Not Applicable	Recharge	Not Applicable	Moderate	Low
02-032-25-07-008-B	Not Applicable	Not Applicable	Moderate	Not Applicable	Not Applicable	Recharge	Not Applicable	Moderate	Low
02-032-25-07-008-C	Not Applicable	Not Applicable	Moderate	Not Applicable	Not Applicable	Recharge	Not Applicable	Moderate	Low
02-032-25-07-008-D	Not Applicable	Not Applicable	Moderate	Not Applicable	Not Applicable	Recharge	Not Applicable	Moderate	Low
★ 02-032-25-07-008-E	Exceptional	Moderate	Low	Not Applicable	Not Applicable	Recharge	Not Applicable	Moderate	Low
★ 02-032-25-07-008-F	Exceptional	Not Applicable	High	Not Applicable	Not Applicable	Recharge	Not Applicable	Moderate	Low
★ 02-032-25-07-008-G	Exceptional	Not Applicable	Moderate	Not Applicable	Not Applicable	Recharge	Not Applicable	Moderate	Low
02-032-25-07-008-H	Not Applicable	Not Applicable	Not Applicable	Not Applicable	Not Applicable	Recharge	Not Applicable	Moderate	Low
02-032-25-07-008-I	Not Applicable	Not Applicable	Low	Not Applicable	Not Applicable	Recharge	Not Applicable	Moderate	Not Applicable
02-032-25-07-008-J	Not Applicable	Not Applicable	Not Applicable	Not Applicable	Not Applicable	Recharge	Not Applicable	Moderate	Low
02-032-25-08-009-A	Not Applicable	Not Applicable	Moderate	Not Applicable	Not Applicable	Recharge	Not Applicable	Moderate	Low
02-032-25-08-009-B	Not Applicable	Not Applicable	Moderate	Not Applicable	Not Applicable	Recharge	Not Applicable	Moderate	Low
02-032-25-08-009-C	Not Applicable	Not Applicable	Moderate	Not Applicable	Not Applicable	Recharge	Not Applicable	Moderate	Low
02-032-25-08-009-D	Not Applicable	Moderate	Not Applicable	Not Applicable	Not Applicable	Combination Discharge, Recharge	Not Applicable	High	Moderate
02-032-25-08-009-E	Not Applicable	Not Applicable	Moderate	Not Applicable	Not Applicable	Recharge	Not Applicable	Moderate	Low
02-032-25-09-010-A	Not Applicable	Low	Not Applicable	Not Applicable	Not Applicable	Recharge	Not Applicable	Moderate	Low
02-032-25-09-010-B	Not Applicable	Not Applicable	Low	Not Applicable	Not Applicable	Recharge	Not Applicable	Moderate	Not Applicable
02-032-25-09-010-C	Not Applicable	Low	Not Applicable	Not Applicable	Not Applicable	Recharge	Not Applicable	Moderate	Low

Wetland Functional Assessment Summary

City of Ramsey Wetland Inventory

Wetland ID	Wildlife Habitat	Fishery Habitat	Amphibian Habitat	Aesthetics, Recreation, Education	Commercial	Ground-Water Interaction	Additional Information		
							Wetland Restoration Potential	Wetland Stormwater Sensitivity	Stormwater Treatment Needs
02-032-25-09-010-D	Not Applicable	Not Applicable	Moderate	Not Applicable	Not Applicable	Recharge	Not Applicable	Moderate	Low
02-032-25-09-010-E	Not Applicable	Not Applicable	Moderate	Not Applicable	Not Applicable	Recharge	Not Applicable	Moderate	Low
02-032-25-09-010-F	Not Applicable	Moderate	Not Applicable	Not Applicable	Not Applicable	Combination Discharge, Recharge	Not Applicable	Not Applicable	Low
02-032-25-09-010-G	Not Applicable	Low	Not Applicable	Not Applicable	Not Applicable	Recharge	Not Applicable	Moderate	Low
02-032-25-09-010-H	Not Applicable	Not Applicable	Low	Not Applicable	Not Applicable	Recharge	Not Applicable	Moderate	Not Applicable
02-032-25-09-010-I	Not Applicable	Not Applicable	Low	Not Applicable	Not Applicable	Recharge	Not Applicable	Moderate	Not Applicable
02-032-25-09-010-J	Not Applicable	Not Applicable	Moderate	Not Applicable	Not Applicable	Recharge	Not Applicable	Exceptional	Low
02-032-25-09-010-K	Not Applicable	Not Applicable	Not Applicable	Not Applicable	Not Applicable	Recharge	Not Applicable	Not Applicable	Not Applicable
02-032-25-10-011-A	Not Applicable	Low	Not Applicable	Not Applicable	Not Applicable	Recharge	Not Applicable	Exceptional	Low
02-032-25-10-011-B	Not Applicable	Moderate	Moderate	Not Applicable	Not Applicable	Recharge	Not Applicable	Exceptional	Low
02-032-25-10-011-C	Not Applicable	Low	Not Applicable	Not Applicable	Not Applicable	Recharge	Not Applicable	Moderate	Low
02-032-25-10-011-D	Not Applicable	Low	Not Applicable	Not Applicable	Not Applicable	Recharge	Not Applicable	Moderate	Low
02-032-25-10-011-E	Not Applicable	Low	Not Applicable	Not Applicable	Not Applicable	Recharge	Not Applicable	Moderate	Low
02-032-25-10-011-F	Not Applicable	Not Applicable	Moderate	Not Applicable	Not Applicable	Recharge	Not Applicable	Moderate	Low
02-032-25-10-011-G	Not Applicable	Not Applicable	Moderate	Not Applicable	Not Applicable	Recharge	Not Applicable	Moderate	Low
02-032-25-10-011-H	Not Applicable	Not Applicable	Not Applicable	Not Applicable	Not Applicable	Recharge	Not Applicable	Moderate	Not Applicable
02-032-25-10-011-I	Not Applicable	Not Applicable	Not Applicable	Not Applicable	Not Applicable	Recharge	Not Applicable	Moderate	Not Applicable
02-032-25-11-012-A	Not Applicable	Not Applicable	Low	Not Applicable	Not Applicable	Recharge	Not Applicable	High	Not Applicable
02-032-25-11-012-B	Not Applicable	Not Applicable	Moderate	Not Applicable	Not Applicable	Recharge	Not Applicable	Moderate	Low
02-032-25-11-012-C	Not Applicable	Low	Not Applicable	Not Applicable	Not Applicable	Recharge	Not Applicable	Moderate	Low
02-032-25-11-012-D	Not Applicable	Not Applicable	Not Applicable	Not Applicable	Not Applicable	Recharge	Not Applicable	Moderate	Not Applicable
02-032-25-11-012-E	Not Applicable	Not Applicable	Low	Not Applicable	Not Applicable	Recharge	Not Applicable	Moderate	Not Applicable
02-032-25-11-012-F	Not Applicable	Not Applicable	Not Applicable	Not Applicable	Not Applicable	Recharge	Not Applicable	Exceptional	Not Applicable

Wetland Functional Assessment Summary

City of Ramsey Wetland Inventory

Wetland ID	Wildlife Habitat	Fishery Habitat	Amphibian Habitat	Aesthetics, Recreation, Education	Commercial	Ground-Water Interaction	Additional Information		
							Wetland Restoration Potential	Wetland Stormwater Sensitivity	Stormwater Treatment Needs
02-032-25-11-012-G	Not Applicable	Not Applicable	Not Applicable	Not Applicable	Not Applicable	Recharge	Not Applicable	Moderate	Not Applicable
02-032-25-11-012-H	Not Applicable	Not Applicable	Low	Not Applicable	Not Applicable	Recharge	Not Applicable	Moderate	Not Applicable
02-032-25-11-012-I	Not Applicable	Not Applicable	Not Applicable	Not Applicable	Not Applicable	Recharge	Not Applicable	Moderate	Not Applicable
02-032-25-11-012-J	Not Applicable	Not Applicable	Low	Not Applicable	Not Applicable	Recharge	Not Applicable	Moderate	Not Applicable
02-032-25-11-012-K	Not Applicable	Not Applicable	Moderate	Not Applicable	Not Applicable	Recharge	Not Applicable	Moderate	Not Applicable
02-032-25-11-012-L	Not Applicable	Low	Not Applicable	Not Applicable	Not Applicable	Recharge	Not Applicable	Moderate	Low
02-032-25-11-012-M	Not Applicable	Low	Not Applicable	Not Applicable	Not Applicable	Recharge	Not Applicable	Moderate	Low
02-032-25-11-012-N	Not Applicable	Low	Not Applicable	Not Applicable	Not Applicable	Recharge	Not Applicable	Moderate	Low
02-032-25-11-012-O	Not Applicable	Not Applicable	Low	Not Applicable	Not Applicable	Recharge	Not Applicable	Moderate	Not Applicable
02-032-25-11-012-P	Not Applicable	Not Applicable	Moderate	Not Applicable	Not Applicable	Recharge	Not Applicable	Moderate	Low
02-032-25-11-012-Q	Not Applicable	Not Applicable	Moderate	Not Applicable	Not Applicable	Recharge	Not Applicable	Moderate	Low
02-032-25-11-012-R	Not Applicable	Not Applicable	Moderate	Not Applicable	Not Applicable	Recharge	Not Applicable	High	Low
02-032-25-11-012-S	Not Applicable	Not Applicable	Moderate	Not Applicable	Not Applicable	Recharge	Not Applicable	Moderate	Low
02-032-25-11-012-T	Not Applicable	Not Applicable	Moderate	Not Applicable	Not Applicable	Combination Discharge, Recharge	Not Applicable	Moderate	Low
02-032-25-11-012-U	Not Applicable	Not Applicable	Moderate	Not Applicable	Not Applicable	Recharge	Not Applicable	Moderate	Low
02-032-25-11-012-V	Not Applicable	Not Applicable	Low	Not Applicable	Not Applicable	Recharge	Not Applicable	Exceptional	Not Applicable
02-032-25-11-012-W	Not Applicable	Not Applicable	Low	Not Applicable	Not Applicable	Recharge	Not Applicable	Exceptional	Not Applicable
02-032-25-11-012-X	Not Applicable	Not Applicable	Low	Not Applicable	Not Applicable	Recharge	Not Applicable	Moderate	Not Applicable
02-032-25-12-013-A	Not Applicable	Not Applicable	Not Applicable	Not Applicable	Not Applicable	Recharge	Not Applicable	Exceptional	Low
02-032-25-13-020-A	Not Applicable	Not Applicable	Not Applicable	Not Applicable	Not Applicable	Recharge	Not Applicable	Exceptional	Not Applicable
02-032-25-13-020-B	Not Applicable	Not Applicable	Not Applicable	Not Applicable	Not Applicable	Recharge	Not Applicable	Exceptional	Not Applicable
02-032-25-14-019-A	Not Applicable	Low	Not Applicable	Not Applicable	Not Applicable	Recharge	Not Applicable	Moderate	Low
02-032-25-14-019-B	Not Applicable	Not Applicable	Not Applicable	Not Applicable	Not Applicable	Recharge	Not Applicable	Moderate	Not Applicable

Wetland Functional Assessment Summary

City of Ramsey Wetland Inventory

Wetland ID	Wildlife Habitat	Fishery Habitat	Amphibian Habitat	Aesthetics, Recreation, Education	Commercial	Ground-Water Interaction	Additional Information		
							Wetland Restoration Potential	Wetland Stormwater Sensitivity	Stormwater Treatment Needs
02-032-25-14-019-C	Not Applicable	Not Applicable	Not Applicable	Not Applicable	Not Applicable	Recharge	Not Applicable	Exceptional	Low
02-032-25-14-019-D	Not Applicable	Moderate	Low	Not Applicable	Not Applicable	Recharge	Not Applicable	Moderate	Low
02-032-25-14-019-E	Not Applicable	Moderate	Low	Not Applicable	Not Applicable	Recharge	Not Applicable	Moderate	Low
02-032-25-14-019-F	Not Applicable	Not Applicable	Moderate	Not Applicable	Not Applicable	Recharge	Not Applicable	Moderate	Low
02-032-25-14-019-G	Not Applicable	Moderate	Low	Not Applicable	Not Applicable	Recharge	Not Applicable	Moderate	Not Applicable
02-032-25-14-019-H	Not Applicable	Moderate	Low	Not Applicable	Not Applicable	Recharge	Not Applicable	Moderate	Not Applicable
02-032-25-14-019-I	Not Applicable	Not Applicable	Moderate	Not Applicable	Not Applicable	Recharge	Not Applicable	Moderate	Low
02-032-25-14-019-J	Not Applicable	Not Applicable	Low	Not Applicable	Not Applicable	Recharge	Not Applicable	Moderate	Not Applicable
02-032-25-14-019-K	Not Applicable	Moderate	Not Applicable	Not Applicable	Not Applicable	Recharge	Not Applicable	Moderate	Low
02-032-25-14-019-L	Not Applicable	Not Applicable	Not Applicable	Not Applicable	Not Applicable	Recharge	Not Applicable	Exceptional	Low
02-032-25-14-019-M	Not Applicable	Not Applicable	Not Applicable	Not Applicable	Not Applicable	Recharge	Not Applicable	Exceptional	Low
02-032-25-14-019-N	Not Applicable	Not Applicable	Moderate	Not Applicable	Not Applicable	Recharge	Not Applicable	Moderate	Low
02-032-25-15-018-A	Not Applicable	Not Applicable	Not Applicable	Not Applicable	Not Applicable	Recharge	Not Applicable	Moderate	Not Applicable
02-032-25-15-018-B	Not Applicable	Not Applicable	Low	Not Applicable	Not Applicable	Recharge	Not Applicable	Moderate	Not Applicable
02-032-25-15-018-C	Not Applicable	Not Applicable	Not Applicable	Not Applicable	Not Applicable	Recharge	Not Applicable	Moderate	Not Applicable
02-032-25-15-018-D	Not Applicable	Not Applicable	Not Applicable	Not Applicable	Not Applicable	Recharge	Not Applicable	Moderate	Not Applicable
02-032-25-15-018-E	Not Applicable	Not Applicable	Not Applicable	Not Applicable	Not Applicable	Recharge	Not Applicable	Moderate	Not Applicable
02-032-25-15-018-F	Not Applicable	Low	Moderate	Not Applicable	Not Applicable	Recharge	Not Applicable	Exceptional	Not Applicable
02-032-25-15-018-G	Not Applicable	Moderate	Not Applicable	Not Applicable	Not Applicable	Recharge	Not Applicable	Moderate	Low
02-032-25-15-018-H	Not Applicable	Not Applicable	Not Applicable	Not Applicable	Not Applicable	Combination Discharge, Recharge	Not Applicable	Moderate	Not Applicable
02-032-25-15-018-I	Not Applicable	Not Applicable	Not Applicable	Not Applicable	Not Applicable	Recharge	Not Applicable	High	Not Applicable
02-032-25-15-018-J	Not Applicable	Not Applicable	Not Applicable	Not Applicable	Not Applicable	Recharge	Not Applicable	Not Applicable	Not Applicable
02-032-25-15-018-K	Not Applicable	Not Applicable	Not Applicable	Not Applicable	Not Applicable	Recharge	Not Applicable	Moderate	Not Applicable

Wetland Functional Assessment Summary

City of Ramsey Wetland Inventory

Wetland ID	Wildlife Habitat	Fishery Habitat	Amphibian Habitat	Aesthetics, Recreation, Education	Commercial	Ground-Water Interaction	Additional Information		
							Wetland Restoration Potential	Wetland Stormwater Sensitivity	Stormwater Treatment Needs
02-032-25-16-017-A	Not Applicable	Not Applicable	Not Applicable	Not Applicable	Not Applicable	Recharge	Not Applicable	Moderate	Low
02-032-25-16-017-B	Not Applicable	Not Applicable	Not Applicable	Not Applicable	Not Applicable	Recharge	Not Applicable	Exceptional	Low
02-032-25-16-017-C	Not Applicable	Not Applicable	Moderate	Not Applicable	Not Applicable	Recharge	Not Applicable	Moderate	Low
02-032-25-16-017-D	Not Applicable	Low	Not Applicable	Not Applicable	Not Applicable	Combination Discharge, Recharge	Not Applicable	Moderate	Low
02-032-25-16-017-E	Not Applicable	Not Applicable	Moderate	Not Applicable	Not Applicable	Recharge	Not Applicable	Moderate	Low
02-032-25-16-017-F	Not Applicable	Not Applicable	High	Not Applicable	Not Applicable	Recharge	Not Applicable	Moderate	Low
02-032-25-16-017-G	Not Applicable	Low	Not Applicable	Not Applicable	Not Applicable	Recharge	Not Applicable	Moderate	Low
02-032-25-16-017-H	Not Applicable	Not Applicable	High	Not Applicable	Not Applicable	Recharge	Not Applicable	Moderate	Low
02-032-25-17-016-A	Not Applicable	Not Applicable	Moderate	Not Applicable	Not Applicable	Recharge	Not Applicable	Moderate	Low
02-032-25-17-016-B	Not Applicable	Not Applicable	Not Applicable	Not Applicable	Not Applicable	Recharge	Not Applicable	Moderate	Low
02-032-25-17-016-C	Not Applicable	Not Applicable	Moderate	Not Applicable	Not Applicable	Recharge	Not Applicable	High	Not Applicable
02-032-25-17-016-D	Not Applicable	Not Applicable	Moderate	Not Applicable	Not Applicable	Recharge	Not Applicable	Moderate	Low
02-032-25-17-016-E	Not Applicable	Not Applicable	Moderate	Not Applicable	Not Applicable	Recharge	Not Applicable	Moderate	Low
02-032-25-17-016-F	Not Applicable	Not Applicable	Moderate	Not Applicable	Not Applicable	Recharge	Not Applicable	Moderate	Low
02-032-25-17-016-G	Not Applicable	Not Applicable	Moderate	Not Applicable	Not Applicable	Recharge	Not Applicable	Moderate	Low
02-032-25-17-016-H	Not Applicable	Not Applicable	Moderate	Not Applicable	Not Applicable	Recharge	Not Applicable	Exceptional	Low
02-032-25-17-016-I	Not Applicable	Not Applicable	Moderate	Not Applicable	Not Applicable	Recharge	Not Applicable	Exceptional	Low
02-032-25-17-016-J	Not Applicable	Not Applicable	Not Applicable	Not Applicable	Not Applicable	Recharge	Not Applicable	Moderate	Low
02-032-25-17-016-K	Not Applicable	Not Applicable	Low	Not Applicable	Not Applicable	Recharge	Not Applicable	Exceptional	Low
02-032-25-17-016-L	Not Applicable	Not Applicable	Not Applicable	Not Applicable	Not Applicable	Recharge	Not Applicable	Moderate	Low
02-032-25-18-015-A	Exceptional	Not Applicable	Moderate	Not Applicable	Not Applicable	Recharge	Not Applicable	Exceptional	Low
02-032-25-18-015-B	Not Applicable	Not Applicable	Not Applicable	Not Applicable	Not Applicable	Recharge	Not Applicable	Exceptional	Low
02-032-25-18-015-C	Not Applicable	Not Applicable	Not Applicable	Not Applicable	Not Applicable	Recharge	Not Applicable	Moderate	Low

Wetland Functional Assessment Summary

City of Ramsey Wetland Inventory

Wetland ID	Aesthetics, Recreation, Education				Ground-Water Interaction	Additional Information		
	Wildlife Habitat	Fishery Habitat	Amphibian Habitat	Commercial		Wetland Restoration Potential	Wetland Stormwater Sensitivity	Stormwater Treatment Needs
02-032-25-18-015-D	Not Applicable	Not Applicable	Moderate	Not Applicable	Recharge	Not Applicable	Moderate	Low
02-032-25-18-015-E	Not Applicable	Not Applicable	Moderate	Not Applicable	Recharge	Not Applicable	Moderate	Low
02-032-25-18-015-F	Not Applicable	Not Applicable	High	Not Applicable	Recharge	Not Applicable	Moderate	Low
02-032-25-18-015-G	Not Applicable	Not Applicable	Moderate	Not Applicable	Recharge	Not Applicable	Moderate	Low
02-032-25-18-015-H	Not Applicable	Not Applicable	Moderate	Not Applicable	Recharge	Not Applicable	Moderate	Low
02-032-25-18-015-I	Not Applicable	Not Applicable	Moderate	Not Applicable	Recharge	Not Applicable	Moderate	Low
02-032-25-18-015-J	Not Applicable	Not Applicable	Not Applicable	Not Applicable	Recharge	Not Applicable	Exceptional	Low
02-032-25-18-015-K	Not Applicable	Not Applicable	Moderate	Not Applicable	Recharge	Not Applicable	Moderate	Low
02-032-25-18-015-L	Not Applicable	Not Applicable	Moderate	Not Applicable	Recharge	Not Applicable	Moderate	Low
02-032-25-18-015-M	Not Applicable	Not Applicable	Moderate	Not Applicable	Recharge	Not Applicable	Moderate	Low
02-032-25-18-015-N	Not Applicable	Not Applicable	Not Applicable	Not Applicable	Recharge	Not Applicable	Moderate	Low
02-032-25-18-015-O	Not Applicable	Not Applicable	Moderate	Not Applicable	Recharge	Not Applicable	Moderate	Low
★ 02-032-25-18-015-P	Exceptional	Not Applicable	Moderate	Not Applicable	Recharge	Not Applicable	Moderate	Low
02-032-25-18-015-Q	Not Applicable	Not Applicable	Moderate	Not Applicable	Recharge	Not Applicable	Moderate	Low
02-032-25-19-022-A	Not Applicable	Not Applicable	Moderate	Not Applicable	Recharge	Not Applicable	Exceptional	Low
02-032-25-19-022-B	Not Applicable	Not Applicable	Moderate	Not Applicable	Recharge	Not Applicable	Exceptional	Low
02-032-25-19-022-C	Not Applicable	Not Applicable	Moderate	Not Applicable	Recharge	Not Applicable	Moderate	Low
02-032-25-19-022-D	Not Applicable	High	Not Applicable	Not Applicable	Recharge	Not Applicable	Moderate	Low
02-032-25-19-022-E	Not Applicable	Moderate	Moderate	Not Applicable	Recharge	Not Applicable	Moderate	Low
02-032-25-19-022-F	Not Applicable	Not Applicable	Moderate	Not Applicable	Recharge	Not Applicable	Moderate	Low
★ 02-032-25-19-022-G	Not Applicable	Not Applicable	Moderate	Not Applicable	Recharge	Not Applicable	Moderate	Low
02-032-25-19-022-H	Not Applicable	Not Applicable	Not Applicable	Not Applicable	Recharge	Not Applicable	Moderate	Low
02-032-25-19-022-I	Not Applicable	Not Applicable	Moderate	Not Applicable	Recharge	Not Applicable	Moderate	Low

Wetland Functional Assessment Summary

City of Ramsey Wetland Inventory

Wetland ID	Wildlife Habitat	Fishery Habitat	Amphibian Habitat	Aesthetics, Recreation, Education	Commercial	Ground-Water Interaction	Additional Information		
							Wetland Restoration Potential	Wetland Stormwater Sensitivity	Stormwater Treatment Needs
02-032-25-19-022-J	Not Applicable	Not Applicable	Moderate	Not Applicable	Not Applicable	Recharge	Not Applicable	Moderate	Low
02-032-25-20-023-A	Not Applicable	Low	Not Applicable	Not Applicable	Not Applicable	Recharge	Not Applicable	Moderate	Low
02-032-25-20-023-B	Not Applicable	Not Applicable	Moderate	Not Applicable	Not Applicable	Recharge	Not Applicable	Moderate	Low
02-032-25-20-023-C	Not Applicable	Low	Not Applicable	Not Applicable	Not Applicable	Recharge	Not Applicable	Moderate	Low
02-032-25-20-023-D	Not Applicable	Moderate	Not Applicable	Not Applicable	Not Applicable	Recharge	Not Applicable	Moderate	Low
02-032-25-20-023-E	Not Applicable	Moderate	Low	Not Applicable	Not Applicable	Recharge	Not Applicable	Moderate	Low
02-032-25-20-023-F	Not Applicable	Not Applicable	Not Applicable	Not Applicable	Not Applicable	Recharge	Not Applicable	Moderate	Low
02-032-25-21-024-A	Not Applicable	Not Applicable	Moderate	Not Applicable	Not Applicable	Recharge	Not Applicable	Moderate	Low
02-032-25-21-024-B	Not Applicable	Not Applicable	Moderate	Not Applicable	Not Applicable	Recharge	Not Applicable	Moderate	Low
02-032-25-21-024-C	Not Applicable	Not Applicable	Not Applicable	Not Applicable	Not Applicable	Recharge	Not Applicable	Moderate	Not Applicable
02-032-25-21-024-D	Not Applicable	Not Applicable	Low	Not Applicable	Not Applicable	Recharge	Not Applicable	Moderate	Not Applicable
02-032-25-21-024-E	Not Applicable	Not Applicable	Low	Not Applicable	Not Applicable	Recharge	Not Applicable	Moderate	Not Applicable
02-032-25-21-024-F	Not Applicable	Not Applicable	Low	Not Applicable	Not Applicable	Recharge	Not Applicable	Moderate	Not Applicable
02-032-25-21-024-G	Not Applicable	Not Applicable	Not Applicable	Not Applicable	Not Applicable	Recharge	Not Applicable	Moderate	Not Applicable
02-032-25-21-024-H	Not Applicable	Not Applicable	Not Applicable	Not Applicable	Not Applicable	Recharge	Not Applicable	Moderate	Not Applicable
02-032-25-21-024-I	Not Applicable	Not Applicable	Not Applicable	Not Applicable	Not Applicable	Recharge	Not Applicable	Moderate	Not Applicable
02-032-25-22-025-A	Not Applicable	Low	Not Applicable	Not Applicable	Not Applicable	Recharge	Not Applicable	High	Low
02-032-25-22-025-B	Not Applicable	Not Applicable	Moderate	Not Applicable	Not Applicable	Recharge	Not Applicable	Moderate	Low
02-032-25-22-025-C	Not Applicable	Not Applicable	Moderate	Not Applicable	Not Applicable	Recharge	Not Applicable	High	Low
02-032-25-22-025-D	Not Applicable	Not Applicable	Moderate	Not Applicable	Not Applicable	Recharge	Not Applicable	High	Low
02-032-25-22-025-E	Not Applicable	Not Applicable	Low	Not Applicable	Not Applicable	Recharge	Not Applicable	Moderate	Not Applicable
02-032-25-22-025-F	Not Applicable	Low	Not Applicable	Not Applicable	Not Applicable	Recharge	Not Applicable	Moderate	Low
02-032-25-22-025-G	Not Applicable	Low	Not Applicable	Not Applicable	Not Applicable	Recharge	Not Applicable	Moderate	Low

Wetland Functional Assessment Summary City of Ramsey Wetland Inventory

Wetland ID	Aesthetics, Recreation, Education					Ground-Water Interaction	Additional Information		
	Wildlife Habitat	Fishery Habitat	Amphibian Habitat	Commercial	Wetland Restoration Potential		Wetland Stormwater Sensitivity	Stormwater Treatment Needs	
02-032-25-22-025-H	Not Applicable	Not Applicable	Not Applicable	Not Applicable	Not Applicable	Recharge	Not Applicable	Moderate	Not Applicable
02-032-25-22-025-I	Not Applicable	Not Applicable	Not Applicable	Not Applicable	Not Applicable	Recharge	Not Applicable	Moderate	Not Applicable
02-032-25-22-025-J	Not Applicable	Low	Not Applicable	Not Applicable	Not Applicable	Recharge	Not Applicable	Moderate	Low
02-032-25-22-025-K	Not Applicable	Low	Not Applicable	Not Applicable	Not Applicable	Recharge	Not Applicable	High	Low
02-032-25-22-025-L	Not Applicable	Not Applicable	Not Applicable	Not Applicable	Not Applicable	Recharge	Not Applicable	High	Low
02-032-25-23-026-A	Not Applicable	Low	Not Applicable	Not Applicable	Not Applicable	Recharge	Not Applicable	Moderate	Low
02-032-25-23-026-B	Not Applicable	Low	Not Applicable	Not Applicable	Not Applicable	Recharge	Not Applicable	Exceptional	Low
02-032-25-23-026-C	Not Applicable	Not Applicable	Not Applicable	Not Applicable	Not Applicable	Recharge	Not Applicable	Moderate	Low
02-032-25-23-026-D	Not Applicable	Low	Not Applicable	Not Applicable	Not Applicable	Recharge	Not Applicable	Moderate	Low
02-032-25-23-026-E	Not Applicable	Low	Not Applicable	Not Applicable	Not Applicable	Recharge	Not Applicable	Moderate	Low
02-032-25-23-026-F	Not Applicable	Not Applicable	Not Applicable	Not Applicable	Not Applicable	Recharge	Not Applicable	High	Not Applicable
02-032-25-23-026-G	Not Applicable	Not Applicable	Low	Not Applicable	Not Applicable	Recharge	Not Applicable	Moderate	Not Applicable
02-032-25-23-026-H	Not Applicable	Not Applicable	Not Applicable	Not Applicable	Not Applicable	Recharge	Not Applicable	Moderate	Low
02-032-25-23-026-I	Not Applicable	Not Applicable	Low	Not Applicable	Not Applicable	Recharge	Not Applicable	Moderate	Low
02-032-25-23-026-J	Not Applicable	Not Applicable	Moderate	Not Applicable	Not Applicable	Recharge	Not Applicable	Moderate	Low
02-032-25-23-026-K	Not Applicable	Not Applicable	Moderate	Not Applicable	Not Applicable	Recharge	Not Applicable	Moderate	Low
02-032-25-23-026-L	Not Applicable	Not Applicable	Not Applicable	Not Applicable	Not Applicable	Recharge	Not Applicable	Moderate	Low
02-032-25-24-027-A	Not Applicable	Not Applicable	Low	Not Applicable	Not Applicable	Recharge	Not Applicable	Moderate	Not Applicable
02-032-25-24-027-B	Not Applicable	Not Applicable	Low	Not Applicable	Not Applicable	Recharge	Not Applicable	Moderate	Not Applicable
02-032-25-24-027-C	Not Applicable	Not Applicable	Low	Not Applicable	Not Applicable	Recharge	Not Applicable	Moderate	Not Applicable
02-032-25-24-027-D	Not Applicable	Not Applicable	Low	Not Applicable	Not Applicable	Recharge	Not Applicable	High	Low
02-032-25-24-027-E	Not Applicable	Not Applicable	Low	Not Applicable	Not Applicable	Recharge	Not Applicable	Moderate	Low
02-032-25-24-027-F	Not Applicable	Not Applicable	Low	Not Applicable	Not Applicable	Recharge	Not Applicable	Moderate	Not Applicable

Wetland Functional Assessment Summary

City of Ramsey Wetland Inventory

Wetland ID	Wildlife Habitat	Fishery Habitat	Amphibian Habitat	Aesthetics, Recreation, Education	Commercial	Ground-Water Interaction	Additional Information		
							Wetland Restoration Potential	Wetland Stormwater Sensitivity	Stormwater Treatment Needs
02-032-25-24-027-G	Not Applicable	Not Applicable	Not Applicable	Not Applicable	Not Applicable	Recharge	Not Applicable	High	Not Applicable
02-032-25-24-027-H	Not Applicable	Not Applicable	Low	Not Applicable	Not Applicable	Recharge	Not Applicable	Moderate	Not Applicable
02-032-25-24-027-I	Not Applicable	Not Applicable	Low	Not Applicable	Not Applicable	Recharge	Not Applicable	Moderate	Not Applicable
02-032-25-24-027-J	Not Applicable	Not Applicable	Not Applicable	Not Applicable	Not Applicable	Recharge	Not Applicable	Moderate	Not Applicable
02-032-25-24-027-K	Not Applicable	Not Applicable	Low	Not Applicable	Not Applicable	Recharge	Not Applicable	Moderate	Not Applicable
02-032-25-24-027-L	Not Applicable	Not Applicable	Low	Not Applicable	Not Applicable	Recharge	Not Applicable	Moderate	Not Applicable
02-032-25-24-027-M	Not Applicable	Not Applicable	Low	Not Applicable	Not Applicable	Recharge	Not Applicable	Moderate	Not Applicable
02-032-25-24-027-N	Not Applicable	Not Applicable	Low	Not Applicable	Not Applicable	Recharge	Not Applicable	Moderate	Not Applicable
02-032-25-24-027-O	Not Applicable	Not Applicable	Moderate	Not Applicable	Not Applicable	Recharge	Not Applicable	Moderate	Not Applicable
02-032-25-24-027-P	Not Applicable	Not Applicable	Low	Not Applicable	Not Applicable	Recharge	Not Applicable	Moderate	Not Applicable
02-032-25-24-027-Q	Not Applicable	Not Applicable	Low	Not Applicable	Not Applicable	Recharge	Not Applicable	Moderate	Not Applicable
02-032-25-25-034-A	Not Applicable	Low	Not Applicable	Not Applicable	Not Applicable	Recharge	Not Applicable	Moderate	Low
02-032-25-25-034-B	Not Applicable	Not Applicable	Moderate	Not Applicable	Not Applicable	Recharge	Not Applicable	Moderate	Low
02-032-25-25-034-C	Not Applicable	Not Applicable	Not Applicable	Not Applicable	Not Applicable	Recharge	Not Applicable	Moderate	Not Applicable
02-032-25-25-034-D	Not Applicable	Not Applicable	Not Applicable	Not Applicable	Not Applicable	Recharge	Not Applicable	Moderate	Not Applicable
02-032-25-25-034-E	Not Applicable	Not Applicable	Low	Not Applicable	Not Applicable	Recharge	Not Applicable	Exceptional	Not Applicable
02-032-25-25-034-F	Not Applicable	Not Applicable	Low	Not Applicable	Not Applicable	Recharge	Not Applicable	Exceptional	Not Applicable
02-032-25-25-034-G	Not Applicable	Low	Not Applicable	Not Applicable	Not Applicable	Recharge	Not Applicable	Moderate	Low
02-032-25-25-034-H	Moderate	Not Applicable	Moderate	Moderate	Not Applicable	Recharge	Not Applicable	Moderate	Moderate
02-032-25-26-033-A	Not Applicable	High	Not Applicable	Not Applicable	Not Applicable	Recharge	Not Applicable	Moderate	Low
02-032-25-26-033-B	Not Applicable	Not Applicable	Not Applicable	Not Applicable	Not Applicable	Recharge	Not Applicable	Exceptional	Not Applicable
02-032-25-26-033-C	Not Applicable	High	Not Applicable	Not Applicable	Not Applicable	Combination Discharge, Recharge	Not Applicable	Moderate	Not Applicable
02-032-25-26-033-D	Not Applicable	Not Applicable	Not Applicable	Not Applicable	Not Applicable	Recharge	Not Applicable	Exceptional	Not Applicable

Wetland Functional Assessment Summary City of Ramsey Wetland Inventory

Wetland ID	Wildlife Habitat	Fishery Habitat	Amphibian Habitat	Aesthetics, Recreation, Education	Commercial	Ground-Water Interaction	Additional Information		
							Wetland Restoration Potential	Wetland Stormwater Sensitivity	Stormwater Treatment Needs
02-032-25-26-033-E	Not Applicable	Not Applicable	Low	Not Applicable	Not Applicable	Recharge	Not Applicable	Moderate	Not Applicable
02-032-25-26-033-F	Not Applicable	Low	Not Applicable	Not Applicable	Not Applicable	Recharge	Not Applicable	Moderate	Low
02-032-25-26-033-G	Not Applicable	Not Applicable	Low	Not Applicable	Not Applicable	Recharge	Not Applicable	Moderate	Not Applicable
02-032-25-26-033-H	Not Applicable	Not Applicable	Low	Not Applicable	Not Applicable	Recharge	Not Applicable	Moderate	Not Applicable
02-032-25-26-033-I	Not Applicable	Not Applicable	Low	Not Applicable	Not Applicable	Recharge	Not Applicable	Moderate	Not Applicable
02-032-25-26-033-J	Not Applicable	Low	Not Applicable	Not Applicable	Not Applicable	Recharge	Not Applicable	Moderate	Low
02-032-25-26-033-K	Not Applicable	Not Applicable	Not Applicable	Not Applicable	Not Applicable	Recharge	Not Applicable	Moderate	Not Applicable
02-032-25-26-033-L	Not Applicable	Not Applicable	Low	Not Applicable	Not Applicable	Recharge	Not Applicable	Moderate	Not Applicable
02-032-25-26-033-M	Not Applicable	Not Applicable	Low	Not Applicable	Not Applicable	Recharge	Not Applicable	Moderate	Not Applicable
02-032-25-27-032-A	Not Applicable	Not Applicable	Low	Not Applicable	Not Applicable	Recharge	Not Applicable	Moderate	Not Applicable
02-032-25-27-032-B	Not Applicable	Not Applicable	Low	Not Applicable	Not Applicable	Recharge	Not Applicable	Moderate	Low
02-032-25-27-032-C	Not Applicable	Low	Not Applicable	Not Applicable	Not Applicable	Recharge	Not Applicable	Moderate	Low
02-032-25-27-032-D	Not Applicable	Not Applicable	Low	Not Applicable	Not Applicable	Recharge	Not Applicable	High	Not Applicable
02-032-25-27-032-E	Not Applicable	Low	Not Applicable	Not Applicable	Not Applicable	Recharge	Not Applicable	Moderate	Low
02-032-25-27-032-F	Not Applicable	Not Applicable	Moderate	Not Applicable	Not Applicable	Recharge	Not Applicable	Moderate	Low
02-032-25-27-032-G	Not Applicable	Not Applicable	Low	Not Applicable	Not Applicable	Recharge	Not Applicable	Moderate	Low
02-032-25-27-032-H	Not Applicable	Not Applicable	Moderate	Not Applicable	Not Applicable	Recharge	Not Applicable	Moderate	Low
02-032-25-27-032-I	Not Applicable	Low	Not Applicable	Not Applicable	Not Applicable	Recharge	Not Applicable	Moderate	Low
02-032-25-27-032-K	Not Applicable	Not Applicable	Not Applicable	Not Applicable	Not Applicable	Recharge	Not Applicable	Moderate	Not Applicable
02-032-25-27-032-L	Not Applicable	Not Applicable	Low	Not Applicable	Not Applicable	Recharge	Not Applicable	Moderate	Low
02-032-25-27-032-M	Not Applicable	Not Applicable	Low	Not Applicable	Not Applicable	Recharge	Not Applicable	Moderate	Not Applicable
02-032-25-27-032-N	Not Applicable	Not Applicable	Low	Not Applicable	Not Applicable	Recharge	Not Applicable	Moderate	Not Applicable
02-032-25-27-032-O	Not Applicable	Not Applicable	Low	Not Applicable	Not Applicable	Recharge	Not Applicable	Moderate	Not Applicable

Wetland Functional Assessment Summary





City of Ramsey Wetland Inventory

Wetland ID	Wildlife Habitat	Fishery Habitat	Amphibian Habitat	Aesthetics, Recreation, Education	Commercial	Ground-Water Interaction	Additional Information		
							Wetland Restoration Potential	Wetland Stormwater Sensitivity	Stormwater Treatment Needs
02-032-25-27-032-P	Not Applicable	Not Applicable	Low	Not Applicable	Not Applicable	Recharge	Not Applicable	Moderate	Not Applicable
02-032-25-27-032-Q	Not Applicable	Not Applicable	Low	Not Applicable	Not Applicable	Recharge	Not Applicable	Moderate	Not Applicable
02-032-25-27-032-R	Not Applicable	Not Applicable	Not Applicable	Not Applicable	Not Applicable	Recharge	Not Applicable	Moderate	Not Applicable
02-032-25-27-032-S	Not Applicable	Not Applicable	Not Applicable	Not Applicable	Not Applicable	Recharge	Not Applicable	Moderate	Not Applicable
02-032-25-28-031-A	Not Applicable	Moderate	Low	Not Applicable	Not Applicable	Recharge	Not Applicable	Moderate	Low
02-032-25-28-031-B	Not Applicable	Not Applicable	Moderate	Not Applicable	Not Applicable	Recharge	Not Applicable	Moderate	Low
02-032-25-28-031-C	Not Applicable	Not Applicable	Moderate	Not Applicable	Not Applicable	Recharge	Not Applicable	Moderate	Low
02-032-25-28-031-D	Not Applicable	Not Applicable	Moderate	Not Applicable	Not Applicable	Recharge	Not Applicable	Moderate	Low
02-032-25-28-031-E	Not Applicable	Not Applicable	Moderate	Not Applicable	Not Applicable	Recharge	Not Applicable	Exceptional	Low
02-032-25-28-031-F	Not Applicable	Not Applicable	Moderate	Not Applicable	Not Applicable	Recharge	Not Applicable	Exceptional	Low
02-032-25-28-031-G	Not Applicable	Not Applicable	Low	Not Applicable	Not Applicable	Recharge	Not Applicable	Exceptional	Not Applicable
02-032-25-28-031-H	Not Applicable	Not Applicable	Low	Not Applicable	Not Applicable	Recharge	Not Applicable	Exceptional	Not Applicable
02-032-25-28-031-I	Not Applicable	Not Applicable	Not Applicable	Not Applicable	Not Applicable	Recharge	Not Applicable	Moderate	Not Applicable
02-032-25-28-031-J	Not Applicable	Not Applicable	Not Applicable	Not Applicable	Not Applicable	Recharge	Not Applicable	Moderate	Not Applicable
02-032-25-28-031-K	Not Applicable	Not Applicable	Not Applicable	Not Applicable	Not Applicable	Recharge	Not Applicable	Moderate	Not Applicable
02-032-25-28-031-L	Not Applicable	Not Applicable	Not Applicable	Not Applicable	Not Applicable	Recharge	Not Applicable	Moderate	Not Applicable
02-032-25-28-031-M	Not Applicable	Not Applicable	Not Applicable	Not Applicable	Not Applicable	Recharge	Not Applicable	Moderate	Not Applicable
02-032-25-28-031-N	Not Applicable	Not Applicable	Not Applicable	Not Applicable	Not Applicable	Recharge	Not Applicable	Moderate	Not Applicable
02-032-25-28-031-O	Not Applicable	Not Applicable	Not Applicable	Not Applicable	Not Applicable	Recharge	Not Applicable	Moderate	Not Applicable
02-032-25-28-031-P	Not Applicable	Not Applicable	Not Applicable	Not Applicable	Not Applicable	Recharge	Not Applicable	Moderate	Not Applicable
02-032-25-29-030-A	Not Applicable	Not Applicable	Low	Not Applicable	Not Applicable	Recharge	Not Applicable	Moderate	Low
02-032-25-29-030-B	Not Applicable	Not Applicable	Low	Not Applicable	Not Applicable	Recharge	Not Applicable	Moderate	Not Applicable
02-032-25-29-030-C	Not Applicable	Not Applicable	Moderate	Not Applicable	Not Applicable	Recharge	Not Applicable	Moderate	Low

Wetland Functional Assessment Summary

City of Ramsey Wetland Inventory

Wetland ID	Wildlife Habitat	Fishery Habitat	Amphibian Habitat	Aesthetics, Recreation, Education	Commercial	Ground-Water Interaction	Additional Information		
							Wetland Restoration Potential	Wetland Stormwater Sensitivity	Stormwater Treatment Needs
02-032-25-34-036-A	Not Applicable	Not Applicable	Low	Not Applicable	Not Applicable	Recharge	Not Applicable	Moderate	Not Applicable
02-032-25-34-036-B	Not Applicable	Not Applicable	Low	Not Applicable	Not Applicable	Recharge	Not Applicable	Moderate	Not Applicable
02-032-25-35-037-A	Not Applicable	Not Applicable	Not Applicable	Not Applicable	Not Applicable	Recharge	Not Applicable	Moderate	Not Applicable
02-032-25-35-037-B	Not Applicable	Not Applicable	Low	Not Applicable	Not Applicable	Recharge	Not Applicable	Moderate	Not Applicable
02-032-25-36-038-A	Not Applicable	Not Applicable	Not Applicable	Not Applicable	Not Applicable	Recharge	Not Applicable	Moderate	Not Applicable

 Preserve
 Manage 1
 Manage 2
 Manage 3

APPENDIX C

MnRAM 3.0 Wetland Functional Assessment for Field Verified Wetlands

Wetland Community Summary City of Ramsey Wetland Inventory

Wetland ID	Subwatershed	Wetland Size (acres)	Vegetative Diversity/Integrity							*	
			Community			Wetland Proportion	Individual Community Rating	Highest Wetland Rating	Average Wetland Rating		Weighted Average Wetland Rating
			Cowardin Classification	Circular 39	Plant Community						
02-032-24-06-007-A	Ford Brook	1.090000	L1UBH	Type 5	Shallow, Open Water Communities	100	0.5				
02-032-24-06-007-A						100		Moderate	Moderate	Moderate	<input type="checkbox"/>
02-032-24-06-007-B	Rum River	1.037	PEMC	Type 3	Shallow Marsh	100	1				
02-032-24-06-007-B						100		High	High	High	<input type="checkbox"/>
02-032-24-06-007-C	Rum River	1.700000	PSS1C	Type 6	Shrub Carr	100	1				
02-032-24-06-007-C						100		High	High	High	<input type="checkbox"/>
02-032-24-06-007-D	Rum River	150.5	PEMC	Type 3	Fresh (Wet) Meadow	15	0.5				
02-032-24-06-007-D	Rum River	150.5	PFO1C	Type 7	Hardwood Swamp	62	0.5				
02-032-24-06-007-D	Rum River	150.5	R2UBH			15	0				
02-032-24-06-007-D						92		Moderate	Moderate	Moderate	<input type="checkbox"/>
02-032-24-06-007-E	Rum River	0.44	PEMC	Type 3	Shallow Marsh	100	0.5				
02-032-24-06-007-E						100		Moderate	Moderate	Moderate	<input type="checkbox"/>
02-032-24-06-007-F	Rum River	0.560000	PEMC	Type 3	Shallow Marsh	100	0.5				
02-032-24-06-007-F						100		Moderate	Moderate	Moderate	<input type="checkbox"/>
02-032-24-06-007-J	Rum River	0.945	PEMF	Type 4	Deep Marsh	100	0.5				
02-032-24-06-007-J						100		Moderate	Moderate	Moderate	<input type="checkbox"/>
02-032-24-06-007-K	Rum River	0.496	PEMF	Type 4	Deep Marsh	100	0.5				
02-032-24-06-007-K						100		Moderate	Moderate	Moderate	<input type="checkbox"/>
02-032-25-00-000-A	Trott Brook	101.56	PFO1A	Type 1	Floodplain Forest	18	0.5				
02-032-25-00-000-A	Trott Brook	101.56	R2UBH			44	0				
02-032-25-00-000-A	Trott Brook	101.56	PEMC	Type 3	Shallow Marsh	22	0.5				
02-032-25-00-000-A						84		Moderate	Moderate	Low	<input type="checkbox"/>
02-032-25-00-000-B	Rum River	22.82	R2UBH			84	0.5				
02-032-25-00-000-B	Rum River	22.82	PFO1C	Type 7	Hardwood Swamp	16	0.5				
02-032-25-00-000-B						100		Moderate	Moderate	Moderate	<input type="checkbox"/>

* Denotes incomplete calculation data.

Wetland Community Summary City of Ramsey Wetland Inventory

Wetland ID	Subwatershed	Wetland Size (acres)	Vegetative Diversity/Integrity							*	
			Community			Wetland Proportion	Individual Community Rating	Highest Wetland Rating	Average Wetland Rating		Weighted Average Wetland Rating
			Cowardin Classification	Circular 39	Plant Community						
02-032-25-00-000-C	Rum River	25.67300	R2UBH		Floodplain Forest	74	1				
02-032-25-00-000-C	Rum River	25.67300	PFO1A	Type 1	Floodplain Forest	26	1				
02-032-25-00-000-C						100		High	High	High	<input type="checkbox"/>
02-032-25-00-000-D	Rum River	151.8600	R2UBH			43	0				
02-032-25-00-000-D	Rum River	151.8600	PEMH	Type 4	Deep Marsh	13	0.1				
02-032-25-00-000-D	Rum River	151.8600	PFO1A	Type 1	Floodplain Forest	21	0.5				
02-032-25-00-000-D						77		Moderate	Low	Low	<input type="checkbox"/>
02-032-25-00-000-E	Mississippi River	81.41000	PEMB	Type 2	Fresh (Wet) Meadow	10	0.1				
02-032-25-00-000-E	Mississippi River	81.41000	R2UBH			90	0.1				
02-032-25-00-000-E						100		Exceptional	Exceptional	Exceptional	<input type="checkbox"/>
02-032-25-00-000-F	Mississippi River	31.85000	R2UBH			98	0.5				
02-032-25-00-000-F	Mississippi River	31.85000	PFO1A	Type 1	Floodplain Forest	2	0.5				
02-032-25-00-000-F						100		Exceptional	Exceptional	Exceptional	<input type="checkbox"/>
02-032-25-00-000-G	Mississippi River	97.93000	PFO1A	Type 1	Floodplain Forest	17	0.5				
02-032-25-00-000-G	Mississippi River	97.93000	R2UBH			83	0.5				
02-032-25-00-000-G						100		Moderate	Moderate	Moderate	<input type="checkbox"/>
02-032-25-01-006-A	Ford Brook	2.07	PEMF	Type 4	Deep Marsh	50	0.5				
02-032-25-01-006-A	Ford Brook	2.07	PSS1C	Type 6	Shrub Carr	50	0.5				
02-032-25-01-006-A						100		Moderate	Moderate	Moderate	<input type="checkbox"/>
02-032-25-01-006-C	Ford Brook	12.80000	L1UBH	Type 5	Shallow, Open Water Communities	100	0.5				
02-032-25-01-006-C						100		Moderate	Moderate	Moderate	<input type="checkbox"/>
02-032-25-01-006-H	Rum River	0.269	PSS1C	Type 6	Shrub Carr	30	0.5				
02-032-25-01-006-H	Rum River	0.269	PEMC	Type 3	Shallow Marsh	70	0.1				
02-032-25-01-006-H						100		Moderate	Low	Low	<input type="checkbox"/>
02-032-25-01-006-N	Trott Brook	0.920000	PEMC	Type 3	Shallow Marsh	53	0.1				

* Denotes incomplete calculation data.

Wetland Community Summary City of Ramsey Wetland Inventory

Wetland ID	Subwatershed	Wetland Size (acres)	Vegetative Diversity/Integrity							*	
			Community			Wetland Proportion	Individual Community Rating	Highest Wetland Rating	Average Wetland Rating		Weighted Average Wetland Rating
			Cowardin Classification	Circular 39	Plant Community						
02-032-25-01-006-N	Trott Brook	0.920000	PEMF	Type 4	Deep Marsh	47	0.5				
02-032-25-01-006-N						100		Moderate	Low	Low	<input type="checkbox"/>
02-032-25-02-005-A	Ford Brook	0.32	PEMB	Type 2	Fresh (Wet) Meadow	100	0.5				
02-032-25-02-005-A						100		Moderate	Moderate	Moderate	<input type="checkbox"/>
02-032-25-02-005-D	Trott Brook	0.26	PEMF	Type 4	Deep Marsh	100	0.1				
02-032-25-02-005-D						100		Low	Low	Low	<input type="checkbox"/>
02-032-25-02-005-E	Trott Brook	2.168	PEMCd	Type 3	Shallow Marsh	60	0.5				
02-032-25-02-005-E	Trott Brook	2.168	PEMB	Type 2	Fresh (Wet) Meadow	40	0.1				
02-032-25-02-005-E						100		Moderate	Low	Moderate	<input type="checkbox"/>
02-032-25-03-004-A	Trott Brook	0.300000	PEMF	Type 4	Deep Marsh	100	0.5				
02-032-25-03-004-A						100		Moderate	Moderate	Moderate	<input type="checkbox"/>
02-032-25-03-004-B	Trott Brook	1.422000	PEMF	Type 4	Deep Marsh	30	0.1				
02-032-25-03-004-B	Trott Brook	1.422000	PEMC	Type 3	Shallow Marsh	70	0.1				
02-032-25-03-004-B						100		Low	Low	Low	<input type="checkbox"/>
02-032-25-03-004-C	Trott Brook	91.45	PEMC	Type 3	Shallow Marsh	100	0.5				
02-032-25-03-004-C						100		Moderate	Moderate	Moderate	<input type="checkbox"/>
02-032-25-03-004-F	Ford Brook	0.400000	PEMA	Type 1	Seasonally Flooded Basin	100	0.1				
02-032-25-03-004-F						100		Low	Low	Low	<input type="checkbox"/>
02-032-25-03-004-G	Ford Brook	0.419	PEMA	Type 1	Seasonally Flooded Basin	100	0.1				
02-032-25-03-004-G						100		Low	Low	Low	<input type="checkbox"/>
02-032-25-03-004-H	Trott Brook	12.78600	PSS1C	Type 6	Shrub Carr	100	0.5				
02-032-25-03-004-H						100		Moderate	Moderate	Moderate	<input type="checkbox"/>
02-032-25-03-004-M	Trott Brook	1.409000	PEMC	Type 3	Shallow Marsh	100	0.5				
02-032-25-03-004-M						100		Moderate	Moderate	Moderate	<input type="checkbox"/>
02-032-25-03-004-N	Ford Brook	0.864000	PEMC	Type 3	Shallow Marsh	100	0.1				
02-032-25-03-004-N						100		Low	Low	Low	<input type="checkbox"/>

* Denotes incomplete calculation data.

Wetland Community Summary City of Ramsey Wetland Inventory

Wetland ID	Subwatershed	Wetland Size (acres)	Vegetative Diversity/Integrity							*	
			Community			Wetland Proportion	Individual Community Rating	Highest Wetland Rating	Average Wetland Rating		Weighted Average Wetland Rating
			Cowardin Classification	Circular 39	Plant Community						
02-032-25-04-003-A	Co Ditch #51	398.6300	PEMF	Type 4	Deep Marsh	14	0.5				
02-032-25-04-003-A	Co Ditch #51	398.6300	PSS1Cd	Type 6	Shrub Carr	16	0.5				
02-032-25-04-003-A	Co Ditch #51	398.6300	PEMC	Type 3	Shallow Marsh	40	0.5				
02-032-25-04-003-A	Co Ditch #51	398.6300	PFO1B	Type 7	Hardwood Swamp	30	0.5				
02-032-25-04-003-A						100		Moderate	Moderate	Moderate	<input type="checkbox"/>
02-032-25-04-003-E	Trott Brook	0.270000	PEMB	Type 2	Fresh (Wet) Meadow	100	0.1				
02-032-25-04-003-E						100					Low
02-032-25-04-003-F	Trott Brook	0.71	PEMC	Type 3	Shallow Marsh	100	0.1				
02-032-25-04-003-F						100					Low
02-032-25-04-003-H	Trott Brook	1.781000	PEMC	Type 3	Shallow Marsh	100	0.5				
02-032-25-04-003-H						100					Moderate
02-032-25-04-003-I	Trott Brook	0.632000	PEMB	Type 2	Sedge Meadow	100	0.5				
02-032-25-04-003-I						100					Moderate
02-032-25-05-002-A	Co Ditch #51	0.26	PEMC	Type 3	Shallow Marsh	100	0.5				
02-032-25-05-002-A						100					Moderate
02-032-25-05-002-B	Co Ditch #51	1.14	PEMB	Type 2	Fresh (Wet) Meadow	100	0.1				
02-032-25-05-002-B						100					Low
02-032-25-05-002-C	Co Ditch #51	0.38	PEMC	Type 3	Shallow Marsh	100	1				
02-032-25-05-002-C						100					High
02-032-25-05-002-G	Co Ditch #51	45.69	PSS1B	Type 6	Shrub Carr	100	0.1				
02-032-25-05-002-G						100					Low
02-032-25-05-002-I	Co Ditch #51	3.09	PFO1B	Type 7	Hardwood Swamp	100	0.5				
02-032-25-05-002-I						100					Moderate
02-032-25-05-002-J	Co Ditch #51	2.5	PFO1B	Type 7	Hardwood Swamp	100	0.1				
02-032-25-05-002-J						100					Low
02-032-25-05-002-K	Co Ditch #51	4.820000	PSS1B	Type 6	Shrub Carr	101	0.1				

* Denotes incomplete calculation data.

Wetland Community Summary City of Ramsey Wetland Inventory

Wetland ID	Subwatershed	Wetland Size (acres)	Vegetative Diversity/Integrity							*	
			Community			Wetland Proportion	Individual Community Rating	Highest Wetland Rating	Average Wetland Rating		Weighted Average Wetland Rating
			Cowardin Classification	Circular 39	Plant Community						
02-032-25-05-002-K						101		Low	Low	Low	<input type="checkbox"/>
02-032-25-06-001-A	Trott Brook	4.87	PEMC	Type 3	Shallow Marsh	54	0.5				
02-032-25-06-001-A	Trott Brook	4.87	PFO1B	Type 7	Hardwood Swamp	46	0.5				
02-032-25-06-001-A						100		Moderate	Moderate	Moderate	<input type="checkbox"/>
02-032-25-06-001-B	Trott Brook	7.690000	PEMB	Type 2	Fresh (Wet) Meadow	100	0.1				
02-032-25-06-001-B						100					
02-032-25-06-001-C	Co Ditch #51	105	PFO1C	Type 7	Hardwood Swamp	42	0.1				
02-032-25-06-001-C	Co Ditch #51	105	PEMCd	Type 3	Shallow Marsh	22	0.1				
02-032-25-06-001-C	Co Ditch #51	105	PEMBd	Type 2	Fresh (Wet) Meadow	32	0.1				
02-032-25-06-001-C						96		Low	Low	Not Applicable	<input type="checkbox"/>
02-032-25-06-001-D	Trott Brook	3.02	PEMC	Type 3	Shallow Marsh	100	0.1				
02-032-25-06-001-D						100					
02-032-25-06-001-E	Trott Brook	0.680000	PEMC	Type 3	Shallow Marsh	100	0.1				
02-032-25-06-001-E						100					
02-032-25-06-001-F	Trott Brook	107.3700	PSS1B	Type 6	Shrub Carr	21	0.5				
02-032-25-06-001-F	Trott Brook	107.3700	PEMB	Type 2	Fresh (Wet) Meadow	77	0.5				
02-032-25-06-001-F						98		Exceptional	Exceptional	Exceptional	<input type="checkbox"/>
02-032-25-06-001-G	Co Ditch #51	0.360000	PEMF	Type 4	Deep Marsh	100	0.1				
02-032-25-06-001-G						100					
02-032-25-07-008-B	Trott Brook	1.490000	PEMF	Type 4	Deep Marsh	100	0.1				
02-032-25-07-008-B						100					
02-032-25-07-008-C	Trott Brook	1.67	PEMF	Type 4	Deep Marsh	50	0				
02-032-25-07-008-C	Trott Brook	1.67	PEMC	Type 3	Shallow Marsh	50	0.5				
02-032-25-07-008-C						100		Moderate	Low	Low	<input type="checkbox"/>
02-032-25-07-008-E	Trott Brook	144.7200	PEMC	Type 3	Shallow Marsh	65	1				
02-032-25-07-008-E	Trott Brook	144.7200	PSS1B	Type 6	Shrub Carr	35	1				

* Denotes incomplete calculation data.

Wetland Community Summary City of Ramsey Wetland Inventory

Wetland ID	Subwatershed	Wetland Size (acres)	Vegetative Diversity/Integrity							*	
			Community			Wetland Proportion	Individual Community Rating	Highest Wetland Rating	Average Wetland Rating		Weighted Average Wetland Rating
			Cowardin Classification	Circular 39	Plant Community						
02-032-25-07-008-E						100		Exceptional	Exceptional	Exceptional	<input type="checkbox"/>
02-032-25-07-008-F	Trott Brook	0.58	PEMF	Type 4	Deep Marsh	100	1				<input type="checkbox"/>
02-032-25-07-008-F						100		Exceptional	Exceptional	Exceptional	<input type="checkbox"/>
02-032-25-07-008-G	Trott Brook	2	PEMC	Type 3	Shallow Marsh	100	1				<input type="checkbox"/>
02-032-25-07-008-G						100		Exceptional	Exceptional	Exceptional	<input type="checkbox"/>
02-032-25-08-009-A	Trott Brook	2	PEMF	Type 4	Deep Marsh	50	0.5				<input type="checkbox"/>
02-032-25-08-009-A	Trott Brook	2	PEMC	Type 3	Shallow Marsh	50	0.5				<input type="checkbox"/>
02-032-25-08-009-A						100		Moderate	Moderate	Moderate	<input type="checkbox"/>
02-032-25-08-009-B	Trott Brook	0.32	PEMB	Type 2	Fresh (Wet) Meadow	100	0.1				<input type="checkbox"/>
02-032-25-08-009-B						100		Low	Low	Low	<input type="checkbox"/>
02-032-25-08-009-D	Co Ditch #51	313.33	PSS1B	Type 6	Shrub Carr	10	0.5				<input type="checkbox"/>
02-032-25-08-009-D	Co Ditch #51	313.33	PFO1B	Type 7	Hardwood Swamp	43	0.1				<input type="checkbox"/>
02-032-25-08-009-D	Co Ditch #51	313.33	PEMB	Type 2	Fresh (Wet) Meadow	30	0.1				<input type="checkbox"/>
02-032-25-08-009-D						83		Moderate	Low	Low	<input type="checkbox"/>
02-032-25-08-009-E	Trott Brook	0.330000	PEMC	Type 3	Shallow Marsh	100	0.1				<input type="checkbox"/>
02-032-25-08-009-E						100		Low	Low	Low	<input type="checkbox"/>
02-032-25-09-010-D	Trott Brook	25.838	PEMC	Type 3	Shallow Marsh	100	0.1				<input type="checkbox"/>
02-032-25-09-010-D						100		Low	Low	Low	<input type="checkbox"/>
02-032-25-09-010-E	Trott Brook	0.29	PEMB	Type 2	Fresh (Wet) Meadow	100	0.1				<input type="checkbox"/>
02-032-25-09-010-E						100		Low	Low	Low	<input type="checkbox"/>
02-032-25-09-010-F	Trott Brook	132.017	PSS1C	Type 6	Shrub Carr	26	0.5				<input type="checkbox"/>
02-032-25-09-010-F	Trott Brook	132.017	PEMCd	Type 3	Shallow Marsh	28	0.1				<input type="checkbox"/>
02-032-25-09-010-F	Trott Brook	132.017	PFO1A	Type 1	Floodplain Forest	56	0.5				<input type="checkbox"/>
02-032-25-09-010-F						110		Moderate	Moderate	Moderate	<input type="checkbox"/>
02-032-25-09-010-J	Trott Brook	0.340000	PEMA	Type 1	Seasonally Flooded Basin	100	0.1				<input type="checkbox"/>
02-032-25-09-010-J						100		Low	Low	Low	<input type="checkbox"/>

* Denotes incomplete calculation data.

Wetland Community Summary City of Ramsey Wetland Inventory

Wetland ID	Subwatershed	Wetland Size (acres)	Vegetative Diversity/Integrity							*	
			Community			Wetland Proportion	Individual Community Rating	Highest Wetland Rating	Average Wetland Rating		Weighted Average Wetland Rating
			Cowardin Classification	Circular 39	Plant Community						
02-032-25-10-011-B	Trott Brook	62.50600	PSS1B	Type 6	Shrub Carr	36	0.5				
02-032-25-10-011-B	Trott Brook	62.50600	PEMC	Type 3	Shallow Marsh	64	0.5				
02-032-25-10-011-B						100		Moderate	Moderate	Moderate	<input type="checkbox"/>
02-032-25-10-011-F	Rum River	1.057000	PEMB	Type 2	Fresh (Wet) Meadow	100	0.1				
02-032-25-10-011-F						100		Low	Low	Low	<input type="checkbox"/>
02-032-25-10-011-G	Trott Brook	1.192000	PEMC	Type 3	Shallow Marsh	76	0.5				
02-032-25-10-011-G						76		Moderate	Moderate	Moderate	<input type="checkbox"/>
02-032-25-11-012-B	Rum River	0.544000	PEMC	Type 3	Shallow Marsh	40	0.5				
02-032-25-11-012-B	Rum River	0.544000	PEMG	Type 4	Deep Marsh	60	0.1				
02-032-25-11-012-B						100		Moderate	Low	Low	<input type="checkbox"/>
02-032-25-11-012-K	Rum River	0.47	PEMB	Type 2	Fresh (Wet) Meadow	100	0.1				
02-032-25-11-012-K						100		Low	Low	Low	<input type="checkbox"/>
02-032-25-11-012-P	Rum River	5.264	PEMCd	Type 3	Shallow Marsh	75	1				
02-032-25-11-012-P	Rum River	5.264	PSS1C	Type 6	Shrub Carr	25	0.5				
02-032-25-11-012-P						100		High	High	High	<input type="checkbox"/>
02-032-25-11-012-Q	Rum River	0.7	PEMB	Type 2	Fresh (Wet) Meadow	100	0.1				
02-032-25-11-012-Q						100		Low	Low	Low	<input type="checkbox"/>
02-032-25-11-012-R	Rum River	1.694000	PEMB	Type 2	Fresh (Wet) Meadow	70	0.1				
02-032-25-11-012-R	Rum River	1.694000	PSS1Cd	Type 6	Shrub Carr	30	0.1				
02-032-25-11-012-R						100		Low	Low	Low	<input type="checkbox"/>
02-032-25-11-012-S	Rum River	0.360000	PEMF	Type 4	Deep Marsh	100	1				
02-032-25-11-012-S						100		High	High	High	<input type="checkbox"/>
02-032-25-11-012-T	Rum River	0.360000	PEMH	Type 4	Deep Marsh	100	0.1				
02-032-25-11-012-T						100		Low	Low	Low	<input type="checkbox"/>
02-032-25-11-012-U	Rum River	0.280000	PEMB	Type 2	Sedge Meadow	100	1				
02-032-25-11-012-U						100		High	High	High	<input type="checkbox"/>

* Denotes incomplete calculation data.

Wetland Community Summary City of Ramsey Wetland Inventory

Wetland ID	Subwatershed	Wetland Size (acres)	Vegetative Diversity/Integrity							*	
			Community			Wetland Proportion	Individual Community Rating	Highest Wetland Rating	Average Wetland Rating		Weighted Average Wetland Rating
			Cowardin Classification	Circular 39	Plant Community						
02-032-25-14-019-F	Rum River	0.427	PEMB	Type 2	Fresh (Wet) Meadow	100	0.1				
02-032-25-14-019-F						100		Low	Low	Low	<input type="checkbox"/>
02-032-25-14-019-I	Rum River	4.145	PEMCd	Type 3	Shallow Marsh	100	0.5				
02-032-25-14-019-I						100		Moderate	Moderate	Moderate	<input type="checkbox"/>
02-032-25-14-019-N	Rum River	2.256000	PEMC	Type 3	Shallow Marsh	100	0.1				
02-032-25-14-019-N						100		Low	Low	Low	<input type="checkbox"/>
02-032-25-15-018-F	Rum River	4.179	PEMB	Type 2	Fresh (Wet) Meadow	100	0.1				
02-032-25-15-018-F						100		Low	Low	Low	<input type="checkbox"/>
02-032-25-15-018-G	Rum River	125.9240	PEMBd	Type 2	Fresh (Wet) Meadow	55	0.1				
02-032-25-15-018-G	Rum River	125.9240	PSS1B	Type 6	Shrub Carr	21	0.1				
02-032-25-15-018-G						76		Low	Low	Not Applicable	<input type="checkbox"/>
02-032-25-16-017-C	Trott Brook	1.56	PFO1B	Type 7	Hardwood Swamp	17	0.1				
02-032-25-16-017-C	Trott Brook	1.56	PEMC	Type 3	Shallow Marsh	71	0.5				
02-032-25-16-017-C						88		Moderate	Low	Moderate	<input type="checkbox"/>
02-032-25-16-017-D	Trott Brook	123.77	PFO1C	Type 7	Hardwood Swamp	20	0.1				
02-032-25-16-017-D	Trott Brook	123.77	PEMCd	Type 3	Shallow Marsh	58	0.5				
02-032-25-16-017-D	Trott Brook	123.77	PEMFd	Type 4	Deep Marsh	22	0.5				
02-032-25-16-017-D						100		Moderate	Moderate	Moderate	<input type="checkbox"/>
02-032-25-16-017-E	Trott Brook	3.6	PEMC	Type 3	Sedge Meadow	100	1				
02-032-25-16-017-E						100		High	High	High	<input type="checkbox"/>
02-032-25-16-017-F	Trott Brook	1.03	PEMC	Type 3	Shallow Marsh	100	1				
02-032-25-16-017-F						100		High	High	High	<input type="checkbox"/>
02-032-25-16-017-H	Trott Brook	0.340000	PEMC	Type 3	Shallow Marsh	100	0.5				
02-032-25-16-017-H						100		Moderate	Moderate	Moderate	<input type="checkbox"/>
02-032-25-17-016-A	Trott Brook	1.870000	PEMB	Type 2	Sedge Meadow	100	1				
02-032-25-17-016-A						100		High	High	High	<input type="checkbox"/>

* Denotes incomplete calculation data.

Wetland Community Summary City of Ramsey Wetland Inventory

Wetland ID	Subwatershed	Wetland Size (acres)	Vegetative Diversity/Integrity							*	
			Community			Wetland Proportion	Individual Community Rating	Highest Wetland Rating	Average Wetland Rating		Weighted Average Wetland Rating
			Cowardin Classification	Circular 39	Plant Community						
02-032-25-17-016-C	Trott Brook	1.850000	PEMC	Type 3	Shallow Marsh	100	1				
02-032-25-17-016-C						100		High	High	High	<input type="checkbox"/>
02-032-25-17-016-D	Trott Brook	9.340000	PEMC	Type 3	Shallow Marsh	90	0.5				
02-032-25-17-016-D						90		Moderate	Moderate	Moderate	<input type="checkbox"/>
02-032-25-17-016-E	Trott Brook	1.26	PEMB	Type 2	Sedge Meadow	100	1				
02-032-25-17-016-E						100		High	High	High	<input type="checkbox"/>
02-032-25-17-016-F	Mississippi River	1.730000	PEMC	Type 3	Shallow Marsh	100	0.5				
02-032-25-17-016-F						100		Moderate	Moderate	Moderate	<input type="checkbox"/>
02-032-25-17-016-H	Mississippi River	1.490000	PEMB	Type 2	Sedge Meadow	100	1				
02-032-25-17-016-H						100		High	High	High	<input type="checkbox"/>
02-032-25-17-016-I	Mississippi River	0.300000	PEMF	Type 4	Deep Marsh	100	0.5				
02-032-25-17-016-I						100		Moderate	Moderate	Moderate	<input type="checkbox"/>
02-032-25-18-015-A	Trott Brook	10.960000	PEMC	Type 3	Shallow Marsh	85	0.5				
02-032-25-18-015-A	Trott Brook	10.960000	PSS1C	Type 6	Shrub Carr	15	0.5				
02-032-25-18-015-A						100		Exceptional	Exceptional	Exceptional	<input type="checkbox"/>
02-032-25-18-015-D	Trott Brook	0.58	PEMC	Type 3	Shallow Marsh	100	1				
02-032-25-18-015-D						100		High	High	High	<input type="checkbox"/>
02-032-25-18-015-E	Trott Brook	0.340000	PEMH	Type 4	Deep Marsh	100	0.5				
02-032-25-18-015-E						100		Moderate	Moderate	Moderate	<input type="checkbox"/>
02-032-25-18-015-F	Trott Brook	0.32	PEMA	Type 1	Seasonally Flooded Basin	100	1				
02-032-25-18-015-F						100		High	High	High	<input type="checkbox"/>
02-032-25-18-015-G	Trott Brook	3.3	PEMC	Type 3	Shallow Marsh	100	0.5				
02-032-25-18-015-G						100		Moderate	Moderate	Moderate	<input type="checkbox"/>
02-032-25-18-015-H	Mississippi River	11.680000	PEMC	Type 3	Shallow Marsh	60	0.5				
02-032-25-18-015-H	Mississippi River	11.680000	PEMF	Type 4	Deep Marsh	40	0.5				
02-032-25-18-015-H						100		Moderate	Moderate	Moderate	<input type="checkbox"/>

* Denotes incomplete calculation data.

Wetland Community Summary City of Ramsey Wetland Inventory

Wetland ID	Subwatershed	Wetland Size (acres)	Vegetative Diversity/Integrity							*	
			Community			Wetland Proportion	Individual Community Rating	Highest Wetland Rating	Average Wetland Rating		Weighted Average Wetland Rating
			Cowardin Classification	Circular 39	Plant Community						
02-032-25-18-015-I	Mississippi River	2.3	PEMC	Type 3	Shallow Marsh	100	0.5				
02-032-25-18-015-I						100		Moderate	Moderate	Moderate	<input type="checkbox"/>
02-032-25-18-015-K	Mississippi River	1.02	PEMH	Type 4	Deep Marsh	100	0.5				
02-032-25-18-015-K						100		Moderate	Moderate	Moderate	<input type="checkbox"/>
02-032-25-18-015-L	Mississippi River	1.06	PEMH	Type 4	Deep Marsh	100	0.5				
02-032-25-18-015-L						100		Moderate	Moderate	Moderate	<input type="checkbox"/>
02-032-25-18-015-M	Mississippi River	0.680000	PEMH	Type 4	Deep Marsh	100	0.5				
02-032-25-18-015-M						100		Moderate	Moderate	Moderate	<input type="checkbox"/>
02-032-25-18-015-O	Trott Brook	1.14	PEMH	Type 4	Deep Marsh	100	0.1				
02-032-25-18-015-O						100		Low	Low	Low	<input type="checkbox"/>
02-032-25-18-015-P	Trott Brook	0.310000	PEMC	Type 3	Shallow Marsh	100	0.5				
02-032-25-18-015-P						100		Exceptional	Exceptional	Exceptional	<input type="checkbox"/>
02-032-25-18-015-Q	Trott Brook	0.340000	PEMH	Type 4	Deep Marsh	100	0.1				
02-032-25-18-015-Q						100		Low	Low	Low	<input type="checkbox"/>
02-032-25-19-022-A	Mississippi River	7.880000	PEMA	Type 1	Seasonally Flooded Basin	100	0.1				
02-032-25-19-022-A						100		Low	Low	Low	<input type="checkbox"/>
02-032-25-19-022-B	Mississippi River	0.26	PEMA	Type 1	Seasonally Flooded Basin	100	0.1				
02-032-25-19-022-B						100		Low	Low	Low	<input type="checkbox"/>
02-032-25-19-022-C	Mississippi River	0.52	PEMC	Type 3	Shallow Marsh	100	0.1				
02-032-25-19-022-C						100		Low	Low	Low	<input type="checkbox"/>
02-032-25-19-022-D	Mississippi River	257.3900	PEMH	Type 5	Shallow, Open Water Communities	45	0.5				
02-032-25-19-022-D	Mississippi River	257.3900	PEMC	Type 3	Shallow Marsh	45	0.5				
02-032-25-19-022-D	Mississippi River	257.3900	PEMF	Type 4	Deep Marsh	10	0.5				
02-032-25-19-022-D						100		Moderate	Moderate	Moderate	<input type="checkbox"/>
02-032-25-19-022-E	Mississippi River	1.360000	PEMB	Type 2	Fresh (Wet) Meadow	100	0.1				

* Denotes incomplete calculation data.

Wetland Community Summary City of Ramsey Wetland Inventory

Wetland ID	Subwatershed	Wetland Size (acres)	Vegetative Diversity/Integrity							*	
			Community			Wetland Proportion	Individual Community Rating	Highest Wetland Rating	Average Wetland Rating		Weighted Average Wetland Rating
			Cowardin Classification	Circular 39	Plant Community						
02-032-25-19-022-E						100		Low	Low	Low	<input type="checkbox"/>
02-032-25-19-022-F	Mississippi River	0.58	PEMH	Type 4	Deep Marsh	100	0.1				<input type="checkbox"/>
02-032-25-19-022-F						100		Low	Low	Low	<input type="checkbox"/>
02-032-25-19-022-G	Mississippi River	0.35	PEMH	Type 4	Deep Marsh	100	0.1				<input type="checkbox"/>
02-032-25-19-022-G						100		Exceptional	Exceptional	Exceptional	<input type="checkbox"/>
02-032-25-19-022-I	Mississippi River	0.57	PUBF	Type 4	Deep Marsh	100	0.1				<input type="checkbox"/>
02-032-25-19-022-I						100		Low	Low	Low	<input type="checkbox"/>
02-032-25-19-022-J	Mississippi River	0.35	PEMC	Type 3	Shallow Marsh	100	0.1				<input type="checkbox"/>
02-032-25-19-022-J						100		Low	Low	Low	<input type="checkbox"/>
02-032-25-20-023-B	Mississippi River	0.29	PEMB	Type 2	Fresh (Wet) Meadow	100	0.5				<input type="checkbox"/>
02-032-25-20-023-B						100		Moderate	Moderate	Moderate	<input type="checkbox"/>
02-032-25-21-024-A	Mississippi River	91.61000	PEMF	Type 4	Deep Marsh	20	0				<input type="checkbox"/>
02-032-25-21-024-A	Mississippi River	91.61000	PEMC	Type 3	Shallow Marsh	80	1				<input type="checkbox"/>
02-032-25-21-024-A						100		High	Moderate	High	<input type="checkbox"/>
02-032-25-21-024-B	Mississippi River	0.32	PEMC	Type 3	Shallow Marsh	100	0.1				<input type="checkbox"/>
02-032-25-21-024-B						100		Low	Low	Low	<input type="checkbox"/>
02-032-25-22-025-B	Rum River	1.64	PEMB	Type 2	Fresh (Wet) Meadow	100	0.1				<input type="checkbox"/>
02-032-25-22-025-B						100		Low	Low	Low	<input type="checkbox"/>
02-032-25-22-025-C	Rum River	0.310000	PEMC	Type 3	Shallow Marsh	100	0.5				<input type="checkbox"/>
02-032-25-22-025-C						100		Moderate	Moderate	Moderate	<input type="checkbox"/>
02-032-25-22-025-D	Rum River	0.52	PEMC	Type 3	Shallow Marsh	100	0.5				<input type="checkbox"/>
02-032-25-22-025-D						100		Moderate	Moderate	Moderate	<input type="checkbox"/>
02-032-25-23-026-J	Rum River	1.56	PEMC	Type 3	Shallow Marsh	100	1				<input type="checkbox"/>
02-032-25-23-026-J						100		High	High	High	<input type="checkbox"/>
02-032-25-23-026-K	Rum River	12.82	PEMC	Type 3	Shallow Marsh	80	0.5				<input type="checkbox"/>
02-032-25-23-026-K	Rum River	12.82	PSS1B	Type 6	Shrub Carr	20	0.5				<input type="checkbox"/>

* Denotes incomplete calculation data.

Wetland Community Summary City of Ramsey Wetland Inventory

Wetland ID	Subwatershed	Wetland Size (acres)	Vegetative Diversity/Integrity							*	
			Community			Wetland Proportion	Individual Community Rating	Highest Wetland Rating	Average Wetland Rating		Weighted Average Wetland Rating
			Cowardin Classification	Circular 39	Plant Community						
02-032-25-23-026-K						100		Moderate	Moderate	Moderate	<input type="checkbox"/>
02-032-25-24-027-O	Rum River	0.83	PEMC	Type 3	Shallow Marsh	100	1				<input type="checkbox"/>
02-032-25-24-027-O						100		High	High	High	<input type="checkbox"/>
02-032-25-25-034-B	Rum River	0.592000	PEMB	Type 2	Sedge Meadow	100	1				<input type="checkbox"/>
02-032-25-25-034-B						100		High	High	High	<input type="checkbox"/>
02-032-25-25-034-H	Rum River	0.414000	PEMC	Type 3	Shallow Marsh	100	0.1				<input type="checkbox"/>
02-032-25-25-034-H						100		Low	Low	Low	<input type="checkbox"/>
02-032-25-26-033-A	Rum River	39.55500	PUBG	Type 4	Deep Marsh	10	0.5				<input type="checkbox"/>
02-032-25-26-033-A	Rum River	39.55500	L1UBH	Type 5	Shallow, Open Water Communities	87	0.5				<input type="checkbox"/>
02-032-25-26-033-A						97		Moderate	Moderate	Moderate	<input type="checkbox"/>
02-032-25-26-033-C	Rum River	162.42	PEMH	Type 5	Shallow, Open Water Communities	20	0.5				<input type="checkbox"/>
02-032-25-26-033-C	Rum River	162.42	PEMC	Type 3	Shallow Marsh	80	0.1				<input type="checkbox"/>
02-032-25-26-033-C						100		Moderate	Low	Low	<input type="checkbox"/>
02-032-25-27-032-F	Mississippi River	6.14	PEMF	Type 4	Deep Marsh	41	0.1				<input type="checkbox"/>
02-032-25-27-032-F	Mississippi River	6.14	PEMC	Type 3	Shallow Marsh	59	0.1				<input type="checkbox"/>
02-032-25-27-032-F						100		Low	Low	Low	<input type="checkbox"/>
02-032-25-27-032-H	Rum River	2.430000	PEMC	Type 3	Shallow Marsh	50	0.5				<input type="checkbox"/>
02-032-25-27-032-H	Rum River	2.430000	PEMF	Type 4	Deep Marsh	50	0.5				<input type="checkbox"/>
02-032-25-27-032-H						100		Moderate	Moderate	Moderate	<input type="checkbox"/>
02-032-25-28-031-B	Mississippi River	4.137000	PEMC	Type 3	Shallow Marsh	100	0.1				<input type="checkbox"/>
02-032-25-28-031-B						100		Low	Low	Low	<input type="checkbox"/>
02-032-25-28-031-C	Mississippi River	10.08	PEMB	Type 2	Fresh (Wet) Meadow	40	0.1				<input type="checkbox"/>
02-032-25-28-031-C	Mississippi River	10.08	PEMC	Type 3	Shallow Marsh	60	0.5				<input type="checkbox"/>
02-032-25-28-031-C						100		Moderate	Low	Moderate	<input type="checkbox"/>

* Denotes incomplete calculation data.

Wetland Community Summary City of Ramsey Wetland Inventory

<i>Wetland ID</i>	<i>Subwatershed</i>	<i>Wetland Size (acres)</i>	<i>Vegetative Diversity/Integrity</i>							<i>Weighted Average Wetland Rating</i>	*
			<i>Community</i>			<i>Wetland Proportion</i>	<i>Individual Community Rating</i>	<i>Highest Wetland Rating</i>	<i>Average Wetland Rating</i>		
			<i>Cowardin Classification</i>	<i>Circular 39</i>	<i>Plant Community</i>						
02-032-25-29-030-C	Mississippi River	1.13	PEMC	Type 3	Shallow Marsh	100	0.5				
02-032-25-29-030-C						100		Moderate	Moderate	Moderate	

** Denotes incomplete calculation data.*

Wetland Functional Assessment Summary

City of Ramsey Wetland Inventory

<i>Wetland ID</i>	<i>Hydrogeomorphology</i>	<i>Hydrologic Regime</i>	<i>Flood Storage</i>	<i>Downstream Water Quality</i>	<i>Wetland Water Quality</i>	<i>Shoreline Protection</i>
02-032-24-06-007-A	Depressional/Flow-through (apparent inlet and outlet), Depressional/Flow-through (apparent inlet and outlet)	High	Moderate	High	High	Moderate
02-032-24-06-007-B	Depressional/Isolated (no discernable inlets or outlets)	High	High	High	High	Not Applicable
02-032-24-06-007-C	Depressional/Isolated (no discernable inlets or outlets)	High	High	High	High	Not Applicable
02-032-24-06-007-D	Depressional/Flow-through (apparent inlet and outlet), Depressional/Flow-through (apparent inlet and outlet)	High	High	High	High	Moderate
02-032-24-06-007-E	Depressional/Isolated (no discernable inlets or outlets)	High	Moderate	High	High	Not Applicable
02-032-24-06-007-F	Depressional/Isolated (no discernable inlets or outlets)	High	High	High	High	Not Applicable
02-032-24-06-007-J	Depressional/Tributary (outlet but no perennial inlet or drainage entering from upstream subwatershed)	High	Moderate	High	High	Not Applicable
02-032-24-06-007-K	Depressional/Flow-through (apparent inlet and outlet), Depressional/Flow-through (apparent inlet and outlet)	High	Moderate	High	High	Not Applicable
02-032-25-00-000-A	Riverine (within the river/stream banks)	High	Moderate	High	Moderate	Moderate
02-032-25-00-000-B	Riverine (within the river/stream banks)	High	Moderate	High	Moderate	Moderate
02-032-25-00-000-C	Riverine (within the river/stream banks), Lacustrine Fringe (edge of deepwater areas)/Shoreland	Moderate	Moderate	Moderate	High	Moderate
02-032-25-00-000-D	Riverine (within the river/stream banks), Floodplain (outside waterbody banks)	Moderate	Moderate	Moderate	Moderate	High
02-032-25-00-000-E	Riverine (within the river/stream banks)	Moderate	Moderate	Moderate	High	Moderate
02-032-25-00-000-F	Riverine (within the river/stream banks)	Moderate	Moderate	Moderate	High	Moderate
02-032-25-00-000-G	Riverine (within the river/stream banks), Floodplain (outside waterbody banks)	Moderate	Moderate	Moderate	Moderate	Moderate
02-032-25-01-006-A	Depressional/Flow-through (apparent inlet and outlet), Depressional/Flow-through (apparent inlet and outlet)	Moderate	Moderate	High	Moderate	Not Applicable
02-032-25-01-006-C	Depressional/Flow-through (apparent inlet and outlet), Depressional/Flow-through (apparent inlet and outlet)	High	Moderate	High	Moderate	Moderate

Wetland Functional Assessment Summary

City of Ramsey Wetland Inventory

Wetland ID	Hydrogeomorphology	Hydrologic Regime	Flood Storage	Downstream Water Quality	Wetland Water Quality	Shoreline Protection
02-032-25-01-006-H	Depressional/Tributary (outlet but no perennial inlet or drainage entering from upstream subwatershed)	Moderate	Moderate	Moderate	Moderate	Not Applicable
02-032-25-01-006-N	Depressional/Isolated (no discernable inlets or outlets)	High	High	High	High	Not Applicable
02-032-25-02-005-A	Depressional/Isolated (no discernable inlets or outlets)	High	High	High	High	Not Applicable
02-032-25-02-005-D	Depressional/Isolated (no discernable inlets or outlets)	High	High	High	Moderate	Not Applicable
02-032-25-02-005-E	Depressional/Isolated (no discernable inlets or outlets)	Moderate	Moderate	High	Moderate	Not Applicable
02-032-25-03-004-A	Depressional/Flow-through (apparent inlet and outlet), Depressional/Flow-through (apparent inlet and outlet)	High	High	High	High	Not Applicable
02-032-25-03-004-B	Depressional/Isolated (no discernable inlets or outlets)	High	High	High	Moderate	Not Applicable
02-032-25-03-004-C	Depressional/Flow-through (apparent inlet and outlet), Depressional/Flow-through (apparent inlet and outlet)	Moderate	Moderate	High	Moderate	Not Applicable
02-032-25-03-004-F	Depressional/Isolated (no discernable inlets or outlets)	Low	Moderate	Moderate	Moderate	Not Applicable
02-032-25-03-004-G	Depressional/Isolated (no discernable inlets or outlets)	Low	Moderate	High	Moderate	Not Applicable
02-032-25-03-004-H	Depressional/Isolated (no discernable inlets or outlets)	Moderate	Moderate	High	High	Not Applicable
02-032-25-03-004-M	Depressional/Tributary (outlet but no perennial inlet or drainage entering from upstream subwatershed)	Moderate	Moderate	High	High	Not Applicable
02-032-25-03-004-N	Depressional/Isolated (no discernable inlets or outlets)	Moderate	High	Moderate	Moderate	Not Applicable
02-032-25-04-003-A	Depressional/Flow-through (apparent inlet and outlet), Depressional/Flow-through (apparent inlet and outlet)	Moderate	Moderate	High	Moderate	Not Applicable
02-032-25-04-003-E	Depressional/Tributary (outlet but no perennial inlet or drainage entering from upstream subwatershed)	High	High	High	Moderate	Not Applicable
02-032-25-04-003-F	Depressional/Isolated (no discernable inlets or outlets)	High	Moderate	High	Moderate	Not Applicable
02-032-25-04-003-H	Depressional/Isolated (no discernable inlets or outlets)	Moderate	Moderate	High	Moderate	Not Applicable
02-032-25-04-003-I	Depressional/Isolated (no discernable inlets or outlets)	High	High	High	High	Not Applicable
02-032-25-05-002-A	Depressional/Isolated (no discernable inlets or outlets)	High	Moderate	High	High	Not Applicable
02-032-25-05-002-B	Depressional/Isolated (no discernable inlets or outlets)	High	Moderate	High	Moderate	Not Applicable
02-032-25-05-002-C	Depressional/Isolated (no discernable inlets or outlets)	High	Moderate	High	High	Not Applicable

Wetland Functional Assessment Summary

City of Ramsey Wetland Inventory

Wetland ID	Hydrogeomorphology	Hydrologic Regime	Flood Storage	Downstream Water Quality	Wetland Water Quality	Shoreline Protection
02-032-25-05-002-G	Depressional/Flow-through (apparent inlet and outlet), Depressional/Flow-through (apparent inlet and outlet)	Moderate	Moderate	High	Moderate	Not Applicable
02-032-25-05-002-I	Depressional/Flow-through (apparent inlet and outlet), Depressional/Flow-through (apparent inlet and outlet)	Moderate	Moderate	High	Moderate	Not Applicable
02-032-25-05-002-J	Depressional/Flow-through (apparent inlet and outlet), Depressional/Flow-through (apparent inlet and outlet)	Moderate	Moderate	High	Moderate	Not Applicable
02-032-25-05-002-K	Depressional/Tributary (outlet but no perennial inlet or drainage entering from upstream subwatershed)	High	High	High	Moderate	Not Applicable
02-032-25-06-001-A	Depressional/Flow-through (apparent inlet and outlet), Depressional/Flow-through (apparent inlet and outlet)	High	High	High	Moderate	Not Applicable
02-032-25-06-001-B	Depressional/Flow-through (apparent inlet and outlet), Depressional/Flow-through (apparent inlet and outlet)	Moderate	Moderate	High	Moderate	Not Applicable
02-032-25-06-001-C	Depressional/Tributary (outlet but no perennial inlet or drainage entering from upstream subwatershed)	Moderate	Moderate	High	Moderate	Not Applicable
02-032-25-06-001-D	Depressional/Isolated (no discernable inlets or outlets)	Moderate	High	Moderate	Low	Not Applicable
02-032-25-06-001-E	Depressional/Isolated (no discernable inlets or outlets)	Moderate	High	Moderate	Low	Not Applicable
02-032-25-06-001-F	Depressional/Flow-through (apparent inlet and outlet), Depressional/Flow-through (apparent inlet and outlet)	High	Moderate	High	Exceptional	Not Applicable
02-032-25-06-001-G	Depressional/Flow-through (apparent inlet and outlet), Depressional/Flow-through (apparent inlet and outlet)	High	Moderate	High	Moderate	Not Applicable
02-032-25-07-008-B	Depressional/Isolated (no discernable inlets or outlets)	High	High	High	Moderate	Not Applicable
02-032-25-07-008-C	Depressional/Isolated (no discernable inlets or outlets)	High	Moderate	High	Moderate	Not Applicable
02-032-25-07-008-E	Depressional/Flow-through (apparent inlet and outlet), Depressional/Flow-through (apparent inlet and outlet)	Moderate	Moderate	High	Exceptional	Moderate
02-032-25-07-008-F	Depressional/Tributary (outlet but no perennial inlet or drainage entering from upstream subwatershed)	High	High	High	Exceptional	Not Applicable
02-032-25-07-008-G	Depressional/Flow-through (apparent inlet and outlet), Depressional/Flow-through (apparent inlet and outlet)	High	High	High	Exceptional	Not Applicable

Wetland Functional Assessment Summary

City of Ramsey Wetland Inventory

Wetland ID	Hydrogeomorphology	Hydrologic Regime	Flood Storage	Downstream Water Quality	Wetland Water Quality	Shoreline Protection
02-032-25-08-009-A	Depressional/Isolated (no discernable inlets or outlets)	High	Moderate	High	High	Not Applicable
02-032-25-08-009-B	Depressional/Isolated (no discernable inlets or outlets)	Moderate	Moderate	High	Moderate	Not Applicable
02-032-25-08-009-D	Depressional/Flow-through (apparent inlet and outlet), Depressional/Flow-through (apparent inlet and outlet)	Moderate	Moderate	High	Moderate	Moderate
02-032-25-08-009-E	Depressional/Isolated (no discernable inlets or outlets)	High	High	High	Moderate	Not Applicable
02-032-25-09-010-D	Depressional/Isolated (no discernable inlets or outlets)	High	Moderate	High	Moderate	Not Applicable
02-032-25-09-010-E	Depressional/Isolated (no discernable inlets or outlets)	High	High	High	Moderate	Not Applicable
02-032-25-09-010-F	Depressional/Flow-through (apparent inlet and outlet), Depressional/Flow-through (apparent inlet and outlet)	Moderate	High	Moderate	Moderate	Moderate
02-032-25-09-010-J	Depressional/Isolated (no discernable inlets or outlets)	High	Moderate	High	Moderate	Not Applicable
02-032-25-10-011-B	Depressional/Flow-through (apparent inlet and outlet), Depressional/Flow-through (apparent inlet and outlet)	Moderate	High	Moderate	Moderate	Moderate
02-032-25-10-011-F	Depressional/Isolated (no discernable inlets or outlets)	Moderate	Moderate	Moderate	Moderate	Not Applicable
02-032-25-10-011-G	Depressional/Isolated (no discernable inlets or outlets)	Moderate	Moderate	Moderate	Moderate	Not Applicable
02-032-25-11-012-B	Depressional/Isolated (no discernable inlets or outlets)	Moderate	High	High	Moderate	Not Applicable
02-032-25-11-012-K	Depressional/Isolated (no discernable inlets or outlets)	Moderate	High	Moderate	Moderate	Not Applicable
02-032-25-11-012-P	Depressional/Isolated (no discernable inlets or outlets)	High	High	High	High	Not Applicable
02-032-25-11-012-Q	Depressional/Isolated (no discernable inlets or outlets)	High	High	High	Moderate	Not Applicable
02-032-25-11-012-R	Depressional/Isolated (no discernable inlets or outlets)	High	High	High	Moderate	Not Applicable
02-032-25-11-012-S	Depressional/Isolated (no discernable inlets or outlets)	High	Moderate	High	High	Not Applicable
02-032-25-11-012-T	Depressional/Isolated (no discernable inlets or outlets)	Moderate	High	High	Moderate	Not Applicable
02-032-25-11-012-U	Depressional/Isolated (no discernable inlets or outlets)	High	High	High	High	Not Applicable
02-032-25-14-019-F	Depressional/Isolated (no discernable inlets or outlets)	High	Moderate	High	Moderate	Not Applicable
02-032-25-14-019-I	Depressional/Isolated (no discernable inlets or outlets)	High	High	High	Moderate	Not Applicable
02-032-25-14-019-N	Depressional/Isolated (no discernable inlets or outlets)	Moderate	High	High	Moderate	Not Applicable
02-032-25-15-018-F	Depressional/Flow-through (apparent inlet and outlet), Depressional/Flow-through (apparent inlet and outlet)	Moderate	Moderate	Moderate	Moderate	Not Applicable

Wetland Functional Assessment Summary

City of Ramsey Wetland Inventory

Wetland ID	Hydrogeomorphology	Hydrologic Regime	Flood Storage	Downstream Water Quality	Wetland Water Quality	Shoreline Protection
02-032-25-15-018-G	Depressional/Flow-through (apparent inlet and outlet), Depressional/Flow-through (apparent inlet and outlet)	Moderate	Moderate	Moderate	Low	Not Applicable
02-032-25-16-017-C	Depressional/Isolated (no discernable inlets or outlets)	High	High	High	Moderate	Not Applicable
02-032-25-16-017-D	Depressional/Flow-through (apparent inlet and outlet), Depressional/Flow-through (apparent inlet and outlet)	Moderate	Moderate	High	Moderate	Not Applicable
02-032-25-16-017-E	Depressional/Isolated (no discernable inlets or outlets)	High	Moderate	High	High	Not Applicable
02-032-25-16-017-F	Depressional/Tributary (outlet but no perennial inlet or drainage entering from upstream subwatershed)	High	High	High	High	Not Applicable
02-032-25-16-017-H	Depressional/Isolated (no discernable inlets or outlets)	High	High	High	High	Not Applicable
02-032-25-17-016-A	Depressional/Isolated (no discernable inlets or outlets)	High	Moderate	High	High	Not Applicable
02-032-25-17-016-C	Depressional/Tributary (outlet but no perennial inlet or drainage entering from upstream subwatershed)	High	Moderate	High	High	Not Applicable
02-032-25-17-016-D	Depressional/Isolated (no discernable inlets or outlets)	High	Moderate	High	Moderate	Not Applicable
02-032-25-17-016-E	Depressional/Tributary (outlet but no perennial inlet or drainage entering from upstream subwatershed)	High	High	High	High	Not Applicable
02-032-25-17-016-F	Depressional/Isolated (no discernable inlets or outlets)	High	High	High	High	Not Applicable
02-032-25-17-016-H	Depressional/Isolated (no discernable inlets or outlets)	Moderate	High	High	High	Not Applicable
02-032-25-17-016-I	Depressional/Isolated (no discernable inlets or outlets)	High	High	High	High	Not Applicable
02-032-25-18-015-A	Depressional/Isolated (no discernable inlets or outlets)	Moderate	High	High	High	Not Applicable
02-032-25-18-015-D	Depressional/Isolated (no discernable inlets or outlets)	High	Moderate	High	High	Not Applicable
02-032-25-18-015-E	Depressional/Isolated (no discernable inlets or outlets)	High	Moderate	High	Moderate	Not Applicable
02-032-25-18-015-F	Depressional/Isolated (no discernable inlets or outlets)	High	High	High	High	Not Applicable
02-032-25-18-015-G	Depressional/Isolated (no discernable inlets or outlets)	High	Moderate	High	High	Not Applicable
02-032-25-18-015-H	Depressional/Isolated (no discernable inlets or outlets)	High	High	High	Moderate	Not Applicable
02-032-25-18-015-I	Depressional/Isolated (no discernable inlets or outlets)	High	Moderate	High	High	Not Applicable
02-032-25-18-015-K	Depressional/Isolated (no discernable inlets or outlets)	High	Moderate	High	Moderate	Not Applicable
02-032-25-18-015-L	Depressional/Isolated (no discernable inlets or outlets)	High	Moderate	High	Moderate	Not Applicable

Wetland Functional Assessment Summary

City of Ramsey Wetland Inventory

Wetland ID	Hydrogeomorphology	Hydrologic Regime	Flood Storage	Downstream Water Quality	Wetland Water Quality	Shoreline Protection
02-032-25-18-015-M	Depressional/Isolated (no discernable inlets or outlets)	High	Moderate	High	High	Not Applicable
02-032-25-18-015-O	Depressional/Isolated (no discernable inlets or outlets)	Moderate	High	Moderate	Moderate	Not Applicable
02-032-25-18-015-P	Depressional/Isolated (no discernable inlets or outlets)	High	High	High	High	Not Applicable
02-032-25-18-015-Q	Depressional/Isolated (no discernable inlets or outlets)	High	High	High	Moderate	Not Applicable
02-032-25-19-022-A	Depressional/Tributary (outlet but no perennial inlet or drainage entering from upstream subwatershed)	Low	Moderate	Moderate	Moderate	Not Applicable
02-032-25-19-022-B	Depressional/Isolated (no discernable inlets or outlets)	Moderate	High	High	Moderate	Not Applicable
02-032-25-19-022-C	Depressional/Isolated (no discernable inlets or outlets)	Moderate	Moderate	Moderate	Low	Not Applicable
02-032-25-19-022-D	Depressional/Isolated (no discernable inlets or outlets)	High	High	High	Moderate	Moderate
02-032-25-19-022-E	Depressional/Isolated (no discernable inlets or outlets)	High	High	High	Moderate	Not Applicable
02-032-25-19-022-F	Depressional/Isolated (no discernable inlets or outlets)	Moderate	High	Moderate	Moderate	Not Applicable
02-032-25-19-022-G	Depressional/Isolated (no discernable inlets or outlets)	Moderate	High	Moderate	High	Not Applicable
02-032-25-19-022-I	Depressional/Isolated (no discernable inlets or outlets)	Moderate	High	Moderate	Moderate	Not Applicable
02-032-25-19-022-J	Depressional/Isolated (no discernable inlets or outlets)	Moderate	High	Moderate	Low	Not Applicable
02-032-25-20-023-B	Depressional/Isolated (no discernable inlets or outlets)	High	High	High	High	Not Applicable
02-032-25-21-024-A	Depressional/Isolated (no discernable inlets or outlets)	High	High	High	High	Not Applicable
02-032-25-21-024-B	Depressional/Isolated (no discernable inlets or outlets)	Moderate	High	Moderate	Low	Not Applicable
02-032-25-22-025-B	Depressional/Tributary (outlet but no perennial inlet or drainage entering from upstream subwatershed)	Moderate	High	High	Moderate	Not Applicable
02-032-25-22-025-C	Depressional/Isolated (no discernable inlets or outlets)	Moderate	Moderate	High	Moderate	Not Applicable
02-032-25-22-025-D	Depressional/Isolated (no discernable inlets or outlets)	Moderate	Moderate	High	High	Not Applicable
02-032-25-23-026-J	Depressional/Isolated (no discernable inlets or outlets)	High	High	High	High	Not Applicable
02-032-25-23-026-K	Depressional/Isolated (no discernable inlets or outlets)	High	High	High	Moderate	Not Applicable
02-032-25-24-027-O	Depressional/Tributary (outlet but no perennial inlet or drainage entering from upstream subwatershed)	High	High	High	High	Not Applicable
02-032-25-25-034-B	Depressional/Tributary (outlet but no perennial inlet or drainage entering from upstream subwatershed)	High	High	High	High	Not Applicable

***Wetland Functional Assessment Summary
City of Ramsey Wetland Inventory***

<i>Wetland ID</i>	<i>Hydrogeomorphology</i>	<i>Hydrologic Regime</i>	<i>Flood Storage</i>	<i>Downstream Water Quality</i>	<i>Wetland Water Quality</i>	<i>Shoreline Protection</i>
02-032-25-25-034-H	Depressional/Tributary (outlet but no perennial inlet or drainage entering from upstream subwatershed)	Moderate	Moderate	Moderate	Moderate	Not Applicable
02-032-25-26-033-A	Depressional/Isolated (no discernable inlets or outlets)	High	High	High	Moderate	Moderate
02-032-25-26-033-C	Depressional/Isolated (no discernable inlets or outlets)	Moderate	Moderate	Moderate	Moderate	Low
02-032-25-27-032-F	Depressional/Tributary (outlet but no perennial inlet or drainage entering from upstream subwatershed)	Moderate	Moderate	High	Moderate	Not Applicable
02-032-25-27-032-H	Depressional/Isolated (no discernable inlets or outlets)	Moderate	High	Moderate	Moderate	Not Applicable
02-032-25-28-031-B	Depressional/Isolated (no discernable inlets or outlets)	High	Moderate	High	Moderate	Not Applicable
02-032-25-28-031-C	Depressional/Isolated (no discernable inlets or outlets)	High	Moderate	High	Moderate	Not Applicable
02-032-25-29-030-C	Depressional/Isolated (no discernable inlets or outlets)	High	High	High	Moderate	Not Applicable

***Wetland Functional Assessment Summary
City of Ramsey Wetland Inventory***

							<i>Additional Information</i>		
<i>Wetland ID</i>	<i>Wildlife Habitat</i>	<i>Fishery Habitat</i>	<i>Amphibian Habitat</i>	<i>Aesthetics, Recreation, Education</i>	<i>Commercial</i>	<i>Ground-Water Interaction</i>	<i>Wetland Restoration Potential</i>	<i>Wetland Stormwater Sensitivity</i>	<i>Stormwater Treatment Needs</i>
02-032-24-06-007-A	High	Low	Low	Moderate	Not Applicable	Combination Discharge, Recharge	Not Applicable	Moderate	High
02-032-24-06-007-B	Moderate	Not Applicable	Not Applicable	Exceptional	Not Applicable	Recharge	Not Applicable	High	High
02-032-24-06-007-C	Moderate	Not Applicable	Not Applicable	Exceptional	Not Applicable	Recharge	Not Applicable	High	High
02-032-24-06-007-D	High	High	Low	Exceptional	Not Applicable	Combination Discharge, Recharge	Not Applicable	Moderate	High
02-032-24-06-007-E	Moderate	Moderate	Moderate	Exceptional	Not Applicable	Recharge	Not Applicable	Moderate	High
02-032-24-06-007-F	Moderate	Not Applicable	Not Applicable	Exceptional	Not Applicable	Recharge	Not Applicable	Moderate	High
02-032-24-06-007-J	High	Not Applicable	Moderate	Exceptional	Not Applicable	Combination Discharge, Recharge	Not Applicable	Moderate	High
02-032-24-06-007-K	High	Not Applicable	Moderate	Exceptional	Not Applicable	Combination Discharge, Recharge	Not Applicable	Moderate	High
02-032-25-00-000-A	Moderate	High	Low	Exceptional	Not Applicable	Combination Discharge, Recharge	Not Applicable	Moderate	Moderate
02-032-25-00-000-B	High	High	Low	Moderate	Not Applicable	Combination Discharge, Recharge	Not Applicable	Exceptional	Moderate

***Wetland Functional Assessment Summary
City of Ramsey Wetland Inventory***

							<i>Additional Information</i>		
<i>Wetland ID</i>	<i>Wildlife Habitat</i>	<i>Fishery Habitat</i>	<i>Amphibian Habitat</i>	<i>Aesthetics, Recreation, Education</i>	<i>Commercial</i>	<i>Ground-Water Interaction</i>	<i>Wetland Restoration Potential</i>	<i>Wetland Stormwater Sensitivity</i>	<i>Stormwater Treatment Needs</i>
02-032-25-00-000-C	High	High	Low	Exceptional	Not Applicable	Combination Discharge, Recharge	Not Applicable	Moderate	High
02-032-25-00-000-D	Moderate	High	Low	Exceptional	Not Applicable	Combination Discharge, Recharge	Not Applicable	Moderate	Moderate
02-032-25-00-000-E	High	High	Low	High	Not Applicable	Combination Discharge, Recharge	Not Applicable	Moderate	High
02-032-25-00-000-F	High	High	Low	High	Not Applicable	Combination Discharge, Recharge	Not Applicable	Moderate	High
02-032-25-00-000-G	High	High	Low	High	Not Applicable	Combination Discharge, Recharge	Not Applicable	Moderate	Moderate
02-032-25-01-006-A	High	Moderate	Low	Moderate	Not Applicable	Combination Discharge, Recharge	Not Applicable	High	Moderate
02-032-25-01-006-C	High	Low	Low	Moderate	Not Applicable	Combination Discharge, Recharge	Not Applicable	Moderate	Moderate
02-032-25-01-006-H	Moderate	Low	Low	Moderate	Not Applicable	Recharge	Not Applicable	High	Moderate
02-032-25-01-006-N	Moderate	Low	High	Moderate	Not Applicable	Recharge	Not Applicable	Moderate	High
02-032-25-02-005-A	Moderate	Not Applicable	Not Applicable	Moderate	Not Applicable	Recharge	Not Applicable	Moderate	High
02-032-25-02-005-D	Moderate	Low	Moderate	Moderate	Not Applicable	Recharge	Not Applicable	Moderate	Moderate
02-032-25-02-005-E	Moderate	Not Applicable	Moderate	Moderate	Not Applicable	Recharge	Not Applicable	Moderate	Moderate

***Wetland Functional Assessment Summary
City of Ramsey Wetland Inventory***

							<i>Additional Information</i>		
<i>Wetland ID</i>	<i>Wildlife Habitat</i>	<i>Fishery Habitat</i>	<i>Amphibian Habitat</i>	<i>Aesthetics, Recreation, Education</i>	<i>Commercial</i>	<i>Ground-Water Interaction</i>	<i>Wetland Restoration Potential</i>	<i>Wetland Stormwater Sensitivity</i>	<i>Stormwater Treatment Needs</i>
02-032-25-03-004-A	Moderate	Not Applicable	Moderate	Moderate	Not Applicable	Combination Discharge, Recharge	Not Applicable	Moderate	High
02-032-25-03-004-B	Moderate	Low	Moderate	Moderate	Not Applicable	Combination Discharge, Recharge	Not Applicable	Moderate	Moderate
02-032-25-03-004-C	Moderate	Low	Moderate	Moderate	Not Applicable	Combination Discharge, Recharge	Not Applicable	Moderate	Moderate
02-032-25-03-004-F	Moderate	Not Applicable	Not Applicable	Low	Not Applicable	Combination Discharge, Recharge	Not Applicable	Exceptional	Moderate
02-032-25-03-004-G	Moderate	Not Applicable	Not Applicable	Moderate	Not Applicable	Recharge	Not Applicable	Exceptional	Moderate
02-032-25-03-004-H	Moderate	Not Applicable	Not Applicable	Moderate	Not Applicable	Combination Discharge, Recharge	Not Applicable	High	High
02-032-25-03-004-M	Moderate	Low	Low	Moderate	Not Applicable	Combination Discharge, Recharge	Low	Moderate	High
02-032-25-03-004-N	Moderate	Low	Low	Low	Not Applicable	Combination Discharge, Recharge	Moderate	Moderate	Moderate
02-032-25-04-003-A	Moderate	Low	Low	Moderate	Not Applicable	Discharge	Not Applicable	Moderate	Moderate
02-032-25-04-003-E	Moderate	Not Applicable	Not Applicable	Moderate	Not Applicable	Recharge	Not Applicable	Moderate	Moderate
02-032-25-04-003-F	Moderate	Not Applicable	Not Applicable	Moderate	Not Applicable	Recharge	Not Applicable	Moderate	Moderate
02-032-25-04-003-H	Moderate	Low	Moderate	Moderate	Not Applicable	Recharge	Low	Moderate	Moderate

***Wetland Functional Assessment Summary
City of Ramsey Wetland Inventory***

							<i>Additional Information</i>		
<i>Wetland ID</i>	<i>Wildlife Habitat</i>	<i>Fishery Habitat</i>	<i>Amphibian Habitat</i>	<i>Aesthetics, Recreation, Education</i>	<i>Commercial</i>	<i>Ground-Water Interaction</i>	<i>Wetland Restoration Potential</i>	<i>Wetland Stormwater Sensitivity</i>	<i>Stormwater Treatment Needs</i>
02-032-25-04-003-I	Moderate	Not Applicable	Not Applicable	Moderate	Not Applicable	Combination Discharge, Recharge	Not Applicable	Exceptional	High
02-032-25-05-002-A	Moderate	Not Applicable	Moderate	Moderate	Not Applicable	Recharge	Not Applicable	Moderate	High
02-032-25-05-002-B	Moderate	Not Applicable	Not Applicable	Low	Not Applicable	Recharge	Not Applicable	Moderate	Moderate
02-032-25-05-002-C	High	Not Applicable	Not Applicable	Exceptional	Not Applicable	Recharge	Not Applicable	High	High
02-032-25-05-002-G	Moderate	Not Applicable	Not Applicable	High	Not Applicable	Combination Discharge, Recharge	Not Applicable	High	Moderate
02-032-25-05-002-I	Moderate	Not Applicable	Not Applicable	Moderate	Not Applicable	Combination Discharge, Recharge	Not Applicable	Exceptional	Moderate
02-032-25-05-002-J	Moderate	Not Applicable	Not Applicable	Moderate	Not Applicable	Combination Discharge, Recharge	Low	Exceptional	Moderate
02-032-25-05-002-K	Moderate	Not Applicable	Not Applicable	Moderate	Not Applicable	Combination Discharge, Recharge	Not Applicable	High	Moderate
02-032-25-06-001-A	Moderate	Not Applicable	Not Applicable	Moderate	Not Applicable	Combination Discharge, Recharge	Not Applicable	Moderate	Moderate
02-032-25-06-001-B	Moderate	Not Applicable	Not Applicable	Moderate	Not Applicable	Combination Discharge, Recharge	Not Applicable	Moderate	Moderate
02-032-25-06-001-C	Moderate	Low	Moderate	Moderate	Not Applicable	Combination Discharge, Recharge	Not Applicable	Exceptional	Moderate

***Wetland Functional Assessment Summary
City of Ramsey Wetland Inventory***

							<i>Additional Information</i>		
<i>Wetland ID</i>	<i>Wildlife Habitat</i>	<i>Fishery Habitat</i>	<i>Amphibian Habitat</i>	<i>Aesthetics, Recreation, Education</i>	<i>Commercial</i>	<i>Ground-Water Interaction</i>	<i>Wetland Restoration Potential</i>	<i>Wetland Stormwater Sensitivity</i>	<i>Stormwater Treatment Needs</i>
02-032-25-06-001-D	Moderate	Low	Not Applicable	Moderate	Not Applicable	Combination Discharge, Recharge	Not Applicable	Moderate	Low
02-032-25-06-001-E	Moderate	Low	Not Applicable	Moderate	Not Applicable	Combination Discharge, Recharge	Not Applicable	Moderate	Low
02-032-25-06-001-F	Exceptional	Not Applicable	Not Applicable	Moderate	Not Applicable	Combination Discharge, Recharge	Not Applicable	Moderate	Exceptional
02-032-25-06-001-G	Moderate	Not Applicable	Moderate	Moderate	Not Applicable	Combination Discharge, Recharge	Not Applicable	Moderate	Moderate
02-032-25-07-008-B	Moderate	Not Applicable	Low	Moderate	Not Applicable	Combination Discharge, Recharge	Not Applicable	Moderate	Moderate
02-032-25-07-008-C	Moderate	Low	High	Moderate	Not Applicable	Combination Discharge, Recharge	Not Applicable	Moderate	Moderate
02-032-25-07-008-E	Exceptional	High	Low	Exceptional	Not Applicable	Combination Discharge, Recharge	Moderate	High	Exceptional
02-032-25-07-008-F	Exceptional	Not Applicable	High	Moderate	Not Applicable	Combination Discharge, Recharge	Not Applicable	High	Exceptional
02-032-25-07-008-G	Exceptional	Not Applicable	Not Applicable	Moderate	Not Applicable	Combination Discharge, Recharge	Not Applicable	High	Exceptional

***Wetland Functional Assessment Summary
City of Ramsey Wetland Inventory***

							<i>Additional Information</i>		
<i>Wetland ID</i>	<i>Wildlife Habitat</i>	<i>Fishery Habitat</i>	<i>Amphibian Habitat</i>	<i>Aesthetics, Recreation, Education</i>	<i>Commercial</i>	<i>Ground-Water Interaction</i>	<i>Wetland Restoration Potential</i>	<i>Wetland Stormwater Sensitivity</i>	<i>Stormwater Treatment Needs</i>
02-032-25-08-009-A	Moderate	Low	Moderate	Moderate	Not Applicable	Combination Discharge, Recharge	Not Applicable	Moderate	High
02-032-25-08-009-B	Moderate	Not Applicable	Moderate	Low	Not Applicable	Recharge	Moderate	Moderate	Moderate
02-032-25-08-009-D	Moderate	Moderate	Low	High	Not Applicable	Combination Discharge, Recharge	Not Applicable	High	Moderate
02-032-25-08-009-E	Moderate	Not Applicable	Not Applicable	Moderate	Not Applicable	Recharge	Not Applicable	Moderate	Moderate
02-032-25-09-010-D	Moderate	Not Applicable	Not Applicable	Moderate	Not Applicable	Combination Discharge, Recharge	Not Applicable	Moderate	Moderate
02-032-25-09-010-E	Moderate	Not Applicable	Not Applicable	Moderate	Not Applicable	Recharge	Not Applicable	Moderate	Moderate
02-032-25-09-010-F	Moderate	Low	Low	High	Not Applicable	Combination Discharge, Recharge	Not Applicable	Moderate	Moderate
02-032-25-09-010-J	Moderate	Not Applicable	Not Applicable	Moderate	Not Applicable	Recharge	Not Applicable	Exceptional	Moderate
02-032-25-10-011-B	Moderate	Moderate	Low	High	Not Applicable	Recharge	Not Applicable	High	Moderate
02-032-25-10-011-F	Moderate	Not Applicable	Not Applicable	Moderate	Not Applicable	Recharge	Moderate	Moderate	Moderate
02-032-25-10-011-G	Moderate	Not Applicable	Low	Moderate	Not Applicable	Recharge	Not Applicable	Moderate	Moderate
02-032-25-11-012-B	High	Low	Moderate	Moderate	Not Applicable	Recharge	Not Applicable	Moderate	Moderate
02-032-25-11-012-K	Moderate	Not Applicable	Not Applicable	Moderate	Not Applicable	Recharge	Not Applicable	Moderate	Moderate
02-032-25-11-012-P	Moderate	Not Applicable	Low	Moderate	Not Applicable	Recharge	Not Applicable	High	High
02-032-25-11-012-Q	Moderate	Not Applicable	Not Applicable	Moderate	Not Applicable	Recharge	Not Applicable	Moderate	Moderate
02-032-25-11-012-R	Moderate	Not Applicable	Low	Moderate	Not Applicable	Recharge	Not Applicable	Moderate	Moderate
02-032-25-11-012-S	High	Not Applicable	Moderate	Exceptional	Not Applicable	Combination Discharge, Recharge	Not Applicable	High	High

***Wetland Functional Assessment Summary
City of Ramsey Wetland Inventory***

							<i>Additional Information</i>		
<i>Wetland ID</i>	<i>Wildlife Habitat</i>	<i>Fishery Habitat</i>	<i>Amphibian Habitat</i>	<i>Aesthetics, Recreation, Education</i>	<i>Commercial</i>	<i>Ground-Water Interaction</i>	<i>Wetland Restoration Potential</i>	<i>Wetland Stormwater Sensitivity</i>	<i>Stormwater Treatment Needs</i>
02-032-25-11-012-T	Moderate	Not Applicable	Low	Low	Not Applicable	Combination Discharge, Recharge	Not Applicable	Moderate	Moderate
02-032-25-11-012-U	High	Moderate	Moderate	Moderate	Not Applicable	Combination Discharge, Recharge	Not Applicable	Exceptional	High
02-032-25-14-019-F	Moderate	Not Applicable	Not Applicable	Moderate	Not Applicable	Recharge	Not Applicable	Moderate	Moderate
02-032-25-14-019-I	Moderate	Not Applicable	Moderate	Moderate	Not Applicable	Recharge	Not Applicable	Moderate	Moderate
02-032-25-14-019-N	Moderate	Not Applicable	Low	Moderate	Not Applicable	Combination Discharge, Recharge	Not Applicable	Moderate	Moderate
02-032-25-15-018-F	Moderate	Not Applicable	Moderate	Moderate	Not Applicable	Combination Discharge, Recharge	Low	Moderate	Moderate
02-032-25-15-018-G	Moderate	Low	Low	Moderate	Not Applicable	Combination Discharge, Recharge	Low	Moderate	Low
02-032-25-16-017-C	Moderate	Not Applicable	Low	Moderate	Not Applicable	Recharge	Low	Moderate	Moderate
02-032-25-16-017-D	Moderate	Low	Low	Moderate	Not Applicable	Combination Discharge, Recharge	Not Applicable	Moderate	Moderate
02-032-25-16-017-E	High	Not Applicable	Not Applicable	Moderate	Not Applicable	Combination Discharge, Recharge	Not Applicable	Exceptional	High
02-032-25-16-017-F	High	Not Applicable	Not Applicable	Moderate	Not Applicable	Combination Discharge, Recharge	Not Applicable	High	High
02-032-25-16-017-H	Moderate	Low	High	Moderate	Not Applicable	Recharge	Not Applicable	Moderate	High

***Wetland Functional Assessment Summary
City of Ramsey Wetland Inventory***

							<i>Additional Information</i>		
<i>Wetland ID</i>	<i>Wildlife Habitat</i>	<i>Fishery Habitat</i>	<i>Amphibian Habitat</i>	<i>Aesthetics, Recreation, Education</i>	<i>Commercial</i>	<i>Ground-Water Interaction</i>	<i>Wetland Restoration Potential</i>	<i>Wetland Stormwater Sensitivity</i>	<i>Stormwater Treatment Needs</i>
02-032-25-17-016-A	Moderate	Not Applicable	Not Applicable	Exceptional	Not Applicable	Combination Discharge, Recharge	Not Applicable	Exceptional	High
02-032-25-17-016-C	High	Not Applicable	Moderate	Moderate	Not Applicable	Combination Discharge, Recharge	Not Applicable	High	High
02-032-25-17-016-D	Moderate	Not Applicable	Moderate	Low	Not Applicable	Combination Discharge, Recharge	Not Applicable	Moderate	Moderate
02-032-25-17-016-E	High	Not Applicable	Moderate	Moderate	Not Applicable	Recharge	Not Applicable	Exceptional	High
02-032-25-17-016-F	Moderate	Not Applicable	High	Moderate	Not Applicable	Recharge	Not Applicable	Moderate	High
02-032-25-17-016-H	High	Not Applicable	Not Applicable	Moderate	Not Applicable	Recharge	Not Applicable	Exceptional	High
02-032-25-17-016-I	Moderate	Low	Moderate	Moderate	Not Applicable	Combination Discharge, Recharge	Not Applicable	Moderate	High
02-032-25-18-015-A	Exceptional	Not Applicable	Moderate	Moderate	Not Applicable	Combination Discharge, Recharge	Not Applicable	Moderate	High
02-032-25-18-015-D	High	Not Applicable	Not Applicable	Moderate	Not Applicable	Recharge	Not Applicable	High	High
02-032-25-18-015-E	High	Not Applicable	Moderate	Moderate	Not Applicable	Combination Discharge, Recharge	Not Applicable	Moderate	Moderate
02-032-25-18-015-F	Moderate	Not Applicable	Not Applicable	Moderate	Not Applicable	Recharge	Not Applicable	Exceptional	High
02-032-25-18-015-G	Moderate	Not Applicable	Moderate	Moderate	Not Applicable	Combination Discharge, Recharge	Not Applicable	Moderate	High

***Wetland Functional Assessment Summary
City of Ramsey Wetland Inventory***

							<i>Additional Information</i>		
<i>Wetland ID</i>	<i>Wildlife Habitat</i>	<i>Fishery Habitat</i>	<i>Amphibian Habitat</i>	<i>Aesthetics, Recreation, Education</i>	<i>Commercial</i>	<i>Ground-Water Interaction</i>	<i>Wetland Restoration Potential</i>	<i>Wetland Stormwater Sensitivity</i>	<i>Stormwater Treatment Needs</i>
02-032-25-18-015-H	Moderate	Not Applicable	Low	Moderate	Not Applicable	Combination Discharge, Recharge	Not Applicable	Moderate	Moderate
02-032-25-18-015-I	Moderate	Not Applicable	Moderate	Moderate	Not Applicable	Combination Discharge, Recharge	Not Applicable	Moderate	High
02-032-25-18-015-K	Moderate	Low	High	Moderate	Not Applicable	Combination Discharge, Recharge	Not Applicable	Moderate	Moderate
02-032-25-18-015-L	Moderate	Low	Moderate	Moderate	Not Applicable	Combination Discharge, Recharge	Not Applicable	Moderate	Moderate
02-032-25-18-015-M	Moderate	Low	Moderate	Moderate	Not Applicable	Combination Discharge, Recharge	Not Applicable	Moderate	High
02-032-25-18-015-O	Moderate	Low	Low	Moderate	Not Applicable	Combination Discharge, Recharge	Not Applicable	Moderate	Moderate
02-032-25-18-015-P	Exceptional	Not Applicable	Low	Moderate	Not Applicable	Recharge	Not Applicable	Moderate	High
02-032-25-18-015-Q	Moderate	Low	Low	Moderate	Not Applicable	Combination Discharge, Recharge	Not Applicable	Moderate	Moderate
02-032-25-19-022-A	Low	Not Applicable	Not Applicable	Low	Low	Recharge	Moderate	Exceptional	Moderate
02-032-25-19-022-B	Moderate	Not Applicable	Not Applicable	Moderate	Not Applicable	Recharge	Not Applicable	Exceptional	Moderate
02-032-25-19-022-C	Moderate	Not Applicable	Low	Moderate	Not Applicable	Recharge	Not Applicable	Moderate	Low
02-032-25-19-022-D	Moderate	Low	Moderate	High	Not Applicable	Combination Discharge, Recharge	Not Applicable	Moderate	Moderate

***Wetland Functional Assessment Summary
City of Ramsey Wetland Inventory***

							<i>Additional Information</i>		
<i>Wetland ID</i>	<i>Wildlife Habitat</i>	<i>Fishery Habitat</i>	<i>Amphibian Habitat</i>	<i>Aesthetics, Recreation, Education</i>	<i>Commercial</i>	<i>Ground-Water Interaction</i>	<i>Wetland Restoration Potential</i>	<i>Wetland Stormwater Sensitivity</i>	<i>Stormwater Treatment Needs</i>
02-032-25-19-022-E	Moderate	Not Applicable	Not Applicable	Moderate	Not Applicable	Recharge	Not Applicable	Moderate	Moderate
02-032-25-19-022-F	Moderate	Low	Low	Moderate	Not Applicable	Combination Discharge, Recharge	Not Applicable	Moderate	Moderate
02-032-25-19-022-G	High	Moderate	Low	Moderate	Not Applicable	Combination Discharge, Recharge	Not Applicable	Moderate	High
02-032-25-19-022-I	Moderate	Low	Low	Moderate	Not Applicable	Recharge	Not Applicable	Moderate	Moderate
02-032-25-19-022-J	Moderate	Not Applicable	Not Applicable	Moderate	Not Applicable	Recharge	Not Applicable	Moderate	Low
02-032-25-20-023-B	Moderate	Not Applicable	Not Applicable	Moderate	Not Applicable	Recharge	Not Applicable	Moderate	High
02-032-25-21-024-A	Moderate	Low	Low	Exceptional	Not Applicable	Combination Discharge, Recharge	Not Applicable	Moderate	High
02-032-25-21-024-B	Moderate	Low	Low	Moderate	Not Applicable	Recharge	Not Applicable	Moderate	Low
02-032-25-22-025-B	Moderate	Not Applicable	Not Applicable	Moderate	Not Applicable	Recharge	Low	Moderate	Moderate
02-032-25-22-025-C	Moderate	Not Applicable	Not Applicable	Low	Not Applicable	Recharge	Not Applicable	Moderate	Moderate
02-032-25-22-025-D	Moderate	Not Applicable	Not Applicable	Low	Not Applicable	Recharge	Not Applicable	Moderate	High
02-032-25-23-026-J	High	Not Applicable	Not Applicable	Moderate	Not Applicable	Combination Discharge, Recharge	Not Applicable	High	High
02-032-25-23-026-K	Moderate	Low	Moderate	High	Not Applicable	Combination Discharge, Recharge	Not Applicable	High	Moderate
02-032-25-24-027-O	High	Not Applicable	Not Applicable	Moderate	Not Applicable	Recharge	Not Applicable	High	High
02-032-25-25-034-B	Moderate	Not Applicable	Not Applicable	Moderate	Not Applicable	Combination Discharge, Recharge	Not Applicable	Exceptional	High

Wetland Functional Assessment Summary

City of Ramsey Wetland Inventory

							<i>Additional Information</i>		
<i>Wetland ID</i>	<i>Wildlife Habitat</i>	<i>Fishery Habitat</i>	<i>Amphibian Habitat</i>	<i>Aesthetics, Recreation, Education</i>	<i>Commercial</i>	<i>Ground-Water Interaction</i>	<i>Wetland Restoration Potential</i>	<i>Wetland Stormwater Sensitivity</i>	<i>Stormwater Treatment Needs</i>
02-032-25-25-034-H	Moderate	Low	Low	Moderate	Not Applicable	Recharge	Not Applicable	Moderate	Moderate
02-032-25-26-033-A	Moderate	Low	Moderate	High	Not Applicable	Combination Discharge, Recharge	Not Applicable	Moderate	Moderate
02-032-25-26-033-C	Moderate	Low	Low	Moderate	Not Applicable	Combination Discharge, Recharge	Not Applicable	Moderate	Moderate
02-032-25-27-032-F	Moderate	Low	Low	Moderate	Not Applicable	Combination Discharge, Recharge	Not Applicable	Moderate	Moderate
02-032-25-27-032-H	Moderate	Low	Low	Moderate	Not Applicable	Combination Discharge, Recharge	Not Applicable	Moderate	Moderate
02-032-25-28-031-B	Moderate	Low	Moderate	Moderate	Not Applicable	Combination Discharge, Recharge	Not Applicable	Moderate	Moderate
02-032-25-28-031-C	Moderate	Low	Low	Moderate	Not Applicable	Combination Discharge, Recharge	Not Applicable	Moderate	Moderate
02-032-25-29-030-C	Moderate	Low	Moderate	Low	Not Applicable	Recharge	Not Applicable	Moderate	Moderate