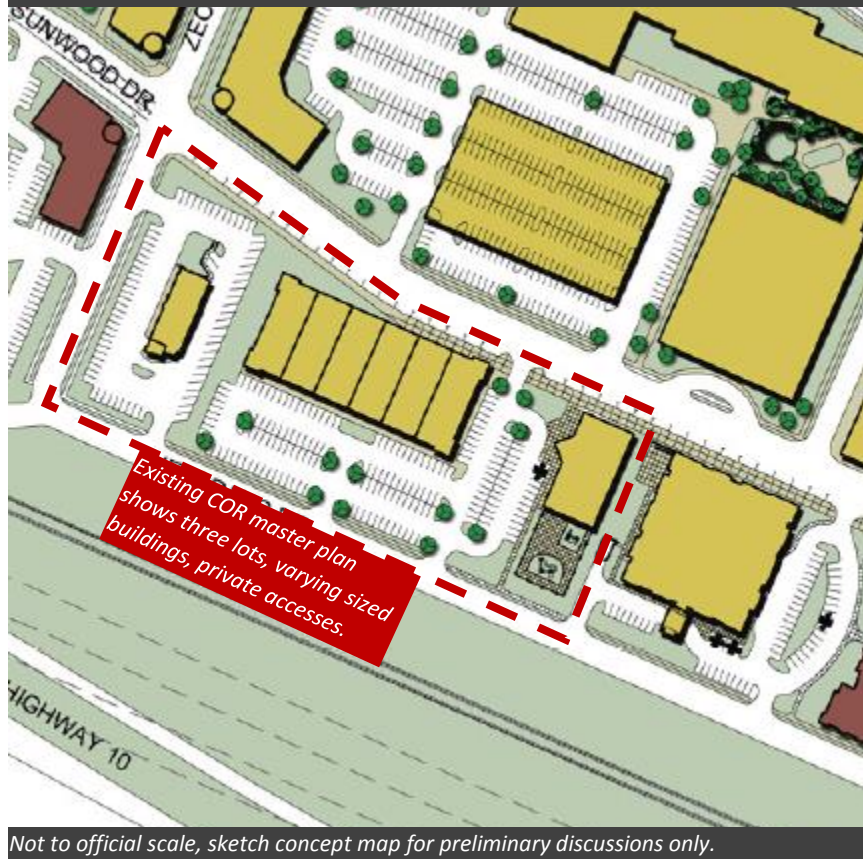


EXAMPLE 1: Stone Brook 1-acre site just west of Yolite (public road connection)

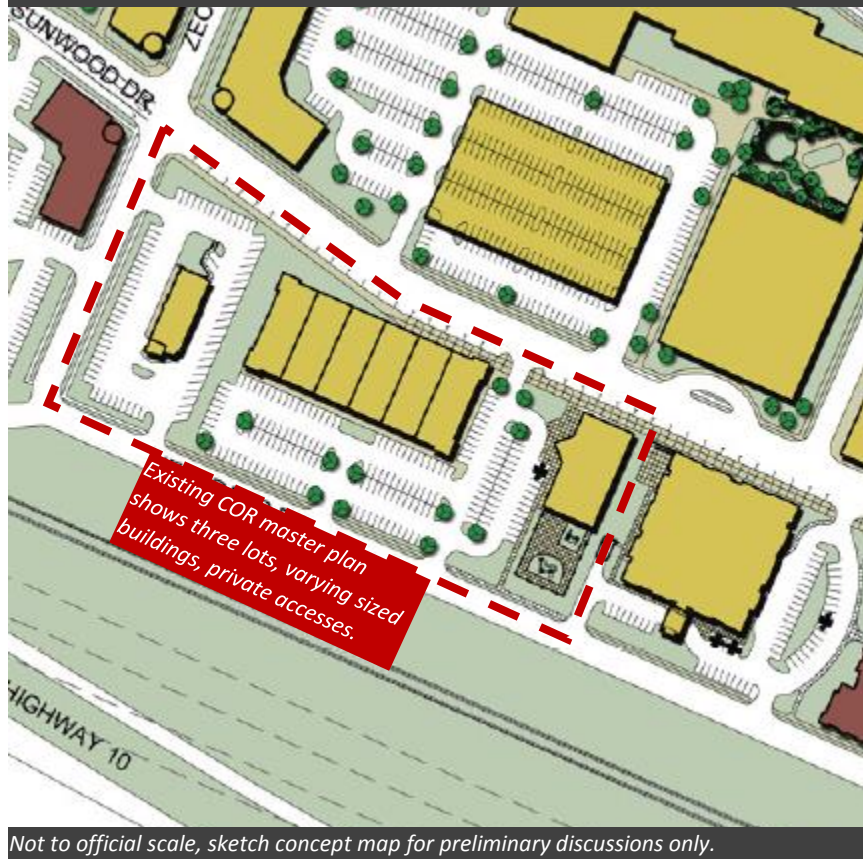


Not to official scale, sketch concept map for preliminary discussions only.

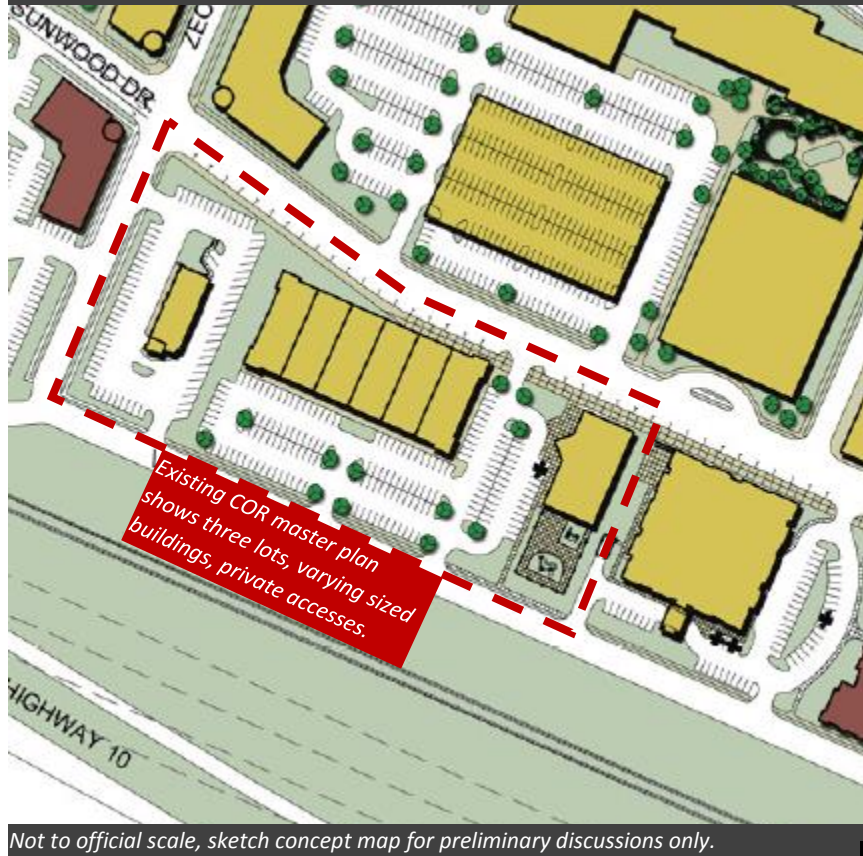


- about 2.9 Acre Site
about 30-45K sf bldg
- about 1 Acre Site
about 10-12K sf bldg
- about .5 Acre Site
about 4-8K sf bldg

EXAMPLE 2: Stone Brook 1-acre site just west of Yolite (private road stub)



EXAMPLE 3: Stone Brook 1-acre site just west of Yolite (public road connection), and two buildings on west lot



Not to official scale, sketch concept map for preliminary discussions only.



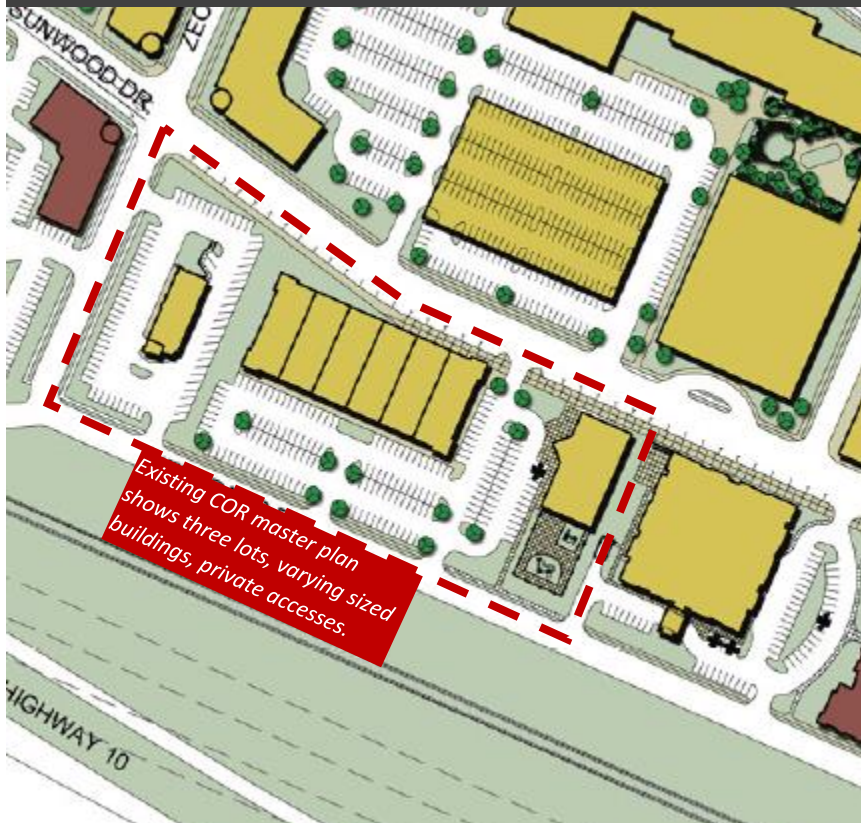
about 1.7 Acre Site
about 15-25K sf bldg

about 1.2 Acre Site
about 15-20K sf bldg

about 1 Acre Site
about 10-12K sf bldg

about .5 Acre Site
about 4-8K sf bldg

EXAMPLE 4: No Stone Brook, one master developer, Yolite (public road connection), and two buildings on west lot



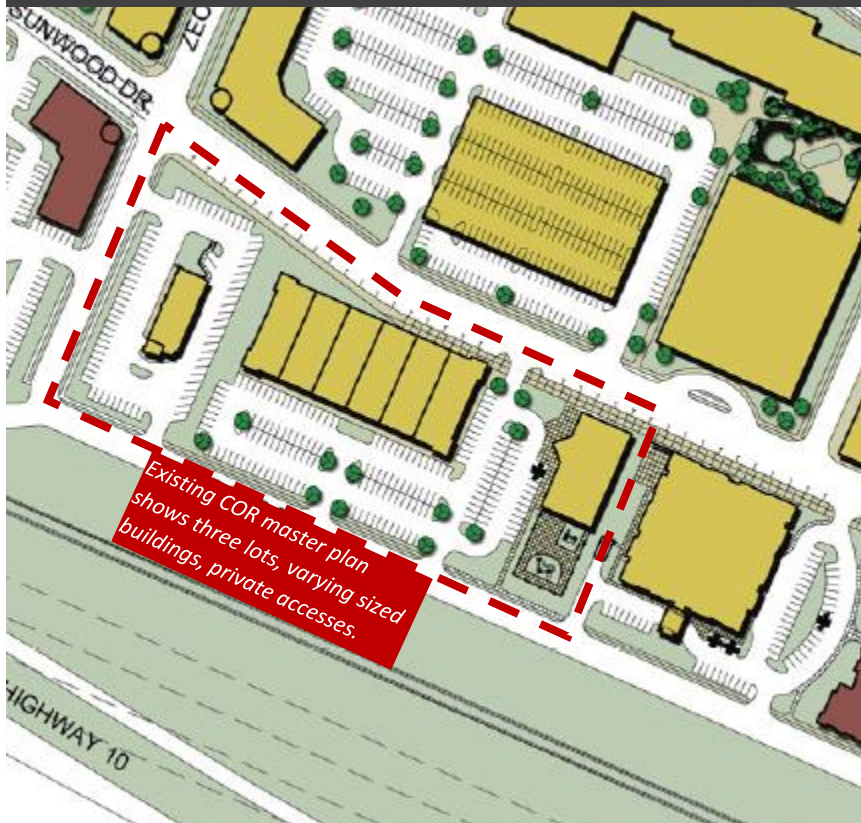
Not to official scale, sketch concept map for preliminary discussions only.



about 4 Acre Site
about 30-40K sf per bldg

about .5 Acre Site
about 4-8K sf bldg

EXAMPLE 5: No Stone Brook, one master developer, Yolite (private accesses only), and two buildings on west lot



Existing COR master plan shows three lots, varying sized buildings, private accesses.

Not to official scale, sketch concept map for preliminary discussions only.



about 4 Acre Site
about 30-40K sf per bldg

about .5 Acre Site
about 4-8K sf bldg