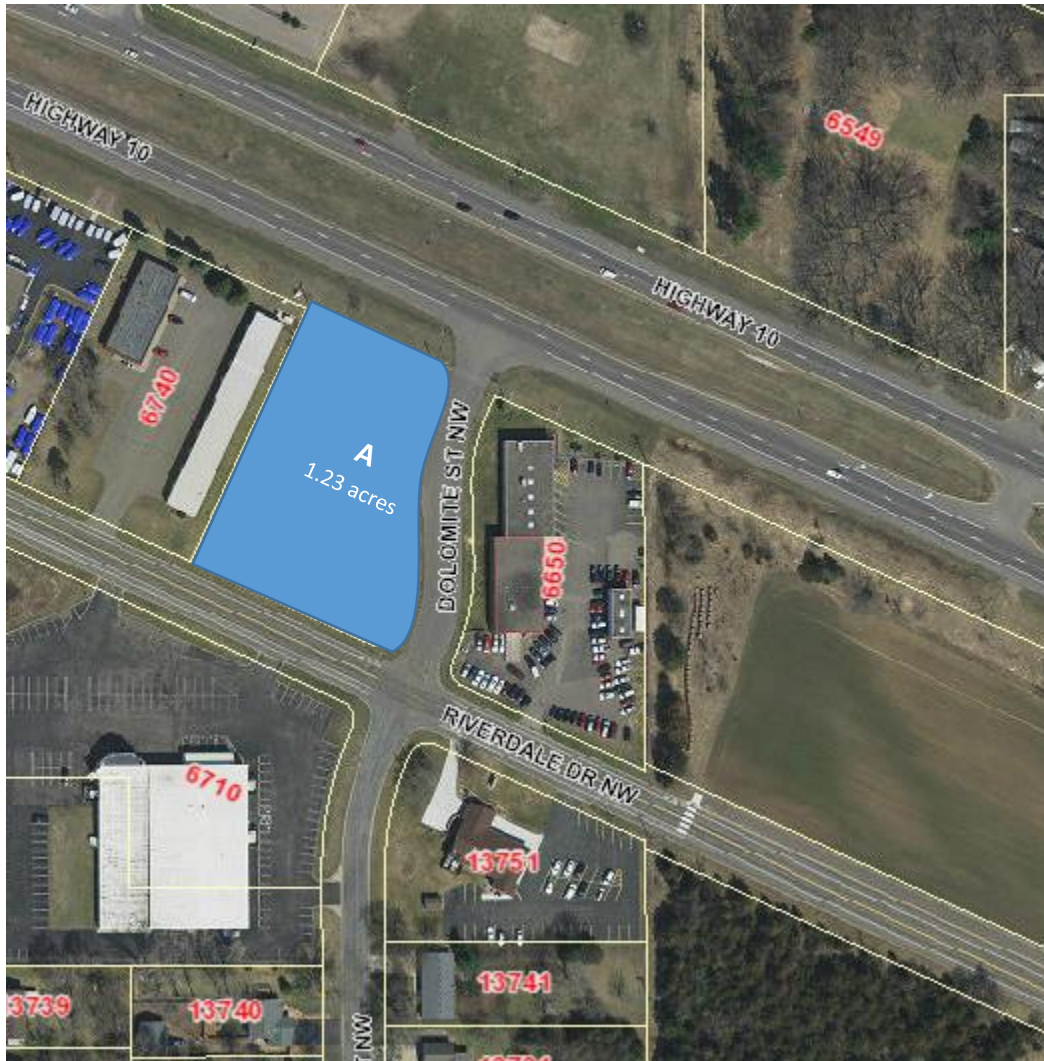


Stone Brook Academy
(previously known as Prestmore Academy)
Site Selection Log

SITE 8
12/30/2016

SITE 8



Site 8 is about 1.23 acres. This is owned by the City, and within the price range of Stone Brook. This site is located off Highway 10/ Dolomite Street, and has great visibility. This site is not located within The COR. This site is located adjacent to an existing businesses significant outside storage.

(1) Stone Brook Feedback

- Stone Brook has indicated they have reviewed this site, and it is not appropriately located (within The COR, near center of The COR). They are not okay with the neighboring uses. They do not desire to further investigate.

(2) Staff Feedback

- NA—due to Stone Brook not willing to consider site.

(3) EDA Feedback

- TBD, XXXXXXXXXXXXXXXX
- TBD, XXXXXXXXXXXXXXXX
- TBD, XXXXXXXXXXXXXXXX

(4) Planning Commission Feedback

- TBD, XXXXXXXXXXXXXXXX
- TBD, XXXXXXXXXXXXXXXX
- TBD, XXXXXXXXXXXXXXXX