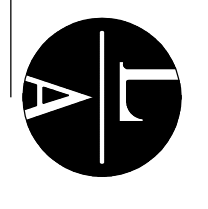


**SITE DATA**  
 LOT 1 - 206,429 S.F. = 4.74 ACRES  
 LOT 2 - 110,221 S.F. = 2.53 ACRES  
 LOT 3 - 88,830 S.F. = 2.04 ACRES  
**ZONING** - E-3, EMPLOYMENT DISTRICT  
**BUILDINGS**  
 INDUSTRIAL SPEC. - 52,088 S.F.  
**PARKING DATA**  
 BUILDING - INDUSTRIAL  
 OFFICE (30%) 19,626 S.F. AT 1,200 S.F. = 52 STALLS  
 WAREHOUSE (70%) 36,462 S.F. AT 1,000 S.F. = 36 STALLS  
 88 STALLS REQUIRED  
 112 STALLS PROVIDED

1 SITE PLAN  
 AT SCALE: 1" = 40'-0"  
 NORTH



**LAMPERTS ARCHITECTS**  
 420 Summit Avenue  
 St. Paul, MN 55103  
 Phone: 612.751.1211 Fax: 612.757.2889  
 lampert@lampert-arch.com

**ARCHITECT CERTIFICATION:**  
 I HEREBY CERTIFY THAT THIS PLAN, SPECIFICATION OR REPORT WAS PREPARED BY ME OR UNDER MY DIRECT SUPERVISION AND THAT I AM A LICENSED ARCHITECT UNDER THE LAWS OF THE STATE OF MINNESOTA.

**PRELIMINARY FOR CONSTRUCTION**  
 SHEET NO. 13669  
 LAMPERT ARCHITECTS  
 SHOPP & ASSOCIATES, LLC

**SA**  
 500 Bunker Lake Blvd  
 Anoka, MN 55303  
 Ph: (763) 425-2002  
 Fax: (763) 425-6428

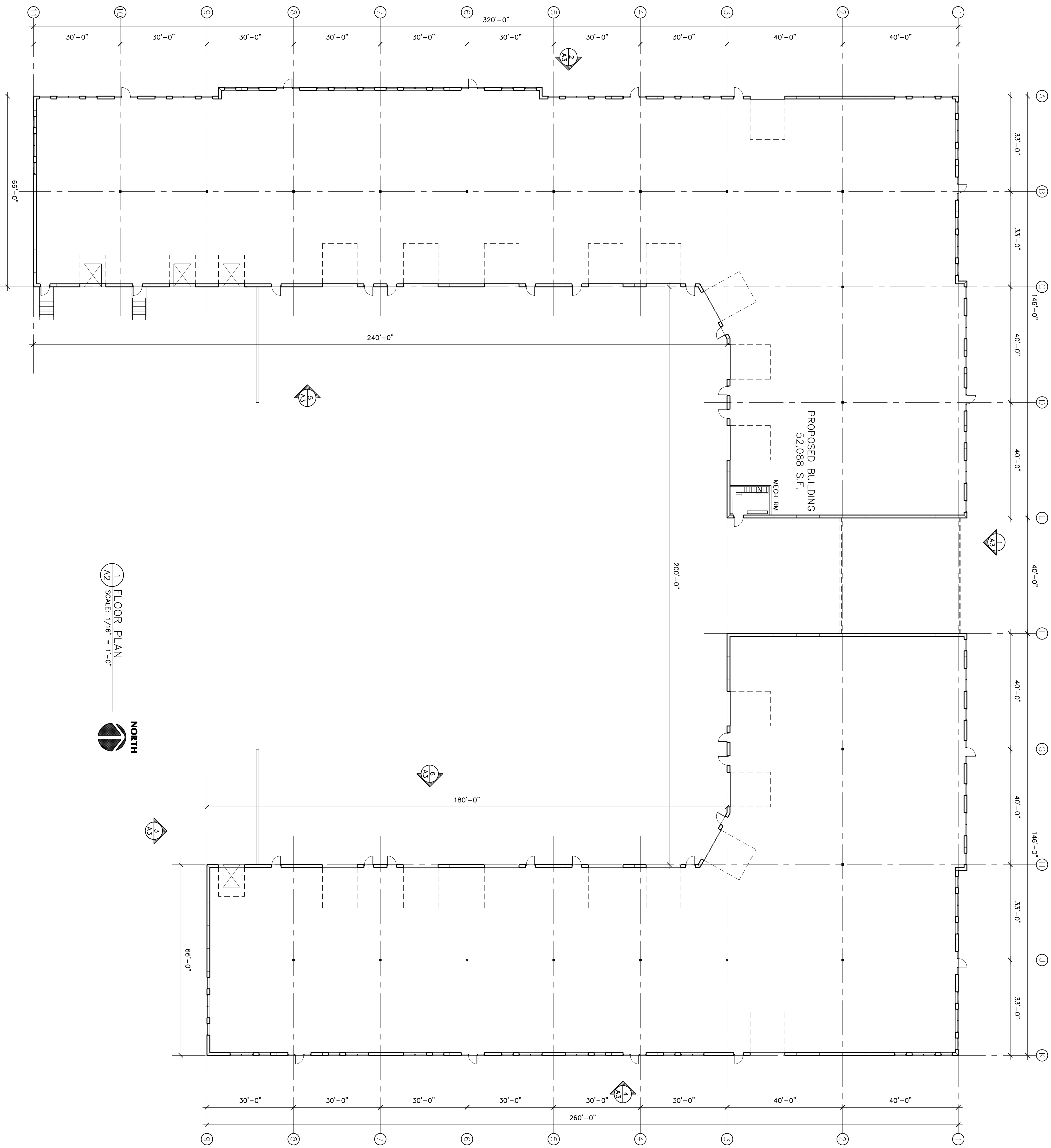
**JASPER INDUSTRIAL PARK**  
 Ramsey, Minnesota

Copyright 2017  
 Leonard Lampert Architects, P.A.  
 Project Designer: JAMES B  
 Drawn By: JRB  
 Checked By: LL  
 Revisions

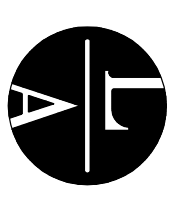
5/31/17	PRELIMINARY

**SITE PLAN**  
 Sheet Number

**A1**  
 Project No. 170418-2



1 FLOOR PLAN  
A2 SCALE: 1/16" = 1'-0"  
NORTH



**LAMPERT ARCHITECTS**  
420 Summit Avenue  
St. Paul, MN 55102  
Phone: 651.225.1411 Fax: 651.297.2849  
http://www.lampert-arch.com

**ARCHITECT CERTIFICATION:**  
I, LEONARD LAMPERT, ARCHITECT, P.E., M.A.S.,  
PREPARED BY ME OR UNDER MY DIRECT  
SUPERVISION AND THAT I AM A DULY  
LICENSED ARCHITECT UNDER THE  
LAWS OF THE STATE OF MINNESOTA.

**PRELIMINARY FOR CONSTRUCTION**

Sharp & Associates, LLC



500 Boulder Lake Blvd  
Ply (763) 425-2002  
Anoka, MN 55303  
Fax (763) 425-6428

**JASPER INDUSTRIAL BUILDING**  
Ramsey, Minnesota

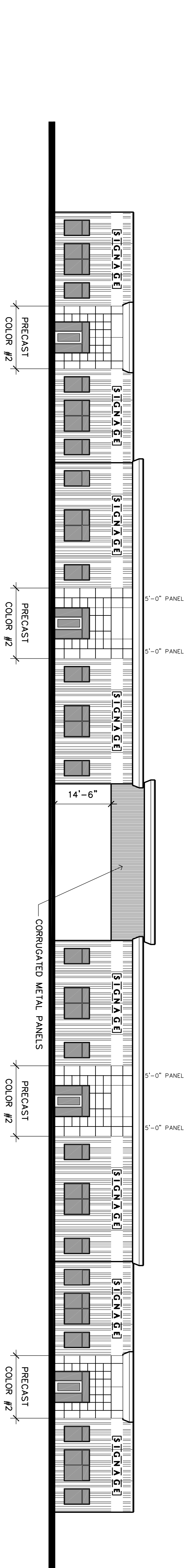
Copyright 2017  
Lampert Architect, P.A.  
Project Designer: JAMES B  
Drawn By: AE  
Checked By: LL  
Revisions  
5/31/17 PRELIMINARY

FLOOR PLAN

Sheet Number

**A2**

Project No. 170418-2



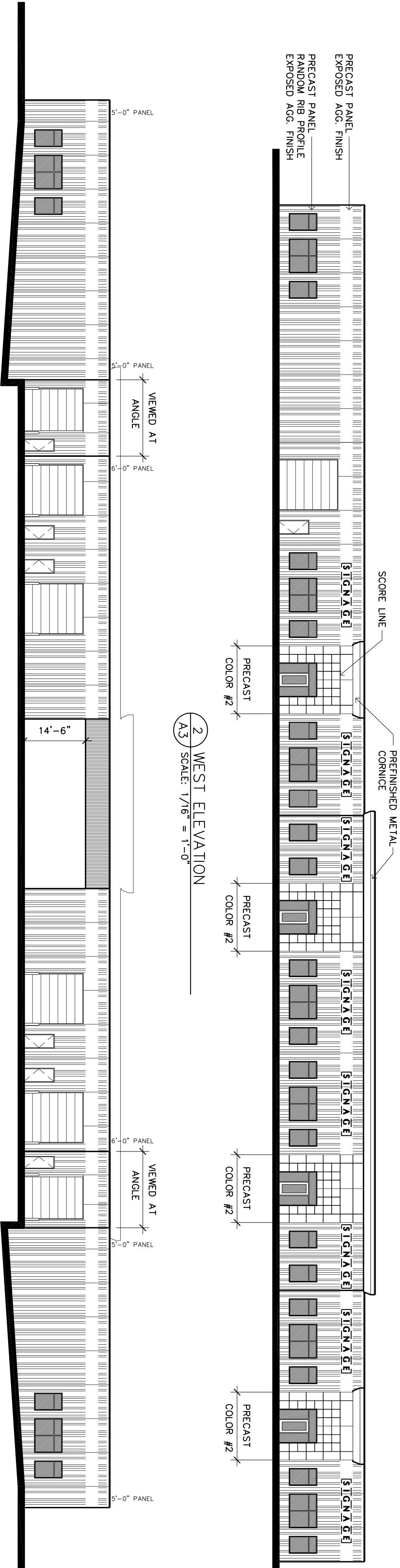
1 NORTH ELEVATION  
A3 SCALE: 1/16" = 1'-0"

TOP OF PRECAST  
EL. = 120'-0"  
(16'-0" CLEAR)

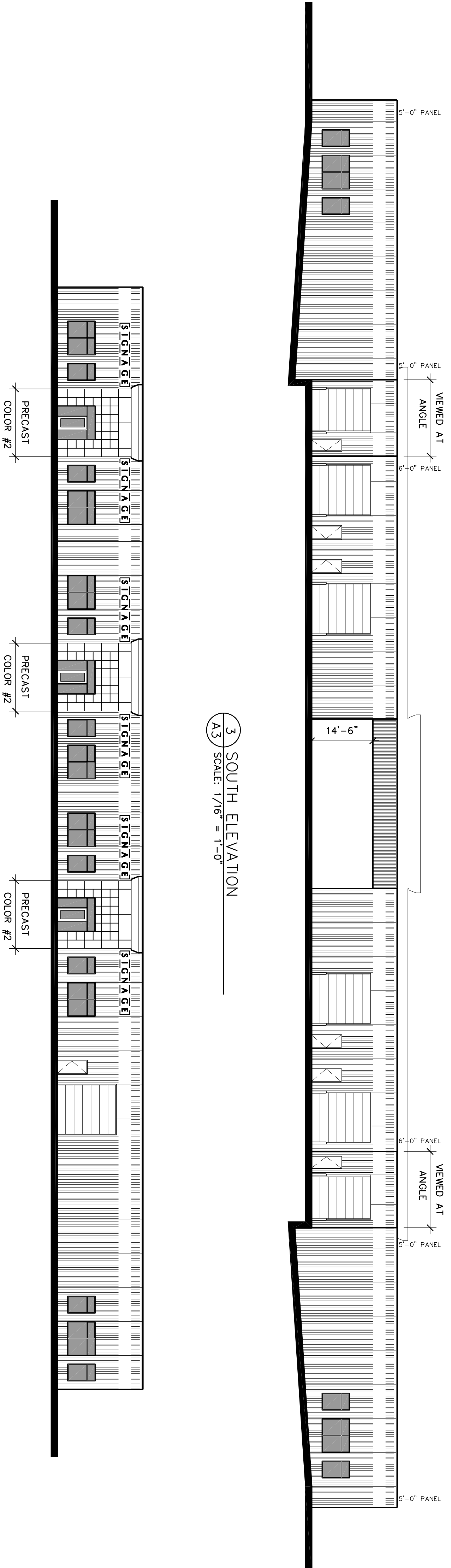
FINISHED FLOOR  
EL. = 100'-0"

PRECAST PANEL  
EXPOSED AGG. FINISH

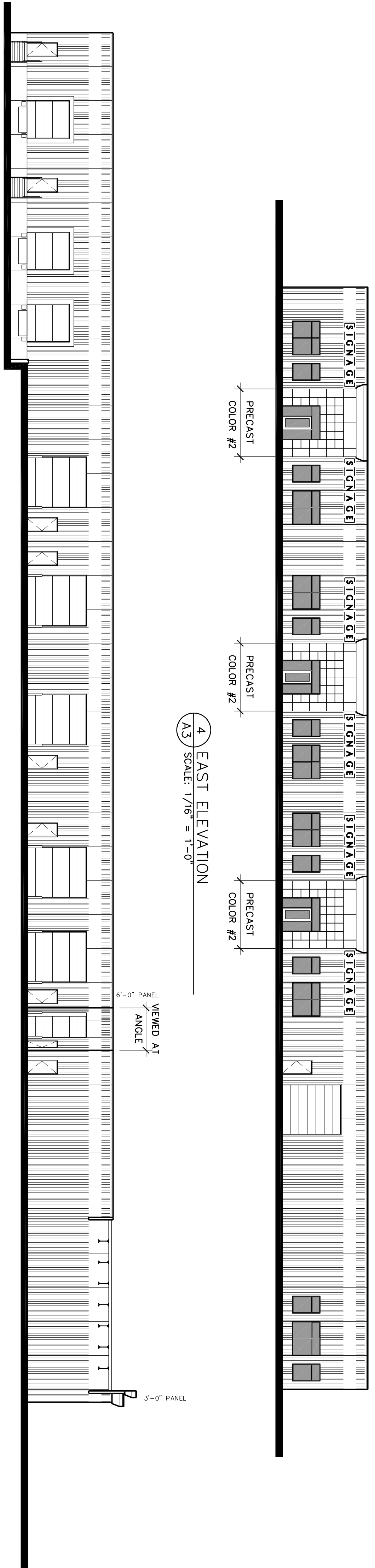
PRECAST PANEL  
RANDOM RIB PROFILE  
EXPOSED AGG. FINISH



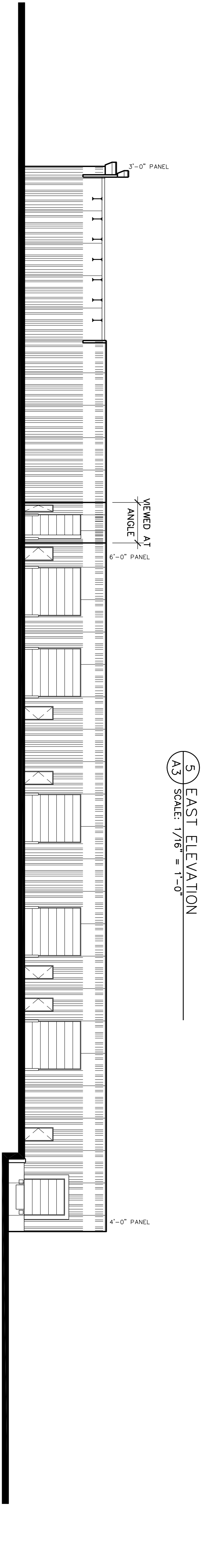
2 WEST ELEVATION  
A3 SCALE: 1/16" = 1'-0"



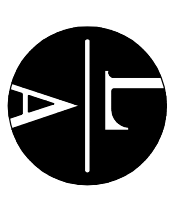
3 SOUTH ELEVATION  
A3 SCALE: 1/16" = 1'-0"



4 EAST ELEVATION  
A3 SCALE: 1/16" = 1'-0"



6 WEST ELEVATION  
A3 SCALE: 1/16" = 1'-0"



**LAMPERTS**  
**ARCHITECTS**  
420 Summit Avenue  
St. Paul, MN 55102  
Phone: 651.285.1411 Fax: 651.285.7289  
http://www.lamperts.com

**ARCHITECT CERTIFICATION:**  
I, JAMES B. LAMPERT, ARCHITECT, LICENSE NO. 0000000000, PREPARED BY ME OR UNDER MY DIRECT SUPERVISION AND THAT I AM A DULY LICENSED ARCHITECT UNDER THE LAWS OF THE STATE OF MINNESOTA.

**PRELIMINARY FOR CONSTRUCTION**

Sharp & Associates, LLC



500 Baker Lake Blvd  
Ando, MN 55303  
Ph (763) 425-2002  
Fax (763) 425-6428

**JASPER**  
**INDUSTRIAL BUILDING**  
Ramsey, Minnesota

Copyright 2017  
Lamperts Architects, P.A.  
Project Designer: JAMES B  
Drawn By: JRB  
Checked By: LL  
Revisions  
5/31/17, PRELIMINARY

**BUILDING ELEVATIONS**  
Sheet Number

**A3**

Project No. 170418-2