



Xceligent Direct

**We Power & Promote Your Listings.
You Focus on the Close.**



Xceligent Direct is a commercial real estate application that effortlessly integrates your up-to-date listings onto your company's website.

/ Search / Target / Share /

Xceligent

Regardless if you are a global, regional, or local real estate services firm, marketing your property listings effectively is what sets you apart, and helps you to close deals. Utilizing either the customizable stand-alone application or the embedded application, you can provide your potential clients to search for properties, map results and review detailed listing data, all without the time and expense of building a custom website application yourself.

Choose the embedded app to ensure visitors remain on your site while searching

/ Product Features /



Seamless integration with your website



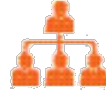
Advanced mapping platform and search filtering



Custom branding to match your identity



Single source for updating your listings

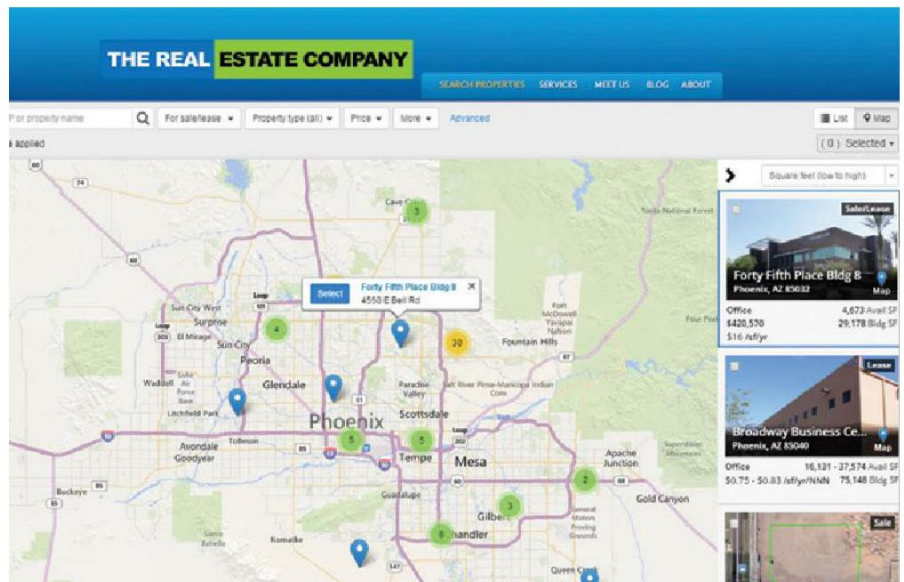


Flexibility to create personalized listing portals

Xceligent Direct is changing the landscape of how property listings are displayed and marketed - giving you the power to control the message and ensure a consistent brand experience for your clients.



Choose the standalone app for a full screen experience and branding capabilities



/ Implementation Process /

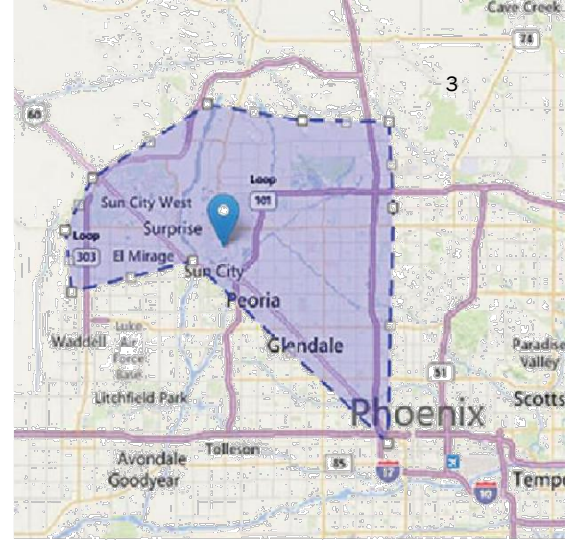
1 Provide your listings to Xcellgent, and our researchers will organize the data.



2 Xcellgent builds a custom property listing feed to market your listings. This can be customized with your company logo and brand colors.

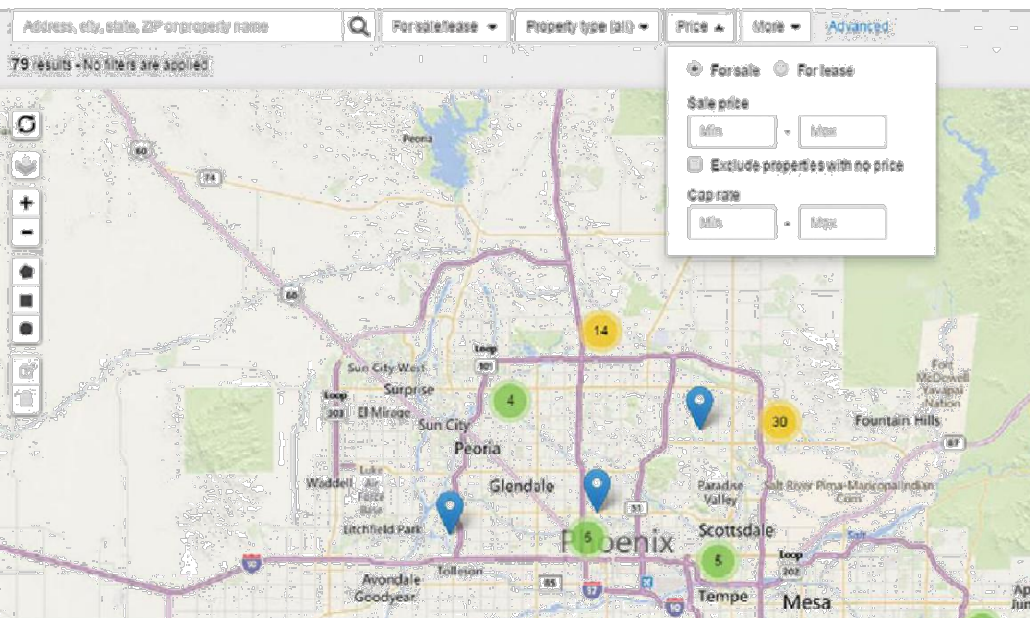


3 Once embedded on your site, the listing feed will display availability, property details, contacts, photos and maps through a user-friendly platform.



/ Benefits /

- Lightning fast mapping engine provides instant list filtering when panning or zooming.
- Map drawing tools allow visitors to quickly find listings that match their unique geographic requirements.
- Concierge services included with your subscription.
 - Call or email us to update your listings.
 - Your website is updated automatically.
- Flexibility to create personalized listing portals to tailor results to a targeted audience or geography.
- All maintenance fees included.



Sort and filter properties and view the results in real time on the map



The Plaza on Shea is a two building medical/office condo park with a very active mix of medical and professional businesses. One of the few "move-in ready" office properties in the Anacapa Country Club area, offering executive style offices, and move-in ready suites, with convenient drive up parking.

For Lease

Suite	Avail SF	Asking Rate	Available	Space Type
11	800	\$18.00 per sq ft	10/31/2012	Office

Property Details

Property Type	Office	Building SF	4,219
Year Built	1998	Floors	1
Office Class	IC	Zoning	S-R
Tenancy	Multi	Parcel (APN)	24729039C
Lot Acreage	1.94	Lot SF	84,568
County	Maricopa	Parking Spaces	27
Parking Ratio	4.44/1000		



/ About Xceligent /

Xceligent provides the foundation for making critical commercial real estate decisions. Whether leasing, lending or investing, reliable information is paramount. Clients can be confident in our data knowing our analysis comes through rigorous hands-on research verified by a true partnership with the industry. Our unique perspective and insight on the markets, coupled with our innovative platform and customizable data empowers our clients with a distinct advantage over the competition.

- **Verified Tenant Information** • **Quarterly Advisory Boards**
- **Sale & Lease Comps** • **Quarterly Analytic Reports** •
- **Provider of Choice for National Association of REALTORS® and CCIM** •

Xceligent

103 SE Magellan Dr, Blue Springs, MO 64014
(816) 427-9317 aboude@xceligent.com

