

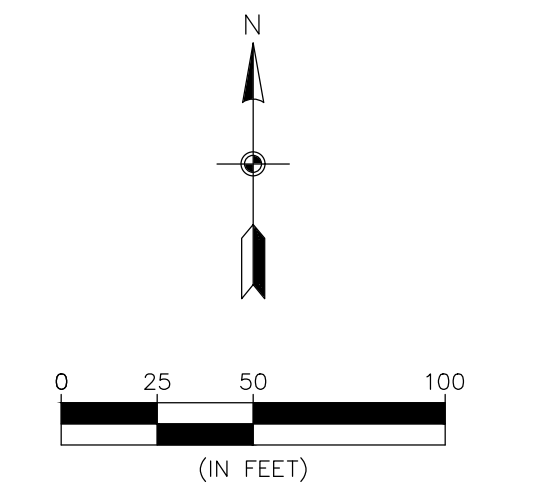
SUGGESTED PLANT LIST

OVERSTORY TREES	SIZE	ROOT	QTY.
	2"	BB	28
	2"	BB	45
	2"	BB	17
	2"	BB	18
	2"	BB	24
ORNAMENTAL TREES	SIZE	ROOT	QTY.
	12"	BB	9
	12"	BB	5
	1"	BB	9
CONIFEROUS TREES	SIZE	ROOT	QTY.
	6"	HT.	11
	6"	HT.	9
	6"	HT.	6
SHRUBS	SIZE	ROOT	QTY.
	#5	CONT.	12
	#5	CONT.	18
	#5	CONT.	13

BUNKER LAKE BLVD.

GRAVEL CONSTRUCTION ENTRANCE

BURLINGTON NORTHERN INC.
US HIGHWAY NO. 10 & 69



BENCHMARK
 1. Anoka County Benchmark No. 3076
 Elev. = 890.186 (NAVD 88)
 2. Anoka County Benchmark No. 2078
 Elev. = 899.499 (NAVD 88)

Save Date: 04/11/17 11:06:06 AM - 64406435 - ramsey site\cad\civil\engineering\preliminary\6435_lscp.dwg

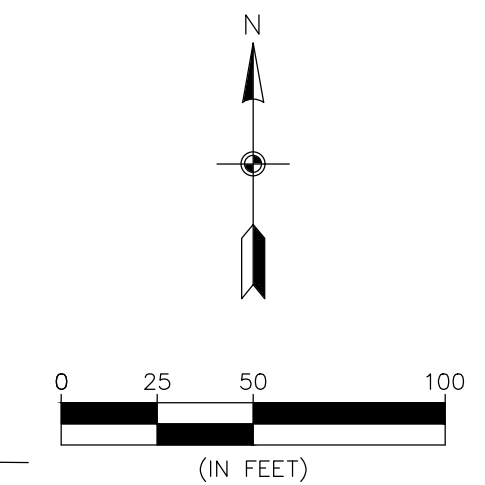
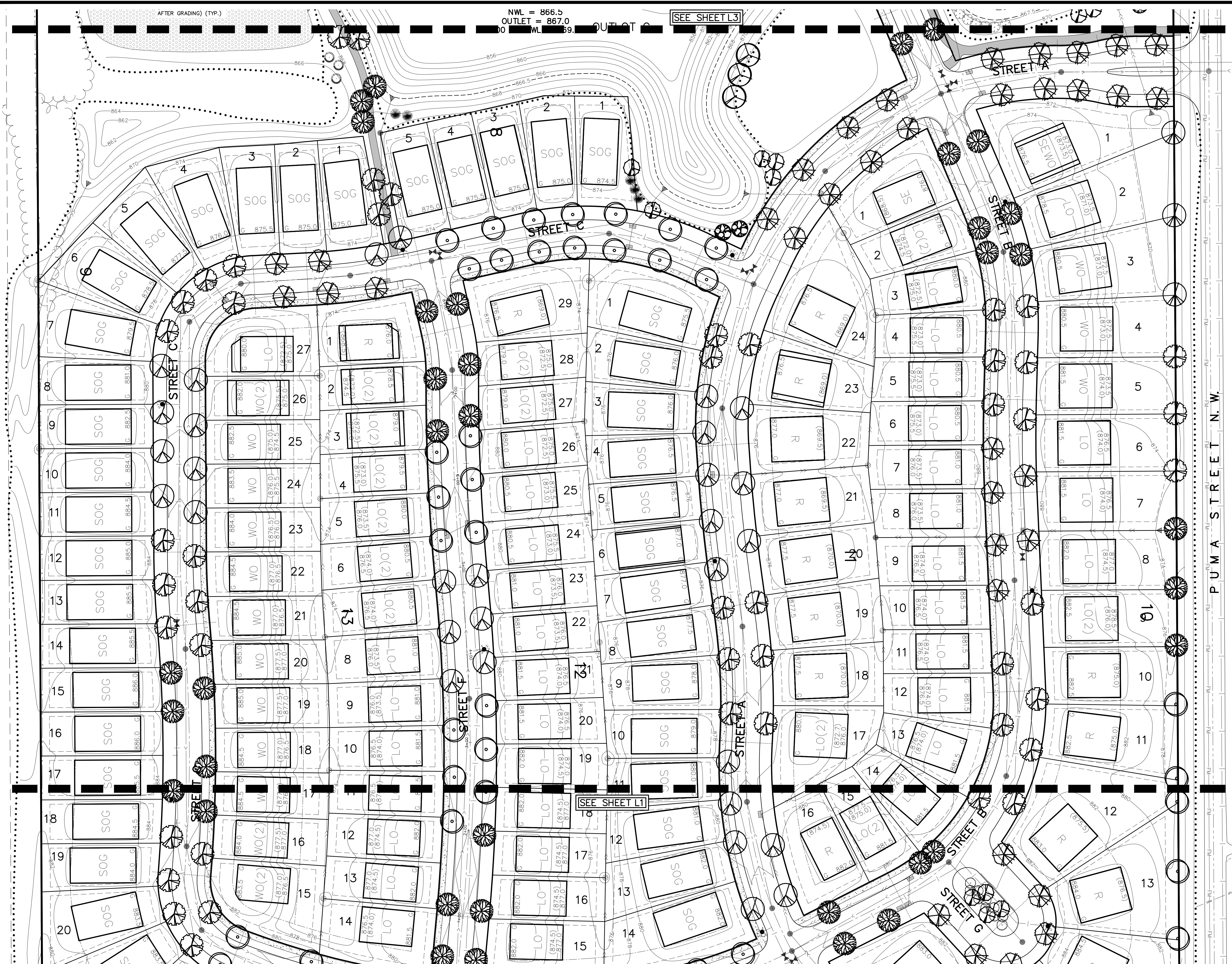
AFTER GRADING (TYP.)

NWL = 866.5
OUTLET = 867.0
00 NWL = 859.0

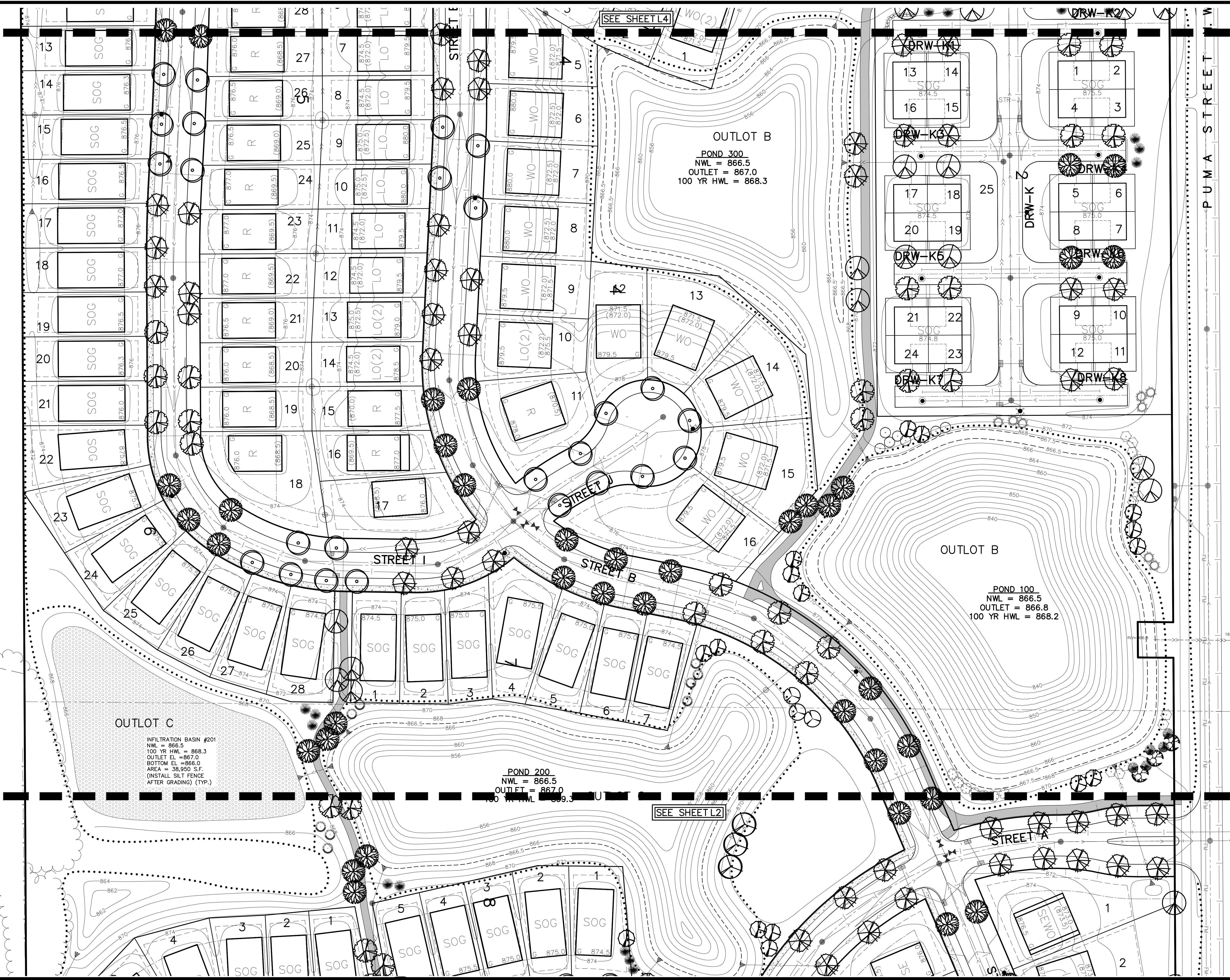
SEE SHEET L3

LANDSCAPE SCHEDULE

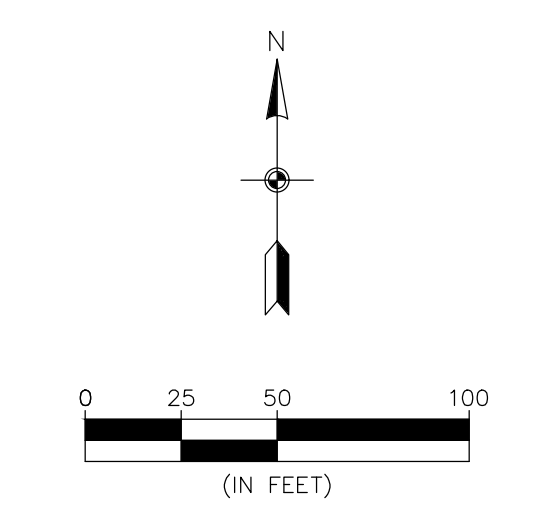
KEY	BOTANICAL NAME	COMMON NAME	SIZE	ROOT	QTY.
DECIDUOUS TREES					
	Quercus bicolor	SWAMP WHITE OAK	2"	BB	31
	Acer-X-freemontii-'Jeffersred'	AUTUMN BLAZE MAPLE	2"	BB	24
	Tilia americana 'Boulevard'	BOULEVARD LINDEN	2"	BB	29
	Celtis occidentalis	HACKBERRY	2"	BB	39
	Gleditsia tricanthos var. inermis 'Skycole'	HONEYLOCUST	2"	BB	24
ORNAMENTAL TREES					
	Amelanchier	SERVICEBERRY multi stem	12'	BB	5
	Betula nigra	RIVER BIRCH multi stem	12'	BB	-
	Malus 'Red Jewel'	RED JEWEL CRAB multi stem	8'	BB	2
CONIFEROUS TREES					
	Picea glauca densata	BLACK HILLS SPRUCE	6'	HT.	3
	Pinus nigra	AUSTRIAN PINE	6'	HT.	-
	Pinus sylvestris	SCOTCH PINE	6'	HT.	5
SHRUBS					
	Viburnum lentago	NANNYBERRY VIBURNUM	#5	CONT.	-
	Cornus sericea 'Cardinal'	CARDINAL DOGWOOD	#5	CONT.	-
	Syringa vulgaris	COMMON PURPLE LILAC	#5	CONT.	-



BENCHMARK
 1. Anoka County Benchmark No. 3076
 Elev. = 890.186 (NAVD 88)
 2. Anoka County Benchmark No. 2078
 Elev. = 899.499 (NAVD 88)



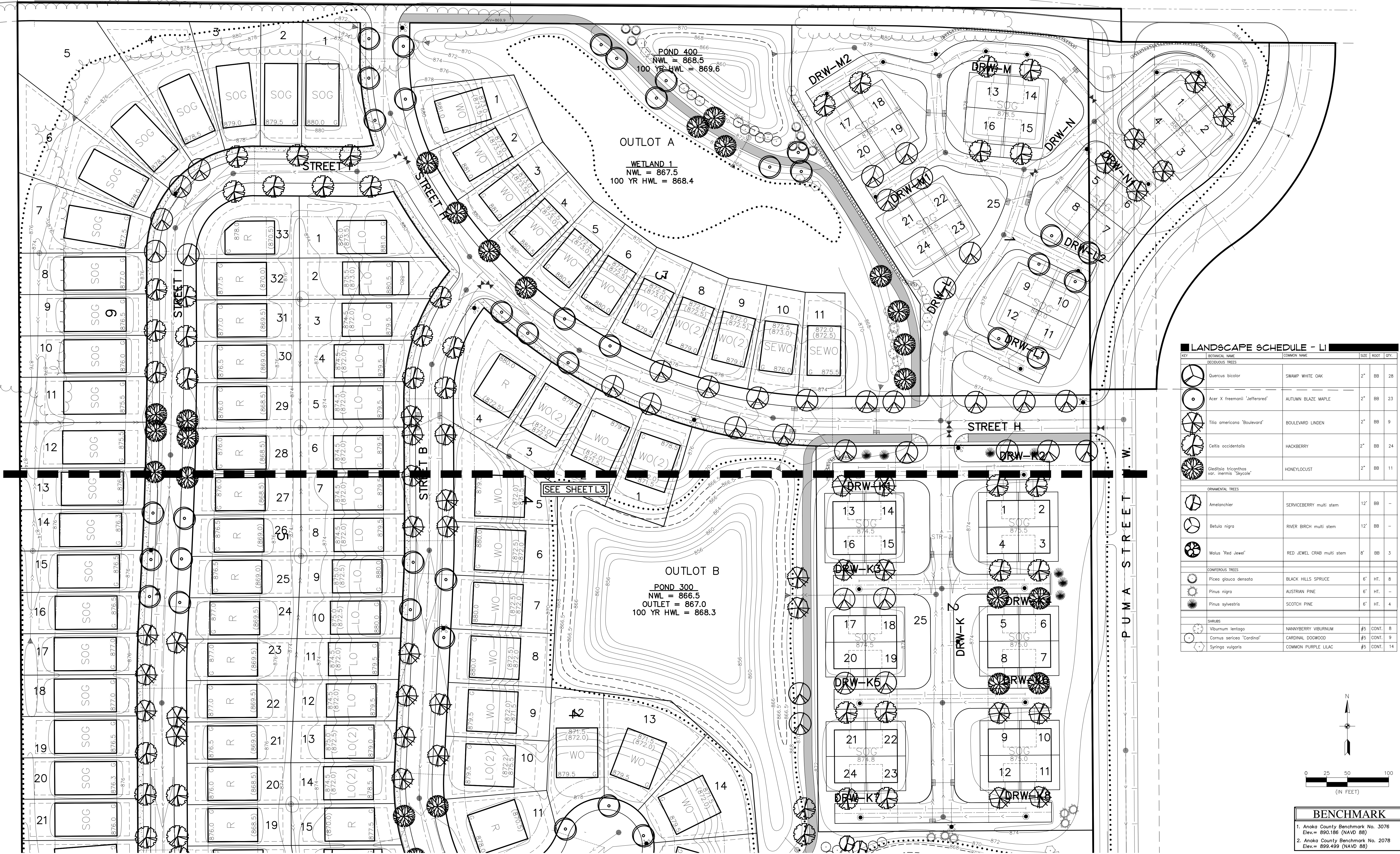
LANDSCAPE SCHEDULE - LI				
KEY	BOTANICAL NAME	COMMON NAME	SIZE	ROOT QTY.
DECIDUOUS TREES				
	<i>Quercus bicolor</i>	SWAMP WHITE OAK	2"	BB 12
	<i>Acer X freemanii 'Jefferson'</i>	AUTUMN BLAZE MAPLE	2"	BB 25
	<i>Tilia americana 'Boulevard'</i>	BOULEVARD LINDEN	2"	BB 31
	<i>Celtis occidentalis</i>	HACKBERRY	2"	BB 22
	<i>Gleditsia tricanthos var. inermis 'Skycole'</i>	HONEYLOCUST	2"	BB 30
ORNAMENTAL TREES				
	<i>Amelanchier</i>	SERVICEBERRY multi stem	12'	BB 12
	<i>Betula nigra</i>	RIVER BIRCH multi stem	12'	BB 3
	<i>Malus 'Red Jewel'</i>	RED JEWEL CRAB multi stem	8'	BB 3
CONIFEROUS TREES				
	<i>Picea glauca densata</i>	BLACK HILLS SPRUCE	6'	HT. 6
	<i>Pinus nigra</i>	AUSTRIAN PINE	6'	HT. 8
	<i>Pinus sylvestris</i>	SCOTCH PINE	6'	HT. 11
SHRUBS				
	<i>Viburnum lentago</i>	NANNYBERRY VIBURNUM	#5	CONT. 7
	<i>Cornus sericea 'Cardinal'</i>	CARDINAL DOGWOOD	#5	CONT. 7
	<i>Syringa vulgaris</i>	COMMON PURPLE LILAC	#5	CONT. 14



BENCHMARK
 1. Anoka County Benchmark No. 3076
 Elev = 890.186 (NAVD 88)
 2. Anoka County Benchmark No. 2078
 Elev = 899.499 (NAVD 88)

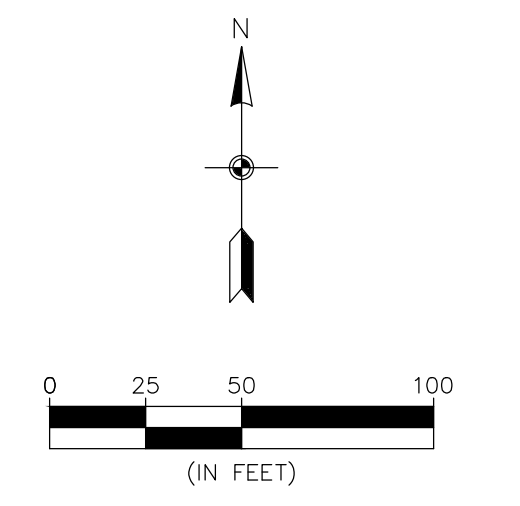
ALPINE DRIVE N. W.

ALPINE DRIVE N. W.



LANDSCAPE SCHEDULE - LI

KEY	SCIENTIFIC NAME	COMMON NAME	SIZE	HOOD	QTY
DECIDUOUS TREES					
	Quercus bicolor	SWAMP WHITE OAK	2"	BB	28
	Acer X freemanii "Jeffersred"	AUTUMN BLAZE MAPLE	2"	BB	23
	Tilia americana "Boulevard"	BOULEVARD LINDEN	2"	BB	9
	Celtis occidentalis	HACKBERRY	2"	BB	24
	Gleditsia tricanthos var. inermis "Skycole"	HONEYLOCUST	2"	BB	11
ORNAMENTAL TREES					
	Amelanchier	SERVICEBERRY multi stem	12'	BB	-
	Betula nigra	RIVER BIRCH multi stem	12'	BB	-
	Morus "Red Jewel"	RED JEWEL CRAB multi stem	8'	BB	3
CONIFEROUS TREES					
	Picea glauca densata	BLACK HILLS SPRUCE	6'	HT.	8
	Pinus nigra	AUSTRIAN PINE	6'	HT.	-
	Pinus sylvestris	SCOTCH PINE	6'	HT.	4
SHRUBS					
	Viburnum lentago	NANNYBERRY VIBURNUM	#5	CONT.	8
	Cornus sericea "Cardinal"	CARDINAL DOGWOOD	#5	CONT.	9
	Syringa vulgaris	COMMON PURPLE LILAC	#5	CONT.	14



BENCHMARK

1. Anoka County Benchmark No. 3076
Elev. = 890.186 (NAVD 88)

2. Anoka County Benchmark No. 2078
Elev. = 899.499 (NAVD 88)

Carlson McCain

- environmental
- engineering
- surveying

3890 Pheasant Ridge Drive NE,
Suite 100
Blaine, MN 55449
Phone: (763) 489-7900
Fax: (763) 489-7959
www.carlsonmccain.com

I hereby certify that this plan, specification or report was prepared by me or under my direct supervision and that I am a duly Licensed Landscape Architect under the laws of the State of Minnesota

Print Name: Scott J. Peterson, L.A.
Signature: [Signature]
Date: 3/08/17 License #: 70647

Drawn: SDB
Designed: SDB
Date: 3/08/17

Revisions:
1. 04/12/17 Per Owner

RIVERSTONE DEVELOPMENT, LLC.
14015 Sunfish Lake B, Suite 400
Ramsey, MN 55303

RIVERSTONE
Ramsey, MN

PRELIMINARY LANDSCAPE PLAN

L4 of 5

Save Date: 04/11/17 11:06:42 - 64406435 - ramsey site/cad c3/engineering/preliminary/6435_top.dwg

LANDSCAPE REQUIREMENTS

2 TREES PER LOT

2 X 291 = 594 TREES

TOTAL TREES TO BE PLANTED

= 1,003 TREES

OVERALL LANDSCAPE SCHEDULE

KEY	BOTANICAL NAME	COMMON NAME	SIZE	ROOT	QTY.
DECIDUOUS TREES					
	Quercus bicolor	SWAMP WHITE OAK	2"	BB	99
	Acer X freemanii 'Jeffersred'	AUTUMN BLAZE MAPLE	2"	BB	117
	Tilia americana 'Boulevard'	BOULEVARD LINDEN	2"	BB	86
	Celtis occidentalis	HACKBERRY	2"	BB	103
	Gleditsia tricanthos var. inermis 'Skycole'	HONEYLOCUST	2"	BB	89

KEY	BOTANICAL NAME	COMMON NAME	SIZE	ROOT	QTY.
DECIDUOUS TREES					
	Amelanchier x grandiflora 'Autumn Brilliance'	AUTUMN BRILLIANCE SERVICEBERRY multi stem	12'	BB	30
	Betula nigra	RIVER BIRCH multi stem	12'	BB	13
	Malus 'Red Jewel'	RED JEWEL CRAB multi stem	8'	BB	25

KEY	BOTANICAL NAME	COMMON NAME	SIZE	ROOT	QTY.
CONIFEROUS TREES					
	Picea glauca densata	BLACK HILLS SPRUCE	6'	HT.	28
	Pinus nigra	AUSTRIAN PINE	6'	HT.	20
	Pinus sylvestris	SCOTCH PINE	6'	HT.	26
ORNAMENTAL TREES					
SHRUBS					
	Viburnum lentago	NANNYBERRY VIBURNUM	#5	CONT.	27
	Cornus sericea 'Cardinal'	CARDINAL DOGWOOD	#5	CONT.	34
	Syringa vulgaris	COMMON PURPLE LILAC	#5	CONT.	41

GENERAL NOTES:

- LANDSCAPE CONTRACTOR TO VERIFY ALL UTILITY LOCATIONS ON THE PROPERTY WITH THE GENERAL CONTRACTOR AND BY GOPHER STATE ONE CALL PRIOR TO STAKING PLANT LOCATIONS.
- COORDINATE THE PHASES OF CONSTRUCTION AND PLANTING INSTALLATION WITH OTHER CONTRACTORS WORKING ON THE SITE.
- WHERE EXISTING TREES AND/OR SIGNIFICANT SHRUB MASSINGS ARE FOUND ON THE SITE WHETHER SHOWN ON THE DRAWINGS OR NOT, THEY SHALL BE PROTECTED AND SAVED UNLESS NOTED TO BE REMOVED AND/OR ARE WITHIN THE GRADING LIMITS. ANY QUESTION REGARDING WHETHER PLANT MATERIAL SHOULD OR SHOULD NOT REMAIN SHOULD BE BROUGHT TO THE ATTENTION OF THE LANDSCAPE ARCHITECT PRIOR TO REMOVAL.
- ALL EXISTING TREES TO REMAIN SHALL BE FERTILIZED AND PRUNED TO REMOVE DEAD WOOD AND DAMAGED OR RUBBING BRANCHES.
- BB TREES AND SHRUBS ARE BALLED AND BURLAPPED.
- NO PLANT MATERIAL SUBSTITUTIONS WILL BE ACCEPTED UNLESS APPROVAL IS REQUESTED OF THE LANDSCAPE ARCHITECT BY THE LANDSCAPE CONTRACTOR PRIOR TO SUBMISSION OF BID AND/OR QUOTATION.
- ALL PLANT MATERIAL SHALL COMPLY WITH THE LATEST ADDITION OF THE AMERICAN STANDARD FOR NURSERY STOCK, AMERICAN ASSOCIATION OF NURSERYMEN.
- THE CONTRACTOR IS RESPONSIBLE FOR ON-GOING MAINTENANCE OF ALL NEWLY INSTALLED MATERIALS UNTIL TIME OF OWNER ACCEPTANCE. ANY ACTS OF VANDALISM OR DAMAGE WHICH MAY OCCUR PRIOR TO OWNER ACCEPTANCE SHALL BE THE RESPONSIBILITY OF THE CONTRACTOR.
- CONTRACTOR SHALL PROVIDE A WRITTEN REQUEST FOR THE OWNER ACCEPTANCE INSPECTION.
- WARRANTY FOR THE LANDSCAPE MATERIALS SHALL BEGIN ON THE DATE OF ACCEPTANCE BY THE LANDSCAPE ARCHITECT AFTER THE COMPLETION OF PLANTING ALL LANDSCAPE MATERIALS. NO PARTIAL ACCEPTANCE WILL BE CONSIDERED.
- CONTRACTOR SHALL GUARANTEE NEW PLANT MATERIAL THROUGH ONE CALENDAR YEAR FROM THE DATE OF OWNER ACCEPTANCE WITH ALL REPLACEMENTS TO BE PROVIDED AT NO ADDITIONAL COST TO THE OWNER.

PLANTING SPECIFICATIONS:

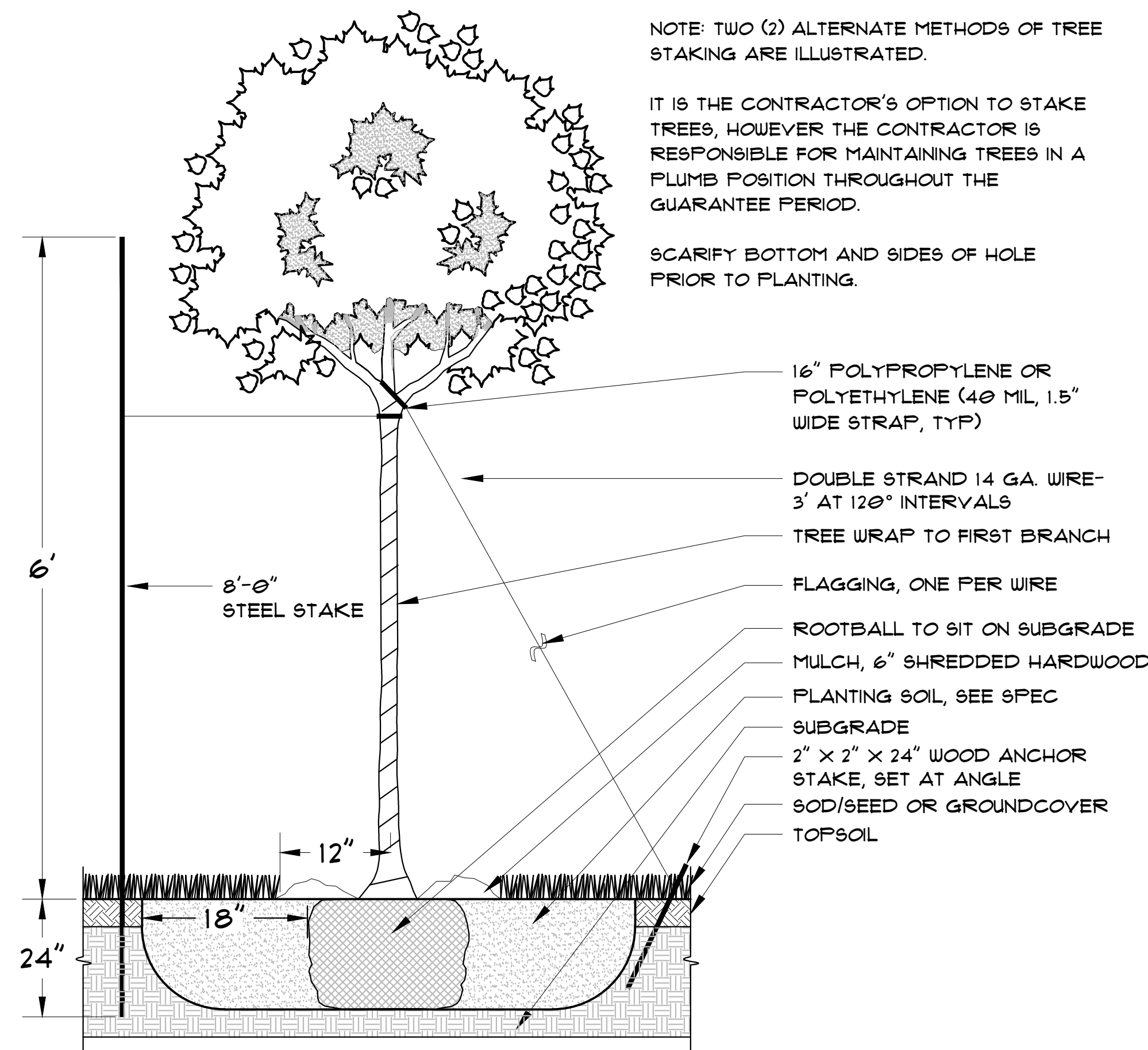
- PLANTING BED PREPARATION: ALL MASS PLANTING BEDS SHALL BE TILLED TO A MINIMUM DEPTH OF 10". AMENDMENTS SHALL BE APPLIED AFTER CULTIVATION.
- BACKFILL SOIL: USE SOIL EXCAVATED FROM PLANTING HOLES & PROVIDE AMENDMENTS. REMOVE ALL DEBRIS AND ROCKS LARGER THAN 3" IN DIA.
- FERTILIZATION: IT IS RECOMMENDED THAT NEWLY PLANTED TREES AND SHRUBS SHOULD NOT BE FERTILIZED THE FIRST YEAR. IF NECESSARY, BEGIN FERTILIZING TREES AND SHRUBS THE SECOND YEAR AFTER ESTABLISHMENT AT A RATIO AND RATE BASED ON A SOIL TEST.
- MULCH MATERIAL: AS SPECIFIED ON LANDSCAPE PLANS. MASS MULCH ALL PLANTING BEDS TO 3" DEPTH OVER FIBER MAT WEED BARRIER. ALL PERENNIAL PLANTING BEDS TO RECEIVE 3" DEEP SHREDDED HARDWOOD MULCH WITH NO FIBER WEED MAT BARRIER. ALL DECIDUOUS AND EVERGREEN TREES TO RECEIVE 6" DEEP SHREDDED HARDWOOD MULCH WITH NO MULCH IN DIRECT CONTACT WITH TREE TRUNK.
- TREE STAKING: IT SHALL BE THE CONTRACTOR'S RESPONSIBILITY TO STAKE AND/OR GUY THE TREES ACCORDING TO THE DETAILS. IT IS THE CONTRACTOR'S RESPONSIBILITY TO TAKE EVERY STEP NECESSARY TO MAINTAIN THE TREES AND SHRUBS ON AN UPRIGHT AND PLUMB CONDITION AT ALL TIMES UNTIL THE END OF THE PLANT GUARANTEE PERIOD, ESPECIALLY WHERE VANDALISM, SOIL OR WIND CONDITIONS ARE A PROBLEM.
- TREE WRAPPING: WRAPPING MATERIAL SHALL BE QUALITY, HEAVY WATERPROOF CREPE PAPER MANUFACTURED FOR THIS PURPOSE. WRAP ALL DECIDUOUS TREES IN THE FALL PRIOR TO 12-1 AND REMOVE ALL WRAPPING BY 5-1.
- RODENT PROTECTION: PROVIDE ON ALL TREES, EXCEPT SPRUCE UNLESS OTHERWISE NOTED.
- PLANTING PLAN: ALL PROPOSED PLANTS SHALL BE LOCATED CAREFULLY AS SHOWN ON THE PLANS. THE PLAN TAKES PRECEDENCE OVER THE NOTES. RESPECT STATED DIMENSIONS. DO NOT SCALE DRAWINGS.
- EDGING: EDGING SHALL BE 4" P.V.C COMMERCIAL GRADE EDGING WITH THREE (3) METAL ANCHOR STAKES PER 20 FOOT SECTION, UNLESS OTHERWISE NOTED ON THE PLAN. ALL MASS PLANTING BEDS SHALL HAVE EDGING PLACED BETWEEN MULCH AND ANY ADJACENT TURF AREAS.

PLANTING NOTES:

- NO PLANTING TO BE INSTALLED UNTIL GRADING AND CONSTRUCTION HAS BEEN COMPLETED IN THE IMMEDIATE AREA.
- ALL PLANT MATERIAL LOCATIONS MUST BE REVIEWED AND APPROVED BY THE LANDSCAPE ARCHITECT PRIOR TO ANY AND ALL DIGGING.
- IF THE LANDSCAPE CONTRACTOR PERCEIVES ANY DEFICIENCIES IN THE PLANT SELECTIONS, SOIL CONDITIONS, OR ANY OTHER SITE CONDITION WHICH MIGHT NEGATIVELY AFFECT PLANT MATERIAL ESTABLISHMENT, SURVIVAL OR GUARANTEE, THEY SHALL BRING THESE DEFICIENCIES TO THE ATTENTION OF THE LANDSCAPE ARCHITECT PRIOR TO INSTALLATION.
- ADJUSTMENTS IN THE LOCATION OF PROPOSED PLANT MATERIAL MAY BE NEEDED IN THE FIELD. SHOULD AN ADJUSTMENT BE ADVISED, THE LANDSCAPE ARCHITECT MUST BE NOTIFIED.
- ALL PLANTS TO BE INSTALLED PER PLANTING DETAILS.
- ONE SHRUB PER TYPE AND SIZE IN EACH PLANTING BED AND EVERY TREE SHOULD BE CLEARLY IDENTIFIED (COMMON OR LATIN NOMENCLATURE) WITH A PLASTIC TAG WHICH SHALL NOT BE REMOVED PRIOR TO OWNER ACCEPTANCE.
- WHERE SOD/SEED ABUTS PAVED SURFACES, FINISHED GRADE OF SEED/SOD SHALL BE HELD 1" BELOW SURFACE ELEVATION OF TRAIL, SLAB, CURB, ETC.
- SOD SHALL BE LAID PARALLEL TO THE CONTOURS AND SHALL HAVE STAGGERED JOINTS. ON SLOPES STEEPER THAN 3 : 1 OR IN DRAINAGE SWALES, THE SOD SHALL BE STAKED TO THE GROUND.
- SEED ALL AREAS DISTURBED DUE TO GRADING OTHER THAN THOSE TO RECEIVE SOD.
- REPAIR ALL DAMAGE TO PROPERTY FROM PLANTING OPERATORS AT NO COST TO THE OWNER.

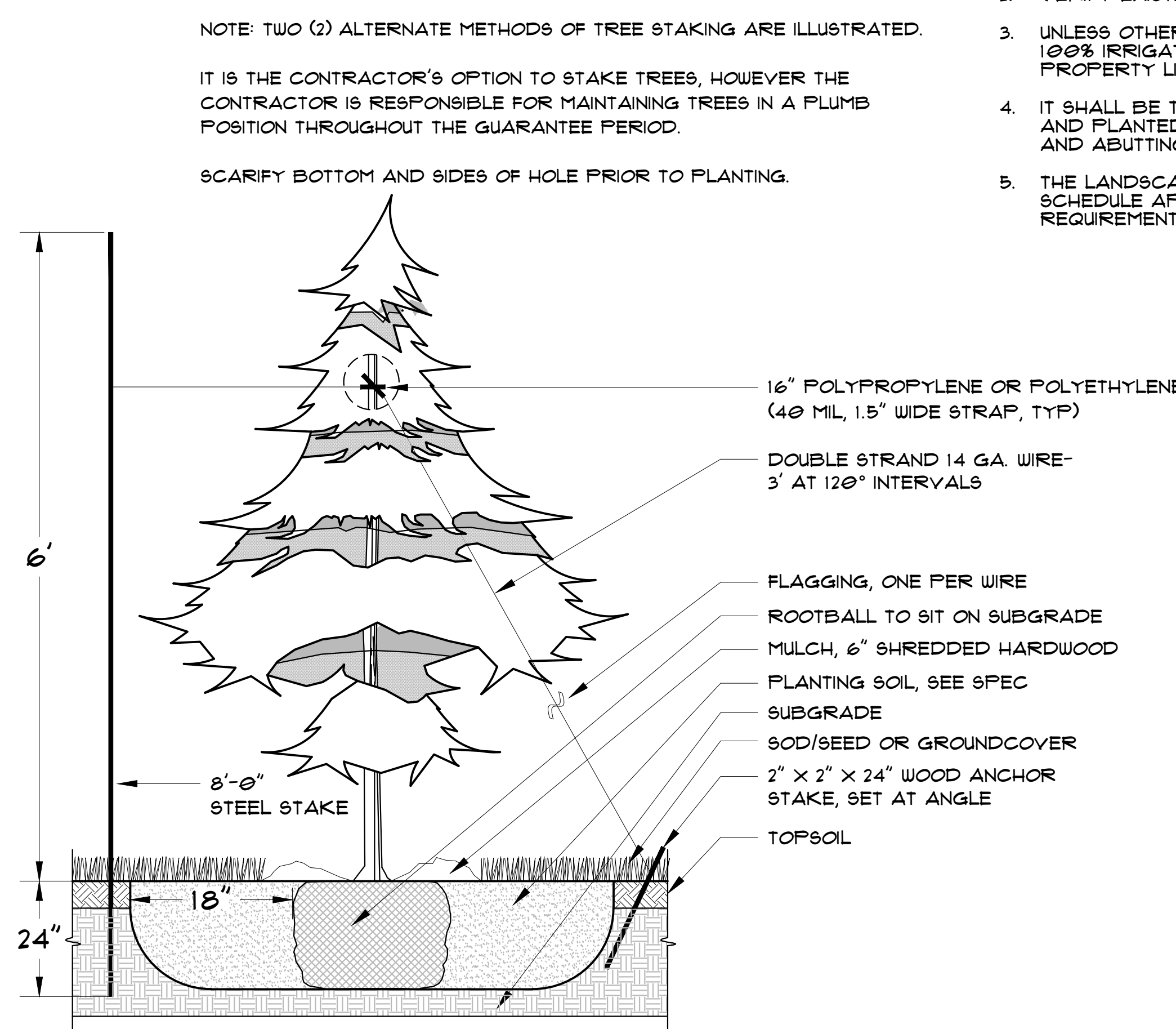
IRRIGATION NOTES:

- LANDSCAPE CONTRACTOR SHALL BE RESPONSIBLE FOR PROVIDING SHOP DRAWINGS ILLUSTRATING IRRIGATION PLANS AND SPECIFICATIONS AS PART OF THE SCOPE OF WORK WHEN BIDDING. THESE SHALL BE APPROVED BY THE LANDSCAPE ARCHITECT PRIOR TO ORDER.
- VERIFY EXISTING/PROPOSED SYSTEM LOCATION.
- UNLESS OTHERWISE NOTED, ALL SOD/SEED AND PLANTING AREAS INDICATED ON THE PLAN SHALL BE 100% IRRIGATED. THE IRRIGATION SHALL INCLUDE THE PUBLIC RIGHT OF WAY BETWEEN THE PROPERTY LINE AND BACK OF CURB WHERE NEW LANDSCAPE IMPROVEMENTS ARE PROPOSED.
- IT SHALL BE THE LANDSCAPE CONTRACTOR'S RESPONSIBILITY TO INSURE THAT ALL SODDED/SEEDED AND PLANTED AREAS ARE IRRIGATED PROPERLY, INCLUDING THOSE AREAS DIRECTLY AROUND AND ABUTTING BUILDING FOUNDATION.
- THE LANDSCAPE CONTRACTOR SHALL PROVIDE THE OWNER WITH A WATERING/LAWN IRRIGATION SCHEDULE APPROPRIATE TO THE PROJECT SITE CONDITIONS AND TO PLANT MATERIAL GROWTH REQUIREMENTS.



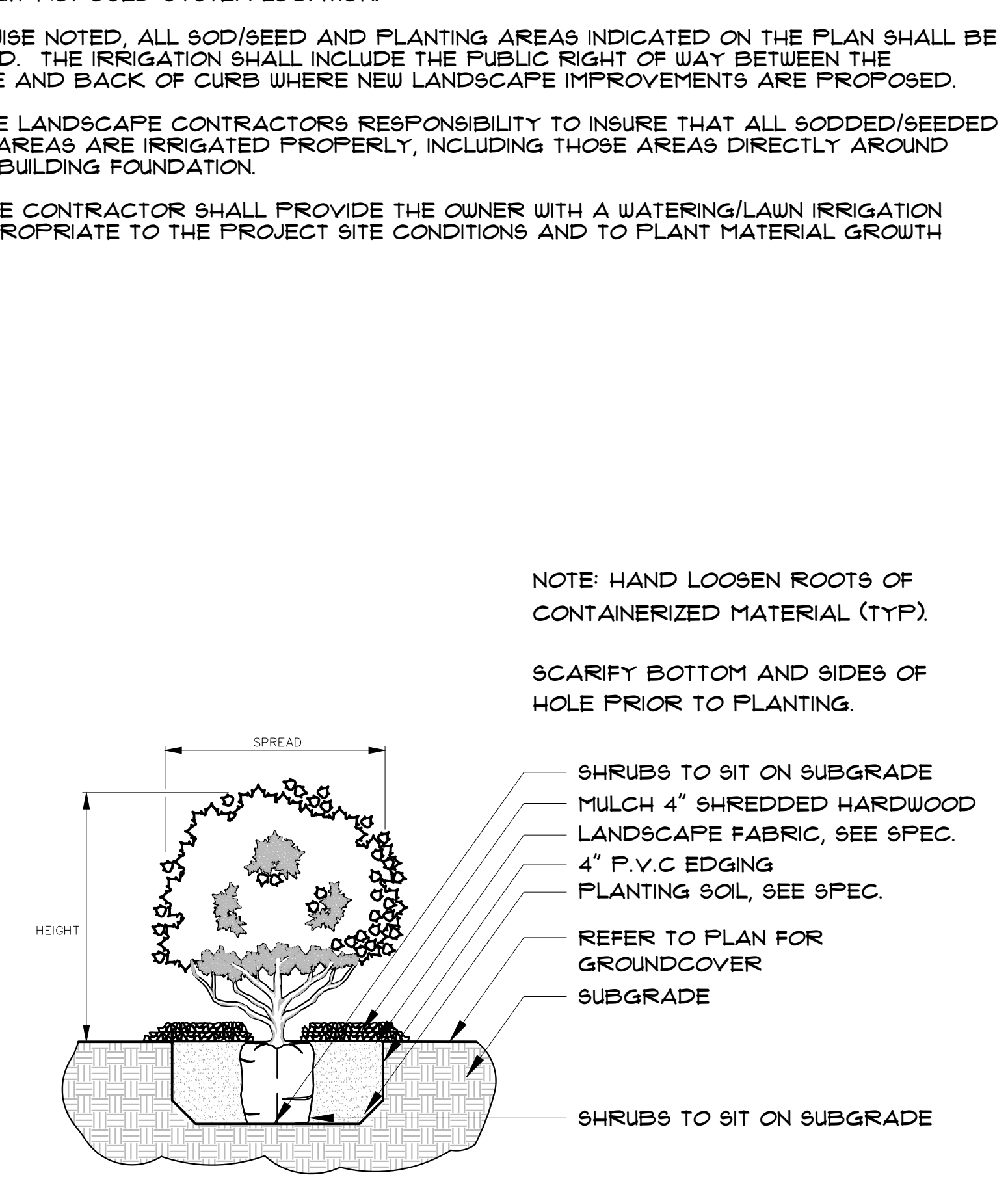
1 L2 DECIDUOUS TREE

LEVEL SITE



2 L2 CONIFEROUS TREE

LEVEL SITE



3 L2 SHRUB

LEVEL SITE