
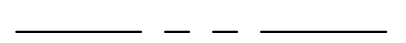
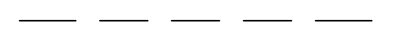
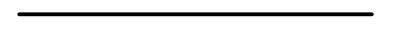




SHEET INDEX

- C0 COVER SHEET
- UTILITY AND STREET CONSTRUCTION
- C1 LITHIUM ST NW
- C2 DETAILS
- C3 DETAILS
- EROSION CONTROL, LANDSCAPING AND DETAILS
- C4 STORMWATER POLLUTION PREVENTION PLAN
- C5 STORMWATER POLLUTION PREVENTION PLAN
- G1 GRADING PLAN
- T1 TREE PLAN

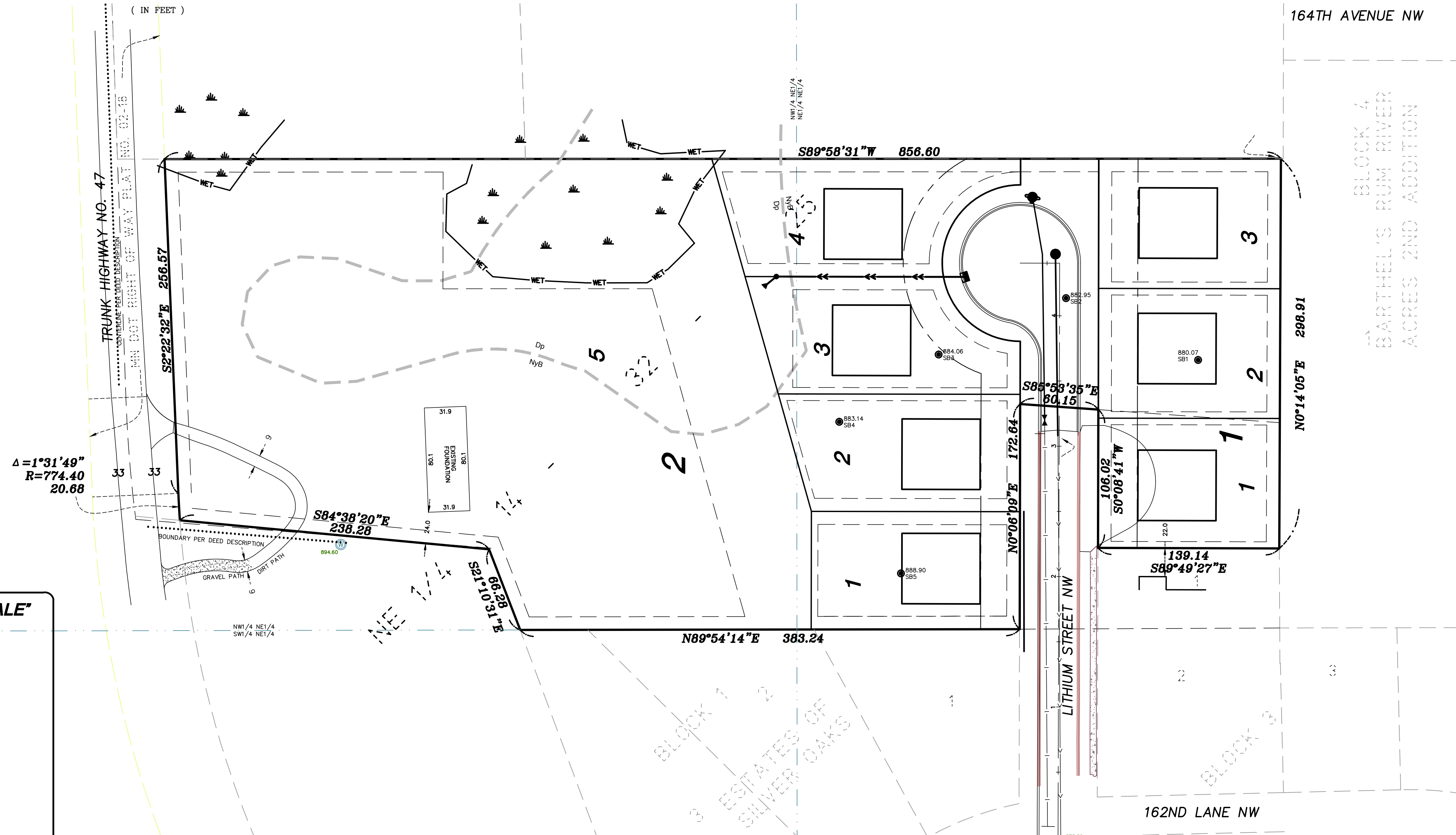
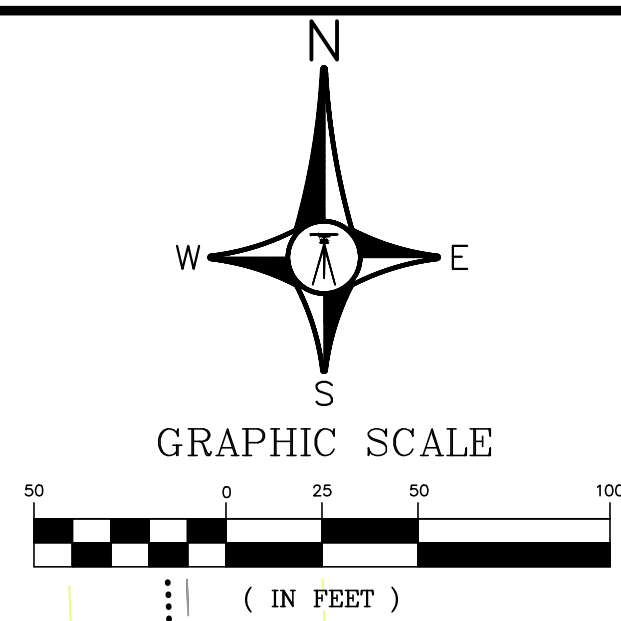
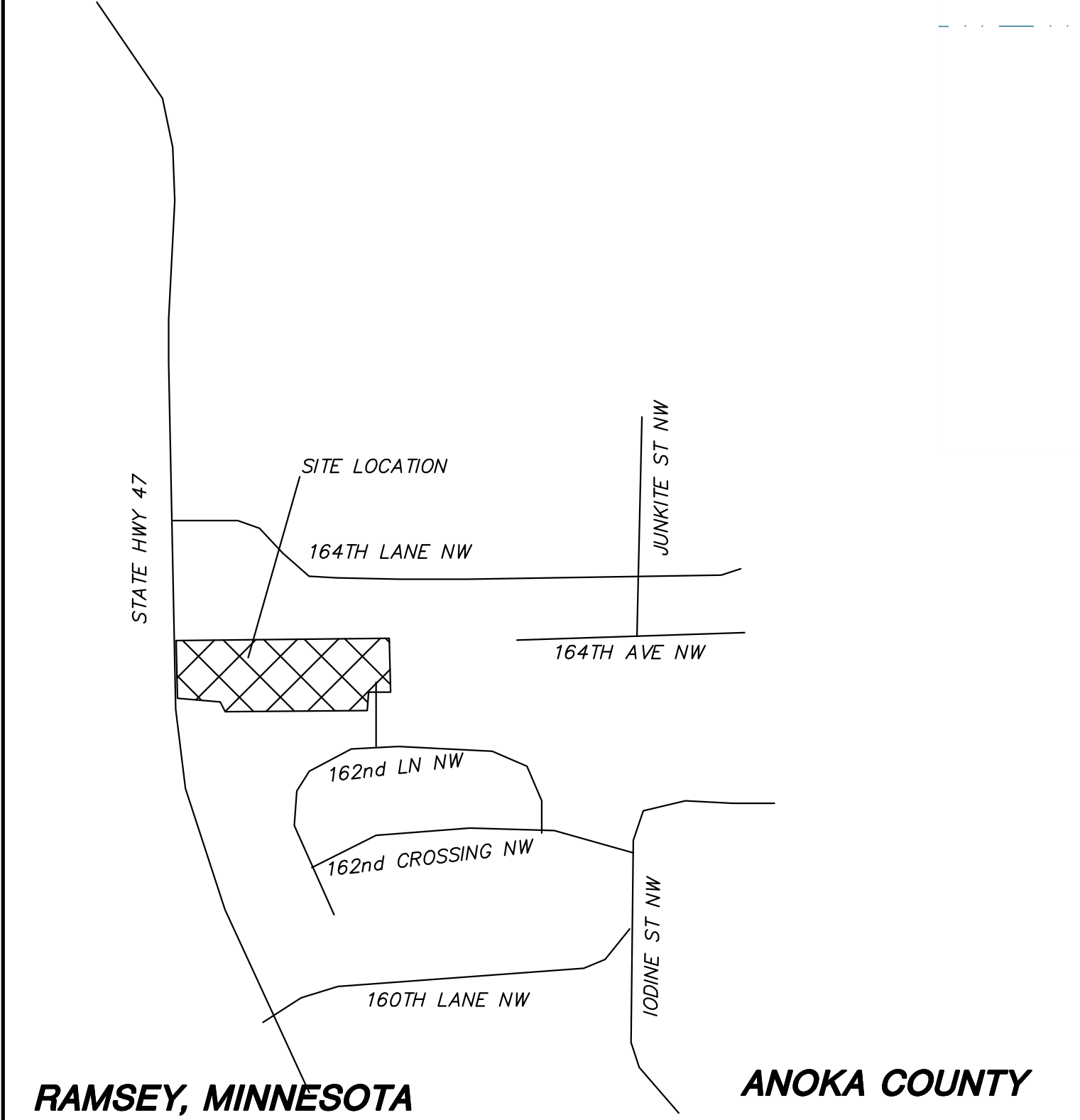
LINE TYPE & SYMBOL LEGEND

-  DENOTES SOIL BORING
-  SETBACK
-  EASEMENT
-  LOT LINE
-  R/W
-  EDGE OF BITUMINOUS CENTERLINE

OWNER:
 ROYAL OAKS REALTY
 1000 Co Rd E, Ste 150
 Shoreview, Minnesota 55123
 Phone: (651) 483-5518

LOCATION MAP

"NOT TO SCALE"



DATE	REVISIONS	BY

ROSELL ENGINEERING, LLC
 6192 267 TH CT WYOMING, MN 55092
 PHONE: 763.286.0521

SILVER OAKS 2ND ADDITION
 COVER SHEET
 RAMSEY, MINNESOTA

DATE: 5/4/2017 REG. NO. 24028
 PROJECT: AS SHOWN
 CHECKED: BTR
 APPROVED: BTR

C0

RECORDED DRAWING