

Ramsey Business Park Site Tree Preservation Plan Tree Survey

PSD, LLC

Prepared By:

Bolton & Menk, Inc.

7533 Sunwood Drive NW #206

Ramsey, MN 55303

(763) 433-2851

Invasive Species (Exclusions)

Tree ID	Tree Type	Remove/Preserve	Reason for Removal	Size (DBH)	Condition	Notes
0	Elm	Remove	Invasive Species	11"	5	
1	Elm	Remove	Invasive Species	14"	5	Multi-Trunk: 14" & 12"
2	Elm	Remove	Invasive Species	11"	5	
3	Elm	Remove	Invasive Species	20"	5	
4	Elm	Remove	Invasive Species	15"	3	Multi-Trunk: 15", 6", 8", 8" & 6"
5	Elm	Remove	Invasive Species	9"	5	
6	Elm	Remove	Invasive Species	7"	5	Multi-Trunk: 7" & 10"
7	Elm	Remove	Invasive Species	7"	3	Multi-Trunk: 7" & 7"
8	Elm	Remove	Invasive Species	10"	3	Multi-Trunk: 8" & 10"
9	Elm	Remove	Invasive Species	8"	3	Multi-Trunk: 7" & 8"
10	Elm	Remove	Invasive Species	10"	5	Multi-Trunk: 10" & 5"
11	Elm	Remove	Invasive Species	8"	4	
12	Elm	Remove	Invasive Species	10"	4	
13	Elm	Remove	Invasive Species	8"	4	
14	Elm	Remove	Invasive Species	9"	4	Multi-Trunk: 8" & 9"
15	Elm	Remove	Invasive Species	8"	2	
16	Elm	Remove	Invasive Species	8"	5	Multi-Trunk: 8" & 4"
17	Elm	Remove	Invasive Species	8"	4	
18	Elm	Remove	Invasive Species	9"	5	
19	Elm	Remove	Invasive Species	8"	5	
20	Elm	Remove	Invasive Species	13"	5	

Water Quality Ponds (Exclusions)

Tree ID	Tree Type	Remove/Preserve	Reason for Removal	Size (DBH)	Condition	Notes
0	Pine	Remove	Water Quality Pond	5"	5	
1	Juniper	Remove	Water Quality Pond	5"	5	
2	Pine	Remove	Water Quality Pond	7"	5	
3	Juniper	Remove	Water Quality Pond	4"	5	
4	Pine	Remove	Water Quality Pond	5"	5	
5	Pine	Remove	Water Quality Pond	4"	5	
6	Pine	Remove	Water Quality Pond	7"	5	
7	Pine	Remove	Water Quality Pond	6"	5	
8	Pine	Remove	Water Quality Pond	5"	5	
9	Pine	Remove	Water Quality Pond	6"	5	
10	Pine	Remove	Water Quality Pond	10"	5	
11	Pine	Remove	Water Quality Pond	9"	5	
12	Pine	Remove	Water Quality Pond	7"	1	
13	Pine	Remove	Water Quality Pond	10"	5	
14	Pine	Remove	Water Quality Pond	8"	5	
15	Pine	Remove	Water Quality Pond	6"	5	
16	Pine	Remove	Water Quality Pond	6"	5	
17	Pine	Remove	Water Quality Pond	9"	5	
18	Pine	Remove	Water Quality Pond	6"	5	Multi-Trunk: 6" & 5"
19	Pine	Remove	Water Quality Pond	6"	5	
20	Pine	Remove	Water Quality Pond	6"	5	
21	Pine	Remove	Water Quality Pond	9"	5	
22	Pine	Remove	Water Quality Pond	6"	5	
23	Pine	Remove	Water Quality Pond	9"	5	
24	Juniper	Remove	Water Quality Pond	4"	5	
25	Juniper	Remove	Water Quality Pond	4"	5	
26	Juniper	Remove	Water Quality Pond	4"	5	
27	Juniper	Remove	Water Quality Pond	4"	5	
28	Pine	Remove	Water Quality Pond	7"	2	
29	Pine	Remove	Water Quality Pond	7"	5	

Tree ID	Tree Type	Remove/Preserve	Reason for Removal	Size (DBH)	Condition	Notes
30	Pine	Remove	Water Quality Pond	6"	5	Multi-Trunk: 6" & 4"
31	Pine	Remove	Water Quality Pond	9"	5	
32	Pine	Remove	Water Quality Pond	9"	5	
33	Pine	Remove	Water Quality Pond	8"	5	
34	Pine	Remove	Water Quality Pond	7"	5	
35	Pine	Remove	Water Quality Pond	9"	5	
36	Pine	Remove	Water Quality Pond	9"	5	
37	Pine	Remove	Water Quality Pond	7"	5	
38	Pine	Remove	Water Quality Pond	7"	5	
39	Pine	Remove	Water Quality Pond	7"	5	
40	Pine	Remove	Water Quality Pond	5"	5	
41	Pine	Remove	Water Quality Pond	6"	5	
42	Pine	Remove	Water Quality Pond	9"	5	
43	Pine	Remove	Water Quality Pond	6"	5	
44	Pine	Remove	Water Quality Pond	7"	5	
45	Pine	Remove	Water Quality Pond	6"	5	
46	Pine	Remove	Water Quality Pond	7"	5	
47	Pine	Remove	Water Quality Pond	6"	5	
48	Pine	Remove	Water Quality Pond	7"	5	
49	Juniper	Remove	Water Quality Pond	4"	5	
50	Juniper	Remove	Water Quality Pond	4"	5	
51	Pine	Remove	Water Quality Pond	6"	5	
52	Pine	Remove	Water Quality Pond	7"	5	
53	Pine	Remove	Water Quality Pond	7"	5	
54	Pine	Remove	Water Quality Pond	5"	5	
55	Pine	Remove	Water Quality Pond	5"	5	
56	Pine	Remove	Water Quality Pond	4"	5	
57	Pine	Remove	Water Quality Pond	4"	5	
58	Pine	Remove	Water Quality Pond	6"	5	
59	Pine	Remove	Water Quality Pond	6"	5	
60	Juniper	Remove	Water Quality Pond	4"	5	
61	Pine	Remove	Water Quality Pond	5"	5	
62	Pine	Remove	Water Quality Pond	9"	5	Multi-Trunk: 9" & 8"
63	Pine	Remove	Water Quality Pond	5"	5	
64	Oak	Remove	Water Quality Pond	6"	5	
65	Pine	Remove	Water Quality Pond	6"	5	Multi-Trunk: 6" & 5"
66	Pine	Remove	Water Quality Pond	6"	5	
67	Oak	Remove	Water Quality Pond	4"	5	
68	Pine	Remove	Water Quality Pond	8"	5	
69	Pine	Remove	Water Quality Pond	5"	5	
70	Pine	Remove	Water Quality Pond	11"	5	
71	Pine	Remove	Water Quality Pond	7"	5	
72	Pine	Remove	Water Quality Pond	6"	5	
73	Pine	Remove	Water Quality Pond	6"	5	
74	Pine	Remove	Water Quality Pond	5"	5	
75	Pine	Remove	Water Quality Pond	6"	5	
76	Pine	Remove	Water Quality Pond	4"	5	
77	Juniper	Remove	Water Quality Pond	4"	5	
78	Pine	Remove	Water Quality Pond	8"	5	
79	Pine	Remove	Water Quality Pond	9"	5	
80	Pine	Remove	Water Quality Pond	7"	5	
81	Pine	Remove	Water Quality Pond	8"	5	Multi-Trunk: 8" & 6"
82	Pine	Remove	Water Quality Pond	4"	5	
83	Pine	Remove	Water Quality Pond	4"	5	
84	Pine	Remove	Water Quality Pond	5"	5	
85	Pine	Remove	Water Quality Pond	5"	5	
86	Pine	Remove	Water Quality Pond	11"	5	
87	Pine	Remove	Water Quality Pond	6"	5	
88	Pine	Remove	Water Quality Pond	8"	2	Multi-Trunk: 8" & 4"
89	Pine	Remove	Water Quality Pond	10"	5	
90	Pine	Remove	Water Quality Pond	7"	5	
91	Pine	Remove	Water Quality Pond	12"	5	
92	Cottonwood	Remove	Water Quality Pond	13"	5	Multi-Trunk: 13", 12" & 5"
93	Cottonwood	Remove	Water Quality Pond	6"	5	
94	Cottonwood	Remove	Water Quality Pond	8"	5	Multi-Trunk: 8" & 7"
95	Cottonwood	Remove	Water Quality Pond	6"	5	Multi-Trunk: 6" & 6"
96	Cottonwood	Remove	Water Quality Pond	8"	5	
97	Pine	Remove	Water Quality Pond	11"	5	
98	Cottonwood	Remove	Water Quality Pond	6"	5	Multi-Trunk: 6" & 4"
99	Cottonwood	Remove	Water Quality Pond	4"	5	

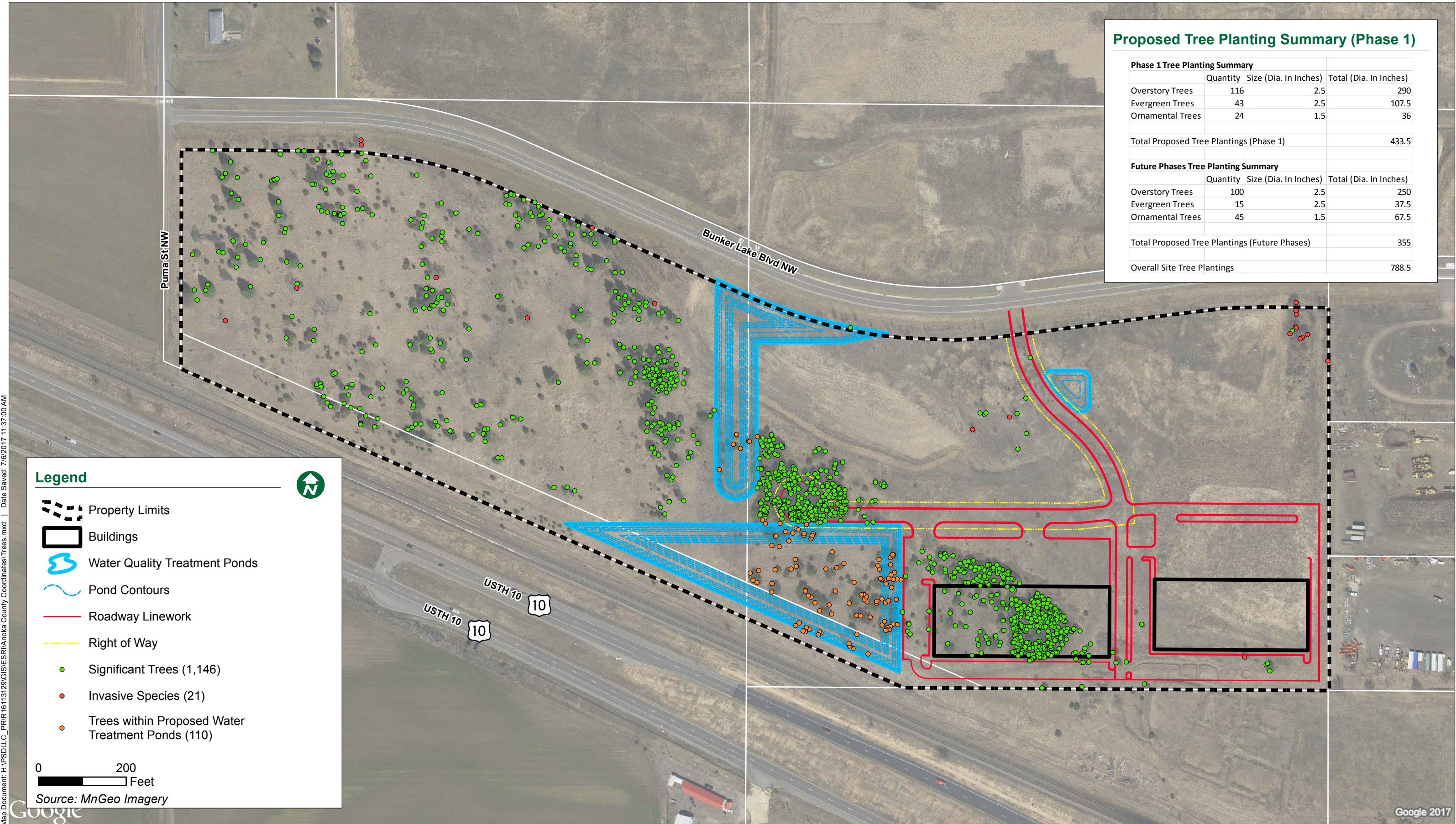
Tree ID	Tree Type	Remove/Preserve	Reason for Preservation	Size (DBH)	Condition	Notes
100	Cottonwood	Remove	Water Quality Pond	4"	5	
101	Cottonwood	Remove	Water Quality Pond	10"	5	
102	Cottonwood	Remove	Water Quality Pond	6"	5	
103	Cottonwood	Remove	Water Quality Pond	4"	5	
104	Cottonwood	Remove	Water Quality Pond	6"	5	Multi-Trunk: 6" & 4"
105	Cottonwood	Remove	Water Quality Pond	6"	5	
106	Cottonwood	Remove	Water Quality Pond	6"	5	
107	Cottonwood	Remove	Water Quality Pond	4"	5	
108	Pine	Remove	Water Quality Pond	5"	1	
109	Pine	Remove	Water Quality Pond	5"	5	

Trees Surveyed Outside Property Limits (Exclusions)

Tree ID	Tree Type	Remove/Preserve	Reason for Preservation	Size (DBH)	Condition	Notes
0	Pine	Preserve	Outside Site Limits	7"	5	
1	Pine	Preserve	Outside Site Limits	5"	5	
2	Pine	Preserve	Outside Site Limits	6"	5	
3	Juniper	Preserve	Outside Site Limits	4"	5	
4	Juniper	Preserve	Outside Site Limits	4"	5	
5	Juniper	Preserve	Outside Site Limits	4"	5	
6	Juniper	Preserve	Outside Site Limits	4"	5	
7	Elm	Preserve	Outside Site Limits	11"	5	
8	Juniper	Preserve	Outside Site Limits	4"	5	
9	Pine	Preserve	Outside Site Limits	4"	5	
10	Juniper	Preserve	Outside Site Limits	6"	5	
11	Pine	Preserve	Outside Site Limits	8"	5	
12	Pine	Preserve	Outside Site Limits	6"	5	
13	Pine	Preserve	Outside Site Limits	6"	5	
14	Pine	Preserve	Outside Site Limits	6"	5	
15	Elm	Preserve	Outside Site Limits	9"	5	
16	Elm	Preserve	Outside Site Limits	7"	5	Multi-Trunk: 7" & 10"
17	Pine	Preserve	Outside Site Limits	6"	5	
18	Juniper	Preserve	Outside Site Limits	4"	5	
19	Cottonwood	Preserve	Outside Site Limits	9"	5	
20	Cottonwood	Preserve	Outside Site Limits	9"	5	
21	Elm	Preserve	Outside Site Limits	13"	5	
22	Juniper	Preserve	Outside Site Limits	4"	5	
23	Juniper	Preserve	Outside Site Limits	5"	5	

Proposed Tree Planting Summary (Phase 1)

Phase 1 Tree Planting Summary			
	Quantity	Size (Dia. In Inches)	Total (Dia. In Inches)
Overstory Trees	116	2.5	290
Evergreen Trees	43	2.5	107.5
Ornamental Trees	24	1.5	36
Total Proposed Tree Plantings (Phase 1)			433.5
Future Phases Tree Planting Summary			
	Quantity	Size (Dia. In Inches)	Total (Dia. In Inches)
Overstory Trees	100	2.5	250
Evergreen Trees	15	2.5	37.5
Ornamental Trees	45	1.5	67.5
Total Proposed Tree Plantings (Future Phases)			355
Overall Site Tree Plantings			788.5



Legend

- Property Limits
- Buildings
- Water Quality Treatment Ponds
- Pond Contours
- Roadway Linework
- Right of Way
- Significant Trees (1,146)
- Invasive Species (21)
- Trees within Proposed Water Treatment Ponds (110)

0 200 Feet

Source: MnGeo Imagery

Map Document: H:\PSD\LLC_PRR\16113129\GIS\ESRI\Anoka County Coordinates\Trees.mxd | Date Saved: 7/16/2017 11:37:00 AM

Ramsey Business Park Site Tree Preservation Plan Tree Survey

PSD, LLC

Prepared By:

Bolton & Menk, Inc.

7533 Sunwood Drive NW #206

Ramsey, MN 55303

(763) 433-2851

Tree ID	Tree Type	Remove/Preserve	Reason for Removal	Size (DBH)	Condition	Notes
0	Pine	Remove	General Site Improvements	6"	5	
1	Juniper	Remove	General Site Improvements	5"	5	
2	Pine	Remove	General Site Improvements	6"	5	
3	Pine	Remove	General Site Improvements	5"	5	
4	Pine	Remove	General Site Improvements	4"	5	
5	Pine	Remove	General Site Improvements	7"	5	
6	Pine	Remove	General Site Improvements	6"	5	
7	Pine	Remove	General Site Improvements	6"	5	Multi-Trunk: 6" & 4"
8	Pine	Remove	General Site Improvements	5"	5	
9	Pine	Remove	General Site Improvements	5"	5	
10	Pine	Remove	General Site Improvements	6"	5	
11	Pine	Remove	General Site Improvements	6"	5	
12	Pine	Remove	General Site Improvements	6"	5	
13	Pine	Remove	General Site Improvements	6"	5	
14	Pine	Remove	General Site Improvements	7"	5	
15	Pine	Remove	General Site Improvements	4"	5	
16	Pine	Remove	General Site Improvements	6"	5	
17	Pine	Remove	General Site Improvements	7"	5	
18	Pine	Remove	General Site Improvements	5"	5	
19	Pine	Remove	General Site Improvements	7"	5	
20	Pine	Remove	General Site Improvements	6"	5	
21	Pine	Remove	General Site Improvements	5"	5	
22	Pine	Remove	General Site Improvements	6"	5	
23	Pine	Remove	General Site Improvements	6"	5	
24	Pine	Remove	General Site Improvements	9"	5	
25	Pine	Remove	General Site Improvements	6"	5	
26	Pine	Remove	General Site Improvements	6"	5	
27	Pine	Remove	General Site Improvements	10"	5	
28	Pine	Remove	General Site Improvements	8"	5	
29	Juniper	Remove	General Site Improvements	4"	5	
30	Pine	Remove	General Site Improvements	7"	5	
31	Pine	Remove	General Site Improvements	7"	5	
32	Pine	Remove	General Site Improvements	6"	5	
33	Pine	Remove	General Site Improvements	7"	5	
34	Pine	Remove	General Site Improvements	5"	5	
35	Pine	Remove	General Site Improvements	5"	5	
36	Pine	Remove	General Site Improvements	6"	5	
37	Pine	Remove	General Site Improvements	6"	5	
38	Pine	Remove	General Site Improvements	5"	5	
39	Pine	Remove	General Site Improvements	4"	5	
40	Pine	Remove	General Site Improvements	5"	5	
41	Pine	Remove	General Site Improvements	5"	5	
42	Pine	Remove	General Site Improvements	4"	5	
43	Pine	Remove	General Site Improvements	6"	5	
44	Pine	Remove	General Site Improvements	6"	5	
45	Pine	Remove	General Site Improvements	4"	5	
46	Pine	Remove	General Site Improvements	5"	5	
47	Pine	Remove	General Site Improvements	4"	5	
48	Pine	Remove	General Site Improvements	4"	5	
49	Pine	Remove	General Site Improvements	5"	5	
50	Pine	Remove	General Site Improvements	6"	5	
51	Pine	Remove	General Site Improvements	7"	5	
52	Pine	Remove	General Site Improvements	6"	5	
53	Pine	Remove	General Site Improvements	7"	5	
54	Pine	Remove	General Site Improvements	4"	5	
55	Pine	Remove	General Site Improvements	6"	5	
56	Pine	Remove	General Site Improvements	5"	5	
57	Pine	Remove	General Site Improvements	9"	5	
58	Pine	Remove	General Site Improvements	6"	5	

Tree ID	Tree Type	Remove/Preserve	Reason for Removal	Size (DBH)	Condition	Notes
59	Pine	Remove	General Site Improvements	6"	5	
60	Pine	Remove	General Site Improvements	6"	5	
61	Pine	Remove	General Site Improvements	6"	5	
62	Pine	Remove	General Site Improvements	7"	5	
63	Pine	Remove	General Site Improvements	6"	5	
64	Pine	Remove	General Site Improvements	6"	5	
65	Pine	Remove	General Site Improvements	6"	5	
66	Pine	Remove	General Site Improvements	8"	5	
67	Pine	Remove	General Site Improvements	7"	5	
68	Pine	Remove	General Site Improvements	6"	5	
69	Pine	Remove	General Site Improvements	6"	5	
70	Pine	Remove	General Site Improvements	6"	5	
71	Pine	Remove	General Site Improvements	8"	5	
72	Pine	Remove	General Site Improvements	4"	5	
73	Pine	Remove	General Site Improvements	5"	5	
74	Pine	Remove	General Site Improvements	5"	5	
75	Pine	Remove	General Site Improvements	5"	5	
76	Pine	Remove	General Site Improvements	6"	5	
77	Pine	Remove	General Site Improvements	6"	5	
78	Pine	Remove	General Site Improvements	6"	5	
79	Pine	Remove	General Site Improvements	5"	5	
80	Pine	Remove	General Site Improvements	8"	5	
81	Pine	Remove	General Site Improvements	5"	5	
82	Pine	Remove	General Site Improvements	7"	5	
83	Pine	Remove	General Site Improvements	6"	5	
84	Pine	Remove	General Site Improvements	6"	5	
85	Pine	Remove	General Site Improvements	4"	5	
86	Pine	Remove	General Site Improvements	8"	5	
87	Pine	Remove	General Site Improvements	7"	5	
88	Pine	Remove	General Site Improvements	4"	5	Multi-Trunk: 4" & 4"
89	Pine	Remove	General Site Improvements	6"	5	
90	Juniper	Remove	General Site Improvements	4"	5	
91	Juniper	Remove	General Site Improvements	5"	5	
92	Juniper	Remove	General Site Improvements	6"	5	
93	Juniper	Remove	General Site Improvements	7"	5	
94	Juniper	Remove	General Site Improvements	5"	5	
95	Juniper	Remove	General Site Improvements	6"	5	
96	Juniper	Remove	General Site Improvements	5"	5	
97	Juniper	Remove	General Site Improvements	4"	5	
98	Juniper	Remove	General Site Improvements	5"	5	
99	Juniper	Remove	General Site Improvements	6"	5	Multi-Trunk: 6" & 4"
100	Juniper	Remove	General Site Improvements	7"	5	
101	Spruce	Remove	General Site Improvements	17"	5	
102	Pine	Remove	General Site Improvements	6"	5	
103	Juniper	Remove	General Site Improvements	8"	5	Multi-Trunk: 8" & 5"
104	Pine	Remove	General Site Improvements	7"	5	
105	Pine	Remove	General Site Improvements	6"	5	Multi-Trunk: 6" & 6"
106	Pine	Remove	General Site Improvements	5"	5	
107	Pine	Remove	General Site Improvements	6"	5	
108	Juniper	Remove	General Site Improvements	5"	5	
109	Juniper	Remove	General Site Improvements	4"	5	
110	Pine	Remove	General Site Improvements	5"	5	
111	Pine	Remove	General Site Improvements	5"	5	
112	Pine	Remove	General Site Improvements	6"	5	
113	Juniper	Remove	General Site Improvements	4"	5	
114	Pine	Remove	General Site Improvements	5"	5	
115	Pine	Remove	General Site Improvements	5"	5	
116	Pine	Remove	General Site Improvements	5"	5	
117	Pine	Remove	General Site Improvements	4"	5	
118	Pine	Remove	General Site Improvements	8"	5	
119	Pine	Remove	General Site Improvements	5"	5	
120	Pine	Remove	General Site Improvements	4"	5	
121	Pine	Remove	General Site Improvements	5"	5	
122	Pine	Remove	General Site Improvements	4"	5	
123	Pine	Remove	General Site Improvements	7"	5	
124	Pine	Remove	General Site Improvements	4"	2	
125	Pine	Remove	General Site Improvements	5"	5	
126	Pine	Remove	General Site Improvements	4"	5	
127	Pine	Remove	General Site Improvements	5"	5	
128	Pine	Remove	General Site Improvements	7"	5	

Tree ID	Tree Type	Remove/Preserve	Reason for Removal	Size (DBH)	Condition	Notes
129	Pine	Remove	General Site Improvements	4"	5	
130	Pine	Remove	General Site Improvements	5"	5	
131	Pine	Remove	General Site Improvements	4"	3	
132	Pine	Remove	General Site Improvements	5"	5	
133	Pine	Remove	General Site Improvements	5"	5	
134	Pine	Remove	General Site Improvements	8"	5	
135	Pine	Remove	General Site Improvements	5"	4	
136	Pine	Remove	General Site Improvements	6"	5	
137	Pine	Remove	General Site Improvements	5"	5	
138	Pine	Remove	General Site Improvements	6"	5	
139	Pine	Remove	General Site Improvements	6"	5	
140	Pine	Remove	General Site Improvements	5"	5	
141	Pine	Remove	General Site Improvements	4"	5	
142	Pine	Remove	General Site Improvements	5"	5	
143	Pine	Remove	General Site Improvements	6"	5	
144	Pine	Remove	General Site Improvements	7"	5	
145	Pine	Remove	General Site Improvements	5"	5	
146	Pine	Remove	General Site Improvements	4"	5	
147	Pine	Remove	General Site Improvements	5"	5	
148	Pine	Remove	General Site Improvements	6"	5	
149	Pine	Remove	General Site Improvements	4"	5	
150	Pine	Remove	General Site Improvements	6"	5	
151	Pine	Remove	General Site Improvements	5"	5	
152	Pine	Remove	General Site Improvements	4"	3	
153	Pine	Remove	General Site Improvements	6"	5	
154	Pine	Remove	General Site Improvements	5"	5	Multi-Trunk: 5" & 5"
155	Pine	Remove	General Site Improvements	5"	5	
156	Pine	Remove	General Site Improvements	11"	5	
157	Pine	Remove	General Site Improvements	6"	5	
158	Pine	Remove	General Site Improvements	9"	5	
159	Pine	Remove	General Site Improvements	6"	5	
160	Pine	Remove	General Site Improvements	6"	5	
161	Pine	Remove	General Site Improvements	5"	5	
162	Pine	Remove	General Site Improvements	9"	5	
163	Juniper	Remove	General Site Improvements	4"	5	
164	Pine	Remove	General Site Improvements	12"	5	
165	Juniper	Remove	General Site Improvements	4"	5	
166	Juniper	Remove	General Site Improvements	4"	5	
167	Pine	Remove	General Site Improvements	9"	5	
168	Pine	Remove	General Site Improvements	5"	5	
169	Juniper	Remove	General Site Improvements	4"	5	
170	Pine	Remove	General Site Improvements	4"	5	Multi-Trunk: 4" & 4"
171	Pine	Remove	General Site Improvements	6"	5	Multi-Trunk: 6" & 5"
172	Pine	Remove	General Site Improvements	6"	5	
173	Pine	Remove	General Site Improvements	6"	5	Multi-Trunk: 6", 5" & 5"
174	Pine	Remove	General Site Improvements	5"	5	
175	Pine	Remove	General Site Improvements	6"	5	
176	Pine	Remove	General Site Improvements	6"	5	Multi-Trunk: 6" & 4"
177	Pine	Remove	General Site Improvements	4"	5	
178	Pine	Remove	General Site Improvements	5"	5	
179	Pine	Remove	General Site Improvements	6"	5	
180	Pine	Remove	General Site Improvements	4"	5	
181	Pine	Remove	General Site Improvements	5"	5	
182	Juniper	Remove	General Site Improvements	4"	5	
183	Pine	Remove	General Site Improvements	4"	5	
184	Pine	Remove	General Site Improvements	5"	5	
185	Pine	Remove	General Site Improvements	4"	5	
186	Pine	Remove	General Site Improvements	5"	5	
187	Pine	Remove	General Site Improvements	4"	5	
188	Pine	Remove	General Site Improvements	4"	5	
189	Pine	Remove	General Site Improvements	4"	5	
190	Pine	Remove	General Site Improvements	5"	3	
191	Pine	Remove	General Site Improvements	6"	5	
192	Pine	Remove	General Site Improvements	4"	5	
193	Pine	Remove	General Site Improvements	4"	5	
194	Pine	Remove	General Site Improvements	4"	5	
195	Pine	Remove	General Site Improvements	6"	5	
196	Pine	Remove	General Site Improvements	5"	5	
197	Pine	Remove	General Site Improvements	7"	5	
198	Pine	Remove	General Site Improvements	6"	5	

Tree ID	Tree Type	Remove/Preserve	Reason for Removal	Size (DBH)	Condition	Notes
199	Pine	Remove	General Site Improvements	5"	5	
200	Pine	Remove	General Site Improvements	5"	5	Multi-Trunk: 5" & 4"
201	Pine	Remove	General Site Improvements	6"	5	
202	Pine	Remove	General Site Improvements	7"	5	
203	Pine	Remove	General Site Improvements	6"	5	
204	Juniper	Remove	General Site Improvements	4"	5	
205	Juniper	Remove	General Site Improvements	5"	5	
206	Pine	Remove	General Site Improvements	5"	5	
207	Pine	Remove	General Site Improvements	5"	5	
208	Pine	Remove	General Site Improvements	6"	5	
209	Pine	Remove	General Site Improvements	7"	5	
210	Pine	Remove	General Site Improvements	5"	5	
211	Pine	Remove	General Site Improvements	6"	5	
212	Pine	Remove	General Site Improvements	5"	5	
213	Pine	Remove	General Site Improvements	6"	5	
214	Pine	Remove	General Site Improvements	4"	5	
215	Pine	Remove	General Site Improvements	4"	5	
216	Pine	Remove	General Site Improvements	6"	5	
217	Pine	Remove	General Site Improvements	4"	5	
218	Pine	Remove	General Site Improvements	6"	5	
219	Pine	Remove	General Site Improvements	6"	5	
220	Pine	Remove	General Site Improvements	5"	5	
221	Pine	Remove	General Site Improvements	5"	5	
222	Pine	Remove	General Site Improvements	4"	5	
223	Pine	Remove	General Site Improvements	6"	5	
224	Pine	Remove	General Site Improvements	6"	5	
225	Pine	Remove	General Site Improvements	5"	5	
226	Pine	Remove	General Site Improvements	6"	5	
227	Pine	Remove	General Site Improvements	5"	5	
228	Pine	Remove	General Site Improvements	5"	5	
229	Pine	Remove	General Site Improvements	6"	5	
230	Pine	Remove	General Site Improvements	5"	5	
231	Pine	Remove	General Site Improvements	5"	5	
232	Pine	Remove	General Site Improvements	4"	5	
233	Pine	Remove	General Site Improvements	4"	5	
234	Pine	Remove	General Site Improvements	8"	5	
235	Pine	Remove	General Site Improvements	4"	5	
236	Pine	Remove	General Site Improvements	7"	5	
237	Pine	Remove	General Site Improvements	4"	5	
238	Pine	Remove	General Site Improvements	5"	5	
239	Pine	Remove	General Site Improvements	5"	5	
240	Pine	Remove	General Site Improvements	5"	5	
241	Pine	Remove	General Site Improvements	7"	5	
242	Pine	Remove	General Site Improvements	5"	5	
243	Pine	Remove	General Site Improvements	4"	5	
244	Pine	Remove	General Site Improvements	4"	5	
245	Juniper	Remove	General Site Improvements	5"	5	
246	Pine	Remove	General Site Improvements	5"	5	
247	Pine	Remove	General Site Improvements	7"	5	
248	Pine	Remove	General Site Improvements	5"	5	
249	Pine	Remove	General Site Improvements	5"	5	
250	Pine	Remove	General Site Improvements	6"	5	
251	Pine	Remove	General Site Improvements	6"	5	
252	Pine	Remove	General Site Improvements	4"	5	
253	Pine	Remove	General Site Improvements	8"	5	
254	Pine	Remove	General Site Improvements	4"	5	
255	Pine	Remove	General Site Improvements	4"	5	
256	Pine	Remove	General Site Improvements	6"	5	
257	Pine	Remove	General Site Improvements	6"	5	
258	Pine	Remove	General Site Improvements	6"	5	
259	Pine	Remove	General Site Improvements	5"	5	
260	Pine	Remove	General Site Improvements	5"	5	
261	Pine	Remove	General Site Improvements	6"	5	Multi-Trunk: 6" & 6"
262	Pine	Remove	General Site Improvements	8"	5	
263	Pine	Remove	General Site Improvements	7"	5	
264	Pine	Remove	General Site Improvements	5"	5	
265	Pine	Remove	General Site Improvements	5"	5	
266	Pine	Remove	General Site Improvements	5"	5	
267	Pine	Remove	General Site Improvements	5"	5	
268	Pine	Remove	General Site Improvements	5"	5	

Tree ID	Tree Type	Remove/Preserve	Reason for Removal	Size (DBH)	Condition	Notes
269	Pine	Remove	General Site Improvements	5"	5	
270	Juniper	Remove	General Site Improvements	4"	5	
271	Juniper	Remove	General Site Improvements	5"	5	
272	Pine	Remove	General Site Improvements	5"	3	
273	Pine	Remove	General Site Improvements	6"	5	
274	Pine	Remove	General Site Improvements	4"	5	
275	Pine	Remove	General Site Improvements	5"	5	
276	Pine	Remove	General Site Improvements	4"	5	
277	Pine	Remove	General Site Improvements	8"	5	
278	Pine	Remove	General Site Improvements	4"	5	
279	Pine	Remove	General Site Improvements	8"	5	
280	Pine	Remove	General Site Improvements	6"	5	Multi-Trunk: 6", 6" & 5"
281	Pine	Remove	General Site Improvements	5"	5	
282	Pine	Remove	General Site Improvements	5"	5	
283	Pine	Remove	General Site Improvements	6"	5	Multi-Trunk: 6" & 5"
284	Juniper	Remove	General Site Improvements	4"	5	
285	Pine	Remove	General Site Improvements	6"	5	
286	Spruce	Remove	General Site Improvements	9"	5	
287	Spruce	Remove	General Site Improvements	5"	5	
288	Spruce	Remove	General Site Improvements	4"	5	
289	Spruce	Remove	General Site Improvements	9"	5	
290	Spruce	Remove	General Site Improvements	6"	5	Multi-Trunk: 6" & 5"
291	Spruce	Remove	General Site Improvements	6"	5	Multi-Trunk: 6" & 6"
292	Spruce	Remove	General Site Improvements	7"	5	Multi-Trunk: 7" & 6"
293	Spruce	Remove	General Site Improvements	9"	5	Multi-Trunk: 9" & 6"
294	Pine	Remove	General Site Improvements	6"	5	
295	Spruce	Remove	General Site Improvements	8"	3	
296	Spruce	Remove	General Site Improvements	6"	5	Multi-Trunk: 6" & 6"
297	Spruce	Remove	General Site Improvements	10"	5	
298	Pine	Remove	General Site Improvements	5"	5	
299	Spruce	Remove	General Site Improvements	10"	5	
300	Spruce	Remove	General Site Improvements	12"	5	
301	Spruce	Remove	General Site Improvements	6"	5	
302	Spruce	Remove	General Site Improvements	4"	5	Multi-Trunk: 4" & 4"
303	Spruce	Remove	General Site Improvements	8"	5	Multi-Trunk: 8" & 4"
304	Pine	Remove	General Site Improvements	6"	5	
305	Spruce	Remove	General Site Improvements	7"	5	Multi-Trunk: 7" & 6"
306	Pine	Remove	General Site Improvements	4"	5	
307	Spruce	Remove	General Site Improvements	8"	5	Multi-Trunk: 8" & 6"
308	Pine	Remove	General Site Improvements	5"	5	
309	Pine	Remove	General Site Improvements	4"	5	
310	Pine	Remove	General Site Improvements	7"	5	
311	Pine	Remove	General Site Improvements	4"	5	
312	Pine	Remove	General Site Improvements	4"	5	
313	Pine	Remove	General Site Improvements	4"	5	
314	Pine	Remove	General Site Improvements	4"	5	
315	Pine	Remove	General Site Improvements	9"	5	
316	Spruce	Remove	General Site Improvements	6"	5	Multi-Trunk: 6" & 6"
317	Spruce	Remove	General Site Improvements	8"	5	
318	Spruce	Remove	General Site Improvements	10"	5	Multi-Trunk: 10" & 7"
319	Spruce	Remove	General Site Improvements	11"	5	
320	Spruce	Remove	General Site Improvements	10"	5	
321	Spruce	Remove	General Site Improvements	5"	5	
322	Pine	Remove	General Site Improvements	4"	5	
323	Spruce	Remove	General Site Improvements	6"	5	
324	Spruce	Remove	General Site Improvements	7"	5	
325	Spruce	Remove	General Site Improvements	7"	5	
326	Spruce	Remove	General Site Improvements	6"	5	Multi-Trunk: 6" & 5"
327	Spruce	Remove	General Site Improvements	9"	5	
328	Pine	Remove	General Site Improvements	7"	5	
329	Pine	Remove	General Site Improvements	7"	5	Multi-Trunk: 7" & 6"
330	Juniper	Remove	General Site Improvements	4"	5	
331	Juniper	Remove	General Site Improvements	6"	5	
332	Pine	Remove	General Site Improvements	5"	5	
333	Pine	Remove	General Site Improvements	6"	5	
334	Pine	Remove	General Site Improvements	6"	5	
335	Pine	Remove	General Site Improvements	5"	5	
336	Pine	Remove	General Site Improvements	5"	5	
337	Pine	Remove	General Site Improvements	6"	5	
338	Pine	Remove	General Site Improvements	4"	5	

Tree ID	Tree Type	Remove/Preserve	Reason for Removal	Size (DBH)	Condition	Notes
339	Pine	Remove	General Site Improvements	5"	5	
340	Pine	Remove	General Site Improvements	5"	5	
341	Pine	Remove	General Site Improvements	5"	5	
342	Pine	Remove	General Site Improvements	6"	5	
343	Pine	Remove	General Site Improvements	5"	5	
344	Pine	Remove	General Site Improvements	7"	5	
345	Pine	Remove	General Site Improvements	5"	5	
346	Pine	Remove	General Site Improvements	5"	5	
347	Pine	Remove	General Site Improvements	6"	5	
348	Pine	Remove	General Site Improvements	6"	5	
349	Pine	Remove	General Site Improvements	5"	5	
350	Pine	Remove	General Site Improvements	5"	3	
351	Pine	Remove	General Site Improvements	4"	5	
352	Pine	Remove	General Site Improvements	4"	5	
353	Pine	Remove	General Site Improvements	6"	5	
354	Pine	Remove	General Site Improvements	7"	5	
355	Pine	Remove	General Site Improvements	7"	5	
356	Pine	Remove	General Site Improvements	7"	5	
357	Pine	Remove	General Site Improvements	5"	5	
358	Pine	Remove	General Site Improvements	6"	5	
359	Pine	Remove	General Site Improvements	6"	5	
360	Pine	Remove	General Site Improvements	6"	5	Multi-Trunk: 6" & 5"
361	Pine	Remove	General Site Improvements	6"	5	
362	Pine	Remove	General Site Improvements	5"	5	Multi-Trunk: 5" & 4"
363	Pine	Remove	General Site Improvements	5"	5	
364	Pine	Remove	General Site Improvements	4"	5	
365	Pine	Remove	General Site Improvements	6"	5	
366	Pine	Remove	General Site Improvements	6"	5	
367	Pine	Remove	General Site Improvements	4"	5	
368	Pine	Remove	General Site Improvements	5"	5	
369	Pine	Remove	General Site Improvements	4"	5	
370	Pine	Remove	General Site Improvements	6"	3	
371	Pine	Remove	General Site Improvements	5"	5	
372	Pine	Remove	General Site Improvements	5"	5	
373	Pine	Remove	General Site Improvements	5"	5	
374	Pine	Remove	General Site Improvements	6"	5	
375	Pine	Remove	General Site Improvements	6"	5	
376	Pine	Remove	General Site Improvements	5"	5	
377	Pine	Remove	General Site Improvements	6"	5	
378	Pine	Remove	General Site Improvements	7"	5	
379	Pine	Remove	General Site Improvements	4"	5	
380	Pine	Remove	General Site Improvements	6"	5	
381	Pine	Remove	General Site Improvements	6"	5	
382	Pine	Remove	General Site Improvements	4"	5	
383	Pine	Remove	General Site Improvements	6"	5	
384	Pine	Remove	General Site Improvements	7"	5	
385	Pine	Remove	General Site Improvements	5"	5	
386	Pine	Remove	General Site Improvements	7"	5	
387	Pine	Remove	General Site Improvements	7"	5	
388	Pine	Remove	General Site Improvements	8"	5	
389	Pine	Remove	General Site Improvements	5"	5	
390	Pine	Remove	General Site Improvements	5"	5	
391	Pine	Remove	General Site Improvements	5"	5	
392	Pine	Remove	General Site Improvements	4"	5	
393	Pine	Remove	General Site Improvements	5"	5	
394	Pine	Remove	General Site Improvements	5"	5	
395	Pine	Remove	General Site Improvements	6"	5	
396	Juniper	Remove	General Site Improvements	4"	5	
397	Spruce	Remove	General Site Improvements	22"	5	
398	Juniper	Remove	General Site Improvements	4"	5	
399	Spruce	Remove	General Site Improvements	20"	5	
400	Spruce	Remove	General Site Improvements	19"	5	
401	Spruce	Remove	General Site Improvements	25"	5	
402	Ash	Remove	General Site Improvements	7"	5	Multi-Trunk: 7" & 4"
403	Juniper	Remove	General Site Improvements	4"	5	
404	Juniper	Remove	General Site Improvements	4"	5	
405	Juniper	Remove	General Site Improvements	4"	5	
406	Juniper	Remove	General Site Improvements	4"	5	
407	Spruce	Remove	General Site Improvements	12"	5	
408	Juniper	Remove	General Site Improvements	6"	5	

Tree ID	Tree Type	Remove/Preserve	Reason for Removal	Size (DBH)	Condition	Notes
409	Juniper	Remove	General Site Improvements	4"	5	
410	Juniper	Remove	General Site Improvements	4"	5	
411	Juniper	Remove	General Site Improvements	4"	5	
412	Juniper	Remove	General Site Improvements	4"	5	
413	Juniper	Remove	General Site Improvements	5"	5	
414	Juniper	Remove	General Site Improvements	4"	5	
415	Juniper	Remove	General Site Improvements	4"	5	
416	Juniper	Remove	General Site Improvements	4"	5	
417	Juniper	Remove	General Site Improvements	5"	5	
418	Juniper	Remove	General Site Improvements	6"	5	
419	Juniper	Remove	General Site Improvements	6"	5	
420	Juniper	Remove	General Site Improvements	4"	5	
421	Juniper	Remove	General Site Improvements	4"	5	
422	Juniper	Remove	General Site Improvements	4"	5	
423	Spruce	Remove	General Site Improvements	23"	5	
424	Spruce	Remove	General Site Improvements	24"	5	
425	Juniper	Remove	General Site Improvements	4"	5	
426	Juniper	Remove	General Site Improvements	4"	5	
427	Spruce	Remove	General Site Improvements	22"	5	
428	Juniper	Remove	General Site Improvements	4"	5	
429	Juniper	Remove	General Site Improvements	6"	5	
430	Juniper	Remove	General Site Improvements	6"	5	Multi-Trunk: 6", 5", 5" & 4"
431	Juniper	Remove	General Site Improvements	7"	5	
432	Juniper	Remove	General Site Improvements	9"	5	
433	Spruce	Remove	General Site Improvements	20"	5	Multi-Trunk: 20" & 20"
434	Cherry	Remove	General Site Improvements	12"	5	Multi-Trunk: 12" & 10"
435	Spruce	Remove	General Site Improvements	19"	5	
436	Spruce	Remove	General Site Improvements	23"	5	
437	Juniper	Remove	General Site Improvements	5"	5	
438	Spruce	Remove	General Site Improvements	24"	5	
439	Juniper	Remove	General Site Improvements	4"	5	
440	Juniper	Remove	General Site Improvements	5"	5	
441	Juniper	Remove	General Site Improvements	5"	5	
442	Spruce	Remove	General Site Improvements	30"	5	
443	Spruce	Remove	General Site Improvements	18"	5	
444	Juniper	Remove	General Site Improvements	4"	5	
445	Spruce	Remove	General Site Improvements	20"	5	
446	Pine	Remove	General Site Improvements	4"	5	
447	Spruce	Remove	General Site Improvements	5"	5	
448	Juniper	Remove	General Site Improvements	6"	5	
449	Pine	Remove	General Site Improvements	6"	5	
450	Pine	Remove	General Site Improvements	5"	5	
451	Pine	Remove	General Site Improvements	8"	5	Multi-Trunk: 8" & 7"
452	Pine	Remove	General Site Improvements	5"	5	
453	Pine	Remove	General Site Improvements	4"	5	
454	Pine	Remove	General Site Improvements	6"	5	
455	Pine	Remove	General Site Improvements	7"	5	
456	Pine	Remove	General Site Improvements	7"	5	
457	Pine	Remove	General Site Improvements	5"	5	
458	Juniper	Remove	General Site Improvements	5"	5	
459	Pine	Remove	General Site Improvements	5"	5	
460	Pine	Remove	General Site Improvements	6"	5	Multi-Trunk: 6" & 6"
461	Pine	Remove	General Site Improvements	6"	5	
462	Pine	Remove	General Site Improvements	4"	5	
463	Pine	Remove	General Site Improvements	6"	5	
464	Pine	Remove	General Site Improvements	5"	5	
465	Pine	Remove	General Site Improvements	4"	5	
466	Juniper	Remove	General Site Improvements	4"	5	
467	Juniper	Remove	General Site Improvements	4"	5	
468	Pine	Remove	General Site Improvements	6"	5	
469	Juniper	Remove	General Site Improvements	4"	5	
470	Juniper	Remove	General Site Improvements	5"	5	
471	Spruce	Remove	General Site Improvements	13"	3	
472	Spruce	Remove	General Site Improvements	12"	4	
473	Spruce	Remove	General Site Improvements	12"	5	Multi-Trunk: 12" & 12"
474	Juniper	Remove	General Site Improvements	5"	5	
475	Spruce	Remove	General Site Improvements	13"	5	Multi-Trunk: 14" & 13"
476	Juniper	Remove	General Site Improvements	4"	5	
477	Spruce	Remove	General Site Improvements	6"	5	
478	Spruce	Remove	General Site Improvements	6"	5	

Tree ID	Tree Type	Remove/Preserve	Reason for Removal	Size (DBH)	Condition	Notes
479	Spruce	Remove	General Site Improvements	5"	5	
480	Pine	Remove	General Site Improvements	5"	5	
481	Pine	Remove	General Site Improvements	4"	5	
482	Pine	Remove	General Site Improvements	5"	5	
483	Pine	Remove	General Site Improvements	7"	5	
484	Juniper	Remove	General Site Improvements	5"	5	
485	Pine	Remove	General Site Improvements	7"	5	
486	Pine	Remove	General Site Improvements	5"	5	
487	Juniper	Remove	General Site Improvements	5"	5	
488	Pine	Remove	General Site Improvements	6"	5	
489	Pine	Remove	General Site Improvements	6"	5	
490	Pine	Remove	General Site Improvements	13"	5	
491	Pine	Remove	General Site Improvements	6"	5	Multi-Trunk: 6" & 5"
492	Pine	Remove	General Site Improvements	5"	5	
493	Spruce	Remove	General Site Improvements	13"	5	
494	Spruce	Remove	General Site Improvements	7"	5	
495	Pine	Remove	General Site Improvements	6"	5	
496	Pine	Remove	General Site Improvements	7"	5	
497	Pine	Remove	General Site Improvements	6"	5	
498	Pine	Remove	General Site Improvements	8"	5	
499	Pine	Remove	General Site Improvements	6"	5	
500	Pine	Remove	General Site Improvements	6"	5	
501	Pine	Remove	General Site Improvements	6"	5	
502	Pine	Remove	General Site Improvements	4"	5	
503	Juniper	Remove	General Site Improvements	5"	5	
504	Pine	Remove	General Site Improvements	7"	5	
505	Pine	Remove	General Site Improvements	12"	5	
506	Pine	Remove	General Site Improvements	8"	5	
507	Juniper	Remove	General Site Improvements	4"	5	
508	Pine	Remove	General Site Improvements	6"	5	Multi-Trunk: 6" & 6"
509	Pine	Remove	General Site Improvements	12"	5	
510	Pine	Remove	General Site Improvements	8"	5	Multi-Trunk: 8" & 7"
511	Pine	Remove	General Site Improvements	11"	5	
512	Pine	Remove	General Site Improvements	5"	3	
513	Pine	Remove	General Site Improvements	5"	3	
514	Pine	Remove	General Site Improvements	6"	5	
515	Pine	Remove	General Site Improvements	4"	3	
516	Pine	Remove	General Site Improvements	4"	3	
517	Pine	Remove	General Site Improvements	4"	5	
518	Pine	Remove	General Site Improvements	4"	5	
519	Pine	Remove	General Site Improvements	6"	4	
520	Pine	Remove	General Site Improvements	5"	5	
521	Pine	Remove	General Site Improvements	7"	5	
522	Pine	Remove	General Site Improvements	6"	5	
523	Pine	Remove	General Site Improvements	6"	5	
524	Pine	Remove	General Site Improvements	6"	5	
525	Pine	Remove	General Site Improvements	4"	5	
526	Pine	Remove	General Site Improvements	6"	5	
527	Pine	Remove	General Site Improvements	7"	5	
528	Pine	Remove	General Site Improvements	4"	5	
529	Pine	Remove	General Site Improvements	6"	5	
530	Pine	Remove	General Site Improvements	7"	5	
531	Pine	Remove	General Site Improvements	6"	5	
532	Pine	Remove	General Site Improvements	6"	3	
533	Pine	Remove	General Site Improvements	7"	5	
534	Juniper	Remove	General Site Improvements	4"	5	
535	Juniper	Remove	General Site Improvements	5"	5	Multi-Trunk: 5", 4" & 4"
536	Juniper	Remove	General Site Improvements	8"	5	Multi-Trunk: 8", 6" & 4"
537	Juniper	Remove	General Site Improvements	4"	5	
538	Pine	Remove	General Site Improvements	8"	5	
539	Juniper	Remove	General Site Improvements	4"	5	
540	Juniper	Remove	General Site Improvements	4"	5	
541	Juniper	Remove	General Site Improvements	4"	2	
542	Pine	Remove	General Site Improvements	5"	5	
543	Juniper	Remove	General Site Improvements	4"	5	
544	Juniper	Remove	General Site Improvements	4"	5	
545	Juniper	Remove	General Site Improvements	5"	5	
546	Juniper	Remove	General Site Improvements	5"	5	
547	Juniper	Remove	General Site Improvements	4"	5	
548	Pine	Remove	General Site Improvements	6"	3	Multi-Trunk: 6", 4" & 4"

Tree ID	Tree Type	Remove/Preserve	Reason for Removal	Size (DBH)	Condition	Notes
549	Pine	Remove	General Site Improvements	5"	5	
550	Pine	Remove	General Site Improvements	7"	4	
551	Juniper	Remove	General Site Improvements	4"	5	
552	Juniper	Remove	General Site Improvements	4"	5	
553	Pine	Remove	General Site Improvements	5"	5	
554	Pine	Remove	General Site Improvements	4"	5	
555	Pine	Remove	General Site Improvements	5"	5	
556	Pine	Remove	General Site Improvements	4"	5	
557	Pine	Remove	General Site Improvements	6"	5	
558	Pine	Remove	General Site Improvements	6"	5	
559	Pine	Remove	General Site Improvements	6"	5	
560	Juniper	Remove	General Site Improvements	4"	5	
561	Juniper	Remove	General Site Improvements	4"	5	
562	Juniper	Remove	General Site Improvements	4"	2	
563	Pine	Remove	General Site Improvements	6"	5	
564	Juniper	Remove	General Site Improvements	4"	5	
565	Box Elder	Remove	General Site Improvements	8"	5	Multi-Trunk: 8", 7", 6" & 5"
566	Juniper	Remove	General Site Improvements	5"	5	
567	Juniper	Remove	General Site Improvements	4"	5	
568	Juniper	Remove	General Site Improvements	4"	5	
569	Juniper	Remove	General Site Improvements	4"	5	
570	Juniper	Remove	General Site Improvements	4"	5	
571	Pine	Remove	General Site Improvements	4"	5	
572	Juniper	Remove	General Site Improvements	5"	5	
573	Juniper	Remove	General Site Improvements	4"	5	
574	Juniper	Remove	General Site Improvements	4"	5	
575	Juniper	Remove	General Site Improvements	4"	5	
576	Pine	Remove	General Site Improvements	4"	5	
577	Juniper	Remove	General Site Improvements	4"	5	
578	Spruce	Remove	General Site Improvements	14"	5	
579	Juniper	Remove	General Site Improvements	5"	5	
580	Spruce	Remove	General Site Improvements	13"	5	
581	Juniper	Remove	General Site Improvements	4"	5	
582	Juniper	Remove	General Site Improvements	4"	5	
583	Spruce	Remove	General Site Improvements	8"	5	Multi-Trunk: 8" & 8"
584	Spruce	Remove	General Site Improvements	12"	5	
585	Juniper	Remove	General Site Improvements	5"	5	
586	Spruce	Remove	General Site Improvements	8"	5	
587	Spruce	Remove	General Site Improvements	7"	3	
588	Spruce	Remove	General Site Improvements	6"	1	
589	Spruce	Remove	General Site Improvements	4"	2	
590	Spruce	Remove	General Site Improvements	8"	5	
591	Spruce	Remove	General Site Improvements	9"	4	
592	Spruce	Remove	General Site Improvements	9"	5	
593	Spruce	Remove	General Site Improvements	5"	4	Multi-Trunk: 5" & 4"
594	Spruce	Remove	General Site Improvements	10"	4	
595	Spruce	Remove	General Site Improvements	7"	4	Multi-Trunk: 7" & 5"
596	Spruce	Remove	General Site Improvements	6"	5	
597	Spruce	Remove	General Site Improvements	6"	3	Multi-Trunk: 6" & 5"
598	Spruce	Remove	General Site Improvements	5"	5	
599	Spruce	Remove	General Site Improvements	4"	5	
600	Spruce	Remove	General Site Improvements	6"	5	Multi-Trunk: 6" & 5"
601	Spruce	Remove	General Site Improvements	8"	5	Multi-Trunk: 8" & 5"
602	Spruce	Remove	General Site Improvements	6"	3	
603	Spruce	Remove	General Site Improvements	4"	2	Multi-Trunk: 4" & 4"
604	Spruce	Remove	General Site Improvements	6"	5	
605	Spruce	Remove	General Site Improvements	4"	5	
606	Spruce	Remove	General Site Improvements	7"	5	Multi-Trunk: 7" & 4"
607	Spruce	Remove	General Site Improvements	11"	3	
608	Spruce	Remove	General Site Improvements	11"	4	
609	Spruce	Remove	General Site Improvements	7"	5	
610	Spruce	Remove	General Site Improvements	6"	4	
611	Spruce	Remove	General Site Improvements	7"	5	
612	Spruce	Remove	General Site Improvements	4"	5	
613	Spruce	Remove	General Site Improvements	8"	4	
614	Spruce	Remove	General Site Improvements	9"	4	
615	Spruce	Remove	General Site Improvements	6"	3	
616	Spruce	Remove	General Site Improvements	6"	5	
617	Spruce	Remove	General Site Improvements	6"	5	
618	Spruce	Remove	General Site Improvements	6"	5	Multi-Trunk: 6" & 5"

Tree ID	Tree Type	Remove/Preserve	Reason for Removal	Size (DBH)	Condition	Notes
619	Spruce	Remove	General Site Improvements	5"	5	
620	Spruce	Remove	General Site Improvements	5"	5	
621	Spruce	Remove	General Site Improvements	5"	5	Multi-Trunk: 5", 5" & 4"
622	Spruce	Remove	General Site Improvements	5"	5	Multi-Trunk: 5", 5" & 4"
623	Spruce	Remove	General Site Improvements	4"	5	
624	Spruce	Remove	General Site Improvements	5"	3	
625	Spruce	Remove	General Site Improvements	6"	3	
626	Spruce	Remove	General Site Improvements	6"	2	
627	Spruce	Remove	General Site Improvements	5"	2	
628	Spruce	Remove	General Site Improvements	8"	5	
629	Spruce	Remove	General Site Improvements	8"	5	
630	Spruce	Remove	General Site Improvements	5"	5	
631	Spruce	Remove	General Site Improvements	4"	2	
632	Spruce	Remove	General Site Improvements	8"	3	Multi-Trunk: 8" & 4"
633	Spruce	Remove	General Site Improvements	6"	5	
634	Spruce	Remove	General Site Improvements	8"	2	
635	Spruce	Remove	General Site Improvements	6"	5	
636	Spruce	Remove	General Site Improvements	4"	5	
637	Spruce	Remove	General Site Improvements	5"	5	
638	Spruce	Remove	General Site Improvements	4"	2	
639	Spruce	Remove	General Site Improvements	5"	2	
640	Spruce	Remove	General Site Improvements	5"	5	
641	Spruce	Remove	General Site Improvements	9"	5	
642	Spruce	Remove	General Site Improvements	7"	5	Multi-Trunk: 7" & 6"
643	Spruce	Remove	General Site Improvements	11"	5	
644	Spruce	Remove	General Site Improvements	4"	3	
645	Spruce	Remove	General Site Improvements	8"	5	
646	Spruce	Remove	General Site Improvements	8"	5	Multi-Trunk: 8" & 8"
647	Juniper	Remove	General Site Improvements	4"	5	
648	Spruce	Remove	General Site Improvements	11"	5	
649	Spruce	Remove	General Site Improvements	7"	3	Multi-Trunk: 7" & 5"
650	Juniper	Remove	General Site Improvements	6"	5	
651	Pine	Remove	General Site Improvements	9"	5	
652	Pine	Remove	General Site Improvements	6"	5	
653	Cottonwood	Remove	General Site Improvements	8"	5	
654	Pine	Remove	General Site Improvements	5"	5	
655	Pine	Remove	General Site Improvements	5"	5	Multi-Trunk: 5" & 5"
656	Pine	Remove	General Site Improvements	5"	5	
657	Pine	Remove	General Site Improvements	5"	5	
658	Pine	Remove	General Site Improvements	7"	5	Multi-Trunk: 6" & 7"
659	Juniper	Remove	General Site Improvements	4"	5	
660	Pine	Remove	General Site Improvements	4"	5	
661	Juniper	Remove	General Site Improvements	4"	5	
662	Oak	Remove	General Site Improvements	4"	5	
663	Pine	Remove	General Site Improvements	4"	5	
664	Pine	Remove	General Site Improvements	6"	5	
665	Pine	Remove	General Site Improvements	5"	5	
666	Juniper	Remove	General Site Improvements	5"	5	
667	Juniper	Remove	General Site Improvements	5"	5	
668	Juniper	Remove	General Site Improvements	5"	5	
669	Pine	Remove	General Site Improvements	5"	1	Dying
670	Pine	Remove	General Site Improvements	6"	5	
671	Pine	Remove	General Site Improvements	6"	5	
672	Pine	Remove	General Site Improvements	5"	5	
673	Pine	Remove	General Site Improvements	4"	5	
674	Pine	Remove	General Site Improvements	6"	5	
675	Pine	Remove	General Site Improvements	5"	5	
676	Pine	Remove	General Site Improvements	5"	5	
677	Pine	Remove	General Site Improvements	4"	1	
678	Pine	Remove	General Site Improvements	4"	5	
679	Pine	Remove	General Site Improvements	5"	5	
680	Pine	Remove	General Site Improvements	4"	5	
681	Pine	Remove	General Site Improvements	7"	5	
682	Pine	Remove	General Site Improvements	5"	5	Multi-Trunk: 4" & 5"
683	Pine	Remove	General Site Improvements	7"	5	
684	Pine	Remove	General Site Improvements	6"	5	
685	Pine	Remove	General Site Improvements	5"	5	
686	Pine	Remove	General Site Improvements	4"	5	
687	Pine	Remove	General Site Improvements	4"	5	
688	Pine	Remove	General Site Improvements	4"	5	

Tree ID	Tree Type	Remove/Preserve	Reason for Removal	Size (DBH)	Condition	Notes
689	Pine	Remove	General Site Improvements	4"	5	
690	Pine	Remove	General Site Improvements	5"	5	
691	Pine	Remove	General Site Improvements	4"	5	
692	Pine	Remove	General Site Improvements	5"	5	
693	Pine	Remove	General Site Improvements	5"	5	
694	Pine	Remove	General Site Improvements	5"	5	
695	Pine	Remove	General Site Improvements	4"	5	
696	Pine	Remove	General Site Improvements	7"	5	
697	Pine	Remove	General Site Improvements	5"	5	
698	Pine	Remove	General Site Improvements	4"	5	
699	Pine	Remove	General Site Improvements	6"	5	
700	Pine	Remove	General Site Improvements	7"	5	
701	Pine	Remove	General Site Improvements	5"	5	
702	Pine	Remove	General Site Improvements	4"	5	
703	Pine	Remove	General Site Improvements	6"	5	
704	Pine	Remove	General Site Improvements	6"	5	
705	Pine	Remove	General Site Improvements	4"	5	
706	Pine	Remove	General Site Improvements	6"	5	
707	Pine	Remove	General Site Improvements	4"	5	
708	Pine	Remove	General Site Improvements	4"	5	
709	Pine	Remove	General Site Improvements	4"	5	
710	Pine	Remove	General Site Improvements	5"	5	
711	Pine	Remove	General Site Improvements	5"	5	
712	Pine	Remove	General Site Improvements	7"	5	
713	Pine	Remove	General Site Improvements	6"	5	
714	Pine	Remove	General Site Improvements	6"	5	
715	Pine	Remove	General Site Improvements	5"	5	
716	Juniper	Remove	General Site Improvements	5"	5	
717	Spruce	Remove	General Site Improvements	5"	5	
718	Juniper	Remove	General Site Improvements	4"	3	
719	Juniper	Remove	General Site Improvements	4"	4	
720	Pine	Remove	General Site Improvements	6"	5	
721	Pine	Remove	General Site Improvements	6"	5	
722	Pine	Remove	General Site Improvements	6"	5	
723	Pine	Remove	General Site Improvements	4"	2	
724	Pine	Remove	General Site Improvements	5"	4	
725	Pine	Remove	General Site Improvements	4"	2	
726	Pine	Remove	General Site Improvements	5"	5	
727	Pine	Remove	General Site Improvements	5"	5	
728	Pine	Remove	General Site Improvements	4"	5	
729	Pine	Remove	General Site Improvements	4"	4	
730	Pine	Remove	General Site Improvements	4"	5	
731	Pine	Remove	General Site Improvements	5"	5	
732	Pine	Remove	General Site Improvements	4"	5	
733	Pine	Remove	General Site Improvements	5"	5	
734	Pine	Remove	General Site Improvements	5"	5	
735	Pine	Remove	General Site Improvements	6"	3	
736	Pine	Remove	General Site Improvements	4"	4	
737	Pine	Remove	General Site Improvements	6"	5	
738	Pine	Remove	General Site Improvements	4"	2	
739	Pine	Remove	General Site Improvements	6"	5	
740	Pine	Remove	General Site Improvements	5"	5	
741	Pine	Remove	General Site Improvements	5"	4	
742	Pine	Remove	General Site Improvements	5"	5	
743	Pine	Remove	General Site Improvements	4"	4	
744	Pine	Remove	General Site Improvements	5"	5	
745	Pine	Remove	General Site Improvements	5"	5	
746	Pine	Remove	General Site Improvements	6"	4	
747	Pine	Remove	General Site Improvements	5"	4	
748	Pine	Remove	General Site Improvements	4"	4	
749	Pine	Remove	General Site Improvements	5"	5	
750	Pine	Remove	General Site Improvements	4"	5	
751	Pine	Remove	General Site Improvements	5"	5	
752	Pine	Remove	General Site Improvements	6"	5	
753	Pine	Remove	General Site Improvements	6"	5	
754	Pine	Remove	General Site Improvements	5"	5	
755	Pine	Remove	General Site Improvements	5"	5	
756	Pine	Remove	General Site Improvements	6"	5	
757	Pine	Remove	General Site Improvements	4"	5	
758	Pine	Remove	General Site Improvements	4"	5	

Tree ID	Tree Type	Remove/Preserve	Reason for Removal	Size (DBH)	Condition	Notes
759	Pine	Remove	General Site Improvements	4"	5	
760	Pine	Remove	General Site Improvements	6"	5	
761	Pine	Remove	General Site Improvements	6"	5	
762	Pine	Remove	General Site Improvements	4"	5	
763	Pine	Remove	General Site Improvements	6"	5	
764	Pine	Remove	General Site Improvements	6"	5	
765	Pine	Remove	General Site Improvements	6"	5	
766	Pine	Remove	General Site Improvements	6"	5	
767	Pine	Remove	General Site Improvements	5"	5	
768	Oak	Remove	General Site Improvements	4"	5	
769	Pine	Remove	General Site Improvements	8"	5	
770	Pine	Remove	General Site Improvements	6"	5	
771	Pine	Remove	General Site Improvements	6"	5	
772	Pine	Remove	General Site Improvements	6"	5	
773	Pine	Remove	General Site Improvements	5"	5	
774	Pine	Remove	General Site Improvements	5"	5	
775	Pine	Remove	General Site Improvements	4"	5	
776	Pine	Remove	General Site Improvements	4"	5	
777	Pine	Remove	General Site Improvements	5"	5	
778	Pine	Remove	General Site Improvements	5"	5	
779	Pine	Remove	General Site Improvements	4"	5	
780	Pine	Remove	General Site Improvements	5"	5	
781	Pine	Remove	General Site Improvements	5"	5	
782	Pine	Remove	General Site Improvements	5"	5	
783	Pine	Remove	General Site Improvements	4"	3	
784	Pine	Remove	General Site Improvements	6"	5	
785	Pine	Remove	General Site Improvements	4"	5	
786	Pine	Remove	General Site Improvements	5"	5	
787	Pine	Remove	General Site Improvements	4"	3	
788	Pine	Remove	General Site Improvements	4"	5	
789	Pine	Remove	General Site Improvements	6"	5	
790	Pine	Remove	General Site Improvements	6"	5	
791	Pine	Remove	General Site Improvements	4"	5	
792	Pine	Remove	General Site Improvements	4"	5	
793	Pine	Remove	General Site Improvements	6"	5	
794	Pine	Remove	General Site Improvements	4"	5	
795	Pine	Remove	General Site Improvements	7"	5	
796	Pine	Remove	General Site Improvements	5"	5	
797	Pine	Remove	General Site Improvements	4"	3	
798	Pine	Remove	General Site Improvements	6"	5	
799	Pine	Remove	General Site Improvements	6"	5	
800	Pine	Remove	General Site Improvements	5"	5	
801	Pine	Remove	General Site Improvements	6"	5	
802	Pine	Remove	General Site Improvements	4"	5	
803	Pine	Remove	General Site Improvements	5"	5	
804	Pine	Remove	General Site Improvements	5"	5	
805	Pine	Remove	General Site Improvements	7"	4	
806	Pine	Remove	General Site Improvements	5"	5	
807	Pine	Remove	General Site Improvements	4"	3	
808	Pine	Remove	General Site Improvements	5"	5	
809	Pine	Remove	General Site Improvements	4"	5	
810	Pine	Remove	General Site Improvements	6"	5	
811	Pine	Remove	General Site Improvements	5"	5	
812	Pine	Remove	General Site Improvements	5"	5	
813	Pine	Remove	General Site Improvements	5"	5	
814	Pine	Remove	General Site Improvements	5"	5	
815	Pine	Remove	General Site Improvements	6"	5	
816	Pine	Remove	General Site Improvements	5"	5	
817	Pine	Remove	General Site Improvements	5"	5	
818	Pine	Remove	General Site Improvements	4"	5	
819	Pine	Remove	General Site Improvements	6"	5	
820	Pine	Remove	General Site Improvements	5"	5	
821	Pine	Remove	General Site Improvements	5"	5	
822	Pine	Remove	General Site Improvements	5"	3	
823	Pine	Remove	General Site Improvements	6"	5	
824	Pine	Remove	General Site Improvements	5"	5	
825	Pine	Remove	General Site Improvements	6"	5	
826	Pine	Remove	General Site Improvements	4"	5	
827	Pine	Remove	General Site Improvements	8"	5	
828	Pine	Remove	General Site Improvements	4"	5	

Tree ID	Tree Type	Remove/Preserve	Reason for Removal	Size (DBH)	Condition	Notes
829	Pine	Remove	General Site Improvements	8"	5	
830	Pine	Remove	General Site Improvements	5"	5	
831	Pine	Remove	General Site Improvements	5"	5	
832	Pine	Remove	General Site Improvements	4"	5	
833	Pine	Remove	General Site Improvements	4"	5	
834	Pine	Remove	General Site Improvements	6"	5	
835	Pine	Remove	General Site Improvements	5"	5	
836	Pine	Remove	General Site Improvements	6"	5	
837	Pine	Remove	General Site Improvements	5"	5	
838	Pine	Remove	General Site Improvements	6"	5	
839	Pine	Remove	General Site Improvements	6"	5	
840	Pine	Remove	General Site Improvements	6"	5	
841	Pine	Remove	General Site Improvements	4"	5	
842	Pine	Remove	General Site Improvements	5"	5	
843	Pine	Remove	General Site Improvements	6"	5	
844	Pine	Remove	General Site Improvements	5"	5	
845	Pine	Remove	General Site Improvements	4"	5	
846	Pine	Remove	General Site Improvements	4"	5	
847	Pine	Remove	General Site Improvements	5"	5	
848	Pine	Remove	General Site Improvements	4"	3	
849	Pine	Remove	General Site Improvements	5"	5	
850	Pine	Remove	General Site Improvements	7"	5	
851	Pine	Remove	General Site Improvements	4"	5	
852	Pine	Remove	General Site Improvements	5"	5	
853	Pine	Remove	General Site Improvements	6"	5	
854	Pine	Remove	General Site Improvements	5"	5	
855	Pine	Remove	General Site Improvements	5"	5	
856	Pine	Remove	General Site Improvements	4"	5	
857	Pine	Remove	General Site Improvements	4"	5	
858	Pine	Remove	General Site Improvements	4"	5	
859	Pine	Remove	General Site Improvements	4"	5	
860	Pine	Remove	General Site Improvements	5"	5	
861	Pine	Remove	General Site Improvements	4"	5	
862	Pine	Remove	General Site Improvements	5"	5	
863	Pine	Remove	General Site Improvements	5"	5	
864	Pine	Remove	General Site Improvements	5"	5	
865	Pine	Remove	General Site Improvements	4"	4	
866	Pine	Remove	General Site Improvements	4"	5	
867	Pine	Remove	General Site Improvements	5"	5	
868	Pine	Remove	General Site Improvements	4"	5	
869	Pine	Remove	General Site Improvements	5"	5	
870	Pine	Remove	General Site Improvements	5"	5	
871	Pine	Remove	General Site Improvements	5"	5	
872	Pine	Remove	General Site Improvements	4"	5	
873	Pine	Remove	General Site Improvements	4"	5	
874	Pine	Remove	General Site Improvements	4"	5	
875	Pine	Remove	General Site Improvements	4"	5	
876	Pine	Remove	General Site Improvements	4"	5	
877	Pine	Remove	General Site Improvements	5"	5	
878	Pine	Remove	General Site Improvements	5"	5	
879	Pine	Remove	General Site Improvements	5"	5	
880	Pine	Remove	General Site Improvements	5"	5	
881	Pine	Remove	General Site Improvements	4"	5	
882	Pine	Remove	General Site Improvements	5"	5	
883	Oak	Remove	General Site Improvements	4"	5	
884	Juniper	Remove	General Site Improvements	4"	5	
885	Pine	Remove	General Site Improvements	5"	5	
886	Pine	Remove	General Site Improvements	5"	3	
887	Pine	Remove	General Site Improvements	5"	3	
888	Pine	Remove	General Site Improvements	5"	5	
889	Pine	Remove	General Site Improvements	8"	5	
890	Pine	Remove	General Site Improvements	6"	5	
891	Pine	Remove	General Site Improvements	4"	5	
892	Pine	Remove	General Site Improvements	4"	5	
893	Pine	Remove	General Site Improvements	4"	3	
894	Pine	Remove	General Site Improvements	5"	5	
895	Pine	Remove	General Site Improvements	4"	5	
896	Pine	Remove	General Site Improvements	4"	5	
897	Pine	Remove	General Site Improvements	4"	5	
898	Pine	Remove	General Site Improvements	6"	5	

Tree ID	Tree Type	Remove/Preserve	Reason for Removal	Size (DBH)	Condition	Notes
899	Pine	Remove	General Site Improvements	4"	5	
900	Pine	Remove	General Site Improvements	4"	5	
901	Pine	Remove	General Site Improvements	5"	5	
902	Pine	Remove	General Site Improvements	4"	5	
903	Pine	Remove	General Site Improvements	5"	5	
904	Pine	Remove	General Site Improvements	5"	5	
905	Pine	Remove	General Site Improvements	5"	5	
906	Pine	Remove	General Site Improvements	4"	5	
907	Pine	Remove	General Site Improvements	6"	5	
908	Pine	Remove	General Site Improvements	6"	5	
909	Pine	Remove	General Site Improvements	6"	5	
910	Pine	Remove	General Site Improvements	6"	5	
911	Pine	Remove	General Site Improvements	5"	5	
912	Pine	Remove	General Site Improvements	6"	5	
913	Pine	Remove	General Site Improvements	8"	5	
914	Pine	Remove	General Site Improvements	5"	5	
915	Pine	Remove	General Site Improvements	7"	5	
916	Pine	Remove	General Site Improvements	5"	5	
917	Spruce	Remove	General Site Improvements	4"	5	
918	Cottonwood	Remove	General Site Improvements	11"	5	
919	Cottonwood	Remove	General Site Improvements	9"	5	
920	Cottonwood	Remove	General Site Improvements	10"	5	Multi-Trunk: 10", 8", 6", 6" & 6"
921	Cottonwood	Remove	General Site Improvements	9"	4	
922	Cottonwood	Remove	General Site Improvements	10"	4	Multi-Trunk: 10", 8", 6" & 4"
923	Cottonwood	Remove	General Site Improvements	9"	3	Multi-Trunk: 9", 8" & 5"
924	Cottonwood	Remove	General Site Improvements	10"	3	Multi-Trunk: 10" & 10"
925	Cottonwood	Remove	General Site Improvements	10"	5	Multi-Trunk: 10" & 6"
926	Cottonwood	Remove	General Site Improvements	12"	5	
927	Spruce	Remove	General Site Improvements	16"	5	
928	Pine	Remove	General Site Improvements	8"	5	
929	Spruce	Remove	General Site Improvements	14"	5	
930	Spruce	Remove	General Site Improvements	10"	5	
931	Spruce	Remove	General Site Improvements	10"	5	
932	Spruce	Remove	General Site Improvements	7"	5	
933	Spruce	Remove	General Site Improvements	9"	5	
934	Spruce	Remove	General Site Improvements	9"	5	
935	Spruce	Remove	General Site Improvements	9"	5	Multi-Trunk: 9" & 9"
936	Spruce	Remove	General Site Improvements	8"	5	
937	Juniper	Remove	General Site Improvements	5"	5	
938	Spruce	Remove	General Site Improvements	17"	5	Multi-Trunk: 17" & 14"
939	Juniper	Remove	General Site Improvements	5"	5	Multi-Trunk: 5" & 5"
940	Spruce	Remove	General Site Improvements	8"	5	
941	Spruce	Remove	General Site Improvements	8"	5	
942	Spruce	Remove	General Site Improvements	12"	5	
943	Spruce	Remove	General Site Improvements	6"	3	
944	Spruce	Remove	General Site Improvements	12"	5	
945	Spruce	Remove	General Site Improvements	12"	5	Multi-Trunk: 12" & 8"
946	Spruce	Remove	General Site Improvements	12"	4	Multi-Trunk: 12" & 10"
947	Spruce	Remove	General Site Improvements	6"	2	Multi-Trunk: 6" & 5"
948	Spruce	Remove	General Site Improvements	10"	5	Multi-Trunk: 10" & 8"
949	Pine	Remove	General Site Improvements	7"	5	
950	Spruce	Remove	General Site Improvements	8"	5	Multi-Trunk: 8", 7", 6" & 4"
951	Spruce	Remove	General Site Improvements	16"	5	Multi-Trunk: 16" & 9"
952	Spruce	Remove	General Site Improvements	13"	5	
953	Spruce	Remove	General Site Improvements	12"	5	
954	Spruce	Remove	General Site Improvements	14"	5	Multi-Trunk: 14" & 12"
955	Spruce	Remove	General Site Improvements	13"	5	Multi-Trunk: 13" & 8"
956	Spruce	Remove	General Site Improvements	16"	5	
957	Spruce	Remove	General Site Improvements	10"	5	
958	Spruce	Remove	General Site Improvements	9"	5	Multi-Trunk: 9" & 7"
959	Spruce	Remove	General Site Improvements	8"	5	
960	Spruce	Remove	General Site Improvements	10"	5	
961	Spruce	Remove	General Site Improvements	6"	5	
962	Pine	Remove	General Site Improvements	10"	5	Multi-Trunk: 10" & 6"
963	Juniper	Remove	General Site Improvements	4"	5	
964	Spruce	Remove	General Site Improvements	8"	5	Multi-Trunk: 8" & 4"
965	Pine	Remove	General Site Improvements	6"	5	
966	Pine	Remove	General Site Improvements	6"	5	
967	Pine	Remove	General Site Improvements	4"	5	
968	Pine	Remove	General Site Improvements	6"	5	

Tree ID	Tree Type	Remove/Preserve	Reason for Removal	Size (DBH)	Condition	Notes
969	Pine	Remove	General Site Improvements	4"	5	
970	Pine	Remove	General Site Improvements	6"	5	
971	Pine	Remove	General Site Improvements	6"	5	
972	Pine	Remove	General Site Improvements	6"	5	
973	Pine	Remove	General Site Improvements	6"	5	
974	Pine	Remove	General Site Improvements	4"	5	
975	Pine	Remove	General Site Improvements	6"	5	
976	Pine	Remove	General Site Improvements	5"	5	
977	Pine	Remove	General Site Improvements	5"	5	
978	Pine	Remove	General Site Improvements	6"	5	
979	Pine	Remove	General Site Improvements	4"	5	
980	Pine	Remove	General Site Improvements	5"	5	
981	Pine	Remove	General Site Improvements	6"	5	
982	Pine	Remove	General Site Improvements	4"	5	
983	Pine	Remove	General Site Improvements	5"	5	
984	Pine	Remove	General Site Improvements	4"	5	
985	Pine	Remove	General Site Improvements	4"	2	
986	Pine	Remove	General Site Improvements	5"	5	
987	Pine	Remove	General Site Improvements	5"	5	
988	Pine	Remove	General Site Improvements	8"	5	
989	Pine	Remove	General Site Improvements	6"	5	
990	Pine	Remove	General Site Improvements	5"	5	
991	Pine	Remove	General Site Improvements	4"	5	
992	Pine	Remove	General Site Improvements	4"	5	
993	Pine	Remove	General Site Improvements	4"	5	
994	Pine	Remove	General Site Improvements	5"	5	
995	Pine	Remove	General Site Improvements	4"	5	
996	Pine	Remove	General Site Improvements	5"	5	
997	Pine	Remove	General Site Improvements	4"	5	
998	Pine	Remove	General Site Improvements	5"	5	
999	Juniper	Remove	General Site Improvements	4"	5	
1000	Juniper	Remove	General Site Improvements	4"	5	
1001	Pine	Remove	General Site Improvements	5"	5	
1002	Juniper	Remove	General Site Improvements	4"	5	
1003	Pine	Remove	General Site Improvements	8"	5	
1004	Pine	Remove	General Site Improvements	7"	5	
1005	Pine	Remove	General Site Improvements	4"	5	
1006	Pine	Remove	General Site Improvements	5"	5	
1007	Pine	Remove	General Site Improvements	8"	5	
1008	Pine	Remove	General Site Improvements	5"	5	
1009	Pine	Remove	General Site Improvements	6"	5	
1010	Pine	Remove	General Site Improvements	5"	5	
1011	Pine	Remove	General Site Improvements	5"	5	
1012	Pine	Remove	General Site Improvements	7"	5	
1013	Pine	Remove	General Site Improvements	7"	5	
1014	Pine	Remove	General Site Improvements	6"	5	
1015	Pine	Remove	General Site Improvements	6"	5	
1016	Pine	Remove	General Site Improvements	5"	5	
1017	Pine	Remove	General Site Improvements	6"	5	
1018	Pine	Remove	General Site Improvements	4"	5	
1019	Pine	Remove	General Site Improvements	6"	5	
1020	Pine	Remove	General Site Improvements	5"	3	
1021	Pine	Remove	General Site Improvements	5"	5	
1022	Pine	Remove	General Site Improvements	6"	5	
1023	Pine	Remove	General Site Improvements	7"	5	
1024	Pine	Remove	General Site Improvements	5"	5	
1025	Pine	Remove	General Site Improvements	5"	5	
1026	Pine	Remove	General Site Improvements	6"	5	
1027	Pine	Remove	General Site Improvements	5"	5	
1028	Pine	Remove	General Site Improvements	4"	5	
1029	Pine	Remove	General Site Improvements	4"	5	
1030	Pine	Remove	General Site Improvements	4"	5	
1031	Pine	Remove	General Site Improvements	4"	5	
1032	Pine	Remove	General Site Improvements	5"	5	
1033	Pine	Remove	General Site Improvements	6"	5	
1034	Pine	Remove	General Site Improvements	5"	5	
1035	Pine	Remove	General Site Improvements	6"	5	
1036	Pine	Remove	General Site Improvements	5"	5	
1037	Pine	Remove	General Site Improvements	5"	5	
1038	Pine	Remove	General Site Improvements	7"	5	

Tree ID	Tree Type	Remove/Preserve	Reason for Removal	Size (DBH)	Condition	Notes
1039	Pine	Remove	General Site Improvements	5"	5	
1040	Pine	Remove	General Site Improvements	6"	5	
1041	Pine	Remove	General Site Improvements	6"	3	
1042	Pine	Remove	General Site Improvements	6"	5	
1043	Pine	Remove	General Site Improvements	4"	5	
1044	Pine	Remove	General Site Improvements	4"	5	
1045	Pine	Remove	General Site Improvements	5"	5	
1046	Pine	Remove	General Site Improvements	5"	5	
1047	Pine	Remove	General Site Improvements	5"	5	
1048	Pine	Remove	General Site Improvements	4"	5	
1049	Pine	Remove	General Site Improvements	6"	5	
1050	Pine	Remove	General Site Improvements	4"	5	
1051	Pine	Remove	General Site Improvements	7"	5	
1052	Pine	Remove	General Site Improvements	4"	5	
1053	Pine	Remove	General Site Improvements	5"	5	
1054	Pine	Remove	General Site Improvements	4"	5	
1055	Pine	Remove	General Site Improvements	5"	5	
1056	Pine	Remove	General Site Improvements	5"	5	
1057	Pine	Remove	General Site Improvements	7"	5	
1058	Pine	Remove	General Site Improvements	4"	5	
1059	Pine	Remove	General Site Improvements	5"	5	
1060	Pine	Remove	General Site Improvements	4"	5	
1061	Pine	Remove	General Site Improvements	6"	5	
1062	Pine	Remove	General Site Improvements	4"	3	
1063	Pine	Remove	General Site Improvements	6"	5	
1064	Pine	Remove	General Site Improvements	4"	5	
1065	Pine	Remove	General Site Improvements	5"	5	
1066	Pine	Remove	General Site Improvements	4"	5	
1067	Pine	Remove	General Site Improvements	6"	5	
1068	Pine	Remove	General Site Improvements	4"	5	
1069	Pine	Remove	General Site Improvements	4"	5	
1070	Pine	Remove	General Site Improvements	4"	5	
1071	Pine	Remove	General Site Improvements	4"	5	
1072	Pine	Remove	General Site Improvements	5"	5	
1073	Pine	Remove	General Site Improvements	4"	5	
1074	Pine	Remove	General Site Improvements	4"	5	
1075	Pine	Remove	General Site Improvements	5"	5	
1076	Pine	Remove	General Site Improvements	6"	5	
1077	Pine	Remove	General Site Improvements	4"	5	
1078	Pine	Remove	General Site Improvements	5"	5	
1079	Pine	Remove	General Site Improvements	6"	5	
1080	Pine	Remove	General Site Improvements	7"	5	
1081	Pine	Remove	General Site Improvements	6"	5	
1082	Pine	Remove	General Site Improvements	6"	5	
1083	Pine	Remove	General Site Improvements	6"	5	
1084	Pine	Remove	General Site Improvements	4"	5	
1085	Pine	Remove	General Site Improvements	4"	5	
1086	Pine	Remove	General Site Improvements	6"	5	
1087	Pine	Remove	General Site Improvements	4"	5	
1088	Pine	Remove	General Site Improvements	6"	5	Multi-Trunk: 6" & 5"
1089	Pine	Remove	General Site Improvements	4"	5	
1090	Pine	Remove	General Site Improvements	5"	5	
1091	Pine	Remove	General Site Improvements	5"	5	
1092	Pine	Remove	General Site Improvements	4"	5	
1093	Pine	Remove	General Site Improvements	7"	5	
1094	Pine	Remove	General Site Improvements	4"	5	
1095	Pine	Remove	General Site Improvements	4"	5	
1096	Pine	Remove	General Site Improvements	5"	5	
1097	Pine	Remove	General Site Improvements	6"	5	
1098	Pine	Remove	General Site Improvements	4"	5	
1099	Pine	Remove	General Site Improvements	7"	5	
1100	Pine	Remove	General Site Improvements	6"	5	
1101	Pine	Remove	General Site Improvements	6"	5	
1102	Pine	Remove	General Site Improvements	6"	5	
1103	Pine	Remove	General Site Improvements	5"	5	
1104	Pine	Remove	General Site Improvements	7"	5	
1105	Pine	Remove	General Site Improvements	6"	5	
1106	Pine	Remove	General Site Improvements	5"	5	
1107	Pine	Remove	General Site Improvements	6"	5	
1108	Pine	Remove	General Site Improvements	6"	5	

Tree ID	Tree Type	Remove/Preserve	Reason for Removal	Size (DBH)	Condition	Notes
1109	Pine	Remove	General Site Improvements	6"	5	
1110	Pine	Remove	General Site Improvements	6"	5	
1111	Pine	Remove	General Site Improvements	6"	5	
1112	Pine	Remove	General Site Improvements	6"	5	
1113	Pine	Remove	General Site Improvements	5"	5	
1114	Pine	Remove	General Site Improvements	5"	5	
1115	Pine	Remove	General Site Improvements	6"	5	
1116	Pine	Remove	General Site Improvements	6"	5	
1117	Pine	Remove	General Site Improvements	6"	5	
1118	Pine	Remove	General Site Improvements	4"	5	
1119	Pine	Remove	General Site Improvements	5"	5	
1120	Pine	Remove	General Site Improvements	5"	5	
1121	Pine	Remove	General Site Improvements	6"	5	
1122	Pine	Remove	General Site Improvements	4"	5	
1123	Pine	Remove	General Site Improvements	4"	5	
1124	Pine	Remove	General Site Improvements	6"	5	
1125	Pine	Remove	General Site Improvements	6"	5	
1126	Pine	Remove	General Site Improvements	6"	5	
1127	Pine	Remove	General Site Improvements	6"	5	
1128	Pine	Remove	General Site Improvements	4"	3	
1129	Pine	Remove	General Site Improvements	4"	5	
1130	Pine	Remove	General Site Improvements	4"	5	
1131	Pine	Remove	General Site Improvements	6"	5	
1132	Pine	Remove	General Site Improvements	7"	5	
1133	Pine	Remove	General Site Improvements	4"	5	
1134	Pine	Remove	General Site Improvements	4"	5	
1135	Pine	Remove	General Site Improvements	6"	5	
1136	Pine	Remove	General Site Improvements	4"	5	
1137	Pine	Remove	General Site Improvements	6"	5	
1138	Pine	Remove	General Site Improvements	6"	4	
1139	Pine	Remove	General Site Improvements	6"	5	
1140	Pine	Remove	General Site Improvements	4"	5	
1141	Pine	Remove	General Site Improvements	5"	5	
1142	Pine	Remove	General Site Improvements	4"	5	
1143	Pine	Remove	General Site Improvements	5"	5	
1144	Pine	Remove	General Site Improvements	4"	5	
1145	Pine	Remove	General Site Improvements	4"	5	

On-Site Tree Summary

Sub-Total Significant Trees (DBH) (Inches) for Removal	6,741"
30% Multiplier	0.3
Total Significant Trees DBH	2,022"
125% Replacement Multiplier	1.25

Total Tree DBH Replacement Required	2,528"
--	---------------