

TREE CALCULATION

BUILDING FOOTPRINT = 90,400 SQ.FT. ±

SITE PERIMETER = 5,355 LINEAR FEET OF PROPERTY LINE

1. DECIDUOUS/ CONIFEROUS TREE REQUIREMENT:

1.1. SITE PERIMETER = 5,355 LINEAR FEET OF PROPERTY LINE / 50 LF = 108 DECIDUOUS/ CONIFEROUS TREES REQ'D

2. SHRUB REQUIREMENT:

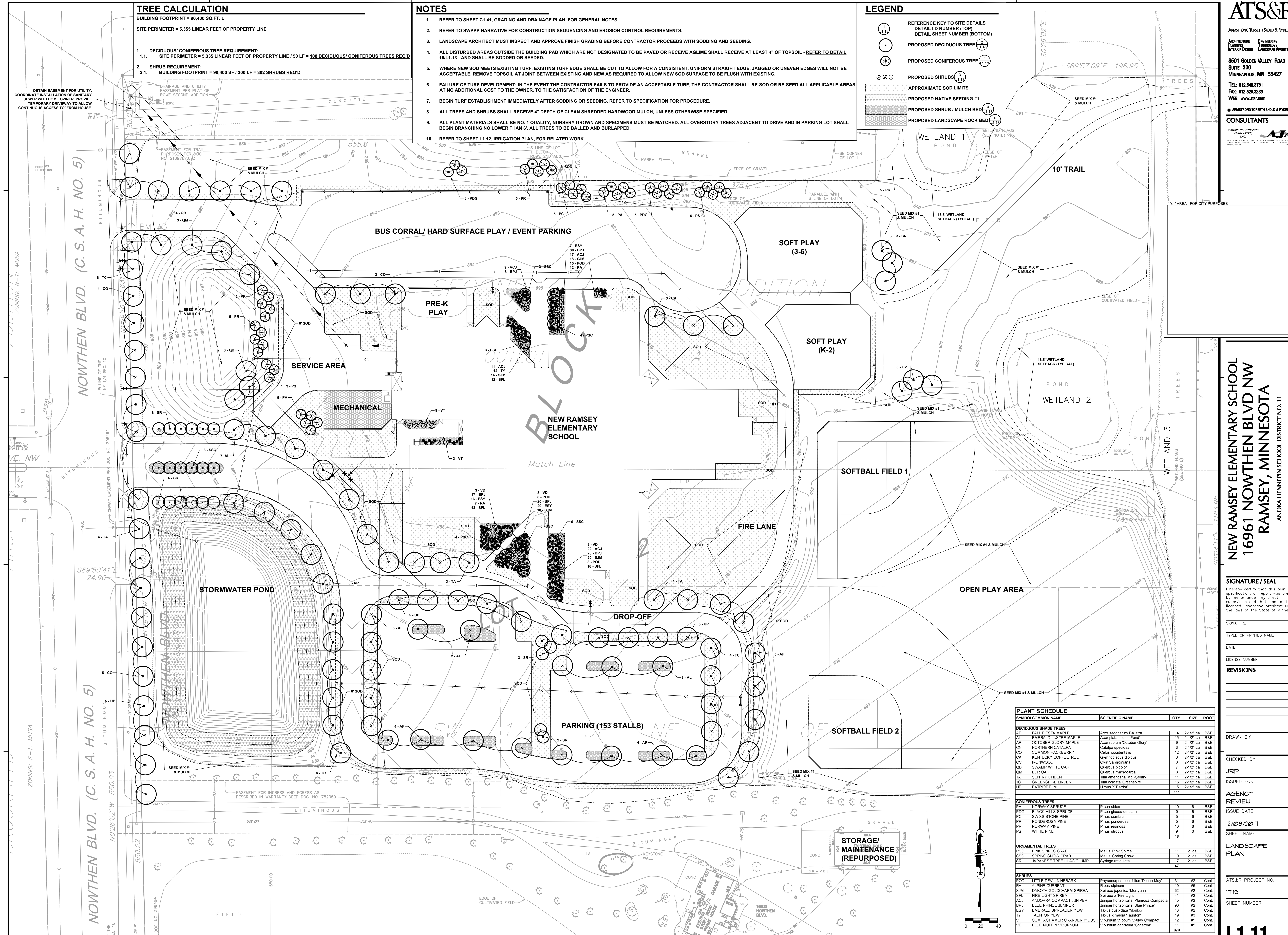
2.1. BUILDING FOOTPRINT = 90,400 SF / 300 LF = 302 SHRUBS REQ'D

NOTES

1. REFER TO SHEET C1.41, GRADING AND DRAINAGE PLAN, FOR GENERAL NOTES.
2. REFER TO SWPPP NARRATIVE FOR CONSTRUCTION SEQUENCING AND EROSION CONTROL REQUIREMENTS.
3. LANDSCAPE ARCHITECT MUST INSPECT AND APPROVE FINISH GRADING BEFORE CONTRACTOR PROCEEDS WITH SODDING AND SEEDING.
4. ALL DISTURBED AREAS OUTSIDE THE BUILDING PAD WHICH ARE NOT DESIGNATED TO BE PAVED OR RECEIVE AGLIME SHALL RECEIVE AT LEAST 4" OF TOPSOIL - REFER TO DETAIL 16L1.13 - AND SHALL BE SODDED OR SEEDDED.
5. WHERE NEW SOD MEETS EXISTING TURF, EXISTING TURF EDGE SHALL BE CUT TO ALLOW FOR A CONSISTENT, UNIFORM STRAIGHT EDGE. JAGGED OR UNEVEN EDGES WILL NOT BE ACCEPTABLE. REMOVE TOPSOIL AT JOINT BETWEEN EXISTING AND NEW AS REQUIRED TO ALLOW NEW SOD SURFACE TO BE FLUSH WITH EXISTING.
6. FAILURE OF TURF DEVELOPMENT: IN THE EVENT THE CONTRACTOR FAILS TO PROVIDE AN ACCEPTABLE TURF, THE CONTRACTOR SHALL RE-SOD OR RE-SEED ALL APPLICABLE AREAS, AT NO ADDITIONAL COST TO THE OWNER, TO THE SATISFACTION OF THE ENGINEER.
7. BEGIN TURF ESTABLISHMENT IMMEDIATELY AFTER SODDING OR SEEDING, REFER TO SPECIFICATION FOR PROCEDURE.
8. ALL TREES AND SHRUBS SHALL RECEIVE 4" DEPTH OF CLEAN SHREDDED HARDWOOD MULCH, UNLESS OTHERWISE SPECIFIED.
9. ALL PLANT MATERIALS SHALL BE NO. 1 QUALITY, NURSERY GROWN AND SPECIMENS MUST BE MATCHED. ALL OVERSTORY TREES ADJACENT TO DRIVE AND IN PARKING LOT SHALL BEGIN BRANCHING NO LOWER THAN 6'. ALL TREES TO BE BALLED AND BURLAPPED.
10. REFER TO SHEET L1.12, IRRIGATION PLAN, FOR RELATED WORK.

LEGEND

- 1. REFERENCE KEY TO SITE DETAILS
DETAIL ID NUMBER (TOP)
DETAIL SHEET NUMBER (BOTTOM)
- 2. PROPOSED DECIDUOUS TREE
- 3. PROPOSED CONIFEROUS TREE
- 4. PROPOSED SHRUBS
- 5. APPROXIMATE SOD LIMITS
- 6. PROPOSED NATIVE SEEDING #1
- 7. PROPOSED SHRUB / MULCH BED
- 8. PROPOSED LANDSCAPE ROCK BED



ATS&R
ARMSTRONG TORSETH SHOLD & RYDEN, INC.
ARCHITECTURE PLANNING INTERIOR DESIGN
ENGINEERING LANDSCAPE ARCHITECTURE
8501 GOLDEN VALLEY ROAD
SUITE 300
MINNEAPOLIS, MN 55427
TEL: 612.545.3731
FAX: 612.525.3289
WEB: www.atsr.com

CONSULTANTS
ANDERSON-JENSEN ASSOCIATES, INC.
AIA
LANDSCAPE ARCHITECTURE

NEW RAMSEY ELEMENTARY SCHOOL
16961 NOWTHEN BLVD NW
RAMSEY, MINNESOTA
ANOKA HENNEPIN SCHOOL DISTRICT NO. 11

SIGNATURE / SEAL

I hereby certify that this plan, specification, or report was prepared by me or under my direct supervision and that I am a duly licensed Landscape Architect under the laws of the State of Minnesota.

SIGNATURE: _____
TYPED OR PRINTED NAME: _____
DATE: _____
LICENSE NUMBER: _____

REVISIONS

NO. DESCRIPTION

DRAWN BY: _____

CHECKED BY: _____

ISSUED FOR: _____

AGENCY REVIEW: _____

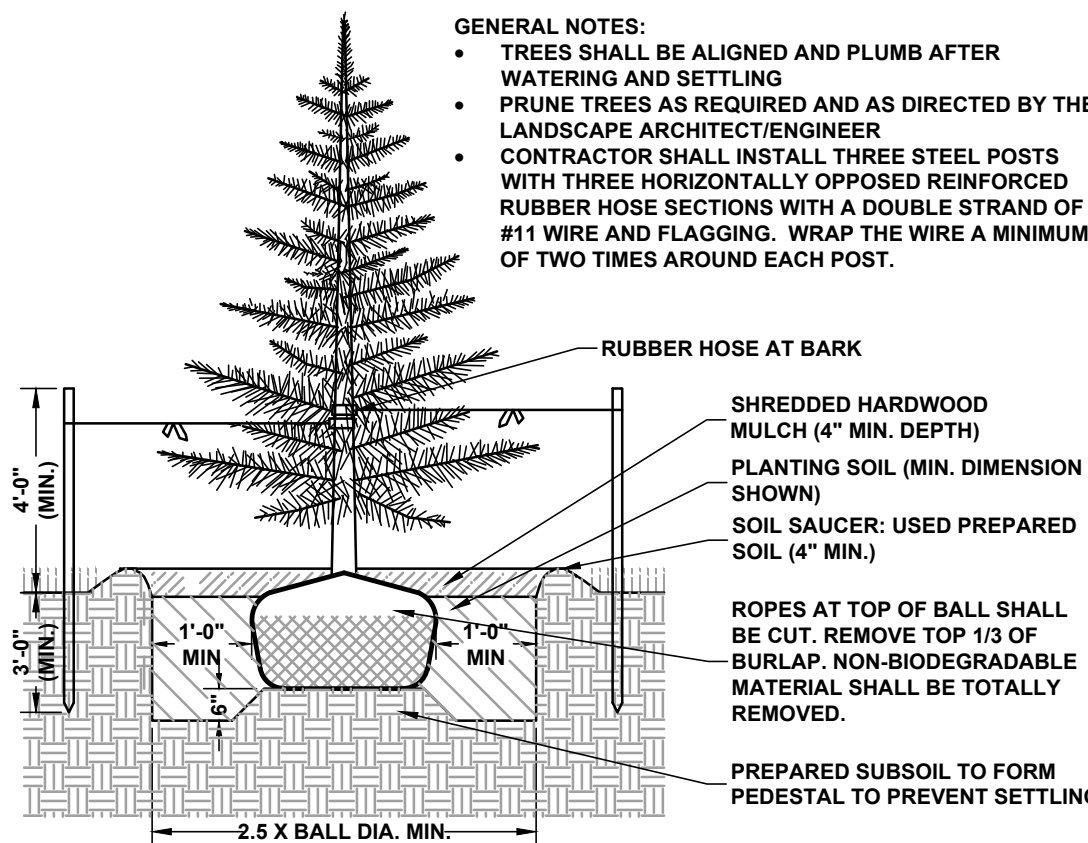
ISSUE DATE: 12/08/2017

SHEET NAME: LANDSCAPE PLAN

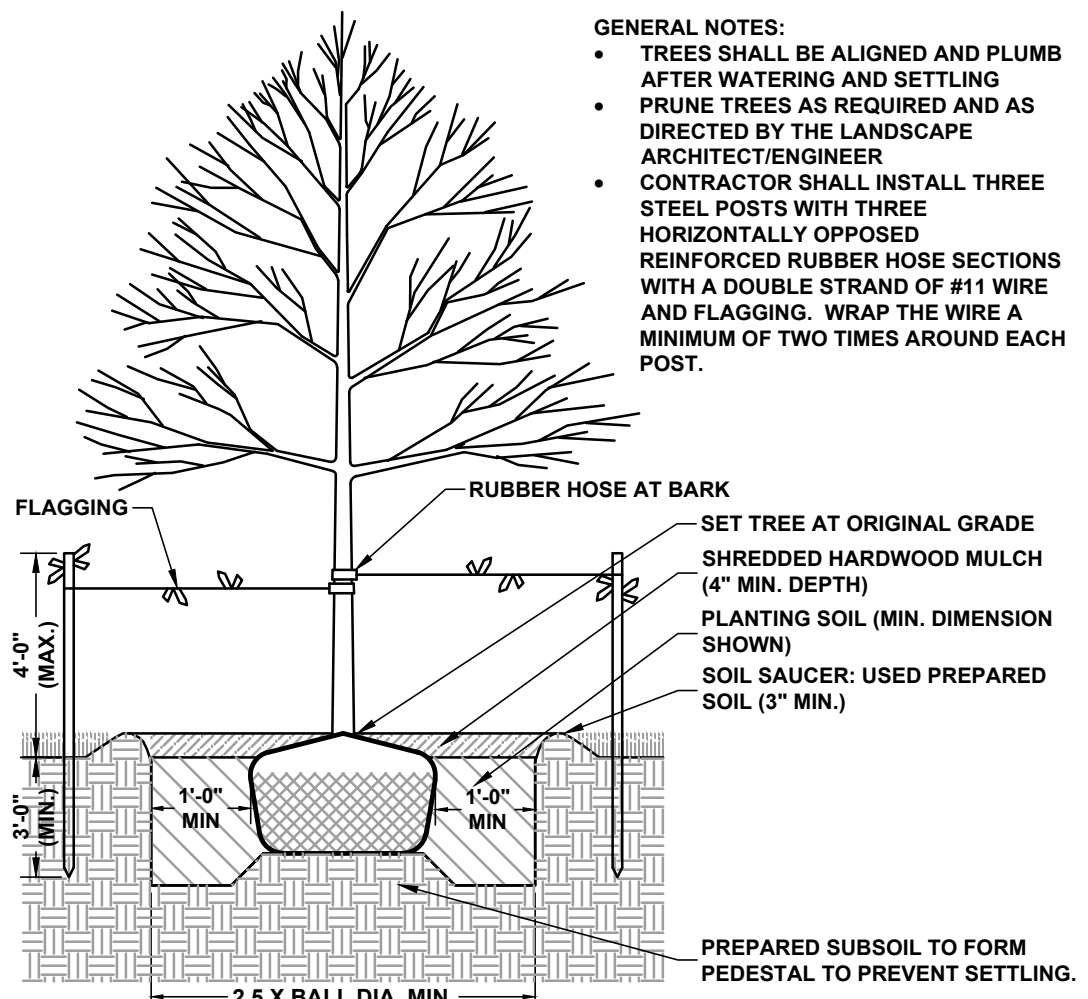
ATS&R PROJECT NO. 17119

SHEET NUMBER

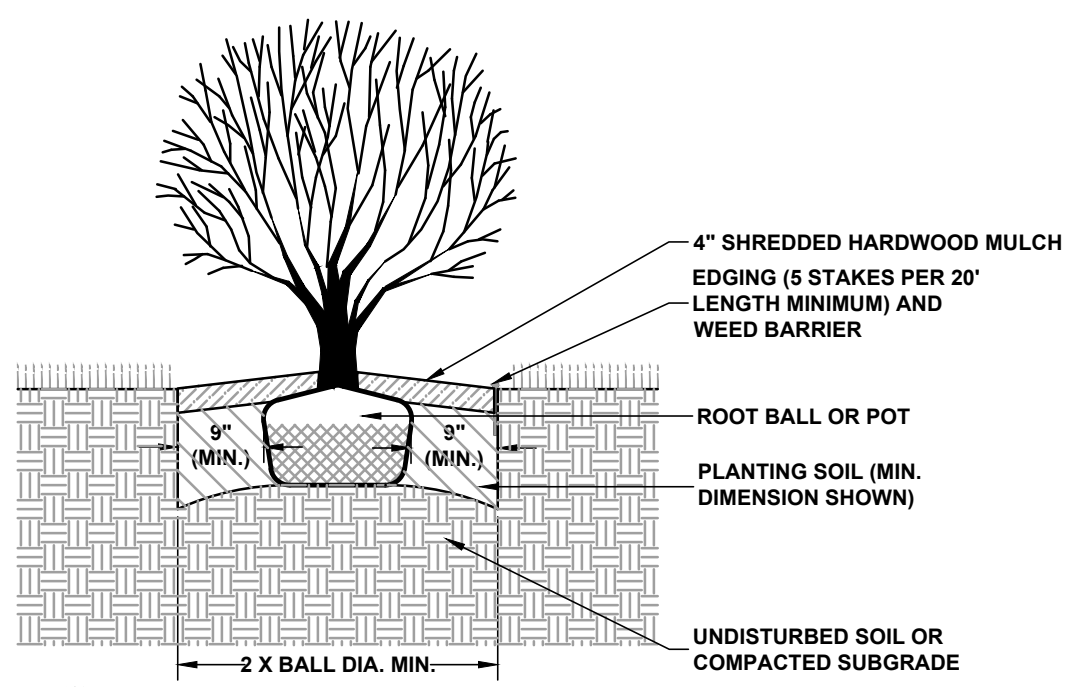
SYMBOL	COMMON NAME	SCIENTIFIC NAME	QTY.	SIZE	ROOT
DECIDUOUS SHADE TREES					
AF	FALL FESTIV MAPLE	Acer saccharum 'Ballista'	14	2-1/2" cal	B&B
AL	EMERALD LUSTRE MAPLE	Acer platanoides 'Pond'	15	2-1/2" cal	B&B
AR	OCTOBER GLORY MAPLE	Acer rubrum 'October Glory'	9	2-1/2" cal	B&B
CN	NORTHERN CALYPA	Catalpa speciosa	3	2-1/2" cal	B&B
CO	COMMON HACKBERRY	Celtis occidentalis	12	2-1/2" cal	B&B
CK	KENTUCKY COFFEE TREE	Gymnocladus dioica	3	2-1/2" cal	B&B
OV	IRONWOOD	Ostrya virginiana	3	2-1/2" cal	B&B
QB	SWAMP WHITE OAK	Quercus bicolor	7	2-1/2" cal	B&B
GM	BUR OAK	Quercus macrocarpa	3	2-1/2" cal	B&B
TA	SENTRY LINDEN	Tilia americana 'McSentry'	11	2-1/2" cal	B&B
TC	GREENSPIRE LINDEN	Tilia cordata 'Greenspire'	16	2-1/2" cal	B&B
UP	PATRIOT ELM	Ulmus X 'Patriot'	15	2-1/2" cal	B&B
			111		
CONIFEROUS TREES					
PA	NORWAY SPRUCE	Picea abies	10	6'	B&B
PD	BLACK HILLS SPRUCE	Picea glauca densata	9	6'	B&B
PC	SWISS STONE PINE	Pinus cembra	5	6'	B&B
PR	PORONORSA PINE	Pinus ponderosa	5	6'	B&B
PN	NORWAY PINE	Pinus resinosa	10	6'	B&B
PP	WHITE PINE	Pinus strobus	9	6'	B&B
			48		
ORNAMENTAL TREES					
PSC	PINK SPIRES CRAB	Malus 'Pink Spire'	11	2" cal	B&B
SSC	SPRING SNOW CRAB	Malus 'Spring Snow'	19	2" cal	B&B
SR	JAPANESE TREE LILAC CLUMP	Syringa reticulata	17	2" cal	B&B
			47		
SHRUBS					
PDG	LITTLE DEVIL NINEBARK	Physocarpus opulifolius 'Doma May'	31	#2	Cont.
RA	ALPINE CURRENT	Ribes alpinum	19	#5	Cont.
SJM	DAKOTA GOLDCHARM SPIREA	Spiraea japonica 'Wartmann'	62	#2	Cont.
SFL	FIRE LIGHT SPIREA	Spiraea x 'Fire Light'	41	#2	Cont.
ACJ	ANDORRA COMPACT JUNIPER	Juniperus horizontalis 'Plumosa Compacta'	45	#2	Cont.
BPJ	BLUE PRINCE JUNIPER	Juniperus horizontalis 'Blue Prince'	90	#2	Cont.
ESV	EMERALD SPREADER YEW	Taxus canadensis 'Emerald Spreader'	43	#2	Cont.
TY	TAUNTON YEW	Taxus x media 'Taunton'	19	#3	Cont.
VT	COMPACT AMER CRANBERRYBUSH	Viburnum trilobum 'Baley Compact'	12	#5	Cont.
VD	BLUE MUFFIN VIBURNUM	Viburnum dentatum 'Christom'	11	#5	Cont.
			373		



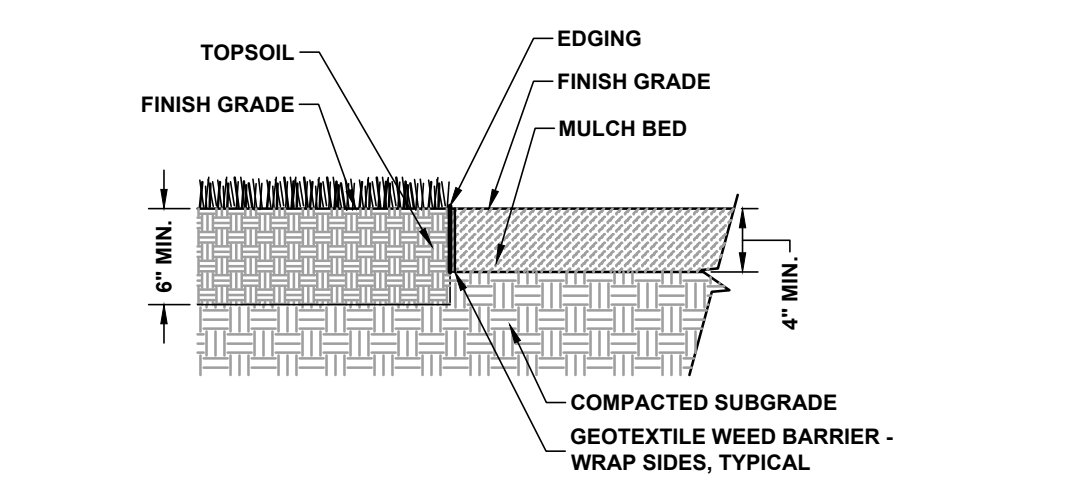
1 CONIFEROUS TREE
L.1.13



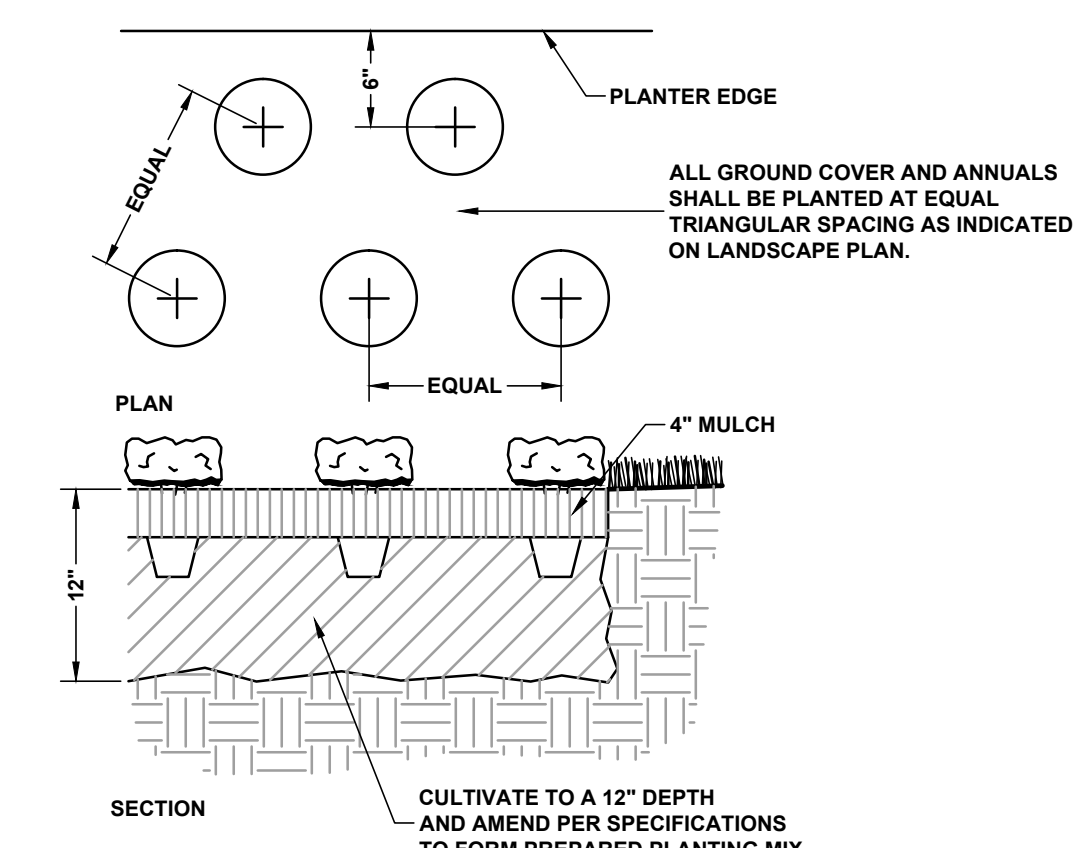
2 DECIDUOUS TREE
L.1.13



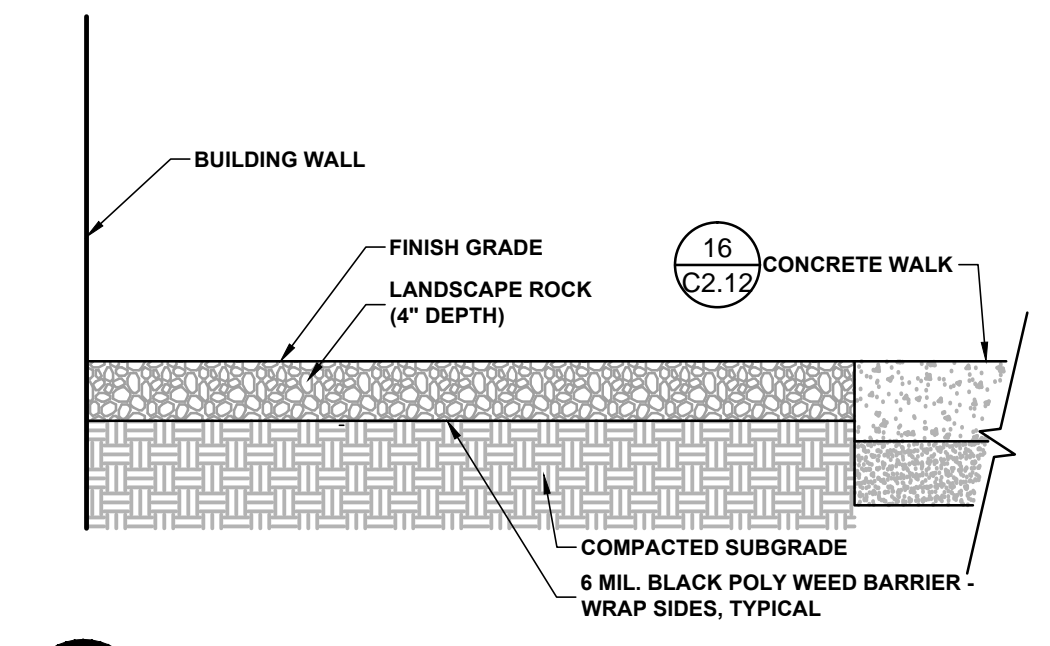
3 SHRUB
L.1.13



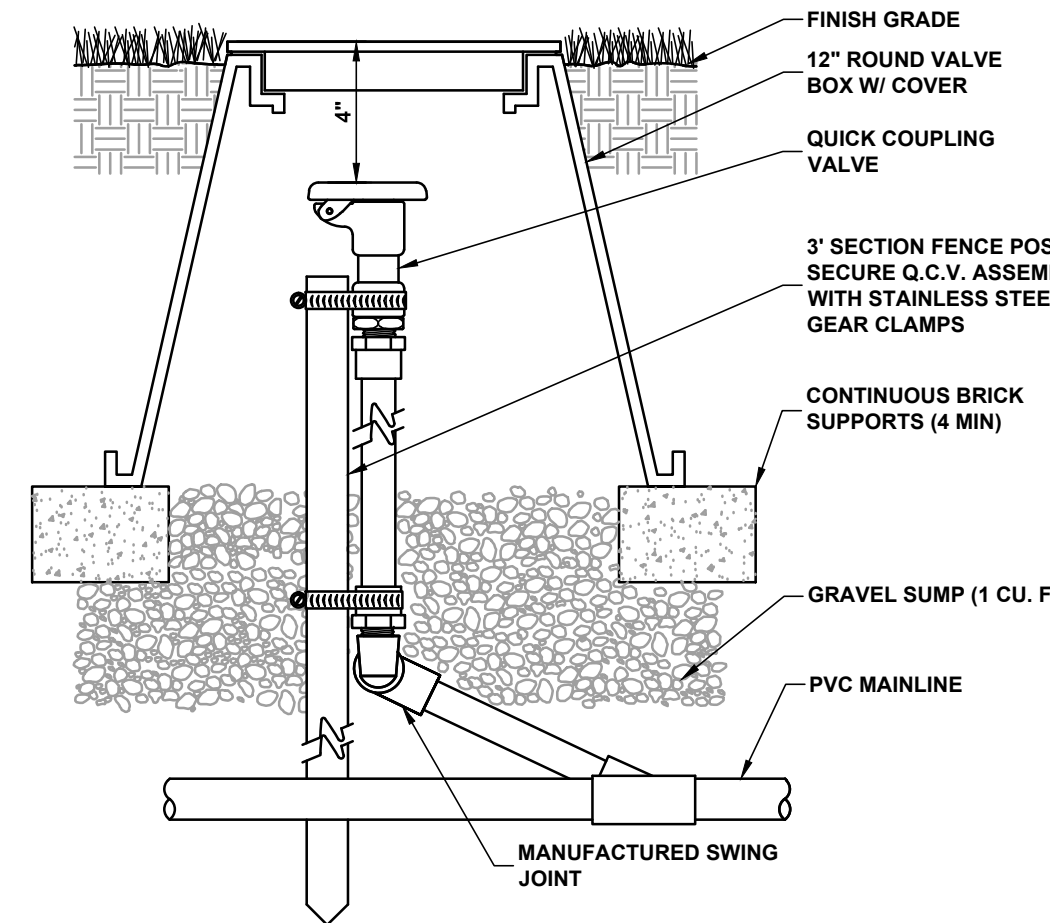
4 SHRUB BED EDGING
L.1.13



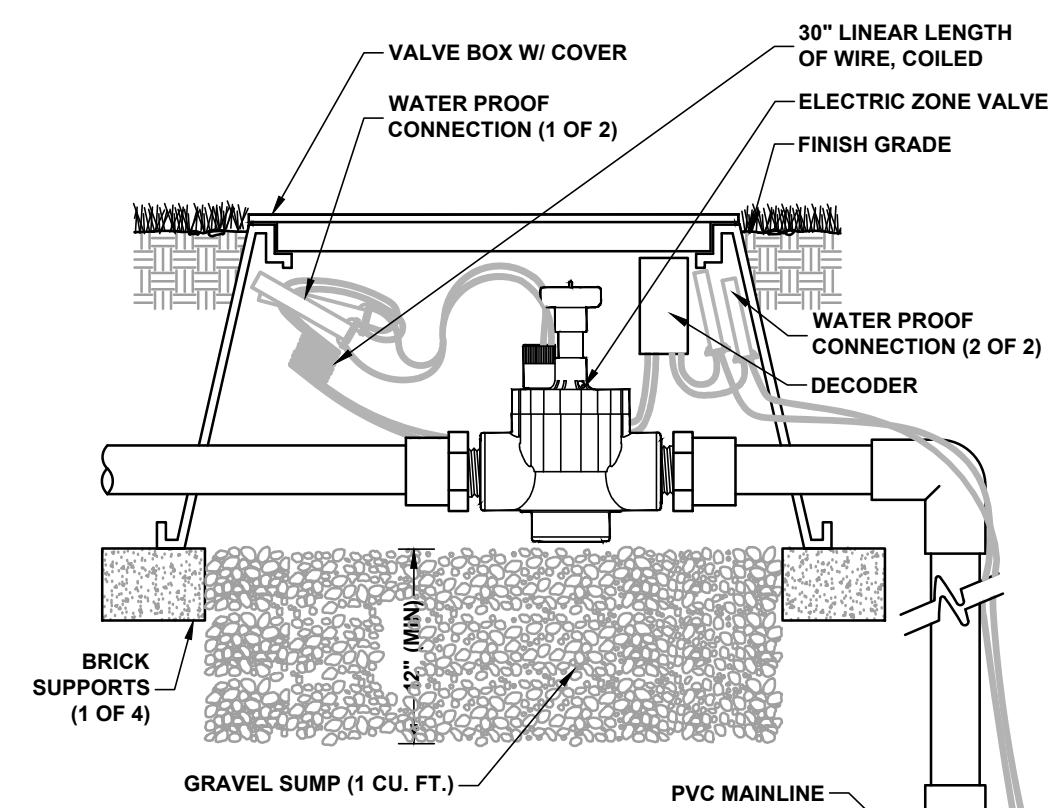
5 GROUND COVER AND PERENNIALS
L.1.13



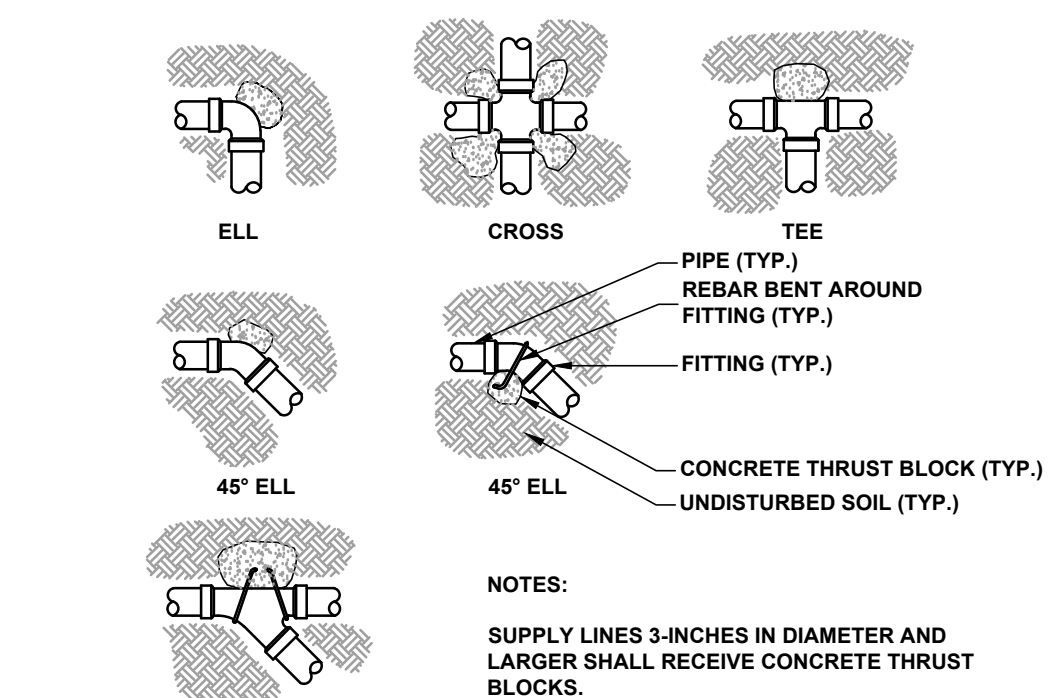
6 LANDSCAPE ROCK BED
L.1.13



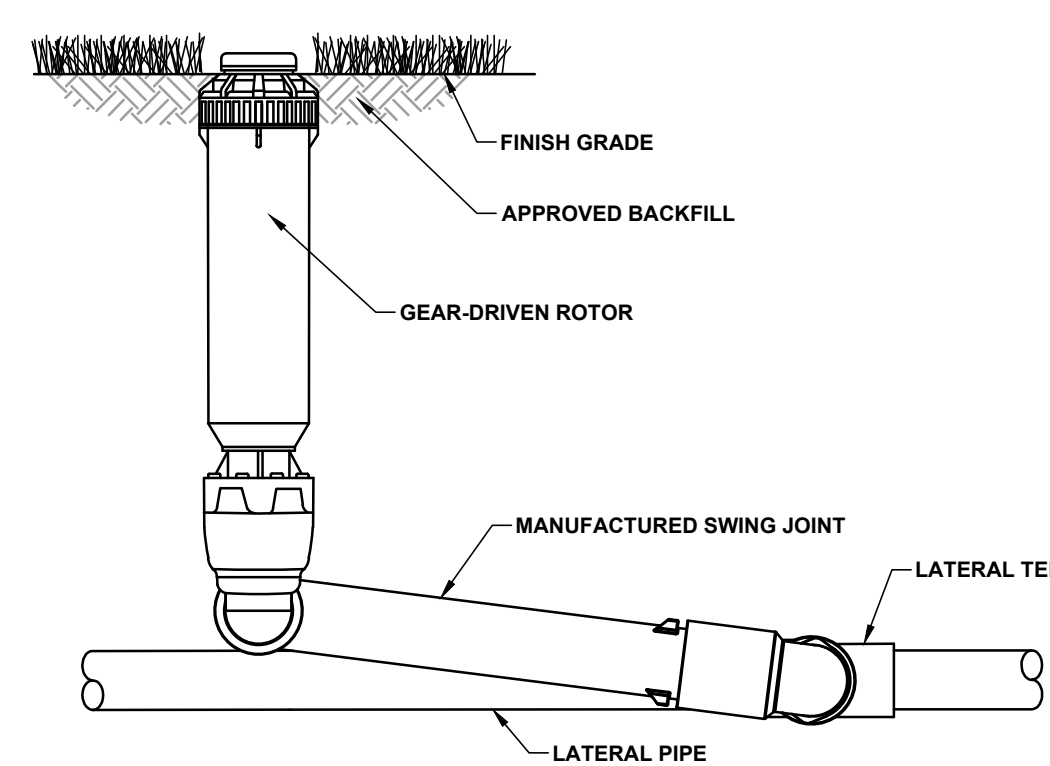
7 QUICK COUPLER
L.1.13



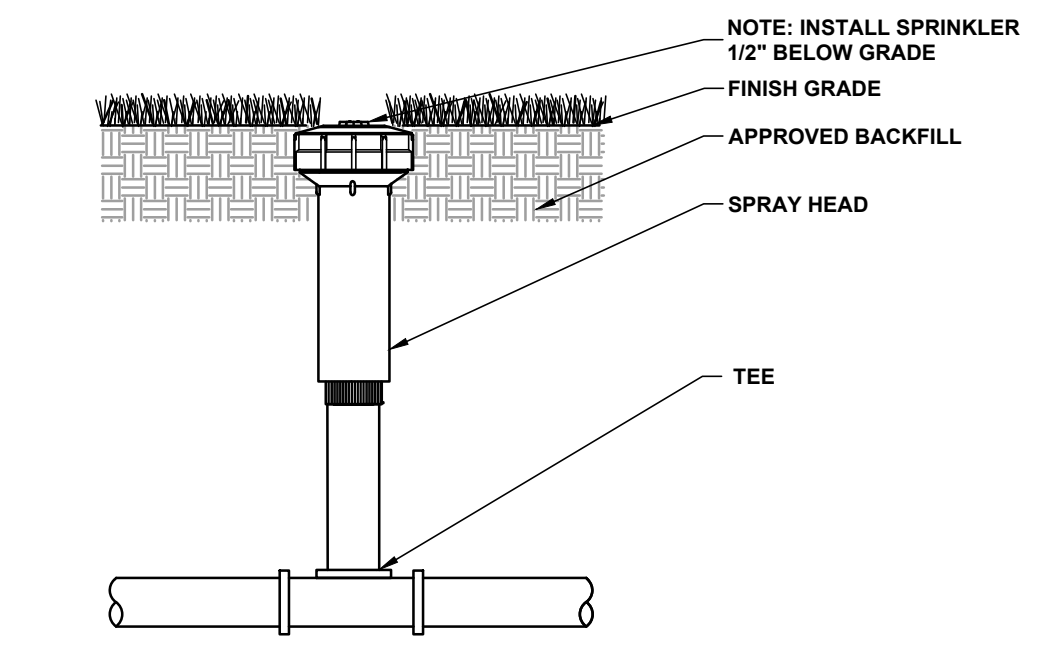
8 DECODER / VALVE BOX AND SUMP
L.1.13



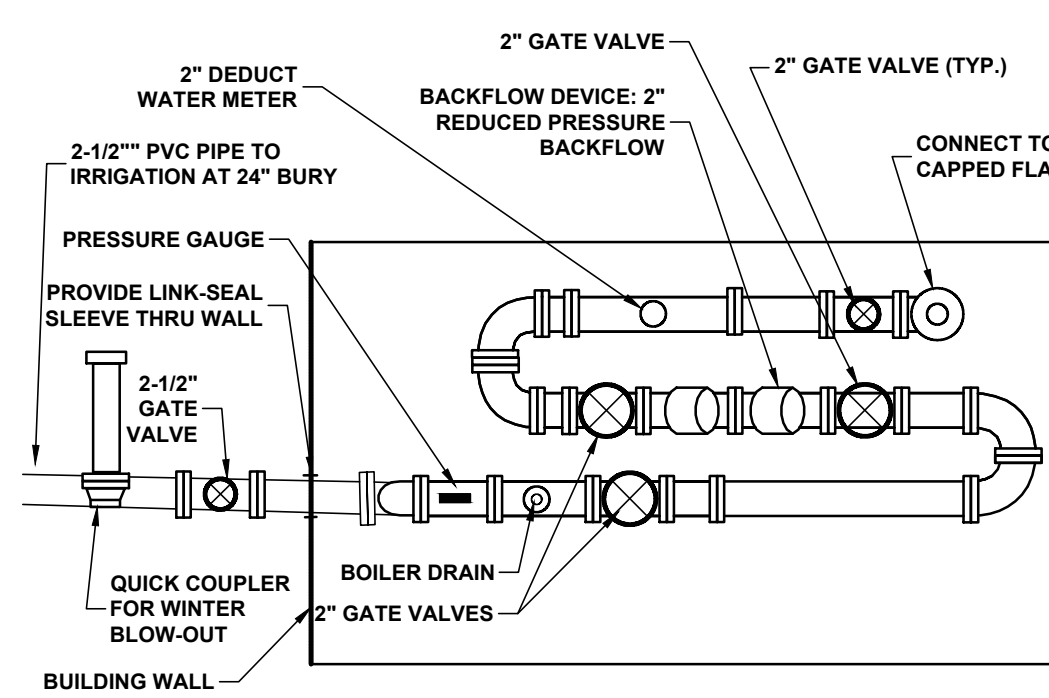
9 THRUST BLOCK (IRRIGATION LINES ONLY)
L.1.13



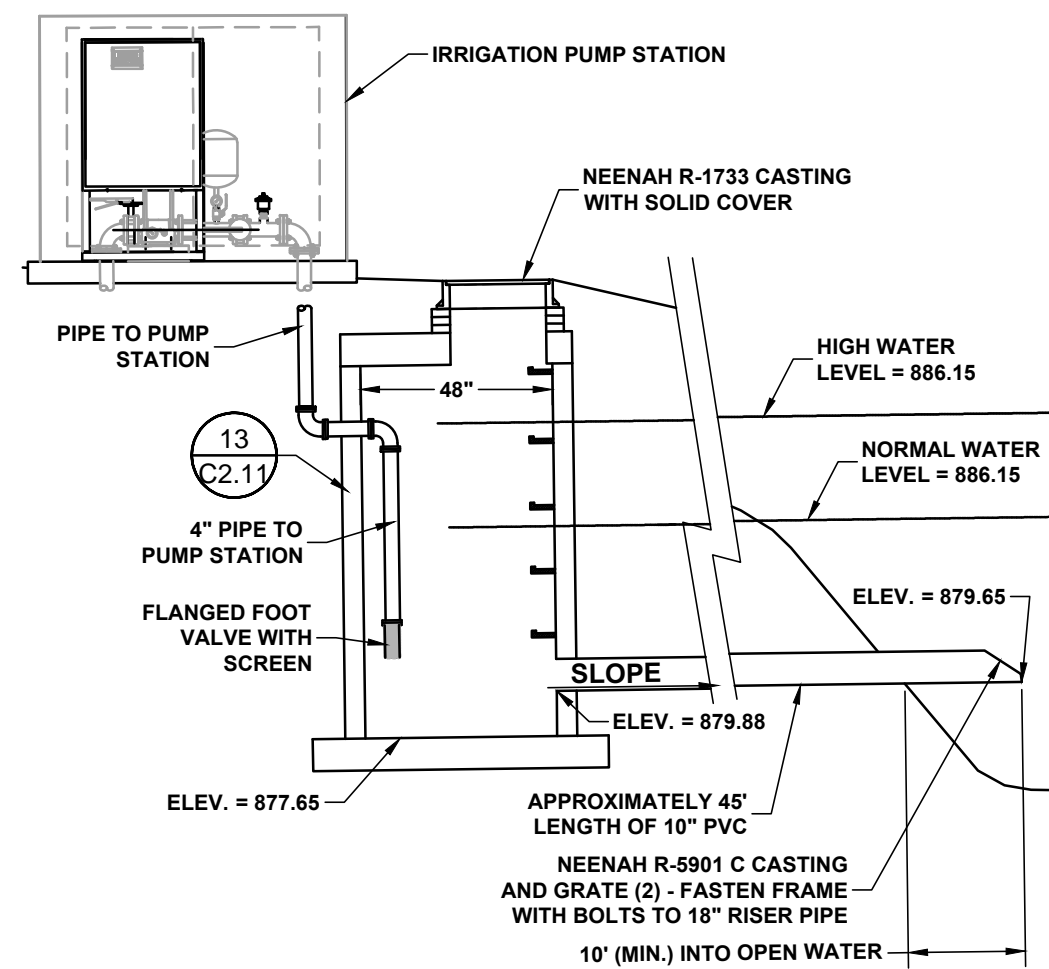
10 GEAR DRIVE SPRINKLER
L.1.13



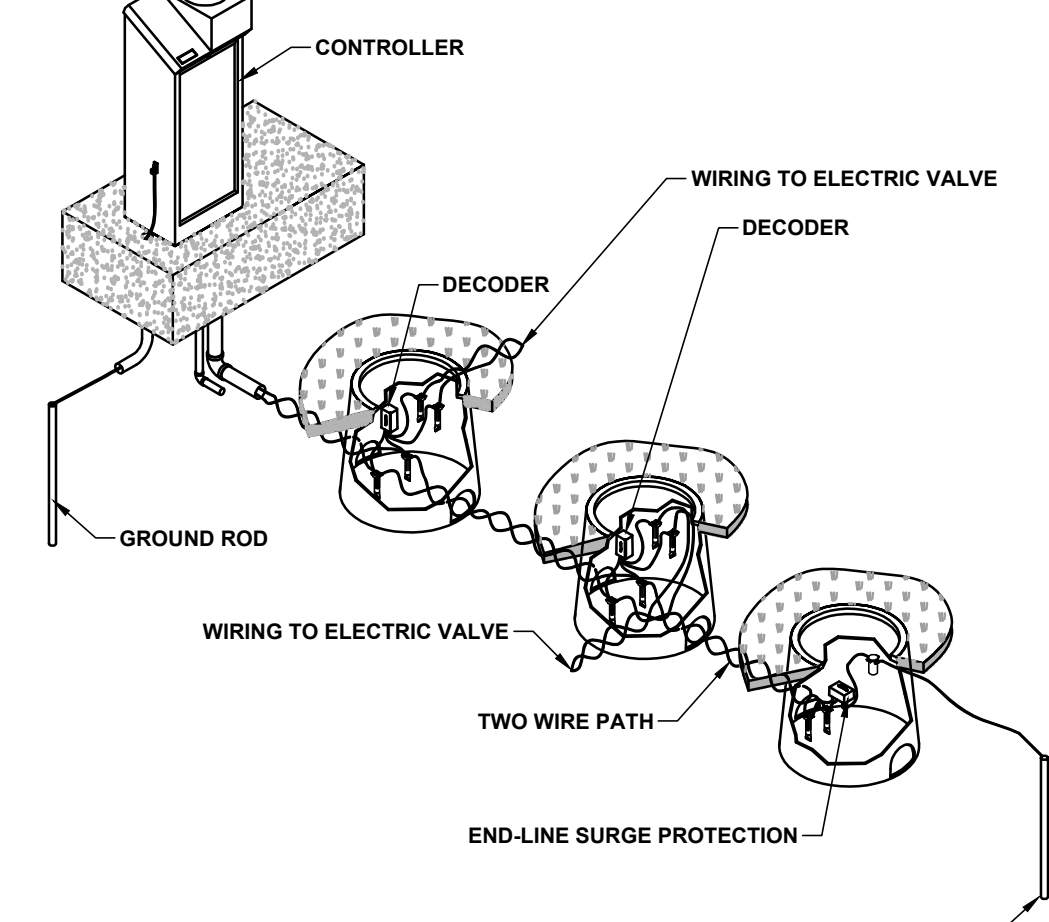
11 SPRAY HEAD SPRINKLER
L.1.13



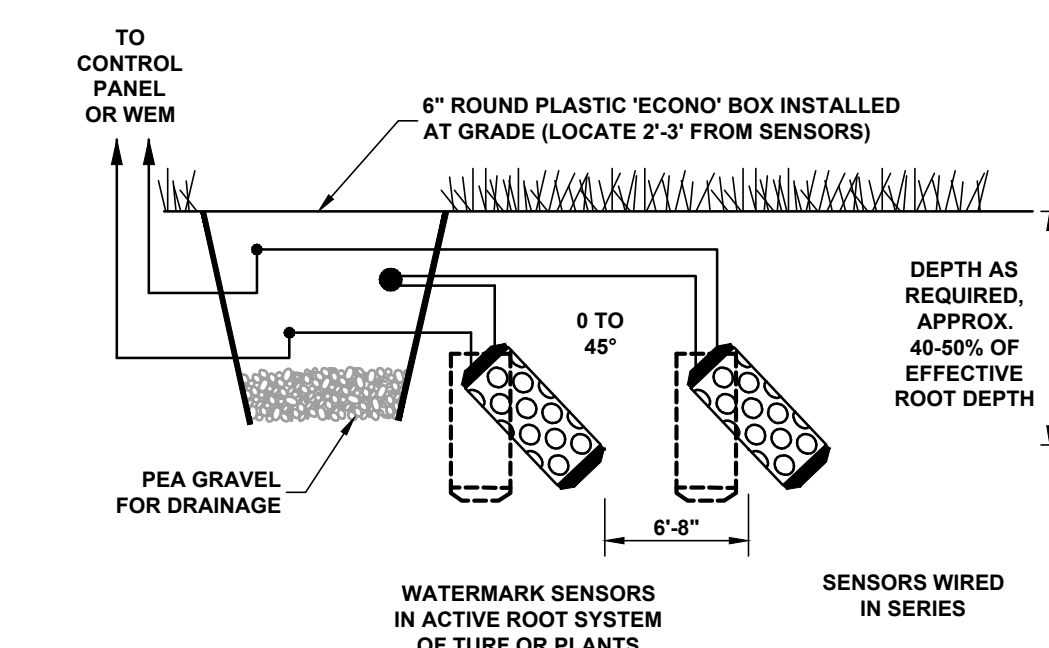
12 IRRIGATION SERVICE CONNECTION TO BUILDING
L.1.13



13 IRRIGATION WELL WELL (MANHOLE)/ INTAKE ASSEMBLY
L.1.13



14 IRRIGATION WIRING DIAGRAM
L.1.13



15 MOISTURE SENSOR
L.1.13

MNDOT 2016 SPEC

REQUIREMENT	RANGE	TEST METHOD
MATERIAL PASSING THE 3/4 IN [19MM]	100%	ASTM D 422
MATERIAL PASSING NO. 4 [4.75MM]	>85%	-
CLAY	5% - 35%	ASTM D 422
SILT	5% - 70%	ASTM D 422
SAND	10% - 75%	ASTM D 422
ORGANIC MATTER	3% - 15%	ASTM D 2974
pH	6.1 - 7.8	ASTM G 51

NOTE:
1. INSTALLATION OF 4" OF TOPSOIL MEETING MNDOT SPECIFICATION 3877A COMMON TOPSOIL BORROW, MAY BE REQUIRED ACROSS ALL DISTURBED AREAS.
2. A SOIL CERTIFICATION FROM A GEOTECHNICAL FIRM MUST BE PROVIDED VERIFYING THE TOPSOIL MEETS SPECIFICATION ALONG WITH LOAD TICKETS TO VERIFY THE SOURCE OF MATERIAL AND QUANTITY.
3. TOPSOIL MUST COME FROM A CITY APPROVED SOURCE.

APPROVED: 1 - 2016
CITY OF RAMSEY
CITY PLATE No. ERO-6
STANDARD DETAILS: TOPSOIL REQUIREMENTS

**TABLE A
MODIFIED CLASS 5
SPECIFICATIONS**

% PASSING

1"	100
3/4"	90 - 100
3/8"	50 - 80
No.4	35 - 70
No.10	20 - 60
No.40	10 - 35
No.200	5 - 10

NOTES:
1. THE AGGREGATE BASE CONSTRUCTION WILL BE ACCEPTED FOR PAYMENT IN ACCORDANCE WITH THE PROVISIONS IN TABLE A.
2. IF THE AGGREGATE BASE FAILS TO MEET THE REQUIREMENTS OF TABLE A THE MATERIAL CAN BE CORRECTED IN PLACE OR REMOVED AND REPLACED WITH MATERIAL THAT MEET THE REQUIREMENTS OF TABLE A.
3. IN THE EVENT THAT RECYCLED MATERIAL IS USED IT MUST MEET MNDOT REQUIREMENTS FOR RECYCLED BASE.

APPROVED: 2 - 2003
CITY OF RAMSEY
CITY PLATE No. STR-26
STANDARD DETAILS: MODIFIED CLASS 5 SPECIFICATIONS

MODIFIED CLASS 5 SPECIFICATIONS
L.1.13

NEW RAMSEY ELEMENTARY SCHOOL
16961 NOWTHEN BLVD NW
RAMSEY, MINNESOTA
ANOKA HENNEPIN SCHOOL DISTRICT NO. 11

SIGNATURE / SEAL

I hereby certify that this plan, specification, or report was prepared by me or under my direct supervision and that I am a duly licensed Landscape Architect under the laws of the State of Minnesota.

SIGNATURE

TYPED OR PRINTED NAME

DATE

LICENSE NUMBER

REVISIONS

REVISIONS

REVISIONS

REVISIONS

REVISIONS

DRAWN BY

CHECKED BY

JRP

ISSUED FOR

AGENCY REVIEW

REVIEW

ISSUE DATE

12/08/2017

SHEET NAME

DETAILS

ATS&R PROJECT NO.

17113

SHEET NUMBER

L1.13