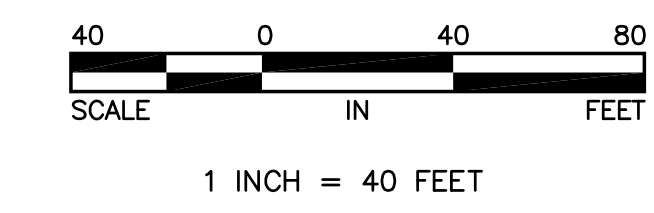


# COR STONE BROOK ACADEMY

CITY OF RAMSEY  
 COUNTY OF ANOKA  
 SEC. 28, T. 32, R. 25



- Denotes set concrete nail
- Denotes 1/2 inch by 14 inch iron monument set and marked with Minnesota License No. 18420.
- Denotes found iron monument
- (100.00) Denotes record distance

For the purposes of this plat the East line of Outlot B, COR ONE is assumed to bear N23°49'27"E.

KNOW ALL PERSONS BY THESE PRESENTS: That the City of Ramsey, a Minnesota Municipal Corporation under the laws of the State of Minnesota, owner of the following described property:

Outlot B, COR ONE, Anoka County, Minnesota.

Have caused the same to be surveyed and platted as COR STONE BROOK ACADEMY and do hereby dedicate to the public for public use the public way as shown on this plat.

In witness whereof said City of Ramsey, a Minnesota Municipal Corporation under the laws of the State of Minnesota, has caused these presents to be signed by its proper officers this \_\_\_\_ day of \_\_\_\_\_, 20\_\_.

CITY OF RAMSEY

Sarah Strommen, as Mayor  
 Jo Ann Thieling, as City Clerk

STATE OF \_\_\_\_\_

COUNTY OF \_\_\_\_\_

This instrument was acknowledged before me this \_\_\_\_ day of \_\_\_\_\_, 20\_\_ by Sarah Strommen, as Mayor, and Jo Ann Thieling, as City Clerk, of the City of Ramsey, a Minnesota Municipal corporation under the laws of the State of Minnesota, on behalf of the corporation.

Notary Public, \_\_\_\_\_

My commission expires \_\_\_\_\_

I Charles R. Christopherson do hereby certify that this plat was prepared by me or under my direct supervision; that I am a duly Licensed Land Surveyor in the State of Minnesota; that this plat is a correct representation of the boundary survey; that all mathematical data and labels are correctly designated on this plat; that all monuments depicted on this plat have been, or will be correctly set within one year; that all water boundaries and wet lands, as defined in Minnesota Statutes, Section 505.01, Subd. 3, as of the date of this certificate are shown and labeled on this plat; and all public ways are shown and labeled on this plat.

Dated this \_\_\_\_ day of \_\_\_\_\_, 20\_\_.

Charles R. Christopherson, Licensed Land Surveyor  
 Minnesota License No. 18420

STATE OF MINNESOTA  
 COUNTY OF ANOKA

This instrument was acknowledged before me this \_\_\_\_ day of \_\_\_\_\_, 20\_\_ by Charles R. Christopherson.

Notary Public, Minnesota.

My commission expires \_\_\_\_\_

City Council, City of Ramsey, Minnesota

This plat of COR STONE BROOK ACADEMY was approved and accepted by the City Council of the City of Ramsey, Minnesota at a regular meeting thereof held this \_\_\_\_ day of \_\_\_\_\_, 20\_\_, and said plat is in compliance with the provisions of Minnesota Statutes, Section 505.03, Subd. 2.

City Council, City of Ramsey, Minnesota

By : \_\_\_\_\_, Mayor

By : \_\_\_\_\_, Clerk

ANOKA COUNTY SURVEYOR

I hereby certify that in accordance with Minnesota Statutes, Section 505.021, Subd. 11, this plat has been reviewed and approved this \_\_\_\_ day of \_\_\_\_\_, 20\_\_.

Larry D. Holum,  
 Anoka County Surveyor

ANOKA COUNTY AUDITOR/TREASURER

Pursuant to Minnesota Statutes, Section 505.021, Subd. 9, taxes payable in the year 20\_\_ on the land hereinbefore described have been paid. Also, pursuant to Minnesota Statutes, Section 272.12, there are no delinquent taxes and transfer entered this \_\_\_\_ day of \_\_\_\_\_, 20\_\_.

Property Tax Administrator

By \_\_\_\_\_, Deputy

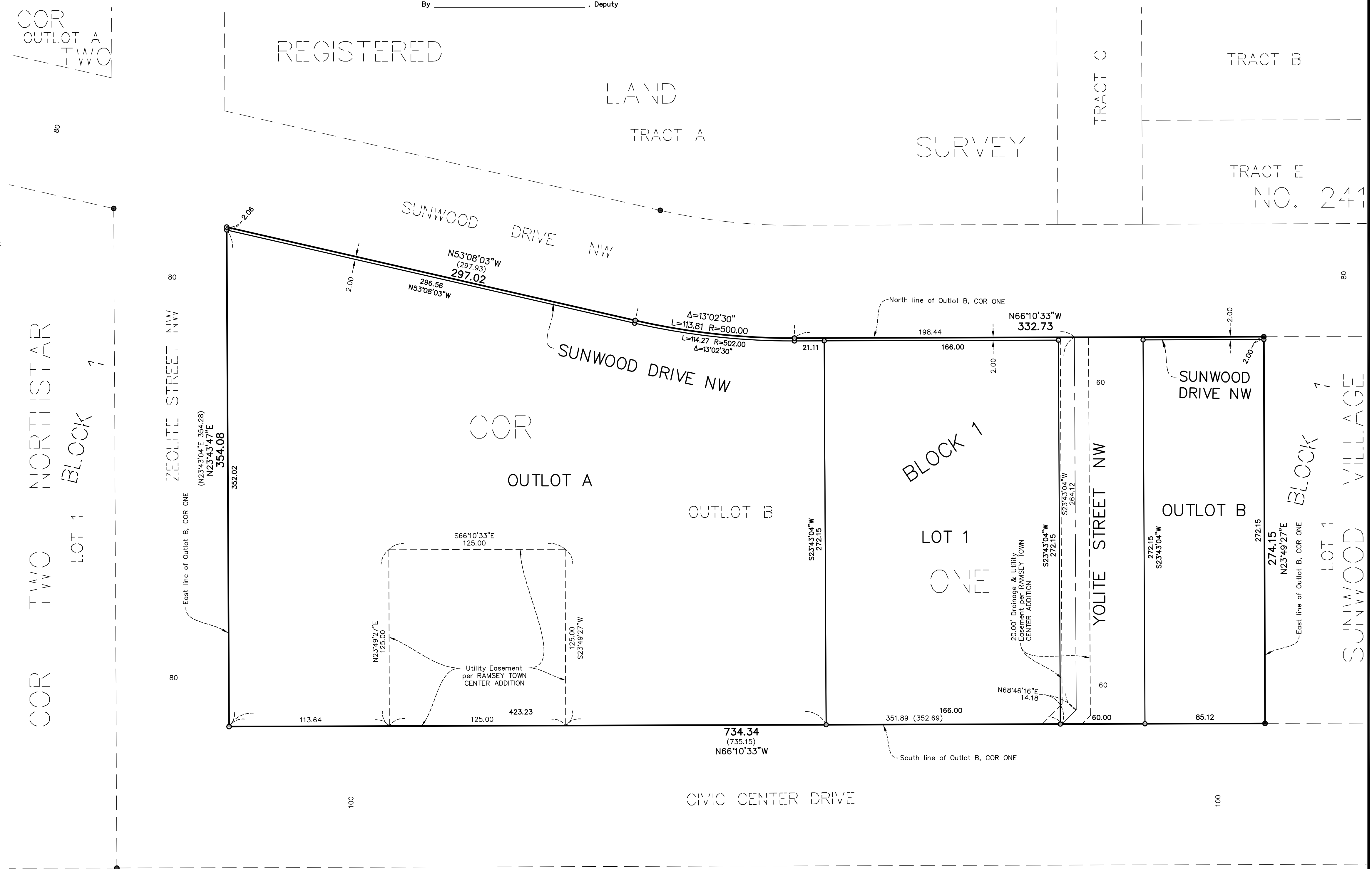
ANOKA COUNTY RECORDER/REGISTRAR OF TITLES

County of Anoka, State of Minnesota

I hereby certify that this plat of COR STONE BROOK ACADEMY was filed in the office of the County Recorder/Registrar of Titles for public record on this \_\_\_\_ day of \_\_\_\_\_, 20\_\_, at \_\_\_\_\_ o'clock \_\_\_\_ .M. and was duly recorded in Book \_\_\_\_\_ Page \_\_\_\_\_, as Document Number \_\_\_\_\_.

County Recorder/Registrar of Titles

By \_\_\_\_\_, Deputy



BURLINGTON NORTHERN RAILROAD

