



ARCHITECT

Inspire Architects  
465 148th Avenue NE  
Ham Lake, MN 55304

Contact: Jeff Hafferman  
Phone: 763-807-1044  
Email: jeff@architectmn.com  
Web: www.ArchitectMN.com

REVISIONS	DATE
1	5/20/16

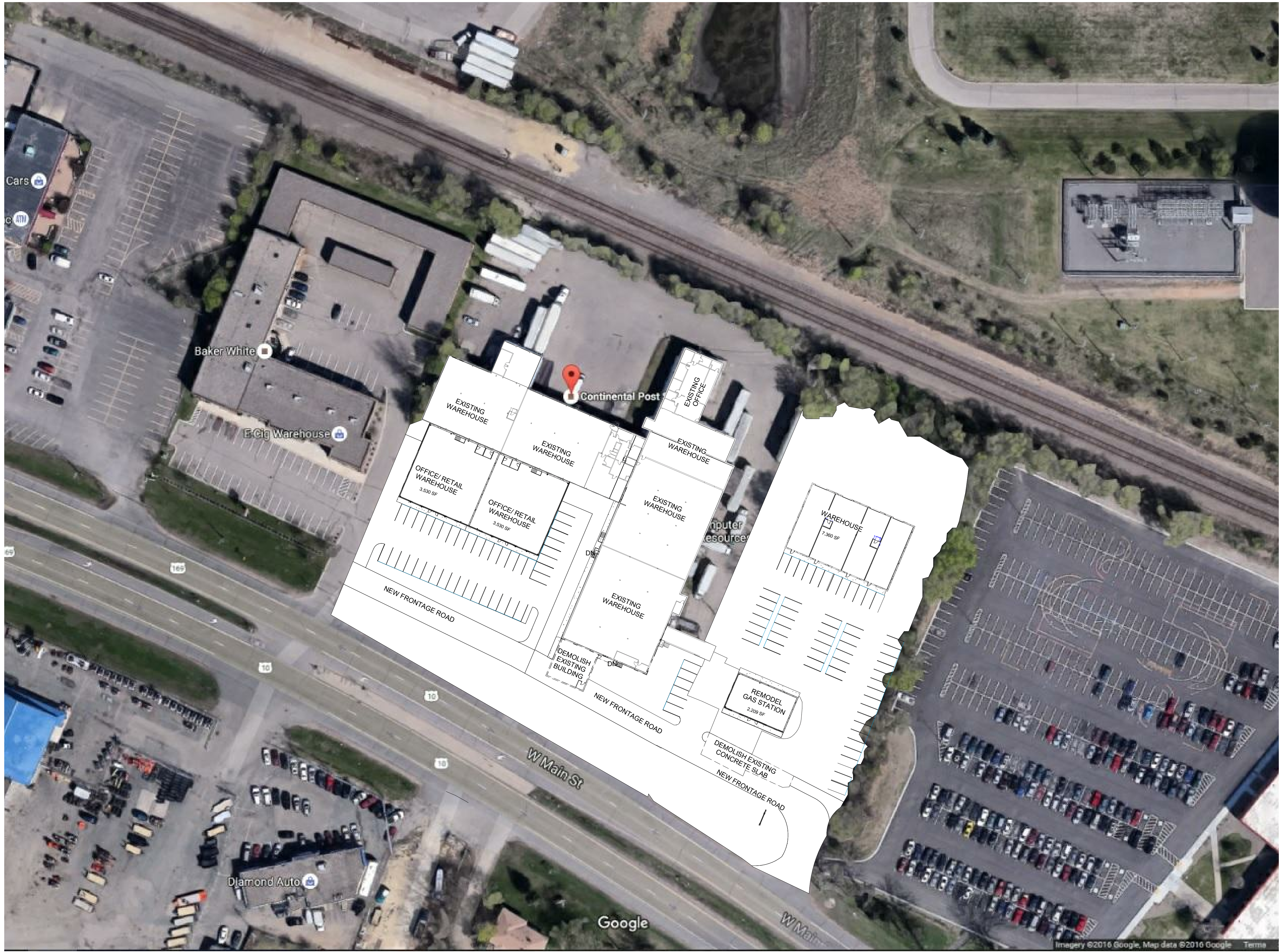


InSpire Architects  
465 148th Avenue NE  
Ham Lake MN 55304  
763-807-1044  
Jeff@ArchitectMN.com

The information contained herein may not be used or copied in any manner without the written permission of InSpire Architects.

I hereby certify that this plan, specification, or report was prepared by me or under direct supervision and that I am duly Licensed under the State of Minnesota by the State Board of Professional Engineers, Architects, and Surveyors (ICARB).  
Print Name: Jeff Hafferman  
Signature: *Jeff Hafferman*  
Date: 5/15/2017 12:01:28 PM  
Scale: 1" = 50'-0"

NOT FOR CONSTRUCTION



1 Site Plan- Long Term Growth Plan 1 to 50  
1" = 50'-0"

copyright © InSpire Architects Inc 2016

Sheet Title: Site Plan and Information  
Project Name: INDUSTRIAL BUILDING  
6043 HWY 10  
Ramsey, MN 55303

Project number: 2016-041  
Date: 5/15/2017 12:01:28  
Drawn by: PM BF  
Checked by: JH  
Construction Documents

A000



① Site Plan- Long Term Growth Plan 1 to 30  
1" = 30'-0"

REVISIONS	DATE



InSpire Architects  
465 148th Avenue NE  
Ham Lake MN 55304  
763-807-1044  
Jeff@ArchitectMN.com

The information contained herein may not be used or copied in any manner without the written permission of InSpire Architects.

I hereby certify that this plan, specification, or report was prepared by me or under direct supervision and that I am duly Licensed Professional Engineer under the State of Minnesota. I am duly Licensed Professional Engineer under the State of Minnesota. I am duly Licensed Professional Engineer under the State of Minnesota.

**NOT FOR CONSTRUCTION**

5/15/2017 12:01:30 PM

Sheet Title: Site Plans  
Project Name: INDUSTRIAL BUILDING  
6043 HWY 10  
Ramsey, MN 55303

Project number: 2016-041  
Date: 5/15/2017 12:01:30  
Drawn by: PM  
Author  
Checked by: Checker  
Construction Documents

A001

copyright © InSpire Architects Inc 2016





1 Site Plan- Long Term Growth Plan- Warehouse  
1" = 20'-0"

REVISIONS	DATE



InSpire Architects  
465 148th Avenue NE  
Ham Lake MN 55304  
763-807-1044  
Jeff@ArchitectMN.com

The information contained herein may not be used or copied in any manner without the written permission of InSpire Architects.

I hereby certify that this plan, specification, or report was prepared by me or under direct supervision and that I am a duly Licensed Professional Engineer under the State of Minnesota. I am a member of the Professional Engineers Board of Minnesota (PEBOM) and the Minnesota Society of Professional Engineers (MSPE).  
 5/15/2017 12:01:35 PM  
 Not for Construction

Sheet Title: Site Plans  
 Project Name: INDUSTRIAL BUILDING  
 6043 HWY 10  
 Ramsey, MN 55303

Project number: 2016-041  
 Date: 5/15/2017 12:01:35  
 Drawn by: PM  
 Author: Author  
 Checked by: Checker  
 Construction Documents

A003

copyright © InSpire Architects Inc 2016