



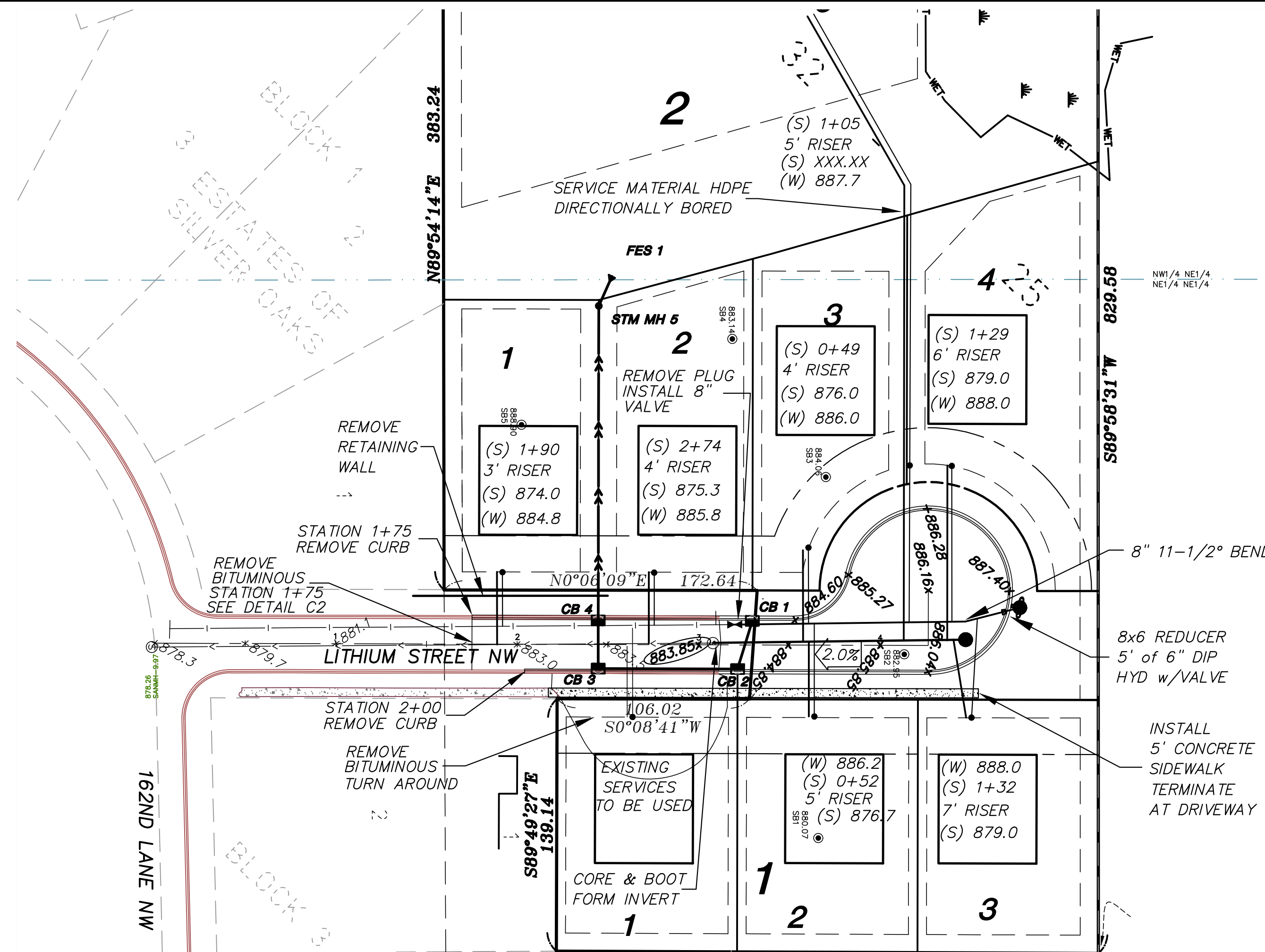
**SYMBOL LEGEND**

- SB-5 DENOTES SOIL BORING
- DENOTES SERVICE LOCATION
- v— DENOTES GATE VALVE
- DENOTES EXISTING HYDRANT
- ◆— DENOTES PROPOSED HYDRANT
- DENOTES CATCH BASIN
- DENOTES STORM SEWER MANHOLE
- DENOTES SANITARY MANHOLE

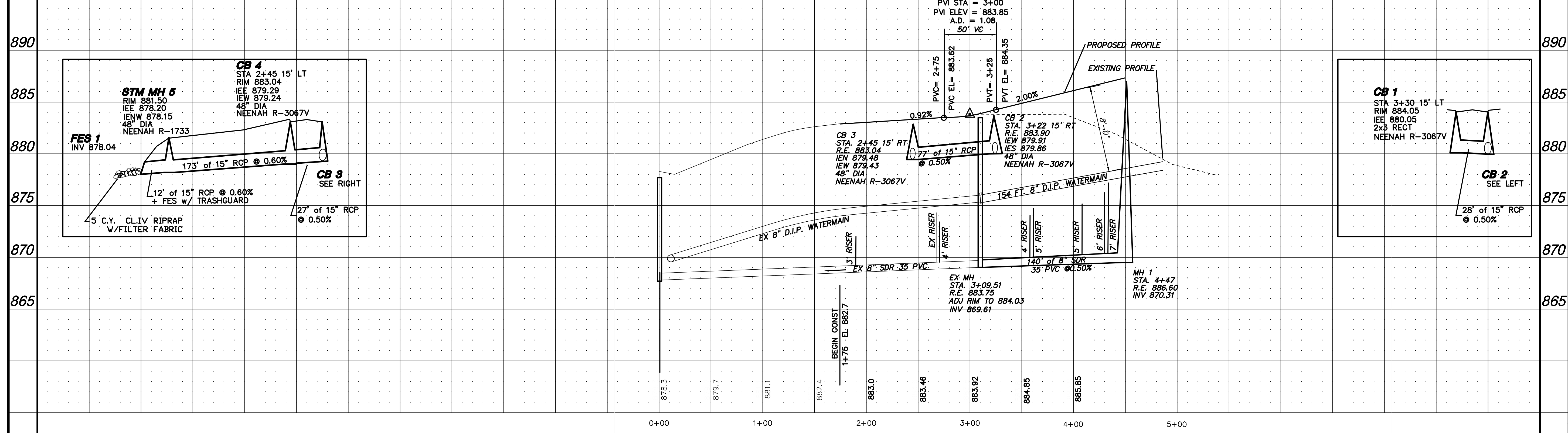
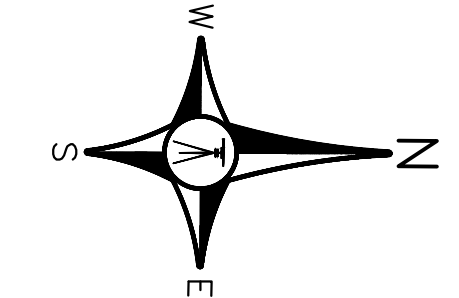
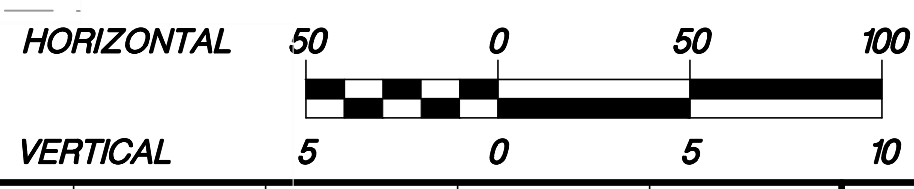
**LINE TYPE LEGEND**

- SETBACK
- - - EASEMENT
- LOT LINE
- R/W
- WETLAND
- SANITARY SEWER
- STORM SEWER
- WATERMAIN
- SIDEWALK
- CENTERLINE
- CURB & GUTTER

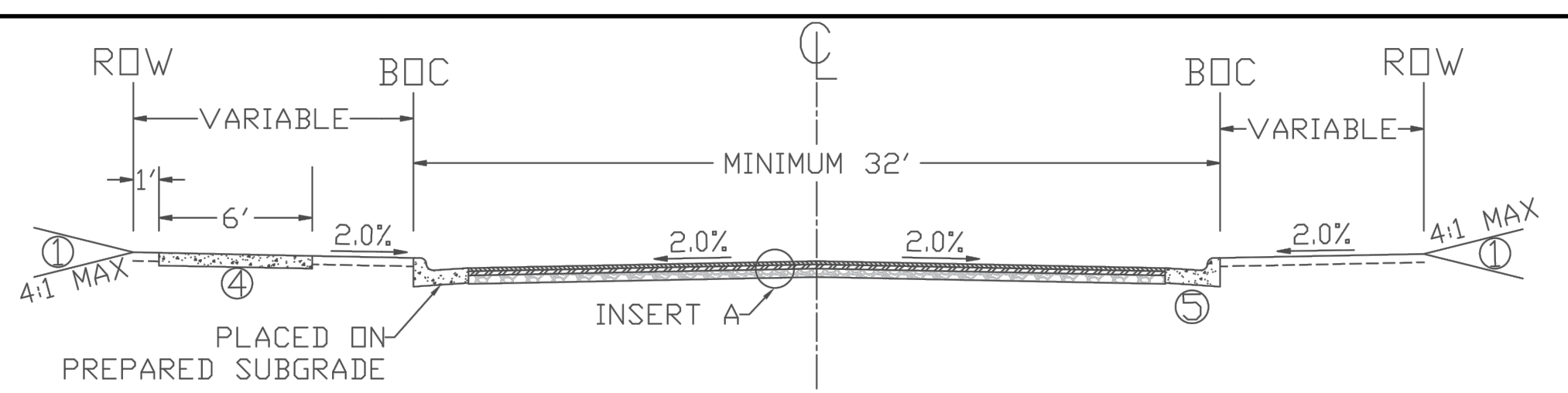
- (S) X+XX STATION FROM DOWNSTREAM MANHOLE
- (S) XXX.XX ELEVATION @ END STUB
- (W) XXX.XX CURB STOP SURFACE ELEVATION



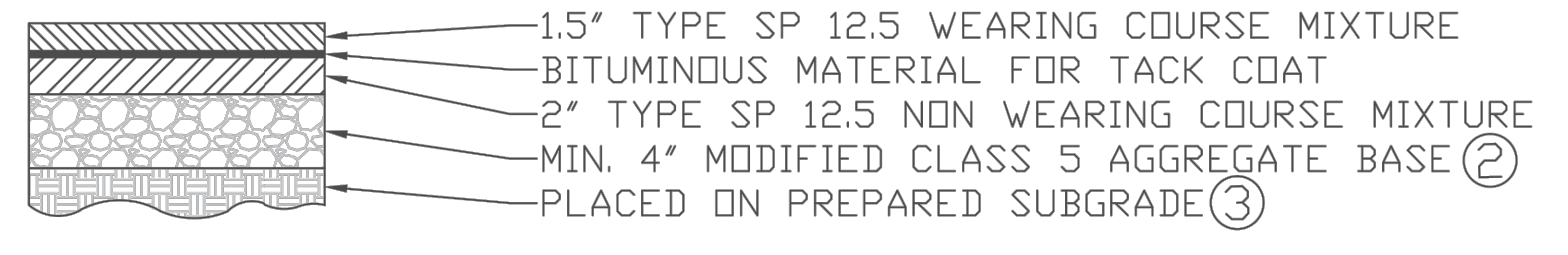
**LITHIUM STREET**



|  |          |           |  |         |  |               |  |
|--|----------|-----------|--|---------|--|---------------|--|
| BY   |          | REVISIONS |  | DATE    |  | CITY COMMENTS |  |
| BR   |          | 5/26      |  | 5/23/17 |  |               |  |
| <p><b>ROSELL ENGINEERING, LLC</b><br/>         6192 267 TH CT WYOMING, MN 55092<br/>         PHONE: 763.286.0521</p>   |          |           |  |         |  |               |  |
| <p><b>SILVER OAKS 2ND ADDITION</b><br/>         STREET &amp; UTILITY CONSTRUCTION<br/>         LITHIUM ST NW<br/>         RAMSEY, MINNESOTA</p>  |          |           |  |         |  |               |  |
| <p>I HEREBY CERTIFY THAT THIS PLAN, SPECIFICATION OR REPORT WAS PREPARED BY ME OR UNDER MY CLOSE PERSONAL SUPERVISION AND THAT I AM A LICENSED PROFESSIONAL ENGINEER UNDER THE LAWS OF THE STATE OF MINNESOTA.</p> |          |           |  |         |  |               |  |
| DATE   | REG. NO. |           |  |         |  |               |  |
| 5/2/17   | 11-80    |           |  |         |  |               |  |
| PROJECT  | CHECKED  |           |  |         |  |               |  |
| REG-17   | BTR      |           |  |         |  |               |  |
| APPROVED   | BTR      |           |  |         |  |               |  |
| C1   |          |           |  |         |  |               |  |



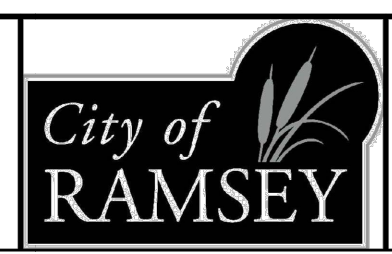
INSERT A:



REFERENCE NOTES:

- GRADE TO MATCH EXISTING SURFACE MINIMUM 4" COMMON TOPSOIL BORROW IN BOULEVARDS. SEE CITY PLATE No. ERD-6
- CLASS 5 GRADATION IS MODIFIED PER CITY PLATE No. STR-26
- CONTRACTOR SHALL SCARIFY AND COMPACT, ACCORDING TO THE SPECIFIED DENSITY METHOD, THE TOP 12 INCHES OF MATERIAL PRIOR TO PLACING ANY FILL MATERIALS OR CLASS 5 AGGREGATE BASE.
- ALL SIDEWALKS SHALL BE 6" THICK, 6' WIDE, PLACED ON PREPARED SUBGRADE.
- CONCRETE CURB AND GUTTER PER PLAN. SEE CITY PLATE No. STR-1.

APPROVED:  
4 - 2016



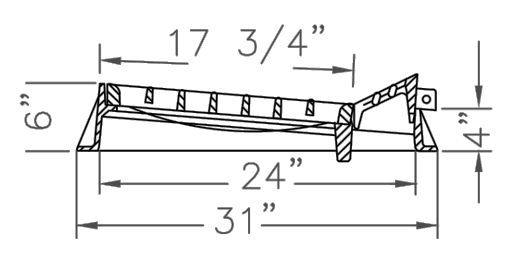
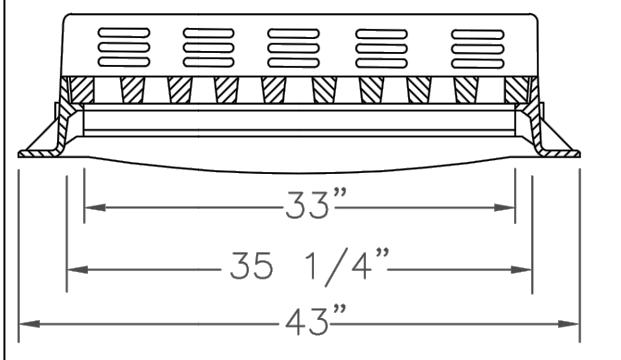
CITY PLATE  
No. STR-5

STANDARD  
DETAILS:  
32' - URBAN STREET

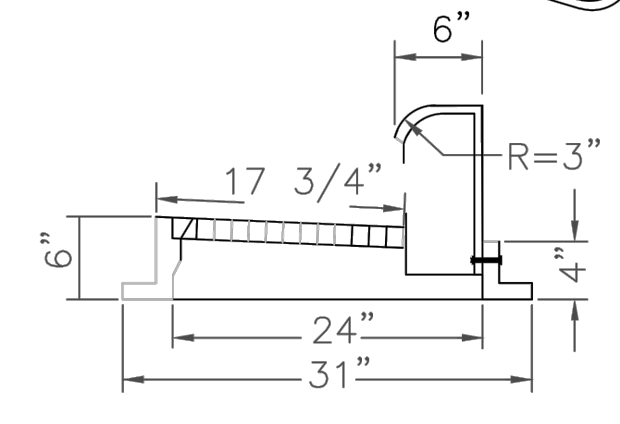
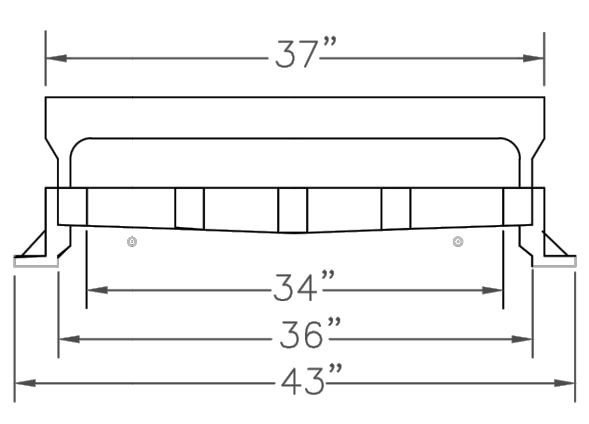
NOTE: NOT TO SCALE

BITUMINOUS BASE - LV3NW 35030BR-BASE  
BITUMINOUS WEAR - LV4WE 45030B-WEAR

NOTE:  
1. CATCH BASIN CASTING SHALL BE NEENAH R-3067 WITH GRATED BACK (BICYCLE SAFE) OR APPROVED EQUAL.  
2. FOR CATCH BASINS ADJACENT TO RADIUS, USE NEENAH R-3246R OR APPROVED EQUAL.

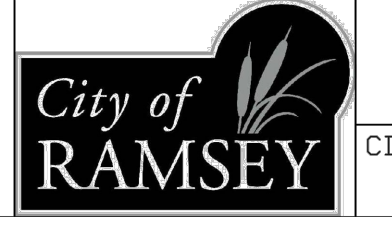


NOTE:  
1. CATCH BASIN CASTING SHALL BE NEENAH R-3246R OR APPROVED EQUAL

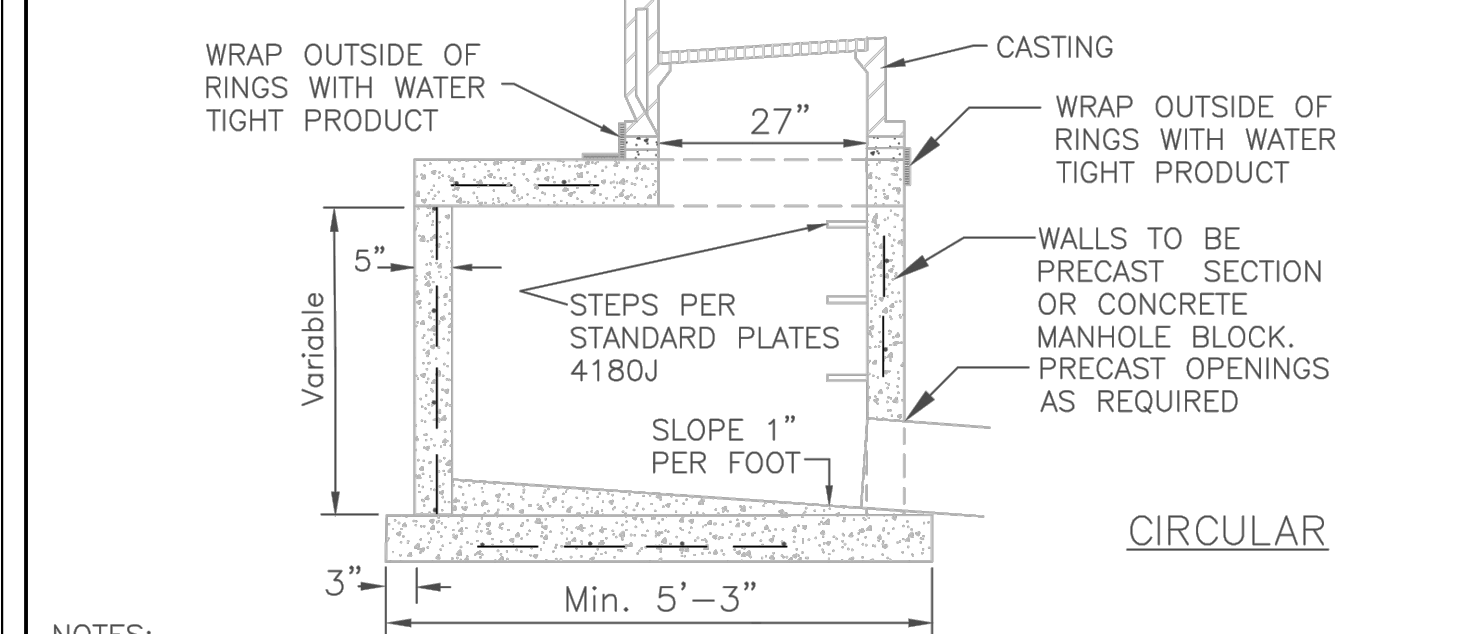
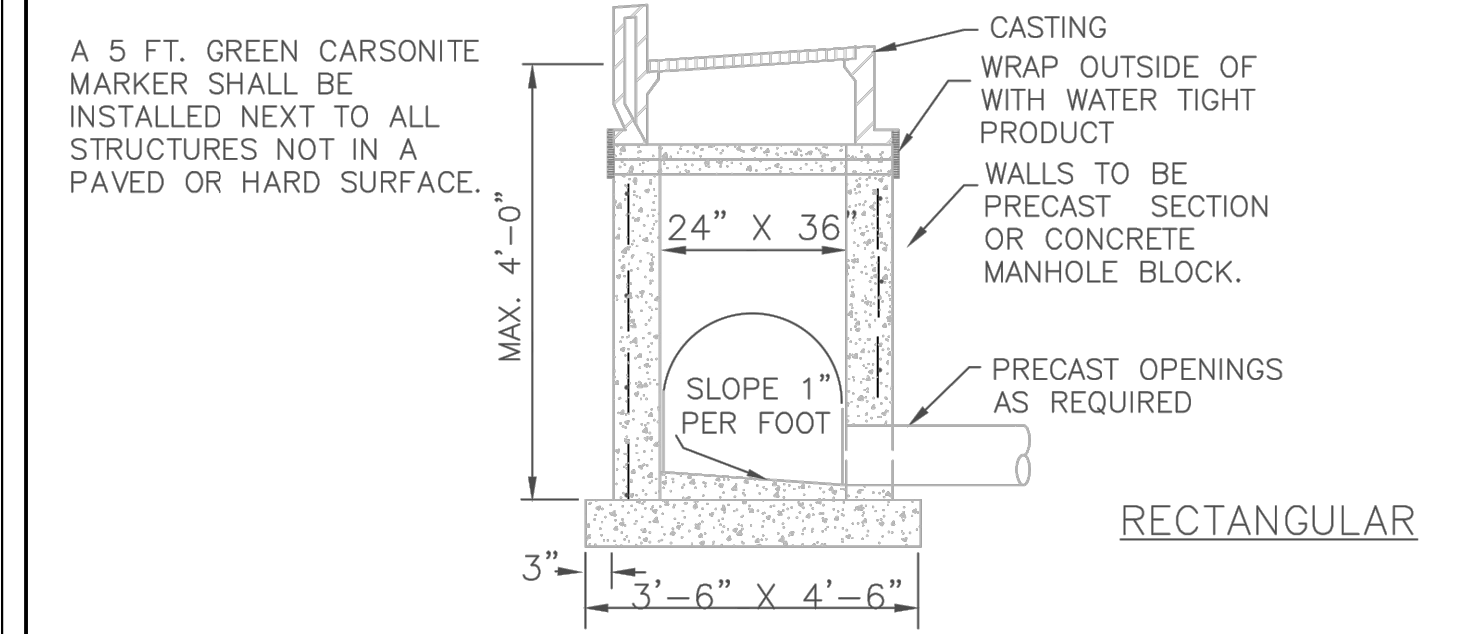


STANDARD CATCHBASIN CASTING

APPROVED:  
6 - 2016

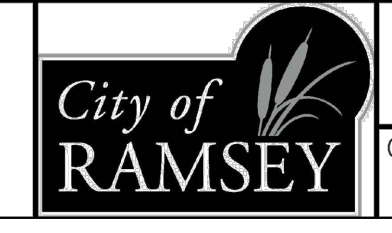


STANDARD DETAILS:  
STORMWATER CASTING  
CITY PLATE No. STD-4

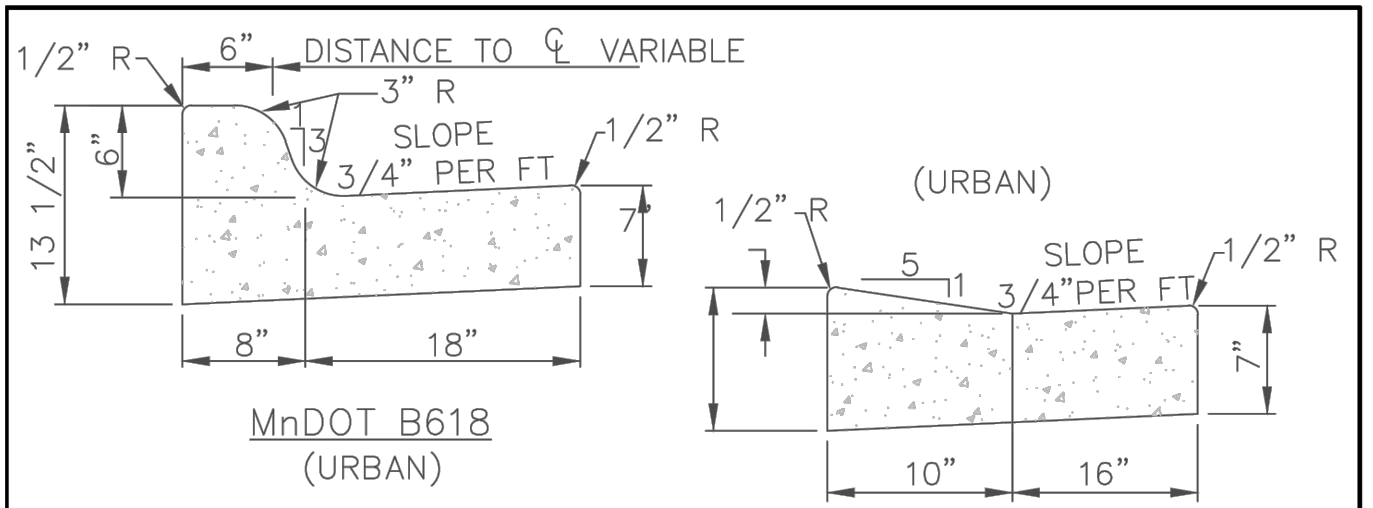


- NOTES:
- MANHOLE INVERT SHALL SLOPED TO PROVIDE A SMOOTH FLOW FROM INLET TO OUTLET
  - CONCRETE BASE SHALL BE 6" POURED IN PLACE OR 5" PRECAST SLAB.
  - CONCRETE ADJUSTING RINGS TO BE INSTALLED MAX. 7-2" RINGS, MIN. 2-2" RINGS
  - GROUT BETWEEN RINGS, SHIMS SHALL BE METAL, CONCRETE OR PLASTIC
  - INSPECTION OF MANHOLE REQUIRED BEFORE BACKFILLING
  - A 10 GAUGE SOLID COPPER TRACER WIRE IS REQUIRED WITH ALL STORM LINES.
  - CONDUCTIVITY IS REQUIRED ON ALL TRACER WIRE
  - STEPS ARE REQUIRED IF STRUCTURE FROM THE CASTING TO THE INVERT IS GREATER THAN 4 FEET
  - TRACER WIRES ARE TO END IN STRUCTURES, AT FINISHED GRADE ON ALL SERVICES AND STUBS

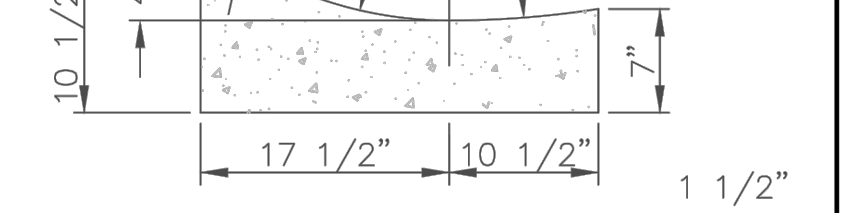
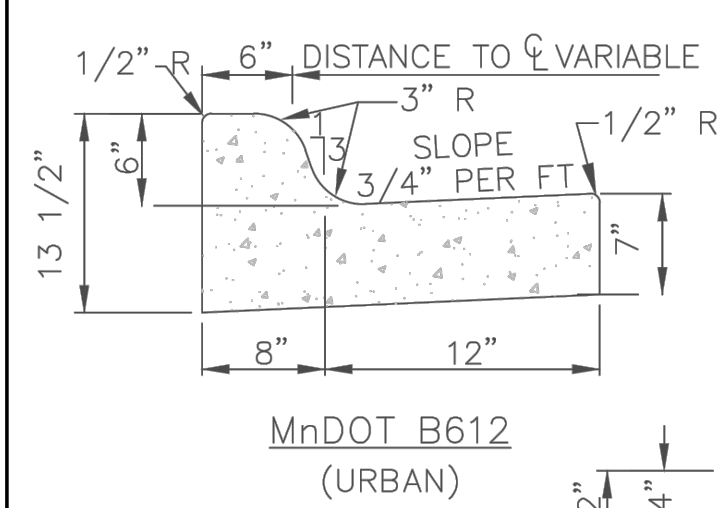
APPROVED:  
4 - 2007



STANDARD DETAILS:  
CATCH BASIN  
CITY PLATE No. STO-1

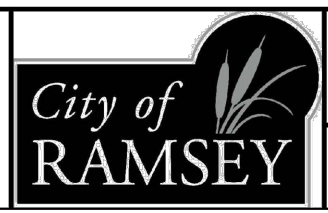


DRIVEWAY FOR B618



- NOTES:
- ON WEAR COURSE MILL THE EXISTING BITUMINOUS 1.5" BY 24" IN FRONT OF THE REPLACEMENT CURB.
  - ON BASE COURSE SAW CUT AND REMOVE EXISTING BITUMINOUS 18" IN FRONT OF THE REPLACEMENT CURB.

APPROVED:  
1 - 2016



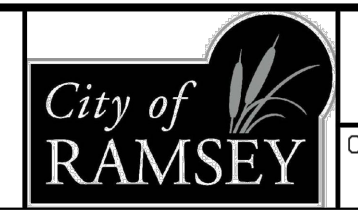
STANDARD DETAILS:  
CURB AND GUTTER  
CITY PLATE No. STR-1

## TABLE A MODIFIED CLASS 5 SPECIFICATIONS

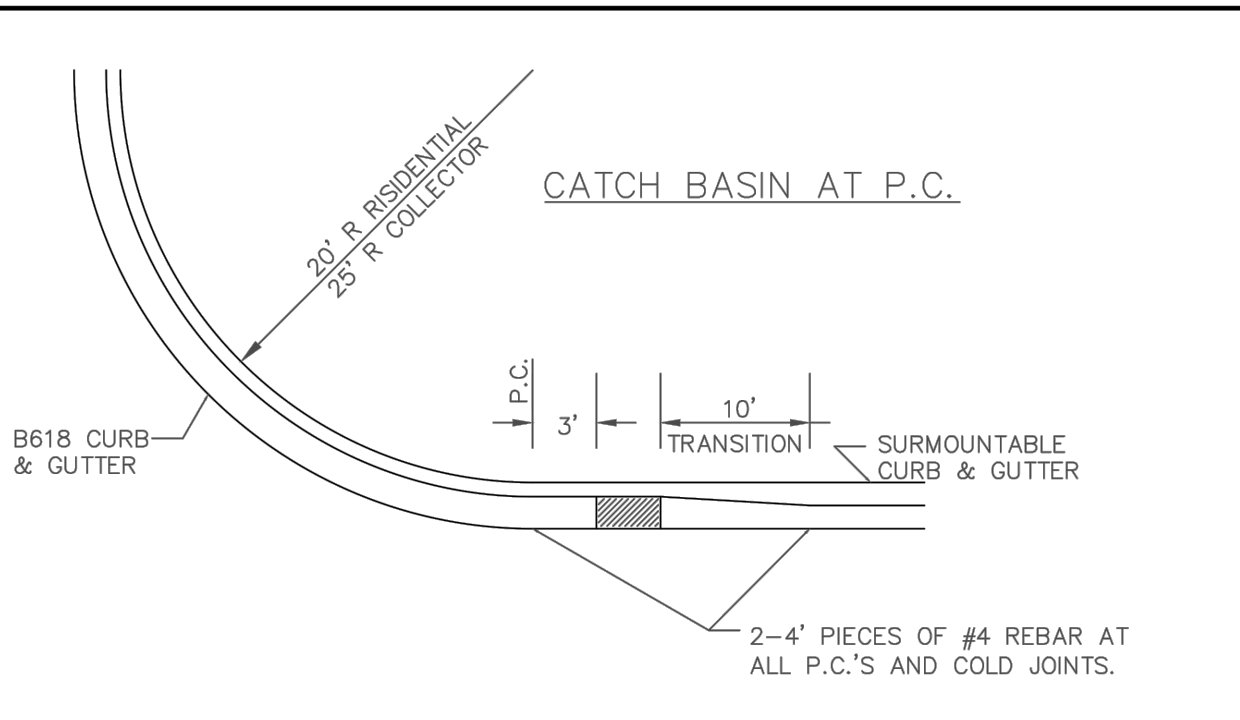
| % PASSING |          |
|-----------|----------|
| 1"        | 100      |
| 3/4"      | 90 - 100 |
| 3/8"      | 50 - 80  |
| No. 4     | 35 - 70  |
| No. 10    | 20 - 60  |
| No. 40    | 10 - 35  |
| No. 200   | 5 - 10   |

- NOTES:
- THE AGGREGATE BASE CONSTRUCTION WILL BE ACCEPTED FOR PAYMENT IN ACCORDANCE WITH THE PROVISIONS IN TABLE A.
  - IF THE AGGREGATE BASE FAILS TO MEET THE REQUIREMENTS OF TABLE A THE MATERIAL CAN BE CORRECTED IN PLACE OR REMOVED AND REPLACED WITH MATERIAL THAT MEET THE REQUIREMENTS OF TABLE A.
  - IN THE EVENT THAT RECYCLED MATERIAL IS USE IT MUST MEET MNDOT REQUIREMENTS FOR RECYCLED BASE.

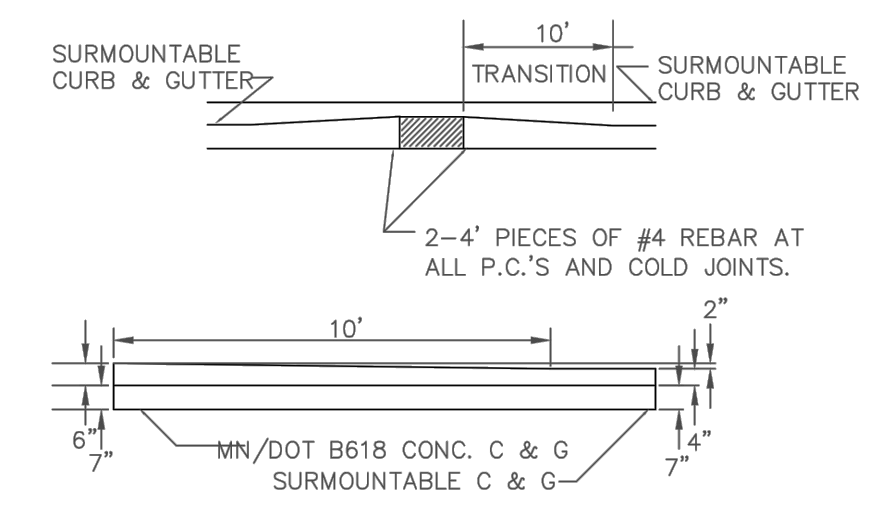
APPROVED:  
2 - 2003



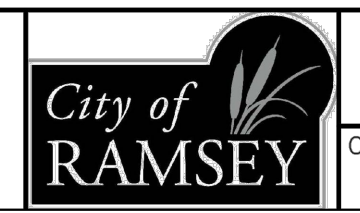
STANDARD DETAILS:  
MODIFIED CLASS 5  
SPECIFICATIONS  
CITY PLATE No. STR-26



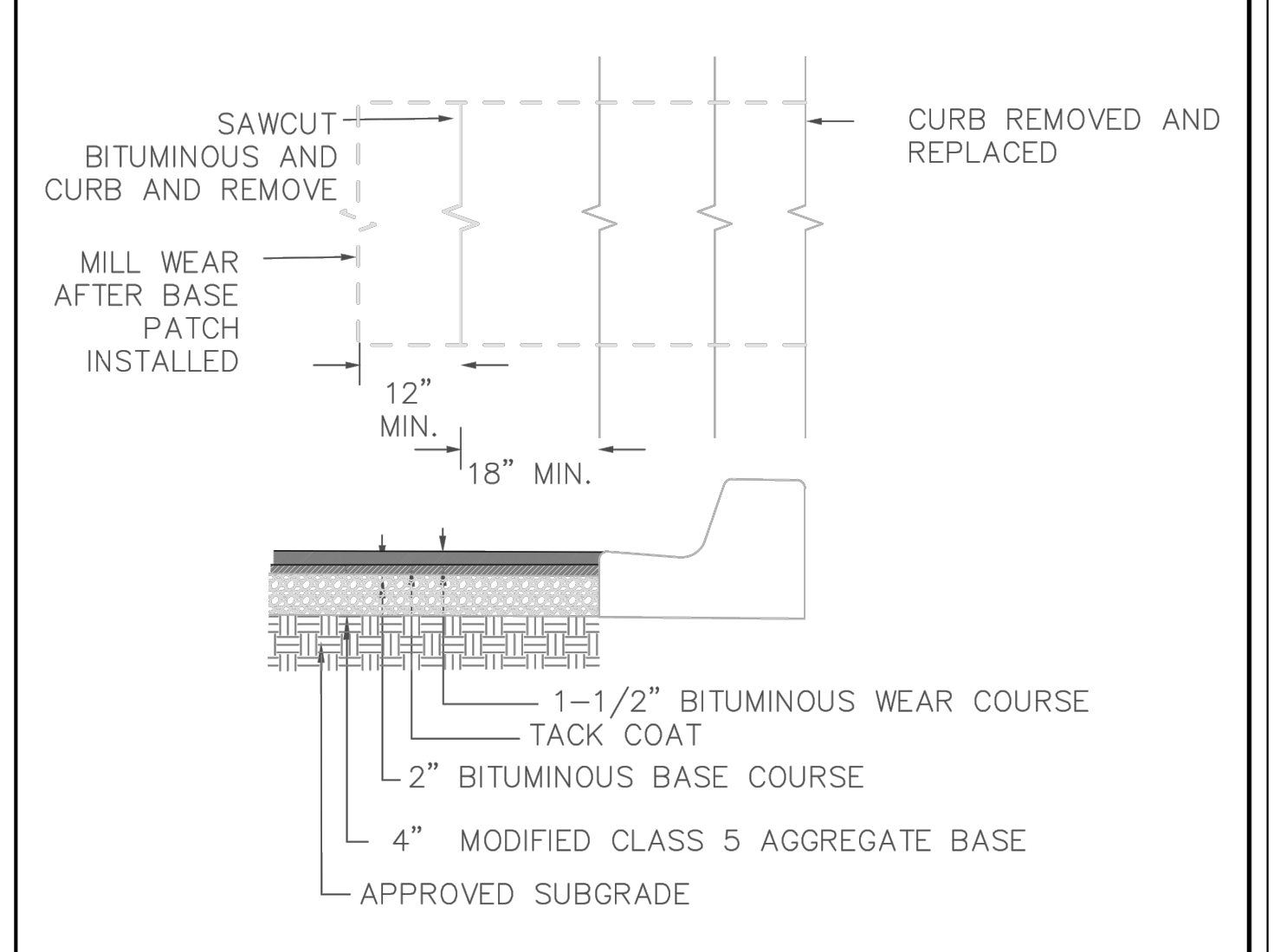
INLINE CATCH BASIN



APPROVED:  
4 - 2016

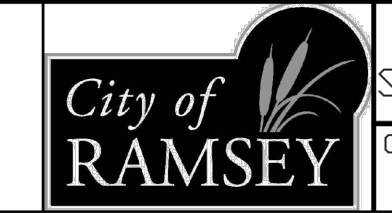


STANDARD DETAILS:  
CATCHBASIN PLACEMENT -  
SURMOUNTABLE CURB  
CITY PLATE No. STR-27



- NOTES:
- BITUMINOUS SHALL BE SAWCUT AND REMOVED AFTER CURB IS REPLACED.
  - CLASS 5 AND BITUMINOUS COURSES SHALL BE MECHANICALLY COMPACTED.
  - SEE CITY PLATE STR-26 FOR MODIFIED CLASS 5 SPECIFICATIONS.

APPROVED:  
1 - 2016



STANDARD DETAILS:  
STREET PATCHING STANDARDS  
CITY PLATE No. STR-25

| DATE    | REVISIONS          | BY |
|---------|--------------------|----|
| 5/21/17 | CITY COMMENTS 5/26 | BR |

ROSELL ENGINEERING, LLC  
6192 267 TH CT WYOMING, MN 55092  
PHONE: 763.286.0521

SILVER OAKS 2ND ADDITION  
DETAILS  
RAMSEY, MINNESOTA

I HEREBY CERTIFY THAT THIS PLAN, SPECIFICATION, OR REPORT WAS PREPARED BY ME OR UNDER MY CLOSE PERSONAL SUPERVISION AND THAT I AM A LICENSED PROFESSIONAL ENGINEER UNDER THE LAWS OF THE STATE OF MINNESOTA.  
DATE: 5/11/17 REG. NO. 24012  
Brent Roszell  
BRENT ROSZELL

| DRAWN | DATE    | SCALE  | PROJECT | CHECKED | APPROVED |
|-------|---------|--------|---------|---------|----------|
| BR    | 5/21/17 | 1"=50' | REG-17  | BTR     | BTR      |

C2





**SEQUENCE OF CONSTRUCTION/TIMING OF BMP INSTALLATION**

NO CONSTRUCTION OPERATIONS, INCLUDING REMOVALS, THAT REQUIRE EROSION & SEDIMENT CONTROL PER THE SWPPP CAN COMMENCE UNTIL THE OPERATOR'S EROSION CONTROL SUPERVISOR CERTIFIES THE PROPER INSTALLATION OF BMP'S AND A CHAIN OF RESPONSIBILITY FOR SWPPP IMPLEMENTATION IS CREATED FOR ALL OPERATORS ON THE SITE. PERIMETER SEDIMENT CONTROLS (SILT FENCE, INLET PROTECTION, CONSTRUCTION ENTRANCES, ETC.) SHALL BE INSTALLED PRIOR TO THE START OF CONSTRUCTION. THESE PRACTICES SHALL REMAIN IN PLACE UNTIL FINAL STABILIZATION IS ACHIEVED. OPERATOR SHALL IMPLEMENT THE NECESSARY ON-SITE BMP'S IN ACCORDANCE WITH THE NPDES PERMIT REQUIREMENTS TO PREVENT NUISANCE CONDITIONS (MN RULES 7050.2010) FROM ANY DISCHARGES UNDER COVERAGE OF THE NPDES PERMIT. IN SOME CASES, MULTIPLE OR REDUNDANT APPLICATIONS OF SOME BMP'S MAY BE NEEDED TO MEET THESE REQUIREMENTS.

**INSPECTION, SWPPP AMENDMENTS, RECORD KEEPING, & TRAINING**

- 1. THE SWPPP CHAIN OF RESPONSIBILITY MUST BE AMENDED BY THE OPERATOR WHEN THE IDENTITY OF RESPONSIBLE SITE OPERATORS (EROSION CONTROL SUPERVISOR, SUB-CONTRACTORS, ETC.) ARE KNOWN.
2. THE OPERATOR MUST INSPECT THE ENTIRE CONSTRUCTION SITE AT LEAST ONCE EVERY SEVEN (7) DAYS DURING ACTIVE CONSTRUCTION AND WITHIN 24 HOURS AFTER A RAINFALL EVENT GREATER THAN 0.5 INCHES IN 24 HOURS. THE OPERATOR SHALL PROVIDE A RAINFALL GAUGE ON-SITE, WITHIN ONE MILE OF THE SITE, OR SOURCE OF THE WEATHER REPORTING SYSTEM THAT USES SITE SPECIFIC RAINFALL DATA FROM RADAR SUMMARIES. THE LOCATION AND SOURCE OF THE RAINFALL GAUGE OR REPORTING SYSTEM MUST BE DOCUMENTED IN THE FIRST SWPPP INSPECTION REPORT. THE INSPECTION FREQUENCY MAY BE REDUCED TO ONCE PER MONTH, IF SITE CONDITIONS MEET PART IV.E3 OF THE NPDES PERMIT. ALL INSPECTIONS AND MAINTENANCE CONDUCTED MUST BE RECORDED IN WRITING BY THE OPERATOR AND RETAINED WITH THE SWPPP. RECORDS OF EACH INSPECTION AND MAINTENANCE ACTIVITY SHALL INCLUDE:
A. DATE, TIME AND NAME OF PERSON(S) CONDUCTING INSPECTIONS;
B. FINDINGS OF INSPECTIONS, INCLUDING RECOMMENDATIONS FOR CORRECTIVE ACTIONS;
C. CORRECTIVE ACTIONS TAKEN (INCLUDING DATES, TIMES AND PARTY COMPLETING MAINTENANCE ACTIVITIES); INCLUDING DOCUMENTATION/PHOTOS OF IMPLEMENTED BMP'S INTENDED TO CORRECT A PROBLEM BUT FAILED.
D. DATE AND AMOUNT OF ALL RAINFALL EVENTS GREATER THAN 1/8 INCH (0.5 INCHES) IN 24 HOURS;
E. DOCUMENTATION OF CHANGES MADE TO THE SWPPP.
3. SWPPP AMENDMENTS AND SITE PLANS WILL BE PREPARED BY THE OPERATOR AND SUBMITTED TO THE OWNER FOR REVIEW AND WRITTEN APPROVAL BY THE PROJECT OWNER (OR DESIGNATED REPRESENTATIVE). ALL OWNER ACCEPTED AND DENIED SWPPP AMENDMENTS AND SITE PLANS MUST BE RECORDED IN WRITING RETAINED WITH THE SWPPP.
4. THE SWPPP SHALL BE AMENDED TO INCLUDE ADDITIONAL OR MODIFIED BMP'S, DESIGNED TO CORRECT IDENTIFIED PROBLEMS OR ADDRESS SITUATIONS (UNDER PART III.B OF THE NPDES PERMIT), PRIOR TO CONDUCTING SPECIFIC STAGES/PHASES OF THE PROJECT, AS REQUIRED BY THE OWNER AND DEFINED IN THIS PROJECT SWPPP.

Table with 3 columns: SUMMARY OF OPERATOR PREPARED, SWPPP AMENDMENTS (REQUIRED BY OWNER), and RESPONSIBILITY. Rows include BMP AMENDMENTS, METHODS TO MINIMIZE SOIL COMPACTION, STEEP SLOPES PHASING PLAN, SPILL PREVENTION & RESPONSE PLAN, and DEWATERING PLAN.

- 1. THE SWPPP (ORIGINAL OR COPIES), ALL CHANGES TO THE SWPPP, PROJECT MANUAL, AND INSPECTIONS/MAINTENANCE RECORDS MUST BE KEPT AT THE SITE DURING CONSTRUCTION BY THE OPERATOR WHO HAS POSSESSION/CONTROL OF THAT PORTION OF THE SITE. THE SWPPP CAN BE KEPT IN THE FIELD OFFICE OR ON SITE VEHICLE DURING NORMAL WORKING HOURS.
2. THE OPERATOR MUST ASSIGN A TRAINED INDIVIDUAL (S) (PURSUANT TO PARTS III.A.3 & III.F) TO OVERSEE THE IMPLEMENTATION, MAINTENANCE, AND REPAIR OF BMP'S. THIS INDIVIDUAL (S) SHALL ALSO PERFORM INSPECTIONS, REVISE/AMEND THE SWPPP (DOCUMENT IN SWPPP AS NECESSARY), AND BE AVAILABLE FOR AN ONSITE INSPECTION WITHIN 72 HOURS UPON REQUEST BY THE PERMITTED OWNER FOR ITS DESIGNEE), LOCAL GOVERNMENT UNITS, OR MPCA.

**POLLUTION PREVENTION MANAGEMENT MEASURES**

POTENTIAL SOURCES OF POLLUTANTS FROM CONSTRUCTION ACTIVITIES INCLUDE:
• SEDIMENT AND FUGITIVE DUST GENERATED FROM CLEARING AND GRUBBING, IMPORT/EXPORT OPERATIONS, REMOVALS/COMPACTION, MASS/FINE GRADING, EXCAVATIONS, TRENCHING, TOPSOIL STRIPING STOCKPILING, WET/DRY PAVEMENT CUTTING, STREET CONSTRUCTION.
• BASIC/ACIDIC PH LEVELS FROM CURB AND GUTTER, MANHOLE STRUCTURES, SIDEWALKS, DRIVEWAY APRONS, FOUNDATIONS, BRIDGE ABUTMENTS, WET/DRY PAVEMENT CUTTING, MASONRY WASHOUT/CLEANOUT.
• EXCESS NUTRIENTS FROM LANDSCAPING INSTALLATIONS, SOIL ADDITIVES, FERTILIZATION, MULCHING.
• HYDROCARBONS FROM STREET CONSTRUCTION, DEMOLITION/REMOVALS, WET/DRY PAVEMENT CUTTING.

OPERATOR WILL COMPLY WITH ALL OF THE POLLUTION PREVENTION AND MANAGEMENT MEASURES IDENTIFIED IN THE NPDES-CSW PERMIT. OPERATOR WILL SUBMIT A SPILL PREVENTION AND RESPONSE PLAN (SPRP) TO THE ENGINEER PRIOR TO ANY CONSTRUCTION ACTIVITY. THE SPRP MUST SATISFACTORILY ADDRESS (AT A MINIMUM) THE FOLLOWING NPDES REQUIREMENTS BY THE PROPOSED IMPLEMENTATION AND MAINTENANCE OF APPROPRIATE BMP'S:

NO-EXPOSURE: CONSTRUCTION AND BUILDING PRODUCTS (THAT HAVE THE POTENTIAL TO LEACH POLLUTANTS), PESTICIDES, HERBICIDES, INSECTICIDES, FERTILIZERS, TREATMENT CHEMICALS, AND LANDSCAPING MATERIALS MUST BE UNDER COVER (PLASTIC SHEETING OR TEMPORARY ROOFS) TO MINIMIZE CONTACT WITH STORMWATER AND PRECIPITATION.

SOLID WASTE: (SEDIMENT, ASPHALT, CONCRETE MILLINGS, CONSTRUCTION, AND DEMOLITION DEBRIS) AND OTHER WASTES MUST BE DISPOSED OF PROPERLY AND SHALL COMPLY WITH MPCA DISPOSAL REQUIREMENTS (CH. 7035).

HAZARDOUS MATERIALS: (E.G. GAS, DIESEL OIL, ANTIFREEZE, PAINT SOLVENTS, SOAPS, DETERGENTS, WOOD PRESERVATIVES, CLEANING SOLVENTS, CURING COMPOUNDS, ACIDS, ETC.) MUST BE STORED IN SEALED CONTAINERS (WITH SECONDARY SPILL CONTAINMENT) IN RESTRICTED ACCESS AREAS TO PREVENT VANDALISM. STORAGE AND DISPOSAL OF HAZARDOUS WASTE AND MATERIALS MUST BE IN COMPLIANCE WITH MPCA REGULATIONS (CH. 7045) INCLUDING SECONDARY CONTAINMENT.

PORTABLE TOILETS: MUST BE POSITIONED AND SECURED SO THEY ARE NOT TIPPED OR KNOCKED OVER. WASTE MUST BE DISPOSED OF PROPERLY IN ACCORDANCE WITH MPCA GUIDELINES (CH. 7041).

EQUIPMENT/VEHICLE FUELING, EXTERNAL WASHING, AND MAINTENANCE PRACTICES: WHEN VEHICLE FUELING, MAINTENANCE, OR EXTERNAL WASHING MUST OCCUR ON-SITE, THE ACTIVITY IS LIMITED TO A CONTAINED PORTION OF THE STAGING AREA, UNLESS INFEASIBLE THROUGH A SWPPP AMENDMENT. PROCEDURES FOR SPILL RESPONSE AND MATERIALS FOR CONTAINMENT AND CLEAN UP (DRIP PANS, DRY ABSORBENTS, AND SPILL KITS) WILL BE AVAILABLE AT ALL TIMES ON-SITE. ENGINE DEGREASING IS PROHIBITED ON-SITE.

CONCRETE, STUCCO, PAINT, CURING COMPOUNDS, SOLVENTS, AND OTHER WASHOUT WASTES: TEMPORARY OR LONG-TERM STORAGE OF WASHOUT WASTE IS PROHIBITED ON-SITE (SLURRY MUST BE HAULED IMMEDIATELY OFF-SITE). OPERATOR MUST SUBMIT A CONCRETE WASHOUT PLAN TO THE PROJECT ENGINEER FOR APPROVAL OF ALL ON-SITE WASHOUT LOCATIONS. ON-SITE WASHOUT LOCATIONS MUST BE LOCATED 200 FEET FROM AN ENVIRONMENTALLY SENSITIVE AREA AND SURFACE WATERS, HAVE "CONCRETE WASHOUT AREA" SIGNAGE, AND BE CONTAINED IN A LEAK PROOF CONTAINER OR IMPERMEABLE LINER. LIQUID AND SOLID WASTES SHOULD NOT CONTACT THE GROUND (UNLESS PERMITTED IN THE CONCRETE WASHOUT PLAN), BE CONTAINED TO PREVENT RUNOFF FROM THE WASHOUT LOCATION, AND MUST BE DISPOSED OF PROPERLY AND IN COMPLIANCE WITH MPCA REGULATIONS.

CONCRETE, STUCCO, PAINT, CURING COMPOUNDS, SOLVENTS, AND OTHER WASHOUT WASTES: TEMPORARY OR LONG-TERM STORAGE OF WASHOUT WASTE IS PROHIBITED ON-SITE (SLURRY MUST BE HAULED IMMEDIATELY OFF-SITE). OPERATOR MUST SUBMIT A CONCRETE WASHOUT PLAN TO THE PROJECT ENGINEER FOR APPROVAL OF ALL ON-SITE WASHOUT LOCATIONS. ON-SITE WASHOUT LOCATIONS MUST BE LOCATED 200 FEET FROM AN ENVIRONMENTALLY SENSITIVE AREA AND SURFACE WATERS, HAVE "CONCRETE WASHOUT AREA" SIGNAGE, AND BE CONTAINED IN A LEAK PROOF CONTAINER OR IMPERMEABLE LINER. LIQUID AND SOLID WASTES SHOULD NOT CONTACT THE GROUND (UNLESS PERMITTED IN THE CONCRETE WASHOUT PLAN), BE CONTAINED TO PREVENT RUNOFF FROM THE WASHOUT LOCATION, AND MUST BE DISPOSED OF PROPERLY AND IN COMPLIANCE WITH MPCA REGULATIONS.

BURNING: BURNING OF GARBAGE, CONSTRUCTION DEBRIS, TREES, BRUSH, OR OTHER VEGETATIVE MATERIAL IS NOT ALLOWED ON-SITE, UNLESS PRIOR APPROVAL IS GRANTED BY THE OWNER.

**EROSION CONTROL PRACTICES, PROCEDURES, & MAINTENANCE STANDARDS**

THE OPERATOR IS RESPONSIBLE FOR THE INSTALLATION, OPERATION, AND CONTINUED MAINTENANCE OF ALL TEMPORARY AND PERMANENT WATER QUALITY MANAGEMENT BMP'S, AS WELL AS ALL EROSION PREVENTION AND SEDIMENT CONTROL BMP'S, FOR THE DURATION OF THE CONSTRUCTION WORK AT TH SITE, UNTIL FINAL STABILIZATION IS ACHIEVED. ALL BMP'S MUST BE ADEQUATELY LOCATED, DESIGNED, INSTALLED, AND MAINTAINED TO PREVENT EROSION FROM A MINIMUM 0.5 INCH TOTAL RAINFALL EVENT WITHIN 24 HOURS.

ALL NONFUNCTIONAL BMP'S MUST BE REPAIRED, REPLACED, OR SUPPLEMENTED WITH FUNCTIONAL BMP'S BY THE END OF THE NEXT BUSINESS DAY AFTER DISCOVERY, OR AS SOON AS FIELD CONDITIONS ALLOW ACCESS UNLESS ANOTHER TIME FRAME IS SPECIFIED IN THE SWPPP. ALL ERODED MATERIAL THAT LEAVES THE SITE SHALL BE COLLECTED BY THE OPERATOR AND RETURNED TO THE SITE AT THE OPERATOR'S EXPENSE AND INCIDENTAL TO THE PROJECT COST.

TEMPORARY OR PERMANENT STABILIZATION SHALL BE INITIATED AS SOON AS POSSIBLE, BUT NO LATER THAN THE END OF THE NEXT WORK DAY FOLLOWING THE DAY EARTH-DISTURBING ACTIVITIES IN THAT PORTION OF THE SITE HAS TEMPORARILY OR PERMANENTLY CEASED. ALL EXPOSED SOIL AREAS SHALL BE STABILIZED WITHIN 14 DAYS AFTER THE CONSTRUCTION ACTIVITY IN THAT PORTION OF THE SITE HAS TEMPORARILY OR PERMANENTLY CEASED. INITIATED STABILIZATION IS DEFINED AS COMPLETING ONE (OR MORE) OF THE FOLLOWING: SOIL PREPARATION FOR VEGETATION, MULCHING (OR OTHER TEMPORARY NONVEGETATIVE BMP), SEEDING/PLANTING, OR SCHEDULING STABILIZATION MEASURES TO BE FULLY INSTALLED AND COMPLETED WITHIN THE 14 DAY TIMEFRAME.

ALL EXPOSED SOILS WITHIN 200 FEET AND DRAINING TO A DNR PUBLIC WATERS MUST BE STABILIZED WITHIN 24 HOURS OF TEMPORARILY OR PERMANENTLY CEASING WORK, DURING THE FISH SPAWNING PERIOD. TEMPORARY STOCKPILES WITHOUT SIGNIFICANT SILT, CLAY OR ORGANIC COMPONENTS (E. G., CLEAN AGGREGATE STOCKPILES, DEMOLITION CONCRETE STOCKPILES, SAND STOCKPILES) AND THE CONSTRUCTED BASE COMPONENTS OF ROADS, PARKING LOTS AND SIMILAR SURFACES ARE EXEMPT FROM THIS REQUIREMENT, BUT MUST BE IN COMPLIANCE WITH PART IV.C.5.

TEMPORARY STABILIZATION BMP'S SHALL ONLY BE IMPLEMENTED WHEN PERMANENT STABILIZATION BMP'S CANNOT BE IMPLEMENTED WITHIN THE 14 DAY TIMEFRAME FOR EXPOSED SOILS.

TEMPORARY/PERMANENT DRAINAGE DITCHES & SWALES: THE NORMAL WETTED PERIMETER (2-YEAR, 24-HOUR PRECIPITATION EVENT) OF ANY TEMPORARY OR PERMANENT DRAINAGE DITCH, CHANNEL, OR SWALE THAT DRAINS WATER FROM ANY PORTION OF THE CONSTRUCTION SITE, OR DIVERTS WATER AROUND THE SITE, MUST BE STABILIZED WITHIN THE LAST 200 LINEAL FEET FROM THE PROPERTY EDGE, OR FROM THE POINT OF DISCHARGE INTO ANY SURFACE WATER WITHIN 24 HOURS OF CONNECTION. STABILIZATION REMAINING OF THE REMAINING PORTIONS OF THE CHANNEL MUST BE STABILIZED WITHIN 14 DAYS. ALL STORMWATER CONVEYANCE CHANNELS MUST USE EROSION CONTROL AND VELOCITY DISSIPATION DEVICES WITHIN AND ALONG THE LENGTH OF THE CHANNEL AND AT ANY OUTLETS. TEMPORARY OR PERMANENT DITCHES OR SWALES THAT ARE BEING USED AS A TEMPORARY SEDIMENT CONTAINMENT SYSTEM (WITH PROPERLY DESIGNED ROCK DITCH CHECKS, BOLL ROLLS, SILT DIKES ETC.) DO NOT NEED TO BE STABILIZED. THESE AREAS MUST BE STABILIZED WITHIN 24 HOURS AFTER NO LONGER BEING USED AS A SEDIMENT CONTAINMENT SYSTEM. MULCH, HYDROMULCH, TACKIFIER, OR POLYARCRYLAMIDE BELOW THE WETTED PERIMETER OF A DITCH, SWALE, OR OTHER SURFACE WATER CONVEYANCE IS NOT ACCEPTABLE STABILIZATION.

EROSION CONTROL BLANKETS/MATS: OPERATOR SHALL VERIFY DURING REGULAR INSPECTIONS THAT NO GULLIES, RILLS, OR SCOUR HOLES HAVE FORMED UNDER EROSION CONTROL BLANKETS AND MATS. ALL REPAIRS MUST BE COMPLETED WITHIN 24 HOURS OF DISCOVERY, OR AS SOON AS FIELD CONDITIONS ALLOW ACCESS.

MULCH: OPERATOR MUST APPLY MULCH IN A UNIFORM PATTERN OVER THE DISTURBED SOILS, TO ACHIEVE A MINIMUM OF 90% GROUND COVER.

DUST CONTROL: DUST FROM THE SITE WILL BE CONTROLLED BY INCREASED STREET SWEEPING AND/OR USING A MOBILE PRESSURE-TYPE DISTRIBUTOR TRUCK TO APPLY POTABLE WATER TO DISTURBED AREAS. THE MOBILE UNIT WILL APPLY WATER AT A RATE NECESSARY TO PREVENT RUNOFF AND PONDING.

STORM SEWER OUTLETS: PIPE OUTLETS MUST HAVE TEMPORARY OR PERMANENT ENERGY DISSIPATION WITHIN 24 HOURS AFTER HYDRAULIC CONNECTION TO A RECEIVING SURFACE WATER.

**TEMPORARY & PERMANENT EROSION CONTROL BMP'S**

TYPE 1 MULCH: APPLY TO DISTURBED SLOPES LESS THAN 1:3 WITH BLOWER EQUIPMENT OR CONCURRENTLY WITH HYDROMULCH AT 2 TONS/ACRE. IMMEDIATELY OVERSPRAY (IF NOT HYDROMULCHED) WITH TACKIFIER (PER MANUFACTURER'S RECOMMENDED RATES) OR DISC-ANCHORED.

RAPID STABILIZATION METHOD #3: THIS WORK SHALL CONSIST OF OPERATIONS NECESSARY TO RAPIDLY STABILIZE SMALL CRITICAL AREAS WITHIN 200 FT OF SURFACE WATERS, TO PREVENT OFF-SITE SEDIMENTATION AND OR TO COMPLY WITH PERMIT REQUIREMENTS. INSTALL PER MNDOT SPECIFICATIONS 2575-3N.

RAPID STABILIZATION METHOD #4: (WOOD FIBER, NATURAL NET ONLY) IS AN ACCEPTABLE BMP FOR DISTURBED AREAS ADJACENT TO ENVIRONMENTALLY SENSITIVE AREAS, SURFACE WATERS, AND WITHIN THE LAST 200 FEET OF DITCH BOTTOMS.

TEMPORARY WINTER COVER: AREAS OF EXPOSED SOILS THAT ARE NOT COMPLETED BEFORE THE WINTER WILL BE STABILIZED WITH TYPE #3 (CERTIFIED AS WEEED FREE) ADJACENT TO WETLAND OR STORMWATER PONDS. ALL OTHER DISTURBED AREAS SHALL BE STABILIZED WITH TYPE #1 MULCH, UNLESS ALTERNATIVE MORE PROTECTIVE BMP'S ARE SPECIFIC WITHIN THE SWPPP. ALL EXPOSED SOILS SHALL BE STABILIZED BEFORE CONSTRUCTION IS COMPLETED FOR THE SEASON.

HYDRO-MULCH TYPE #5: HYDRAULIC SOIL STABILIZER IN COMBINATION WITH A TACKIFIER WILL BE INSTALLED PER MANUFACTURER'S SPECIFICATIONS TO EXPOSED SOILS AREAS TO PROVIDE TEMPORARY LONG-TERM OR PERMANENT COVER FOR VEGETATION ESTABLISHMENT.

**SEDIMENT CONTROL PRACTICES, PROCEDURES, & MAINTENANCE STANDARDS**

DOWN GRADIENT SYSTEMS: IF THE DOWN GRADIENT TREATMENT SYSTEM IS OVERLOADED, ADDITIONAL UP GRADIENT SEDIMENT CONTROL PRACTICES OR REDUNDANT BMP'S MUST BE INSTALLED TO ELIMINATE THE OVERLOADING, AND THE SWPPP MUST BE AMENDED TO IDENTIFY THESE ADDITIONAL PRACTICES.

PERIMETER CONTROL BMP'S (SILT FENCES, CHIP/SLASH MULCH SACKS, BIOROLLS, FLOATING SILT CURTAIN, ETC.): PERIMETER CONTROL BMP'S SHALL BE INSTALLED ON ALL DOWN GRADIENT PERIMETERS AND UPGRADIENT OF ANY BUFFER AREAS, PRIOR TO INITIATING UPGRADIENT LAND DISTURBANCE ACTIVITIES. UPLAND PERIMETER CONTROL BMP'S SHALL BE PLACED AS CLOSE AS POSSIBLE TO FOLLOW A SINGLE CONTOUR ELEVATION. ALL SILT FENCES MUST BE REPAIRED, REPLACED, OR MAINTAINED WHEN THEY BECOME NONFUNCTIONAL OR THE SEDIMENT REACHES 1/2 OF THE HEIGHT OF THE FENCE. ALL REPAIRS MUST BE COMPLETED BY THE END OF THE NEXT BUSINESS DAY AFTER DISCOVERY, OR AS SOON AS FIELD CONDITIONS ALLOW ACCESS. FLOATING SILT CURTAIN SHALL BE INSTALLED AS CLOSE TO THE SHORELINE AS POSSIBLE FOR SHORELAND/IN-WATER SHORT-TERM CONSTRUCTION ACTIVITIES. AFTER THE SHORT-TERM ACTIVITY IS COMPLETE, AN UPLAND PERIMETER CONTROL MUST BE INSTALLED IF EXPOSED SOILS CONTINUE TO DRAIN TO THE SURFACE WATER.

**TEMPORARY & PERMANENT SEDIMENT CONTROL BMP'S**

SECONDARY SILT FENCE 880 LF
SILT FENCE 875 LF
INLET PROTECTION AT ALL INLETS (1 EACH)
CONSTRUCTION ENTRANCE
CONCRETE TRUCK WASHOUT AREA

50 FOOT NATURAL BUFFER (S): REFER TO "CONSTRUCTION PHASING/STAGING, BUFFERS, & AREAS NOT TO BE DISTURBED" SECTION OF THIS SWPPP.

TEMPORARY SEDIMENTATION BASINS: WHERE TEN (10) OR MORE ACRES OF DISTURBED SOIL DRAIN TO A COMMON LOCATION, A TEMPORARY SEDIMENT BASIN MUST BE PROVIDED PRIOR TO RUNOFF LEAVING THE CONSTRUCTION SITE OR ENTERING SURFACE WATERS. ALL TEMPORARY BASINS SHALL BE CONSTRUCTED AND OPERATIONAL PRIOR TO GRADING TEN (10) OR MORE ACRES. BASINS MUST PROVIDE A LIVE STORAGE VOLUME FROM A TWO YEAR 24-HOUR STORM EVENT FROM EACH ACRE (DISTURBED AND UNDISTURBED) DRAINING TO THE BASIN. AT A MINIMUM, IF CALCULATIONS ARE NOT PERFORMED THE BASIN SHALL PROVIDE 3,600 CUBIC FEET OF LIVE STORAGE FROM EACH ACRE. THE BASIN INTAKE MUST BE DESIGNED TO WITHDRAW WATER FROM THE SURFACE, PREVENT SHORT CIRCUITING AND THE DISCHARGE OF FLOATING DEBRIS, INCLUDE AN EMERGENCY OVERTFLOW ABOVE THE LIVE STORAGE ELEVATION, AND PROVIDE ENERGY DISSIPATION AT THE BASIN OUTLET. BASINS MUST BE DRAINED AND SEDIMENT REMOVED WHEN THE DEPTH OF COLLECTED SEDIMENT IN THE BASIN REACHES 1/2 THE LIVE STORAGE VOLUME. DRAINAGE AND REMOVAL MUST BE COMPLETED WITHIN 72 HOURS OF DISCOVERY, OR AS SOON AS FIELD CONDITIONS ALLOW ACCESS. IF A BASIN IS INFEASIBLE WITHIN THE PROJECT LIMITS, EQUIVALENT SEDIMENT CONTROL BMP'S MUST BE IMPLEMENTED AND DOCUMENTED IN THE SWPPP OR SWPPP AMENDMENT.

SEDIMENT TRAPS: WHERE A TEMPORARY SEDIMENT BASIN MEETING THE REQUIREMENTS OF THIS PART IS INFEASIBLE, EQUIVALENT SEDIMENT CONTROLS SUCH AS SMALLER SEDIMENT BASINS, AND/OR SEDIMENT TRAPS, SILT FENCES, VEGETATIVE BUFFER STRIPS, OR ANY APPROPRIATE COMBINATION OF MEASURES ARE REQUIRED FOR ALL DOWN-SLOPE BOUNDARIES OF THE CONSTRUCTION AREA AND FOR SIDE-SLOPE BOUNDARIES AS DICTATED BY INDIVIDUAL SITE CONDITIONS. IN DETERMINING WHETHER INSTALLING A SEDIMENT BASIN IS INFEASIBLE, THE PERMITTEE(S) MUST CONSIDER PUBLIC SAFETY AND MAY CONSIDER FACTORS SUCH AS SITE SOILS, SLOPE, AND AVAILABLE AREA ON SITE. THIS DETERMINATION OF INFEASIBILITY MUST BE DOCUMENTED IN THE SWPPP PER PART III.A.5.m.

TEMPORARY STOCKPILES: ALL STOCKPILES MUST HAVE SILT FENCE OR EQUIVALENT PERIMETER SEDIMENT CONTROLS IMPLEMENTED AND MAINTAINED AT ALL TIMES. PILES CANNOT BE PLACED IN BUFFER AREAS OR SURFACE WATERS, INCLUDING STORMWATER CONVEYANCES SUCH AS CURB AND GUTTER SYSTEMS, OR CONDUITS AND DITCHES UNLESS THERE IS A BYPASS IN PLACE TO PREVENT STORMWATER RUN-ON INTO THE STOCKPILE.

CONSTRUCTION SITE ENTRANCE/VEHICLE TRACKING: OPERATOR MUST MINIMIZE SEDIMENT FROM LEAVING THE CONSTRUCTION SITE (OR ONTO STREETS WITH THE SITE) BY IMPLEMENTING BMP'S SUCH AS ROCK PADS, SLASH MULCH, CONCRETE OR STEEL WASH RACKS, OR EQUIVALENT SYSTEMS. STREET SWEEPING MUST BE USED DAILY DURING CONSTRUCTION OPERATIONS IF SUCH BMP'S ARE NOT ADEQUATE TO PREVENT SEDIMENT FROM BEING TRACKED ONTO THE STREET. TRACKED SEDIMENT MUST BE REMOVED FROM ALL PAVED SURFACES (ON AND OFF-SITE) WITHIN 24 HOURS OF DISCOVERY, OR SOONER AS DIRECTED BY THE PROJECT OWNER. MULTIPLE STREET SWEEPINGS AT THE OPERATOR'S EXPENSE MAY BE REQUIRED ON ALL ENTRY/EXIT POINTS TO THE SITE AT THE DISCRETION OF THE PROJECT OWNER.

SURFACE WATERS: INCLUDING OFF-SITE AND DOWNSTREAM DRAINAGE DITCHES, CATCH BASINS, AND CONVEYANCE SYSTEMS, MUST BE INSPECTED FOR EVIDENCE OF EROSION AND SEDIMENT DEPOSITION. THE REMOVAL AND STABILIZATION OF EXPOSED SOILS MUST TAKE PLACE WITHIN SEVEN (7) DAYS OF DISCOVERY UNLESS PRECLUDED BY LEGAL, REGULATORY, OR PHYSICAL ACCESS CONSTRAINTS. IF PRECLUDED, REMOVAL AND STABILIZATION MUST TAKE PLACE WITHIN SEVEN (7) CALENDAR DAYS OF OBTAINING ACCESS. THE PERMITTEES ARE RESPONSIBLE FOR CONTACTING ALL LOCAL, REGIONAL, STATE AND FEDERAL AGENCIES AND RECEIVING ANY APPLICABLE PERMITS, PRIOR TO CONDUCTING ANY WORK.

INLET PROTECTION: ALL STORM DRAIN INLETS (INCLUDING DOWN GRADIENT, OFF-SITE) MUST BE PROTECTED BY APPROPRIATE BMP'S DURING CONSTRUCTION UNTIL ALL SOURCES WITH POTENTIAL FOR DISCHARGING TO THE INLET HAVE BEEN STABILIZED. SILT FENCE IS NOT AN ACCEPTABLE CATCH BASIN INLET PROTECTION BMP. CONTRACTOR SHALL CLEAN, REMOVE AND DISPOSE OF SEDIMENT, AND/OR REPLACE STORM DRAIN INLET PROTECTION ON A ROUTINE BASIS TO ENSURE THE DEVICE IS FULLY FUNCTIONAL PRIOR TO THE NEXT FORECASTED PRECIPITATION EVENT (30% OR GREATER) INLET PROTECTION MAY BE REMOVED FOR A PARTICULAR INLET IF A SPECIFIC SAFETY CONCERN (STREET FLOODING/FREEZING) HAS BEEN IDENTIFIED AND THE PERMITTEE(S) HAVE RECEIVED WRITTEN CORRESPONDENCE FROM THE JURISDICTIONAL AUTHORITY (E.G. CITY/COUNTY/TOWNSHIP/MNDOT ENGINEER) VERIFYING THE NEED FOR REMOVAL. WRITTEN CORRESPONDENCE MUST BE DOCUMENTED IN THE SWPPP AND AVAILABLE WITHIN 72 HOURS UPON REQUEST. PERMISSION TO REMOVE INLET PROTECTION BASED ON A SPECIFIC SAFETY CONCERN MUST STILL BE OBTAINED FROM THE LOCAL JURISDICTIONAL AUTHORITY WITHIN 30 DAYS OF REMOVAL.

CHEMICAL TREATMENTS: OPERATOR MUST AMEND THE SWPPP TO INCLUDE THE INTENDED USES AND LOCATIONS OF FLOCCULANTS, POLYMERS, AND OTHER SEDIMENTATION TREATMENT CHEMICALS. CHEMICAL TREATMENTS MAY ONLY BE APPLIED IN AREAS WHERE TREATED STORMWATER IS DIRECTED TO A RECEIVING SEDIMENT CONTROL SYSTEM (NOT DIRECTLY DISCHARGED TO NATURAL WATER BODIES). THIS INCLUDES DOCUMENTING THE EXPECTED SOIL TYPES, MANUFACTURER'S RECOMMENDED DOSING, APPLICATION RATES/QUANTITIES, AND MONITORING RESULTS (TURBIDITY, PH).

**DEWATERING, STREAM DIVERSION, AND BASIN DRAINING**

DEWATERING, STREAM DIVERSION, OR BASIN DRAINING IS ANTICIPATED DURING CONSTRUCTION OF THIS PROJECT. DITCH REALIGNMENT, CULVERT CONSTRUCTION, AND NEW POND GRADING WILL REQUIRE SITE DEWATERING. WHEN DEWATERING OR BASIN DRAINING IS REQUIRED, THE CONTRACTOR SHALL SUBMIT A DEWATERING PLAN AND NARRATIVE TO THE PROJECT ENGINEER FOR APPROVAL PRIOR TO UNDERTAKING THESE ACTIVITIES. DEWATERING PLAN MUST INCLUDE BMP'S TO PREVENT SEDIMENT TRANSPORT, EROSION, AND ADVERSE IMPACTS TO DOWNSTREAM RECEIVING WATERS. THE DEWATERING PLAN MUST ALSO INCLUDE ANY SPECIFIC CHEMICAL TREATMENTS (FLOC, POLYMERS, ETC.) THAT WILL BE USED. IF AN APPROVED TMDL WASTE LOAD ALLOCATION IS ESTABLISHED FOR CONSTRUCTION ACTIVITIES ON A RECEIVING WATERBODY, THE OPERATOR MUST IMPLEMENT ALL NECESSARY BMP'S TO MEET THE ASSIGNED WLA. THE DEWATERING PLAN AND DNR APPROPRIATIONS PERMIT WILL BECOME PART OF THE SWPPP. WATER THAT IS TURBID OR HAS SEDIMENT MUST BE DISCHARGED TO A TEMPORARY OR PERMANENT SEDIMENTATION BASIN (AND/OR OTHER APPROPRIATE BMP'S) ON THE PROJECT SITE WHENEVER POSSIBLE. DISCHARGE FROM THE TEMPORARY OR PERMANENT SEDIMENTATION BASIN MUST BE VISUALLY CHECKED TO ENSURE ADEQUATE TREATMENT IS OBTAINED IN THE BASIN AND THAT NUISANCE CONDITIONS (SEE MINN. R. 7050.0210, SUBP. 2), IMPACTS TO WETLANDS, AND EROSION IN RECEIVING CHANNELS OR ON DOWNSLOPE PROPERTIES WILL NOT RESULT FROM THE DISCHARGE. THE DISCHARGE MUST BE DISPERSED OVER NATURAL ROCK RIPRAP, SAND BAGS, PLASTIC SHEETING, OR OTHER ACCEPTED ENERGY DISSIPATION MEASURES. ADEQUATE SEDIMENTATION CONTROL MEASURES AND ADDITIONAL FILTRATION BMP'S ARE REQUIRED FOR DISCHARGE WATER THAT CONTAINS SUSPENDED SOLIDS, OIL, OR GREASE.

**FINAL STABILIZATION**

FINAL STABILIZATION IS ACHIEVED WHEN THE FOLLOWING FOUR PARAMETERS ARE COMPLETED, PRIOR TO SUBMISSION OF THE NOTICE OF TERMINATION TO MPCA. SEE PERMANENT EROSION CONTROL PRACTICES FOR SPECIFIC METHODS AND APPLICATIONS.

- 1. 70% VEGETATIVE COVER: ALL SOIL DISTURBING ACTIVITIES AT THE SITE HAVE BEEN COMPLETED AND ALL EXPOSED SOILS ARE STABILIZED BY A UNIFORM, LIVE PERENNIAL VEGETATIVE COVER WITH A DENSITY OF 70% OVER THE ENTIRE PERVIOUS SURFACE AREA, OR OTHER EQUIVALENT MEANS NECESSARY TO PREVENT SOIL FAILURE UNDER EROSION CONDITIONS. REFER TO PART IV.G.5.F THE PROJECT IS ON AGRICULTURAL LAND.
2. FINAL CLEAN OUT OF PERMANENT STORMWATER MANAGEMENT SYSTEMS & CONVEYANCE SYSTEMS: ALL SEDIMENT MUST BE REMOVED FROM PERMANENT STORMWATER MANAGEMENT SYSTEMS, CONVEYANCE SYSTEMS, AND DITCHES MUST BE STABILIZED WITH PERMANENT COVER.
3. REMOVAL OF ALL TEMPORARY SYNTHETIC BMP'S: ALL TEMPORARY SYNTHETIC AND STRUCTURAL EROSION PREVENTION AND SEDIMENT CONTROL BMP'S (SUCH AS SILT FENCE) MUST BE REMOVED ON THE PORTIONS OF THE SITE FOR WHICH THE PERMITTEE IS RESPONSIBLE. BMP'S DESIGNED TO DECOMPOSE ON SITE (SUCH AS SOME COMPOST LOGS) MAY BE LEFT IN PLACE.
4. OPERATOR PROVIDES THE OWNER ALL INSPECTION AND SWPPP AMENDMENT RECORDS FOR THE PROJECT: OWNER IS RESPONSIBLE FOR KEEPING ALL RECORDS (AS DEFINED IN PART II.E.1-5) ON FILE FOR THREE YEARS AFTER SUBMITTAL OF THE NOTICE OF TERMINATION.

Table with columns: DATE, REVISIONS, CITY COMMENTS, BY, BR. Includes a REVISIONS table with columns: NO., DATE, DESCRIPTION.

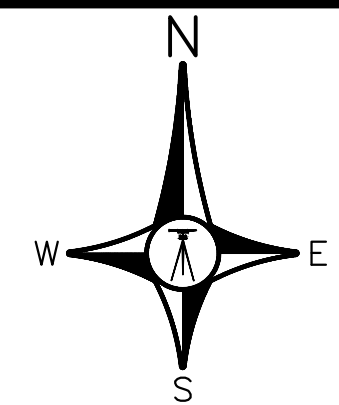
ROSHELL ENGINEERING, LLC
6192 267 TH CT WYOMING, MN 55092
PHONE: 763.286.0521

SILVER OAKS 2ND ADDITION
SWPPP
RAMSEY, MINNESOTA

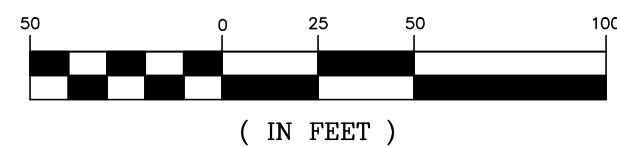
DATE 5/2/17
SCALE 1"=50'
PROJECT
CHECKED BTR
APPROVED BTR

DATE 5/4/17
REC. NO. 24019
Brent Roszell
Brent Roszell

C5



GRAPHIC SCALE

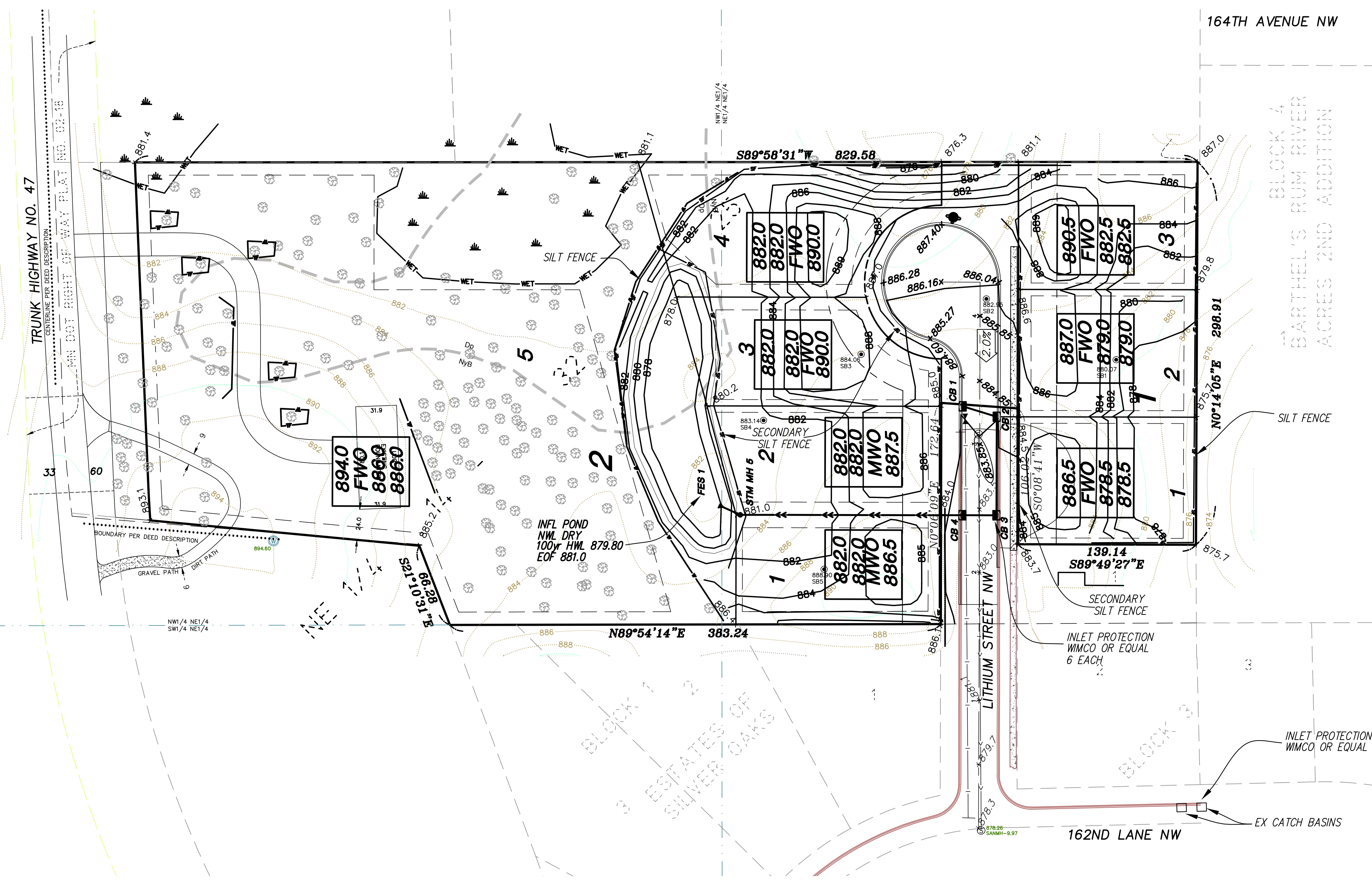


( IN FEET )

| LINE TYPE & SYMBOL LEGEND |                     |
|---------------------------|---------------------|
|                           | FLARED END SECTION  |
|                           | STORM SEWER         |
|                           | DENOTES SOIL BORING |
|                           | TREE REMOVED        |
|                           | TREE SAVED          |
|                           | WETLAND             |
|                           | TREE FENCE          |
|                           | SILT FENCE          |
|                           | PROPOSED CONTOUR    |
|                           | EXIST CONTOUR       |
|                           | SETBACK             |
|                           | EASEMENT            |
|                           | LOT LINE            |
|                           | R/W                 |
|                           | EDGE OF BITUMINOUS  |
|                           | CENTERLINE          |

| BUILDING PAD LEGEND |                          |
|---------------------|--------------------------|
| 909.0               | GARAGE FLOOR ELEVATION   |
| FWO/MWO             | TYPE OF BUILDING         |
| 901.5               | LOWEST FLOOR ELEVATION   |
| 909.0               | LOWEST OPENING ELEVATION |

| BUILDING TYPE LEGEND |  |
|----------------------|--|
| F                    | FULL BASEMENT  |
| FWO                  | FULL BASEMENT WALKOUT  |
| MWO                  | MODIFIED (NON STANDARD) WALKOUT BASEMENT<br>VARIABLE 5 -12 COURSE BASEMENT AND/OR<br>EXTRA STEPS IN GARAGE |



TREE PROTECTION FENCE SHALL BE INSTALLED AND THE LOCATION APPROVED BY THE CITY BEFORE COMMENCEMENT OF OTHER WORK, INCLUDING SILT FENCE INSTALLATION.

AN ARBORIST SHALL BE CONSULTED TO DEVELOP A PLAN TO PROTECT EXISTING OAK TREES FROM OAK WILT.

ANY CLEARING OF OAK TREES SHALL BE PERFORMED PRIOR TO APRIL 15TH OR AFTER JULY 15TH TO MINIMIZE EXPOSURE OR INTRODUCTION OF OAK WILT.

**POND NOTES**  
INFILTRATION PONDS SHALL BE EXCAVATED BY USE OF BACKHOE WITH A TOOTHED BUCKET.  
BOTTOM OF POND SHALL NOT BE COMPACTED  
NO TOPSOIL TO BE PLACED IN PONDS  
PONDS TO BE SEED WITH MnDOT SEED MIX 33-262 (44 lb/ac)  
PLACE SILT FENCE (SECONDARY) IMMEDIATELY AFTER GRADING COMPLETION. THIS FENCING TO REMAIN IN PLACE UNTIL VEGETATION IS ESTABLISHED IN THE PONDS.  
ACCESS TO PONDS VIA EASEMENTS ABUTTING PUBLIC ROADS

NOTE: STREETS TO BE SWEEP DAILY OR AS DIRECTED BY THE CITY ENGINEER.

NOTE: NO ACTIVITY, OTHER THAN THE CONSTRUCTION OF, SHALL BE ALLOWED IN INFILTRATION POND AREAS.

NOTE: TREES TO REMAIN SHALL BE PROTECTED FROM CONSTRUCTION ACTIVITY BY MEANS OF FENCING OR OTHER APPROVED METHOD. TREE FENCING TO BE PLACED BY HAND AND PRIOR TO SILT FENCE PLACEMENT.

| DATE    | REVISIONS          | BY |
|---------|--------------------|----|
| 5/21/17 | CITY COMMENTS 5/26 | BR |

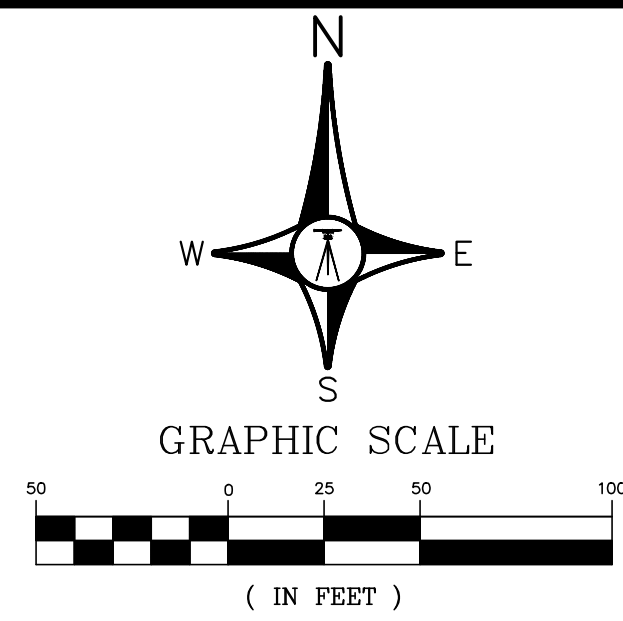
**ROSHELL ENGINEERING, LLC**  
6192 267 TH CT WYOMING, MN 55092  
PHONE: 763.286.0521

**SILVER OAKS 2ND ADDITION**  
GRADING & EROSION CONTROL PLAN  
RAMSEY, MINNESOTA

I HEREBY CERTIFY THAT THIS PLAN, SPECIFICATION OR REPORT WAS PREPARED BY ME OR UNDER MY CLOSE PERSONAL SUPERVISION AND THAT I AM A LICENSED PROFESSIONAL ENGINEER UNDER THE LAWS OF THE STATE OF MINNESOTA.  
DATE: 5/4/2017 REG. NO. 24619  
*Brent Roshell*  
BRENT ROSHELL

| DATE   | SCALE    | PROJECT | CHECKED | APPROVED |
|--------|----------|---------|---------|----------|
| 5/2/17 | AS SHOWN | REI-17  | BTR     | BTR      |

**G1**



THE PLANTING DEPTH OF EACH TREE WILL BE INSPECTED. ANY TREE PLANTED TOO DEEPLY OR WITH 1ST PRIMARY ROOTS BURIED WILL BE REJECTED.

1. ALL TREES TO BE PREMIUM QUALITY, NO "PARK GRADE" TREES ARE PERMITTED.
2. AFTER INSTALLATION, TRIM OUT DEADWOOD AND/OR DEFORMED TWIGS. DO NOT CUT LEADER.
3. AMENDED SOIL SHALL CONTAIN 5% ORGANIC MATTER BY VOLUME.
4. DIAMETER OF HOLE SHALL BE 1-2" LARGER THAN THE DIAMETER OF THE ROOTBALL OR ROOT MASS.
5. ORGANIC MATTER SHALL NOT BE BANKED AGAINST THE STEM OR TRUNK OF THE TREE.
6. TREE SHALL NOT BE STAKED UNLESS IT IS ABSOLUTELY NECESSARY TO DO SO.
7. ALL TAGS, BANDS, AND WIRES SHALL BE REMOVED FROM THE TREE IMMEDIATELY AFTER PLANTING.
8. THE TREE SHALL BE WATERED AS NECESSARY TO PREVENT WILTING AND PROMOTE GROWTH.
9. A PHOTO DEGRADABLE TREE TUBE OR EQUIVALENT SHALL BE INSTALLED AROUND ALL NEWLY PLANTED TREES.
10. PULL BURLAP AWAY FROM TREE STEM.
11. STAKES AND GUY WIRES MANDATORY ONLY FOR B&B TREES WITH 4" CALIPER OR GREATER, ALL WIND PRONE SITES AND ALL BARE ROOT TREES.
12. COORDINATE STAKING TO INSURE UNIFORM ORIENTATION OF GUY WIRES AND STAKES, IF NECESSARY.
13. REMOVE SOIL FROM TOP OF ROOT BALL TO EXPOSE TOP OF 1ST SET OF PRIMARY ROOTS. 1ST SET OF PRIMARY ROOTS ARE AT FINISHED GRADE.
14. AFTER SETTING ROOT BALL IN PIT, BACKFILL TO WITHIN 12" OF TOP OF ROOT BALL, AND WATER IN. CUT AND REMOVE TO BACKFILL LINE ALL TWINE AND/OR BURLAP. BACK FILL UNTIL PIT IS FULL, WATER AGAIN. PULL EXCESSIVE SOIL OFF THE TOP OF BRANCH ROOT SYSTEM. IF SOIL IN ROOT BALL IS THE CONSISTENCY OF OATMEAL DUE TO EXCESSIVE HANDLING, CONTRACTOR SHALL STAKE THE TREE.
15. SHREDDED HARDWOOD MULCH - 1-4" DEPTH, 5" DIAMETER. PULL AWAY FROM TRUNK OF TREE.
16. BACKFILL WITH 1/2 NATIVE SOILS AND 1/2 PLANTING SOIL. MIX THOROUGHLY. SEE SPEC.
17. GUY ASSEMBLY: 16" POLYPROPYLENE OR POLYETHYLENE(40 MIL) 1 1/2 WIDE STRIP - (TYP) DOUBLE STRAND 14 GA WIRE & 3 STEEL STAKES OR SIGN POSTS@ 120 DEGREE O.C.
18. GUY ASSEMBLY OPTIONAL BUT CONTRACTOR ASSUMES FULL RESPONSIBILITY FOR MAINTAINING TREE IN A PLUMB POSITION FOR THE DURATION OF THE GUARANTEE PERIOD.

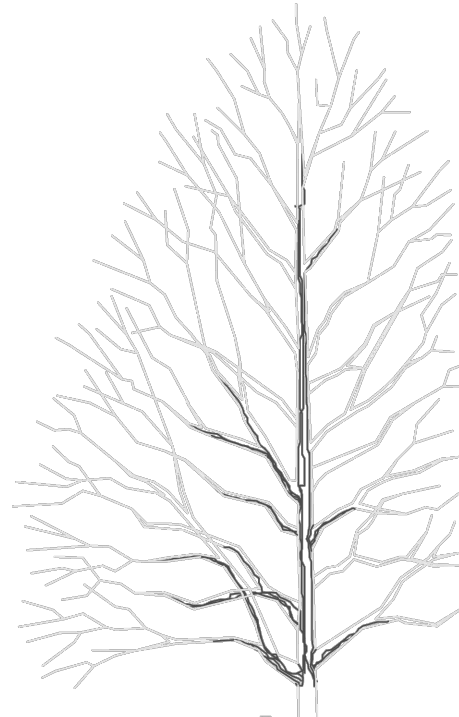
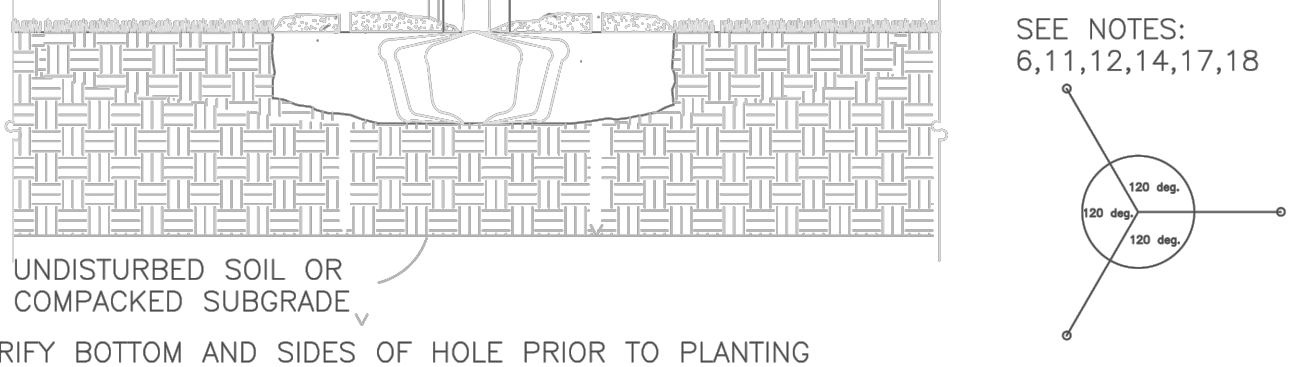
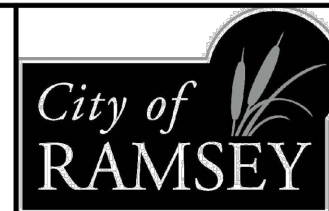


PHOTO DEGRADABLE TREE TUBE STURDY STAKE



SEE NOTES: 6,11,12,14,17,18

APPROVED: 5 - 1997



STANDARD DETAILS: TREE PLANTING  
CITY PLATE No. PARK-2

**PROPOSED CONIFEROUS TREES /QTY**

DENOTES BLACK HILLS SPRUCE (*PICEA GLAUCA DENSATA*) 4 EACH

**PROPOSED DECIDUOUS TREES /QTY**

DENOTES WHITE OAK (*QUERCUS ALBA*) 6 EACH

DENOTES AUTUMN BLAZE MAPLE (*ACER FREEMANII*) 6 EACH

**PLANTING REQUIREMENTS**

TREES:  
OVERSTORY DECIDUOUS TREES 1" DIAMETER MEASURED 6' FROM THE BASE AT PLANTING

CONIFEROUS TREES MUST HAVE A MINIMUM HEIGHT OF 6 FEET

- MINIMUM 25% DECIDUOUS AND CONIFEROUS

| LINE TYPE & SYMBOL LEGEND |                               |
|---------------------------|-------------------------------|
|                           | FLARED END SECTION            |
|                           | STORM SEWER                   |
|                           | DENOTES SOIL BORING           |
|                           | TREE REMOVED                  |
|                           | TREE SAVED                    |
|                           | WETLAND                       |
|                           | TREE FENCE                    |
|                           | SILT FENCE                    |
|                           | PROPOSED CONTOUR              |
|                           | EXIST CONTOUR                 |
|                           | SETBACK                       |
|                           | EASEMENT                      |
|                           | LOT LINE                      |
|                           | R/W                           |
|                           | EDGE OF BITUMINOUS CENTERLINE |

TREE PROTECTION FENCE SHALL BE INSTALLED AND THE LOCATION APPROVED BY THE CITY BEFORE COMMENCEMENT OF OTHER WORK, INCLUDING SILT FENCE INSTALLATION.

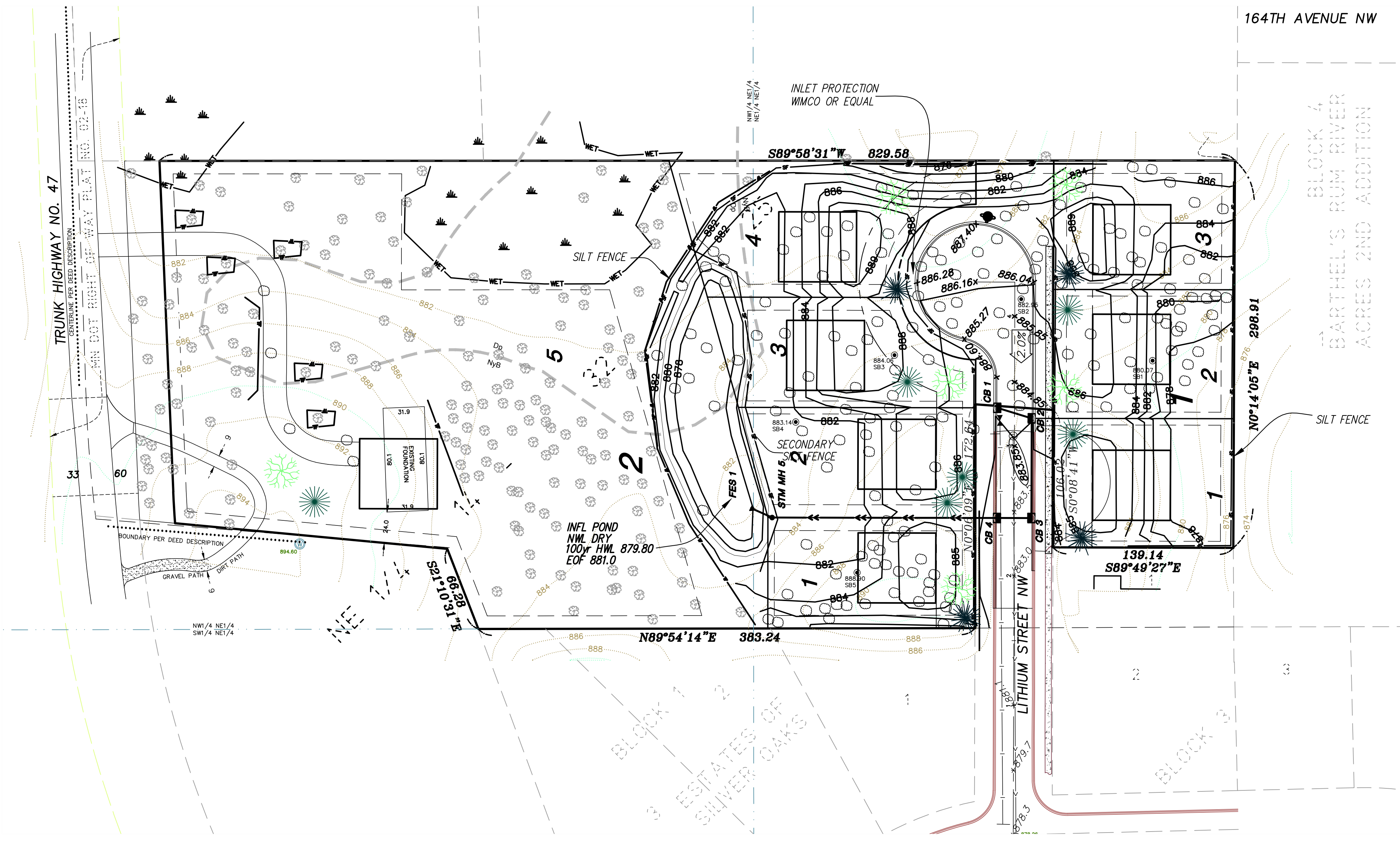
AN ARBORIST SHALL BE CONSULTED TO DEVELOP A PLAN TO PROTECT EXISTING OAK TREES FROM OAK WILT.

ANY CLEARING OF OAK TREES SHALL BE PERFORMED PRIOR TO APRIL 15TH OR AFTER JULY 15TH TO MINIMIZE EXPOSURE OR INTRODUCTION OF OAK WILT.

NOTE: STREETS TO BE SWEEPED DAILY OR AS DIRECTED BY THE CITY ENGINEER.

NOTE: NO ACTIVITY, OTHER THAN THE CONSTRUCTION OF, SHALL BE ALLOWED IN INFILTRATION POND AREAS.

NOTE: TREES TO REMAIN SHALL BE PROTECTED FROM CONSTRUCTION ACTIVITY BY MEANS OF FENCING OR OTHER APPROVED METHOD. TREE FENCING TO BE PLACED BY HAND AND PRIOR TO SILT FENCE PLACEMENT.



| DATE | REVISIONS | BY |
|------|-----------|----|
|      |           |    |
|      |           |    |
|      |           |    |

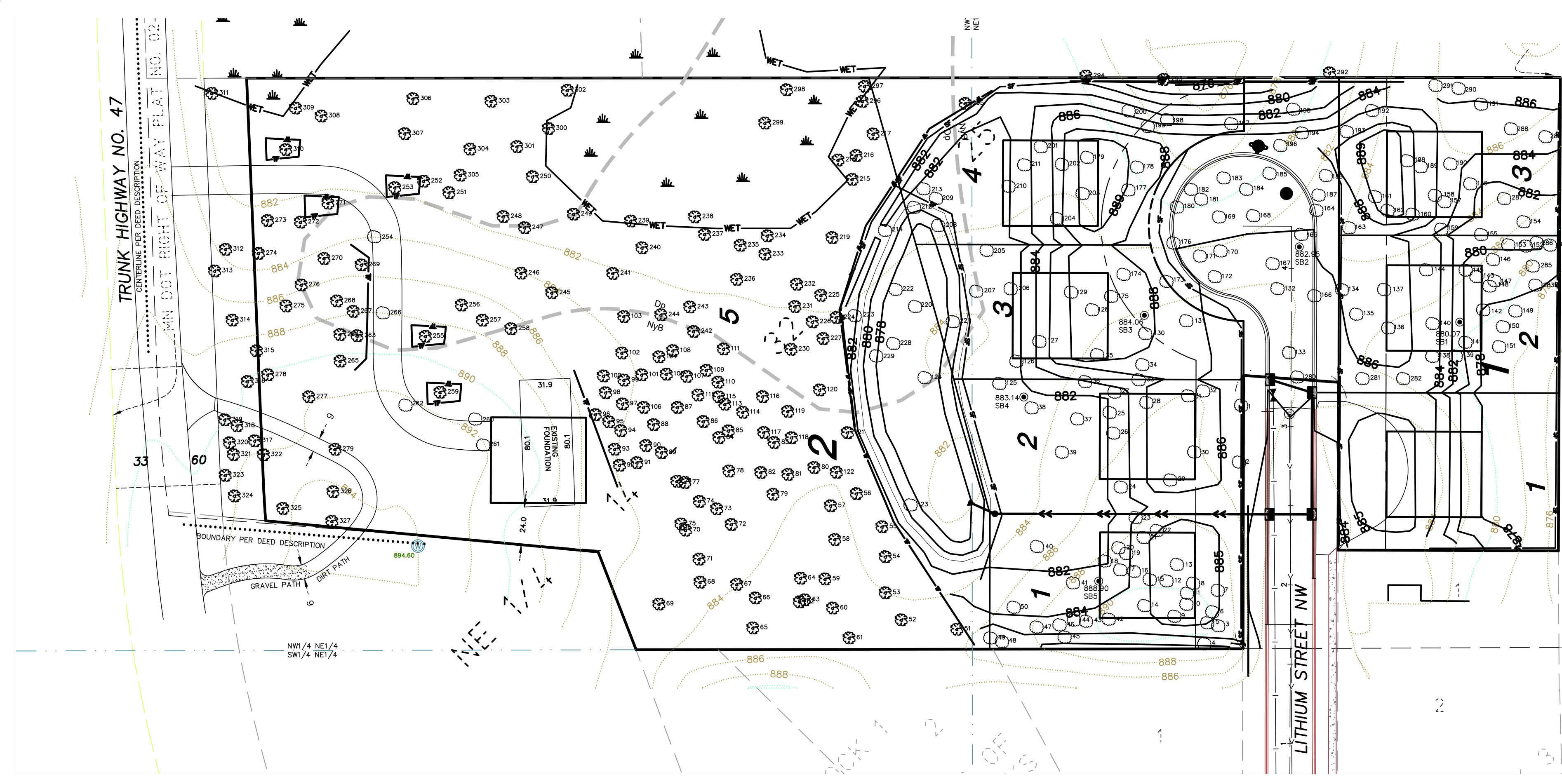
**ROSHELL ENGINEERING, LLC**  
6192 267 TH CT WYOMING, MN 55092  
PHONE: 763.286.0521

**SILVER OAKS 2ND ADDITION**  
LANDSCAPE PLAN  
RAMSEY, MINNESOTA

I HEREBY CERTIFY THAT THIS PLAN, SPECIFICATION OR REPORT WAS PREPARED BY ME OR UNDER MY CLOSE PERSONAL SUPERVISION AND THAT I AM A LICENSED PROFESSIONAL ENGINEER UNDER THE LAWS OF THE STATE OF MINNESOTA.  
DATE: 5/4/2017 REG. NO.: 242019  
*Brent Rosnell*  
BRENT ROSHELL

| DATE   | SCALE    | PROJECT | CHECKED | APPROVED |
|--------|----------|---------|---------|----------|
| 5/2/17 | AS SHOWN | RET-17  |         |          |

**L1**



N  
W E  
S

GRAPHIC SCALE  
( IN FEET )

50 0 25 50 100

**LINE TYPE & SYMBOL LEGEND**

- ◀ FLARED END SECTION
- STORM SEWER
- SB-5 DENOTES SOIL BORING
- ⊙ PROPOSED WELL LOC.
- ~ EXIST TREE LINE
- TF TREE FENCE
- SF SILT FENCE
- PROPOSED CONTOUR
- - - EXIST CONTOUR
- SETBACK
- - - EASEMENT
- LOT LINE
- R/W
- EDGE OF BITUMINOUS
- - - CENTERLINE

NOTE: TREES TO REMAIN SHALL BE PROTECTED FROM CONSTRUCTION ACTIVITY BY MEANS OF FENCING OR OTHER APPROVED METHOD.

TREE PROTECTION FENCE SHALL BE INSTALLED AND THE LOCATION APPROVED BY THE CITY BEFORE COMMENCEMENT OF OTHER WORK, INCLUDING SILT FENCE INSTALLATION.

AN ARBORIST SHALL BE CONSULTED TO DEVELOP A PLAN TO PROTECT EXISTING OAK TREES FROM OAK WLT.

ANY CLEARING OF OAK TREES SHALL BE PERFORMED PRIOR TO APRIL 15TH OR AFTER JULY 15TH TO MINIMIZE EXPOSURE OR INTRODUCTION OF OAK WLT.

**TREES SAVED (166)**

|     |               |    |     |               |    |     |                 |    |     |                 |      |
|-----|---------------|----|-----|---------------|----|-----|-----------------|----|-----|-----------------|------|
| 51  | Ash, Green    | 11 | 102 | Elm, Siberian | 14 | 251 | Elm, American   | 13 | 309 | Ash, Green      | 9    |
| 53  | Elm, Siberian | 10 | 103 | Elm, Siberian | 17 | 252 | Elm, American   | 8  | 310 | Oak, Bur        | 27   |
| 54  | Boxelder      | 9  | 104 | Elm, Siberian | 8  | 253 | Oak, Bur        | 33 | 311 | Aspen           | 9    |
| 55  | Boxelder      | 8  | 105 | Elm, Siberian | 8  | 255 | Boxelder        | 19 | 312 | Oak, Bur        | 28   |
| 56  | Boxelder      | 10 | 106 | Elm, Siberian | 10 | 256 | Ash, Green      | 10 | 313 | Oak, Bur        | 29   |
| 57  | Ash, Green    | 14 | 107 | Elm, Siberian | 10 | 257 | Boxelder        | 12 | 314 | Oak, Red        | 8    |
| 58  | Cherry, Black | 9  | 108 | Elm, Siberian | 9  | 258 | Elm, Siberian   | 18 | 315 | Oak, Red        | 10   |
| 59  | Boxelder      | 13 | 109 | Elm, Siberian | 9  | 259 | Boxelder        | 12 | 316 | Cedar, Red      | 7    |
| 60  | Boxelder      | 14 | 110 | Elm, Siberian | 9  | 263 | Hackberry       | 10 | 317 | Cedar, Red      | 7    |
| 61  | Elm, American | 20 | 111 | Elm, Siberian | 15 | 264 | Elm, Siberian   | 13 | 318 | Cedar, Red      | 6    |
| 62  | Boxelder      | 13 | 112 | Elm, Siberian | 10 | 265 | Ash, Green      | 12 | 319 | Cedar, Red      | 10   |
| 63  | Elm, American | 8  | 113 | Elm, Siberian | 10 | 267 | Elm, Siberian   | 8  | 320 | Cedar, Red      | 8    |
| 64  | Boxelder      | 14 | 114 | Elm, Siberian | 9  | 268 | Elm, Siberian   | 8  | 321 | Cedar, Red      | 9    |
| 65  | Elm, Siberian | 9  | 115 | Elm, Siberian | 8  | 269 | Elm, Siberian   | 12 | 322 | Oak, Bur        | 12   |
| 66  | Elm, American | 9  | 116 | Elm, Siberian | 11 | 270 | Elm, American   | 16 | 323 | Oak, Bur        | 39   |
| 67  | Elm, American | 9  | 117 | Elm, Siberian | 8  | 271 | Elm, Siberian   | 12 | 324 | Oak, Bur        | 15   |
| 68  | Boxelder      | 12 | 118 | Elm, Siberian | 12 | 272 | Elm, Siberian   | 11 | 325 | Oak, Bur        | 25   |
| 69  | Boxelder      | 17 | 119 | Elm, Siberian | 11 | 273 | Oak, Bur        | 32 | 326 | Maple, Silver   | 36   |
| 70  | Elm, American | 9  | 120 | Elm, Siberian | 9  | 274 | Elm, American   | 10 | 327 | Pine, Ponderosa | 13   |
| 71  | Boxelder      | 12 | 121 | Boxelder      | 9  | 275 | Elm, Siberian   | 17 | 165 |                 | 2067 |
| 72  | Elm, Siberian | 9  | 122 | Boxelder      | 10 | 276 | Elm, Siberian   | 9  |     |                 |      |
| 73  | Boxelder      | 8  | 125 | Oak, Red      | 10 | 277 | Pine, Ponderosa | 17 |     |                 |      |
| 74  | Boxelder      | 9  | 126 | Cedar, Red    | 7  | 278 | Oak, Bur        | 33 |     |                 |      |
| 75  | Boxelder      | 10 | 127 | Oak, Red      | 7  | 279 | Elm, Siberian   | 10 |     |                 |      |
| 76  | Boxelder      | 13 | 128 | Oak, Red      | 7  | 281 | Maple, Red      | 12 |     |                 |      |
| 77  | Boxelder      | 9  | 129 | Oak, Red      | 7  | 282 | Oak, Red        | 12 |     |                 |      |
| 78  | Elm, Siberian | 12 | 130 | Elm, American | 9  | 290 | Oak, Bur        | 10 |     |                 |      |
| 79  | Oak, Red      | 24 | 131 | Elm, American | 11 | 291 | Boxelder        | 8  |     |                 |      |
| 80  | Boxelder      | 21 | 132 | Boxelder      | 11 | 292 | Oak, Bur        | 12 |     |                 |      |
| 81  | Boxelder      | 15 | 133 | Boxelder      | 11 | 293 | Elm, Siberian   | 10 |     |                 |      |
| 82  | Boxelder      | 16 | 134 | Boxelder      | 10 | 294 | Hackberry       | 8  |     |                 |      |
| 83  | Elm, Siberian | 10 | 135 | Boxelder      | 13 | 295 | Oak, Bur        | 26 |     |                 |      |
| 84  | Elm, Siberian | 12 | 136 | Boxelder      | 8  | 296 | Aspen           | 8  |     |                 |      |
| 85  | Elm, Siberian | 11 | 137 | Boxelder      | 8  | 297 | Aspen           | 9  |     |                 |      |
| 86  | Elm, Siberian | 8  | 138 | Boxelder      | 8  | 298 | Aspen           | 14 |     |                 |      |
| 87  | Elm, Siberian | 8  | 139 | Boxelder      | 8  | 299 | Aspen           | 8  |     |                 |      |
| 88  | Elm, Siberian | 8  | 140 | Boxelder      | 8  | 300 | Ash, Green      | 9  |     |                 |      |
| 89  | Elm, Siberian | 9  | 141 | Boxelder      | 8  | 301 | Ash, Green      | 8  |     |                 |      |
| 90  | Elm, Siberian | 13 | 142 | Boxelder      | 8  | 302 | Oak, Bur        | 7  |     |                 |      |
| 91  | Elm, Siberian | 13 | 143 | Boxelder      | 8  | 303 | Ash, Green      | 9  |     |                 |      |
| 92  | Elm, Siberian | 13 | 144 | Boxelder      | 8  | 304 | Oak, Bur        | 36 |     |                 |      |
| 93  | Elm, Siberian | 10 | 145 | Boxelder      | 8  | 305 | Elm, American   | 8  |     |                 |      |
| 94  | Elm, Siberian | 18 | 146 | Boxelder      | 8  | 306 | Oak, Bur        | 30 |     |                 |      |
| 95  | Elm, Siberian | 11 | 147 | Boxelder      | 8  | 307 | Elm, American   | 9  |     |                 |      |
| 96  | Elm, Siberian | 8  | 148 | Boxelder      | 8  | 308 | Oak, Bur        | 35 |     |                 |      |
| 97  | Elm, Siberian | 8  | 149 | Boxelder      | 8  |     |                 |    |     |                 |      |
| 98  | Elm, Siberian | 9  | 150 | Boxelder      | 8  |     |                 |    |     |                 |      |
| 99  | Elm, Siberian | 9  | 151 | Boxelder      | 8  |     |                 |    |     |                 |      |
| 100 | Elm, Siberian | 15 | 152 | Boxelder      | 8  |     |                 |    |     |                 |      |
| 101 | Elm, Siberian | 9  | 153 | Boxelder      | 8  |     |                 |    |     |                 |      |

**TREES REMOVED HOUSEPADS (122)**

|    |               |    |     |               |    |     |               |      |
|----|---------------|----|-----|---------------|----|-----|---------------|------|
| 1  | Boxelder      | 12 | 42  | Oak, Red      | 5  | 162 | Cedar, Red    | 7    |
| 2  | Cherry, Black | 11 | 43  | Cedar, Red    | 8  | 163 | Oak, Bur      | 17   |
| 3  | Oak, Red      | 6  | 44  | Oak, Red      | 4  | 174 | Oak, Bur      | 27   |
| 4  | Oak, Red      | 16 | 45  | Oak, Bur      | 5  | 175 | Elm, American | 12   |
| 5  | Oak, Red      | 10 | 46  | Oak, Red      | 4  | 177 | Boxelder      | 10   |
| 6  | Oak, Red      | 4  | 47  | Oak, Red      | 6  | 178 | Boxelder      | 8    |
| 7  | Oak, Red      | 7  | 50  | Boxelder      | 17 | 179 | Boxelder      | 9    |
| 8  | Oak, Red      | 5  | 125 | Ash, Green    | 9  | 188 | Boxelder      | 8    |
| 9  | Oak, Red      | 10 | 126 | Oak, Bur      | 17 | 189 | Cedar, Red    | 4    |
| 10 | Oak, Red      | 7  | 127 | Boxelder      | 9  | 190 | Boxelder      | 11   |
| 11 | Oak, Red      | 12 | 128 | Hackberry     | 14 | 191 | Oak, Bur      | 23   |
| 12 | Oak, Red      | 11 | 129 | Cherry, Black | 10 | 192 | Oak, Bur      | 23   |
| 13 | Oak, Red      | 6  | 130 | Oak, Bur      | 16 | 193 | Oak, Bur      | 18   |
| 14 | Oak, Red      | 22 | 131 | Oak, Bur      | 12 | 197 | Oak, Bur      | 18   |
| 15 | Oak, Red      | 22 | 135 | Cherry, Black | 10 | 198 | Oak, Red      | 6    |
| 16 | Oak, Red      | 8  | 136 | Elm, American | 8  | 199 | Oak, Red      | 8    |
| 17 | Oak, Red      | 11 | 137 | Boxelder      | 13 | 200 | Boxelder      | 10   |
| 18 | Oak, Red      | 19 | 138 | Cherry, Black | 11 | 201 | Boxelder      | 10   |
| 19 | Oak, Red      | 17 | 139 | Boxelder      | 12 | 202 | Boxelder      | 9    |
| 20 | Oak, Red      | 14 | 140 | Boxelder      | 9  | 203 | Ash, Green    | 13   |
| 21 | Oak, Red      | 17 | 141 | Boxelder      | 9  | 204 | Oak, Bur      | 27   |
| 22 | Cedar, Red    | 6  | 142 | Cedar, Red    | 14 | 205 | Oak, Bur      | 20   |
| 23 | Oak, Red      | 14 | 143 | Boxelder      | 15 | 206 | Ash, Green    | 8    |
| 24 | Oak, Red      | 20 | 144 | Oak, Bur      | 19 | 207 | Elm, American | 15   |
| 25 | Oak, Bur      | 21 | 145 | Ash, Green    | 10 | 209 | Elm, American | 12   |
| 26 | Oak, Bur      | 10 | 146 | Boxelder      | 8  | 210 | Ash, Green    | 8    |
| 27 | Oak, Bur      | 12 | 147 | Boxelder      | 9  | 211 | Oak, Red      | 7    |
| 28 | Oak, Bur      | 16 | 148 | Boxelder      | 8  | 213 | Ash, Green    | 8    |
| 29 | Oak, Bur      | 28 | 149 | Oak, Red      | 30 | 254 | Elm, Siberian | 25   |
| 30 | Ash, Green    | 9  | 150 | Boxelder      | 13 | 260 | Elm, American | 9    |
| 31 | Oak, Bur      | 20 | 151 | Boxelder      | 8  | 261 | Boxelder      | 8    |
| 32 | Boxelder      | 13 | 152 | Boxelder      | 9  | 262 | Boxelder      | 10   |
| 33 | Boxelder      | 11 | 153 | Maple, Red    | 9  | 266 | Elm, Siberian | 19   |
| 34 | Oak, Bur      | 20 | 154 | Boxelder      | 8  | 283 | Cherry, Black | 8    |
| 35 | Oak, Bur      | 14 | 155 | Boxelder      | 8  | 284 | Boxelder      | 10   |
| 36 | Ash, Green    | 14 | 156 | Oak, Bur      | 21 | 285 | Boxelder      | 9    |
| 37 | Oak, Bur      | 15 | 157 | Cedar, Red    | 9  | 286 | Elm, American | 10   |
| 38 | Oak, Bur      | 18 | 158 | Ash, Green    | 9  | 287 | Boxelder      | 8    |
| 39 | Oak, Red      | 12 | 159 | Cedar, Red    | 13 | 288 | Boxelder      | 8    |
| 40 | Oak, Red      | 11 | 160 | Oak, Red      | 14 | 289 | Boxelder      | 9    |
| 41 | Oak, Red      | 17 | 161 | Boxelder      | 18 | 122 | Boxelder      | 1497 |

**TREES REMOVED ROADWAY**

|     |               |    |
|-----|---------------|----|
| 132 | Oak, Bur      | 16 |
| 133 | Boxelder      | 10 |
| 134 | Boxelder      | 9  |
| 135 | Boxelder      | 13 |
| 164 | Boxelder      | 8  |
| 165 | Boxelder      | 8  |
| 166 | Boxelder      | 8  |
| 167 | Boxelder      | 8  |
| 168 | Oak, Bur      | 21 |
| 169 | Oak, Bur      | 17 |
| 170 | Oak, Bur      | 11 |
| 171 | Ash, Green    | 9  |
| 172 | Elm, American | 9  |
| 173 | Cherry, Black | 8  |
| 176 | Boxelder      | 8  |
| 180 | Oak, Red      | 7  |
| 181 | Oak, Red      | 10 |
| 182 | Oak, Red      | 16 |
| 183 | Elm, American | 10 |
| 184 | Oak, Bur      | 16 |
| 185 | Oak, Bur      | 23 |
| 186 | Boxelder      | 9  |
| 187 | Boxelder      | 13 |
| 194 | Oak, Bur      | 15 |
| 195 | Oak, Bur      | 18 |
| 196 | Oak, Bur      | 20 |
| 280 | Oak, Red      | 12 |

26 324

**TREES REMOVED POND**

|     |               |     |
|-----|---------------|-----|
| 123 | Boxelder      | 8   |
| 124 | Oak, Bur      | 23  |
| 208 | Oak, Bur      | 30  |
| 212 | Aspen         | 14  |
| 214 | Oak, Red      | 10  |
| 220 | Oak, Bur      | 28  |
| 221 | Oak, Bur      | 20  |
| 222 | Boxelder      | 8   |
| 223 | Oak, Red      | 20  |
| 228 | Cherry, Black | 11  |
| 229 | Oak, Red      | 12  |
| 11  |               | 184 |

| DATE    | REVISIONS | CITY COMMENTS | BY | BR |
|---------|-----------|---------------|----|----|
| 5/31/17 |           | 5/26          |    |    |

**ROSHELL ENGINEERING, LLC**  
6192 267 TH CT WYOMING, MN 55092  
PHONE: 763.286.0521

**SILVER OAKS 2ND ADDITION**  
TREE PLAN  
RAMSEY, MINNESOTA

I HEREBY CERTIFY THAT THIS PLAN SPECIFICALLY REPORT WAS PREPARED BY ME OR UNDER MY LICENSED PROFESSIONAL ENGINEER UNDER THE LAWS OF THE STATE OF MINNESOTA.  
DATE 5/4/17 REG. NO. 24012  
Brent Rosshell  
Brent Rosshell

| DATE   | SCALE  | PROJECT | CHECKED | APPROVED |
|--------|--------|---------|---------|----------|
| 5/2/17 | 1"=50' | REG-17  | BTR     | BTR      |

**T1**

TREE INVENTORY PERFORMED BY MARK REHDER (S&S TREE)