

Need Planning
Commission Direction

REVISIONS	BY
XXXX	XX

SPECIAL NOTICE:
CROIX DESIGN AND DRAFTING, INC. ACCEPTS NO RESPONSIBILITY FOR ERRORS AND/OR OMISSIONS. THESE DRAWINGS ARE DESIGN CONCEPT ONLY. EVERY EFFORT HAS BEEN MADE DESIGNING TO THE LATEST CODES AND REGULATIONS. THE USER SHALL VERIFY ALL DIMENSIONS, MATERIALS, AND CONDITIONS WITH THE CONTRACTOR AND SUB-CONTRACTORS AND SUPPLIERS MUST CHECK ALL DETAILS AND DIMENSIONS AND BE RESPONSIBLE FOR ANY CHANGES OR ADJUSTMENTS REQUIRED DURING ACTUAL CONSTRUCTION. NO REPRESENTATION IS MADE OR IMPLIED FOR ACCURACY.

COPYRIGHT NOTICE, ALL RIGHTS RESERVED
THESE ARCHITECTURAL PLANS AND ALL RELATED WORKS ARE PROTECTED BY UNITED STATES COPYRIGHT LAWS, AND MAY NOT BE REPRODUCED OR TRANSMITTED IN ANY FORM OR BY ANY MEANS, WITH OR WITHOUT THE EXPRESS WRITTEN PERMISSION OF CROIX DESIGN AND DRAFTING, INC. CROIX DESIGN AND DRAFTING, INC.

LEVEL HEIGHT INFORMATION TABLE		
LEVEL	R.C.H.	TOP OF R.O.
BASEMENT	8'-1 1/8"	6'-10 1/2"
MAIN LEVEL	8'-1 1/8"	6'-10 1/2"

- SILVERLINE WINDOWS SPEC'D.
- MAINTENANCE FREE SOFFITS & FASCIA
- STONE VENEER WHERE SHOWN
- VINYL SIDING/CORNER TRIM (TYP.)
- BOARD & BATTEN SIDING WHERE SHOWN
- 4" WINDOW/DOOR TRIM WHERE SHOWN



FRONT ELEVATION 1/4" = 1'-0"
1315 SQFT. MAIN LEVEL

PROJECT SCHEDULE	
PROJECT IN	10/31/2016
PRELIM 1 SENT	11/04/2016
CHANGES IN	11/30/2016
PRELIM 2 SENT	12/06/2016

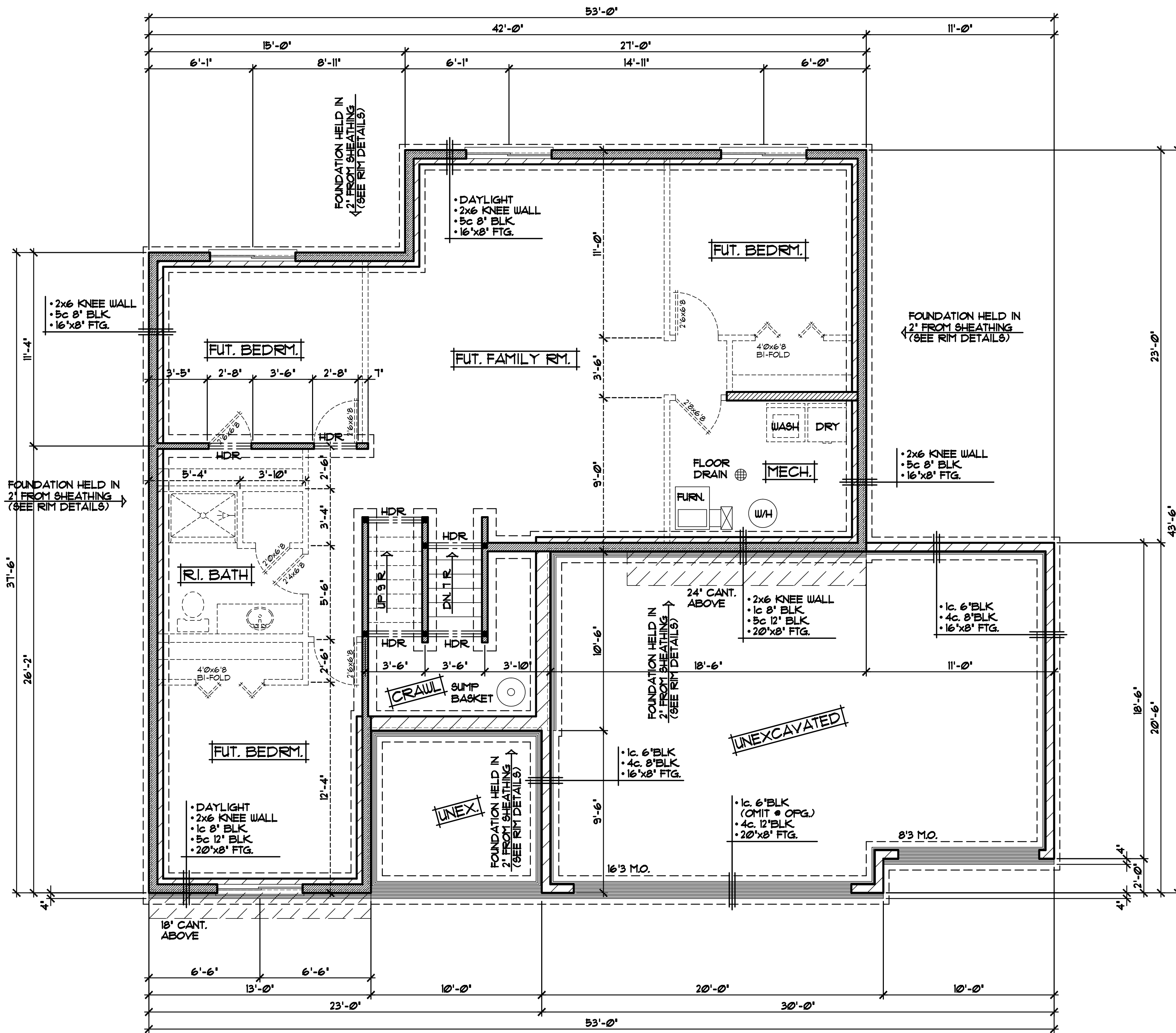
DESIGN and DRAFTING BY:

CROIX
DESIGN & DRAFTING, INC.

• ARCHITECTURAL DESIGN and DRAFTING SERVICE •
 • HOME PLAN SERVICE • CUSTOM HOMES • REMODELING •
 • PHONE: 763.757.5997 • ANDOVER, MINNESOTA •
 • WWW.CROIXDESIGN.COM •

BUILT BY:

DRAWN R.B.
CHECKED XX
DATE: 12/06/2016
SCALE: AS NOTED
CADD FILE # RPRE-108



ALL HEIGHT CALCULATIONS FOR FOUNDATIONS ARE BASED ON THE USE OF FULL 8" HIGH BLOCK WITH 3/8" JOINTS. IF MODULAR BLOCK IS USED, CONTRACTORS SHOULD ADJUST HEIGHTS ACCORDINGLY

FOUNDATION PLAN 1/4"=1'-0"
UNFINISHED

FRAMING & CONSTRUCTION NOTES

- 8'-1 1/8" PLATE HEIGHT • ENTIRE LOWER LEVEL (UNLESS NOTED OTHERWISE)
- PROVIDE 1/2" GYP. BD. • BASEMENT CEILING & ALLOW 80 SQFT. (MAX) OPEN CLG. AREA FOR MECHANICAL, FIRE BLOCK TRUSS SPACE • PERIMETER OF OPEN AREA

FOUNDATION CONST. NOTES

- SOLID CAP BLOCK • TOP COURSE & GROUT SOLID WHERE ANCHOR BOLTS ARE USED • BRICK LEDGES
- ALL EXTERIOR FOUNDATION DIMENSIONS ARE TO OUTSIDE OF EXTERIOR FOAM BOARD INSUL. OR SHEATHING. FOUNDATION TO BE HELD IN WHERE NOTED/SHOWN
- PROVIDE 2" R10 FOAM BOARD INSULATION • EXTERIOR FOUNDATION WALLS & 1" R5 FOAM BOARD INSULATION AT INTERIOR SIDE OF FOUNDATION WALLS (TYP.)
- INSULATION & AIR BARRIER TO BE CONT. OVER TOP OF FOUNDATION WALLS (TYP.)

DOOR & WINDOW NOTES

- SILVERLINE WINDOWS SPECIFIED, VERIFY ROUGH OPENING SIZES FOR DOORS & WINDOWS w/ MANUFACTURER
- WINDOWS WITH "*" REQUIRE A SASH STOPPER (TYP.)
- ALL WINDOW & DOOR OPENINGS TO HAVE (2)2x10 @ GRADE HEADER OR BETTER (UNLESS NOTED OTHERWISE)
- TOP OF R.O. FOR ALL WINDOWS ON LOWER LEVEL TO BE 6'-10 1/2" FROM FLOOR (UNLESS NOTED OTHERWISE)

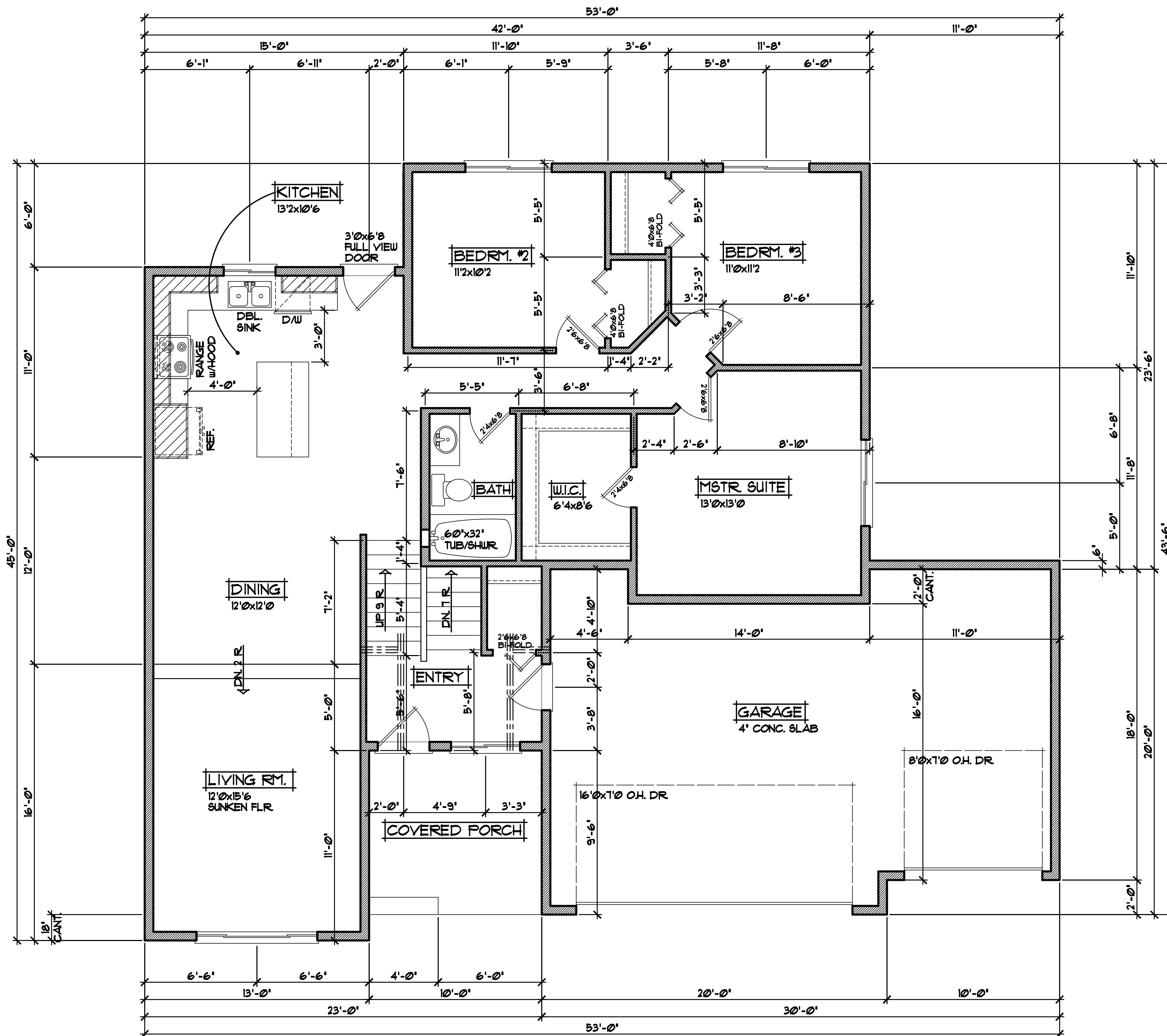
SPECIAL NOTICE:
CROIX DESIGN AND DRAFTING, INC. ACCEPTS NO RESPONSIBILITY FOR ERRORS AND/OR OMISSIONS. THESE DRAWINGS ARE DESIGN CONCEPT ONLY. EVERY EFFORT HAS BEEN MADE TO PREPARE ACCURATE DRAWINGS. HOWEVER, THE CONTRACTOR SHALL VERIFY ALL DIMENSIONS, CONDITIONS AND MATERIALS BEFORE CONSTRUCTION. ANY CHANGES OR ADJUSTMENTS REQUIRED DURING ACTUAL CONSTRUCTION, NO REPRESENTATION IS MADE OR IMPLIED FOR ACCURACY.

OFFICE: 763.757.5997
FAX: 763.757.4383
ANDOVER, MINNESOTA
WWW.CROIXDESIGN.COM



BUILT BY:

SHEET
X
of X
CADD FILE #
XXXXX



MAIN LEVEL PLAN 1/4"=1'-0"
1315 SQFT. MAIN LEVEL

FRAMING NOTES

- 8'-1 1/8" PLATE HEIGHT • ENTIRE MAIN LEVEL (UNLESS NOTED OTHERWISE)
- FRAME ALL GARAGE STUDS w/ 2x6 STUDS • 16' O.C. (TYP.)

DOOR & WINDOW NOTES

- SILVERLINE WINDOWS SPECIFIED, VERIFY ROUGH OPENING SIZES FOR DOORS & WINDOWS w/ MANUFACTURER
- WINDOWS with "*" REQUIRE A SASH STOPPER (TYP.)
- ALL WINDOW & DOOR OPENINGS TO HAVE (2)2x10 #2 GRADE HEADER or BETTER (UNLESS NOTED OTHERWISE)
- TOP OF R.O. FOR ALL WINDOWS ON MAIN LEVEL TO BE 6'-10 1/2" FROM SUB-FLOOR (UNLESS NOTED OTHERWISE)

SPECIAL NOTICE:

CROIX DESIGN AND DRAFTING, INC. ACCEPTS NO RESPONSIBILITY FOR ERRORS AND/OR OMISSIONS. THESE DRAWINGS ARE DESIGN CONCEPT ONLY. EVERY EFFORT HAS BEEN MADE TO PREVENT ERRORS AND OMISSIONS. THE USER OF THESE DRAWINGS SHALL BE RESPONSIBLE FOR VERIFYING ALL DIMENSIONS AND CONDITIONS BEFORE CONSTRUCTION. ANY CHANGES OR ADJUSTMENTS REQUIRED DURING CONSTRUCTION SHALL BE THE RESPONSIBILITY OF THE USER. NO REPRESENTATION IS MADE OR IMPLIED FOR ACCURACY.

OFFICE: 763.757.5997
FAX: 763.757.4383
ANDOVER, MINNESOTA
WWW.CROIXDESIGN.COM



BUILT BY:

SHEET
X
of X
CADD FILE #
XXXXX