

Items Selected:

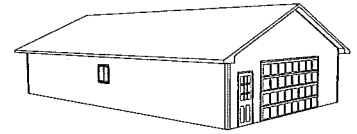
Gable roof w/ 5/12 pitch, Energy Trusses 2' O.C.
Truss Design Location Zip Code: 55303
2x6 Wall Framing Material
30' Wide X 50' Deep X 9' High
Siding Panel Size - 20' X 8"
Prairie Wheat Pro Lap Residential Steel Siding
Prairie Wheat Pro Lap Residential Steel Trim
7/16" OSB Wall Sheathing
12" gable/24" eave overhangs
1/2" OSB Roof Sheathing
Castlebrook, Desert Shake Shingles
4' Shingleover Ridge Vent
Hunter Green Aluminum Soffit & Fascia
Hunter Green Premium Roof Edge
Pine Overhead Door Jamb

Options Selected:

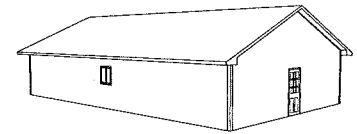
The options you have selected are:
15 LB Roof Felt
1 - 16x8 Overhead Door - Premium RP MDP38 EZ Set
2 - 36x80 Service Door - C4 9 Lite 2-Panel LS

FRANCIS
KAAS
30' X 50'
9' WALLS

Front View



Back View



Estimated price: \$14,945.00*

*Today's estimated price, future pricing may go up or down.
*Tax, labor, and delivery not included.

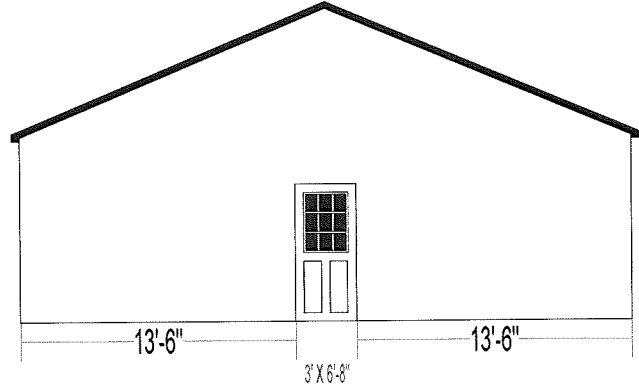
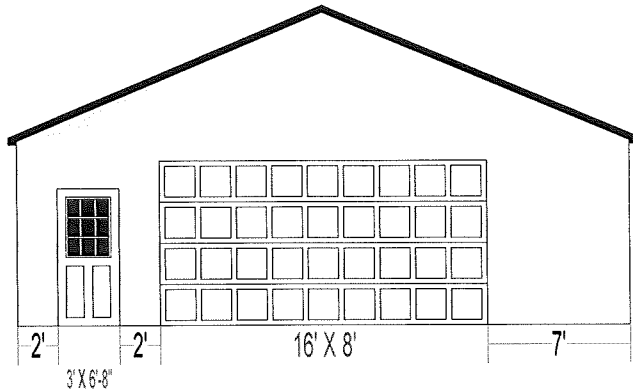


*** Take this sheet to the Building Materials counter to purchase your materials. ***

Floor type (concrete, dirt, gravel) is NOT included in estimated price. The floor type is used in the calculation of materials needed. Labor, foundation, steel beams, paint, electrical, heating, plumbing, and delivery are also NOT included in estimated price. This is an estimate. It is only for general price information. This is not an offer and there can be no legally binding contract between the parties based on this estimate. The prices stated herein are subject to change depending upon the market conditions. The prices stated on this estimate are not firm for any time period unless specifically written otherwise on this form. The availability of materials is subject to inventory conditions. MENARDS IS NOT RESPONSIBLE FOR ANY LOSS INCURRED BY THE GUEST WHO RELIES ON PRICES SET FORTH HEREIN OR ON THE AVAILABILITY OF ANY MATERIALS STATED HEREIN. All information on this form, other than price, has been provided by the guest and Menards is not responsible for any errors in the information on this estimate, including but not limited to quantity, dimension and quality. Please examine this estimate carefully. MENARDS MAKES NO REPRESENTATIONS, ORAL, WRITTEN OR OTHERWISE THAT THE MATERIALS LISTED ARE SUITABLE FOR ANY PURPOSE BEING CONSIDERED BY THE GUE: BECAUSE OF THE WIDE VARIATIONS IN CODES, THERE ARE NO REPRESENTATIONS THAT THE MATERIALS LISTED HEREIN MEET YOUR CODE REQUIREMENTS. THE PLANS AND/OR DESIGNS PROVIDED ARE NOT ENGINEERED. LOCAL CODE OR ZONING REGULATIONS MAY REQUIRE SUCH STRUCTURES TO BE PROFESSIONALLY ENGINEERED AND CERTIFIED PRIOR TO CONSTRUCTION.

*** Here are the wall configurations for your design.

Illustration May Not Depict All Options Selected

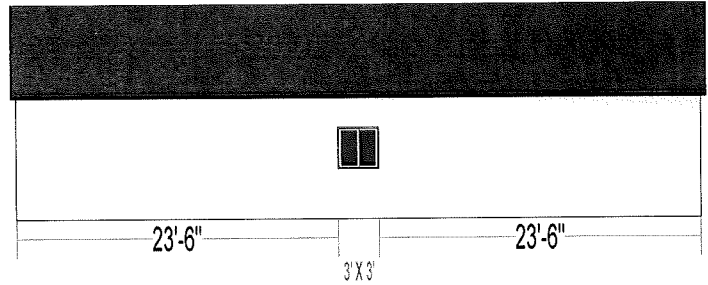
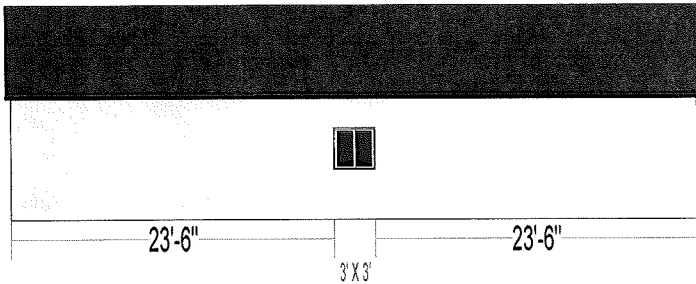


Gable Front View

- (1) - MIDWEST STEEL C-4 9-LITE TRAD 2-PNL PH 36X80 LH SB
- (1) - GARAGE DOOR WHITE PREM R/P MDP38 16X8 EZSET TORS

Gable Back View

- (1) - MIDWEST STEEL C-4 9-LITE TRAD 2-PNL PH 36X80 LH SB



Eave Front View

- (1) - WINDOW 36X36 SLIDER UTILITY WINDOW 36X36

Eave Back View

- (1) - WINDOW 36X36 SLIDER UTILITY WINDOW 36X36

Building Size: 30 feet wide X 50 feet long X 9 feet high
Approximate Peak Height: 15 feet 11 inches (191 inches)

NOTE: Overhead doors may need to be "Wind Code Rated" depending on your building location.
Confirm the door requirements with your local zoning official before construction.

Menards-provided material estimates are intended as a general construction aid and have been calculated using typical construction methods. Because of the wide variability in codes and site restrictions, all final plans and material lists must be verified with your local zoning office. Menards is a supplier of construction materials and does not assume liability for design, engineering or the completeness of any material lists provided. Underground electrical, phone and gas lines should be located and marked before your building plans are finalized. Remember to use safety equipment including dust masks and sight and hearing protection during construction to ensure a positive building experience.

