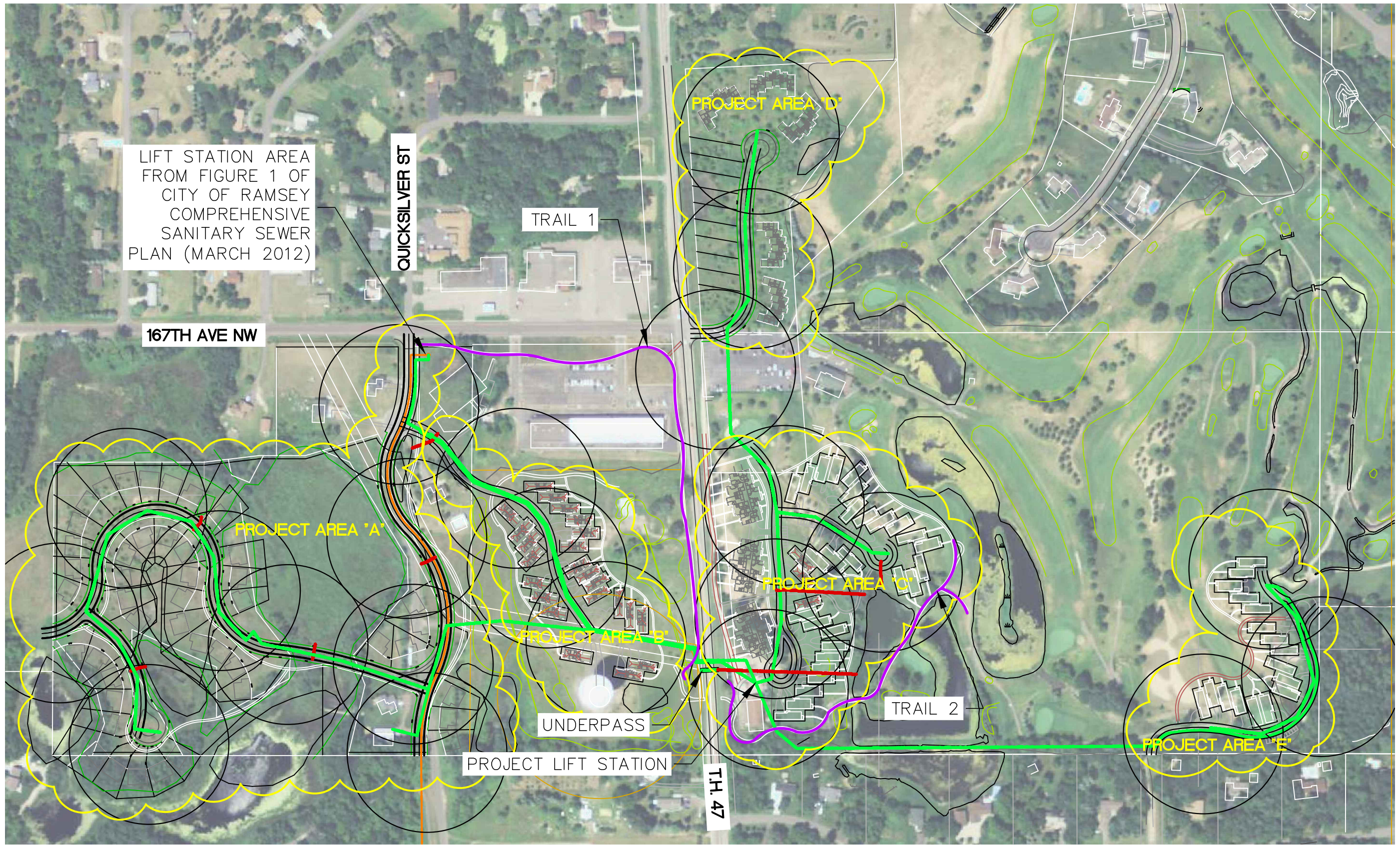


P:\PT\RUMRI\134982-15-final-dsgn\51-drawings\10-Civil\cad\Exhibits\Utility_Layout.dwg 4/13/2016 9:47 AM rhoehn



LIFT STATION AREA FROM FIGURE 1 OF CITY OF RAMSEY COMPREHENSIVE SANITARY SEWER PLAN (MARCH 2012)

QUICKSILVER ST

TRAIL 1

PROJECT AREA 'D'

167TH AVE NW

PROJECT AREA 'A'

PROJECT AREA 'B'

PROJECT AREA 'C'

UNDERPASS

TRAIL 2

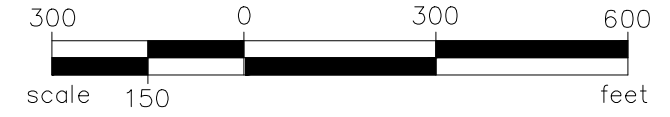
PROJECT LIFT STATION

T.H. 47

PROJECT AREA 'E'



- FORCEMAIN FROM CITY OF RAMSEY COMPREHENSIVE SANITARY SEWER STUDY DATED MARCH 2012 (FIG 1)
- DEVELOPMENT SANITARY SEWER
- DEVELOPMENT STORM SEWER



	PHONE: 320.229.4300 1200 25TH AVENUE SOUTH P.O. BOX 1717 ST. CLOUD, MN 56302-1717 www.sehinc.com	FILE NO. RUMRI 134982	UTILITY LAYOUT RUM RIVER HILLS GOLF COMMUNITY RAMSEY, MINNESOTA	EXHIBIT NO. 2
		DATE: 04/13/2016		