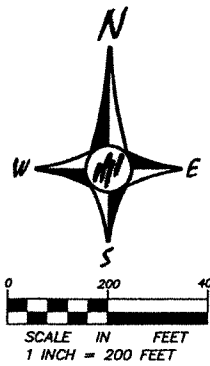


1/27/17

**PROPOSED DESCRIPTION FOR THE VACATION OF
THE DRAINAGE AND UTILITY EASEMENTS
FOR BROOKFIELD EIGHTH ADDITION**

All of the drainage and utility easements as dedicated on the recorded plats of BROOKFIELD FIRST ADDITION AND BROOKFIELD SECOND ADDITION, which lie within Outlot A, BROOKFIELD SECOND ADDITION, Anoka County, Minnesota.

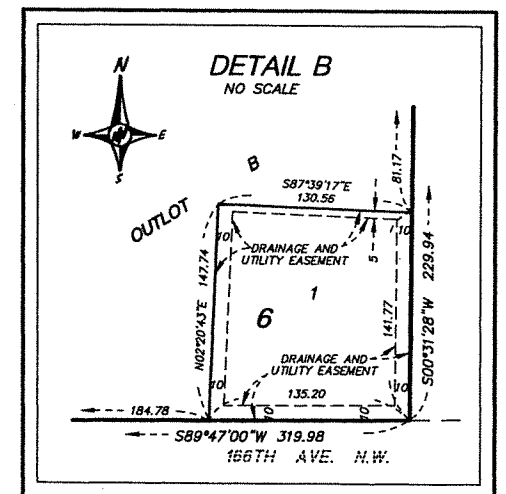
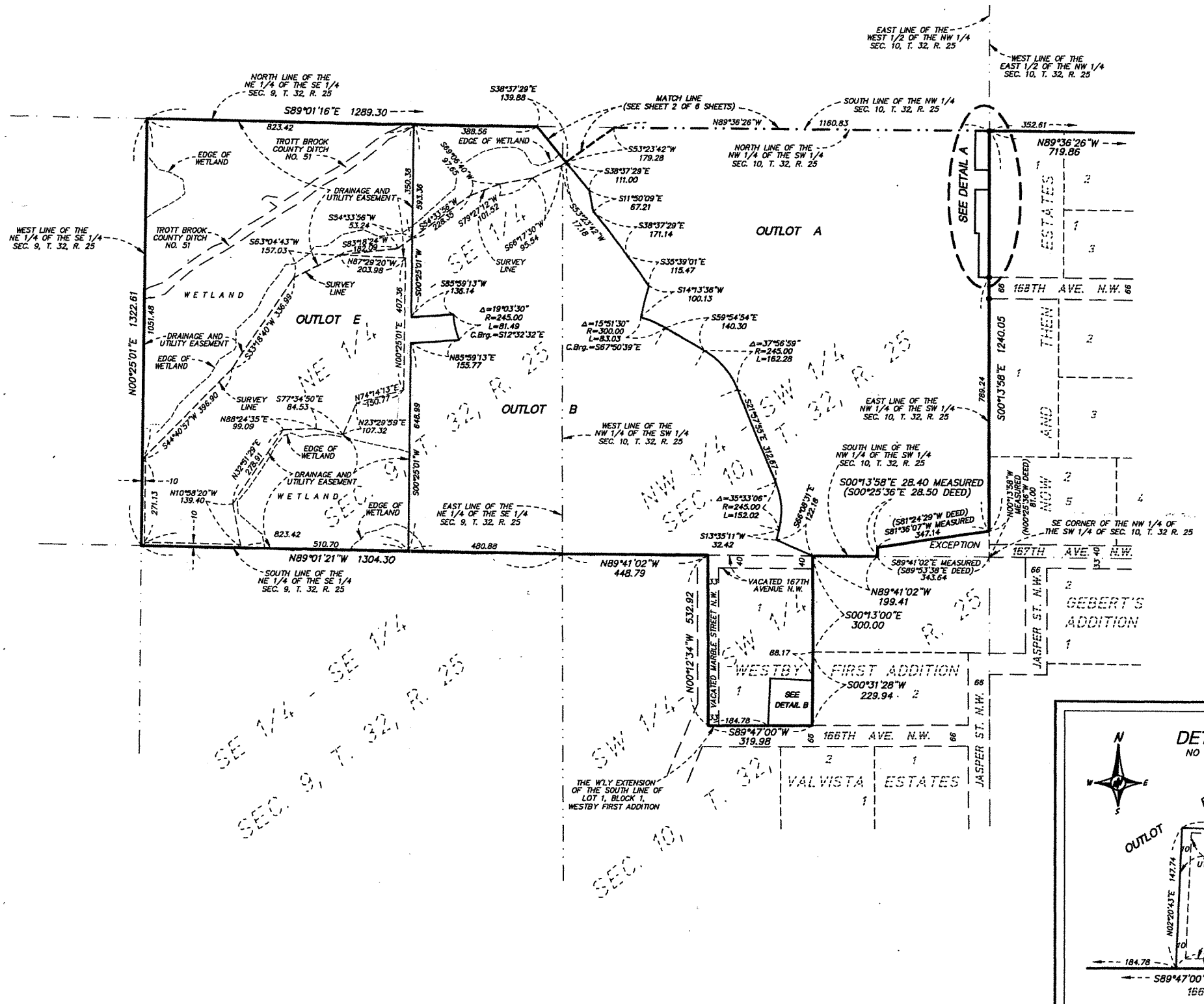
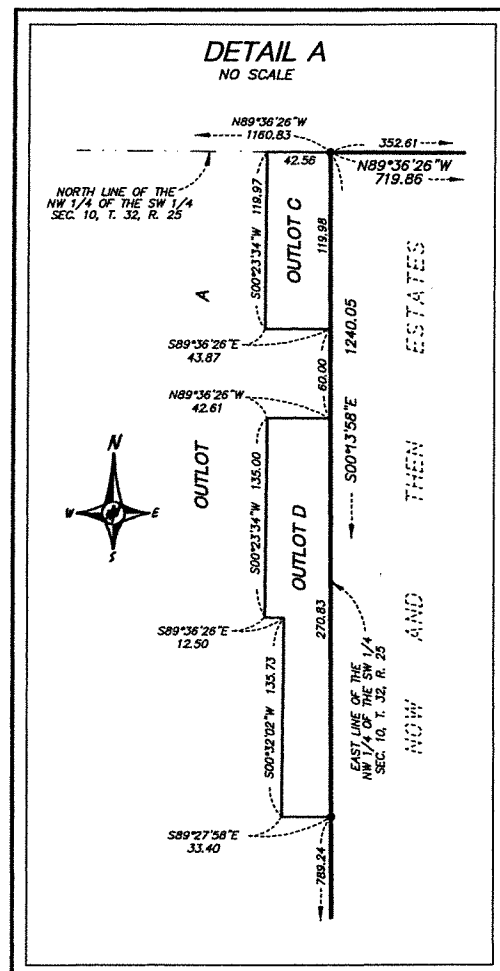
BROOKFIELD FIRST ADDITION



FOR THE PURPOSES OF THIS PLAT, THE NORTH LINE OF THE NORTHEAST QUARTER OF THE SOUTHEAST QUARTER OF SECTION 9, TOWNSHIP 32, RANGE 25 IS ASSUMED TO HAVE A BEARING OF SOUTH 89 DEGREES 01 MINUTES 16 SECONDS EAST.

• DENOTES IRON PIPE MONUMENT FOUND

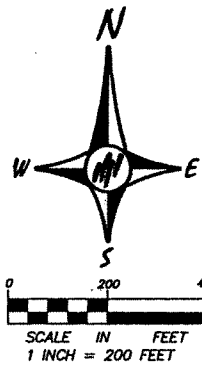
ALL MONUMENTS REQUIRED BY MINNESOTA STATUTE AND NOT SHOWN ON THIS PLAT, WILL BE SET WITHIN ONE YEAR OF THE RECORDING DATE OF THIS PLAT AND SHALL BE EVIDENCED BY A 1/2 INCH BY 14 INCH IRON PIPE MARKED BY R.L.S. No. 25287



PASSE ENGINEERING, INC.
REGISTERED PROFESSIONAL ENGINEERS
LICENSED LAND SURVEYORS

BROOKFIELD SECOND ADDITION

CITY OF RAMSEY
COUNTY OF ANOKA
SEC'S 9 & 10, T. 32, R. 25
Book 74 Page 20

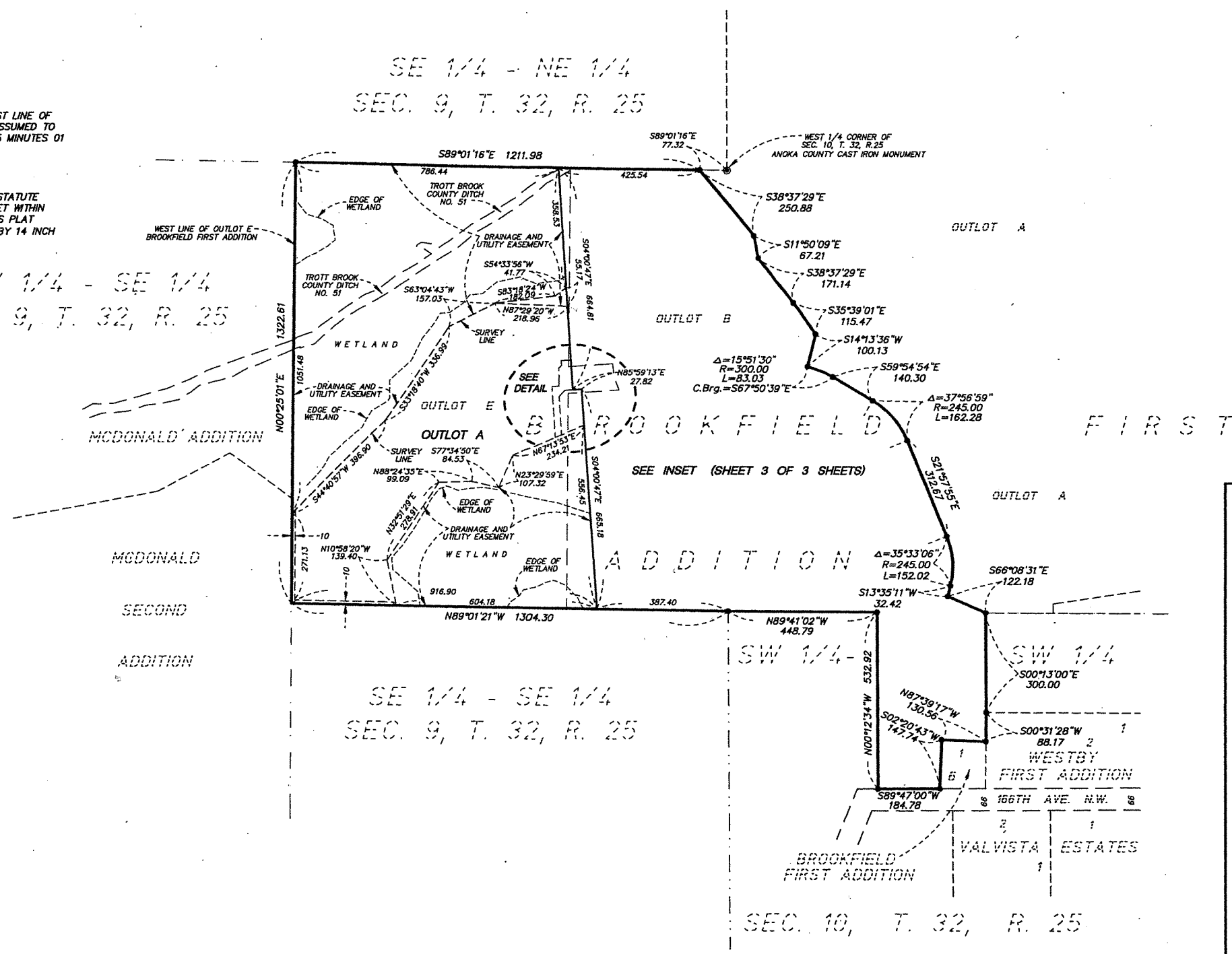


FOR THE PURPOSES OF THIS PLAT, THE WEST LINE OF OUTLOT E, BROOKFIELD FIRST ADDITION IS ASSUMED TO HAVE A BEARING OF NORTH 00 DEGREES 25 MINUTES 01 SECONDS EAST.

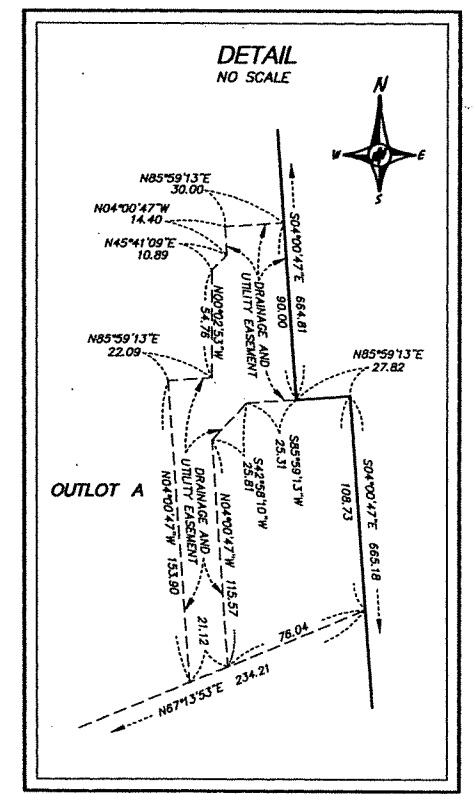
• DENOTES IRON PIPE MONUMENT FOUND

ALL MONUMENTS REQUIRED BY MINNESOTA STATUTE AND NOT SHOWN ON THIS PLAT, WILL BE SET WITHIN ONE YEAR OF THE RECORDING DATE OF THIS PLAT AND SHALL BE EVIDENCED BY A 1/2 INCH BY 14 INCH IRON PIPE MARKED BY R.L.S. No. 25287

NW 1/4 - SE 1/4
SEC. 9, T. 32, R. 25



SEE INSET (SHEET 3 OF 3 SHEETS)



PASSE ENGINEERING, INC.
REGISTERED PROFESSIONAL ENGINEERS
LICENSED LAND SURVEYORS